

# Synergy Resources

Well Name: **SRC Wiedeman 11-5-3NCHZ**

Surface Location: SRC Wiedeman Pad Sec.5-T5N-R66W  
North American Datum 1983 , US State Plane 1983 , Colorado Northern Zone

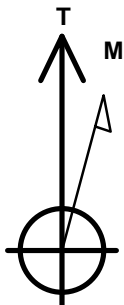
Ground Elevation: 4783.0

+N/-S	+E/-W	Northing	Easting	Latitude	Longitude	Slot
0.0	0.0	1401462.33	3194382.02	40.433315	-104.801715	

RKB - 13' WELL @ 4796.0ft (RKB - 13')

## WELLBORE TARGET DETAILS

Name	TVD	+N/-S	+E/-W	Shape
SHL 1408'FNL & 2438'FEL, Sec.5		0.0	0.0	Point
BHL 1091'FNL & 2149'FWL, Sec.3	7053.0	388.2	9958.5	Point



Azimuths to True North  
Magnetic North: 8.45°

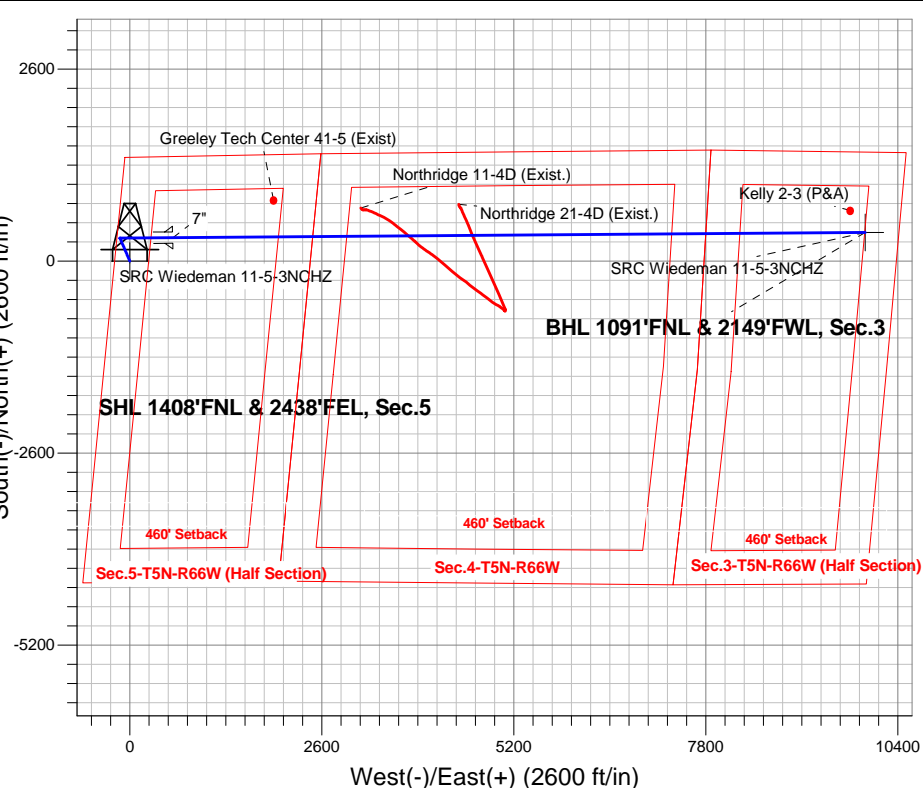
Magnetic Field  
Strength: 52800.0snT  
Dip Angle: 66.96°  
Date: 9/24/2014  
Model: IGRF2010

SRC Wiedeman Pad Sec.5-T5N-R66W  
SRC Wiedeman 11-5-3NCHZ  
Plan #3 (9-24-14)  
8:03, September 25 2014

## ANNOTATIONS

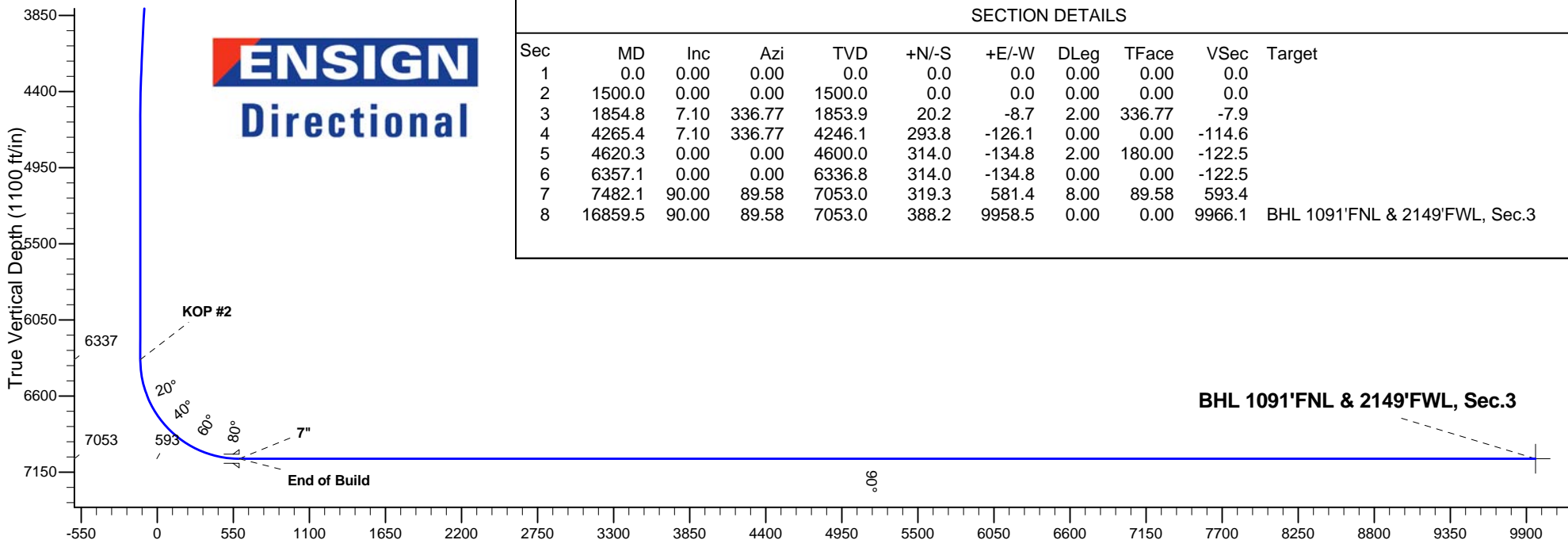
TVD	MD	Annotation
1500.0	1500.0	KOP #1
6336.8	6357.1	KOP #2
7053.0	7482.1	End of Build

South(-)/North(+) (2600 ft/in)



West(-)/East(+) (2600 ft/in)

**ENSIGN**  
Directional



## SECTION DETAILS

Sec	MD	Inc	Azi	TVD	+N/-S	+E/-W	DLeg	TFace	VSec	Target
1	0.0	0.00	0.00	0.0	0.0	0.0	0.00	0.00	0.0	
2	1500.0	0.00	0.00	1500.0	0.0	0.0	0.00	0.00	0.0	
3	1854.8	7.10	336.77	1853.9	20.2	-8.7	2.00	336.77	-7.9	
4	4265.4	7.10	336.77	4246.1	293.8	-126.1	0.00	0.00	-114.6	
5	4620.3	0.00	0.00	4600.0	314.0	-134.8	2.00	180.00	-122.5	
6	6357.1	0.00	0.00	6336.8	314.0	-134.8	0.00	0.00	-122.5	
7	7482.1	90.00	89.58	7053.0	319.3	581.4	8.00	89.58	593.4	
8	16859.5	90.00	89.58	7053.0	388.2	9958.5	0.00	0.00	9966.1	BHL 1091'FNL & 2149'FWL, Sec.3

**BHL 1091'FNL & 2149'FWL, Sec.3**

Vertical Section at 87.77° (1100 ft/in)



## **Synergy Resources**

**Sec.5-T5N-R66W**

**SRC Wiedeman Pad Sec.5-T5N-R66W**

**SRC Wiedeman 11-5-3NCHZ**

**Wellbore #1**

**Plan: Plan #3 (9-24-14)**

## **Standard Planning Report**

**25 September, 2014**

<b>Database:</b>	Landmark	<b>Local Co-ordinate Reference:</b>	Well SRC Wiedeman 11-5-3NCHZ
<b>Company:</b>	Synergy Resources	<b>TVD Reference:</b>	WELL @ 4796.0ft (RKB - 13')
<b>Project:</b>	Sec.5-T5N-R66W	<b>MD Reference:</b>	WELL @ 4796.0ft (RKB - 13')
<b>Site:</b>	SRC Wiedeman Pad Sec.5-T5N-R66W	<b>North Reference:</b>	True
<b>Well:</b>	SRC Wiedeman 11-5-3NCHZ	<b>Survey Calculation Method:</b>	Minimum Curvature
<b>Wellbore:</b>	Wellbore #1		
<b>Design:</b>	Plan #3 (9-24-14)		

<b>Project</b>	Sec.5-T5N-R66W		
<b>Map System:</b>	US State Plane 1983	<b>System Datum:</b>	Mean Sea Level
<b>Geo Datum:</b>	North American Datum 1983		Using Well Reference Point
<b>Map Zone:</b>	Colorado Northern Zone		Using geodetic scale factor

Site	SRC Wiedeman Pad Sec.5-T5N-R66W				
Site Position:		Northing:	1,401,391.96ft	Latitude:	40.433123
From:	Lat/Long	Easting:	3,194,327.74ft	Longitude:	-104.801912
Position Uncertainty:	0.0 ft	Slot Radius:	"	Grid Convergence:	0.45 °

Well	SRC Wiedeman 11-5-3NCHZ					
Well Position	+N-S	69.9 ft	Northing:	1,401,462.33 ft	Latitude:	40.433315
	+E-W	54.8 ft	Easting:	3,194,382.02 ft	Longitude:	-104.801715
Position Uncertainty		0.0 ft	Wellhead Elevation:	ft	Ground Level:	4,783.0 ft

<b>Wellbore</b>	Wellbore #1				
<b>Magnetics</b>	<b>Model Name</b>	<b>Sample Date</b>	<b>Declination (°)</b>	<b>Dip Angle (°)</b>	<b>Field Strength (nT)</b>
	IGRF2010	9/24/2014	8.45	66.96	52,800

<b>Design</b>	Plan #3 (9-24-14)			
<b>Audit Notes:</b>				
<b>Version:</b>	<b>Phase:</b>	PROTOTYPE	<b>Tie On Depth:</b>	0.0
<b>Vertical Section:</b>	<b>Depth From (TVD) (ft)</b>	<b>+N/-S (ft)</b>	<b>+E/-W (ft)</b>	<b>Direction (°)</b>
	0.0	0.0	0.0	87.77

<b>Plan Sections</b>										
Measured Depth (ft)	Inclination (°)	Azimuth (°)	Vertical Depth (ft)	+N/-S (ft)	+E/-W (ft)	Dogleg Rate (°/100ft)	Build Rate (°/100ft)	Turn Rate (°/100ft)	TFO (°)	Target
0.0	0.00	0.00	0.0	0.0	0.0	0.00	0.00	0.00	0.00	
1,500.0	0.00	0.00	1,500.0	0.0	0.0	0.00	0.00	0.00	0.00	
1,854.8	7.10	336.77	1,853.9	20.2	-8.7	2.00	2.00	0.00	336.77	
4,265.4	7.10	336.77	4,246.1	293.8	-126.1	0.00	0.00	0.00	0.00	
4,620.3	0.00	0.00	4,600.0	314.0	-134.8	2.00	-2.00	0.00	180.00	
6,357.1	0.00	0.00	6,336.8	314.0	-134.8	0.00	0.00	0.00	0.00	
7,482.1	90.00	89.58	7,053.0	319.3	581.4	8.00	8.00	0.00	89.58	
16,859.5	90.00	89.58	7,053.0	388.2	9,958.5	0.00	0.00	0.00	0.00	BHL 1091'FNL & 21

<b>Database:</b>	Landmark	<b>Local Co-ordinate Reference:</b>	Well SRC Wiedeman 11-5-3NCHZ
<b>Company:</b>	Synergy Resources	<b>TVD Reference:</b>	WELL @ 4796.0ft (RKB - 13')
<b>Project:</b>	Sec.5-T5N-R66W	<b>MD Reference:</b>	WELL @ 4796.0ft (RKB - 13')
<b>Site:</b>	SRC Wiedeman Pad Sec.5-T5N-R66W	<b>North Reference:</b>	True
<b>Well:</b>	SRC Wiedeman 11-5-3NCHZ	<b>Survey Calculation Method:</b>	Minimum Curvature
<b>Wellbore:</b>	Wellbore #1		
<b>Design:</b>	Plan #3 (9-24-14)		

Planned Survey									
Measured Depth (ft)	Inclination (°)	Azimuth (°)	Vertical Depth (ft)	+N/-S (ft)	+E/-W (ft)	Vertical Section (ft)	Dogleg Rate (°/100ft)	Build Rate (°/100ft)	Turn Rate (°/100ft)
0.0	0.00	0.00	0.0	0.0	0.0	0.0	0.00	0.00	0.00
1.0	0.00	0.00	1.0	0.0	0.0	0.0	0.00	0.00	0.00
<b>SHL 1408'FNL &amp; 2438'FEL, Sec.5</b>									
100.0	0.00	0.00	100.0	0.0	0.0	0.0	0.00	0.00	0.00
200.0	0.00	0.00	200.0	0.0	0.0	0.0	0.00	0.00	0.00
300.0	0.00	0.00	300.0	0.0	0.0	0.0	0.00	0.00	0.00
400.0	0.00	0.00	400.0	0.0	0.0	0.0	0.00	0.00	0.00
500.0	0.00	0.00	500.0	0.0	0.0	0.0	0.00	0.00	0.00
600.0	0.00	0.00	600.0	0.0	0.0	0.0	0.00	0.00	0.00
700.0	0.00	0.00	700.0	0.0	0.0	0.0	0.00	0.00	0.00
800.0	0.00	0.00	800.0	0.0	0.0	0.0	0.00	0.00	0.00
900.0	0.00	0.00	900.0	0.0	0.0	0.0	0.00	0.00	0.00
1,000.0	0.00	0.00	1,000.0	0.0	0.0	0.0	0.00	0.00	0.00
1,100.0	0.00	0.00	1,100.0	0.0	0.0	0.0	0.00	0.00	0.00
1,200.0	0.00	0.00	1,200.0	0.0	0.0	0.0	0.00	0.00	0.00
1,300.0	0.00	0.00	1,300.0	0.0	0.0	0.0	0.00	0.00	0.00
1,400.0	0.00	0.00	1,400.0	0.0	0.0	0.0	0.00	0.00	0.00
1,500.0	0.00	0.00	1,500.0	0.0	0.0	0.0	0.00	0.00	0.00
<b>KOP #1</b>									
1,600.0	2.00	336.77	1,600.0	1.6	-0.7	-0.6	2.00	2.00	0.00
1,700.0	4.00	336.77	1,699.8	6.4	-2.8	-2.5	2.00	2.00	0.00
1,800.0	6.00	336.77	1,799.5	14.4	-6.2	-5.6	2.00	2.00	0.00
1,854.8	7.10	336.77	1,853.9	20.2	-8.7	-7.9	2.00	2.00	0.00
1,900.0	7.10	336.77	1,898.7	25.3	-10.9	-9.9	0.00	0.00	0.00
2,000.0	7.10	336.77	1,998.0	36.6	-15.7	-14.3	0.00	0.00	0.00
2,100.0	7.10	336.77	2,097.2	48.0	-20.6	-18.7	0.00	0.00	0.00
2,200.0	7.10	336.77	2,196.4	59.4	-25.5	-23.1	0.00	0.00	0.00
2,300.0	7.10	336.77	2,295.7	70.7	-30.4	-27.6	0.00	0.00	0.00
2,400.0	7.10	336.77	2,394.9	82.1	-35.2	-32.0	0.00	0.00	0.00
2,500.0	7.10	336.77	2,494.2	93.4	-40.1	-36.4	0.00	0.00	0.00
2,600.0	7.10	336.77	2,593.4	104.8	-45.0	-40.9	0.00	0.00	0.00
2,700.0	7.10	336.77	2,692.6	116.1	-49.8	-45.3	0.00	0.00	0.00
2,800.0	7.10	336.77	2,791.9	127.5	-54.7	-49.7	0.00	0.00	0.00
2,900.0	7.10	336.77	2,891.1	138.8	-59.6	-54.1	0.00	0.00	0.00
3,000.0	7.10	336.77	2,990.3	150.2	-64.5	-58.6	0.00	0.00	0.00
3,100.0	7.10	336.77	3,089.6	161.5	-69.3	-63.0	0.00	0.00	0.00
3,200.0	7.10	336.77	3,188.8	172.9	-74.2	-67.4	0.00	0.00	0.00
3,300.0	7.10	336.77	3,288.0	184.2	-79.1	-71.9	0.00	0.00	0.00
3,400.0	7.10	336.77	3,387.3	195.6	-84.0	-76.3	0.00	0.00	0.00
3,500.0	7.10	336.77	3,486.5	206.9	-88.8	-80.7	0.00	0.00	0.00
3,600.0	7.10	336.77	3,585.7	218.3	-93.7	-85.1	0.00	0.00	0.00
3,700.0	7.10	336.77	3,685.0	229.6	-98.6	-89.6	0.00	0.00	0.00
3,800.0	7.10	336.77	3,784.2	241.0	-103.5	-94.0	0.00	0.00	0.00
3,900.0	7.10	336.77	3,883.4	252.3	-108.3	-98.4	0.00	0.00	0.00
4,000.0	7.10	336.77	3,982.7	263.7	-113.2	-102.8	0.00	0.00	0.00
4,100.0	7.10	336.77	4,081.9	275.1	-118.1	-107.3	0.00	0.00	0.00
4,200.0	7.10	336.77	4,181.1	286.4	-123.0	-111.7	0.00	0.00	0.00
4,265.4	7.10	336.77	4,246.1	293.8	-126.1	-114.6	0.00	0.00	0.00
4,300.0	6.41	336.77	4,280.4	297.6	-127.7	-116.1	2.00	-2.00	0.00
4,400.0	4.41	336.77	4,379.9	306.2	-131.5	-119.4	2.00	-2.00	0.00
4,500.0	2.41	336.77	4,479.8	311.7	-133.8	-121.6	2.00	-2.00	0.00
4,600.0	0.41	336.77	4,579.7	313.9	-134.8	-122.4	2.00	-2.00	0.00
4,620.3	0.00	0.00	4,600.0	314.0	-134.8	-122.5	2.00	-2.00	0.00
4,700.0	0.00	0.00	4,679.7	314.0	-134.8	-122.5	0.00	0.00	0.00

<b>Database:</b>	Landmark	<b>Local Co-ordinate Reference:</b>	Well SRC Wiedeman 11-5-3NCHZ
<b>Company:</b>	Synergy Resources	<b>TVD Reference:</b>	WELL @ 4796.0ft (RKB - 13')
<b>Project:</b>	Sec.5-T5N-R66W	<b>MD Reference:</b>	WELL @ 4796.0ft (RKB - 13')
<b>Site:</b>	SRC Wiedeman Pad Sec.5-T5N-R66W	<b>North Reference:</b>	True
<b>Well:</b>	SRC Wiedeman 11-5-3NCHZ	<b>Survey Calculation Method:</b>	Minimum Curvature
<b>Wellbore:</b>	Wellbore #1		
<b>Design:</b>	Plan #3 (9-24-14)		

Planned Survey									
Measured Depth (ft)	Inclination (°)	Azimuth (°)	Vertical Depth (ft)	+N/-S (ft)	+E/-W (ft)	Vertical Section (ft)	Dogleg Rate (°/100ft)	Build Rate (°/100ft)	Turn Rate (°/100ft)
4,800.0	0.00	0.00	4,779.7	314.0	-134.8	-122.5	0.00	0.00	0.00
4,900.0	0.00	0.00	4,879.7	314.0	-134.8	-122.5	0.00	0.00	0.00
5,000.0	0.00	0.00	4,979.7	314.0	-134.8	-122.5	0.00	0.00	0.00
5,100.0	0.00	0.00	5,079.7	314.0	-134.8	-122.5	0.00	0.00	0.00
5,200.0	0.00	0.00	5,179.7	314.0	-134.8	-122.5	0.00	0.00	0.00
5,300.0	0.00	0.00	5,279.7	314.0	-134.8	-122.5	0.00	0.00	0.00
5,400.0	0.00	0.00	5,379.7	314.0	-134.8	-122.5	0.00	0.00	0.00
5,500.0	0.00	0.00	5,479.7	314.0	-134.8	-122.5	0.00	0.00	0.00
5,600.0	0.00	0.00	5,579.7	314.0	-134.8	-122.5	0.00	0.00	0.00
5,700.0	0.00	0.00	5,679.7	314.0	-134.8	-122.5	0.00	0.00	0.00
5,800.0	0.00	0.00	5,779.7	314.0	-134.8	-122.5	0.00	0.00	0.00
5,900.0	0.00	0.00	5,879.7	314.0	-134.8	-122.5	0.00	0.00	0.00
6,000.0	0.00	0.00	5,979.7	314.0	-134.8	-122.5	0.00	0.00	0.00
6,100.0	0.00	0.00	6,079.7	314.0	-134.8	-122.5	0.00	0.00	0.00
6,200.0	0.00	0.00	6,179.7	314.0	-134.8	-122.5	0.00	0.00	0.00
6,300.0	0.00	0.00	6,279.7	314.0	-134.8	-122.5	0.00	0.00	0.00
6,357.1	0.00	0.00	6,336.8	314.0	-134.8	-122.5	0.00	0.00	0.00
<b>KOP #2</b>									
6,400.0	3.43	89.58	6,379.7	314.0	-133.5	-121.2	8.00	8.00	0.00
6,500.0	11.43	89.58	6,478.8	314.1	-120.6	-108.3	8.00	8.00	0.00
6,600.0	19.43	89.58	6,575.1	314.3	-94.0	-81.7	8.00	8.00	0.00
6,700.0	27.43	89.58	6,666.8	314.6	-54.3	-42.0	8.00	8.00	0.00
6,800.0	35.43	89.58	6,752.0	315.0	-2.2	10.1	8.00	8.00	0.00
6,900.0	43.43	89.58	6,829.2	315.4	61.3	73.5	8.00	8.00	0.00
7,000.0	51.43	89.58	6,896.8	316.0	134.9	147.1	8.00	8.00	0.00
7,100.0	59.43	89.58	6,953.5	316.6	217.2	229.3	8.00	8.00	0.00
7,200.0	67.43	89.58	6,998.2	317.2	306.5	318.7	8.00	8.00	0.00
7,300.0	75.43	89.58	7,030.0	317.9	401.3	413.3	8.00	8.00	0.00
7,400.0	83.43	89.58	7,048.3	318.7	499.5	511.5	8.00	8.00	0.00
7,482.1	90.00	89.58	7,053.0	319.3	581.4	593.4	8.00	8.00	0.00
<b>End of Build - 7"</b>									
7,500.0	90.00	89.58	7,053.0	319.4	599.3	611.3	0.00	0.00	0.00
7,600.0	90.00	89.58	7,053.0	320.1	699.3	711.2	0.00	0.00	0.00
7,700.0	90.00	89.58	7,053.0	320.9	799.3	811.2	0.00	0.00	0.00
7,800.0	90.00	89.58	7,053.0	321.6	899.3	911.1	0.00	0.00	0.00
7,900.0	90.00	89.58	7,053.0	322.3	999.3	1,011.1	0.00	0.00	0.00
8,000.0	90.00	89.58	7,053.0	323.1	1,099.3	1,111.0	0.00	0.00	0.00
8,100.0	90.00	89.58	7,053.0	323.8	1,199.3	1,211.0	0.00	0.00	0.00
8,200.0	90.00	89.58	7,053.0	324.5	1,299.3	1,310.9	0.00	0.00	0.00
8,300.0	90.00	89.58	7,053.0	325.3	1,399.3	1,410.9	0.00	0.00	0.00
8,400.0	90.00	89.58	7,053.0	326.0	1,499.3	1,510.8	0.00	0.00	0.00
8,500.0	90.00	89.58	7,053.0	326.7	1,599.3	1,610.8	0.00	0.00	0.00
8,600.0	90.00	89.58	7,053.0	327.5	1,699.3	1,710.7	0.00	0.00	0.00
8,700.0	90.00	89.58	7,053.0	328.2	1,799.3	1,810.7	0.00	0.00	0.00
8,800.0	90.00	89.58	7,053.0	329.0	1,899.3	1,910.6	0.00	0.00	0.00
8,900.0	90.00	89.58	7,053.0	329.7	1,999.3	2,010.6	0.00	0.00	0.00
9,000.0	90.00	89.58	7,053.0	330.4	2,099.3	2,110.5	0.00	0.00	0.00
9,100.0	90.00	89.58	7,053.0	331.2	2,199.3	2,210.5	0.00	0.00	0.00
9,200.0	90.00	89.58	7,053.0	331.9	2,299.2	2,310.4	0.00	0.00	0.00
9,300.0	90.00	89.58	7,053.0	332.6	2,399.2	2,410.4	0.00	0.00	0.00
9,400.0	90.00	89.58	7,053.0	333.4	2,499.2	2,510.3	0.00	0.00	0.00
9,500.0	90.00	89.58	7,053.0	334.1	2,599.2	2,610.3	0.00	0.00	0.00
9,600.0	90.00	89.58	7,053.0	334.8	2,699.2	2,710.2	0.00	0.00	0.00
9,700.0	90.00	89.58	7,053.0	335.6	2,799.2	2,810.2	0.00	0.00	0.00

**Database:** Landmark  
**Company:** Synergy Resources  
**Project:** Sec.5-T5N-R66W  
**Site:** SRC Wiedeman Pad Sec.5-T5N-R66W  
**Well:** SRC Wiedeman 11-5-3NCHZ  
**Wellbore:** Wellbore #1  
**Design:** Plan #3 (9-24-14)

**Local Co-ordinate Reference:** Well SRC Wiedeman 11-5-3NCHZ  
**TVD Reference:** WELL @ 4796.0ft (RKB - 13')  
**MD Reference:** WELL @ 4796.0ft (RKB - 13')  
**North Reference:** True  
**Survey Calculation Method:** Minimum Curvature

Planned Survey									
Measured Depth (ft)	Inclination (°)	Azimuth (°)	Vertical Depth (ft)	+N/-S (ft)	+E/-W (ft)	Vertical Section (ft)	Dogleg Rate (°/100ft)	Build Rate (°/100ft)	Turn Rate (°/100ft)
9,800.0	90.00	89.58	7,053.0	336.3	2,899.2	2,910.1	0.00	0.00	0.00
9,900.0	90.00	89.58	7,053.0	337.0	2,999.2	3,010.1	0.00	0.00	0.00
10,000.0	90.00	89.58	7,053.0	337.8	3,099.2	3,110.0	0.00	0.00	0.00
10,100.0	90.00	89.58	7,053.0	338.5	3,199.2	3,210.0	0.00	0.00	0.00
10,200.0	90.00	89.58	7,053.0	339.2	3,299.2	3,309.9	0.00	0.00	0.00
10,300.0	90.00	89.58	7,053.0	340.0	3,399.2	3,409.9	0.00	0.00	0.00
10,400.0	90.00	89.58	7,053.0	340.7	3,499.2	3,509.8	0.00	0.00	0.00
10,500.0	90.00	89.58	7,053.0	341.4	3,599.2	3,609.8	0.00	0.00	0.00
10,600.0	90.00	89.58	7,053.0	342.2	3,699.2	3,709.7	0.00	0.00	0.00
10,700.0	90.00	89.58	7,053.0	342.9	3,799.2	3,809.7	0.00	0.00	0.00
10,800.0	90.00	89.58	7,053.0	343.7	3,899.2	3,909.6	0.00	0.00	0.00
10,900.0	90.00	89.58	7,053.0	344.4	3,999.2	4,009.6	0.00	0.00	0.00
11,000.0	90.00	89.58	7,053.0	345.1	4,099.2	4,109.5	0.00	0.00	0.00
11,100.0	90.00	89.58	7,053.0	345.9	4,199.2	4,209.5	0.00	0.00	0.00
11,200.0	90.00	89.58	7,053.0	346.6	4,299.2	4,309.4	0.00	0.00	0.00
11,300.0	90.00	89.58	7,053.0	347.3	4,399.2	4,409.4	0.00	0.00	0.00
11,400.0	90.00	89.58	7,053.0	348.1	4,499.2	4,509.3	0.00	0.00	0.00
11,500.0	90.00	89.58	7,053.0	348.8	4,599.2	4,609.3	0.00	0.00	0.00
11,600.0	90.00	89.58	7,053.0	349.5	4,699.2	4,709.2	0.00	0.00	0.00
11,700.0	90.00	89.58	7,053.0	350.3	4,799.2	4,809.2	0.00	0.00	0.00
11,800.0	90.00	89.58	7,053.0	351.0	4,899.2	4,909.1	0.00	0.00	0.00
11,900.0	90.00	89.58	7,053.0	351.7	4,999.2	5,009.1	0.00	0.00	0.00
12,000.0	90.00	89.58	7,053.0	352.5	5,099.2	5,109.0	0.00	0.00	0.00
12,100.0	90.00	89.58	7,053.0	353.2	5,199.2	5,209.0	0.00	0.00	0.00
12,200.0	90.00	89.58	7,053.0	353.9	5,299.2	5,308.9	0.00	0.00	0.00
12,300.0	90.00	89.58	7,053.0	354.7	5,399.2	5,408.9	0.00	0.00	0.00
12,400.0	90.00	89.58	7,053.0	355.4	5,499.2	5,508.8	0.00	0.00	0.00
12,500.0	90.00	89.58	7,053.0	356.1	5,599.2	5,608.8	0.00	0.00	0.00
12,600.0	90.00	89.58	7,053.0	356.9	5,699.2	5,708.7	0.00	0.00	0.00
12,700.0	90.00	89.58	7,053.0	357.6	5,799.2	5,808.7	0.00	0.00	0.00
12,800.0	90.00	89.58	7,053.0	358.4	5,899.2	5,908.6	0.00	0.00	0.00
12,900.0	90.00	89.58	7,053.0	359.1	5,999.1	6,008.6	0.00	0.00	0.00
13,000.0	90.00	89.58	7,053.0	359.8	6,099.1	6,108.5	0.00	0.00	0.00
13,100.0	90.00	89.58	7,053.0	360.6	6,199.1	6,208.5	0.00	0.00	0.00
13,200.0	90.00	89.58	7,053.0	361.3	6,299.1	6,308.4	0.00	0.00	0.00
13,300.0	90.00	89.58	7,053.0	362.0	6,399.1	6,408.4	0.00	0.00	0.00
13,400.0	90.00	89.58	7,053.0	362.8	6,499.1	6,508.3	0.00	0.00	0.00
13,500.0	90.00	89.58	7,053.0	363.5	6,599.1	6,608.3	0.00	0.00	0.00
13,600.0	90.00	89.58	7,053.0	364.2	6,699.1	6,708.2	0.00	0.00	0.00
13,700.0	90.00	89.58	7,053.0	365.0	6,799.1	6,808.2	0.00	0.00	0.00
13,800.0	90.00	89.58	7,053.0	365.7	6,899.1	6,908.1	0.00	0.00	0.00
13,900.0	90.00	89.58	7,053.0	366.4	6,999.1	7,008.1	0.00	0.00	0.00
14,000.0	90.00	89.58	7,053.0	367.2	7,099.1	7,108.0	0.00	0.00	0.00
14,100.0	90.00	89.58	7,053.0	367.9	7,199.1	7,208.0	0.00	0.00	0.00
14,200.0	90.00	89.58	7,053.0	368.6	7,299.1	7,307.9	0.00	0.00	0.00
14,300.0	90.00	89.58	7,053.0	369.4	7,399.1	7,407.9	0.00	0.00	0.00
14,400.0	90.00	89.58	7,053.0	370.1	7,499.1	7,507.8	0.00	0.00	0.00
14,500.0	90.00	89.58	7,053.0	370.9	7,599.1	7,607.8	0.00	0.00	0.00
14,600.0	90.00	89.58	7,053.0	371.6	7,699.1	7,707.7	0.00	0.00	0.00
14,700.0	90.00	89.58	7,053.0	372.3	7,799.1	7,807.7	0.00	0.00	0.00
14,800.0	90.00	89.58	7,053.0	373.1	7,899.1	7,907.6	0.00	0.00	0.00
14,900.0	90.00	89.58	7,053.0	373.8	7,999.1	8,007.6	0.00	0.00	0.00
15,000.0	90.00	89.58	7,053.0	374.5	8,099.1	8,107.5	0.00	0.00	0.00
15,100.0	90.00	89.58	7,053.0	375.3	8,199.1	8,207.5	0.00	0.00	0.00

Plan Annotations					
	Measured Depth (ft)	Vertical Depth (ft)	Local Coordinates		Comment
			+N/-S	+E/-W	
			(ft)	(ft)	
	1,500.0	1,500.0	0.0	0.0	KOP #1
	6,357.1	6,336.8	314.0	-134.8	KOP #2
	7,482.1	7,053.0	319.3	581.4	End of Build



# **Synergy Resources**

**Sec.5-T5N-R66W**

**SRC Wiedeman Pad Sec.5-T5N-R66W**

**SRC Wiedeman 21-5-3CHZ**

**Wellbore #1**

**Plan #2 (9-24-14)**

## **Anticollision Report**

**25 September, 2014**



<b>Company:</b>	Synergy Resources	<b>Local Co-ordinate Reference:</b>	Well SRC Wiedeman 21-5-3CHZ
<b>Project:</b>	Sec.5-T5N-R66W	<b>TVD Reference:</b>	WELL @ 4796.0ft (RKB - 13')
<b>Reference Site:</b>	SRC Wiedeman Pad Sec.5-T5N-R66W	<b>MD Reference:</b>	WELL @ 4796.0ft (RKB - 13')
<b>Site Error:</b>	0.0ft	<b>North Reference:</b>	True
<b>Reference Well:</b>	SRC Wiedeman 21-5-3CHZ	<b>Survey Calculation Method:</b>	Minimum Curvature
<b>Well Error:</b>	0.0ft	<b>Output errors are at</b>	2.00 sigma
<b>Reference Wellbore</b>	Wellbore #1	<b>Database:</b>	Landmark
<b>Reference Design:</b>	Plan #2 (9-24-14)	<b>Offset TVD Reference:</b>	Offset Datum

<b>Reference</b>	Plan #2 (9-24-14)		
<b>Filter type:</b>	NO GLOBAL FILTER: Using user defined selection & filtering criteria		
<b>Interpolation Method:</b>	Stations	<b>Error Model:</b>	ISCWSA
<b>Depth Range:</b>	Unlimited	<b>Scan Method:</b>	Closest Approach 3D
<b>Results Limited by:</b>	Maximum center-center distance of 1,000.0ft	<b>Error Surface:</b>	Elliptical Conic
<b>Warning Levels Evaluated at:</b>	2.00 Sigma		

<b>Survey Tool Program</b>	<b>Date</b> 9/25/2014			
<b>From (ft)</b>	<b>To (ft)</b>	<b>Survey (Wellbore)</b>	<b>Tool Name</b>	<b>Description</b>
0.0	16,890.1	Plan #2 (9-24-14) (Wellbore #1)	MWD	MWD - Standard

Summary						
Site Name	Reference Measured Depth (ft)	Offset Measured Depth (ft)	Distance Between Centres (ft)	Distance Between Ellipses (ft)	Separation Factor	Warning
Existing Wells - Sec.4-T5N-R66W						
Greeley Tech Center 41-5 (Exist) - Wellbore #1 - Wellbor	8,832.7	2,257.0	25.9	-75.5	0.255	Level 1, CC, ES, SF
Kelly 2-3 (P&A) - Wellbore #1 - Wellbore #1	16,643.1	2,257.0	170.3	-148.2	0.535	Level 1, CC, ES, SF
Northridge Pad Sec.4-T5N-R66W						
Northridge 11-4D (Exist.) - Wellbore #1 - Wellbore #1	10,024.3	7,531.4	97.8	-32.8	0.749	Level 1, CC, ES, SF
Northridge 21-4D (Exist.) - Wellbore #1 - Wellbore #1	11,347.9	7,241.2	70.4	-75.6	0.482	Level 1, CC, ES, SF
Northridge 4AD (Exist.) - Wellbore #1 - Wellbore #1	10,788.2	7,202.2	881.7	745.4	6.470	CC
Northridge 4AD (Exist.) - Wellbore #1 - Wellbore #1	10,800.0	7,201.8	881.8	745.2	6.455	ES
Northridge 4AD (Exist.) - Wellbore #1 - Wellbore #1	10,900.0	7,198.2	888.8	749.4	6.377	SF
SRC Kelly Farms Pad Sec.4-T5N-R66W						
SRC Kelly Farms A-4-3NHZ - Wellbore #1 - Wellbore #1	12,109.4	7,194.9	950.7	785.4	5.753	CC
SRC Kelly Farms A-4-3NHZ - Wellbore #1 - Wellbore #1	13,900.0	8,953.0	978.8	720.5	3.790	ES
SRC Kelly Farms A-4-3NHZ - Wellbore #1 - Wellbore #1	14,200.0	9,221.1	998.3	724.4	3.644	SF
SRC Wiedeman Pad Sec.5-T5N-R66W						
SRC Wiedeman 11-5-3NCHZ - Wellbore #1 - Plan #3 (9-	500.0	500.0	30.0	28.0	14.843	CC
SRC Wiedeman 11-5-3NCHZ - Wellbore #1 - Plan #3 (9-	16,834.1	16,849.4	470.0	-88.3	0.842	Level 1, ES, SF
SRC Wiedeman 12-5-4CHZ - Wellbore #1 - Plan #3 (9-2	500.0	500.0	60.1	58.0	29.688	CC, ES
SRC Wiedeman 12-5-4CHZ - Wellbore #1 - Plan #3 (9-2	800.0	799.5	75.4	72.1	22.320	SF
SRC Wiedeman 12-5-4NCHZ - Wellbore #1 - Plan #3 (9-	500.0	500.0	75.1	73.0	37.104	CC, ES
SRC Wiedeman 12-5-4NCHZ - Wellbore #1 - Plan #3 (9-	900.0	898.7	102.4	98.6	26.741	SF
SRC Wiedeman 21-5-3NBHZ - Wellbore #1 - Plan #3 (9-	500.0	500.0	15.0	13.0	7.430	CC
SRC Wiedeman 21-5-3NBHZ - Wellbore #1 - Plan #3 (9-	16,854.0	17,033.2	302.7	-169.2	0.641	Level 1, SF
SRC Wiedeman 21-5-3NBHZ - Wellbore #1 - Plan #3 (9-	16,890.1	17,044.9	303.7	-169.4	0.642	Level 1, ES
SRC Wiedeman 22-5-4CHZ - Wellbore #1 - Wellbore #1	0.0	0.0	105.1			
SRC Wiedeman 22-5-4CHZ - Wellbore #1 - Wellbore #1	800.0	782.4	153.3	149.9	45.053	SF
SRC Wiedeman 22-5-4NBHZ - Wellbore #1 - Plan #3 (9	500.0	500.0	90.1	88.0	44.522	CC, ES
SRC Wiedeman 22-5-4NBHZ - Wellbore #1 - Plan #3 (9	800.0	799.5	105.4	102.1	31.193	SF
SRC Wiedeman A-5-3NBHZ - Wellbore #1 - Plan #3 (9-2	500.0	500.0	45.0	43.0	22.259	CC, ES
SRC Wiedeman A-5-3NBHZ - Wellbore #1 - Plan #3 (9-2	16,890.1	17,020.6	713.7	168.1	1.308	Level 3, SF

<b>Company:</b>	Synergy Resources	<b>Local Co-ordinate Reference:</b>	Well SRC Wiedeman 21-5-3CHZ
<b>Project:</b>	Sec.5-T5N-R66W	<b>TVD Reference:</b>	WELL @ 4796.0ft (RKB - 13')
<b>Reference Site:</b>	SRC Wiedeman Pad Sec.5-T5N-R66W	<b>MD Reference:</b>	WELL @ 4796.0ft (RKB - 13')
<b>Site Error:</b>	0.0ft	<b>North Reference:</b>	True
<b>Reference Well:</b>	SRC Wiedeman 21-5-3CHZ	<b>Survey Calculation Method:</b>	Minimum Curvature
<b>Well Error:</b>	0.0ft	<b>Output errors are at</b>	2.00 sigma
<b>Reference Wellbore</b>	Wellbore #1	<b>Database:</b>	Landmark
<b>Reference Design:</b>	Plan #2 (9-24-14)	<b>Offset TVD Reference:</b>	Offset Datum

Offset Design		Existing Wells - Sec.4-T5N-R66W - Greeley Tech Center 41-5 (Exist) - Wellbore #1 - Wellbore #1											Offset Site Error:	0.0 ft
Survey Program: 7811-UNKNOWN													Offset Well Error:	0.0 ft
Reference		Offset		Semi Major Axis			Distance							Warning
Measured Depth (ft)	Vertical Depth (ft)	Measured Depth (ft)	Vertical Depth (ft)	Reference (ft)	Offset (ft)	Highside Toolface (°)	Offset Wellbore Centre +N/-S (ft)	+E/-W (ft)	Between Centres (ft)	Between Ellipses (ft)	Minimum Separation (ft)	Separation Factor		
7,900.0	7,053.0	2,257.0	2,257.0	33.2	45.1	-90.00	796.5	1,940.6	933.1	855.8	77.33	12.067		
8,000.0	7,053.0	2,257.0	2,257.0	35.5	45.1	-90.00	796.5	1,940.6	833.2	753.4	79.75	10.447		
8,100.0	7,053.0	2,257.0	2,257.0	37.9	45.1	-90.00	796.5	1,940.6	733.2	651.0	82.22	8.917		
8,200.0	7,053.0	2,257.0	2,257.0	40.4	45.1	-90.00	796.5	1,940.6	633.3	548.5	84.74	7.473		
8,300.0	7,053.0	2,257.0	2,257.0	42.9	45.1	-90.00	796.5	1,940.6	533.4	446.1	87.30	6.110		
8,400.0	7,053.0	2,257.0	2,257.0	45.4	45.1	-90.00	796.5	1,940.6	433.5	343.6	89.89	4.823		
8,500.0	7,053.0	2,257.0	2,257.0	48.0	45.1	-90.00	796.5	1,940.6	333.8	241.3	92.50	3.608		
8,600.0	7,053.0	2,257.0	2,257.0	50.6	45.1	-90.00	796.5	1,940.6	234.2	139.1	95.13	2.462		
8,700.0	7,053.0	2,257.0	2,257.0	53.2	45.1	-90.00	796.5	1,940.6	135.2	37.5	97.78	1.383	Level 3	
8,800.0	7,053.0	2,257.0	2,257.0	55.9	45.1	-90.00	796.5	1,940.6	41.7	-58.7	100.45	0.415	Level 1	
8,832.7	7,053.0	2,257.0	2,257.0	56.7	45.1	-90.00	796.5	1,940.6	25.9	-75.5	101.33	0.255	Level 1, CC, ES, SF	
8,900.0	7,053.0	2,257.0	2,257.0	58.5	45.1	-90.00	796.5	1,940.6	72.0	-31.1	103.13	0.699	Level 1	
9,000.0	7,053.0	2,257.0	2,257.0	61.2	45.1	-90.00	796.5	1,940.6	169.2	63.4	105.82	1.599		
9,100.0	7,053.0	2,257.0	2,257.0	63.9	45.1	-90.00	796.5	1,940.6	268.5	160.0	108.52	2.474		
9,200.0	7,053.0	2,257.0	2,257.0	66.6	45.1	-90.00	796.5	1,940.6	368.2	256.9	111.23	3.310		
9,300.0	7,053.0	2,257.0	2,257.0	69.3	45.1	-90.00	796.5	1,940.6	468.0	354.0	113.95	4.107		
9,400.0	7,053.0	2,257.0	2,257.0	72.0	45.1	-90.00	796.5	1,940.6	567.8	451.2	116.67	4.867		
9,500.0	7,053.0	2,257.0	2,257.0	74.7	45.1	-90.00	796.5	1,940.6	667.7	548.3	119.40	5.592		
9,600.0	7,053.0	2,257.0	2,257.0	77.4	45.1	-90.00	796.5	1,940.6	767.7	645.5	122.14	6.285		
9,700.0	7,053.0	2,257.0	2,257.0	80.1	45.1	-90.00	796.5	1,940.6	867.6	742.7	124.88	6.948		
9,800.0	7,053.0	2,257.0	2,257.0	82.9	45.1	-90.00	796.5	1,940.6	967.6	840.0	127.63	7.581		

Offset Design Existing Wells - Sec.4-T5N-R66W - Kelly 2-3 (P&A) - Wellbore #1 - Wellbore #1													Offset Site Error:	0.0 ft
Survey Program: 7403-UNKNOWN													Offset Well Error:	0.0 ft
Reference		Offset		Semi Major Axis			Distance							
Measured Depth	Vertical Depth	Measured Depth	Vertical Depth	Reference	Offset	Highside Toolface	Offset Wellbore Centre		Between Centres	Between Ellipses	Minimum Separation	Separation Factor	Warning	
(ft)	(ft)	(ft)	(ft)	(ft)	(ft)	(°)	+N/-S (ft)	+E/-W (ft)	(ft)	(ft)	(ft)			
15,700.0	7,053.0	2,257.0	2,257.0	247.1	45.1	90.00	656.6	9,752.1	958.3	666.3	292.09	3.281		
15,800.0	7,053.0	2,257.0	2,257.0	249.9	45.1	90.00	656.6	9,752.1	860.1	565.2	294.89	2.917		
15,900.0	7,053.0	2,257.0	2,257.0	252.7	45.1	90.00	656.6	9,752.1	762.4	464.7	297.69	2.561		
16,000.0	7,053.0	2,257.0	2,257.0	255.5	45.1	90.00	656.6	9,752.1	665.3	364.8	300.49	2.214		
16,100.0	7,053.0	2,257.0	2,257.0	258.3	45.1	90.00	656.6	9,752.1	569.2	265.9	303.29	1.877		
16,200.0	7,053.0	2,257.0	2,257.0	261.1	45.1	90.00	656.6	9,752.1	474.7	168.6	306.09	1.551		
16,300.0	7,053.0	2,257.0	2,257.0	263.9	45.1	90.00	656.6	9,752.1	383.0	74.1	308.89	1.240	Level 2	
16,400.0	7,053.0	2,257.0	2,257.0	266.7	45.1	90.00	656.6	9,752.1	296.8	-14.9	311.70	0.952	Level 1	
16,500.0	7,053.0	2,257.0	2,257.0	269.5	45.1	90.00	656.6	9,752.1	222.4	-92.1	314.50	0.707	Level 1	
16,600.0	7,053.0	2,257.0	2,257.0	272.3	45.1	90.00	656.6	9,752.1	175.7	-141.6	317.30	0.554	Level 1	
16,643.1	7,053.0	2,257.0	2,257.0	273.5	45.1	90.00	656.6	9,752.1	170.3	-148.2	318.51	0.535	Level 1, CC, ES, SF	
16,700.0	7,053.0	2,257.0	2,257.0	275.1	45.1	90.00	656.6	9,752.1	179.5	-140.6	320.10	0.561	Level 1	
16,800.0	7,053.0	2,257.0	2,257.0	277.9	45.1	90.00	656.6	9,752.1	231.6	-91.3	322.90	0.717	Level 1	
16,890.1	7,053.0	2,257.0	2,257.0	280.4	45.1	90.00	656.6	9,752.1	300.0	-25.4	325.43	0.922	Level 1	

<b>Company:</b>	Synergy Resources	<b>Local Co-ordinate Reference:</b>	Well SRC Wiedeman 21-5-3CHZ
<b>Project:</b>	Sec.5-T5N-R66W	<b>TVD Reference:</b>	WELL @ 4796.0ft (RKB - 13')
<b>Reference Site:</b>	SRC Wiedeman Pad Sec.5-T5N-R66W	<b>MD Reference:</b>	WELL @ 4796.0ft (RKB - 13')
<b>Site Error:</b>	0.0ft	<b>North Reference:</b>	True
<b>Reference Well:</b>	SRC Wiedeman 21-5-3CHZ	<b>Survey Calculation Method:</b>	Minimum Curvature
<b>Well Error:</b>	0.0ft	<b>Output errors are at</b>	2.00 sigma
<b>Reference Wellbore</b>	Wellbore #1	<b>Database:</b>	Landmark
<b>Reference Design:</b>	Plan #2 (9-24-14)	<b>Offset TVD Reference:</b>	Offset Datum

<b>Offset Design</b> Northridge Pad Sec.4-T5N-R66W - Northridge 11-4D (Exist.) - Wellbore #1 - Wellbore #1												<b>Offset Site Error:</b>	0.0 ft
Survey Program: 147-MWD												<b>Offset Well Error:</b>	0.0 ft
Reference		Offset		Semi Major Axis			Distance						
Measured Depth (ft)	Vertical Depth (ft)	Measured Depth (ft)	Vertical Depth (ft)	Reference (ft)	Offset (ft)	Highside Toolface (°)	Offset Wellbore Centre +N/-S (ft)	+E/-W (ft)	Between Centres (ft)	Between Ellipses (ft)	Minimum Separation (ft)	Separation Factor	Warning
9,100.0	7,053.0	7,545.6	7,026.2	63.9	49.2	99.45	681.7	3,132.8	929.4	824.8	104.60	8.885	
9,200.0	7,053.0	7,543.9	7,024.5	66.6	49.2	98.49	681.7	3,132.8	830.0	722.6	107.46	7.724	
9,300.0	7,053.0	7,542.3	7,022.9	69.3	49.2	97.54	681.7	3,132.8	730.8	620.5	110.31	6.625	
9,400.0	7,053.0	7,540.7	7,021.3	72.0	49.2	96.61	681.6	3,132.9	631.9	518.7	113.16	5.584	
9,500.0	7,053.0	7,539.1	7,019.7	74.7	49.2	95.70	681.6	3,132.9	533.3	417.3	115.98	4.598	
9,600.0	7,053.0	7,537.6	7,018.2	77.4	49.2	94.80	681.6	3,132.9	435.4	316.6	118.80	3.665	
9,700.0	7,053.0	7,536.1	7,016.7	80.1	49.2	93.92	681.5	3,132.9	338.7	217.1	121.59	2.786	
9,800.0	7,053.0	7,534.6	7,015.2	82.9	49.2	93.06	681.5	3,133.0	244.7	120.3	124.37	1.967	
9,900.0	7,053.0	7,533.2	7,013.8	85.6	49.2	92.22	681.5	3,133.0	158.2	31.0	127.13	1.244	Level 2
10,000.0	7,053.0	7,531.7	7,012.4	88.3	49.2	91.39	681.5	3,133.0	100.8	-29.1	129.88	0.776	Level 1
10,024.3	7,053.0	7,531.4	7,012.0	89.0	49.2	91.19	681.4	3,133.0	97.8	-32.8	130.54	0.749	Level 1, CC, ES, SF
10,100.0	7,053.0	7,530.4	7,011.0	91.1	49.2	90.58	681.4	3,133.0	123.6	-9.0	132.60	0.932	Level 1
10,200.0	7,053.0	7,529.0	7,009.6	93.8	49.2	89.78	681.4	3,133.0	201.0	65.7	135.31	1.486	Level 3
10,300.0	7,053.0	7,527.7	7,008.3	96.6	49.2	89.00	681.4	3,133.0	292.5	154.5	137.99	2.119	
10,400.0	7,053.0	7,526.4	7,007.0	99.3	49.2	88.24	681.3	3,133.1	388.1	247.5	140.66	2.759	
10,500.0	7,053.0	7,525.1	7,005.7	102.1	49.2	87.49	681.3	3,133.1	485.6	342.3	143.30	3.388	
10,600.0	7,053.0	7,523.8	7,004.5	104.9	49.2	86.76	681.3	3,133.1	583.9	437.9	145.93	4.001	
10,700.0	7,053.0	7,522.6	7,003.2	107.6	49.2	86.04	681.3	3,133.1	682.6	534.1	148.53	4.596	
10,800.0	7,053.0	7,521.4	7,002.0	110.4	49.2	85.34	681.2	3,133.1	781.7	630.6	151.12	5.173	
10,900.0	7,053.0	7,520.2	7,000.8	113.2	49.2	84.65	681.2	3,133.1	881.0	727.3	153.68	5.733	
11,000.0	7,053.0	7,519.0	6,999.7	115.9	49.2	83.97	681.2	3,133.2	980.5	824.2	156.23	6.276	

<b>Company:</b>	Synergy Resources	<b>Local Co-ordinate Reference:</b>	Well SRC Wiedeman 21-5-3CHZ
<b>Project:</b>	Sec.5-T5N-R66W	<b>TVD Reference:</b>	WELL @ 4796.0ft (RKB - 13')
<b>Reference Site:</b>	SRC Wiedeman Pad Sec.5-T5N-R66W	<b>MD Reference:</b>	WELL @ 4796.0ft (RKB - 13')
<b>Site Error:</b>	0.0ft	<b>North Reference:</b>	True
<b>Reference Well:</b>	SRC Wiedeman 21-5-3CHZ	<b>Survey Calculation Method:</b>	Minimum Curvature
<b>Well Error:</b>	0.0ft	<b>Output errors are at</b>	2.00 sigma
<b>Reference Wellbore</b>	Wellbore #1	<b>Database:</b>	Landmark
<b>Reference Design:</b>	Plan #2 (9-24-14)	<b>Offset TVD Reference:</b>	Offset Datum

<b>Offset Design</b> Northridge Pad Sec.4-T5N-R66W - Northridge 21-4D (Exist.) - Wellbore #1 - Wellbore #1												<b>Offset Site Error:</b>	0.0 ft
Survey Program: 150-MWD												<b>Offset Well Error:</b>	0.0 ft
Reference		Offset		Semi Major Axis			Distance						
Measured Depth (ft)	Vertical Depth (ft)	Measured Depth (ft)	Vertical Depth (ft)	Reference (ft)	Offset (ft)	Highside Toolface (°)	Offset Wellbore Centre +N/-S (ft)	+E/-W (ft)	Between Centres (ft)	Between Ellipses (ft)	Minimum Separation (ft)	Separation Factor	Warning
10,400.0	7,053.0	7,269.1	7,042.0	99.3	31.5	114.99	720.1	4,455.5	950.1	838.4	111.69	8.507	
10,500.0	7,053.0	7,266.3	7,039.2	102.1	31.5	112.99	719.9	4,455.6	850.5	734.9	115.63	7.355	
10,600.0	7,053.0	7,263.4	7,036.4	104.9	31.4	110.92	719.7	4,455.7	750.9	631.4	119.56	6.281	
10,700.0	7,053.0	7,260.6	7,033.5	107.6	31.4	108.78	719.6	4,455.8	651.5	528.0	123.46	5.277	
10,800.0	7,053.0	7,257.7	7,030.6	110.4	31.4	106.56	719.4	4,455.9	552.2	424.9	127.30	4.338	
10,900.0	7,053.0	7,254.7	7,027.7	113.2	31.4	104.28	719.2	4,456.0	453.3	322.2	131.06	3.458	
11,000.0	7,053.0	7,251.8	7,024.7	115.9	31.4	101.94	719.0	4,456.1	354.9	220.1	134.71	2.634	
11,100.0	7,053.0	7,248.8	7,021.7	118.7	31.4	99.55	718.9	4,456.1	257.7	119.4	138.22	1.864	
11,200.0	7,053.0	7,245.8	7,018.7	121.5	31.4	97.10	718.7	4,456.2	163.8	22.3	141.55	1.157 Level 2	
11,300.0	7,053.0	7,242.7	7,015.7	124.3	31.4	94.61	718.5	4,456.3	85.2	-59.5	144.67	0.589 Level 1	
11,347.9	7,053.0	7,241.2	7,014.2	125.6	31.4	93.40	718.4	4,456.4	70.4	-75.6	146.09	0.482 Level 1, CC, ES, SF	
11,400.0	7,053.0	7,239.6	7,012.6	127.0	31.4	92.09	718.3	4,456.4	87.6	-60.0	147.57	0.593 Level 1	
11,500.0	7,053.0	7,236.4	7,009.4	129.8	31.4	89.54	718.1	4,456.5	167.5	17.3	150.22	1.115 Level 2	
11,600.0	7,053.0	7,233.3	7,006.3	132.6	31.4	86.98	718.0	4,456.6	261.6	109.0	152.58	1.714	
11,700.0	7,053.0	7,230.0	7,003.1	135.4	31.4	84.41	717.8	4,456.7	358.9	204.2	154.66	2.320	
11,800.0	7,053.0	7,226.8	6,999.8	138.1	31.4	81.85	717.6	4,456.8	457.3	300.9	156.43	2.923	
11,900.0	7,053.0	7,223.5	6,996.5	140.9	31.4	79.30	717.4	4,456.9	556.3	398.4	157.90	3.523	
12,000.0	7,053.0	7,220.2	6,993.2	143.7	31.4	76.78	717.2	4,457.1	655.5	496.5	159.05	4.121	
12,100.0	7,053.0	7,216.8	6,989.8	146.5	31.4	74.30	717.0	4,457.2	755.0	595.1	159.91	4.721	
12,200.0	7,053.0	7,213.4	6,986.4	149.3	31.3	71.86	716.8	4,457.3	854.5	694.1	160.47	5.325	
12,300.0	7,053.0	7,209.9	6,983.0	152.1	31.3	69.46	716.6	4,457.4	954.2	793.4	160.76	5.935	

<b>Company:</b>	Synergy Resources	<b>Local Co-ordinate Reference:</b>	Well SRC Wiedeman 21-5-3CHZ
<b>Project:</b>	Sec.5-T5N-R66W	<b>TVD Reference:</b>	WELL @ 4796.0ft (RKB - 13')
<b>Reference Site:</b>	SRC Wiedeman Pad Sec.5-T5N-R66W	<b>MD Reference:</b>	WELL @ 4796.0ft (RKB - 13')
<b>Site Error:</b>	0.0ft	<b>North Reference:</b>	True
<b>Reference Well:</b>	SRC Wiedeman 21-5-3CHZ	<b>Survey Calculation Method:</b>	Minimum Curvature
<b>Well Error:</b>	0.0ft	<b>Output errors are at</b>	2.00 sigma
<b>Reference Wellbore</b>	Wellbore #1	<b>Database:</b>	Landmark
<b>Reference Design:</b>	Plan #2 (9-24-14)	<b>Offset TVD Reference:</b>	Offset Datum

<b>Offset Design</b> Northridge Pad Sec.4-T5N-R66W - Northridge 4AD (Exist.) - Wellbore #1 - Wellbore #1												<b>Offset Site Error:</b>	0.0 ft
Survey Program: 182-MWD												<b>Offset Well Error:</b>	0.0 ft
Reference		Offset		Semi Major Axis			Distance						
Measured Depth (ft)	Vertical Depth (ft)	Measured Depth (ft)	Vertical Depth (ft)	Reference (ft)	Offset (ft)	Highside Toolface (°)	Offset Wellbore Centre +N/-S (ft)	+E/-W (ft)	Between Centres (ft)	Between Ellipses (ft)	Minimum Separation (ft)	Separation Factor	Warning
10,400.0	7,053.0	7,214.8	7,025.1	99.3	28.7	90.98	-96.9	3,902.1	963.3	837.7	125.58	7.671	
10,500.0	7,053.0	7,211.8	7,022.0	102.1	28.7	90.78	-97.0	3,902.2	927.6	799.2	128.34	7.228	
10,600.0	7,053.0	7,208.6	7,018.9	104.9	28.7	90.58	-97.0	3,902.3	901.6	770.5	131.09	6.877	
10,700.0	7,053.0	7,205.3	7,015.5	107.6	28.7	90.36	-97.0	3,902.4	886.1	752.3	133.85	6.620	
10,788.2	7,053.0	7,202.2	7,012.5	110.1	28.7	90.16	-97.0	3,902.5	881.7	745.4	136.29	6.470 CC	
10,800.0	7,053.0	7,201.8	7,012.1	110.4	28.7	90.14	-97.0	3,902.5	881.8	745.2	136.61	6.455 ES	
10,900.0	7,053.0	7,198.2	7,008.5	113.2	28.7	89.90	-97.0	3,902.6	888.8	749.4	139.37	6.377 SF	
11,000.0	7,053.0	7,194.4	7,004.7	115.9	28.7	89.65	-97.0	3,902.7	906.8	764.7	142.13	6.380	
11,100.0	7,053.0	7,190.4	7,000.7	118.7	28.6	89.40	-97.0	3,902.9	935.2	790.3	144.88	6.455	
11,200.0	7,053.0	7,186.3	6,996.6	121.5	28.6	89.13	-97.0	3,903.0	973.0	825.4	147.63	6.591	

<b>Company:</b>	Synergy Resources	<b>Local Co-ordinate Reference:</b>	Well SRC Wiedeman 21-5-3CHZ
<b>Project:</b>	Sec.5-T5N-R66W	<b>TVD Reference:</b>	WELL @ 4796.0ft (RKB - 13')
<b>Reference Site:</b>	SRC Wiedeman Pad Sec.5-T5N-R66W	<b>MD Reference:</b>	WELL @ 4796.0ft (RKB - 13')
<b>Site Error:</b>	0.0ft	<b>North Reference:</b>	True
<b>Reference Well:</b>	SRC Wiedeman 21-5-3CHZ	<b>Survey Calculation Method:</b>	Minimum Curvature
<b>Well Error:</b>	0.0ft	<b>Output errors are at</b>	2.00 sigma
<b>Reference Wellbore</b>	Wellbore #1	<b>Database:</b>	Landmark
<b>Reference Design:</b>	Plan #2 (9-24-14)	<b>Offset TVD Reference:</b>	Offset Datum

<b>Offset Design</b>												<b>Offset Site Error:</b>	0.0 ft
Survey Program: 174-MWD												<b>Offset Well Error:</b>	0.0 ft
Reference		Offset		Semi Major Axis			Distance						Warning
Measured Depth (ft)	Vertical Depth (ft)	Measured Depth (ft)	Vertical Depth (ft)	Reference (ft)	Offset (ft)	Highside Toolface (°)	Offset Wellbore Centre +N/-S (ft)	+E/-W (ft)	Between Centres (ft)	Between Ellipses (ft)	Minimum Separation (ft)	Separation Factor	
11,700.0	7,053.0	6,952.4	6,832.8	135.4	17.8	78.69	-160.6	5,026.5	995.1	847.1	148.03	6.723	
11,800.0	7,053.0	7,018.8	6,875.4	138.1	18.3	81.15	-158.0	5,077.3	976.3	823.7	152.60	6.398	
11,900.0	7,053.0	7,061.0	6,900.6	140.9	18.7	82.63	-156.0	5,111.1	962.2	805.8	156.40	6.152	
12,000.0	7,053.0	7,127.3	6,937.7	143.7	19.4	84.83	-154.2	5,166.1	953.3	792.5	160.74	5.931	
12,100.0	7,053.0	7,187.9	6,968.8	146.5	20.2	86.70	-154.9	5,218.1	950.7	785.9	164.84	5.767	
12,109.4	7,053.0	7,194.9	6,972.1	146.8	20.3	86.90	-155.0	5,224.2	950.7	785.4	165.25	5.753 CC	
12,200.0	7,053.0	7,269.5	7,004.7	149.3	21.3	88.87	-156.8	5,291.2	952.0	782.7	169.28	5.624	
12,300.0	7,053.0	7,354.4	7,034.4	152.1	22.7	90.65	-158.8	5,370.7	955.2	781.5	173.72	5.499	
12,400.0	7,053.0	7,424.7	7,053.0	154.9	24.0	91.76	-162.3	5,438.4	961.6	783.7	177.88	5.406	
12,500.0	7,053.0	7,526.0	7,073.4	157.6	26.0	92.96	-169.1	5,537.4	970.0	787.3	182.75	5.308	
12,600.0	7,053.0	7,684.2	7,086.9	160.4	29.5	93.73	-174.7	5,694.7	974.6	785.6	189.03	5.156	
12,700.0	7,053.0	7,813.0	7,083.9	163.2	32.5	93.55	-174.5	5,823.4	974.9	780.0	194.89	5.003	
12,739.4	7,053.0	7,846.7	7,083.3	164.3	33.3	93.52	-174.0	5,857.1	974.6	777.8	196.82	4.952	
12,800.0	7,053.0	7,902.0	7,082.4	166.0	34.6	93.46	-174.0	5,912.4	975.0	775.1	199.87	4.878	
12,900.0	7,053.0	8,005.4	7,081.3	168.8	37.2	93.40	-173.9	6,015.7	975.6	770.4	205.25	4.753	
12,915.4	7,053.0	8,019.7	7,081.2	169.2	37.5	93.39	-173.8	6,030.1	975.6	769.6	206.05	4.735	
13,000.0	7,053.0	8,095.7	7,080.4	171.6	39.4	93.34	-173.6	6,106.1	975.9	765.6	210.35	4.640	
13,100.0	7,053.0	8,175.1	7,079.2	174.4	41.5	93.27	-174.7	6,185.4	977.9	762.8	215.19	4.545	
13,200.0	7,053.0	8,293.8	7,076.9	177.2	44.5	93.12	-176.7	6,304.1	980.3	759.2	221.08	4.434	
13,300.0	7,053.0	8,429.1	7,075.2	180.0	48.0	93.02	-174.8	6,439.3	979.5	752.0	227.43	4.307	
13,400.0	7,053.0	8,540.9	7,074.1	182.8	51.0	92.97	-170.4	6,551.1	976.2	743.0	233.17	4.186	
13,500.0	7,053.0	8,631.8	7,071.6	185.5	53.4	92.83	-166.8	6,641.8	972.8	734.4	238.39	4.081	
13,600.0	7,053.0	8,713.7	7,068.9	188.3	55.6	92.68	-164.8	6,723.7	971.0	727.6	243.40	3.989	
13,645.8	7,053.0	8,750.7	7,068.1	189.6	56.6	92.63	-164.4	6,760.6	970.8	725.1	245.67	3.951	
13,700.0	7,053.0	8,793.0	7,067.7	191.1	57.7	92.61	-164.4	6,803.0	971.1	722.7	248.33	3.910	
13,800.0	7,053.0	8,863.7	7,067.3	193.9	59.6	92.58	-165.7	6,873.6	973.7	720.7	253.03	3.848	
13,900.0	7,053.0	8,953.0	7,066.9	196.7	62.0	92.54	-169.6	6,962.8	978.8	720.5	258.25	3.790 ES	
14,000.0	7,053.0	9,044.8	7,066.3	199.5	64.5	92.50	-174.2	7,054.6	984.5	720.9	263.55	3.735	
14,100.0	7,053.0	9,139.9	7,066.3	202.3	67.1	92.48	-179.6	7,149.5	990.9	721.9	268.94	3.684	
14,200.0	7,053.0	9,221.1	7,065.1	205.1	69.3	92.40	-185.2	7,230.5	998.3	724.4	273.96	3.644 SF	

SRC Wiedeman Pad Sec.5-T5N-R66W - SRC Wiedeman 11-5-3NCHZ - Wellbore #1 - Plan #3 (9-24-14)													Offset Site Error:	0.0 ft
Survey Program: 0-MWD													Offset Well Error:	0.0 ft
Reference		Offset		Semi Major Axis			Distance							
Measured Depth Depth (ft)	Vertical Depth (ft)	Measured Depth (ft)	Vertical Depth (ft)	Reference  (ft)	Offset  (ft)	Highside Toolface (°)	Offset Wellbore Centre +N/-S (ft)	+E/-W (ft)	Between Centres (ft)	Between Ellipses (ft)	Minimum Separation (ft)	Separation Factor	Warning	
0.0	0.0	0.0	0.0	0.0	0.0	-174.15	-29.9	-3.1	30.0					
100.0	100.0	100.0	100.0	0.1	0.1	-174.15	-29.9	-3.1	30.0	29.8	0.22	133.589		
200.0	200.0	200.0	200.0	0.3	0.3	-174.15	-29.9	-3.1	30.0	29.4	0.67	44.530		
300.0	300.0	300.0	300.0	0.6	0.6	-174.15	-29.9	-3.1	30.0	28.9	1.12	26.718		
400.0	400.0	400.0	400.0	0.8	0.8	-174.15	-29.9	-3.1	30.0	28.5	1.57	19.084		
500.0	500.0	500.0	500.0	1.0	1.0	-174.15	-29.9	-3.1	30.0	28.0	2.02	14.843	CC	
600.0	600.0	600.0	600.0	1.2	1.2	-167.96	-29.9	-3.1	31.7	29.3	2.47	12.822		
700.0	699.8	699.8	699.8	1.5	1.5	-169.64	-29.9	-3.1	36.9	33.9	2.93	12.591		
800.0	799.5	799.5	799.5	1.7	1.7	-171.59	-29.9	-3.1	45.5	42.1	3.38	13.452		
900.0	898.7	898.7	898.7	2.0	1.9	-173.34	-29.9	-3.1	57.5	53.7	3.83	15.025		
926.9	925.3	925.3	925.3	2.0	2.0	-173.75	-29.9	-3.1	61.4	57.4	3.95	15.539		
1,000.0	997.6	997.6	997.6	2.3	2.1	-174.68	-29.9	-3.1	72.2	67.9	4.28	16.863		
1,100.0	1,096.5	1,096.5	1,096.5	2.6	2.4	-175.59	-29.9	-3.1	87.0	82.3	4.74	18.369		
1,200.0	1,195.4	1,195.4	1,195.4	2.9	2.6	-176.23	-29.9	-3.1	101.8	96.6	5.19	19.604		
1,300.0	1,294.3	1,294.3	1,294.3	3.2	2.8	-176.71	-29.9	-3.1	116.6	111.0	5.65	20.634		
1,400.0	1,393.2	1,393.2	1,393.2	3.5	3.0	-177.08	-29.9	-3.1	131.4	125.3	6.11	21.506		
1,500.0	1,492.1	1,492.1	1,492.1	3.9	3.2	-177.38	-29.9	-3.1	146.3	139.7	6.57	22.252		
1,600.0	1,591.0	1,596.0	1,596.0	4.2	3.5	-177.45	-28.4	-3.7	159.7	152.6	7.04	22.667		
1,700.0	1,689.9	1,701.3	1,701.1	4.5	3.7	-177.08	-23.4	-5.8	169.6	162.1	7.52	22.565		
1,800.0	1,788.7	1,807.0	1,806.5	4.9	4.0	-176.34	-14.8	-9.5	176.1	168.1	8.00	22.021		
1,900.0	1,887.6	1,909.7	1,908.4	5.2	4.2	-175.30	-3.5	-14.4	179.7	171.3	8.48	21.194		
2,000.0	1,986.5	2,009.6	2,007.5	5.6	4.4	-174.30	7.9	-19.3	183.1	174.1	8.96	20.423		
2,100.0	2,085.4	2,109.5	2,106.6	5.9	4.7	-173.32	19.2	-24.1	186.4	177.0	9.45	19.724		
2,200.0	2,184.3	2,209.4	2,205.8	6.3	5.0	-172.39	30.5	-29.0	189.8	179.9	9.94	19.093		
2,300.0	2,283.2	2,309.3	2,304.9	6.6	5.2	-171.48	41.9	-33.9	193.3	182.9	10.44	18.516		
2,400.0	2,382.1	2,409.2	2,404.0	7.0	5.5	-170.61	53.2	-38.7	196.8	185.9	10.94	17.989		
2,500.0	2,481.0	2,509.1	2,503.2	7.3	5.8	-169.77	64.6	-43.6	200.4	188.9	11.45	17.505		
2,600.0	2,579.9	2,609.0	2,602.3	7.7	6.1	-168.96	75.9	-48.5	204.0	192.0	11.96	17.059		
2,700.0	2,678.8	2,708.9	2,701.4	8.0	6.4	-168.18	87.3	-53.3	207.6	195.2	12.47	16.647		
2,800.0	2,777.7	2,808.8	2,800.5	8.3	6.7	-167.42	98.6	-58.2	211.3	198.3	12.99	16.266		
2,900.0	2,876.6	2,908.6	2,899.7	8.7	7.0	-166.69	109.9	-63.1	215.0	201.5	13.51	15.912		
3,000.0	2,975.4	3,008.5	2,998.8	9.0	7.2	-165.98	121.3	-67.9	218.8	204.7	14.04	15.582		
3,100.0	3,074.3	3,108.4	3,097.9	9.4	7.5	-165.30	132.6	-72.8	222.6	208.0	14.57	15.275		
3,200.0	3,173.2	3,208.3	3,197.1	9.7	7.8	-164.64	144.0	-77.7	226.4	211.3	15.10	14.988		
3,300.0	3,272.1	3,308.2	3,296.2	10.1	8.1	-164.01	155.3	-82.6	230.2	214.6	15.64	14.719		
3,400.0	3,371.0	3,408.1	3,395.3	10.4	8.4	-163.39	166.6	-87.4	234.1	217.9	16.18	14.467		
3,500.0	3,469.9	3,508.0	3,494.4	10.8	8.7	-162.79	178.0	-92.3	238.0	221.2	16.72	14.229		
3,600.0	3,568.8	3,607.9	3,593.6	11.2	9.1	-162.22	189.3	-97.2	241.9	224.6	17.27	14.006		
3,700.0	3,667.7	3,707.8	3,692.7	11.5	9.4	-161.66	200.7	-102.0	245.8	228.0	17.82	13.796		
3,800.0	3,766.6	3,807.7	3,791.8	11.9	9.7	-161.12	212.0	-106.9	249.8	231.4	18.37	13.597		
3,900.0	3,865.5	3,907.6	3,891.0	12.2	10.0	-160.60	223.3	-111.8	253.8	234.8	18.92	13.409		
4,000.0	3,964.4	4,007.5	3,990.1	12.6	10.3	-160.09	234.7	-116.6	257.8	238.3	19.48	13.232		
4,100.0	4,063.3	4,107.4	4,089.2	12.9	10.6	-159.60	246.0	-121.5	261.8	241.8	20.04	13.063		
4,200.0	4,162.2	4,207.3	4,188.3	13.3	10.9	-159.12	257.4	-126.4	265.8	245.2	20.60	12.903		
4,300.0	4,261.0	4,304.3	4,284.6	13.6	11.2	-158.71	268.1	-131.0	270.1	249.0	21.14	12.778		
4,400.0	4,359.9	4,400.0	4,379.9	14.0	11.4	-158.64	276.4	-134.5	276.6	255.0	21.59	12.808		
4,500.0	4,458.8	4,489.4	4,469.2	14.3	11.6	-158.95	281.4	-136.7	285.5	263.5	22.00	12.979		
4,600.0	4,557.7	4,581.2	4,561.0	14.7	11.7	-159.58	283.9	-137.8	297.1	274.7	22.37	13.279		
4,700.0	4,656.6	4,676.9	4,656.6	15.0	11.9	-160.47	284.1	-137.9	310.8	288.1	22.74	13.669		
4,800.0	4,755.5	4,775.8	4,755.5	15.4	12.1	-161.35	284.1	-137.9	324.9	301.7	23.14	14.042		
4,900.0	4,854.4	4,874.7	4,854.4	15.7	12.3	-162.15	284.1	-137.9	339.0	315.4	23.54	14.399		
5,000.0	4,953.3	4,973.6	4,953.3	16.1	12.4	-162.89	284.1	-137.9	353.2	329.2	23.96	14.742		



<b>Company:</b>	Synergy Resources	<b>Local Co-ordinate Reference:</b>	Well SRC Wiedeman 21-5-3CHZ
<b>Project:</b>	Sec.5-T5N-R66W	<b>TVD Reference:</b>	WELL @ 4796.0ft (RKB - 13')
<b>Reference Site:</b>	SRC Wiedeman Pad Sec.5-T5N-R66W	<b>MD Reference:</b>	WELL @ 4796.0ft (RKB - 13')
<b>Site Error:</b>	0.0ft	<b>North Reference:</b>	True
<b>Reference Well:</b>	SRC Wiedeman 21-5-3CHZ	<b>Survey Calculation Method:</b>	Minimum Curvature
<b>Well Error:</b>	0.0ft	<b>Output errors are at</b>	2.00 sigma
<b>Reference Wellbore</b>	Wellbore #1	<b>Database:</b>	Landmark
<b>Reference Design:</b>	Plan #2 (9-24-14)	<b>Offset TVD Reference:</b>	Offset Datum

Offset Design												Offset Site Error:	0.0 ft
Survey Program: 0-MWD												Offset Well Error:	0.0 ft
Reference		Offset		Semi Major Axis			Distance						Warning
Measured Depth (ft)	Vertical Depth (ft)	Measured Depth (ft)	Vertical Depth (ft)	Reference (ft)	Offset (ft)	Highside Toolface (°)	Offset Wellbore Centre +N/-S (ft)	+E/-W (ft)	Between Centres (ft)	Between Ellipses (ft)	Minimum Separation (ft)	Separation Factor	
5,100.0	5,052.2	5,072.5	5,052.2	16.4	12.6	-163.57	284.1	-137.9	367.4	343.0	24.37	15.074	
5,200.0	5,151.1	5,171.4	5,151.1	16.8	12.8	-164.20	284.1	-137.9	381.7	356.9	24.79	15.393	
5,300.0	5,250.0	5,270.2	5,250.0	17.1	13.0	-164.78	284.1	-137.9	396.0	370.8	25.22	15.702	
5,400.0	5,348.9	5,369.1	5,348.9	17.5	13.2	-165.32	284.1	-137.9	410.3	384.7	25.65	15.999	
5,500.0	5,447.7	5,468.0	5,447.7	17.8	13.4	-165.83	284.1	-137.9	424.7	398.6	26.08	16.286	
5,600.0	5,546.6	5,566.9	5,546.6	18.2	13.6	-166.31	284.1	-137.9	439.1	412.6	26.51	16.564	
5,628.4	5,574.7	5,595.0	5,574.7	18.3	13.7	-166.43	284.1	-137.9	443.2	416.6	26.64	16.641	
5,700.0	5,645.7	5,665.9	5,645.7	18.5	13.8	-166.77	284.1	-137.9	452.7	425.8	26.94	16.802	
5,800.0	5,745.1	5,765.4	5,745.1	18.7	14.0	-167.11	284.1	-137.9	463.1	435.8	27.33	16.945	
5,900.0	5,844.8	5,865.1	5,844.8	18.9	14.2	-167.34	284.1	-137.9	470.1	442.4	27.68	16.979	
6,000.0	5,944.8	5,965.0	5,944.8	19.1	14.4	-167.45	284.1	-137.9	473.6	445.6	28.01	16.907	
6,055.3	6,000.0	6,020.3	6,000.0	19.2	14.5	-174.34	284.1	-137.9	474.2	441.1	33.12	14.318	
6,100.0	6,044.7	6,065.0	6,044.7	19.2	14.6	-174.34	284.1	-137.9	474.2	440.9	33.27	14.252	
6,200.0	6,144.7	6,165.0	6,144.7	19.4	14.8	-174.34	284.1	-137.9	474.2	440.5	33.63	14.101	
6,300.0	6,244.7	6,265.0	6,244.7	19.5	15.0	-174.34	284.1	-137.9	474.2	440.2	33.99	13.952	
6,392.1	6,336.8	6,357.1	6,336.8	19.7	15.2	-174.34	284.1	-137.9	474.2	439.8	34.32	13.817	
6,400.0	6,344.7	6,365.6	6,345.3	19.7	15.2	96.07	284.1	-137.8	474.2	444.5	29.62	16.009	
6,450.0	6,394.7	6,419.4	6,399.0	19.8	15.3	96.05	284.2	-135.2	474.1	444.3	29.81	15.904	
6,500.0	6,444.3	6,473.1	6,452.3	19.8	15.4	96.00	284.2	-128.5	474.1	444.1	29.98	15.813	
6,550.0	6,493.5	6,526.8	6,505.0	19.9	15.5	95.91	284.3	-117.8	474.0	443.9	30.13	15.731	
6,600.0	6,541.8	6,580.4	6,556.6	19.9	15.5	95.80	284.4	-103.3	473.9	443.7	30.27	15.655	
6,650.0	6,589.2	6,634.0	6,606.8	20.0	15.6	95.66	284.5	-85.0	473.8	443.4	30.41	15.580	
6,700.0	6,635.3	6,687.4	6,655.5	20.0	15.6	95.48	284.7	-63.0	473.7	443.1	30.56	15.499	
6,750.0	6,680.0	6,740.7	6,702.3	20.1	15.7	95.28	284.9	-37.6	473.5	442.8	30.74	15.405	
6,800.0	6,723.0	6,793.8	6,747.0	20.2	15.7	95.05	285.1	-8.8	473.3	442.4	30.96	15.289	
6,850.0	6,764.2	6,846.8	6,789.2	20.2	15.8	94.79	285.3	23.1	473.1	441.9	31.25	15.143	
6,900.0	6,803.2	6,899.5	6,828.9	20.3	15.9	94.51	285.6	57.9	472.9	441.3	31.62	14.958	
6,950.0	6,840.0	6,952.1	6,865.7	20.4	16.0	94.21	285.8	95.4	472.8	440.6	32.10	14.726	
7,000.0	6,874.3	7,004.5	6,899.6	20.5	16.3	93.89	286.1	135.4	472.6	439.8	32.72	14.443	
7,050.0	6,906.0	7,056.7	6,930.3	20.6	16.7	93.55	286.4	177.5	472.4	438.9	33.48	14.110	
7,100.0	6,935.0	7,108.6	6,957.8	20.8	17.1	93.19	286.8	221.5	472.2	437.8	34.40	13.728	
7,150.0	6,961.0	7,160.3	6,981.9	21.0	17.7	92.81	287.1	267.3	472.0	436.5	35.48	13.305	
7,200.0	6,984.0	7,211.8	7,002.6	21.3	18.4	92.42	287.5	314.4	471.9	435.1	36.72	12.850	
7,250.0	7,003.8	7,263.0	7,019.7	21.6	19.1	92.03	287.8	362.6	471.7	433.6	38.12	12.374	
7,300.0	7,020.4	7,313.9	7,033.3	22.1	19.9	91.62	288.2	411.7	471.6	431.9	39.67	11.889	
7,350.0	7,033.6	7,364.6	7,043.4	22.7	20.8	91.20	288.5	461.4	471.5	430.2	41.34	11.406	
7,400.0	7,043.5	7,415.1	7,049.9	23.3	21.7	90.78	288.9	511.4	471.5	428.3	43.12	10.932	
7,450.0	7,049.9	7,465.3	7,052.8	24.1	22.7	90.36	289.3	561.5	471.4	426.4	44.99	10.477	
7,500.0	7,052.8	7,515.3	7,053.0	24.9	23.7	90.02	289.6	611.5	471.4	424.5	46.94	10.042	
7,517.1	7,053.0	7,532.3	7,053.0	25.2	24.1	90.00	289.8	628.5	471.4	423.8	47.63	9.896	
7,600.0	7,053.0	7,615.3	7,053.0	26.7	25.8	90.00	290.4	711.5	471.4	420.3	51.08	9.229	
7,700.0	7,053.0	7,715.3	7,053.0	28.8	28.0	90.00	291.1	811.5	471.4	415.9	55.47	8.497	
7,800.0	7,053.0	7,815.3	7,053.0	30.9	30.4	90.00	291.8	911.5	471.4	411.3	60.07	7.846	
7,900.0	7,053.0	7,915.3	7,053.0	33.2	32.8	90.00	292.6	1,011.5	471.3	406.5	64.83	7.270	
8,000.0	7,053.0	8,015.3	7,053.0	35.5	35.2	90.00	293.3	1,111.5	471.3	401.6	69.72	6.760	
8,100.0	7,053.0	8,115.3	7,053.0	37.9	37.7	90.00	294.0	1,211.5	471.3	396.6	74.71	6.309	
8,200.0	7,053.0	8,215.3	7,053.0	40.4	40.3	90.00	294.8	1,311.5	471.3	391.5	79.78	5.907	
8,300.0	7,053.0	8,315.3	7,053.0	42.9	42.9	90.00	295.5	1,411.5	471.3	386.4	84.92	5.550	
8,400.0	7,053.0	8,415.3	7,053.0	45.4	45.5	90.00	296.3	1,511.5	471.3	381.1	90.12	5.229	
8,500.0	7,053.0	8,515.3	7,053.0	48.0	48.1	90.00	297.0	1,611.5	471.3	375.9	95.36	4.942	
8,600.0	7,053.0	8,615.3	7,053.0	50.6	50.7	90.00	297.7	1,711.5	471.2	370.6	100.65	4.682	
8,700.0	7,053.0	8,715.3	7,053.0	53.2	53.4	90.00	298.5	1,811.5	471.2	365.3	105.97	4.447	

CC - Min centre to center distance or convergent point, SF - min separation factor, ES - min ellipse separation

Offset Design      SRC Wiedeman Pad Sec.5-T5N-R66W - SRC Wiedeman 11-5-3NCHZ - Wellbore #1 - Plan #3 (9-24-14)												Offset Site Error:		0.0 ft
Survey Program: 0-MWD												Offset Well Error:		0.0 ft
Reference		Offset		Semi Major Axis			Distance							
Measured Depth (ft)	Vertical Depth (ft)	Measured Depth (ft)	Vertical Depth (ft)	Reference (ft)	Offset (ft)	Highside Toolface (°)	Offset Wellbore Centre +N/-S (ft)	+E/-W (ft)	Between Centres (ft)	Between Ellipses (ft)	Minimum Separation (ft)	Separation Factor	Warning	
8,800.0	7,053.0	8,815.3	7,053.0	55.9	56.1	90.00	299.2	1,911.4	471.2	359.9	111.31	4.233		
8,900.0	7,053.0	8,915.3	7,053.0	58.5	58.8	90.00	299.9	2,011.4	471.2	354.5	116.69	4.038		
9,000.0	7,053.0	9,015.3	7,053.0	61.2	61.5	90.00	300.7	2,111.4	471.2	349.1	122.08	3.860		
9,100.0	7,053.0	9,115.3	7,053.0	63.9	64.2	90.00	301.4	2,211.4	471.2	343.7	127.49	3.696		
9,200.0	7,053.0	9,215.3	7,053.0	66.6	66.9	90.00	302.1	2,311.4	471.1	338.2	132.92	3.545		
9,300.0	7,053.0	9,315.3	7,053.0	69.3	69.6	90.00	302.9	2,411.4	471.1	332.8	138.37	3.405		
9,400.0	7,053.0	9,415.3	7,053.0	72.0	72.4	90.00	303.6	2,511.4	471.1	327.3	143.83	3.276		
9,500.0	7,053.0	9,515.3	7,053.0	74.7	75.1	90.00	304.3	2,611.4	471.1	321.8	149.30	3.156		
9,600.0	7,053.0	9,615.3	7,053.0	77.4	77.8	90.00	305.1	2,711.4	471.1	316.3	154.78	3.044		
9,700.0	7,053.0	9,715.3	7,053.0	80.1	80.6	90.00	305.8	2,811.4	471.1	310.8	160.26	2.939		
9,800.0	7,053.0	9,815.3	7,053.0	82.9	83.3	90.00	306.5	2,911.4	471.1	305.3	165.76	2.842		
9,900.0	7,053.0	9,915.3	7,053.0	85.6	86.1	90.00	307.3	3,011.4	471.0	299.8	171.27	2.750		
10,000.0	7,053.0	10,015.3	7,053.0	88.3	88.8	90.00	308.0	3,111.4	471.0	294.3	176.78	2.665		
10,100.0	7,053.0	10,115.3	7,053.0	91.1	91.6	90.00	308.7	3,211.4	471.0	288.7	182.30	2.584		
10,200.0	7,053.0	10,215.3	7,053.0	93.8	94.4	90.00	309.5	3,311.4	471.0	283.2	187.82	2.508		
10,300.0	7,053.0	10,315.3	7,053.0	96.6	97.1	90.00	310.2	3,411.4	471.0	277.6	193.35	2.436		
10,400.0	7,053.0	10,415.3	7,053.0	99.3	99.9	90.00	311.0	3,511.4	471.0	272.1	198.88	2.368		
10,500.0	7,053.0	10,515.3	7,053.0	102.1	102.7	90.00	311.7	3,611.4	471.0	266.5	204.42	2.304		
10,600.0	7,053.0	10,615.3	7,053.0	104.9	105.4	90.00	312.4	3,711.4	470.9	261.0	209.96	2.243		
10,700.0	7,053.0	10,715.3	7,053.0	107.6	108.2	90.00	313.2	3,811.4	470.9	255.4	215.51	2.185		
10,800.0	7,053.0	10,815.3	7,053.0	110.4	111.0	90.00	313.9	3,911.4	470.9	249.9	221.06	2.130		
10,900.0	7,053.0	10,915.3	7,053.0	113.2	113.8	90.00	314.6	4,011.4	470.9	244.3	226.61	2.078		
11,000.0	7,053.0	11,015.3	7,053.0	115.9	116.5	90.00	315.4	4,111.4	470.9	238.7	232.17	2.028		
11,100.0	7,053.0	11,115.3	7,053.0	118.7	119.3	90.00	316.1	4,211.4	470.9	233.1	237.73	1.981		
11,200.0	7,053.0	11,215.3	7,053.0	121.5	122.1	90.00	316.8	4,311.4	470.9	227.6	243.29	1.935		
11,300.0	7,053.0	11,315.3	7,053.0	124.3	124.9	90.00	317.6	4,411.4	470.8	222.0	248.85	1.892		
11,400.0	7,053.0	11,415.3	7,053.0	127.0	127.7	90.00	318.3	4,511.4	470.8	216.4	254.42	1.851		
11,500.0	7,053.0	11,515.3	7,053.0	129.8	130.5	90.00	319.0	4,611.4	470.8	210.8	259.98	1.811		
11,600.0	7,053.0	11,615.3	7,053.0	132.6	133.2	90.00	319.8	4,711.4	470.8	205.2	265.55	1.773		
11,700.0	7,053.0	11,715.3	7,053.0	135.4	136.0	90.00	320.5	4,811.4	470.8	199.7	271.13	1.736		
11,800.0	7,053.0	11,815.3	7,053.0	138.1	138.8	90.00	321.2	4,911.4	470.8	194.1	276.70	1.701		
11,900.0	7,053.0	11,915.3	7,053.0	140.9	141.6	90.00	322.0	5,011.4	470.8	188.5	282.27	1.668		
12,000.0	7,053.0	12,015.3	7,053.0	143.7	144.4	90.00	322.7	5,111.4	470.7	182.9	287.85	1.635		
12,100.0	7,053.0	12,115.3	7,053.0	146.5	147.2	90.00	323.4	5,211.4	470.7	177.3	293.43	1.604		
12,200.0	7,053.0	12,215.3	7,053.0	149.3	150.0	90.00	324.2	5,311.4	470.7	171.7	299.01	1.574		
12,300.0	7,053.0	12,315.3	7,053.0	152.1	152.8	90.00	324.9	5,411.4	470.7	166.1	304.59	1.545		
12,400.0	7,053.0	12,415.3	7,053.0	154.9	155.5	90.00	325.7	5,511.4	470.7	160.5	310.17	1.517		
12,500.0	7,053.0	12,515.3	7,053.0	157.6	158.3	90.00	326.4	5,611.3	470.7	154.9	315.75	1.491 Level 3		
12,600.0	7,053.0	12,615.3	7,053.0	160.4	161.1	90.00	327.1	5,711.3	470.7	149.3	321.34	1.465 Level 3		
12,700.0	7,053.0	12,715.3	7,053.0	163.2	163.9	90.00	327.9	5,811.3	470.6	143.7	326.92	1.440 Level 3		
12,800.0	7,053.0	12,815.3	7,053.0	166.0	166.7	90.00	328.6	5,911.3	470.6	138.1	332.51	1.415 Level 3		
12,900.0	7,053.0	12,915.3	7,053.0	168.8	169.5	90.00	329.3	6,011.3	470.6	132.5	338.09	1.392 Level 3		
13,000.0	7,053.0	13,015.3	7,053.0	171.6	172.3	90.00	330.1	6,111.3	470.6	126.9	343.68	1.369 Level 3		
13,100.0	7,053.0	13,115.3	7,053.0	174.4	175.1	90.00	330.8	6,211.3	470.6	121.3	349.27	1.347 Level 3		
13,200.0	7,053.0	13,215.3	7,053.0	177.2	177.9	90.00	331.5	6,311.3	470.6	115.7	354.86	1.326 Level 3		
13,300.0	7,053.0	13,315.3	7,053.0	180.0	180.7	90.00	332.3	6,411.3	470.5	110.1	360.45	1.305 Level 3		
13,400.0	7,053.0	13,415.3	7,053.0	182.8	183.5	90.00	333.0	6,511.3	470.5	104.5	366.04	1.285 Level 3		
13,500.0	7,053.0	13,515.3	7,053.0	185.5	186.3	90.00	333.7	6,611.3	470.5	98.9	371.63	1.266 Level 3		
13,600.0	7,053.0	13,615.3	7,053.0	188.3	189.1	90.00	334.5	6,711.3	470.5	93.3	377.23	1.247 Level 2		
13,700.0	7,053.0	13,715.3	7,053.0	191.1	191.9	90.00	335.2	6,811.3	470.5	87.7	382.82	1.229 Level 2		
13,800.0	7,053.0	13,815.3	7,053.0	193.9	194.7	90.00	335.9	6,911.3	470.5	82.1	388.41	1.211 Level 2		
13,900.0	7,053.0	13,915.3	7,053.0	196.7	197.5	90.00	336.7	7,011.3	470.5	76.5	394.01	1.194 Level 2		

<b>Company:</b>	Synergy Resources	<b>Local Co-ordinate Reference:</b>	Well SRC Wiedeman 21-5-3CHZ
<b>Project:</b>	Sec.5-T5N-R66W	<b>TVD Reference:</b>	WELL @ 4796.0ft (RKB - 13')
<b>Reference Site:</b>	SRC Wiedeman Pad Sec.5-T5N-R66W	<b>MD Reference:</b>	WELL @ 4796.0ft (RKB - 13')
<b>Site Error:</b>	0.0ft	<b>North Reference:</b>	True
<b>Reference Well:</b>	SRC Wiedeman 21-5-3CHZ	<b>Survey Calculation Method:</b>	Minimum Curvature
<b>Well Error:</b>	0.0ft	<b>Output errors are at</b>	2.00 sigma
<b>Reference Wellbore</b>	Wellbore #1	<b>Database:</b>	Landmark
<b>Reference Design:</b>	Plan #2 (9-24-14)	<b>Offset TVD Reference:</b>	Offset Datum

<b>Offset Design</b>												Offset Site Error:	0.0 ft
Survey Program: 0-MWD												Offset Well Error:	0.0 ft
Reference		Offset		Semi Major Axis			Distance						
Measured Depth (ft)	Vertical Depth (ft)	Measured Depth (ft)	Vertical Depth (ft)	Reference (ft)	Offset (ft)	Highside Toolface (°)	Offset Wellbore Centre +N/-S (ft)	+E/-W (ft)	Between Centres (ft)	Between Ellipses (ft)	Minimum Separation (ft)	Separation Factor	Warning
14,000.0	7,053.0	14,015.3	7,053.0	199.5	200.3	90.00	337.4	7,111.3	470.4	70.8	399.60	1.177	Level 2
14,100.0	7,053.0	14,115.3	7,053.0	202.3	203.1	90.00	338.1	7,211.3	470.4	65.2	405.20	1.161	Level 2
14,200.0	7,053.0	14,215.3	7,053.0	205.1	205.9	90.00	338.9	7,311.3	470.4	59.6	410.79	1.145	Level 2
14,300.0	7,053.0	14,315.3	7,053.0	207.9	208.7	90.00	339.6	7,411.3	470.4	54.0	416.39	1.130	Level 2
14,400.0	7,053.0	14,415.3	7,053.0	210.7	211.5	90.00	340.4	7,511.3	470.4	48.4	421.99	1.115	Level 2
14,500.0	7,053.0	14,515.3	7,053.0	213.5	214.3	90.00	341.1	7,611.3	470.4	42.8	427.58	1.100	Level 2
14,600.0	7,053.0	14,615.3	7,053.0	216.3	217.1	90.00	341.8	7,711.3	470.4	37.2	433.18	1.086	Level 2
14,700.0	7,053.0	14,715.3	7,053.0	219.1	219.9	90.00	342.6	7,811.3	470.3	31.6	438.78	1.072	Level 2
14,800.0	7,053.0	14,815.3	7,053.0	221.9	222.7	90.00	343.3	7,911.3	470.3	26.0	444.38	1.058	Level 2
14,900.0	7,053.0	14,915.3	7,053.0	224.7	225.5	90.00	344.0	8,011.3	470.3	20.3	449.98	1.045	Level 2
15,000.0	7,053.0	15,015.3	7,053.0	227.5	228.2	90.00	344.8	8,111.3	470.3	14.7	455.57	1.032	Level 2
15,100.0	7,053.0	15,115.3	7,053.0	230.3	231.0	90.00	345.5	8,211.3	470.3	9.1	461.17	1.020	Level 2
15,200.0	7,053.0	15,215.3	7,053.0	233.1	233.8	90.00	346.2	8,311.3	470.3	3.5	466.77	1.007	Level 2
15,300.0	7,053.0	15,315.3	7,053.0	235.9	236.6	90.00	347.0	8,411.3	470.3	-2.1	472.37	0.996	Level 1
15,400.0	7,053.0	15,415.3	7,053.0	238.7	239.5	90.00	347.7	8,511.3	470.2	-7.7	477.98	0.984	Level 1
15,500.0	7,053.0	15,515.3	7,053.0	241.5	242.3	90.00	348.4	8,611.3	470.2	-13.3	483.58	0.972	Level 1
15,600.0	7,053.0	15,615.3	7,053.0	244.3	245.1	90.00	349.2	8,711.3	470.2	-19.0	489.18	0.961	Level 1
15,700.0	7,053.0	15,715.3	7,053.0	247.1	247.9	90.00	349.9	8,811.3	470.2	-24.6	494.78	0.950	Level 1
15,800.0	7,053.0	15,815.3	7,053.0	249.9	250.7	90.00	350.6	8,911.3	470.2	-30.2	500.38	0.940	Level 1
15,900.0	7,053.0	15,915.3	7,053.0	252.7	253.5	90.00	351.4	9,011.3	470.2	-35.8	505.98	0.929	Level 1
16,000.0	7,053.0	16,015.3	7,053.0	255.5	256.3	90.00	352.1	9,111.3	470.2	-41.4	511.59	0.919	Level 1
16,100.0	7,053.0	16,115.3	7,053.0	258.3	259.1	90.00	352.9	9,211.3	470.1	-47.0	517.19	0.909	Level 1
16,200.0	7,053.0	16,215.3	7,053.0	261.1	261.9	90.00	353.6	9,311.2	470.1	-52.7	522.79	0.899	Level 1
16,300.0	7,053.0	16,315.3	7,053.0	263.9	264.7	90.00	354.3	9,411.2	470.1	-58.3	528.39	0.890	Level 1
16,400.0	7,053.0	16,415.3	7,053.0	266.7	267.5	90.00	355.1	9,511.2	470.1	-63.9	534.00	0.880	Level 1
16,500.0	7,053.0	16,515.3	7,053.0	269.5	270.3	90.00	355.8	9,611.2	470.1	-69.5	539.60	0.871	Level 1
16,600.0	7,053.0	16,615.3	7,053.0	272.3	273.1	90.00	356.5	9,711.2	470.1	-75.1	545.21	0.862	Level 1
16,700.0	7,053.0	16,715.3	7,053.0	275.1	275.9	90.00	357.3	9,811.2	470.1	-80.8	550.81	0.853	Level 1
16,800.0	7,053.0	16,815.3	7,053.0	277.9	278.7	90.00	358.0	9,911.2	470.0	-86.4	556.41	0.845	Level 1
16,834.1	7,053.0	16,849.4	7,053.0	278.8	279.6	90.00	358.2	9,945.4	470.0	-88.3	558.33	0.842	Level 1, ES, SF
16,890.1	7,053.0	16,859.5	7,053.0	280.4	279.9	90.00	358.3	9,955.4	472.3	-87.9	560.18	0.843	Level 1

<b>Company:</b>	Synergy Resources	<b>Local Co-ordinate Reference:</b>	Well SRC Wiedeman 21-5-3CHZ
<b>Project:</b>	Sec.5-T5N-R66W	<b>TVD Reference:</b>	WELL @ 4796.0ft (RKB - 13')
<b>Reference Site:</b>	SRC Wiedeman Pad Sec.5-T5N-R66W	<b>MD Reference:</b>	WELL @ 4796.0ft (RKB - 13')
<b>Site Error:</b>	0.0ft	<b>North Reference:</b>	True
<b>Reference Well:</b>	SRC Wiedeman 21-5-3CHZ	<b>Survey Calculation Method:</b>	Minimum Curvature
<b>Well Error:</b>	0.0ft	<b>Output errors are at</b>	2.00 sigma
<b>Reference Wellbore</b>	Wellbore #1	<b>Database:</b>	Landmark
<b>Reference Design:</b>	Plan #2 (9-24-14)	<b>Offset TVD Reference:</b>	Offset Datum

Offset Design SRC Wiedeman Pad Sec.5-T5N-R66W - SRC Wiedeman 12-5-4CHZ - Wellbore #1 - Plan #3 (9-24-14)													Offset Site Error:	0.0 ft
Survey Program: 0-MWD													Offset Well Error:	0.0 ft
Reference	Offset	Semi Major Axis			Distance									Warning
Measured Depth (ft)	Vertical Depth (ft)	Measured Depth (ft)	Vertical Depth (ft)	Reference (ft)	Offset (ft)	Highside Toolface (°)	Offset Wellbore Centre +N/-S (ft)	+E/-W (ft)	Between Centres (ft)	Between Ellipses (ft)	Minimum Separation (ft)	Separation Factor		
0.0	0.0	0.0	0.0	0.0	0.0	-174.15	-59.7	-6.1	60.1					
100.0	100.0	100.0	100.0	0.1	0.1	-174.15	-59.7	-6.1	60.1	59.8	0.22	267.196		
200.0	200.0	200.0	200.0	0.3	0.3	-174.15	-59.7	-6.1	60.1	59.4	0.67	89.065		
300.0	300.0	300.0	300.0	0.6	0.6	-174.15	-59.7	-6.1	60.1	58.9	1.12	53.439		
400.0	400.0	400.0	400.0	0.8	0.8	-174.15	-59.7	-6.1	60.1	58.5	1.57	38.171		
500.0	500.0	500.0	500.0	1.0	1.0	-174.15	-59.7	-6.1	60.1	58.0	2.02	29.688 CC, ES		
600.0	600.0	600.0	600.0	1.2	1.2	-167.62	-59.7	-6.1	61.8	59.3	2.47	24.956		
700.0	699.8	699.8	699.8	1.5	1.5	-168.57	-59.7	-6.1	66.9	64.0	2.93	22.842		
800.0	799.5	799.5	799.5	1.7	1.7	-169.85	-59.7	-6.1	75.4	72.1	3.38	22.320 SF		
900.0	898.7	898.7	898.7	2.0	1.9	-171.22	-59.7	-6.1	87.5	83.6	3.83	22.832		
926.9	925.3	925.3	925.3	2.0	2.0	-171.58	-59.7	-6.1	91.3	87.3	3.95	23.102		
1,000.0	997.6	997.6	997.6	2.3	2.1	-172.47	-59.7	-6.1	102.0	97.8	4.28	23.829		
1,100.0	1,096.5	1,096.5	1,096.5	2.6	2.4	-173.42	-59.7	-6.1	116.8	112.0	4.74	24.651		
1,200.0	1,195.4	1,195.4	1,195.4	2.9	2.6	-174.16	-59.7	-6.1	131.5	126.3	5.19	25.322		
1,300.0	1,294.3	1,294.3	1,294.3	3.2	2.8	-174.76	-59.7	-6.1	146.3	140.7	5.65	25.879		
1,400.0	1,393.2	1,393.2	1,393.2	3.5	3.0	-175.24	-59.7	-6.1	161.1	155.0	6.11	26.349		
1,500.0	1,492.1	1,488.0	1,488.0	3.9	3.2	-175.33	-60.8	-7.0	177.0	170.4	6.55	27.024		
1,600.0	1,591.0	1,581.7	1,581.6	4.2	3.4	-174.79	-64.2	-9.8	195.2	188.3	6.97	28.017		
1,700.0	1,689.9	1,674.4	1,674.0	4.5	3.6	-173.81	-69.9	-14.4	216.0	208.6	7.39	29.209		
1,800.0	1,788.7	1,769.2	1,768.2	4.9	3.8	-172.58	-77.7	-20.9	238.8	231.0	7.83	30.490		
1,900.0	1,887.6	1,866.3	1,864.8	5.2	4.0	-171.48	-86.0	-27.7	262.1	253.8	8.28	31.653		
2,000.0	1,986.5	1,963.5	1,961.4	5.6	4.2	-170.57	-94.3	-34.4	285.4	276.6	8.73	32.683		
2,100.0	2,085.4	2,060.7	2,057.9	5.9	4.4	-169.79	-102.6	-41.2	308.7	299.5	9.19	33.596		
2,200.0	2,184.3	2,157.8	2,154.5	6.3	4.7	-169.12	-110.9	-48.0	332.1	322.4	9.65	34.413		
2,300.0	2,283.2	2,255.0	2,251.0	6.6	4.9	-168.54	-119.2	-54.8	355.5	345.4	10.12	35.137		
2,400.0	2,382.1	2,352.1	2,347.6	7.0	5.2	-168.04	-127.5	-61.6	379.0	368.4	10.59	35.795		
2,500.0	2,481.0	2,449.3	2,444.2	7.3	5.4	-167.59	-135.7	-68.3	402.5	391.4	11.06	36.388		
2,600.0	2,579.9	2,546.4	2,540.7	7.7	5.7	-167.19	-144.0	-75.1	426.0	414.5	11.54	36.925		
2,700.0	2,678.8	2,643.6	2,637.3	8.0	5.9	-166.83	-152.3	-81.9	449.5	437.5	12.01	37.413		
2,800.0	2,777.7	2,740.8	2,733.9	8.3	6.2	-166.51	-160.6	-88.7	473.1	460.6	12.50	37.859		
2,900.0	2,876.6	2,837.9	2,830.4	8.7	6.5	-166.22	-168.9	-95.5	496.6	483.6	12.98	38.268		
3,000.0	2,975.4	2,935.1	2,927.0	9.0	6.8	-165.95	-177.2	-102.3	520.2	506.7	13.46	38.644		
3,100.0	3,074.3	3,032.2	3,023.6	9.4	7.0	-165.71	-185.4	-109.0	543.8	529.8	13.95	38.990		
3,200.0	3,173.2	3,129.4	3,120.1	9.7	7.3	-165.49	-193.7	-115.8	567.3	552.9	14.43	39.310		
3,300.0	3,272.1	3,226.5	3,216.7	10.1	7.6	-165.28	-202.0	-122.6	590.9	576.0	14.92	39.606		
3,400.0	3,371.0	3,323.7	3,313.3	10.4	7.9	-165.09	-210.3	-129.4	614.5	599.1	15.41	39.881		
3,500.0	3,469.9	3,420.9	3,409.8	10.8	8.2	-164.92	-218.6	-136.2	638.1	622.2	15.90	40.138		
3,600.0	3,568.8	3,518.0	3,506.4	11.2	8.5	-164.76	-226.9	-143.0	661.7	645.3	16.39	40.377		
3,700.0	3,667.7	3,615.2	3,603.0	11.5	8.7	-164.60	-235.1	-149.7	685.3	668.5	16.88	40.600		
3,800.0	3,766.6	3,712.3	3,699.5	11.9	9.0	-164.46	-243.4	-156.5	709.0	691.6	17.37	40.809		
3,900.0	3,865.5	3,809.5	3,796.1	12.2	9.3	-164.33	-251.7	-163.3	732.6	714.7	17.87	41.006		
4,000.0	3,964.4	3,906.6	3,892.7	12.6	9.6	-164.21	-260.0	-170.1	756.2	737.8	18.36	41.190		
4,100.0	4,063.3	4,003.8	3,989.2	12.9	9.9	-164.09	-268.3	-176.9	779.8	761.0	18.85	41.364		
4,200.0	4,162.2	4,101.4	4,086.3	13.3	10.2	-163.98	-276.6	-183.7	803.5	784.1	19.35	41.527		
4,300.0	4,261.0	4,230.8	4,215.1	13.6	10.5	-163.95	-285.3	-190.8	825.1	805.3	19.88	41.498		
4,400.0	4,359.9	4,362.1	4,346.3	14.0	10.8	-164.13	-289.6	-194.3	843.0	822.6	20.39	41.343		
4,500.0	4,458.8	4,474.6	4,458.8	14.3	11.0	-164.43	-289.9	-194.6	857.6	836.8	20.86	41.121		
4,600.0	4,557.7	4,573.5	4,557.7	14.7	11.1	-164.69	-289.9	-194.6	871.9	850.6	21.30	40.938		
4,700.0	4,656.6	4,672.4	4,656.6	15.0	11.3	-164.94	-289.9	-194.6	886.3	864.5	21.74	40.763		
4,800.0	4,755.5	4,771.3	4,755.5	15.4	11.5	-165.19	-289.9	-194.6	900.6	878.4	22.19	40.594		
4,900.0	4,854.4	4,870.2	4,854.4	15.7	11.7	-165.42	-289.9	-194.6	915.0	892.4	22.63	40.431		
5,000.0	4,953.3	4,969.1	4,953.3	16.1	11.8	-165.65	-289.9	-194.6	929.4	906.3	23.08	40.274		

CC - Min centre to center distance or convergent point, SF - min separation factor, ES - min ellipse separation

<b>Company:</b>	Synergy Resources	<b>Local Co-ordinate Reference:</b>	Well SRC Wiedeman 21-5-3CHZ
<b>Project:</b>	Sec.5-T5N-R66W	<b>TVD Reference:</b>	WELL @ 4796.0ft (RKB - 13')
<b>Reference Site:</b>	SRC Wiedeman Pad Sec.5-T5N-R66W	<b>MD Reference:</b>	WELL @ 4796.0ft (RKB - 13')
<b>Site Error:</b>	0.0ft	<b>North Reference:</b>	True
<b>Reference Well:</b>	SRC Wiedeman 21-5-3CHZ	<b>Survey Calculation Method:</b>	Minimum Curvature
<b>Well Error:</b>	0.0ft	<b>Output errors are at</b>	2.00 sigma
<b>Reference Wellbore</b>	Wellbore #1	<b>Database:</b>	Landmark
<b>Reference Design:</b>	Plan #2 (9-24-14)	<b>Offset TVD Reference:</b>	Offset Datum

<b>Offset Design</b> SRC Wiedeman Pad Sec.5-T5N-R66W - SRC Wiedeman 12-5-4CHZ - Wellbore #1 - Plan #3 (9-24-14)												<b>Offset Site Error:</b>	0.0 ft
Survey Program: 0-MWD												<b>Offset Well Error:</b>	0.0 ft
Reference	Offset	Semi Major Axis		Distance									Warning
Measured Depth (ft)	Vertical Depth (ft)	Measured Depth (ft)	Vertical Depth (ft)	Reference (ft)	Offset (ft)	Highside Toolface (°)	Offset Wellbore Centre +N/-S (ft)	Offset Wellbore Centre +E/-W (ft)	Between Centres (ft)	Between Ellipses (ft)	Minimum Separation (ft)	Separation Factor	
5,100.0	5,052.2	5,068.0	5,052.2	16.4	12.0	-165.88	-289.9	-194.6	943.8	920.3	23.52	40.122	
5,200.0	5,151.1	5,166.9	5,151.1	16.8	12.2	-166.09	-289.9	-194.6	958.2	934.2	23.97	39.975	
5,300.0	5,250.0	5,265.8	5,250.0	17.1	12.4	-166.30	-289.9	-194.6	972.6	948.2	24.42	39.833	
5,400.0	5,348.9	5,364.7	5,348.9	17.5	12.6	-166.51	-289.9	-194.6	987.1	962.2	24.87	39.695	

<b>Company:</b>	Synergy Resources	<b>Local Co-ordinate Reference:</b>	Well SRC Wiedeman 21-5-3CHZ
<b>Project:</b>	Sec.5-T5N-R66W	<b>TVD Reference:</b>	WELL @ 4796.0ft (RKB - 13')
<b>Reference Site:</b>	SRC Wiedeman Pad Sec.5-T5N-R66W	<b>MD Reference:</b>	WELL @ 4796.0ft (RKB - 13')
<b>Site Error:</b>	0.0ft	<b>North Reference:</b>	True
<b>Reference Well:</b>	SRC Wiedeman 21-5-3CHZ	<b>Survey Calculation Method:</b>	Minimum Curvature
<b>Well Error:</b>	0.0ft	<b>Output errors are at</b>	2.00 sigma
<b>Reference Wellbore</b>	Wellbore #1	<b>Database:</b>	Landmark
<b>Reference Design:</b>	Plan #2 (9-24-14)	<b>Offset TVD Reference:</b>	Offset Datum

Offset Design SRC Wiedeman Pad Sec.5-T5N-R66W - SRC Wiedeman 12-5-4NCHZ - Wellbore #1 - Plan #3 (9-24-14)													Offset Site Error:	0.0 ft
Survey Program: 0-MWD													Offset Well Error:	0.0 ft
Reference		Offset		Semi Major Axis			Distance							Warning
Measured Depth (ft)	Vertical Depth (ft)	Measured Depth (ft)	Vertical Depth (ft)	Reference (ft)	Offset (ft)	Highside Toolface (°)	Offset Wellbore Centre +N/-S (ft)	+E/-W (ft)	Between Centres (ft)	Between Ellipses (ft)	Minimum Separation (ft)	Separation Factor		
0.0	0.0	0.0	0.0	0.0	0.0	-174.25	-74.7	-7.5	75.1					
100.0	100.0	100.0	100.0	0.1	0.1	-174.25	-74.7	-7.5	75.1	74.8	0.22	333.937		
200.0	200.0	200.0	200.0	0.3	0.3	-174.25	-74.7	-7.5	75.1	74.4	0.67	111.312		
300.0	300.0	300.0	300.0	0.6	0.6	-174.25	-74.7	-7.5	75.1	73.9	1.12	66.787		
400.0	400.0	400.0	400.0	0.8	0.8	-174.25	-74.7	-7.5	75.1	73.5	1.57	47.705		
500.0	500.0	500.0	500.0	1.0	1.0	-174.25	-74.7	-7.5	75.1	73.0	2.02	37.104 CC, ES		
600.0	600.0	600.0	600.0	1.2	1.2	-167.66	-74.7	-7.5	76.8	74.3	2.47	31.018		
700.0	699.8	699.8	699.8	1.5	1.5	-168.42	-74.7	-7.5	81.9	79.0	2.93	27.965		
800.0	799.5	799.5	799.5	1.7	1.7	-169.50	-74.7	-7.5	90.4	87.1	3.38	26.755		
900.0	898.7	898.7	898.7	2.0	1.9	-170.70	-74.7	-7.5	102.4	98.6	3.83	26.741 SF		
926.9	925.3	925.3	925.3	2.0	2.0	-171.03	-74.7	-7.5	106.3	102.3	3.95	26.890		
1,000.0	997.6	997.6	997.6	2.3	2.1	-171.85	-74.7	-7.5	117.0	112.7	4.28	27.319		
1,100.0	1,096.5	1,092.6	1,092.6	2.6	2.3	-172.46	-76.0	-8.2	133.1	128.4	4.71	28.264		
1,200.0	1,195.4	1,186.6	1,186.4	2.9	2.5	-172.42	-80.2	-10.1	152.2	147.1	5.13	29.688		
1,300.0	1,294.3	1,279.3	1,278.9	3.2	2.7	-171.95	-86.9	-13.4	174.2	168.6	5.55	31.385		
1,400.0	1,393.2	1,371.5	1,370.5	3.5	2.9	-171.23	-96.3	-17.9	199.0	193.0	5.98	33.258		
1,500.0	1,492.1	1,468.0	1,466.3	3.9	3.1	-170.52	-107.2	-23.1	224.9	218.5	6.42	35.018		
1,600.0	1,591.0	1,564.6	1,562.1	4.2	3.3	-169.96	-118.1	-28.3	250.8	243.9	6.86	36.536		
1,700.0	1,689.9	1,661.2	1,657.9	4.5	3.6	-169.50	-128.9	-33.5	276.7	269.4	7.31	37.840		
1,800.0	1,788.7	1,757.7	1,753.7	4.9	3.8	-169.12	-139.8	-38.7	302.7	294.9	7.77	38.969		
1,900.0	1,887.6	1,854.3	1,849.5	5.2	4.1	-168.80	-150.7	-43.9	328.7	320.4	8.23	39.954		
2,000.0	1,986.5	1,950.8	1,945.3	5.6	4.4	-168.53	-161.6	-49.1	354.6	345.9	8.69	40.813		
2,100.0	2,085.4	2,047.4	2,041.1	5.9	4.7	-168.29	-172.4	-54.3	380.6	371.5	9.15	41.578		
2,200.0	2,184.3	2,143.9	2,136.9	6.3	5.0	-168.09	-183.3	-59.6	406.6	397.0	9.62	42.256		
2,300.0	2,283.2	2,240.5	2,232.7	6.6	5.3	-167.90	-194.2	-64.8	432.6	422.5	10.09	42.862		
2,400.0	2,382.1	2,337.0	2,328.5	7.0	5.5	-167.74	-205.0	-70.0	458.6	448.0	10.56	43.406		
2,500.0	2,481.0	2,433.6	2,424.3	7.3	5.8	-167.60	-215.9	-75.2	484.6	473.5	11.04	43.896		
2,600.0	2,579.9	2,530.2	2,520.1	7.7	6.1	-167.47	-226.8	-80.4	510.6	499.0	11.51	44.341		
2,700.0	2,678.8	2,626.7	2,615.9	8.0	6.4	-167.36	-237.6	-85.6	536.6	524.6	11.99	44.745		
2,800.0	2,777.7	2,723.3	2,711.7	8.3	6.7	-167.25	-248.5	-90.8	562.6	550.1	12.47	45.114		
2,900.0	2,876.6	2,819.8	2,807.5	8.7	7.1	-167.15	-259.4	-96.0	588.6	575.6	12.95	45.453		
3,000.0	2,975.4	2,916.4	2,903.3	9.0	7.4	-167.07	-270.2	-101.2	614.6	601.1	13.43	45.763		
3,100.0	3,074.3	3,012.9	2,999.1	9.4	7.7	-166.99	-281.1	-106.4	640.6	626.7	13.91	46.050		
3,200.0	3,173.2	3,109.5	3,094.9	9.7	8.0	-166.91	-292.0	-111.6	666.6	652.2	14.39	46.315		
3,300.0	3,272.1	3,206.0	3,190.7	10.1	8.3	-166.84	-302.8	-116.8	692.6	677.7	14.88	46.561		
3,400.0	3,371.0	3,302.6	3,286.5	10.4	8.6	-166.78	-313.7	-122.0	718.6	703.2	15.36	46.789		
3,500.0	3,469.9	3,399.2	3,382.3	10.8	8.9	-166.72	-324.6	-127.3	744.6	728.8	15.84	47.002		
3,600.0	3,568.8	3,495.7	3,478.1	11.2	9.2	-166.66	-335.4	-132.5	770.6	754.3	16.33	47.200		
3,700.0	3,667.7	3,592.3	3,573.9	11.5	9.5	-166.61	-346.3	-137.7	796.6	779.8	16.81	47.385		
3,800.0	3,766.6	3,688.8	3,669.7	11.9	9.8	-166.56	-357.2	-142.9	822.6	805.3	17.30	47.559		
3,900.0	3,865.5	3,785.4	3,765.5	12.2	10.2	-166.52	-368.0	-148.1	848.7	830.9	17.78	47.723		
4,000.0	3,964.4	3,881.9	3,861.3	12.6	10.5	-166.47	-378.9	-153.3	874.7	856.4	18.27	47.876		
4,100.0	4,063.3	3,978.5	3,957.1	12.9	10.8	-166.43	-389.8	-158.5	900.7	881.9	18.76	48.021		
4,200.0	4,162.2	4,075.0	4,052.9	13.3	11.1	-166.40	-400.6	-163.7	926.7	907.4	19.24	48.157		
4,300.0	4,261.0	4,171.6	4,148.7	13.6	11.4	-166.36	-411.5	-168.9	952.7	933.0	19.73	48.286		
4,400.0	4,359.9	4,268.2	4,244.5	14.0	11.7	-166.33	-422.4	-174.1	978.7	958.5	20.22	48.408		

<b>Company:</b>	Synergy Resources	<b>Local Co-ordinate Reference:</b>	Well SRC Wiedeman 21-5-3CHZ
<b>Project:</b>	Sec.5-T5N-R66W	<b>TVD Reference:</b>	WELL @ 4796.0ft (RKB - 13')
<b>Reference Site:</b>	SRC Wiedeman Pad Sec.5-T5N-R66W	<b>MD Reference:</b>	WELL @ 4796.0ft (RKB - 13')
<b>Site Error:</b>	0.0ft	<b>North Reference:</b>	True
<b>Reference Well:</b>	SRC Wiedeman 21-5-3CHZ	<b>Survey Calculation Method:</b>	Minimum Curvature
<b>Well Error:</b>	0.0ft	<b>Output errors are at</b>	2.00 sigma
<b>Reference Wellbore</b>	Wellbore #1	<b>Database:</b>	Landmark
<b>Reference Design:</b>	Plan #2 (9-24-14)	<b>Offset TVD Reference:</b>	Offset Datum

Offset Design SRC Wiedeman Pad Sec.5-T5N-R66W - SRC Wiedeman 21-5-3NBHZ - Wellbore #1 - Plan #3 (9-24-14)													Offset Site Error:	0.0 ft
Survey Program: 0-MWD													Offset Well Error:	0.0 ft
Reference		Offset		Semi Major Axis			Distance							Warning
Measured Depth (ft)	Vertical Depth (ft)	Measured Depth (ft)	Vertical Depth (ft)	Reference (ft)	Offset (ft)	Highside Toolface (°)	Offset Wellbore Centre +N/-S (ft)	+E/-W (ft)	Between Centres (ft)	Between Ellipses (ft)	Minimum Separation (ft)	Separation Factor		
0.0	0.0	0.0	0.0	0.0	0.0	-173.62	-14.9	-1.7	15.0	15.0	0.00	N/A		
100.0	100.0	100.0	100.0	0.1	0.1	-173.62	-14.9	-1.7	15.0	14.8	0.22	66.869		
200.0	200.0	200.0	200.0	0.3	0.3	-173.62	-14.9	-1.7	15.0	14.4	0.67	22.290		
300.0	300.0	300.0	300.0	0.6	0.6	-173.62	-14.9	-1.7	15.0	13.9	1.12	13.374		
400.0	400.0	400.0	400.0	0.8	0.8	-173.62	-14.9	-1.7	15.0	13.5	1.57	9.553		
500.0	500.0	500.0	500.0	1.0	1.0	-173.62	-14.9	-1.7	15.0	13.0	2.02	7.430 CC		
600.0	600.0	600.0	600.0	1.2	1.2	-168.11	-14.9	-1.7	16.7	14.3	2.47	6.762		
700.0	699.8	699.8	699.8	1.5	1.5	-170.92	-14.9	-1.7	21.9	19.0	2.93	7.473		
800.0	799.5	799.5	799.5	1.7	1.7	-173.48	-14.9	-1.7	30.5	27.1	3.38	9.030		
900.0	898.7	898.7	898.7	2.0	1.9	-175.32	-14.9	-1.7	42.6	38.8	3.83	11.136		
926.9	925.3	925.3	925.3	2.0	2.0	-175.70	-14.9	-1.7	46.5	42.6	3.95	11.772		
1,000.0	997.6	997.6	997.6	2.3	2.1	-176.52	-14.9	-1.7	57.3	53.1	4.28	13.395		
1,100.0	1,096.5	1,098.9	1,098.9	2.6	2.4	-177.05	-13.3	-2.0	70.5	65.8	4.74	14.890		
1,200.0	1,195.4	1,201.1	1,201.0	2.9	2.6	-177.04	-8.0	-3.2	80.2	75.0	5.19	15.439		
1,300.0	1,294.3	1,303.9	1,303.3	3.2	2.8	-176.68	0.8	-5.1	86.4	80.7	5.66	15.251		
1,400.0	1,393.2	1,407.0	1,405.6	3.5	3.1	-175.99	13.2	-7.9	89.0	82.8	6.14	14.493		
1,500.0	1,492.1	1,507.5	1,505.0	3.9	3.3	-175.09	27.6	-11.0	89.3	82.7	6.62	13.498		
1,600.0	1,591.0	1,607.4	1,603.9	4.2	3.6	-174.20	42.0	-14.2	89.7	82.6	7.10	12.627		
1,700.0	1,689.9	1,707.4	1,702.8	4.5	3.9	-173.32	56.4	-17.3	90.0	82.4	7.59	11.862		
1,800.0	1,788.7	1,807.4	1,801.7	4.9	4.2	-172.44	70.7	-20.5	90.4	82.3	8.08	11.187		
1,900.0	1,887.6	1,907.4	1,900.6	5.2	4.5	-171.57	85.1	-23.7	90.8	82.2	8.58	10.584		
2,000.0	1,986.5	2,007.4	1,999.5	5.6	4.8	-170.71	99.5	-26.8	91.2	82.1	9.08	10.045		
2,100.0	2,085.4	2,107.4	2,098.4	5.9	5.2	-169.86	113.8	-30.0	91.7	82.1	9.59	9.561		
2,200.0	2,184.3	2,207.4	2,197.3	6.3	5.5	-169.01	128.2	-33.1	92.1	82.0	10.10	9.122		
2,300.0	2,283.2	2,307.4	2,296.2	6.6	5.8	-168.17	142.6	-36.3	92.6	82.0	10.61	8.724		
2,400.0	2,382.1	2,407.4	2,395.1	7.0	6.1	-167.35	157.0	-39.5	93.1	82.0	11.13	8.361		
2,500.0	2,481.0	2,507.4	2,494.0	7.3	6.5	-166.53	171.3	-42.6	93.6	82.0	11.66	8.029		
2,600.0	2,579.9	2,607.3	2,592.9	7.7	6.8	-165.72	185.7	-45.8	94.1	82.0	12.19	7.724		
2,700.0	2,678.8	2,707.3	2,691.8	8.0	7.2	-164.92	200.1	-48.9	94.7	82.0	12.72	7.443		
2,800.0	2,777.7	2,807.3	2,790.7	8.3	7.5	-164.13	214.4	-52.1	95.3	82.0	13.26	7.183		
2,900.0	2,876.6	2,907.3	2,889.6	8.7	7.8	-163.35	228.8	-55.2	95.9	82.1	13.81	6.943		
3,000.0	2,975.4	3,007.3	2,988.5	9.0	8.2	-162.57	243.2	-58.4	96.5	82.1	14.36	6.719		
3,100.0	3,074.3	3,107.3	3,087.4	9.4	8.5	-161.81	257.5	-61.6	97.1	82.2	14.91	6.511		
3,200.0	3,173.2	3,207.3	3,186.3	9.7	8.8	-161.06	271.9	-64.7	97.7	82.3	15.47	6.318		
3,300.0	3,272.1	3,307.3	3,285.2	10.1	9.2	-160.32	286.3	-67.9	98.4	82.4	16.04	6.136		
3,400.0	3,371.0	3,407.3	3,384.1	10.4	9.5	-159.59	300.6	-71.0	99.1	82.5	16.61	5.967		
3,500.0	3,469.9	3,507.2	3,483.0	10.8	9.9	-158.86	315.0	-74.2	99.8	82.6	17.18	5.808		
3,600.0	3,568.8	3,607.2	3,581.9	11.2	10.2	-158.15	329.4	-77.4	100.5	82.7	17.76	5.658		
3,700.0	3,667.7	3,707.2	3,680.8	11.5	10.6	-157.45	343.7	-80.5	101.2	82.9	18.34	5.518		
3,800.0	3,766.6	3,807.2	3,779.7	11.9	10.9	-156.76	358.1	-83.7	101.9	83.0	18.93	5.385		
3,900.0	3,865.5	3,907.2	3,878.6	12.2	11.3	-156.08	372.5	-86.8	102.7	83.2	19.52	5.260		
4,000.0	3,964.4	4,007.2	3,977.5	12.6	11.6	-155.41	386.8	-90.0	103.5	83.3	20.12	5.142		
4,100.0	4,063.3	4,107.2	4,076.4	12.9	11.9	-154.74	401.2	-93.1	104.2	83.5	20.72	5.031		
4,200.0	4,162.2	4,207.2	4,175.3	13.3	12.3	-154.09	415.6	-96.3	105.0	83.7	21.33	4.925		
4,300.0	4,261.0	4,307.2	4,274.2	13.6	12.6	-153.45	429.9	-99.5	105.8	83.9	21.94	4.825		
4,400.0	4,359.9	4,407.2	4,373.1	14.0	13.0	-152.82	444.3	-102.6	106.7	84.1	22.55	4.730		
4,500.0	4,458.8	4,507.1	4,472.1	14.3	13.3	-152.20	458.7	-105.8	107.5	84.3	23.17	4.640		
4,600.0	4,557.7	4,607.1	4,571.0	14.7	13.7	-151.58	473.0	-108.9	108.3	84.6	23.79	4.554		
4,700.0	4,656.6	4,704.3	4,667.2	15.0	14.0	-151.41	485.6	-111.7	110.4	86.1	24.32	4.539		
4,800.0	4,755.5	4,800.0	4,762.5	15.4	14.2	-152.14	495.0	-113.8	115.2	90.5	24.70	4.665		
4,900.0	4,854.4	4,897.3	4,859.5	15.7	14.4	-153.66	501.2	-115.1	123.0	98.0	24.98	4.921		
5,000.0	4,953.3	4,992.9	4,955.1	16.1	14.5	-155.68	504.2	-115.8	133.6	108.4	25.19	5.305		

CC - Min centre to center distance or convergent point, SF - min separation factor, ES - min ellipse separation



SRC Wiedeman Pad Sec.5-T5N-R66W - SRC Wiedeman 21-5-3NBHZ - Wellbore #1 - Plan #3 (9-24-14)													Offset Site Error:	0.0 ft
Survey Program: 0-MWD													Offset Well Error:	0.0 ft
Reference		Offset		Semi Major Axis			Distance							
Measured Depth (ft)	Vertical Depth (ft)	Measured Depth (ft)	Vertical Depth (ft)	Reference (ft)	Offset (ft)	Highside Toolface (°)	Offset Wellbore Centre +N/-S (ft)	+E/-W (ft)	Between Centres (ft)	Between Ellipses (ft)	Minimum Separation (ft)	Separation Factor	Warning	
5,100.0	5,052.2	5,090.0	5,052.2	16.4	14.7	-157.95	504.6	-115.9	147.0	121.6	25.38	5.792		
5,200.0	5,151.1	5,188.9	5,151.1	16.8	14.8	-159.93	504.6	-115.9	160.9	135.2	25.64	6.275		
5,300.0	5,250.0	5,287.8	5,250.0	17.1	15.0	-161.60	504.6	-115.9	174.9	149.0	25.93	6.744		
5,400.0	5,348.9	5,386.7	5,348.9	17.5	15.2	-163.02	504.6	-115.9	189.1	162.8	26.26	7.199		
5,500.0	5,447.7	5,485.5	5,447.7	17.8	15.3	-164.24	504.6	-115.9	203.3	176.7	26.61	7.640		
5,600.0	5,546.6	5,584.4	5,546.6	18.2	15.5	-165.30	504.6	-115.9	217.7	190.7	26.98	8.067		
5,628.4	5,574.7	5,612.5	5,574.7	18.3	15.6	-165.57	504.6	-115.9	221.7	194.6	27.09	8.185		
5,700.0	5,645.7	5,683.5	5,645.7	18.5	15.7	-166.22	504.6	-115.9	231.2	203.8	27.35	8.452		
5,800.0	5,745.1	5,782.9	5,745.1	18.7	15.9	-166.87	504.6	-115.9	241.5	213.8	27.69	8.724		
5,900.0	5,844.8	5,882.6	5,844.8	18.9	16.0	-167.27	504.6	-115.9	248.5	220.5	28.01	8.873		
6,000.0	5,944.8	5,982.6	5,944.8	19.1	16.2	-167.47	504.6	-115.9	252.1	223.8	28.31	8.905		
6,055.3	6,000.0	6,037.8	6,000.0	19.2	16.3	-174.37	504.6	-115.9	252.6	217.7	34.96	7.227		
6,100.0	6,044.7	6,082.5	6,044.7	19.2	16.4	-174.37	504.6	-115.9	252.6	217.5	35.10	7.197		
6,200.0	6,144.7	6,182.5	6,144.7	19.4	16.6	-174.37	504.6	-115.9	252.6	217.2	35.43	7.130		
6,300.0	6,244.7	6,282.5	6,244.7	19.5	16.7	-174.37	504.6	-115.9	252.6	216.9	35.76	7.063		
6,392.1	6,336.8	6,374.6	6,336.8	19.7	16.9	-174.37	504.6	-115.9	252.6	216.5	36.07	7.003		
6,400.0	6,344.7	6,382.5	6,344.7	19.7	16.9	96.05	504.6	-115.9	252.6	222.7	29.89	8.453		
6,450.0	6,394.7	6,432.5	6,394.7	19.8	17.0	96.55	504.6	-115.9	252.9	222.7	30.13	8.393		
6,500.0	6,444.3	6,482.1	6,444.3	19.8	17.1	97.78	504.6	-115.9	253.6	223.2	30.42	8.337		
6,550.0	6,493.5	6,531.3	6,493.5	19.9	17.2	99.68	504.6	-115.9	255.0	224.3	30.75	8.293		
6,600.0	6,541.8	6,582.6	6,544.8	19.9	17.3	102.15	504.6	-114.9	257.3	226.2	31.11	8.271		
6,650.0	6,589.2	6,635.8	6,597.8	20.0	17.4	104.60	504.6	-110.1	260.1	228.6	31.43	8.275		
6,700.0	6,635.3	6,690.0	6,651.2	20.0	17.4	106.97	504.7	-101.2	263.2	231.6	31.68	8.309		
6,750.0	6,680.0	6,745.3	6,704.9	20.1	17.5	109.22	504.8	-87.9	266.8	234.9	31.86	8.372		
6,800.0	6,723.0	6,801.6	6,758.3	20.2	17.6	111.35	504.9	-70.3	270.5	238.6	31.97	8.462		
6,850.0	6,764.2	6,859.0	6,811.2	20.2	17.6	113.35	505.1	-48.0	274.5	242.5	32.01	8.574		
6,900.0	6,803.2	6,917.5	6,863.1	20.3	17.7	115.20	505.3	-21.0	278.5	246.5	32.01	8.701		
6,950.0	6,840.0	6,977.1	6,913.5	20.4	17.8	116.89	505.5	10.8	282.6	250.6	31.99	8.833		
7,000.0	6,874.3	7,037.7	6,961.8	20.5	17.8	118.42	505.8	47.3	286.5	254.5	32.01	8.951		
7,050.0	6,906.0	7,099.3	7,007.7	20.6	17.9	119.79	506.1	88.4	290.2	258.2	32.05	9.055		
7,100.0	6,935.0	7,161.8	7,050.4	20.8	18.1	120.99	506.4	134.0	293.6	261.4	32.23	9.111		
7,150.0	6,961.0	7,225.2	7,089.5	21.0	18.3	122.01	506.8	183.9	296.7	264.1	32.57	9.110		
7,200.0	6,984.0	7,289.3	7,124.4	21.3	18.6	122.85	507.2	237.6	299.4	266.2	33.12	9.039		
7,250.0	7,003.8	7,354.1	7,154.6	21.6	19.1	123.52	507.6	294.9	301.5	267.6	33.92	8.888		
7,300.0	7,020.4	7,419.3	7,179.7	22.1	19.9	124.00	508.0	355.1	303.1	268.1	35.01	8.658		
7,350.0	7,033.6	7,484.9	7,199.3	22.7	20.8	124.30	508.5	417.7	304.1	267.7	36.38	8.359		
7,400.0	7,043.5	7,550.7	7,213.1	23.3	21.8	124.41	508.9	481.9	304.5	266.4	38.03	8.006		
7,450.0	7,049.9	7,616.5	7,221.0	24.1	23.0	124.34	509.4	547.2	304.2	264.3	39.96	7.614		
7,500.0	7,052.8	7,679.1	7,223.0	24.9	24.2	124.12	509.9	609.8	303.4	261.3	42.06	7.213		
7,517.1	7,053.0	7,696.2	7,223.0	25.2	24.5	124.09	510.0	626.9	303.3	260.6	42.72	7.099		
7,600.0	7,053.0	7,779.1	7,223.0	26.7	26.2	124.09	510.6	709.8	303.3	257.7	45.56	6.656		
7,700.0	7,053.0	7,879.1	7,223.0	28.8	28.3	124.09	511.3	809.8	303.3	254.1	49.17	6.168		
7,800.0	7,053.0	7,979.1	7,223.0	30.9	30.6	124.09	512.0	909.8	303.3	250.3	52.96	5.727		
7,900.0	7,053.0	8,079.1	7,223.0	33.2	32.9	124.10	512.8	1,009.8	303.3	246.4	56.89	5.331		
8,000.0	7,053.0	8,179.1	7,223.0	35.5	35.4	124.10	513.5	1,109.8	303.3	242.3	60.93	4.977		
8,100.0	7,053.0	8,279.1	7,223.0	37.9	37.8	124.10	514.2	1,209.8	303.3	238.2	65.06	4.661		
8,200.0	7,053.0	8,379.1	7,223.0	40.4	40.3	124.10	515.0	1,309.8	303.2	234.0	69.27	4.378		
8,300.0	7,053.0	8,479.1	7,223.0	42.9	42.9	124.10	515.7	1,409.8	303.2	229.7	73.54	4.123		
8,400.0	7,053.0	8,579.1	7,223.0	45.4	45.5	124.10	516.4	1,509.8	303.2	225.4	77.87	3.894		
8,500.0	7,053.0	8,679.1	7,223.0	48.0	48.1	124.10	517.1	1,609.8	303.2	221.0	82.24	3.687		
8,600.0	7,053.0	8,779.1	7,223.0	50.6	50.7	124.10	517.9	1,709.8	303.2	216.6	86.64	3.500		
8,700.0	7,053.0	8,879.1	7,223.0	53.2	53.3	124.10	518.6	1,809.8	303.2	212.1	91.08	3.329		



<b>Company:</b>	Synergy Resources	<b>Local Co-ordinate Reference:</b>	Well SRC Wiedeman 21-5-3CHZ
<b>Project:</b>	Sec.5-T5N-R66W	<b>TVD Reference:</b>	WELL @ 4796.0ft (RKB - 13')
<b>Reference Site:</b>	SRC Wiedeman Pad Sec.5-T5N-R66W	<b>MD Reference:</b>	WELL @ 4796.0ft (RKB - 13')
<b>Site Error:</b>	0.0ft	<b>North Reference:</b>	True
<b>Reference Well:</b>	SRC Wiedeman 21-5-3CHZ	<b>Survey Calculation Method:</b>	Minimum Curvature
<b>Well Error:</b>	0.0ft	<b>Output errors are at</b>	2.00 sigma
<b>Reference Wellbore</b>	Wellbore #1	<b>Database:</b>	Landmark
<b>Reference Design:</b>	Plan #2 (9-24-14)	<b>Offset TVD Reference:</b>	Offset Datum

Offset Design SRC Wiedeman Pad Sec.5-T5N-R66W - SRC Wiedeman 21-5-3NBHZ - Wellbore #1 - Plan #3 (9-24-14)													Offset Site Error:	0.0ft
Survey Program: 0-MWD													Offset Well Error:	0.0ft
Reference		Offset		Semi Major Axis			Distance						Warning	
Measured Depth (ft)	Vertical Depth (ft)	Measured Depth (ft)	Vertical Depth (ft)	Reference (ft)	Offset (ft)	Highside Toolface (°)	Offset Wellbore Centre +N/-S (ft)	+E/-W (ft)	Between Centres (ft)	Between Ellipses (ft)	Minimum Separation (ft)	Separation Factor		
8,800.0	7,053.0	8,979.1	7,223.0	55.9	56.0	124.10	519.3	1,909.8	303.2	207.7	95.55	3.173		
8,900.0	7,053.0	9,079.1	7,223.0	58.5	58.7	124.10	520.1	2,009.8	303.2	203.2	100.04	3.031		
9,000.0	7,053.0	9,179.1	7,223.0	61.2	61.3	124.10	520.8	2,109.8	303.2	198.6	104.55	2.900		
9,100.0	7,053.0	9,279.1	7,223.0	63.9	64.0	124.10	521.5	2,209.8	303.2	194.1	109.08	2.780		
9,200.0	7,053.0	9,379.1	7,223.0	66.6	66.7	124.11	522.2	2,309.8	303.2	189.6	113.62	2.668		
9,300.0	7,053.0	9,479.1	7,223.0	69.3	69.5	124.11	523.0	2,409.8	303.2	185.0	118.18	2.565		
9,400.0	7,053.0	9,579.1	7,223.0	72.0	72.2	124.11	523.7	2,509.8	303.2	180.4	122.76	2.470		
9,500.0	7,053.0	9,679.1	7,223.0	74.7	74.9	124.11	524.4	2,609.8	303.2	175.8	127.34	2.381		
9,600.0	7,053.0	9,779.1	7,223.0	77.4	77.6	124.11	525.1	2,709.8	303.2	171.2	131.93	2.298		
9,700.0	7,053.0	9,879.1	7,223.0	80.1	80.4	124.11	525.9	2,809.8	303.2	166.6	136.53	2.220		
9,800.0	7,053.0	9,979.1	7,223.0	82.9	83.1	124.11	526.6	2,909.8	303.1	162.0	141.14	2.148		
9,900.0	7,053.0	10,079.1	7,223.0	85.6	85.9	124.11	527.3	3,009.8	303.1	157.4	145.76	2.080		
10,000.0	7,053.0	10,179.1	7,223.0	88.3	88.6	124.11	528.1	3,109.8	303.1	152.8	150.39	2.016		
10,100.0	7,053.0	10,279.1	7,223.0	91.1	91.4	124.11	528.8	3,209.8	303.1	148.1	155.02	1.955		
10,200.0	7,053.0	10,379.1	7,223.0	93.8	94.1	124.11	529.5	3,309.8	303.1	143.5	159.65	1.899		
10,300.0	7,053.0	10,479.1	7,223.0	96.6	96.9	124.11	530.2	3,409.8	303.1	138.8	164.29	1.845		
10,400.0	7,053.0	10,579.1	7,223.0	99.3	99.6	124.11	531.0	3,509.8	303.1	134.2	168.94	1.794		
10,500.0	7,053.0	10,679.1	7,223.0	102.1	102.4	124.12	531.7	3,609.8	303.1	129.5	173.59	1.746		
10,600.0	7,053.0	10,779.1	7,223.0	104.9	105.2	124.12	532.4	3,709.8	303.1	124.9	178.24	1.701		
10,700.0	7,053.0	10,879.1	7,223.0	107.6	107.9	124.12	533.2	3,809.8	303.1	120.2	182.90	1.657		
10,800.0	7,053.0	10,979.1	7,223.0	110.4	110.7	124.12	533.9	3,909.8	303.1	115.5	187.56	1.616		
10,900.0	7,053.0	11,079.1	7,223.0	113.2	113.5	124.12	534.6	4,009.8	303.1	110.9	192.22	1.577		
11,000.0	7,053.0	11,179.1	7,223.0	115.9	116.3	124.12	535.3	4,109.8	303.1	106.2	196.89	1.539		
11,100.0	7,053.0	11,279.1	7,223.0	118.7	119.0	124.12	536.1	4,209.8	303.1	101.5	201.56	1.504		
11,200.0	7,053.0	11,379.1	7,223.0	121.5	121.8	124.12	536.8	4,309.7	303.1	96.8	206.23	1.470 Level 3		
11,300.0	7,053.0	11,479.1	7,223.0	124.3	124.6	124.12	537.5	4,409.7	303.1	92.2	210.90	1.437 Level 3		
11,400.0	7,053.0	11,579.1	7,223.0	127.0	127.4	124.12	538.2	4,509.7	303.1	87.5	215.58	1.406 Level 3		
11,500.0	7,053.0	11,679.1	7,223.0	129.8	130.2	124.12	539.0	4,609.7	303.0	82.8	220.26	1.376 Level 3		
11,600.0	7,053.0	11,779.1	7,223.0	132.6	132.9	124.12	539.7	4,709.7	303.0	78.1	224.94	1.347 Level 3		
11,700.0	7,053.0	11,879.1	7,223.0	135.4	135.7	124.12	540.4	4,809.7	303.0	73.4	229.62	1.320 Level 3		
11,800.0	7,053.0	11,979.1	7,223.0	138.1	138.5	124.12	541.2	4,909.7	303.0	68.7	234.30	1.293 Level 3		
11,900.0	7,053.0	12,079.1	7,223.0	140.9	141.3	124.13	541.9	5,009.7	303.0	64.0	238.99	1.268 Level 3		
12,000.0	7,053.0	12,179.1	7,223.0	143.7	144.1	124.13	542.6	5,109.7	303.0	59.3	243.67	1.244 Level 2		
12,100.0	7,053.0	12,279.1	7,223.0	146.5	146.9	124.13	543.3	5,209.7	303.0	54.7	248.36	1.220 Level 2		
12,200.0	7,053.0	12,379.1	7,223.0	149.3	149.6	124.13	544.1	5,309.7	303.0	50.0	253.05	1.197 Level 2		
12,300.0	7,053.0	12,479.1	7,223.0	152.1	152.4	124.13	544.8	5,409.7	303.0	45.3	257.74	1.176 Level 2		
12,400.0	7,053.0	12,579.1	7,223.0	154.9	155.2	124.13	545.5	5,509.7	303.0	40.6	262.43	1.155 Level 2		
12,500.0	7,053.0	12,679.1	7,223.0	157.6	158.0	124.13	546.2	5,609.7	303.0	35.9	267.12	1.134 Level 2		
12,600.0	7,053.0	12,779.1	7,223.0	160.4	160.8	124.13	547.0	5,709.7	303.0	31.2	271.82	1.115 Level 2		
12,700.0	7,053.0	12,879.1	7,223.0	163.2	163.6	124.13	547.7	5,809.7	303.0	26.5	276.51	1.096 Level 2		
12,800.0	7,053.0	12,979.1	7,223.0	166.0	166.4	124.13	548.4	5,909.7	303.0	21.8	281.21	1.077 Level 2		
12,900.0	7,053.0	13,079.1	7,223.0	168.8	169.2	124.13	549.2	6,009.7	303.0	17.1	285.90	1.060 Level 2		
13,000.0	7,053.0	13,179.1	7,223.0	171.6	172.0	124.13	549.9	6,109.7	303.0	12.4	290.60	1.043 Level 2		
13,100.0	7,053.0	13,279.1	7,223.0	174.4	174.8	124.13	550.6	6,209.7	303.0	7.7	295.30	1.026 Level 2		
13,200.0	7,053.0	13,379.1	7,223.0	177.2	177.6	124.14	551.3	6,309.7	302.9	3.0	299.99	1.010 Level 2		
13,300.0	7,053.0	13,479.1	7,223.0	180.0	180.4	124.14	552.1	6,409.7	302.9	-1.8	304.69	0.994 Level 1		
13,400.0	7,053.0	13,579.1	7,223.0	182.8	183.1	124.14	552.8	6,509.7	302.9	-6.5	309.39	0.979 Level 1		
13,500.0	7,053.0	13,679.1	7,223.0	185.5	185.9	124.14	553.5	6,609.7	302.9	-11.2	314.09	0.964 Level 1		
13,600.0	7,053.0	13,779.1	7,223.0	188.3	188.7	124.14	554.3	6,709.7	302.9	-15.9	318.79	0.950 Level 1		
13,700.0	7,053.0	13,879.1	7,223.0	191.1	191.5	124.14	555.0	6,809.7	302.9	-20.6	323.50	0.936 Level 1		
13,800.0	7,053.0	13,979.1	7,223.0	193.9	194.3	124.14	555.7	6,909.7	302.9	-25.3	328.20	0.923 Level 1		
13,900.0	7,053.0	14,079.1	7,223.0	196.7	197.1	124.14	556.4	7,009.7	302.9	-30.0	332.90	0.910 Level 1		

CC - Min centre to center distance or convergent point, SF - min separation factor, ES - min ellipse separation

<b>Company:</b>	Synergy Resources	<b>Local Co-ordinate Reference:</b>	Well SRC Wiedeman 21-5-3CHZ
<b>Project:</b>	Sec.5-T5N-R66W	<b>TVD Reference:</b>	WELL @ 4796.0ft (RKB - 13')
<b>Reference Site:</b>	SRC Wiedeman Pad Sec.5-T5N-R66W	<b>MD Reference:</b>	WELL @ 4796.0ft (RKB - 13')
<b>Site Error:</b>	0.0ft	<b>North Reference:</b>	True
<b>Reference Well:</b>	SRC Wiedeman 21-5-3CHZ	<b>Survey Calculation Method:</b>	Minimum Curvature
<b>Well Error:</b>	0.0ft	<b>Output errors are at</b>	2.00 sigma
<b>Reference Wellbore</b>	Wellbore #1	<b>Database:</b>	Landmark
<b>Reference Design:</b>	Plan #2 (9-24-14)	<b>Offset TVD Reference:</b>	Offset Datum

Offset Design													Offset Site Error:	0.0 ft
Survey Program: 0-MWD													Offset Well Error:	0.0 ft
Reference		Offset		Semi Major Axis			Distance							Warning
Measured Depth (ft)	Vertical Depth (ft)	Measured Depth (ft)	Vertical Depth (ft)	Reference (ft)	Offset (ft)	Highside Toolface (°)	Offset Wellbore Centre +N/-S (ft)	+E/-W (ft)	Between Centres (ft)	Between Ellipses (ft)	Minimum Separation (ft)	Separation Factor		
14,000.0	7,053.0	14,179.1	7,223.0	199.5	199.9	124.14	557.2	7,109.7	302.9	-34.7	337.60	0.897	Level 1	
14,100.0	7,053.0	14,279.1	7,223.0	202.3	202.7	124.14	557.9	7,209.7	302.9	-39.4	342.31	0.885	Level 1	
14,200.0	7,053.0	14,379.1	7,223.0	205.1	205.5	124.14	558.6	7,309.7	302.9	-44.1	347.01	0.873	Level 1	
14,300.0	7,053.0	14,479.1	7,223.0	207.9	208.3	124.14	559.3	7,409.7	302.9	-48.8	351.71	0.861	Level 1	
14,400.0	7,053.0	14,579.1	7,223.0	210.7	211.1	124.14	560.1	7,509.7	302.9	-53.5	356.42	0.850	Level 1	
14,500.0	7,053.0	14,679.1	7,223.0	213.5	213.9	124.15	560.8	7,609.7	302.9	-58.3	361.12	0.839	Level 1	
14,600.0	7,053.0	14,779.1	7,223.0	216.3	216.7	124.15	561.5	7,709.7	302.9	-63.0	365.83	0.828	Level 1	
14,700.0	7,053.0	14,879.1	7,223.0	219.1	219.5	124.15	562.3	7,809.7	302.9	-67.7	370.54	0.817	Level 1	
14,800.0	7,053.0	14,979.1	7,223.0	221.9	222.3	124.15	563.0	7,909.7	302.9	-72.4	375.24	0.807	Level 1	
14,900.0	7,053.0	15,079.1	7,223.0	224.7	225.1	124.15	563.7	8,009.7	302.8	-77.1	379.95	0.797	Level 1	
15,000.0	7,053.0	15,179.1	7,223.0	227.5	227.9	124.15	564.4	8,109.6	302.8	-81.8	384.66	0.787	Level 1	
15,100.0	7,053.0	15,279.1	7,223.0	230.3	230.7	124.15	565.2	8,209.6	302.8	-86.5	389.36	0.778	Level 1	
15,200.0	7,053.0	15,379.1	7,223.0	233.1	233.5	124.15	565.9	8,309.6	302.8	-91.2	394.07	0.768	Level 1	
15,300.0	7,053.0	15,479.1	7,223.0	235.9	236.3	124.15	566.6	8,409.6	302.8	-96.0	398.78	0.759	Level 1	
15,400.0	7,053.0	15,579.1	7,223.0	238.7	239.1	124.15	567.3	8,509.6	302.8	-100.7	403.49	0.750	Level 1	
15,500.0	7,053.0	15,679.1	7,223.0	241.5	241.9	124.15	568.1	8,609.6	302.8	-105.4	408.19	0.742	Level 1	
15,600.0	7,053.0	15,779.1	7,223.0	244.3	244.7	124.15	568.8	8,709.6	302.8	-110.1	412.90	0.733	Level 1	
15,700.0	7,053.0	15,879.1	7,223.0	247.1	247.5	124.15	569.5	8,809.6	302.8	-114.8	417.61	0.725	Level 1	
15,800.0	7,053.0	15,979.1	7,223.0	249.9	250.3	124.16	570.3	8,909.6	302.8	-119.5	422.32	0.717	Level 1	
15,900.0	7,053.0	16,079.1	7,223.0	252.7	253.1	124.16	571.0	9,009.6	302.8	-124.2	427.03	0.709	Level 1	
16,000.0	7,053.0	16,179.1	7,223.0	255.5	255.9	124.16	571.7	9,109.6	302.8	-129.0	431.74	0.701	Level 1	
16,100.0	7,053.0	16,279.1	7,223.0	258.3	258.7	124.16	572.4	9,209.6	302.8	-133.7	436.45	0.694	Level 1	
16,200.0	7,053.0	16,379.1	7,223.0	261.1	261.5	124.16	573.2	9,309.6	302.8	-138.4	441.16	0.686	Level 1	
16,300.0	7,053.0	16,479.1	7,223.0	263.9	264.3	124.16	573.9	9,409.6	302.8	-143.1	445.87	0.679	Level 1	
16,400.0	7,053.0	16,579.1	7,223.0	266.7	267.1	124.16	574.6	9,509.6	302.8	-147.8	450.58	0.672	Level 1	
16,500.0	7,053.0	16,679.1	7,223.0	269.5	269.9	124.16	575.4	9,609.6	302.8	-152.5	455.29	0.665	Level 1	
16,600.0	7,053.0	16,779.1	7,223.0	272.3	272.7	124.16	576.1	9,709.6	302.7	-157.3	460.00	0.658	Level 1	
16,700.0	7,053.0	16,879.1	7,223.0	275.1	275.5	124.16	576.8	9,809.6	302.7	-162.0	464.71	0.651	Level 1	
16,800.0	7,053.0	16,979.1	7,223.0	277.9	278.3	124.16	577.5	9,909.6	302.7	-166.7	469.42	0.645	Level 1	
16,854.0	7,053.0	17,033.2	7,223.0	279.4	279.8	124.16	577.9	9,963.6	302.7	-169.2	471.96	0.641	Level 1, SF	
16,890.1	7,053.0	17,044.9	7,223.0	280.4	280.1	124.16	578.0	9,975.4	303.7	-169.4	473.09	0.642	Level 1, ES	

<b>Company:</b>	Synergy Resources	<b>Local Co-ordinate Reference:</b>	Well SRC Wiedeman 21-5-3CHZ
<b>Project:</b>	Sec.5-T5N-R66W	<b>TVD Reference:</b>	WELL @ 4796.0ft (RKB - 13')
<b>Reference Site:</b>	SRC Wiedeman Pad Sec.5-T5N-R66W	<b>MD Reference:</b>	WELL @ 4796.0ft (RKB - 13')
<b>Site Error:</b>	0.0ft	<b>North Reference:</b>	True
<b>Reference Well:</b>	SRC Wiedeman 21-5-3CHZ	<b>Survey Calculation Method:</b>	Minimum Curvature
<b>Well Error:</b>	0.0ft	<b>Output errors are at</b>	2.00 sigma
<b>Reference Wellbore</b>	Wellbore #1	<b>Database:</b>	Landmark
<b>Reference Design:</b>	Plan #2 (9-24-14)	<b>Offset TVD Reference:</b>	Offset Datum

Offset Design													Offset Site Error:	0.0 ft
Survey Program: 39-MWD													Offset Well Error:	0.0 ft
Reference		Offset		Semi Major Axis			Distance							Warning
Measured Depth (ft)	Vertical Depth (ft)	Measured Depth (ft)	Vertical Depth (ft)	Reference (ft)	Offset (ft)	Highside Toolface (°)	Offset Wellbore Centre +N/-S (ft)	+E/-W (ft)	Between Centres (ft)	Between Ellipses (ft)	Minimum Separation (ft)	Separation Factor		
0.0	0.0	0.0	0.0	0.0	0.0	-174.37	-104.6	-10.3	105.1					
100.0	100.0	99.0	99.0	0.1	0.2	-173.88	-105.0	-11.3	105.6	105.3	0.29	360.381		
200.0	200.0	198.3	198.3	0.3	0.4	-172.86	-106.1	-13.3	106.9	106.2	0.74	143.631		
300.0	300.0	297.3	297.2	0.6	0.6	-171.63	-107.7	-15.9	108.9	107.8	1.19	91.691		
400.0	400.0	396.1	396.0	0.8	0.8	-170.91	-110.6	-17.7	112.1	110.4	1.62	69.218		
500.0	500.0	495.3	495.1	1.0	1.1	-171.09	-114.5	-17.9	116.0	113.9	2.05	56.667		
600.0	600.0	592.6	592.3	1.2	1.3	-164.95	-119.6	-17.5	122.8	120.3	2.49	49.237		
700.0	699.8	689.4	688.7	1.5	1.5	-165.66	-126.6	-18.1	135.1	132.2	2.95	45.844		
800.0	799.5	782.4	781.3	1.7	1.8	-165.48	-135.4	-21.5	153.3	149.9	3.40	45.053 SF		
900.0	898.7	875.0	873.0	2.0	2.0	-165.11	-147.2	-26.6	178.2	174.4	3.87	46.073		
926.9	925.3	898.0	895.7	2.0	2.1	-165.10	-150.4	-27.8	185.9	181.9	3.99	46.586		
1,000.0	997.6	966.2	963.0	2.3	2.4	-165.26	-160.8	-31.3	207.7	203.4	4.33	48.004		
1,100.0	1,096.5	1,059.2	1,054.6	2.6	2.7	-165.40	-176.4	-36.3	239.0	234.2	4.79	49.937		
1,200.0	1,195.4	1,152.9	1,146.8	2.9	3.0	-165.48	-192.5	-41.6	270.7	265.4	5.24	51.667		
1,300.0	1,294.3	1,245.6	1,237.9	3.2	3.3	-165.80	-208.9	-45.6	302.8	297.1	5.69	53.219		
1,400.0	1,393.2	1,339.0	1,329.6	3.5	3.7	-166.21	-226.5	-48.9	335.9	329.8	6.14	54.673		
1,500.0	1,492.1	1,444.9	1,433.7	3.9	4.0	-166.82	-245.2	-51.0	367.8	361.2	6.61	55.637		
1,600.0	1,591.0	1,549.6	1,537.4	4.2	4.3	-167.30	-260.0	-53.0	396.1	389.1	7.06	56.142		
1,700.0	1,689.9	1,648.0	1,634.9	4.5	4.6	-167.55	-272.8	-55.6	423.6	416.1	7.50	56.443		
1,800.0	1,788.7	1,738.2	1,724.3	4.9	4.9	-167.68	-284.6	-58.7	451.2	443.2	7.95	56.736		
1,900.0	1,887.6	1,832.2	1,817.1	5.2	5.2	-167.53	-298.1	-64.1	480.2	471.8	8.42	57.047		
2,000.0	1,986.5	1,923.0	1,906.9	5.6	5.5	-167.56	-311.3	-67.9	509.3	500.4	8.88	57.363		
2,100.0	2,085.4	2,009.6	1,992.2	5.9	5.8	-167.41	-325.1	-73.3	539.9	530.5	9.34	57.825		
2,200.0	2,184.3	2,104.1	2,085.2	6.3	6.2	-167.38	-341.4	-78.3	571.6	561.8	9.81	58.257		
2,300.0	2,283.2	2,196.8	2,176.5	6.6	6.5	-167.48	-357.0	-81.8	602.9	592.6	10.28	58.660		
2,400.0	2,382.1	2,277.4	2,255.7	7.0	6.8	-167.58	-371.9	-84.8	635.6	624.9	10.72	59.277		
2,500.0	2,481.0	2,360.2	2,336.6	7.3	7.2	-167.67	-389.2	-88.0	670.7	659.5	11.18	59.998		
2,600.0	2,579.9	2,461.8	2,436.0	7.7	7.6	-167.89	-409.9	-90.5	705.3	693.6	11.67	60.443		
2,700.0	2,678.8	2,548.1	2,520.4	8.0	8.0	-168.01	-427.9	-93.3	740.3	728.1	12.12	61.066		
2,800.0	2,777.7	2,638.9	2,609.0	8.3	8.3	-167.88	-446.9	-99.4	775.7	763.1	12.60	61.561		
2,900.0	2,876.6	2,723.7	2,691.4	8.7	8.7	-167.71	-465.5	-105.9	812.1	799.0	13.07	62.138		
3,000.0	2,975.4	2,848.4	2,813.2	9.0	9.2	-167.46	-490.7	-115.6	846.8	833.2	13.62	62.168		
3,100.0	3,074.3	2,957.5	2,920.3	9.4	9.6	-167.37	-509.9	-122.3	879.0	864.9	14.12	62.236		
3,200.0	3,173.2	3,067.6	3,028.8	9.7	10.0	-167.36	-528.1	-127.6	910.0	895.4	14.63	62.218		
3,300.0	3,272.1	3,191.0	3,150.9	10.1	10.4	-167.49	-545.5	-131.4	938.6	923.4	15.15	61.965		
3,400.0	3,371.0	3,275.8	3,234.9	10.4	10.7	-167.56	-556.7	-134.0	966.2	950.6	15.59	61.982		
3,500.0	3,469.9	3,351.8	3,310.0	10.8	11.0	-167.54	-567.8	-137.7	995.4	979.4	16.02	62.123		

SRC Wiedeman Pad Sec.5-T5N-R66W - SRC Wiedeman 22-5-4NBHZ - Wellbore #1 - Plan #3 (9-24-1)														Offset Site Error:	0.0 ft
Survey Program: 0-MWD														Offset Well Error:	0.0 ft
Reference		Offset		Semi Major Axis			Distance							Warning	
Measured Depth (ft)	Vertical Depth (ft)	Measured Depth (ft)	Vertical Depth (ft)	Reference (ft)	Offset (ft)	Highside Toolface (°)	Offset Wellbore Centre +N/-S (ft)	+E/-W (ft)	Between Centres (ft)	Between Ellipses (ft)	Minimum Separation (ft)	Separation Factor			
0.0	0.0	0.0	0.0	0.0	0.0	-174.32	-89.6	-8.9	90.1						
100.0	100.0	100.0	100.0	0.1	0.1	-174.32	-89.6	-8.9	90.1	89.8	0.22	400.696			
200.0	200.0	200.0	200.0	0.3	0.3	-174.32	-89.6	-8.9	90.1	89.4	0.67	133.565			
300.0	300.0	300.0	300.0	0.6	0.6	-174.32	-89.6	-8.9	90.1	88.9	1.12	80.139			
400.0	400.0	400.0	400.0	0.8	0.8	-174.32	-89.6	-8.9	90.1	88.5	1.57	57.242			
500.0	500.0	500.0	500.0	1.0	1.0	-174.32	-89.6	-8.9	90.1	88.0	2.02	44.522	CC, ES		
600.0	600.0	600.0	600.0	1.2	1.2	-167.68	-89.6	-8.9	91.8	89.3	2.47	37.081			
700.0	699.8	699.8	699.8	1.5	1.5	-168.32	-89.6	-8.9	96.9	94.0	2.93	33.090			
800.0	799.5	799.5	799.5	1.7	1.7	-169.25	-89.6	-8.9	105.4	102.1	3.38	31.193	SF		
900.0	898.7	894.9	894.9	2.0	1.9	-170.07	-91.1	-9.4	119.0	115.2	3.80	31.288			
926.9	925.3	920.3	920.3	2.0	1.9	-170.23	-92.0	-9.7	123.8	119.9	3.92	31.615			
1,000.0	997.6	989.0	988.8	2.3	2.0	-170.55	-95.5	-10.9	138.2	134.0	4.22	32.775			
1,100.0	1,096.5	1,081.8	1,081.3	2.6	2.2	-170.62	-102.8	-13.2	160.7	156.0	4.64	34.627			
1,200.0	1,195.4	1,173.2	1,172.1	2.9	2.4	-170.41	-112.7	-16.5	186.1	181.0	5.07	36.713			
1,300.0	1,294.3	1,263.0	1,261.0	3.2	2.7	-170.05	-125.1	-20.6	214.4	208.9	5.51	38.954			
1,400.0	1,393.2	1,357.8	1,354.5	3.5	2.9	-169.64	-139.8	-25.4	244.5	238.5	5.95	41.091			
1,500.0	1,492.1	1,453.2	1,448.6	3.9	3.2	-169.31	-154.6	-30.3	274.6	268.2	6.39	42.936			
1,600.0	1,591.0	1,548.5	1,542.7	4.2	3.5	-169.06	-169.4	-35.1	304.6	297.8	6.85	44.500			
1,700.0	1,689.9	1,643.9	1,636.8	4.5	3.8	-168.84	-184.3	-40.0	334.7	327.4	7.30	45.839			
1,800.0	1,788.7	1,739.3	1,730.8	4.9	4.2	-168.67	-199.1	-44.9	364.8	357.0	7.77	46.979			
1,900.0	1,887.6	1,834.6	1,824.9	5.2	4.5	-168.52	-213.9	-49.7	394.9	386.7	8.23	47.986			
2,000.0	1,986.5	1,930.0	1,919.0	5.6	4.8	-168.39	-228.7	-54.6	425.0	416.3	8.70	48.865			
2,100.0	2,085.4	2,025.3	2,013.1	5.9	5.2	-168.27	-243.5	-59.5	455.1	445.9	9.17	49.638			
2,200.0	2,184.3	2,120.7	2,107.2	6.3	5.5	-168.18	-258.3	-64.4	485.2	475.5	9.64	50.325			
2,300.0	2,283.2	2,216.1	2,201.2	6.6	5.9	-168.09	-273.2	-69.2	515.3	505.2	10.12	50.937			
2,400.0	2,382.1	2,311.4	2,295.3	7.0	6.2	-168.01	-288.0	-74.1	545.4	534.8	10.59	51.486			
2,500.0	2,481.0	2,406.8	2,389.4	7.3	6.6	-167.94	-302.8	-79.0	575.5	564.4	11.07	51.981			
2,600.0	2,579.9	2,502.2	2,483.5	7.7	6.9	-167.88	-317.6	-83.8	605.6	594.0	11.55	52.429			
2,700.0	2,678.8	2,597.5	2,577.5	8.0	7.3	-167.83	-332.4	-88.7	635.7	623.6	12.03	52.836			
2,800.0	2,777.7	2,692.9	2,671.6	8.3	7.6	-167.77	-347.2	-93.6	665.8	653.3	12.51	53.207			
2,900.0	2,876.6	2,788.2	2,765.7	8.7	8.0	-167.73	-362.0	-98.4	695.9	682.9	13.00	53.547			
3,000.0	2,975.4	2,883.6	2,859.8	9.0	8.4	-167.69	-376.9	-103.3	726.0	712.5	13.48	53.860			
3,100.0	3,074.3	2,979.0	2,953.8	9.4	8.7	-167.65	-391.7	-108.2	756.1	742.1	13.96	54.148			
3,200.0	3,173.2	3,074.3	3,047.9	9.7	9.1	-167.61	-406.5	-113.0	786.2	771.7	14.45	54.414			
3,300.0	3,272.1	3,169.7	3,142.0	10.1	9.4	-167.58	-421.3	-117.9	816.3	801.3	14.93	54.661			
3,400.0	3,371.0	3,265.0	3,236.1	10.4	9.8	-167.54	-436.1	-122.8	846.4	830.9	15.42	54.890			
3,500.0	3,469.9	3,360.4	3,330.2	10.8	10.2	-167.51	-450.9	-127.7	876.5	860.6	15.91	55.103			
3,600.0	3,568.8	3,455.8	3,424.2	11.2	10.5	-167.49	-465.8	-132.5	906.6	890.2	16.39	55.302			
3,700.0	3,667.7	3,551.1	3,518.3	11.5	10.9	-167.46	-480.6	-137.4	936.7	919.8	16.88	55.488			
3,800.0	3,766.6	3,646.5	3,612.4	11.9	11.3	-167.44	-495.4	-142.3	966.8	949.4	17.37	55.662			
3,900.0	3,865.5	3,741.9	3,706.5	12.2	11.6	-167.42	-510.2	-147.1	996.9	979.0	17.86	55.826			

<b>Company:</b>	Synergy Resources	<b>Local Co-ordinate Reference:</b>	Well SRC Wiedeman 21-5-3CHZ
<b>Project:</b>	Sec.5-T5N-R66W	<b>TVD Reference:</b>	WELL @ 4796.0ft (RKB - 13')
<b>Reference Site:</b>	SRC Wiedeman Pad Sec.5-T5N-R66W	<b>MD Reference:</b>	WELL @ 4796.0ft (RKB - 13')
<b>Site Error:</b>	0.0ft	<b>North Reference:</b>	True
<b>Reference Well:</b>	SRC Wiedeman 21-5-3CHZ	<b>Survey Calculation Method:</b>	Minimum Curvature
<b>Well Error:</b>	0.0ft	<b>Output errors are at</b>	2.00 sigma
<b>Reference Wellbore</b>	Wellbore #1	<b>Database:</b>	Landmark
<b>Reference Design:</b>	Plan #2 (9-24-14)	<b>Offset TVD Reference:</b>	Offset Datum

Offset Design													Offset Site Error:	0.0 ft
Survey Program: 0-MWD													Offset Well Error:	0.0 ft
Reference		Offset		Semi Major Axis			Distance							Warning
Measured Depth (ft)	Vertical Depth (ft)	Measured Depth (ft)	Vertical Depth (ft)	Reference (ft)	Offset (ft)	Highside Toolface (°)	Offset Wellbore Centre +N/-S (ft)	+E/-W (ft)	Between Centres (ft)	Between Ellipses (ft)	Minimum Separation (ft)	Separation Factor		
0.0	0.0	0.0	0.0	0.0	0.0	-174.32	-44.8	-4.5	45.0					
100.0	100.0	100.0	100.0	0.1	0.1	-174.32	-44.8	-4.5	45.0	44.8	0.22	200.330		
200.0	200.0	200.0	200.0	0.3	0.3	-174.32	-44.8	-4.5	45.0	44.4	0.67	66.777		
300.0	300.0	300.0	300.0	0.6	0.6	-174.32	-44.8	-4.5	45.0	43.9	1.12	40.066		
400.0	400.0	400.0	400.0	0.8	0.8	-174.32	-44.8	-4.5	45.0	43.5	1.57	28.619		
500.0	500.0	500.0	500.0	1.0	1.0	-174.32	-44.8	-4.5	45.0	43.0	2.02	22.259 CC, ES		
600.0	600.0	600.0	600.0	1.2	1.2	-167.91	-44.8	-4.5	46.7	44.3	2.47	18.884		
700.0	699.8	699.8	699.8	1.5	1.5	-169.10	-44.8	-4.5	51.9	48.9	2.93	17.712		
800.0	799.5	799.5	799.5	1.7	1.7	-170.63	-44.8	-4.5	60.4	57.1	3.38	17.882		
900.0	898.7	898.7	898.7	2.0	1.9	-172.17	-44.8	-4.5	72.5	68.7	3.83	18.925		
926.9	925.3	925.3	925.3	2.0	2.0	-172.55	-44.8	-4.5	76.3	72.4	3.95	19.317		
1,000.0	997.6	997.6	997.6	2.3	2.1	-173.48	-44.8	-4.5	87.1	82.8	4.28	20.343		
1,100.0	1,096.5	1,096.5	1,096.5	2.6	2.4	-174.43	-44.8	-4.5	101.9	97.1	4.74	21.507		
1,200.0	1,195.4	1,195.4	1,195.4	2.9	2.6	-175.14	-44.8	-4.5	116.7	111.5	5.19	22.461		
1,300.0	1,294.3	1,294.3	1,294.3	3.2	2.8	-175.68	-44.8	-4.5	131.5	125.8	5.65	23.255		
1,400.0	1,393.2	1,393.2	1,393.2	3.5	3.0	-176.12	-44.8	-4.5	146.3	140.1	6.11	23.926		
1,500.0	1,492.1	1,492.1	1,492.1	3.9	3.2	-176.48	-44.8	-4.5	161.1	154.5	6.57	24.500		
1,600.0	1,591.0	1,591.0	1,591.0	4.2	3.5	-176.78	-44.8	-4.5	175.9	168.9	7.04	24.997		
1,700.0	1,689.9	1,689.9	1,689.9	4.5	3.7	-177.03	-44.8	-4.5	190.7	183.2	7.50	25.429		
1,800.0	1,788.7	1,788.7	1,788.7	4.9	3.9	-177.24	-44.8	-4.5	205.6	197.6	7.96	25.810		
1,900.0	1,887.6	1,887.6	1,887.6	5.2	4.1	-177.43	-44.8	-4.5	220.4	212.0	8.43	26.148		
2,000.0	1,986.5	1,986.5	1,986.5	5.6	4.4	-177.59	-44.8	-4.5	235.2	226.3	8.89	26.450		
2,100.0	2,085.4	2,090.4	2,090.4	5.9	4.6	-177.48	-44.0	-5.6	249.2	239.8	9.36	26.612		
2,200.0	2,184.3	2,195.6	2,195.4	6.3	4.8	-176.74	-41.0	-9.9	260.9	251.1	9.84	26.525		
2,300.0	2,283.2	2,301.0	2,300.4	6.6	5.0	-175.41	-35.7	-17.4	270.4	260.1	10.32	26.205		
2,400.0	2,382.1	2,400.4	2,399.3	7.0	5.3	-173.95	-29.8	-25.9	279.0	268.2	10.80	25.828		
2,500.0	2,481.0	2,499.7	2,498.1	7.3	5.5	-172.58	-23.8	-34.4	287.7	276.4	11.29	25.478		
2,600.0	2,579.9	2,599.1	2,596.9	7.7	5.8	-171.28	-17.9	-43.0	296.6	284.8	11.79	25.154		
2,700.0	2,678.8	2,698.5	2,695.8	8.0	6.0	-170.06	-11.9	-51.5	305.6	293.3	12.30	24.853		
2,800.0	2,777.7	2,797.9	2,794.6	8.3	6.2	-168.92	-5.9	-60.0	314.8	302.0	12.81	24.573		
2,900.0	2,876.6	2,897.3	2,893.5	8.7	6.5	-167.83	0.0	-68.5	324.1	310.8	13.33	24.313		
3,000.0	2,975.4	2,996.7	2,992.3	9.0	6.8	-166.81	6.0	-77.0	333.5	319.6	13.86	24.070		
3,100.0	3,074.3	3,096.1	3,091.1	9.4	7.0	-165.84	12.0	-85.5	343.0	328.6	14.39	23.842		
3,200.0	3,173.2	3,195.4	3,190.0	9.7	7.3	-164.93	17.9	-94.1	352.6	337.6	14.92	23.630		
3,300.0	3,272.1	3,294.8	3,288.8	10.1	7.6	-164.06	23.9	-102.6	362.2	346.8	15.46	23.430		
3,400.0	3,371.0	3,394.2	3,387.7	10.4	7.8	-163.24	29.9	-111.1	372.0	356.0	16.00	23.243		
3,500.0	3,469.9	3,493.6	3,486.5	10.8	8.1	-162.46	35.8	-119.6	381.8	365.2	16.55	23.067		
3,600.0	3,568.8	3,593.0	3,585.3	11.2	8.4	-161.72	41.8	-128.1	391.7	374.6	17.10	22.902		
3,700.0	3,667.7	3,692.4	3,684.2	11.5	8.6	-161.02	47.8	-136.7	401.6	384.0	17.66	22.746		
3,800.0	3,766.6	3,791.8	3,783.0	11.9	8.9	-160.35	53.7	-145.2	411.6	393.4	18.21	22.600		
3,900.0	3,865.5	3,886.9	3,877.7	12.2	9.1	-159.87	58.8	-152.5	422.1	403.4	18.73	22.542		
4,000.0	3,964.4	3,980.9	3,971.6	12.6	9.3	-159.80	62.1	-157.2	433.8	414.6	19.18	22.622		
4,100.0	4,063.3	4,074.7	4,065.3	12.9	9.5	-160.10	63.7	-159.4	446.7	427.1	19.59	22.802		
4,200.0	4,162.2	4,171.5	4,162.2	13.3	9.7	-160.69	63.8	-159.6	460.6	440.6	20.00	23.030		
4,300.0	4,261.0	4,270.4	4,261.0	13.6	9.9	-161.29	63.8	-159.6	474.7	454.2	20.43	23.229		
4,400.0	4,359.9	4,369.3	4,359.9	14.0	10.1	-161.84	63.8	-159.6	488.8	467.9	20.87	23.414		
4,500.0	4,458.8	4,468.2	4,458.8	14.3	10.3	-162.37	63.8	-159.6	502.9	481.6	21.32	23.592		
4,600.0	4,557.7	4,567.1	4,557.7	14.7	10.5	-162.87	63.8	-159.6	517.1	495.3	21.76	23.764		
4,700.0	4,656.6	4,666.0	4,656.6	15.0	10.7	-163.34	63.8	-159.6	531.3	509.1	22.20	23.929		
4,800.0	4,755.5	4,764.9	4,755.5	15.4	10.9	-163.79	63.8	-159.6	545.6	522.9	22.65	24.087		
4,900.0	4,854.4	4,863.8	4,854.4	15.7	11.1	-164.21	63.8	-159.6	559.8	536.7	23.10	24.240		
5,000.0	4,953.3	4,962.7	4,953.3	16.1	11.3	-164.61	63.8	-159.6	574.2	550.6	23.54	24.387		

CC - Min centre to center distance or convergent point, SF - min separation factor, ES - min ellipse separation

<b>Company:</b>	Synergy Resources	<b>Local Co-ordinate Reference:</b>	Well SRC Wiedeman 21-5-3CHZ
<b>Project:</b>	Sec.5-T5N-R66W	<b>TVD Reference:</b>	WELL @ 4796.0ft (RKB - 13')
<b>Reference Site:</b>	SRC Wiedeman Pad Sec.5-T5N-R66W	<b>MD Reference:</b>	WELL @ 4796.0ft (RKB - 13')
<b>Site Error:</b>	0.0ft	<b>North Reference:</b>	True
<b>Reference Well:</b>	SRC Wiedeman 21-5-3CHZ	<b>Survey Calculation Method:</b>	Minimum Curvature
<b>Well Error:</b>	0.0ft	<b>Output errors are at</b>	2.00 sigma
<b>Reference Wellbore</b>	Wellbore #1	<b>Database:</b>	Landmark
<b>Reference Design:</b>	Plan #2 (9-24-14)	<b>Offset TVD Reference:</b>	Offset Datum

Offset Design												Offset Site Error:	0.0 ft
Survey Program: 0-MWD												Offset Well Error:	0.0 ft
Reference		Offset		Semi Major Axis			Distance						
Measured Depth (ft)	Vertical Depth (ft)	Measured Depth (ft)	Vertical Depth (ft)	Reference (ft)	Offset (ft)	Highside Toolface (°)	Offset Wellbore Centre +N/-S (ft)	+E/-W (ft)	Between Centres (ft)	Between Ellipses (ft)	Minimum Separation (ft)	Separation Factor	Warning
5,100.0	5,052.2	5,061.6	5,052.2	16.4	11.5	-165.00	63.8	-159.6	588.5	564.5	23.99	24.529	
5,200.0	5,151.1	5,160.5	5,151.1	16.8	11.8	-165.36	63.8	-159.6	602.9	578.4	24.44	24.666	
5,300.0	5,250.0	5,259.3	5,250.0	17.1	12.0	-165.71	63.8	-159.6	617.2	592.3	24.89	24.798	
5,400.0	5,348.9	5,358.2	5,348.9	17.5	12.2	-166.04	63.8	-159.6	631.6	606.3	25.34	24.925	
5,500.0	5,447.7	5,457.1	5,447.7	17.8	12.4	-166.36	63.8	-159.6	646.1	620.3	25.79	25.048	
5,600.0	5,546.6	5,556.0	5,546.6	18.2	12.6	-166.66	63.8	-159.6	660.5	634.3	26.25	25.166	
5,628.4	5,574.7	5,584.1	5,574.7	18.3	12.7	-166.75	63.8	-159.6	664.6	638.2	26.37	25.199	
5,700.0	5,645.7	5,655.0	5,645.7	18.5	12.8	-166.98	63.8	-159.6	674.1	647.4	26.70	25.243	
5,800.0	5,745.1	5,754.5	5,745.1	18.7	13.0	-167.23	63.8	-159.6	684.5	657.4	27.11	25.246	
5,900.0	5,844.8	5,854.2	5,844.8	18.9	13.2	-167.39	63.8	-159.6	691.5	664.0	27.49	25.152	
6,000.0	5,944.8	5,954.1	5,944.8	19.1	13.5	-167.47	63.8	-159.6	695.1	667.2	27.84	24.966	
6,055.3	6,000.0	6,009.4	6,000.0	19.2	13.6	-174.35	63.8	-159.6	695.6	663.4	32.13	21.648	
6,100.0	6,044.7	6,054.1	6,044.7	19.2	13.7	-174.35	63.8	-159.6	695.6	663.3	32.29	21.540	
6,200.0	6,144.7	6,154.1	6,144.7	19.4	13.9	-174.35	63.8	-159.6	695.6	662.9	32.66	21.295	
6,300.0	6,244.7	6,254.1	6,244.7	19.5	14.1	-174.35	63.8	-159.6	695.6	662.5	33.04	21.054	
6,392.1	6,336.8	6,346.2	6,336.8	19.7	14.3	-174.35	63.8	-159.6	695.6	662.2	33.38	20.836	
6,400.0	6,344.7	6,354.1	6,344.7	19.7	14.3	96.06	63.8	-159.6	695.6	666.1	29.46	23.611	
6,450.0	6,394.7	6,404.1	6,394.7	19.8	14.4	96.23	63.8	-159.6	695.8	666.2	29.67	23.450	
6,500.0	6,444.3	6,453.7	6,444.3	19.8	14.5	96.65	63.8	-159.6	696.5	666.6	29.89	23.305	
6,550.0	6,493.5	6,502.9	6,493.5	19.9	14.6	97.30	63.8	-159.6	697.6	667.5	30.10	23.178	
6,600.0	6,541.8	6,551.1	6,541.8	19.9	14.8	98.20	63.8	-158.4	699.2	668.9	30.31	23.066	
6,650.0	6,589.2	6,614.5	6,604.8	20.0	14.8	99.11	63.8	-152.8	701.0	670.5	30.50	22.979	
6,700.0	6,635.3	6,673.1	6,662.4	20.0	14.9	99.98	63.9	-142.4	702.8	672.1	30.68	22.909	
6,750.0	6,680.0	6,732.8	6,720.2	20.1	15.0	100.81	64.0	-127.0	704.7	673.8	30.84	22.850	
6,800.0	6,723.0	6,793.8	6,777.5	20.2	15.1	101.58	64.2	-106.4	706.5	675.5	31.00	22.791	
6,850.0	6,764.2	6,856.0	6,834.0	20.2	15.2	102.29	64.4	-80.5	708.3	677.1	31.18	22.717	
6,900.0	6,803.2	6,919.2	6,888.9	20.3	15.3	102.93	64.6	-49.1	710.0	678.6	31.40	22.610	
6,950.0	6,840.0	6,983.5	6,941.6	20.4	15.4	103.49	64.9	-12.5	711.6	679.9	31.70	22.447	
7,000.0	6,874.3	7,048.6	6,991.5	20.5	15.7	103.98	65.2	29.4	713.0	680.9	32.10	22.208	
7,050.0	6,906.0	7,114.6	7,038.0	20.6	16.0	104.37	65.5	76.2	714.1	681.5	32.67	21.862	
7,100.0	6,935.0	7,181.2	7,080.3	20.8	16.4	104.67	65.9	127.6	715.0	681.6	33.41	21.403	
7,150.0	6,961.0	7,248.2	7,117.9	21.0	17.0	104.87	66.3	183.1	715.6	681.3	34.36	20.828	
7,200.0	6,984.0	7,315.6	7,150.2	21.3	17.7	104.98	66.8	242.1	715.9	680.4	35.56	20.131	
7,250.0	7,003.8	7,383.0	7,177.0	21.6	18.6	104.98	67.2	304.0	715.9	678.9	37.01	19.344	
7,300.0	7,020.4	7,450.3	7,197.7	22.1	19.6	104.87	67.7	368.0	715.6	676.9	38.69	18.498	
7,350.0	7,033.6	7,517.4	7,212.3	22.7	20.7	104.67	68.2	433.4	715.0	674.4	40.60	17.612	
7,400.0	7,043.5	7,583.9	7,220.7	23.3	21.9	104.37	68.7	499.4	714.1	671.4	42.68	16.730	
7,450.0	7,049.9	7,647.8	7,223.0	24.1	23.1	104.00	69.1	563.2	712.9	668.0	44.87	15.887	
7,500.0	7,052.8	7,697.7	7,223.0	24.9	24.1	103.82	69.5	613.1	712.2	665.3	46.88	15.192	
7,517.1	7,053.0	7,714.7	7,223.0	25.2	24.5	103.81	69.6	630.2	712.1	664.6	47.59	14.965	
7,600.0	7,053.0	7,797.7	7,223.0	26.7	26.2	103.81	70.2	713.1	712.1	661.2	50.94	13.980	
7,700.0	7,053.0	7,897.7	7,223.0	28.8	28.5	103.81	71.0	813.1	712.1	656.9	55.21	12.897	
7,800.0	7,053.0	7,997.7	7,223.0	30.9	30.8	103.81	71.7	913.1	712.1	652.4	59.68	11.931	
7,900.0	7,053.0	8,097.7	7,223.0	33.2	33.2	103.81	72.4	1,013.1	712.1	647.8	64.31	11.073	
8,000.0	7,053.0	8,197.7	7,223.0	35.5	35.7	103.81	73.2	1,113.1	712.1	643.0	69.06	10.311	
8,100.0	7,053.0	8,297.7	7,223.0	37.9	38.2	103.81	73.9	1,213.1	712.0	638.1	73.90	9.635	
8,200.0	7,053.0	8,397.7	7,223.0	40.4	40.8	103.81	74.7	1,313.1	712.0	633.2	78.83	9.032	
8,300.0	7,053.0	8,497.7	7,223.0	42.9	43.3	103.81	75.4	1,413.1	712.0	628.2	83.82	8.494	
8,400.0	7,053.0	8,597.7	7,223.0	45.4	46.0	103.81	76.1	1,513.1	712.0	623.1	88.87	8.011	
8,500.0	7,053.0	8,697.7	7,223.0	48.0	48.6	103.81	76.9	1,613.1	712.0	618.0	93.97	7.577	
8,600.0	7,053.0	8,797.7	7,223.0	50.6	51.2	103.81	77.6	1,713.1	712.0	612.8	99.11	7.184	
8,700.0	7,053.0	8,897.7	7,223.0	53.2	53.9	103.81	78.3	1,813.1	711.9	607.7	104.28	6.827	

CC - Min centre to center distance or convergent point, SF - min separation factor, ES - min ellipse separation



<b>Company:</b>	Synergy Resources	<b>Local Co-ordinate Reference:</b>	Well SRC Wiedeman 21-5-3CHZ
<b>Project:</b>	Sec.5-T5N-R66W	<b>TVD Reference:</b>	WELL @ 4796.0ft (RKB - 13')
<b>Reference Site:</b>	SRC Wiedeman Pad Sec.5-T5N-R66W	<b>MD Reference:</b>	WELL @ 4796.0ft (RKB - 13')
<b>Site Error:</b>	0.0ft	<b>North Reference:</b>	True
<b>Reference Well:</b>	SRC Wiedeman 21-5-3CHZ	<b>Survey Calculation Method:</b>	Minimum Curvature
<b>Well Error:</b>	0.0ft	<b>Output errors are at</b>	2.00 sigma
<b>Reference Wellbore</b>	Wellbore #1	<b>Database:</b>	Landmark
<b>Reference Design:</b>	Plan #2 (9-24-14)	<b>Offset TVD Reference:</b>	Offset Datum

Offset Design												Offset Site Error:	0.0 ft
Survey Program: 0-MWD												Offset Well Error:	0.0 ft
Reference		Offset		Semi Major Axis			Distance						
Measured Depth (ft)	Vertical Depth (ft)	Measured Depth (ft)	Vertical Depth (ft)	Reference (ft)	Offset (ft)	Highside Toolface (°)	Offset Wellbore Centre +N/-S (ft)	+E/-W (ft)	Between Centres (ft)	Between Ellipses (ft)	Minimum Separation (ft)	Separation Factor	Warning
8,800.0	7,053.0	8,997.7	7,223.0	55.9	56.6	103.82	79.1	1,913.1	711.9	602.4	109.47	6.503	
8,900.0	7,053.0	9,097.7	7,223.0	58.5	59.3	103.82	79.8	2,013.1	711.9	597.2	114.70	6.207	
9,000.0	7,053.0	9,197.7	7,223.0	61.2	62.0	103.82	80.6	2,113.1	711.9	591.9	119.94	5.935	
9,100.0	7,053.0	9,297.7	7,223.0	63.9	64.7	103.82	81.3	2,213.1	711.9	586.7	125.20	5.686	
9,200.0	7,053.0	9,397.7	7,223.0	66.6	67.4	103.82	82.0	2,313.1	711.9	581.4	130.48	5.455	
9,300.0	7,053.0	9,497.7	7,223.0	69.3	70.1	103.82	82.8	2,413.1	711.8	576.1	135.78	5.243	
9,400.0	7,053.0	9,597.7	7,223.0	72.0	72.9	103.82	83.5	2,513.1	711.8	570.7	141.09	5.045	
9,500.0	7,053.0	9,697.7	7,223.0	74.7	75.6	103.82	84.2	2,613.1	711.8	565.4	146.41	4.862	
9,600.0	7,053.0	9,797.7	7,223.0	77.4	78.3	103.82	85.0	2,713.1	711.8	560.0	151.74	4.691	
9,700.0	7,053.0	9,897.7	7,223.0	80.1	81.1	103.82	85.7	2,813.1	711.8	554.7	157.08	4.531	
9,800.0	7,053.0	9,997.7	7,223.0	82.9	83.8	103.82	86.5	2,913.1	711.8	549.3	162.42	4.382	
9,900.0	7,053.0	10,097.7	7,223.0	85.6	86.6	103.82	87.2	3,013.1	711.7	544.0	167.78	4.242	
10,000.0	7,053.0	10,197.7	7,223.0	88.3	89.3	103.82	87.9	3,113.1	711.7	538.6	173.14	4.111	
10,100.0	7,053.0	10,297.7	7,223.0	91.1	92.1	103.82	88.7	3,213.1	711.7	533.2	178.51	3.987	
10,200.0	7,053.0	10,397.7	7,223.0	93.8	94.9	103.82	89.4	3,313.0	711.7	527.8	183.88	3.870	
10,300.0	7,053.0	10,497.7	7,223.0	96.6	97.6	103.82	90.1	3,413.0	711.7	522.4	189.26	3.760	
10,400.0	7,053.0	10,597.7	7,223.0	99.3	100.4	103.82	90.9	3,513.0	711.7	517.0	194.65	3.656	
10,500.0	7,053.0	10,697.7	7,223.0	102.1	103.2	103.82	91.6	3,613.0	711.6	511.6	200.04	3.558	
10,600.0	7,053.0	10,797.7	7,223.0	104.9	105.9	103.82	92.4	3,713.0	711.6	506.2	205.43	3.464	
10,700.0	7,053.0	10,897.7	7,223.0	107.6	108.7	103.82	93.1	3,813.0	711.6	500.8	210.82	3.375	
10,800.0	7,053.0	10,997.7	7,223.0	110.4	111.5	103.82	93.8	3,913.0	711.6	495.4	216.22	3.291	
10,900.0	7,053.0	11,097.7	7,223.0	113.2	114.3	103.82	94.6	4,013.0	711.6	489.9	221.63	3.211	
11,000.0	7,053.0	11,197.7	7,223.0	115.9	117.1	103.82	95.3	4,113.0	711.6	484.5	227.03	3.134	
11,100.0	7,053.0	11,297.7	7,223.0	118.7	119.8	103.82	96.0	4,213.0	711.5	479.1	232.44	3.061	
11,200.0	7,053.0	11,397.7	7,223.0	121.5	122.6	103.82	96.8	4,313.0	711.5	473.7	237.85	2.991	
11,300.0	7,053.0	11,497.7	7,223.0	124.3	125.4	103.82	97.5	4,413.0	711.5	468.2	243.27	2.925	
11,400.0	7,053.0	11,597.7	7,223.0	127.0	128.2	103.82	98.3	4,513.0	711.5	462.8	248.68	2.861	
11,500.0	7,053.0	11,697.7	7,223.0	129.8	131.0	103.82	99.0	4,613.0	711.5	457.4	254.10	2.800	
11,600.0	7,053.0	11,797.7	7,223.0	132.6	133.8	103.82	99.7	4,713.0	711.5	451.9	259.52	2.741	
11,700.0	7,053.0	11,897.7	7,223.0	135.4	136.5	103.82	100.5	4,813.0	711.4	446.5	264.94	2.685	
11,800.0	7,053.0	11,997.7	7,223.0	138.1	139.3	103.83	101.2	4,913.0	711.4	441.1	270.37	2.631	
11,900.0	7,053.0	12,097.7	7,223.0	140.9	142.1	103.83	102.0	5,013.0	711.4	435.6	275.79	2.579	
12,000.0	7,053.0	12,197.7	7,223.0	143.7	144.9	103.83	102.7	5,113.0	711.4	430.2	281.22	2.530	
12,100.0	7,053.0	12,297.7	7,223.0	146.5	147.7	103.83	103.4	5,213.0	711.4	424.7	286.65	2.482	
12,200.0	7,053.0	12,397.7	7,223.0	149.3	150.5	103.83	104.2	5,313.0	711.3	419.3	292.08	2.435	
12,300.0	7,053.0	12,497.7	7,223.0	152.1	153.3	103.83	104.9	5,413.0	711.3	413.8	297.51	2.391	
12,400.0	7,053.0	12,597.7	7,223.0	154.9	156.1	103.83	105.6	5,513.0	711.3	408.4	302.94	2.348	
12,500.0	7,053.0	12,697.7	7,223.0	157.6	158.9	103.83	106.4	5,613.0	711.3	402.9	308.37	2.307	
12,600.0	7,053.0	12,797.7	7,223.0	160.4	161.6	103.83	107.1	5,713.0	711.3	397.5	313.81	2.267	
12,700.0	7,053.0	12,897.7	7,223.0	163.2	164.4	103.83	107.9	5,813.0	711.3	392.0	319.24	2.228	
12,800.0	7,053.0	12,997.7	7,223.0	166.0	167.2	103.83	108.6	5,913.0	711.2	386.6	324.68	2.191	
12,900.0	7,053.0	13,097.7	7,223.0	168.8	170.0	103.83	109.3	6,013.0	711.2	381.1	330.12	2.154	
13,000.0	7,053.0	13,197.7	7,223.0	171.6	172.8	103.83	110.1	6,113.0	711.2	375.7	335.55	2.120	
13,100.0	7,053.0	13,297.7	7,223.0	174.4	175.6	103.83	110.8	6,213.0	711.2	370.2	340.99	2.086	
13,200.0	7,053.0	13,397.7	7,223.0	177.2	178.4	103.83	111.5	6,313.0	711.2	364.7	346.43	2.053	
13,300.0	7,053.0	13,497.7	7,223.0	180.0	181.2	103.83	112.3	6,413.0	711.2	359.3	351.87	2.021	
13,400.0	7,053.0	13,597.7	7,223.0	182.8	184.0	103.83	113.0	6,513.0	711.1	353.8	357.31	1.990	
13,500.0	7,053.0	13,697.7	7,223.0	185.5	186.8	103.83	113.8	6,613.0	711.1	348.4	362.76	1.960	
13,600.0	7,053.0	13,797.7	7,223.0	188.3	189.6	103.83	114.5	6,713.0	711.1	342.9	368.20	1.931	
13,700.0	7,053.0	13,897.7	7,223.0	191.1	192.4	103.83	115.2	6,813.0	711.1	337.5	373.64	1.903	
13,800.0	7,053.0	13,997.7	7,223.0	193.9	195.2	103.83	116.0	6,913.0	711.1	332.0	379.09	1.876	
13,900.0	7,053.0	14,097.7	7,223.0	196.7	198.0	103.83	116.7	7,012.9	711.1	326.5	384.53	1.849	

CC - Min centre to center distance or convergent point, SF - min separation factor, ES - min ellipse separation

<b>Company:</b>	Synergy Resources	<b>Local Co-ordinate Reference:</b>	Well SRC Wiedeman 21-5-3CHZ
<b>Project:</b>	Sec.5-T5N-R66W	<b>TVD Reference:</b>	WELL @ 4796.0ft (RKB - 13')
<b>Reference Site:</b>	SRC Wiedeman Pad Sec.5-T5N-R66W	<b>MD Reference:</b>	WELL @ 4796.0ft (RKB - 13')
<b>Site Error:</b>	0.0ft	<b>North Reference:</b>	True
<b>Reference Well:</b>	SRC Wiedeman 21-5-3CHZ	<b>Survey Calculation Method:</b>	Minimum Curvature
<b>Well Error:</b>	0.0ft	<b>Output errors are at</b>	2.00 sigma
<b>Reference Wellbore</b>	Wellbore #1	<b>Database:</b>	Landmark
<b>Reference Design:</b>	Plan #2 (9-24-14)	<b>Offset TVD Reference:</b>	Offset Datum

Offset Design SRC Wiedeman Pad Sec.5-T5N-R66W - SRC Wiedeman A-5-3NBHZ - Wellbore #1 - Plan #3 (9-24-14)													Offset Site Error:	0.0 ft
Survey Program: 0-MWD													Offset Well Error:	0.0 ft
Reference		Offset		Semi Major Axis			Distance							Warning
Measured Depth (ft)	Vertical Depth (ft)	Measured Depth (ft)	Vertical Depth (ft)	Reference (ft)	Offset (ft)	Highside Toolface (°)	Offset Wellbore Centre +N/-S (ft)	+E/-W (ft)	Between Centres (ft)	Between Ellipses (ft)	Minimum Separation (ft)	Separation Factor		
14,000.0	7,053.0	14,197.7	7,223.0	199.5	200.8	103.83	117.4	7,112.9	711.0	321.1	389.98	1.823		
14,100.0	7,053.0	14,297.7	7,223.0	202.3	203.6	103.83	118.2	7,212.9	711.0	315.6	395.42	1.798		
14,200.0	7,053.0	14,397.7	7,223.0	205.1	206.4	103.83	118.9	7,312.9	711.0	310.1	400.87	1.774		
14,300.0	7,053.0	14,497.7	7,223.0	207.9	209.2	103.83	119.7	7,412.9	711.0	304.7	406.32	1.750		
14,400.0	7,053.0	14,597.7	7,223.0	210.7	212.0	103.83	120.4	7,512.9	711.0	299.2	411.76	1.727		
14,500.0	7,053.0	14,697.7	7,223.0	213.5	214.8	103.83	121.1	7,612.9	711.0	293.8	417.21	1.704		
14,600.0	7,053.0	14,797.7	7,223.0	216.3	217.6	103.83	121.9	7,712.9	710.9	288.3	422.66	1.682		
14,700.0	7,053.0	14,897.7	7,223.0	219.1	220.4	103.83	122.6	7,812.9	710.9	282.8	428.11	1.661		
14,800.0	7,053.0	14,997.7	7,223.0	221.9	223.2	103.84	123.3	7,912.9	710.9	277.4	433.56	1.640		
14,900.0	7,053.0	15,097.7	7,223.0	224.7	226.0	103.84	124.1	8,012.9	710.9	271.9	439.00	1.619		
15,000.0	7,053.0	15,197.7	7,223.0	227.5	228.8	103.84	124.8	8,112.9	710.9	266.4	444.45	1.599		
15,100.0	7,053.0	15,297.7	7,223.0	230.3	231.6	103.84	125.6	8,212.9	710.9	261.0	449.90	1.580		
15,200.0	7,053.0	15,397.7	7,223.0	233.1	234.4	103.84	126.3	8,312.9	710.8	255.5	455.35	1.561		
15,300.0	7,053.0	15,497.7	7,223.0	235.9	237.2	103.84	127.0	8,412.9	710.8	250.0	460.80	1.543		
15,400.0	7,053.0	15,597.7	7,223.0	238.7	240.0	103.84	127.8	8,512.9	710.8	244.6	466.26	1.525		
15,500.0	7,053.0	15,697.7	7,223.0	241.5	242.8	103.84	128.5	8,612.9	710.8	239.1	471.71	1.507		
15,600.0	7,053.0	15,797.7	7,223.0	244.3	245.6	103.84	129.2	8,712.9	710.8	233.6	477.16	1.490	Level 3	
15,700.0	7,053.0	15,897.7	7,223.0	247.1	248.4	103.84	130.0	8,812.9	710.8	228.2	482.61	1.473	Level 3	
15,800.0	7,053.0	15,997.7	7,223.0	249.9	251.2	103.84	130.7	8,912.9	710.7	222.7	488.06	1.456	Level 3	
15,900.0	7,053.0	16,097.7	7,223.0	252.7	254.0	103.84	131.5	9,012.9	710.7	217.2	493.51	1.440	Level 3	
16,000.0	7,053.0	16,197.7	7,223.0	255.5	256.8	103.84	132.2	9,112.9	710.7	211.7	498.97	1.424	Level 3	
16,100.0	7,053.0	16,297.7	7,223.0	258.3	259.6	103.84	132.9	9,212.9	710.7	206.3	504.42	1.409	Level 3	
16,200.0	7,053.0	16,397.7	7,223.0	261.1	262.4	103.84	133.7	9,312.9	710.7	200.8	509.87	1.394	Level 3	
16,300.0	7,053.0	16,497.7	7,223.0	263.9	265.2	103.84	134.4	9,412.9	710.7	195.3	515.33	1.379	Level 3	
16,400.0	7,053.0	16,597.7	7,223.0	266.7	268.0	103.84	135.1	9,512.9	710.6	189.9	520.78	1.365	Level 3	
16,500.0	7,053.0	16,697.7	7,223.0	269.5	270.8	103.84	135.9	9,612.9	710.6	184.4	526.23	1.350	Level 3	
16,600.0	7,053.0	16,797.7	7,223.0	272.3	273.6	103.84	136.6	9,712.9	710.6	178.9	531.69	1.337	Level 3	
16,700.0	7,053.0	16,897.7	7,223.0	275.1	276.4	103.84	137.4	9,812.9	710.6	173.5	537.14	1.323	Level 3	
16,800.0	7,053.0	16,997.7	7,223.0	277.9	279.2	103.84	138.1	9,912.9	710.6	168.0	542.60	1.310	Level 3	
16,805.7	7,053.0	17,003.3	7,223.0	278.0	279.4	103.84	138.1	9,918.5	710.6	167.7	542.91	1.309	Level 3	
16,890.1	7,053.0	17,020.6	7,223.0	280.4	279.8	103.84	138.3	9,935.8	713.7	168.1	545.68	1.308	Level 3, SF	



**Company:** Synergy Resources  
**Project:** Sec.5-T5N-R66W  
**Reference Site:** SRC Wiedeman Pad Sec.5-T5N-R66W  
**Site Error:** 0.0ft  
**Reference Well:** SRC Wiedeman 21-5-3CHZ  
**Well Error:** 0.0ft  
**Reference Wellbore:** Wellbore #1  
**Reference Design:** Plan #2 (9-24-14)

**Local Co-ordinate Reference:** Well SRC Wiedeman 21-5-3CHZ  
**TVD Reference:** WELL @ 4796.0ft (RKB - 13')  
**MD Reference:** WELL @ 4796.0ft (RKB - 13')  
**North Reference:** True  
**Survey Calculation Method:** Minimum Curvature  
**Output errors are at** 2.00 sigma  
**Database:** Landmark  
**Offset TVD Reference:** Offset Datum

Reference Depths are relative to WELL @ 4796.0ft (RKB - 13')

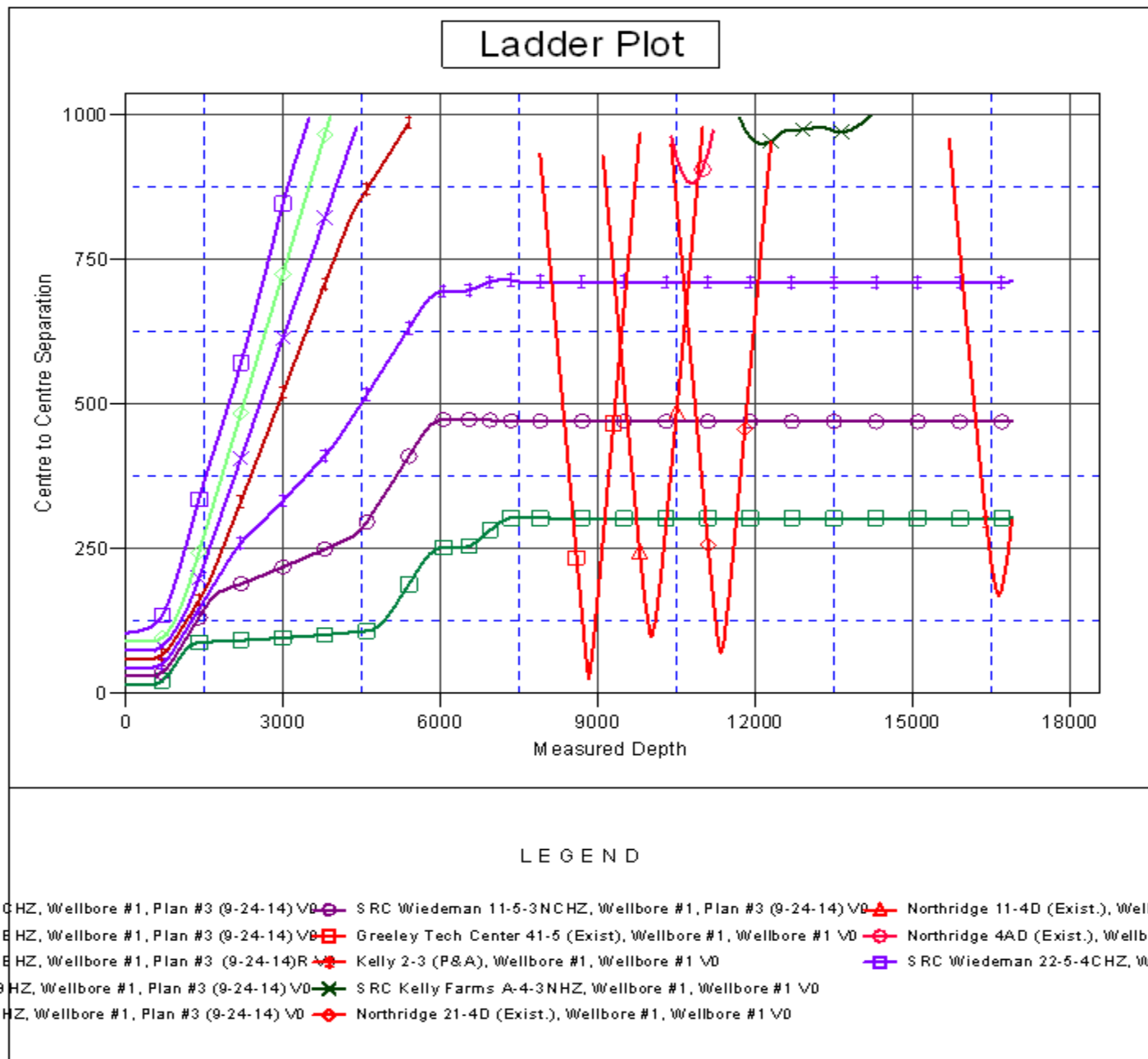
Offset Depths are relative to Offset Datum

Central Meridian is -105.500000 °

Coordinates are relative to: SRC Wiedeman 21-5-3CHZ

Coordinate System is US State Plane 1983, Colorado Northern Zone

Grid Convergence at Surface is: 0.45°



<b>Company:</b>	Synergy Resources	<b>Local Co-ordinate Reference:</b>	Well SRC Wiedeman 21-5-3CHZ
<b>Project:</b>	Sec.5-T5N-R66W	<b>TVD Reference:</b>	WELL @ 4796.0ft (RKB - 13')
<b>Reference Site:</b>	SRC Wiedeman Pad Sec.5-T5N-R66W	<b>MD Reference:</b>	WELL @ 4796.0ft (RKB - 13')
<b>Site Error:</b>	0.0ft	<b>North Reference:</b>	True
<b>Reference Well:</b>	SRC Wiedeman 21-5-3CHZ	<b>Survey Calculation Method:</b>	Minimum Curvature
<b>Well Error:</b>	0.0ft	<b>Output errors are at</b>	2.00 sigma
<b>Reference Wellbore</b>	Wellbore #1	<b>Database:</b>	Landmark
<b>Reference Design:</b>	Plan #2 (9-24-14)	<b>Offset TVD Reference:</b>	Offset Datum

Reference Depths are relative to WELL @ 4796.0ft (RKB - 13')

Offset Depths are relative to Offset Datum

Central Meridian is -105.500000 °

Coordinates are relative to: SRC Wiedeman 21-5-3CHZ

Coordinate System is US State Plane 1983, Colorado Northern Zone

Grid Convergence at Surface is: 0.45°

