

Synergy Resources

Well Name: **SRC Wiedeman 22-5-4NBHZ**

Surface Location: SRC Wiedeman Pad Sec.5-T5N-R66W
North American Datum 1983 , US State Plane 1983 , Colorado Northern Zone

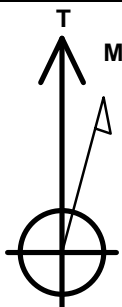
Ground Elevation: 4783.0

+N/-S	+E/-W	Northing	Easting	Latitude	Longitude	Slot
0.0	0.0	1401402.53	3194376.65	40.433151	-104.801736	

RKB - 13' WELL @ 4796.0ft (RKB - 13')

WELLBORE TARGET DETAILS

Name	TVD	+N/-S	+E/-W	Shape
SHL 1467'FNL & 2438'FEL, Sec.5				
WP #1 (22-5-4NBHZ)	7070.0	-671.6	1468.4	Point
WP #2 (22-5-4NBHZ)	7070.0	-656.4	2468.3	Point
BHL 2160'FNL & 2195'FWL, Sec.4	7080.0	-624.1	4598.5	Point
WP #3 (22-5-4NBHZ)	7080.0	-641.3	3468.1	Point



Azimuths to True North
Magnetic North: 8.45°

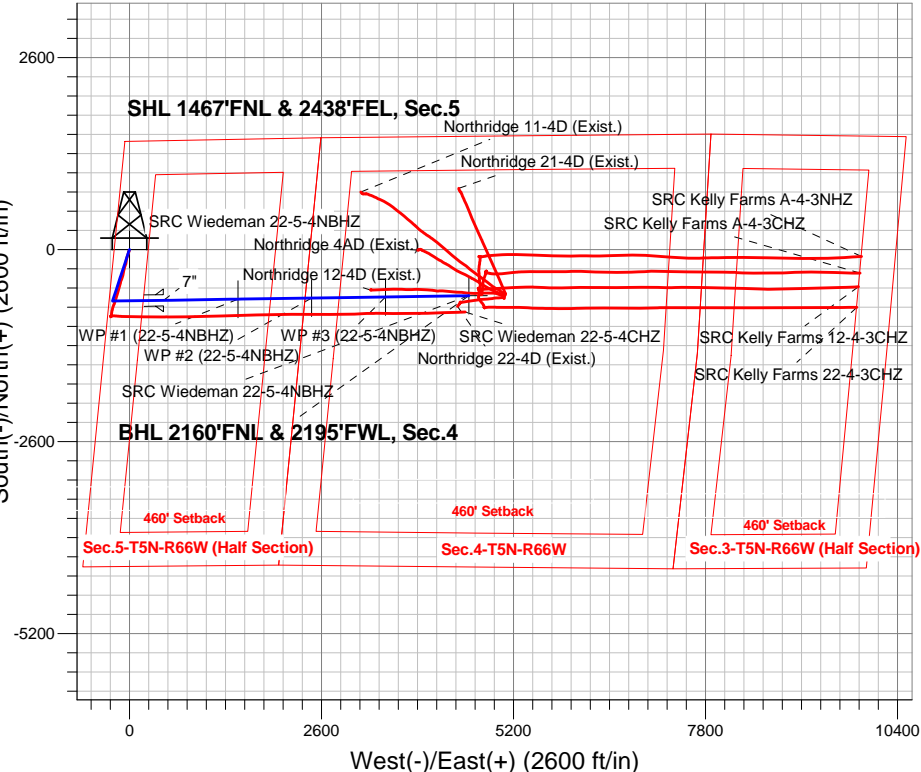
Magnetic Field
Strength: 52799.9snT
Dip Angle: 66.96°
Date: 9/24/2014
Model: IGRF2010

SRC Wiedeman Pad Sec.5-T5N-R66W
SRC Wiedeman 22-5-4NBHZ
Plan #3 (9-24-14)R
13:27, September 24 2014

ANNOTATIONS

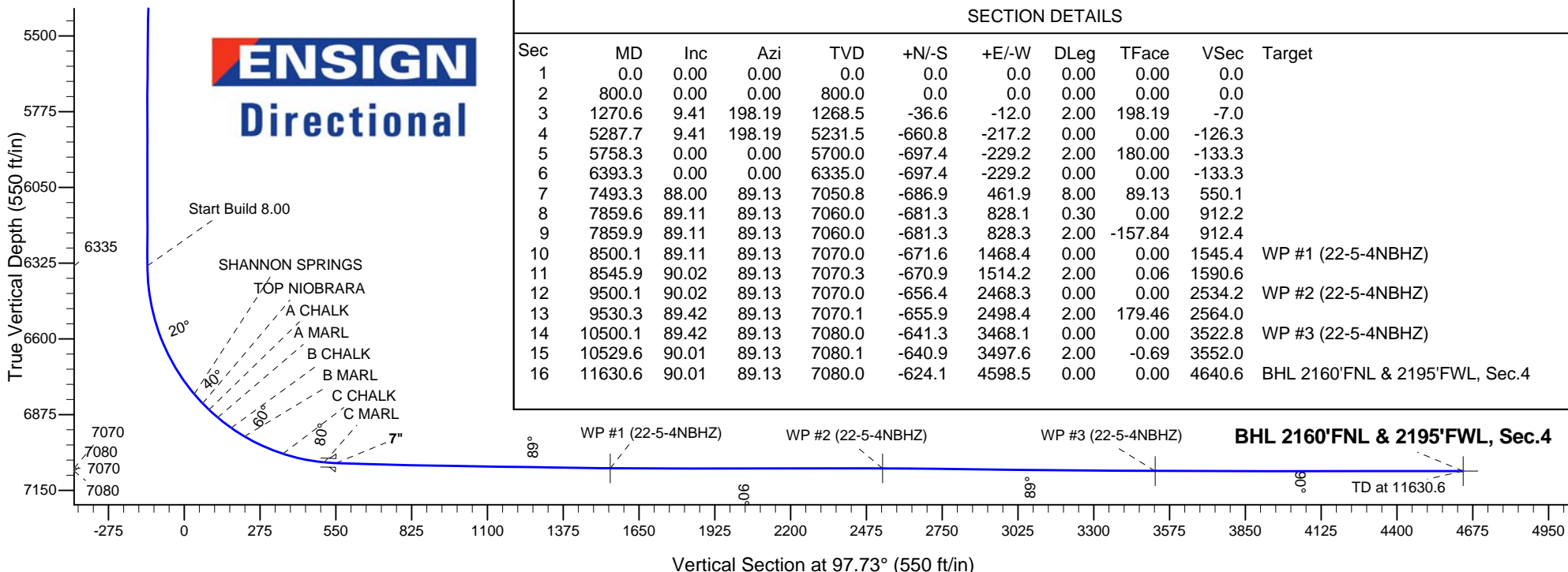
TVD	MD	Annotation
800.0	800.0	Start Build 2.00
6335.0	6393.3	Start Build 8.00
7070.0	8500.1	Start DLS 2.00 TFO 0.06
7070.0	9500.1	Start DLS 2.00 TFO 179.46
7080.0	10500.1	Start DLS 2.00 TFO -0.69
7080.0	11630.6	TD at 11630.6

South(-)/North(+) (2600 ft/in)



West(-)/East(+) (2600 ft/in)

ENSIGN
Directional



SECTION DETAILS

Sec	MD	Inc	Azi	TVD	+N/-S	+E/-W	DLeg	TFace	VSec	Target
1	0.0	0.00	0.00	0.0	0.0	0.0	0.00	0.00	0.0	
2	800.0	0.00	0.00	800.0	0.0	0.0	0.00	0.00	0.0	
3	1270.6	9.41	198.19	1268.5	-36.6	-12.0	2.00	198.19	-7.0	
4	5287.7	9.41	198.19	5231.5	-660.8	-217.2	0.00	0.00	-126.3	
5	5758.3	0.00	0.00	5700.0	-697.4	-229.2	2.00	180.00	-133.3	
6	6393.3	0.00	0.00	6335.0	-697.4	-229.2	0.00	0.00	-133.3	
7	7493.3	88.00	89.13	7050.8	-686.9	461.9	8.00	89.13	550.1	
8	7859.6	89.11	89.13	7060.0	-681.3	828.1	0.30	0.00	912.2	
9	7859.9	89.11	89.13	7060.0	-681.3	828.3	2.00	-157.84	912.4	
10	8500.1	89.11	89.13	7070.0	-671.6	1468.4	0.00	0.00	1545.4	WP #1 (22-5-4NBHZ)
11	8545.9	90.02	89.13	7070.3	-670.9	1514.2	2.00	0.06	1590.6	
12	9500.1	90.02	89.13	7070.0	-656.4	2468.3	0.00	0.00	2534.2	WP #2 (22-5-4NBHZ)
13	9530.3	89.42	89.13	7070.1	-655.9	2498.4	2.00	179.46	2564.0	
14	10500.1	89.42	89.13	7080.0	-641.3	3468.1	0.00	0.00	3522.8	WP #3 (22-5-4NBHZ)
15	10529.6	90.01	89.13	7080.1	-640.9	3497.6	2.00	-0.69	3552.0	
16	11630.6	90.01	89.13	7080.0	-624.1	4598.5	0.00	0.00	4640.6	BHL 2160'FNL & 2195'FWL, Sec.4

WP #1 (22-5-4NBHZ)

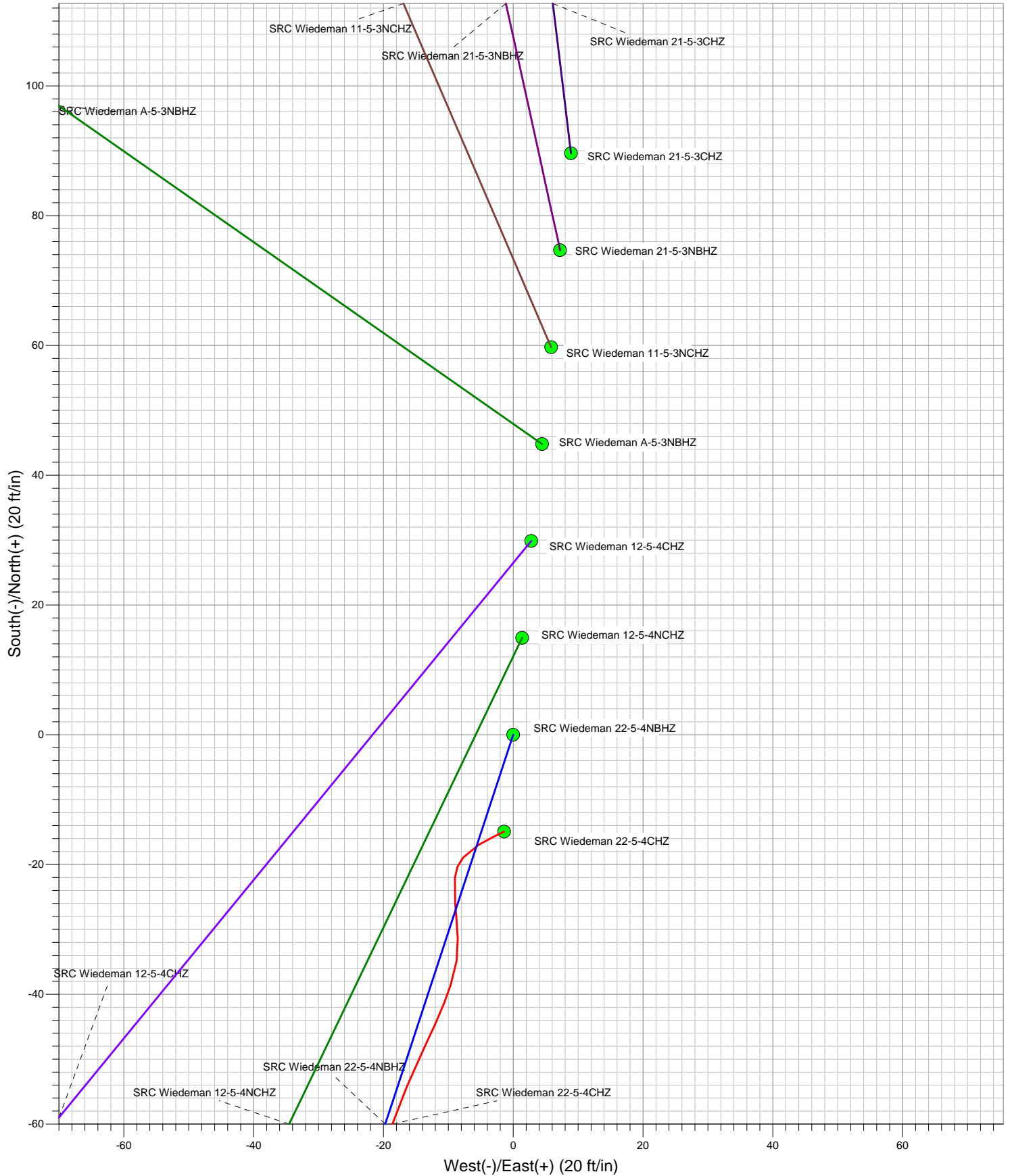
WP #2 (22-5-4NBHZ)

WP #3 (22-5-4NBHZ)

BHL 2160'FNL & 2195'FWL, Sec.4

TD at 11630.6

Vertical Section at 97.73° (550 ft/in)





Synergy Resources

Sec.5-T5N-R66W

SRC Wiedeman Pad Sec.5-T5N-R66W

SRC Wiedeman 22-5-4NBHZ

Wellbore #1

Plan: Plan #3 (9-24-14)R

Standard Planning Report

24 September, 2014

Plan Sections										
Measured Depth (ft)	Inclination (°)	Azimuth (°)	Vertical Depth (ft)	+N/-S (ft)	+E/-W (ft)	Dogleg Rate (°/100ft)	Build Rate (°/100ft)	Turn Rate (°/100ft)	TFO (°)	Target
0.0	0.00	0.00	0.0	0.0	0.0	0.00	0.00	0.00	0.00	
800.0	0.00	0.00	800.0	0.0	0.0	0.00	0.00	0.00	0.00	
1,270.6	9.41	198.19	1,268.5	-36.6	-12.0	2.00	2.00	0.00	198.19	
5,287.7	9.41	198.19	5,231.5	-660.8	-217.2	0.00	0.00	0.00	0.00	
5,758.3	0.00	0.00	5,700.0	-697.4	-229.2	2.00	-2.00	0.00	180.00	
6,393.3	0.00	0.00	6,335.0	-697.4	-229.2	0.00	0.00	0.00	0.00	
7,493.3	88.00	89.13	7,050.8	-686.9	461.9	8.00	8.00	0.00	89.13	
7,859.6	89.11	89.13	7,060.0	-681.3	828.1	0.30	0.30	0.00	0.00	
7,859.9	89.11	89.13	7,060.0	-681.3	828.3	2.00	-1.85	-0.75	-157.84	
8,500.1	89.11	89.13	7,070.0	-671.6	1,468.4	0.00	0.00	0.00	0.00	WP #1 (22-5-4NBH)
8,545.9	90.02	89.13	7,070.3	-670.9	1,514.2	2.00	2.00	0.00	0.06	
9,500.1	90.02	89.13	7,070.0	-656.4	2,468.3	0.00	0.00	0.00	0.00	WP #2 (22-5-4NBH)
9,530.3	89.42	89.13	7,070.1	-655.9	2,498.4	2.00	-2.00	0.02	179.46	
10,500.1	89.42	89.13	7,080.0	-641.3	3,468.1	0.00	0.00	0.00	0.00	WP #3 (22-5-4NBH)
10,529.6	90.01	89.13	7,080.1	-640.9	3,497.6	2.00	2.00	-0.02	-0.69	
11,630.6	90.01	89.13	7,080.0	-624.1	4,598.5	0.00	0.00	0.00	0.00	BHL 2160'FNL & 21

Database:	Landmark	Local Co-ordinate Reference:	Well SRC Wiedeman 22-5-4NBHZ
Company:	Synergy Resources	TVD Reference:	WELL @ 4796.0ft (RKB - 13')
Project:	Sec.5-T5N-R66W	MD Reference:	WELL @ 4796.0ft (RKB - 13')
Site:	SRC Wiedeman Pad Sec.5-T5N-R66W	North Reference:	True
Well:	SRC Wiedeman 22-5-4NBHZ	Survey Calculation Method:	Minimum Curvature
Wellbore:	Wellbore #1		
Design:	Plan #3 (9-24-14)R		

Planned Survey									
Measured Depth (ft)	Inclination (°)	Azimuth (°)	Vertical Depth (ft)	+N/-S (ft)	+E/-W (ft)	Vertical Section (ft)	Dogleg Rate (°/100ft)	Build Rate (°/100ft)	Turn Rate (°/100ft)
0.0	0.00	0.00	0.0	0.0	0.0	0.0	0.00	0.00	0.00
1.0	0.00	0.00	1.0	0.0	0.0	0.0	0.00	0.00	0.00
SHL 1467'FNL & 2438'FEL, Sec.5									
100.0	0.00	0.00	100.0	0.0	0.0	0.0	0.00	0.00	0.00
200.0	0.00	0.00	200.0	0.0	0.0	0.0	0.00	0.00	0.00
300.0	0.00	0.00	300.0	0.0	0.0	0.0	0.00	0.00	0.00
400.0	0.00	0.00	400.0	0.0	0.0	0.0	0.00	0.00	0.00
500.0	0.00	0.00	500.0	0.0	0.0	0.0	0.00	0.00	0.00
600.0	0.00	0.00	600.0	0.0	0.0	0.0	0.00	0.00	0.00
700.0	0.00	0.00	700.0	0.0	0.0	0.0	0.00	0.00	0.00
800.0	0.00	0.00	800.0	0.0	0.0	0.0	0.00	0.00	0.00
Start Build 2.00									
900.0	2.00	198.19	900.0	-1.7	-0.5	-0.3	2.00	2.00	0.00
1,000.0	4.00	198.19	999.8	-6.6	-2.2	-1.3	2.00	2.00	0.00
1,100.0	6.00	198.19	1,099.5	-14.9	-4.9	-2.9	2.00	2.00	0.00
1,200.0	8.00	198.19	1,198.7	-26.5	-8.7	-5.1	2.00	2.00	0.00
1,270.6	9.41	198.19	1,268.5	-36.6	-12.0	-7.0	2.00	2.00	0.00
1,300.0	9.41	198.19	1,297.5	-41.2	-13.5	-7.9	0.00	0.00	0.00
1,400.0	9.41	198.19	1,396.1	-56.7	-18.6	-10.8	0.00	0.00	0.00
1,500.0	9.41	198.19	1,494.8	-72.3	-23.8	-13.8	0.00	0.00	0.00
1,600.0	9.41	198.19	1,593.5	-87.8	-28.9	-16.8	0.00	0.00	0.00
1,700.0	9.41	198.19	1,692.1	-103.4	-34.0	-19.8	0.00	0.00	0.00
1,800.0	9.41	198.19	1,790.8	-118.9	-39.1	-22.7	0.00	0.00	0.00
1,900.0	9.41	198.19	1,889.4	-134.4	-44.2	-25.7	0.00	0.00	0.00
2,000.0	9.41	198.19	1,988.1	-150.0	-49.3	-28.7	0.00	0.00	0.00
2,100.0	9.41	198.19	2,086.7	-165.5	-54.4	-31.6	0.00	0.00	0.00
2,200.0	9.41	198.19	2,185.4	-181.0	-59.5	-34.6	0.00	0.00	0.00
2,300.0	9.41	198.19	2,284.0	-196.6	-64.6	-37.6	0.00	0.00	0.00
2,400.0	9.41	198.19	2,382.7	-212.1	-69.7	-40.5	0.00	0.00	0.00
2,500.0	9.41	198.19	2,481.3	-227.6	-74.8	-43.5	0.00	0.00	0.00
2,600.0	9.41	198.19	2,580.0	-243.2	-79.9	-46.5	0.00	0.00	0.00
2,700.0	9.41	198.19	2,678.6	-258.7	-85.0	-49.5	0.00	0.00	0.00
2,800.0	9.41	198.19	2,777.3	-274.3	-90.1	-52.4	0.00	0.00	0.00
2,900.0	9.41	198.19	2,875.9	-289.8	-95.2	-55.4	0.00	0.00	0.00
3,000.0	9.41	198.19	2,974.6	-305.3	-100.3	-58.4	0.00	0.00	0.00
3,100.0	9.41	198.19	3,073.3	-320.9	-105.5	-61.3	0.00	0.00	0.00
3,200.0	9.41	198.19	3,171.9	-336.4	-110.6	-64.3	0.00	0.00	0.00
3,300.0	9.41	198.19	3,270.6	-351.9	-115.7	-67.3	0.00	0.00	0.00
3,400.0	9.41	198.19	3,369.2	-367.5	-120.8	-70.3	0.00	0.00	0.00
3,500.0	9.41	198.19	3,467.9	-383.0	-125.9	-73.2	0.00	0.00	0.00
3,600.0	9.41	198.19	3,566.5	-398.5	-131.0	-76.2	0.00	0.00	0.00
3,700.0	9.41	198.19	3,665.2	-414.1	-136.1	-79.2	0.00	0.00	0.00
3,800.0	9.41	198.19	3,763.8	-429.6	-141.2	-82.1	0.00	0.00	0.00
3,900.0	9.41	198.19	3,862.5	-445.2	-146.3	-85.1	0.00	0.00	0.00
4,000.0	9.41	198.19	3,961.1	-460.7	-151.4	-88.1	0.00	0.00	0.00
4,100.0	9.41	198.19	4,059.8	-476.2	-156.5	-91.0	0.00	0.00	0.00
4,200.0	9.41	198.19	4,158.4	-491.8	-161.6	-94.0	0.00	0.00	0.00
4,300.0	9.41	198.19	4,257.1	-507.3	-166.7	-97.0	0.00	0.00	0.00
4,400.0	9.41	198.19	4,355.8	-522.8	-171.8	-100.0	0.00	0.00	0.00
4,500.0	9.41	198.19	4,454.4	-538.4	-176.9	-102.9	0.00	0.00	0.00
4,600.0	9.41	198.19	4,553.1	-553.9	-182.0	-105.9	0.00	0.00	0.00
4,700.0	9.41	198.19	4,651.7	-569.5	-187.1	-108.9	0.00	0.00	0.00
4,800.0	9.41	198.19	4,750.4	-585.0	-192.3	-111.8	0.00	0.00	0.00

Database:	Landmark	Local Co-ordinate Reference:	Well SRC Wiedeman 22-5-4NBHZ
Company:	Synergy Resources	TVD Reference:	WELL @ 4796.0ft (RKB - 13')
Project:	Sec.5-T5N-R66W	MD Reference:	WELL @ 4796.0ft (RKB - 13')
Site:	SRC Wiedeman Pad Sec.5-T5N-R66W	North Reference:	True
Well:	SRC Wiedeman 22-5-4NBHZ	Survey Calculation Method:	Minimum Curvature
Wellbore:	Wellbore #1		
Design:	Plan #3 (9-24-14)R		

Planned Survey									
Measured Depth (ft)	Inclination (°)	Azimuth (°)	Vertical Depth (ft)	+N/-S (ft)	+E/-W (ft)	Vertical Section (ft)	Dogleg Rate (°/100ft)	Build Rate (°/100ft)	Turn Rate (°/100ft)
4,900.0	9.41	198.19	4,849.0	-600.5	-197.4	-114.8	0.00	0.00	0.00
5,000.0	9.41	198.19	4,947.7	-616.1	-202.5	-117.8	0.00	0.00	0.00
5,100.0	9.41	198.19	5,046.3	-631.6	-207.6	-120.7	0.00	0.00	0.00
5,200.0	9.41	198.19	5,145.0	-647.1	-212.7	-123.7	0.00	0.00	0.00
5,287.7	9.41	198.19	5,231.5	-660.8	-217.2	-126.3	0.00	0.00	0.00
5,300.0	9.17	198.19	5,243.6	-662.6	-217.8	-126.7	2.00	-2.00	0.00
5,400.0	7.17	198.19	5,342.6	-676.1	-222.2	-129.3	2.00	-2.00	0.00
5,500.0	5.17	198.19	5,442.0	-686.3	-225.6	-131.2	2.00	-2.00	0.00
5,600.0	3.17	198.19	5,541.8	-693.2	-227.8	-132.5	2.00	-2.00	0.00
5,700.0	1.17	198.19	5,641.7	-696.8	-229.0	-133.2	2.00	-2.00	0.00
5,758.3	0.00	0.00	5,700.0	-697.4	-229.2	-133.3	2.00	-2.00	0.00
5,800.0	0.00	0.00	5,741.7	-697.4	-229.2	-133.3	0.00	0.00	0.00
5,900.0	0.00	0.00	5,841.7	-697.4	-229.2	-133.3	0.00	0.00	0.00
6,000.0	0.00	0.00	5,941.7	-697.4	-229.2	-133.3	0.00	0.00	0.00
6,100.0	0.00	0.00	6,041.7	-697.4	-229.2	-133.3	0.00	0.00	0.00
6,200.0	0.00	0.00	6,141.7	-697.4	-229.2	-133.3	0.00	0.00	0.00
6,300.0	0.00	0.00	6,241.7	-697.4	-229.2	-133.3	0.00	0.00	0.00
6,393.3	0.00	0.00	6,335.0	-697.4	-229.2	-133.3	0.00	0.00	0.00
Start Build 8.00									
6,400.0	0.54	89.13	6,341.7	-697.4	-229.2	-133.3	7.99	7.99	0.00
6,500.0	8.54	89.13	6,441.3	-697.3	-221.3	-125.5	8.00	8.00	0.00
6,600.0	16.54	89.13	6,538.8	-697.0	-199.6	-104.0	8.00	8.00	0.00
6,700.0	24.54	89.13	6,632.4	-696.4	-164.5	-69.4	8.00	8.00	0.00
6,800.0	32.53	89.13	6,720.2	-695.7	-116.8	-22.2	8.00	8.00	0.00
6,899.4	40.49	89.13	6,800.0	-694.8	-57.7	36.2	8.00	8.00	0.00
SHANNON SPRINGS									
6,900.0	40.53	89.13	6,800.5	-694.8	-57.3	36.6	8.00	8.00	0.00
6,945.4	44.17	89.13	6,834.0	-694.3	-26.8	66.8	8.00	8.00	0.00
TOP NIOBRARA									
6,978.2	46.79	89.13	6,857.0	-694.0	-3.4	90.0	8.00	8.00	0.00
A CHALK									
7,000.0	48.53	89.13	6,871.7	-693.7	12.7	105.9	8.00	8.00	0.00
7,020.4	50.17	89.13	6,885.0	-693.5	28.2	121.2	8.00	8.00	0.00
A MARL									
7,083.1	55.19	89.13	6,923.0	-692.7	78.1	170.5	8.00	8.00	0.00
B CHALK									
7,100.0	56.53	89.13	6,932.5	-692.5	92.0	184.3	8.00	8.00	0.00
7,140.8	59.80	89.13	6,954.0	-692.0	126.7	218.6	8.00	8.00	0.00
B MARL									
7,200.0	64.53	89.13	6,981.6	-691.2	179.0	270.3	8.00	8.00	0.00
7,296.1	72.22	89.13	7,017.0	-689.8	268.3	358.6	8.00	8.00	0.00
C CHALK									
7,300.0	72.53	89.13	7,018.2	-689.8	272.0	362.3	8.00	8.00	0.00
7,400.0	80.53	89.13	7,041.4	-688.3	369.2	458.4	8.00	8.00	0.00
7,450.6	84.58	89.13	7,048.0	-687.6	419.3	508.0	8.00	8.00	0.00
C MARL									
7,493.3	88.00	89.13	7,050.8	-686.9	461.9	550.1	8.00	8.00	0.00
7"									
7,500.0	88.02	89.13	7,051.0	-686.8	468.6	556.7	0.32	0.32	0.00
7,600.0	88.32	89.13	7,054.2	-685.3	568.5	655.5	0.30	0.30	0.00
7,700.0	88.63	89.13	7,056.8	-683.8	668.5	754.4	0.30	0.30	0.00
7,800.0	88.93	89.13	7,059.0	-682.2	768.5	853.2	0.30	0.30	0.00
7,859.6	89.11	89.13	7,060.0	-681.3	828.1	912.2	0.30	0.30	0.00

Database:	Landmark	Local Co-ordinate Reference:	Well SRC Wiedeman 22-5-4NBHZ
Company:	Synergy Resources	TVD Reference:	WELL @ 4796.0ft (RKB - 13')
Project:	Sec.5-T5N-R66W	MD Reference:	WELL @ 4796.0ft (RKB - 13')
Site:	SRC Wiedeman Pad Sec.5-T5N-R66W	North Reference:	True
Well:	SRC Wiedeman 22-5-4NBHZ	Survey Calculation Method:	Minimum Curvature
Wellbore:	Wellbore #1		
Design:	Plan #3 (9-24-14)R		

Planned Survey									
Measured Depth (ft)	Inclination (°)	Azimuth (°)	Vertical Depth (ft)	+N/-S (ft)	+E/-W (ft)	Vertical Section (ft)	Dogleg Rate (°/100ft)	Build Rate (°/100ft)	Turn Rate (°/100ft)
7,859.9	89.11	89.13	7,060.0	-681.3	828.3	912.4	2.00	-1.85	-0.75
7,900.0	89.11	89.13	7,060.6	-680.7	868.4	952.1	0.00	0.00	0.00
8,000.0	89.11	89.13	7,062.2	-679.2	968.4	1,051.0	0.00	0.00	0.00
8,100.0	89.11	89.13	7,063.8	-677.7	1,068.4	1,149.8	0.00	0.00	0.00
8,200.0	89.11	89.13	7,065.3	-676.2	1,168.4	1,248.7	0.00	0.00	0.00
8,300.0	89.11	89.13	7,066.9	-674.6	1,268.3	1,347.6	0.00	0.00	0.00
8,400.0	89.11	89.13	7,068.4	-673.1	1,368.3	1,446.4	0.00	0.00	0.00
8,500.0	89.11	89.13	7,070.0	-671.6	1,468.3	1,545.3	0.00	0.00	0.00
8,500.1	89.11	89.13	7,070.0	-671.6	1,468.4	1,545.4	0.00	0.00	0.00
Start DLS 2.00 TFO 0.06 - WP #1 (22-5-4NBHZ)									
8,545.9	90.02	89.13	7,070.3	-670.9	1,514.2	1,590.6	2.00	2.00	0.00
8,600.0	90.02	89.13	7,070.3	-670.1	1,568.3	1,644.2	0.00	0.00	0.00
8,700.0	90.02	89.13	7,070.3	-668.6	1,668.3	1,743.0	0.00	0.00	0.00
8,800.0	90.02	89.13	7,070.3	-667.0	1,768.3	1,841.9	0.00	0.00	0.00
8,900.0	90.02	89.13	7,070.2	-665.5	1,868.2	1,940.8	0.00	0.00	0.00
9,000.0	90.02	89.13	7,070.2	-664.0	1,968.2	2,039.7	0.00	0.00	0.00
9,100.0	90.02	89.13	7,070.1	-662.5	2,068.2	2,138.5	0.00	0.00	0.00
9,200.0	90.02	89.13	7,070.1	-661.0	2,168.2	2,237.4	0.00	0.00	0.00
9,300.0	90.02	89.13	7,070.1	-659.4	2,268.2	2,336.3	0.00	0.00	0.00
9,400.0	90.02	89.13	7,070.0	-657.9	2,368.2	2,435.2	0.00	0.00	0.00
9,500.0	90.02	89.13	7,070.0	-656.4	2,468.2	2,534.0	0.00	0.00	0.00
9,500.1	90.02	89.13	7,070.0	-656.4	2,468.3	2,534.2	0.00	0.00	0.00
Start DLS 2.00 TFO 179.46 - WP #2 (22-5-4NBHZ)									
9,530.3	89.42	89.13	7,070.1	-655.9	2,498.4	2,564.0	2.00	-2.00	0.02
9,600.0	89.42	89.13	7,070.9	-654.9	2,568.2	2,632.9	0.00	0.00	0.00
9,700.0	89.42	89.13	7,071.9	-653.4	2,668.1	2,731.8	0.00	0.00	0.00
9,800.0	89.42	89.13	7,072.9	-651.9	2,768.1	2,830.7	0.00	0.00	0.00
9,900.0	89.42	89.13	7,073.9	-650.4	2,868.1	2,929.5	0.00	0.00	0.00
10,000.0	89.42	89.13	7,074.9	-648.9	2,968.1	3,028.4	0.00	0.00	0.00
10,100.0	89.42	89.13	7,075.9	-647.3	3,068.1	3,127.3	0.00	0.00	0.00
10,200.0	89.42	89.13	7,077.0	-645.8	3,168.1	3,226.1	0.00	0.00	0.00
10,300.0	89.42	89.13	7,078.0	-644.3	3,268.0	3,325.0	0.00	0.00	0.00
10,400.0	89.42	89.13	7,079.0	-642.8	3,368.0	3,423.9	0.00	0.00	0.00
10,500.0	89.42	89.13	7,080.0	-641.3	3,468.0	3,522.8	0.00	0.00	0.00
10,500.1	89.42	89.13	7,080.0	-641.3	3,468.1	3,522.8	0.00	0.00	0.00
Start DLS 2.00 TFO -0.69 - WP #3 (22-5-4NBHZ)									
10,529.6	90.01	89.13	7,080.1	-640.9	3,497.6	3,552.0	2.00	2.00	-0.02
10,600.0	90.01	89.13	7,080.1	-639.8	3,568.0	3,621.6	0.00	0.00	0.00
10,700.0	90.01	89.13	7,080.1	-638.3	3,668.0	3,720.5	0.00	0.00	0.00
10,800.0	90.01	89.13	7,080.1	-636.7	3,768.0	3,819.4	0.00	0.00	0.00
10,900.0	90.01	89.13	7,080.1	-635.2	3,868.0	3,918.3	0.00	0.00	0.00
11,000.0	90.01	89.13	7,080.1	-633.7	3,968.0	4,017.1	0.00	0.00	0.00
11,100.0	90.01	89.13	7,080.1	-632.2	4,067.9	4,116.0	0.00	0.00	0.00
11,200.0	90.01	89.13	7,080.1	-630.6	4,167.9	4,214.9	0.00	0.00	0.00
11,300.0	90.01	89.13	7,080.0	-629.1	4,267.9	4,313.8	0.00	0.00	0.00
11,400.0	90.01	89.13	7,080.0	-627.6	4,367.9	4,412.6	0.00	0.00	0.00
11,500.0	90.01	89.13	7,080.0	-626.1	4,467.9	4,511.5	0.00	0.00	0.00
11,600.0	90.01	89.13	7,080.0	-624.6	4,567.9	4,610.4	0.00	0.00	0.00
11,630.6	90.01	89.13	7,080.0	-624.1	4,598.5	4,640.6	0.00	0.00	0.00
BHL 2160°FNL & 2195°FNL, Sec.4									

Database:	Landmark	Local Co-ordinate Reference:	Well SRC Wiedeman 22-5-4NBHZ
Company:	Synergy Resources	TVD Reference:	WELL @ 4796.0ft (RKB - 13')
Project:	Sec.5-T5N-R66W	MD Reference:	WELL @ 4796.0ft (RKB - 13')
Site:	SRC Wiedeman Pad Sec.5-T5N-R66W	North Reference:	True
Well:	SRC Wiedeman 22-5-4NBHZ	Survey Calculation Method:	Minimum Curvature
Wellbore:	Wellbore #1		
Design:	Plan #3 (9-24-14)R		

Targets									
Target Name - hit/miss target - Shape	Dip Angle (°)	Dip Dir. (°)	TVD (ft)	+N/-S (ft)	+E/-W (ft)	Northing (ft)	Easting (ft)	Latitude	Longitude
WP #1 (22-5-4NBHZ) - plan hits target center - Point	0.00	0.00	7,070.0	-671.6	1,468.4	1,400,742.54	3,195,850.23	40.431307	-104.796461
WP #3 (22-5-4NBHZ) - plan hits target center - Point	0.00	0.00	7,080.0	-641.3	3,468.1	1,400,788.59	3,197,849.55	40.431390	-104.789278
WP #2 (22-5-4NBHZ) - plan hits target center - Point	0.00	0.00	7,070.0	-656.4	2,468.3	1,400,765.61	3,196,849.94	40.431349	-104.792870
BHL 2160'FNL & 2196' - plan hits target center - Point	0.00	0.00	7,080.0	-624.1	4,598.5	1,400,814.69	3,198,979.71	40.431437	-104.785218
SHL 1467'FNL & 243' - plan hits target center - Point	0.00	0.00	1.0	0.0	0.0	1,401,402.55	3,194,376.65	40.433151	-104.801736

Casing Points					
Measured Depth (ft)	Vertical Depth (ft)	Name	Casing Diameter (")	Hole Diameter (")	
7,493.3	7,050.8	7"	7	7-1/2	

Formations					
Measured Depth (ft)	Vertical Depth (ft)	Name	Lithology	Dip (°)	Dip Direction (°)
6,899.4	6,800.0	SHANNON SPRINGS		0.00	
6,945.4	6,834.0	TOP NIOBRARA		0.00	
6,978.2	6,857.0	A CHALK		0.00	
7,020.4	6,885.0	A MARL		0.00	
7,083.1	6,923.0	B CHALK		0.00	
7,140.8	6,954.0	B MARL		0.00	
7,296.1	7,017.0	C CHALK		0.00	
7,450.6	7,048.0	C MARL		0.00	

Plan Annotations				
Measured Depth (ft)	Vertical Depth (ft)	Local Coordinates		Comment
		+N/-S (ft)	+E/-W (ft)	
800.0	800.0	0.0	0.0	Start Build 2.00
6,393.3	6,335.0	-660.8	-217.2	Start Build 8.00
8,500.1	7,070.0	-697.4	-229.2	Start DLS 2.00 TFO 0.06
9,500.1	7,070.0	-686.9	461.9	Start DLS 2.00 TFO 179.46
10,500.1	7,080.0	-671.6	1,468.4	Start DLS 2.00 TFO -0.69
11,630.6	7,080.0	-656.4	2,468.3	TD at 11630.6



Synergy Resources

Sec.5-T5N-R66W

SRC Wiedeman Pad Sec.5-T5N-R66W

SRC Wiedeman 22-5-4NBHZ

Wellbore #1

Plan #3 (9-24-14)

Anticollision Report

24 September, 2014

Company:	Synergy Resources	Local Co-ordinate Reference:	Well SRC Wiedeman 22-5-4NBHZ
Project:	Sec.5-T5N-R66W	TVD Reference:	WELL @ 4796.0ft (RKB - 13')
Reference Site:	SRC Wiedeman Pad Sec.5-T5N-R66W	MD Reference:	WELL @ 4796.0ft (RKB - 13')
Site Error:	0.0ft	North Reference:	True
Reference Well:	SRC Wiedeman 22-5-4NBHZ	Survey Calculation Method:	Minimum Curvature
Well Error:	0.0ft	Output errors are at	2.00 sigma
Reference Wellbore	Wellbore #1	Database:	Landmark
Reference Design:	Plan #3 (9-24-14)	Offset TVD Reference:	Offset Datum

Reference	Plan #3 (9-24-14)		
Filter type:	NO GLOBAL FILTER: Using user defined selection & filtering criteria		
Interpolation Method:	Stations	Error Model:	ISCWSA
Depth Range:	Unlimited	Scan Method:	Closest Approach 3D
Results Limited by:	Maximum center-center distance of 1,000.0ft	Error Surface:	Elliptical Conic
Warning Levels Evaluated at:	2.00 Sigma		

Survey Tool Program	Date 9/24/2014			
From (ft)	To (ft)	Survey (Wellbore)	Tool Name	Description
0.0	11,630.6	Plan #3 (9-24-14)R (Wellbore #1)	MWD	MWD - Standard

Summary						
Site Name	Reference Measured Depth (ft)	Offset Measured Depth (ft)	Distance Between Centres (ft)	Distance Between Ellipses (ft)	Separation Factor	Warning
Northridge Pad Sec.4-T5N-R66W						
Northridge 11-4D (Exist.) - Wellbore #1 - Wellbore #1						Out of range
Northridge 12-4D (Exist.) - Wellbore #1 - Wellbore #1	10,302.9	7,344.0	100.0	-32.3	0.756	Level 1, CC, ES, SF
Northridge 21-4D (Exist.) - Wellbore #1 - Wellbore #1						Out of range
Northridge 22-4D (Exist.) - Wellbore #1 - Wellbore #1	11,496.6	7,102.8	114.7	-31.2	0.786	Level 1, CC
Northridge 22-4D (Exist.) - Wellbore #1 - Wellbore #1	11,500.0	7,102.7	114.7	-31.3	0.786	Level 1, ES, SF
Northridge 4AD (Exist.) - Wellbore #1 - Wellbore #1	10,952.3	7,223.9	627.2	488.3	4.514	CC, ES
Northridge 4AD (Exist.) - Wellbore #1 - Wellbore #1	11,000.0	7,222.6	629.0	488.8	4.484	SF
Northridge 4KD (Exist.) - Wellbore #1 - Wellbore #1	10,741.9	7,270.9	714.1	567.9	4.885	CC, ES
Northridge 4KD (Exist.) - Wellbore #1 - Wellbore #1	10,800.0	7,271.1	716.5	568.7	4.848	SF
SRC Kelly Farms Pad Sec.4-T5N-R66W						
SRC Kelly Farms 12-4-3CHZ - Wellbore #1 - Wellbore #1	11,630.6	6,903.7	334.2	258.3	4.402	CC, ES, SF
SRC Kelly Farms 22-4-3CHZ - Wellbore #1 - Wellbore #1	11,630.6	6,883.0	398.5	298.5	3.983	CC, ES, SF
SRC Kelly Farms A-4-3CHZ - Wellbore #1 - Wellbore #1	11,630.6	6,910.9	475.5	348.7	3.748	CC, ES, SF
SRC Kelly Farms A-4-3NBH - Wellbore #1 - Wellbore #1	11,630.6	6,794.0	716.0	589.0	5.638	CC, ES, SF
SRC Wiedeman Pad Sec.5-T5N-R66W						
SRC Wiedeman 11-5-3NBH - Wellbore #1 - Plan #3 (9-	800.0	800.0	60.0	56.7	17.807	CC, ES
SRC Wiedeman 11-5-3NBH - Wellbore #1 - Plan #3 (9-	1,000.0	999.8	66.9	62.7	15.936	SF
SRC Wiedeman 12-5-4CHZ - Wellbore #1 - Plan #3 (9-2	800.0	800.0	30.0	26.6	8.900	CC, ES
SRC Wiedeman 12-5-4CHZ - Wellbore #1 - Plan #3 (9-2	11,630.6	11,538.6	496.8	235.4	1.901	SF
SRC Wiedeman 12-5-4NBH - Wellbore #1 - Plan #3 (9-	800.0	800.0	15.0	11.6	4.451	CC, ES
SRC Wiedeman 12-5-4NBH - Wellbore #1 - Plan #3 (9-	11,630.6	11,747.2	310.8	75.2	1.319	Level 3, SF
SRC Wiedeman 21-5-3CHZ - Wellbore #1 - Plan #2 (9-2	500.0	500.0	90.1	88.0	44.522	CC, ES
SRC Wiedeman 21-5-3CHZ - Wellbore #1 - Plan #2 (9-2	900.0	885.5	118.2	114.4	31.103	SF
SRC Wiedeman 21-5-3NBH - Wellbore #1 - Plan #3 (9-	800.0	800.0	75.0	71.7	22.256	CC, ES
SRC Wiedeman 21-5-3NBH - Wellbore #1 - Plan #3 (9-	1,000.0	999.8	81.9	77.7	19.509	SF
SRC Wiedeman 22-5-4CHZ - Wellbore #1 - Wellbore #1	0.0	0.0	15.0	15.0	10,000.000	CC, ES
SRC Wiedeman 22-5-4CHZ - Wellbore #1 - Wellbore #1	11,576.9	11,784.0	292.4	93.8	1.473	Level 3, SF
SRC Wiedeman A-5-3NBH - Wellbore #1 - Plan #3 (9-2	800.0	800.0	45.0	41.7	13.358	CC, ES
SRC Wiedeman A-5-3NBH - Wellbore #1 - Plan #3 (9-2	11,630.6	11,668.2	825.0	567.1	3.198	SF

Company:	Synergy Resources	Local Co-ordinate Reference:	Well SRC Wiedeman 22-5-4NBHZ
Project:	Sec.5-T5N-R66W	TVD Reference:	WELL @ 4796.0ft (RKB - 13')
Reference Site:	SRC Wiedeman Pad Sec.5-T5N-R66W	MD Reference:	WELL @ 4796.0ft (RKB - 13')
Site Error:	0.0ft	North Reference:	True
Reference Well:	SRC Wiedeman 22-5-4NBHZ	Survey Calculation Method:	Minimum Curvature
Well Error:	0.0ft	Output errors are at	2.00 sigma
Reference Wellbore	Wellbore #1	Database:	Landmark
Reference Design:	Plan #3 (9-24-14)	Offset TVD Reference:	Offset Datum

Offset Design		Northridge Pad Sec.4-T5N-R66W - Northridge 12-4D (Exist.) - Wellbore #1 - Wellbore #1										Offset Site Error:		0.0 ft		
Survey Program: 182-MWD														Offset Well Error:		0.0 ft
Reference		Offset		Semi Major Axis			Distance							Warning		
Measured Depth	Vertical Depth	Measured Depth	Vertical Depth	Reference	Offset	Highside Toolface	Offset Wellbore Centre		Between Centres	Between Ellipses	Minimum Separation	Separation Factor				
(ft)	(ft)	(ft)	(ft)	(ft)	(ft)	(°)	+N/-S (ft)	+E/-W (ft)	(ft)	(ft)	(ft)					
9,400.0	7,070.0	7,339.5	7,031.9	70.0	37.8	-92.38	-544.3	3,269.5	908.4	801.0	107.42	8.457				
9,500.1	7,070.0	7,338.0	7,030.4	72.7	37.8	-91.53	-544.3	3,269.5	809.0	698.8	110.19	7.342				
9,530.3	7,070.1	7,338.0	7,030.4	73.5	37.8	-86.78	-544.3	3,269.5	779.1	668.3	110.79	7.032				
9,600.0	7,070.9	7,339.5	7,031.9	75.4	37.8	-87.65	-544.3	3,269.5	710.0	597.2	112.79	6.295				
9,700.0	7,071.9	7,340.2	7,032.5	78.2	37.8	-88.01	-544.3	3,269.5	611.1	495.6	115.56	5.288				
9,800.0	7,072.9	7,340.8	7,033.1	80.9	37.8	-88.37	-544.3	3,269.5	512.7	394.4	118.34	4.333				
9,900.0	7,073.9	7,341.4	7,033.8	83.7	37.8	-88.72	-544.3	3,269.5	415.1	294.0	121.11	3.428				
10,000.0	7,074.9	7,342.0	7,034.4	86.4	37.8	-89.09	-544.3	3,269.5	319.0	195.1	123.89	2.575				
10,100.0	7,075.9	7,342.7	7,035.0	89.2	37.8	-89.45	-544.3	3,269.5	226.2	99.5	126.66	1.786				
10,200.0	7,077.0	7,343.3	7,035.7	91.9	37.8	-89.82	-544.3	3,269.5	143.5	14.0	129.44	1.108	Level 2			
10,300.0	7,078.0	7,344.0	7,036.3	94.7	37.8	-90.19	-544.3	3,269.5	100.0	-32.2	132.21	0.756	Level 1			
10,302.9	7,078.0	7,344.0	7,036.3	94.7	37.8	-90.20	-544.3	3,269.5	100.0	-32.3	132.29	0.756	Level 1, CC, ES, SF			
10,400.0	7,079.0	7,344.6	7,037.0	97.4	37.8	-90.56	-544.3	3,269.4	139.3	4.4	134.97	1.032	Level 2			
10,500.1	7,080.0	7,345.3	7,037.6	100.2	37.8	-90.94	-544.3	3,269.4	221.1	83.3	137.74	1.605				
10,529.6	7,080.1	7,345.3	7,037.7	101.0	37.8	-89.71	-544.3	3,269.4	247.7	109.2	138.55	1.788				
10,600.0	7,080.1	7,345.0	7,037.4	103.0	37.8	-89.56	-544.3	3,269.4	313.4	173.0	140.49	2.231				
10,700.0	7,080.1	7,344.7	7,037.0	105.7	37.8	-89.34	-544.3	3,269.4	409.5	266.2	143.26	2.858				
10,800.0	7,080.1	7,344.3	7,036.6	108.5	37.8	-89.12	-544.3	3,269.4	507.0	361.0	146.02	3.472				
10,900.0	7,080.1	7,343.9	7,036.3	111.3	37.8	-88.90	-544.3	3,269.5	605.4	456.6	148.78	4.069				
11,000.0	7,080.1	7,343.5	7,035.9	114.0	37.8	-88.67	-544.3	3,269.5	704.2	552.7	151.54	4.647				
11,100.0	7,080.1	7,343.1	7,035.5	116.8	37.8	-88.45	-544.3	3,269.5	803.3	649.0	154.30	5.206				
11,200.0	7,080.1	7,342.7	7,035.1	119.6	37.8	-88.22	-544.3	3,269.5	902.6	745.6	157.05	5.747				

Company:	Synergy Resources	Local Co-ordinate Reference:	Well SRC Wiedeman 22-5-4NBHZ
Project:	Sec.5-T5N-R66W	TVD Reference:	WELL @ 4796.0ft (RKB - 13')
Reference Site:	SRC Wiedeman Pad Sec.5-T5N-R66W	MD Reference:	WELL @ 4796.0ft (RKB - 13')
Site Error:	0.0ft	North Reference:	True
Reference Well:	SRC Wiedeman 22-5-4NBHZ	Survey Calculation Method:	Minimum Curvature
Well Error:	0.0ft	Output errors are at	2.00 sigma
Reference Wellbore	Wellbore #1	Database:	Landmark
Reference Design:	Plan #3 (9-24-14)	Offset TVD Reference:	Offset Datum

Offset Design Northridge Pad Sec.4-T5N-R66W - Northridge 22-4D (Exist.) - Wellbore #1 - Wellbore #1												Offset Site Error:	0.0 ft
Survey Program: 182-MWD												Offset Well Error:	0.0 ft
Reference	Offset	Semi Major Axis		Distance									
Measured Depth (ft)	Vertical Depth (ft)	Measured Depth (ft)	Vertical Depth (ft)	Reference (ft)	Offset (ft)	Highside Toolface (°)	Offset Wellbore Centre +N/-S (ft)	+E/-W (ft)	Between Centres (ft)	Between Ellipses (ft)	Minimum Separation (ft)	Separation Factor	Warning
10,529.6	7,080.1	7,126.3	7,058.1	101.0	18.4	99.87	-741.4	4,465.6	973.5	856.2	117.28	8.301	
10,600.0	7,080.1	7,124.5	7,056.3	103.0	18.4	99.02	-741.4	4,465.7	903.6	784.1	119.49	7.562	
10,700.0	7,080.1	7,122.0	7,053.8	105.7	18.4	97.82	-741.3	4,465.8	804.5	681.9	122.60	6.562	
10,800.0	7,080.1	7,119.6	7,051.4	108.5	18.4	96.61	-741.2	4,465.8	705.7	580.1	125.68	5.615	
10,900.0	7,080.1	7,117.1	7,048.9	111.3	18.4	95.41	-741.2	4,465.9	607.3	478.6	128.72	4.718	
11,000.0	7,080.1	7,114.7	7,046.5	114.0	18.4	94.21	-741.1	4,465.9	509.5	377.8	131.72	3.868	
11,100.0	7,080.1	7,112.3	7,044.1	116.8	18.4	93.02	-741.0	4,466.0	412.7	278.0	134.67	3.064	
11,200.0	7,080.1	7,109.9	7,041.7	119.6	18.4	91.83	-740.9	4,466.0	317.9	180.3	137.58	2.310	
11,300.0	7,080.0	7,107.5	7,039.3	122.3	18.4	90.63	-740.9	4,466.1	227.5	87.1	140.44	1.620	
11,400.0	7,080.0	7,105.1	7,036.9	125.1	18.4	89.44	-740.8	4,466.1	149.9	6.6	143.25	1.046 Level 2	
11,496.6	7,080.0	7,102.8	7,034.6	127.8	18.4	88.30	-740.7	4,466.2	114.7	-31.2	145.91	0.786 Level 1, CC	
11,500.0	7,080.0	7,102.7	7,034.5	127.9	18.4	88.25	-740.7	4,466.2	114.7	-31.3	146.00	0.786 Level 1, ES, SF	
11,600.0	7,080.0	7,100.3	7,032.2	130.7	18.4	87.07	-740.7	4,466.3	154.4	5.7	148.69	1.038 Level 2	
11,630.6	7,080.0	7,099.6	7,031.4	131.5	18.4	86.71	-740.6	4,466.3	176.4	26.9	149.50	1.180 Level 2	

Company:	Synergy Resources	Local Co-ordinate Reference:	Well SRC Wiedeman 22-5-4NBHZ
Project:	Sec.5-T5N-R66W	TVD Reference:	WELL @ 4796.0ft (RKB - 13')
Reference Site:	SRC Wiedeman Pad Sec.5-T5N-R66W	MD Reference:	WELL @ 4796.0ft (RKB - 13')
Site Error:	0.0ft	North Reference:	True
Reference Well:	SRC Wiedeman 22-5-4NBHZ	Survey Calculation Method:	Minimum Curvature
Well Error:	0.0ft	Output errors are at	2.00 sigma
Reference Wellbore	Wellbore #1	Database:	Landmark
Reference Design:	Plan #3 (9-24-14)	Offset TVD Reference:	Offset Datum

Offset Design Northridge Pad Sec.4-T5N-R66W - Northridge 4AD (Exist.) - Wellbore #1 - Wellbore #1												Offset Site Error:	0.0 ft
Survey Program: 182-MWD												Offset Well Error:	0.0 ft
Reference		Offset		Semi Major Axis			Distance						Warning
Measured Depth (ft)	Vertical Depth (ft)	Measured Depth (ft)	Vertical Depth (ft)	Reference (ft)	Offset (ft)	Highside Toolface (°)	Offset Wellbore Centre +N/-S (ft)	+E/-W (ft)	Between Centres (ft)	Between Ellipses (ft)	Minimum Separation (ft)	Separation Factor	
10,200.0	7,077.0	7,239.3	7,049.6	91.9	28.7	-90.73	-7.2	3,910.3	979.3	861.1	118.13	8.290	
10,300.0	7,078.0	7,238.0	7,048.3	94.7	28.7	-90.61	-7.2	3,910.3	904.8	783.9	120.90	7.484	
10,400.0	7,079.0	7,236.7	7,046.9	97.4	28.7	-90.49	-7.2	3,910.4	835.6	711.9	123.66	6.757	
10,500.1	7,080.0	7,235.3	7,045.5	100.2	28.7	-90.36	-7.2	3,910.4	773.1	646.7	126.43	6.115	
10,529.6	7,080.1	7,234.7	7,045.0	101.0	28.7	-90.72	-7.2	3,910.4	756.3	629.0	127.24	5.944	
10,600.0	7,080.1	7,233.0	7,043.3	103.0	28.7	-90.57	-7.2	3,910.5	719.3	590.1	129.19	5.568	
10,700.0	7,080.1	7,230.6	7,040.8	105.7	28.7	-90.34	-7.3	3,910.5	676.0	544.1	131.96	5.123	
10,800.0	7,080.1	7,228.0	7,038.3	108.5	28.7	-90.11	-7.3	3,910.6	645.4	510.7	134.73	4.790	
10,900.0	7,080.1	7,225.4	7,035.6	111.3	28.7	-89.87	-7.3	3,910.7	629.4	491.9	137.50	4.577	
10,952.3	7,080.1	7,223.9	7,034.2	112.7	28.7	-89.74	-7.3	3,910.7	627.2	488.3	138.95	4.514 CC, ES	
11,000.0	7,080.1	7,222.6	7,032.9	114.0	28.7	-89.62	-7.3	3,910.7	629.0	488.8	140.27	4.484 SF	
11,100.0	7,080.1	7,219.7	7,030.0	116.8	28.7	-89.35	-7.3	3,910.8	644.4	501.3	143.03	4.505	
11,200.0	7,080.1	7,216.8	7,027.0	119.6	28.7	-89.08	-7.3	3,910.9	674.3	528.5	145.80	4.625	
11,300.0	7,080.0	7,213.7	7,023.9	122.3	28.7	-88.80	-7.3	3,911.0	717.1	568.5	148.56	4.827	
11,400.0	7,080.0	7,210.4	7,020.7	125.1	28.7	-88.50	-7.3	3,911.1	770.5	619.2	151.32	5.092	
11,500.0	7,080.0	7,207.0	7,017.3	127.9	28.7	-88.19	-7.3	3,911.2	832.5	678.5	154.07	5.404	
11,600.0	7,080.0	7,203.5	7,013.8	130.7	28.7	-87.87	-7.4	3,911.3	901.4	744.6	156.82	5.748	
11,630.6	7,080.0	7,202.4	7,012.7	131.5	28.7	-87.77	-7.4	3,911.4	923.6	766.0	157.66	5.858	

Company:	Synergy Resources	Local Co-ordinate Reference:	Well SRC Wiedeman 22-5-4NBHZ
Project:	Sec.5-T5N-R66W	TVD Reference:	WELL @ 4796.0ft (RKB - 13')
Reference Site:	SRC Wiedeman Pad Sec.5-T5N-R66W	MD Reference:	WELL @ 4796.0ft (RKB - 13')
Site Error:	0.0ft	North Reference:	True
Reference Well:	SRC Wiedeman 22-5-4NBHZ	Survey Calculation Method:	Minimum Curvature
Well Error:	0.0ft	Output errors are at	2.00 sigma
Reference Wellbore	Wellbore #1	Database:	Landmark
Reference Design:	Plan #3 (9-24-14)	Offset TVD Reference:	Offset Datum

Offset Design Northridge Pad Sec.4-T5N-R66W - Northridge 4KD (Exist.) - Wellbore #1 - Wellbore #1												Offset Site Error:	0.0 ft
Survey Program: 124-MWD												Offset Well Error:	0.0 ft
Reference	Offset	Semi Major Axis		Distance									
Measured Depth (ft)	Vertical Depth (ft)	Measured Depth (ft)	Vertical Depth (ft)	Reference (ft)	Offset (ft)	Highside Toolface (°)	Offset Wellbore Centre +N/-S (ft)	+E/-W (ft)	Between Centres (ft)	Between Ellipses (ft)	Minimum Separation (ft)	Separation Factor	Warning
10,100.0	7,075.9	7,264.6	7,026.7	89.2	43.3	88.90	-1,351.6	3,720.7	960.2	831.8	128.44	7.476	
10,200.0	7,077.0	7,265.9	7,028.0	91.9	43.3	89.00	-1,351.6	3,720.7	896.4	765.2	131.20	6.833	
10,300.0	7,078.0	7,267.2	7,029.4	94.7	43.3	89.11	-1,351.6	3,720.7	839.8	705.8	133.96	6.269	
10,400.0	7,079.0	7,268.6	7,030.7	97.4	43.3	89.22	-1,351.6	3,720.7	791.8	655.0	136.73	5.791	
10,500.1	7,080.0	7,269.9	7,032.1	100.2	43.3	89.33	-1,351.6	3,720.7	754.0	614.5	139.50	5.405	
10,529.6	7,080.1	7,270.2	7,032.3	101.0	43.3	89.53	-1,351.6	3,720.7	745.0	604.7	140.31	5.310	
10,600.0	7,080.1	7,270.4	7,032.6	103.0	43.3	89.55	-1,351.7	3,720.7	728.1	585.8	142.26	5.118	
10,700.0	7,080.1	7,270.8	7,032.9	105.7	43.3	89.58	-1,351.7	3,720.7	715.4	570.3	145.03	4.932	
10,741.9	7,080.1	7,270.9	7,033.1	106.9	43.3	89.59	-1,351.7	3,720.7	714.1	567.9	146.19	4.885 CC, ES	
10,800.0	7,080.1	7,271.1	7,033.3	108.5	43.3	89.61	-1,351.7	3,720.7	716.5	568.7	147.81	4.848 SF	
10,900.0	7,080.1	7,271.5	7,033.6	111.3	43.3	89.64	-1,351.7	3,720.7	731.4	580.8	150.58	4.857	
11,000.0	7,080.1	7,271.8	7,034.0	114.0	43.3	89.67	-1,351.7	3,720.7	759.3	606.0	153.36	4.952	
11,100.0	7,080.1	7,272.2	7,034.3	116.8	43.3	89.69	-1,351.7	3,720.7	798.9	642.8	156.13	5.117	
11,200.0	7,080.1	7,272.5	7,034.7	119.6	43.3	89.72	-1,351.7	3,720.7	848.4	689.5	158.91	5.339	
11,300.0	7,080.0	7,272.9	7,035.0	122.3	43.3	89.75	-1,351.7	3,720.7	906.4	744.7	161.69	5.605	
11,400.0	7,080.0	7,273.3	7,035.4	125.1	43.3	89.78	-1,351.7	3,720.7	971.1	806.7	164.47	5.905	

Company:	Synergy Resources	Local Co-ordinate Reference:	Well SRC Wiedeman 22-5-4NBHZ
Project:	Sec.5-T5N-R66W	TVD Reference:	WELL @ 4796.0ft (RKB - 13')
Reference Site:	SRC Wiedeman Pad Sec.5-T5N-R66W	MD Reference:	WELL @ 4796.0ft (RKB - 13')
Site Error:	0.0ft	North Reference:	True
Reference Well:	SRC Wiedeman 22-5-4NBHZ	Survey Calculation Method:	Minimum Curvature
Well Error:	0.0ft	Output errors are at	2.00 sigma
Reference Wellbore	Wellbore #1	Database:	Landmark
Reference Design:	Plan #3 (9-24-14)	Offset TVD Reference:	Offset Datum

Offset Design												Offset Site Error:	0.0 ft
SRC Kelly Farms Pad Sec.4-T5N-R66W - SRC Kelly Farms 12-4-3CHZ - Wellbore #1 - Wellbore #1												Offset Well Error:	0.0 ft
Survey Program: 169-MWD													
Reference		Offset		Semi Major Axis			Distance						
Measured Depth (ft)	Vertical Depth (ft)	Measured Depth (ft)	Vertical Depth (ft)	Reference (ft)	Offset (ft)	Highside Toolface (°)	Offset Wellbore Centre +N/-S (ft)	+E/-W (ft)	Between Centres (ft)	Between Ellipses (ft)	Minimum Separation (ft)	Separation Factor	Warning
10,900.0	7,080.1	6,730.9	6,718.7	111.3	14.0	-14.26	-537.2	4,797.8	991.4	944.0	47.43	20.903	
11,000.0	7,080.1	6,752.2	6,738.8	114.0	14.0	-15.21	-536.8	4,805.0	897.8	848.1	49.64	18.084	
11,100.0	7,080.1	6,788.0	6,772.2	116.8	14.1	-17.05	-536.0	4,817.7	804.8	751.6	53.23	15.119	
11,200.0	7,080.1	6,788.0	6,772.2	119.6	14.1	-17.05	-536.0	4,817.7	712.4	658.1	54.30	13.120	
11,300.0	7,080.0	6,815.7	6,797.7	122.3	14.2	-18.77	-535.4	4,828.4	621.1	563.1	57.99	10.710	
11,400.0	7,080.0	6,838.0	6,818.0	125.1	14.2	-20.40	-534.7	4,837.7	531.5	469.8	61.74	8.609	
11,500.0	7,080.0	6,877.0	6,852.5	127.9	14.3	-23.90	-533.3	4,855.8	444.3	375.5	68.88	6.451	
11,600.0	7,080.0	6,877.0	6,852.5	130.7	14.3	-23.90	-533.3	4,855.8	360.0	289.8	70.19	5.129	
11,630.6	7,080.0	6,903.7	6,875.6	131.5	14.4	-26.88	-532.3	4,869.4	334.2	258.3	75.92	4.402 CC, ES, SF	

Company:	Synergy Resources	Local Co-ordinate Reference:	Well SRC Wiedeman 22-5-4NBHZ
Project:	Sec.5-T5N-R66W	TVD Reference:	WELL @ 4796.0ft (RKB - 13')
Reference Site:	SRC Wiedeman Pad Sec.5-T5N-R66W	MD Reference:	WELL @ 4796.0ft (RKB - 13')
Site Error:	0.0ft	North Reference:	True
Reference Well:	SRC Wiedeman 22-5-4NBHZ	Survey Calculation Method:	Minimum Curvature
Well Error:	0.0ft	Output errors are at	2.00 sigma
Reference Wellbore	Wellbore #1	Database:	Landmark
Reference Design:	Plan #3 (9-24-14)	Offset TVD Reference:	Offset Datum

Offset Design												Offset Site Error:	0.0 ft
SRC Kelly Farms Pad Sec.4-T5N-R66W - SRC Kelly Farms 22-4-3CHZ - Wellbore #1 - Wellbore #1												Offset Well Error:	0.0 ft
Survey Program: 80-MWD													
Reference		Offset		Semi Major Axis			Distance						
Measured Depth (ft)	Vertical Depth (ft)	Measured Depth (ft)	Vertical Depth (ft)	Reference (ft)	Offset (ft)	Highside Toolface (°)	Offset Wellbore Centre +N/-S (ft)	+E/-W (ft)	Between Centres (ft)	Between Ellipses (ft)	Minimum Separation (ft)	Separation Factor	Warning
11,000.0	7,080.1	6,754.1	6,740.8	114.0	14.5	27.23	-780.0	4,858.9	954.9	885.4	69.47	13.746	
11,100.0	7,080.1	6,772.4	6,757.9	116.8	14.6	28.53	-779.7	4,865.1	862.2	789.2	72.99	11.813	
11,200.0	7,080.1	6,795.0	6,779.0	119.6	14.6	30.31	-779.2	4,873.2	770.6	693.2	77.38	9.958	
11,300.0	7,080.0	6,795.0	6,779.0	122.3	14.6	30.31	-779.2	4,873.2	680.6	601.7	78.91	8.625	
11,400.0	7,080.0	6,831.7	6,812.7	125.1	14.7	33.65	-778.6	4,887.7	591.6	505.5	86.14	6.869	
11,500.0	7,080.0	6,855.5	6,834.1	127.9	14.8	36.16	-778.4	4,898.1	505.5	413.4	92.10	5.489	
11,600.0	7,080.0	6,883.0	6,858.4	130.7	14.9	39.47	-778.4	4,911.1	422.7	323.3	99.47	4.250	
11,630.6	7,080.0	6,883.0	6,858.4	131.5	14.9	39.47	-778.4	4,911.1	398.5	298.5	100.04	3.983 CC, ES, SF	

Company:	Synergy Resources	Local Co-ordinate Reference:	Well SRC Wiedeman 22-5-4NBHZ
Project:	Sec.5-T5N-R66W	TVD Reference:	WELL @ 4796.0ft (RKB - 13')
Reference Site:	SRC Wiedeman Pad Sec.5-T5N-R66W	MD Reference:	WELL @ 4796.0ft (RKB - 13')
Site Error:	0.0ft	North Reference:	True
Reference Well:	SRC Wiedeman 22-5-4NBHZ	Survey Calculation Method:	Minimum Curvature
Well Error:	0.0ft	Output errors are at	2.00 sigma
Reference Wellbore	Wellbore #1	Database:	Landmark
Reference Design:	Plan #3 (9-24-14)	Offset TVD Reference:	Offset Datum

Offset Design												Offset Site Error:	0.0 ft
SRC Kelly Farms Pad Sec.4-T5N-R66W - SRC Kelly Farms A-4-3CHZ - Wellbore #1 - Wellbore #1												Offset Well Error:	0.0 ft
Survey Program: 79-MWD													
Reference		Offset		Semi Major Axis			Distance						
Measured Depth (ft)	Vertical Depth (ft)	Measured Depth (ft)	Vertical Depth (ft)	Reference (ft)	Offset (ft)	Highside Toolface (°)	Offset Wellbore Centre +N/-S (ft)	+E/-W (ft)	Between Centres (ft)	Between Ellipses (ft)	Minimum Separation (ft)	Separation Factor	Warning
11,100.0	7,080.1	6,797.0	6,770.5	116.8	15.0	-46.80	-322.7	4,881.9	914.4	815.5	98.88	9.248	
11,200.0	7,080.1	6,824.0	6,795.9	119.6	15.0	-49.35	-324.3	4,890.8	825.1	720.5	104.54	7.892	
11,300.0	7,080.0	6,840.0	6,810.8	122.3	15.1	-50.96	-325.2	4,896.6	738.0	629.1	108.92	6.776	
11,400.0	7,080.0	6,858.5	6,827.7	125.1	15.1	-52.91	-326.2	4,903.9	653.7	539.9	113.77	5.745	
11,500.0	7,080.0	6,886.0	6,852.6	127.9	15.2	-55.98	-327.6	4,915.7	573.0	453.0	120.08	4.772	
11,600.0	7,080.0	6,886.0	6,852.6	130.7	15.2	-55.98	-327.6	4,915.7	497.9	375.5	122.42	4.067	
11,630.6	7,080.0	6,910.9	6,874.5	131.5	15.3	-58.93	-328.7	4,927.5	475.5	348.7	126.86	3.748 CC, ES, SF	

Company:	Synergy Resources	Local Co-ordinate Reference:	Well SRC Wiedeman 22-5-4NBHZ
Project:	Sec.5-T5N-R66W	TVD Reference:	WELL @ 4796.0ft (RKB - 13')
Reference Site:	SRC Wiedeman Pad Sec.5-T5N-R66W	MD Reference:	WELL @ 4796.0ft (RKB - 13')
Site Error:	0.0ft	North Reference:	True
Reference Well:	SRC Wiedeman 22-5-4NBHZ	Survey Calculation Method:	Minimum Curvature
Well Error:	0.0ft	Output errors are at	2.00 sigma
Reference Wellbore	Wellbore #1	Database:	Landmark
Reference Design:	Plan #3 (9-24-14)	Offset TVD Reference:	Offset Datum

Offset Design												Offset Site Error:	0.0 ft
SRC Kelly Farms Pad Sec.4-T5N-R66W - SRC Kelly Farms A-4-3NHZ - Wellbore #1 - Wellbore #1												Offset Well Error:	0.0 ft
Survey Program: 174-MWD													
Reference		Offset		Semi Major Axis			Distance						
Measured Depth (ft)	Vertical Depth (ft)	Measured Depth (ft)	Vertical Depth (ft)	Reference (ft)	Offset (ft)	Highside Toolface (°)	Offset Wellbore Centre +N/-S (ft)	+E/-W (ft)	Between Centres (ft)	Between Ellipses (ft)	Minimum Separation (ft)	Separation Factor	Warning
11,200.0	7,080.1	6,667.1	6,620.0	119.6	16.5	-51.26	-83.7	4,847.4	972.7	865.5	107.20	9.074	
11,300.0	7,080.0	6,704.0	6,651.1	122.3	16.6	-53.43	-81.7	4,867.1	904.5	792.2	112.34	8.052	
11,400.0	7,080.0	6,704.0	6,651.1	125.1	16.6	-53.43	-81.7	4,867.1	840.6	726.0	114.62	7.334	
11,500.0	7,080.0	6,744.4	6,683.6	127.9	16.8	-55.79	-79.8	4,891.1	782.4	662.2	120.12	6.513	
11,600.0	7,080.0	6,794.0	6,721.1	130.7	17.0	-58.69	-77.6	4,923.3	730.8	604.5	126.25	5.788	
11,630.6	7,080.0	6,794.0	6,721.1	131.5	17.0	-58.69	-77.6	4,923.3	716.0	589.0	126.99	5.638 CC, ES, SF	

Company:	Synergy Resources	Local Co-ordinate Reference:	Well SRC Wiedeman 22-5-4NBHZ
Project:	Sec.5-T5N-R66W	TVD Reference:	WELL @ 4796.0ft (RKB - 13')
Reference Site:	SRC Wiedeman Pad Sec.5-T5N-R66W	MD Reference:	WELL @ 4796.0ft (RKB - 13')
Site Error:	0.0ft	North Reference:	True
Reference Well:	SRC Wiedeman 22-5-4NBHZ	Survey Calculation Method:	Minimum Curvature
Well Error:	0.0ft	Output errors are at	2.00 sigma
Reference Wellbore	Wellbore #1	Database:	Landmark
Reference Design:	Plan #3 (9-24-14)	Offset TVD Reference:	Offset Datum

Offset Design													Offset Site Error:	0.0 ft
Survey Program: 0-MWD													Offset Well Error:	0.0 ft
Reference		Offset		Semi Major Axis			Distance							Warning
Measured Depth (ft)	Vertical Depth (ft)	Measured Depth (ft)	Vertical Depth (ft)	Reference (ft)	Offset (ft)	Highside Toolface (°)	Offset Wellbore Centre +N/-S (ft)	+E/-W (ft)	Between Centres (ft)	Between Ellipses (ft)	Minimum Separation (ft)	Separation Factor		
0.0	0.0	0.0	0.0	0.0	0.0	5.59	59.8	5.8	60.0					
100.0	100.0	100.0	100.0	0.1	0.1	5.59	59.8	5.8	60.0	59.8	0.22	267.108		
200.0	200.0	200.0	200.0	0.3	0.3	5.59	59.8	5.8	60.0	59.4	0.67	89.036		
300.0	300.0	300.0	300.0	0.6	0.6	5.59	59.8	5.8	60.0	58.9	1.12	53.422		
400.0	400.0	400.0	400.0	0.8	0.8	5.59	59.8	5.8	60.0	58.5	1.57	38.158		
500.0	500.0	500.0	500.0	1.0	1.0	5.59	59.8	5.8	60.0	58.0	2.02	29.679		
600.0	600.0	600.0	600.0	1.2	1.2	5.59	59.8	5.8	60.0	57.6	2.47	24.283		
700.0	700.0	700.0	700.0	1.5	1.5	5.59	59.8	5.8	60.0	57.1	2.92	20.547		
800.0	800.0	800.0	800.0	1.7	1.7	5.59	59.8	5.8	60.0	56.7	3.37	17.807 CC, ES		
900.0	900.0	900.0	900.0	1.9	1.9	167.74	59.8	5.8	61.7	57.9	3.79	16.273		
1,000.0	999.8	999.8	999.8	2.1	2.1	168.67	59.8	5.8	66.9	62.7	4.20	15.936 SF		
1,100.0	1,099.5	1,099.5	1,099.5	2.3	2.4	169.94	59.8	5.8	75.4	70.8	4.60	16.387		
1,200.0	1,198.7	1,198.7	1,198.7	2.5	2.6	171.30	59.8	5.8	87.5	82.4	5.01	17.444		
1,270.6	1,268.5	1,268.5	1,268.5	2.7	2.7	172.22	59.8	5.8	98.0	92.7	5.30	18.483		
1,300.0	1,297.5	1,297.5	1,297.5	2.8	2.8	172.58	59.8	5.8	102.8	97.4	5.43	18.933		
1,400.0	1,396.1	1,396.1	1,396.1	3.0	3.0	173.60	59.8	5.8	119.0	113.2	5.86	20.310		
1,500.0	1,494.8	1,494.8	1,494.8	3.4	3.2	174.37	59.8	5.8	135.3	129.0	6.30	21.481		
1,600.0	1,593.5	1,589.6	1,589.6	3.7	3.5	174.64	61.0	5.3	152.8	146.0	6.74	22.683		
1,700.0	1,692.1	1,683.3	1,683.1	4.0	3.7	174.23	65.1	3.5	172.8	165.7	7.18	24.082		
1,800.0	1,790.8	1,775.8	1,775.3	4.4	3.9	173.38	71.9	0.6	195.5	187.9	7.62	25.648		
1,900.0	1,889.4	1,867.7	1,866.7	4.7	4.1	172.26	81.4	-3.4	220.8	212.7	8.08	27.336		
2,000.0	1,988.1	1,964.1	1,962.4	5.1	4.3	171.18	92.3	-8.1	247.1	238.6	8.54	28.936		
2,100.0	2,086.7	2,060.5	2,058.0	5.4	4.6	170.30	103.3	-12.8	273.5	264.5	9.01	30.367		
2,200.0	2,185.4	2,156.9	2,153.7	5.8	4.8	169.58	114.2	-17.5	299.9	290.4	9.48	31.650		
2,300.0	2,284.0	2,253.3	2,249.3	6.2	5.1	168.97	125.2	-22.2	326.4	316.4	9.95	32.794		
2,400.0	2,382.7	2,349.6	2,344.9	6.5	5.3	168.46	136.1	-26.9	352.8	342.4	10.43	33.832		
2,500.0	2,481.3	2,446.0	2,440.6	6.9	5.6	168.02	147.0	-31.6	379.4	368.4	10.91	34.771		
2,600.0	2,580.0	2,542.4	2,536.2	7.3	5.9	167.63	158.0	-36.3	405.9	394.5	11.39	35.624		
2,700.0	2,678.6	2,638.8	2,631.9	7.7	6.2	167.29	168.9	-41.0	432.4	420.6	11.88	36.403		
2,800.0	2,777.3	2,735.2	2,727.5	8.0	6.4	166.99	179.9	-45.7	459.0	446.6	12.37	37.116		
2,900.0	2,875.9	2,831.6	2,823.2	8.4	6.7	166.73	190.8	-50.4	485.6	472.7	12.86	37.770		
3,000.0	2,974.6	2,927.9	2,918.8	8.8	7.0	166.49	201.7	-55.1	512.1	498.8	13.35	38.373		
3,100.0	3,073.3	3,024.3	3,014.5	9.2	7.3	166.27	212.7	-59.8	538.7	524.9	13.84	38.930		
3,200.0	3,171.9	3,120.7	3,110.1	9.6	7.6	166.08	223.6	-64.5	565.3	551.0	14.33	39.446		
3,300.0	3,270.6	3,217.1	3,205.7	9.9	7.9	165.90	234.6	-69.2	591.9	577.1	14.83	39.925		
3,400.0	3,369.2	3,313.5	3,301.4	10.3	8.2	165.74	245.5	-73.9	618.5	603.2	15.32	40.370		
3,500.0	3,467.9	3,409.9	3,397.0	10.7	8.4	165.59	256.5	-78.6	645.1	629.3	15.82	40.786		
3,600.0	3,566.5	3,506.2	3,492.7	11.1	8.7	165.45	267.4	-83.3	671.7	655.4	16.31	41.175		
3,700.0	3,665.2	3,602.6	3,588.3	11.5	9.0	165.33	278.3	-88.0	698.3	681.5	16.81	41.539		
3,800.0	3,763.8	3,699.0	3,684.0	11.8	9.3	165.21	289.3	-92.7	724.9	707.6	17.31	41.880		
3,900.0	3,862.5	3,795.4	3,779.6	12.2	9.6	165.10	300.2	-97.4	751.6	733.8	17.81	42.201		
4,000.0	3,961.1	3,891.8	3,875.3	12.6	9.9	165.00	311.2	-102.1	778.2	759.9	18.31	42.503		
4,100.0	4,059.8	3,988.2	3,970.9	13.0	10.2	164.91	322.1	-106.8	804.8	786.0	18.81	42.788		
4,200.0	4,158.4	4,084.5	4,066.5	13.4	10.5	164.82	333.0	-111.5	831.4	812.1	19.31	43.058		
4,300.0	4,257.1	4,180.9	4,162.2	13.8	10.8	164.73	344.0	-116.2	858.1	838.2	19.81	43.312		
4,400.0	4,355.8	4,281.8	4,262.3	14.2	11.1	164.65	355.4	-121.1	884.7	864.3	20.32	43.540		
4,500.0	4,454.4	4,416.7	4,396.6	14.5	11.4	164.67	367.1	-126.1	908.8	887.9	20.83	43.635		
4,600.0	4,553.1	4,554.2	4,533.9	14.9	11.7	164.86	373.1	-128.7	928.7	907.4	21.32	43.568		
4,700.0	4,651.7	4,672.0	4,651.7	15.3	11.9	165.15	373.8	-129.0	945.0	923.2	21.77	43.400		
4,800.0	4,750.4	4,770.6	4,750.4	15.7	12.1	165.40	373.8	-129.0	960.8	938.6	22.23	43.224		
4,900.0	4,849.0	4,869.3	4,849.0	16.1	12.2	165.64	373.8	-129.0	976.7	954.0	22.69	43.042		
5,000.0	4,947.7	4,968.0	4,947.7	16.5	12.4	165.87	373.8	-129.0	992.5	969.4	23.15	42.869		

CC - Min centre to center distance or convergent point, SF - min separation factor, ES - min ellipse separation

Company:	Synergy Resources	Local Co-ordinate Reference:	Well SRC Wiedeman 22-5-4NBHZ
Project:	Sec.5-T5N-R66W	TVD Reference:	WELL @ 4796.0ft (RKB - 13')
Reference Site:	SRC Wiedeman Pad Sec.5-T5N-R66W	MD Reference:	WELL @ 4796.0ft (RKB - 13')
Site Error:	0.0ft	North Reference:	True
Reference Well:	SRC Wiedeman 22-5-4NBHZ	Survey Calculation Method:	Minimum Curvature
Well Error:	0.0ft	Output errors are at	2.00 sigma
Reference Wellbore	Wellbore #1	Database:	Landmark
Reference Design:	Plan #3 (9-24-14)	Offset TVD Reference:	Offset Datum

SRC Wiedeman Pad Sec.5-T5N-R66W - SRC Wiedeman 12-5-4CHZ - Wellbore #1 - Plan #3 (9-24-14)													Offset Site Error:	0.0 ft
Survey Program: 0-MWD													Offset Well Error:	0.0 ft
Reference		Offset		Semi Major Axis			Distance							
Measured Depth (ft)	Vertical Depth (ft)	Measured Depth (ft)	Vertical Depth (ft)	Reference (ft)	Offset (ft)	Highside Toolface (°)	Offset Wellbore Centre +N/-S (ft)	+E/-W (ft)	Between Centres (ft)	Between Ellipses (ft)	Minimum Separation (ft)	Separation Factor	Warning	
0.0	0.0	0.0	0.0	0.0	0.0	5.32	29.9	2.8	30.0					
100.0	100.0	100.0	100.0	0.1	0.1	5.32	29.9	2.8	30.0	29.8	0.22	133.504		
200.0	200.0	200.0	200.0	0.3	0.3	5.32	29.9	2.8	30.0	29.3	0.67	44.501		
300.0	300.0	300.0	300.0	0.6	0.6	5.32	29.9	2.8	30.0	28.9	1.12	26.701		
400.0	400.0	400.0	400.0	0.8	0.8	5.32	29.9	2.8	30.0	28.4	1.57	19.072		
500.0	500.0	500.0	500.0	1.0	1.0	5.32	29.9	2.8	30.0	28.0	2.02	14.834		
600.0	600.0	600.0	600.0	1.2	1.2	5.32	29.9	2.8	30.0	27.5	2.47	12.137		
700.0	700.0	700.0	700.0	1.5	1.5	5.32	29.9	2.8	30.0	27.1	2.92	10.270		
800.0	800.0	800.0	800.0	1.7	1.7	5.32	29.9	2.8	30.0	26.6	3.37	8.900 CC, ES		
900.0	900.0	900.0	900.0	1.9	1.9	167.83	29.9	2.8	31.7	27.9	3.79	8.358		
1,000.0	999.8	999.8	999.8	2.1	2.1	169.52	29.9	2.8	36.8	32.6	4.20	8.781		
1,100.0	1,099.5	1,099.5	1,099.5	2.3	2.4	171.50	29.9	2.8	45.4	40.8	4.60	9.872		
1,200.0	1,198.7	1,198.7	1,198.7	2.5	2.6	173.26	29.9	2.8	57.5	52.5	5.01	11.475		
1,270.6	1,268.5	1,268.5	1,268.5	2.7	2.7	174.30	29.9	2.8	68.2	62.8	5.30	12.851		
1,300.0	1,297.5	1,297.5	1,297.5	2.8	2.8	174.67	29.9	2.8	72.9	67.5	5.43	13.436		
1,400.0	1,396.1	1,396.1	1,396.1	3.0	3.0	175.65	29.9	2.8	89.2	83.4	5.86	15.229		
1,500.0	1,494.8	1,498.0	1,498.0	3.4	3.2	175.95	28.6	1.7	104.1	97.8	6.28	16.581		
1,600.0	1,593.5	1,600.9	1,600.8	3.7	3.4	175.41	24.4	-1.7	115.7	109.0	6.68	17.322		
1,700.0	1,692.1	1,704.4	1,703.9	4.0	3.6	174.21	17.4	-7.5	124.2	117.1	7.10	17.485		
1,800.0	1,790.8	1,804.6	1,803.4	4.4	3.8	172.74	8.8	-14.4	130.7	123.2	7.53	17.351		
1,900.0	1,889.4	1,904.4	1,902.6	4.7	4.0	171.42	0.3	-21.4	137.3	129.3	7.98	17.211		
2,000.0	1,988.1	2,004.1	2,001.7	5.1	4.3	170.22	-8.2	-28.4	144.0	135.6	8.43	17.072		
2,100.0	2,086.7	2,103.8	2,100.8	5.4	4.5	169.13	-16.7	-35.3	150.7	141.8	8.90	16.933		
2,200.0	2,185.4	2,203.6	2,200.0	5.8	4.8	168.13	-25.2	-42.3	157.5	148.1	9.38	16.798		
2,300.0	2,284.0	2,303.3	2,299.1	6.2	5.0	167.22	-33.7	-49.2	164.3	154.5	9.86	16.666		
2,400.0	2,382.7	2,403.0	2,398.2	6.5	5.3	166.37	-42.2	-56.2	171.2	160.8	10.35	16.538		
2,500.0	2,481.3	2,502.8	2,497.3	6.9	5.6	165.60	-50.7	-63.2	178.1	167.2	10.85	16.414		
2,600.0	2,580.0	2,602.5	2,596.5	7.3	5.8	164.88	-59.2	-70.1	185.0	173.6	11.35	16.295		
2,700.0	2,678.6	2,702.2	2,695.6	7.7	6.1	164.21	-67.7	-77.1	191.9	180.1	11.86	16.180		
2,800.0	2,777.3	2,802.0	2,794.7	8.0	6.4	163.59	-76.2	-84.1	198.9	186.5	12.38	16.070		
2,900.0	2,875.9	2,901.7	2,893.8	8.4	6.7	163.01	-84.7	-91.0	205.9	193.0	12.90	15.965		
3,000.0	2,974.6	3,001.4	2,993.0	8.8	7.0	162.47	-93.2	-98.0	212.9	199.5	13.42	15.865		
3,100.0	3,073.3	3,101.2	3,092.1	9.2	7.2	161.96	-101.7	-104.9	220.0	206.0	13.95	15.768		
3,200.0	3,171.9	3,200.9	3,191.2	9.6	7.5	161.49	-110.2	-111.9	227.0	212.5	14.48	15.677		
3,300.0	3,270.6	3,300.6	3,290.3	9.9	7.8	161.04	-118.7	-118.9	234.1	219.1	15.02	15.589		
3,400.0	3,369.2	3,400.4	3,389.5	10.3	8.1	160.62	-127.2	-125.8	241.2	225.6	15.55	15.505		
3,500.0	3,467.9	3,500.1	3,488.6	10.7	8.4	160.22	-135.7	-132.8	248.3	232.2	16.09	15.425		
3,600.0	3,566.5	3,599.8	3,587.7	11.1	8.7	159.85	-144.2	-139.8	255.4	238.7	16.64	15.348		
3,700.0	3,665.2	3,699.6	3,686.9	11.5	9.0	159.50	-152.7	-146.7	262.5	245.3	17.18	15.275		
3,800.0	3,763.8	3,799.3	3,786.0	11.8	9.3	159.16	-161.2	-153.7	269.6	251.9	17.73	15.205		
3,900.0	3,862.5	3,899.0	3,885.1	12.2	9.6	158.84	-169.7	-160.7	276.7	258.4	18.28	15.138		
4,000.0	3,961.1	3,998.8	3,984.2	12.6	9.9	158.54	-178.2	-167.6	283.9	265.0	18.83	15.074		
4,100.0	4,059.8	4,098.5	4,083.4	13.0	10.2	158.25	-186.7	-174.6	291.0	271.6	19.38	15.013		
4,200.0	4,158.4	4,191.2	4,175.7	13.4	10.4	158.19	-193.5	-180.1	299.3	279.4	19.88	15.057		
4,300.0	4,257.1	4,283.4	4,267.7	13.8	10.6	158.51	-198.0	-183.8	310.0	289.7	20.32	15.259		
4,400.0	4,355.8	4,375.0	4,359.2	14.2	10.8	159.16	-200.1	-185.5	323.1	302.3	20.71	15.598		
4,500.0	4,454.4	4,470.2	4,454.4	14.5	11.0	160.08	-200.3	-185.7	338.2	317.1	21.09	16.035		
4,600.0	4,553.1	4,568.9	4,553.1	14.9	11.1	160.98	-200.3	-185.7	353.6	332.1	21.47	16.467		
4,700.0	4,651.7	4,667.5	4,651.7	15.3	11.3	161.80	-200.3	-185.7	369.1	347.3	21.86	16.883		
4,800.0	4,750.4	4,766.2	4,750.4	15.7	11.5	162.56	-200.3	-185.7	384.7	362.5	22.26	17.283		
4,900.0	4,849.0	4,864.8	4,849.0	16.1	11.6	163.26	-200.3	-185.7	400.4	377.7	22.66	17.667		
5,000.0	4,947.7	4,963.5	4,947.7	16.5	11.8	163.91	-200.3	-185.7	416.1	393.0	23.07	18.037		

Company:	Synergy Resources	Local Co-ordinate Reference:	Well SRC Wiedeman 22-5-4NBHZ
Project:	Sec.5-T5N-R66W	TVD Reference:	WELL @ 4796.0ft (RKB - 13')
Reference Site:	SRC Wiedeman Pad Sec.5-T5N-R66W	MD Reference:	WELL @ 4796.0ft (RKB - 13')
Site Error:	0.0ft	North Reference:	True
Reference Well:	SRC Wiedeman 22-5-4NBHZ	Survey Calculation Method:	Minimum Curvature
Well Error:	0.0ft	Output errors are at	2.00 sigma
Reference Wellbore	Wellbore #1	Database:	Landmark
Reference Design:	Plan #3 (9-24-14)	Offset TVD Reference:	Offset Datum

Offset Design SRC Wiedeman Pad Sec.5-T5N-R66W - SRC Wiedeman 12-5-4CHZ - Wellbore #1 - Plan #3 (9-24-14)													Offset Site Error:	0.0 ft
Survey Program: 0-MWD													Offset Well Error:	0.0 ft
Reference		Offset		Semi Major Axis			Distance							Warning
Measured Depth (ft)	Vertical Depth (ft)	Measured Depth (ft)	Vertical Depth (ft)	Reference (ft)	Offset (ft)	Highside Toolface (°)	Offset Wellbore Centre +N/-S (ft)	+E/-W (ft)	Between Centres (ft)	Between Ellipses (ft)	Minimum Separation (ft)	Separation Factor		
5,100.0	5,046.3	5,062.1	5,046.3	16.8	12.0	164.51	-200.3	-185.7	431.8	408.4	23.48	18.393		
5,200.0	5,145.0	5,160.8	5,145.0	17.2	12.2	165.07	-200.3	-185.7	447.6	423.7	23.89	18.735		
5,287.7	5,231.5	5,247.3	5,231.5	17.6	12.3	165.53	-200.3	-185.7	461.5	437.2	24.26	19.024		
5,300.0	5,243.6	5,259.4	5,243.6	17.6	12.4	165.60	-200.3	-185.7	463.4	439.1	24.31	19.061		
5,400.0	5,342.6	5,358.4	5,342.6	17.9	12.5	166.09	-200.3	-185.7	477.2	452.5	24.71	19.309		
5,500.0	5,442.0	5,457.8	5,442.0	18.1	12.7	166.44	-200.3	-185.7	487.7	462.6	25.10	19.431		
5,600.0	5,541.8	5,557.6	5,541.8	18.3	12.9	166.67	-200.3	-185.7	494.7	469.3	25.46	19.434		
5,700.0	5,641.7	5,657.5	5,641.7	18.4	13.1	166.79	-200.3	-185.7	498.4	472.6	25.79	19.325		
5,758.3	5,700.0	5,715.8	5,700.0	18.5	13.2	5.00	-200.3	-185.7	499.0	467.8	31.17	16.006		
5,800.0	5,741.7	5,757.5	5,741.7	18.6	13.3	5.00	-200.3	-185.7	499.0	467.7	31.31	15.936		
5,900.0	5,841.7	5,857.5	5,841.7	18.7	13.5	5.00	-200.3	-185.7	499.0	467.3	31.63	15.777		
6,000.0	5,941.7	5,957.5	5,941.7	18.8	13.7	5.00	-200.3	-185.7	499.0	467.0	31.95	15.619		
6,100.0	6,041.7	6,057.5	6,041.7	18.9	13.9	5.00	-200.3	-185.7	499.0	466.7	32.27	15.464		
6,200.0	6,141.7	6,157.5	6,141.7	19.1	14.1	5.00	-200.3	-185.7	499.0	466.4	32.59	15.310		
6,300.0	6,241.7	6,257.5	6,241.7	19.2	14.3	5.00	-200.3	-185.7	499.0	466.1	32.92	15.158		
6,393.3	6,335.0	6,350.8	6,335.0	19.3	14.4	5.00	-200.3	-185.7	499.0	465.8	33.23	15.018		
6,400.0	6,341.7	6,357.2	6,341.4	19.3	14.5	-84.13	-200.3	-185.7	499.0	470.6	28.41	17.563		
6,450.0	6,391.6	6,403.8	6,388.0	19.4	14.5	-84.16	-200.3	-183.9	498.9	470.4	28.57	17.465		
6,500.0	6,441.3	6,450.0	6,433.9	19.4	14.6	-84.22	-200.2	-179.1	498.9	470.2	28.70	17.382		
6,550.0	6,490.4	6,497.3	6,480.5	19.5	14.7	-84.30	-200.1	-171.1	498.8	470.0	28.82	17.309		
6,600.0	6,538.8	6,544.1	6,526.0	19.5	14.7	-84.41	-199.9	-160.3	498.7	469.8	28.92	17.245		
6,650.0	6,586.2	6,590.9	6,570.7	19.5	14.8	-84.54	-199.7	-146.4	498.6	469.6	29.01	17.186		
6,700.0	6,632.4	6,637.8	6,614.6	19.5	14.8	-84.70	-199.5	-129.6	498.5	469.4	29.11	17.126		
6,750.0	6,677.1	6,684.8	6,657.3	19.5	14.8	-84.89	-199.2	-110.0	498.3	469.1	29.21	17.061		
6,800.0	6,720.2	6,732.0	6,698.7	19.5	14.9	-85.10	-198.8	-87.6	498.2	468.8	29.34	16.982		
6,850.0	6,761.4	6,779.2	6,738.6	19.5	14.9	-85.33	-198.5	-62.4	498.0	468.5	29.50	16.882		
6,900.0	6,800.5	6,826.5	6,776.9	19.5	14.9	-85.58	-198.0	-34.6	497.8	468.1	29.72	16.752		
6,950.0	6,837.3	6,874.0	6,813.3	19.5	15.0	-85.85	-197.6	-4.2	497.7	467.6	30.01	16.582		
7,000.0	6,871.7	6,921.6	6,847.8	19.6	15.0	-86.15	-197.1	28.7	497.5	467.1	30.40	16.364		
7,050.0	6,903.5	6,969.4	6,880.1	19.6	15.2	-86.46	-196.5	63.9	497.3	466.4	30.91	16.090		
7,100.0	6,932.5	7,017.4	6,910.1	19.6	15.5	-86.79	-196.0	101.2	497.1	465.6	31.55	15.759		
7,150.0	6,958.6	7,065.5	6,937.7	19.7	15.8	-87.13	-195.4	140.7	497.0	464.6	32.33	15.370		
7,200.0	6,981.6	7,113.8	6,962.6	19.7	16.3	-87.49	-194.8	182.1	496.8	463.5	33.28	14.927		
7,250.0	7,001.5	7,162.3	6,984.7	19.9	16.8	-87.86	-194.1	225.3	496.7	462.3	34.40	14.439		
7,300.0	7,018.2	7,211.1	7,004.0	20.1	17.5	-88.24	-193.4	270.0	496.6	460.9	35.68	13.918		
7,350.0	7,031.5	7,260.0	7,020.2	20.5	18.2	-88.64	-192.7	316.2	496.5	459.3	37.12	13.374		
7,400.0	7,041.4	7,309.2	7,033.3	21.1	19.0	-89.03	-192.0	363.6	496.4	457.7	38.71	12.822		
7,450.0	7,047.9	7,358.6	7,043.1	21.8	19.8	-89.44	-191.3	412.0	496.3	455.9	40.44	12.273		
7,493.3	7,050.8	7,401.6	7,049.0	22.5	20.6	-89.79	-190.6	454.6	496.3	454.3	42.03	11.809		
7,500.0	7,051.0	7,408.3	7,049.6	22.6	20.7	-89.84	-190.5	461.2	496.3	454.0	42.28	11.738		
7,582.4	7,053.7	7,490.6	7,053.0	24.1	22.3	-89.92	-189.3	543.4	496.3	450.8	45.52	10.903		
7,600.0	7,054.2	7,508.2	7,053.0	24.5	22.7	-89.86	-189.0	561.0	496.3	450.1	46.23	10.736		
7,700.0	7,056.8	7,608.2	7,053.0	26.5	24.8	-89.56	-187.5	661.0	496.3	445.9	50.46	9.835		
7,800.0	7,059.0	7,708.2	7,053.0	28.7	27.0	-89.31	-186.0	761.0	496.3	441.4	54.94	9.034		
7,859.6	7,060.0	7,767.8	7,053.0	30.1	28.4	-89.19	-185.1	820.6	496.3	438.6	57.72	8.600		
7,859.9	7,060.0	7,768.1	7,053.0	30.1	28.4	-89.19	-185.1	820.8	496.3	438.6	57.73	8.598		
7,900.0	7,060.6	7,808.2	7,053.0	31.0	29.4	-89.12	-184.5	860.9	496.3	436.7	59.61	8.327		
8,000.0	7,062.2	7,908.1	7,053.0	33.4	31.8	-88.94	-183.0	960.9	496.4	431.9	64.43	7.704		
8,100.0	7,063.8	8,008.1	7,053.0	35.8	34.3	-88.76	-181.5	1,060.9	496.4	427.0	69.37	7.156		
8,200.0	7,065.3	8,108.1	7,053.0	38.3	36.8	-88.58	-180.0	1,160.9	496.4	422.0	74.40	6.673		
8,300.0	7,066.9	8,208.1	7,053.0	40.8	39.3	-88.40	-178.5	1,260.8	496.4	416.9	79.50	6.244		
8,400.0	7,068.4	8,308.1	7,053.0	43.4	41.9	-88.22	-176.9	1,360.8	496.5	411.8	84.67	5.864		

CC - Min centre to center distance or convergent point, SF - min separation factor, ES - min ellipse separation

Offset Design SRC Wiedeman Pad Sec.5-T5N-R66W - SRC Wiedeman 12-5-4CHZ - Wellbore #1 - Plan #3 (9-24-14)													Offset Site Error: 0.0 ft	
Survey Program: 0-MWD													Offset Well Error: 0.0 ft	
Reference		Offset		Semi Major Axis			Distance							
Measured Depth (ft)	Vertical Depth (ft)	Measured Depth (ft)	Vertical Depth (ft)	Reference (ft)	Offset (ft)	Highside Toolface (°)	Offset Wellbore Centre +N/-S (ft)	+E/-W (ft)	Between Centres (ft)	Between Ellipses (ft)	Minimum Separation (ft)	Separation Factor	Warning	
8,500.1	7,070.0	8,408.2	7,053.0	46.0	44.6	-88.04	-175.4	1,460.9	496.5	406.6	89.89	5.524		
8,545.9	7,070.3	8,454.0	7,053.0	47.2	45.8	-88.00	-174.7	1,506.7	496.5	404.2	92.29	5.380		
8,600.0	7,070.3	8,508.1	7,053.0	48.6	47.2	-88.00	-173.9	1,560.8	496.5	401.4	95.15	5.219		
8,700.0	7,070.3	8,608.1	7,053.0	51.2	49.8	-88.00	-172.4	1,660.8	496.5	396.1	100.45	4.943		
8,800.0	7,070.3	8,708.1	7,053.0	53.9	52.5	-88.01	-170.9	1,760.8	496.5	390.7	105.79	4.693		
8,900.0	7,070.2	8,808.1	7,053.0	56.5	55.2	-88.01	-169.4	1,860.7	496.5	385.3	111.16	4.467		
9,000.0	7,070.2	8,908.1	7,053.0	59.2	57.9	-88.02	-167.9	1,960.7	496.5	379.9	116.55	4.260		
9,100.0	7,070.1	9,008.1	7,053.0	61.9	60.6	-88.02	-166.4	2,060.7	496.5	374.5	121.95	4.071		
9,200.0	7,070.1	9,108.1	7,053.0	64.6	63.3	-88.03	-164.8	2,160.7	496.5	369.1	127.38	3.898		
9,300.0	7,070.1	9,208.1	7,053.0	67.3	66.0	-88.03	-163.3	2,260.7	496.5	363.6	132.82	3.738		
9,400.0	7,070.0	9,308.1	7,053.0	70.0	68.8	-88.03	-161.8	2,360.7	496.4	358.2	138.27	3.590		
9,500.1	7,070.0	9,408.2	7,053.0	72.7	71.5	-88.04	-160.3	2,460.8	496.4	352.7	143.75	3.454		
9,506.4	7,070.0	9,414.5	7,053.0	72.9	71.7	-88.04	-160.2	2,467.1	496.4	352.3	144.09	3.445		
9,530.3	7,070.1	9,438.4	7,053.0	73.5	72.3	-88.02	-159.9	2,490.9	496.4	351.0	145.40	3.414		
9,600.0	7,070.9	9,508.1	7,053.0	75.4	74.2	-87.94	-158.8	2,560.7	496.5	347.3	149.20	3.327		
9,700.0	7,071.9	9,608.1	7,053.0	78.2	77.0	-87.82	-157.3	2,660.6	496.5	341.8	154.68	3.210		
9,800.0	7,072.9	9,708.1	7,053.0	80.9	79.7	-87.70	-155.8	2,760.6	496.5	336.4	160.15	3.100		
9,900.0	7,073.9	9,808.1	7,053.0	83.7	82.5	-87.59	-154.3	2,860.6	496.6	331.0	165.64	2.998		
10,000.0	7,074.9	9,908.1	7,053.0	86.4	85.2	-87.47	-152.8	2,960.6	496.6	325.5	171.13	2.902		
10,100.0	7,075.9	10,008.1	7,053.0	89.2	88.0	-87.35	-151.2	3,060.6	496.7	320.1	176.63	2.812		
10,200.0	7,077.0	10,108.0	7,053.0	91.9	90.8	-87.24	-149.7	3,160.6	496.7	314.6	182.13	2.727		
10,300.0	7,078.0	10,208.0	7,053.0	94.7	93.5	-87.12	-148.2	3,260.5	496.8	309.2	187.63	2.648		
10,400.0	7,079.0	10,308.0	7,053.0	97.4	96.3	-87.00	-146.7	3,360.5	496.8	303.7	193.13	2.573		
10,500.1	7,080.0	10,408.1	7,053.0	100.2	99.1	-86.89	-145.2	3,460.6	496.9	298.2	198.65	2.501		
10,529.6	7,080.1	10,437.6	7,053.0	101.0	99.9	-86.87	-144.8	3,490.1	496.9	296.6	200.27	2.481		
10,600.0	7,080.1	10,508.0	7,053.0	103.0	101.8	-86.87	-143.7	3,560.5	496.9	292.7	204.17	2.434		
10,700.0	7,080.1	10,608.0	7,053.0	105.7	104.6	-86.87	-142.2	3,660.5	496.9	287.2	209.71	2.369		
10,800.0	7,080.1	10,708.0	7,053.0	108.5	107.4	-86.87	-140.7	3,760.5	496.9	281.6	215.25	2.308		
10,900.0	7,080.1	10,808.0	7,053.0	111.3	110.2	-86.87	-139.2	3,860.5	496.9	276.1	220.79	2.250		
11,000.0	7,080.1	10,908.0	7,053.0	114.0	112.9	-86.88	-137.6	3,960.5	496.8	270.5	226.34	2.195		
11,100.0	7,080.1	11,008.0	7,053.0	116.8	115.7	-86.88	-136.1	4,060.4	496.8	264.9	231.89	2.143		
11,200.0	7,080.1	11,108.0	7,053.0	119.6	118.5	-86.88	-134.6	4,160.4	496.8	259.4	237.44	2.092		
11,300.0	7,080.0	11,208.0	7,053.0	122.3	121.3	-86.88	-133.1	4,260.4	496.8	253.8	243.00	2.045		
11,400.0	7,080.0	11,308.0	7,053.0	125.1	124.1	-86.88	-131.6	4,360.4	496.8	248.2	248.56	1.999		
11,500.0	7,080.0	11,408.0	7,053.0	127.9	126.8	-86.88	-130.1	4,460.4	496.8	242.7	254.12	1.955		
11,600.0	7,080.0	11,508.0	7,053.0	130.7	129.6	-86.88	-128.6	4,560.4	496.8	237.1	259.68	1.913		
11,630.6	7,080.0	11,538.6	7,053.0	131.5	130.5	-86.88	-128.1	4,591.0	496.8	235.4	261.38	1.901	SF	

Company:	Synergy Resources	Local Co-ordinate Reference:	Well SRC Wiedeman 22-5-4NBHZ
Project:	Sec.5-T5N-R66W	TVD Reference:	WELL @ 4796.0ft (RKB - 13')
Reference Site:	SRC Wiedeman Pad Sec.5-T5N-R66W	MD Reference:	WELL @ 4796.0ft (RKB - 13')
Site Error:	0.0ft	North Reference:	True
Reference Well:	SRC Wiedeman 22-5-4NBHZ	Survey Calculation Method:	Minimum Curvature
Well Error:	0.0ft	Output errors are at	2.00 sigma
Reference Wellbore	Wellbore #1	Database:	Landmark
Reference Design:	Plan #3 (9-24-14)	Offset TVD Reference:	Offset Datum

Offset Design												Offset Site Error:	0.0 ft
Survey Program: 0-MWD												Offset Well Error:	0.0 ft
Reference		Offset		Semi Major Axis			Distance						
Measured Depth (ft)	Vertical Depth (ft)	Measured Depth (ft)	Vertical Depth (ft)	Reference (ft)	Offset (ft)	Highside Toolface (°)	Offset Wellbore Centre +N/-S (ft)	+E/-W (ft)	Between Centres (ft)	Between Ellipses (ft)	Minimum Separation (ft)	Separation Factor	Warning
0.0	0.0	0.0	0.0	0.0	0.0	5.32	14.9	1.4	15.0	15.0	0.00	N/A	
100.0	100.0	100.0	100.0	0.1	0.1	5.32	14.9	1.4	15.0	14.8	0.22	66.761	
200.0	200.0	200.0	200.0	0.3	0.3	5.32	14.9	1.4	15.0	14.3	0.67	22.254	
300.0	300.0	300.0	300.0	0.6	0.6	5.32	14.9	1.4	15.0	13.9	1.12	13.352	
400.0	400.0	400.0	400.0	0.8	0.8	5.32	14.9	1.4	15.0	13.4	1.57	9.537	
500.0	500.0	500.0	500.0	1.0	1.0	5.32	14.9	1.4	15.0	13.0	2.02	7.418	
600.0	600.0	600.0	600.0	1.2	1.2	5.32	14.9	1.4	15.0	12.5	2.47	6.069	
700.0	700.0	700.0	700.0	1.5	1.5	5.32	14.9	1.4	15.0	12.1	2.92	5.135	
800.0	800.0	800.0	800.0	1.7	1.7	5.32	14.9	1.4	15.0	11.6	3.37	4.451 CC, ES	
900.0	900.0	900.0	900.0	1.9	1.9	168.46	14.9	1.4	16.7	12.9	3.79	4.405	
1,000.0	999.8	999.8	999.8	2.1	2.1	171.19	14.9	1.4	21.9	17.7	4.20	5.211	
1,100.0	1,099.5	1,100.5	1,100.4	2.3	2.3	172.87	13.4	0.6	28.8	24.2	4.58	6.298	
1,200.0	1,198.7	1,201.3	1,201.1	2.5	2.5	173.16	8.6	-1.7	35.8	30.9	4.94	7.259	
1,270.6	1,268.5	1,272.7	1,272.3	2.7	2.7	172.93	3.2	-4.2	40.8	35.6	5.20	7.849	
1,300.0	1,297.5	1,302.4	1,301.8	2.8	2.7	172.73	0.6	-5.5	42.8	37.4	5.32	8.042	
1,400.0	1,396.1	1,403.1	1,401.8	3.0	2.9	171.58	-10.3	-10.7	47.5	41.7	5.73	8.289	
1,500.0	1,494.8	1,503.0	1,501.0	3.4	3.2	170.46	-21.5	-16.1	51.7	45.5	6.16	8.397	
1,600.0	1,593.5	1,602.9	1,600.1	3.7	3.4	169.52	-32.8	-21.5	55.9	49.3	6.60	8.477	
1,700.0	1,692.1	1,702.8	1,699.2	4.0	3.7	168.71	-44.0	-26.9	60.2	53.1	7.05	8.534	
1,800.0	1,790.8	1,802.8	1,798.3	4.4	4.0	168.00	-55.3	-32.2	64.4	56.9	7.51	8.575	
1,900.0	1,889.4	1,902.7	1,897.5	4.7	4.3	167.39	-66.5	-37.6	68.7	60.7	7.99	8.604	
2,000.0	1,988.1	2,002.6	1,996.6	5.1	4.5	166.84	-77.8	-43.0	73.0	64.5	8.46	8.623	
2,100.0	2,086.7	2,102.5	2,095.7	5.4	4.8	166.36	-89.0	-48.4	77.3	68.3	8.95	8.635	
2,200.0	2,185.4	2,202.4	2,194.8	5.8	5.1	165.92	-100.2	-53.8	81.5	72.1	9.44	8.641	
2,300.0	2,284.0	2,302.3	2,294.0	6.2	5.4	165.53	-111.5	-59.2	85.8	75.9	9.93	8.643	
2,400.0	2,382.7	2,402.2	2,393.1	6.5	5.7	165.18	-122.7	-64.6	90.1	79.7	10.43	8.642	
2,500.0	2,481.3	2,502.1	2,492.2	6.9	6.1	164.86	-134.0	-70.0	94.4	83.5	10.93	8.639	
2,600.0	2,580.0	2,602.0	2,591.3	7.3	6.4	164.57	-145.2	-75.4	98.7	87.3	11.43	8.633	
2,700.0	2,678.6	2,701.9	2,690.5	7.7	6.7	164.30	-156.5	-80.7	103.0	91.1	11.94	8.627	
2,800.0	2,777.3	2,801.8	2,789.6	8.0	7.0	164.05	-167.7	-86.1	107.3	94.9	12.45	8.619	
2,900.0	2,875.9	2,901.7	2,888.7	8.4	7.3	163.82	-179.0	-91.5	111.6	98.7	12.96	8.611	
3,000.0	2,974.6	3,001.6	2,987.8	8.8	7.6	163.61	-190.2	-96.9	115.9	102.5	13.48	8.602	
3,100.0	3,073.3	3,101.5	3,087.0	9.2	7.9	163.42	-201.4	-102.3	120.2	106.3	13.99	8.593	
3,200.0	3,171.9	3,201.4	3,186.1	9.6	8.3	163.24	-212.7	-107.7	124.6	110.0	14.51	8.583	
3,300.0	3,270.6	3,301.4	3,285.2	9.9	8.6	163.07	-223.9	-113.1	128.9	113.8	15.03	8.574	
3,400.0	3,369.2	3,401.3	3,384.4	10.3	8.9	162.91	-235.2	-118.5	133.2	117.6	15.55	8.564	
3,500.0	3,467.9	3,501.2	3,483.5	10.7	9.2	162.76	-246.4	-123.8	137.5	121.4	16.07	8.555	
3,600.0	3,566.5	3,601.1	3,582.6	11.1	9.6	162.62	-257.7	-129.2	141.8	125.2	16.59	8.546	
3,700.0	3,665.2	3,701.0	3,681.7	11.5	9.9	162.48	-268.9	-134.6	146.1	129.0	17.12	8.536	
3,800.0	3,763.8	3,800.9	3,780.9	11.8	10.2	162.36	-280.2	-140.0	150.4	132.8	17.64	8.527	
3,900.0	3,862.5	3,900.8	3,880.0	12.2	10.5	162.24	-291.4	-145.4	154.7	136.6	18.17	8.518	
4,000.0	3,961.1	4,000.7	3,979.1	12.6	10.9	162.13	-302.6	-150.8	159.1	140.4	18.69	8.510	
4,100.0	4,059.8	4,100.6	4,078.2	13.0	11.2	162.03	-313.9	-156.2	163.4	144.2	19.22	8.501	
4,200.0	4,158.4	4,200.5	4,177.4	13.4	11.5	161.93	-325.1	-161.6	167.7	148.0	19.75	8.493	
4,300.0	4,257.1	4,300.4	4,276.5	13.8	11.8	161.83	-336.4	-167.0	172.0	151.7	20.27	8.484	
4,400.0	4,355.8	4,400.3	4,375.6	14.2	12.2	161.74	-347.6	-172.3	176.3	155.5	20.80	8.477	
4,500.0	4,454.4	4,500.2	4,474.7	14.5	12.5	161.66	-358.9	-177.7	180.7	159.3	21.33	8.469	
4,600.0	4,553.1	4,600.1	4,573.9	14.9	12.8	161.58	-370.1	-183.1	185.0	163.1	21.86	8.461	
4,700.0	4,651.7	4,700.0	4,673.0	15.3	13.1	161.50	-381.4	-188.5	189.3	166.9	22.39	8.454	
4,800.0	4,750.4	4,799.9	4,772.1	15.7	13.5	161.42	-392.6	-193.9	193.6	170.7	22.92	8.447	
4,900.0	4,849.0	4,898.2	4,869.6	16.1	13.8	161.37	-403.5	-199.1	198.1	174.6	23.44	8.450	
5,000.0	4,947.7	4,992.0	4,962.9	16.5	14.0	161.60	-411.9	-203.2	204.7	180.8	23.87	8.574	

CC - Min centre to center distance or convergent point, SF - min separation factor, ES - min ellipse separation

Company:	Synergy Resources	Local Co-ordinate Reference:	Well SRC Wiedeman 22-5-4NBHZ
Project:	Sec.5-T5N-R66W	TVD Reference:	WELL @ 4796.0ft (RKB - 13')
Reference Site:	SRC Wiedeman Pad Sec.5-T5N-R66W	MD Reference:	WELL @ 4796.0ft (RKB - 13')
Site Error:	0.0ft	North Reference:	True
Reference Well:	SRC Wiedeman 22-5-4NBHZ	Survey Calculation Method:	Minimum Curvature
Well Error:	0.0ft	Output errors are at	2.00 sigma
Reference Wellbore	Wellbore #1	Database:	Landmark
Reference Design:	Plan #3 (9-24-14)	Offset TVD Reference:	Offset Datum

Offset Design												Offset Site Error:	0.0 ft
Survey Program: 0-MWD												Offset Well Error:	0.0 ft
Reference		Offset		Semi Major Axis			Distance						Warning
Measured Depth (ft)	Vertical Depth (ft)	Measured Depth (ft)	Vertical Depth (ft)	Reference (ft)	Offset (ft)	Highside Toolface (°)	Offset Wellbore Centre +N/-S (ft)	+E/-W (ft)	Between Centres (ft)	Between Ellipses (ft)	Minimum Separation (ft)	Separation Factor	
5,100.0	5,046.3	5,085.4	5,056.1	16.8	14.2	162.18	-417.5	-205.8	214.3	190.0	24.27	8.832	
5,200.0	5,145.0	5,178.0	5,148.7	17.2	14.3	163.02	-420.4	-207.2	226.9	202.2	24.62	9.215	
5,287.7	5,231.5	5,260.8	5,231.5	17.6	14.4	163.93	-420.8	-207.4	240.2	215.3	24.92	9.639	
5,300.0	5,243.6	5,273.0	5,243.6	17.6	14.5	164.07	-420.8	-207.4	242.1	217.1	24.96	9.699	
5,400.0	5,342.6	5,372.0	5,342.6	17.9	14.6	165.02	-420.8	-207.4	255.8	230.5	25.28	10.119	
5,500.0	5,442.0	5,471.4	5,442.0	18.1	14.8	165.66	-420.8	-207.4	266.2	240.6	25.59	10.401	
5,600.0	5,541.8	5,571.1	5,541.8	18.3	14.9	166.08	-420.8	-207.4	273.2	247.3	25.90	10.550	
5,700.0	5,641.7	5,671.0	5,641.7	18.4	15.1	166.28	-420.8	-207.4	276.9	250.7	26.19	10.573	
5,758.3	5,700.0	5,729.3	5,700.0	18.5	15.1	4.51	-420.8	-207.4	277.5	244.3	33.14	8.373	
5,800.0	5,741.7	5,771.0	5,741.7	18.6	15.2	4.51	-420.8	-207.4	277.5	244.2	33.26	8.342	
5,900.0	5,841.7	5,871.0	5,841.7	18.7	15.4	4.51	-420.8	-207.4	277.5	243.9	33.54	8.273	
6,000.0	5,941.7	5,971.0	5,941.7	18.8	15.5	4.51	-420.8	-207.4	277.5	243.6	33.82	8.204	
6,100.0	6,041.7	6,071.0	6,041.7	18.9	15.7	4.51	-420.8	-207.4	277.5	243.4	34.10	8.136	
6,200.0	6,141.7	6,171.0	6,141.7	19.1	15.8	4.51	-420.8	-207.4	277.5	243.1	34.39	8.068	
6,300.0	6,241.7	6,271.0	6,241.7	19.2	16.0	4.51	-420.8	-207.4	277.5	242.8	34.68	8.000	
6,393.3	6,335.0	6,364.3	6,335.0	19.3	16.1	4.51	-420.8	-207.4	277.5	242.5	34.96	7.937	
6,400.0	6,341.7	6,371.0	6,341.7	19.3	16.2	-84.63	-420.8	-207.4	277.5	248.8	28.68	9.676	
6,450.0	6,391.6	6,421.0	6,391.6	19.4	16.2	-85.10	-420.8	-207.4	277.3	248.4	28.88	9.602	
6,500.0	6,441.3	6,470.6	6,441.3	19.4	16.3	-86.30	-420.8	-207.4	276.8	247.7	29.13	9.504	
6,550.0	6,490.4	6,519.8	6,490.4	19.5	16.4	-88.19	-420.8	-207.4	276.4	247.0	29.44	9.389	
6,588.0	6,527.3	6,556.7	6,527.3	19.5	16.5	-90.00	-420.8	-207.1	276.2	246.5	29.70	9.300	
6,600.0	6,538.8	6,568.3	6,539.0	19.5	16.5	-90.58	-420.8	-206.7	276.3	246.5	29.79	9.275	
6,650.0	6,586.2	6,617.4	6,587.9	19.5	16.5	-93.02	-420.7	-202.8	276.7	246.5	30.12	9.186	
6,700.0	6,632.4	6,667.4	6,637.3	19.5	16.6	-95.44	-420.6	-195.4	277.6	247.2	30.41	9.128	
6,750.0	6,677.1	6,718.3	6,687.0	19.5	16.6	-97.85	-420.4	-184.4	279.0	248.4	30.66	9.101	
6,800.0	6,720.2	6,770.1	6,736.6	19.5	16.7	-100.21	-420.2	-169.5	281.0	250.1	30.85	9.107	
6,850.0	6,761.4	6,822.9	6,786.0	19.5	16.7	-102.52	-419.9	-150.8	283.4	252.4	30.99	9.143	
6,900.0	6,800.5	6,876.7	6,834.7	19.5	16.7	-104.75	-419.6	-127.9	286.2	255.1	31.08	9.208	
6,950.0	6,837.3	6,931.6	6,882.4	19.5	16.8	-106.89	-419.2	-101.0	289.3	258.2	31.13	9.293	
7,000.0	6,871.7	6,987.5	6,928.9	19.6	16.8	-108.93	-418.7	-69.8	292.8	261.6	31.18	9.391	
7,050.0	6,903.5	7,044.5	6,973.6	19.6	16.8	-110.86	-418.2	-34.4	296.4	265.2	31.24	9.489	
7,100.0	6,932.5	7,102.7	7,016.1	19.6	16.8	-112.66	-417.6	5.2	300.2	268.8	31.36	9.573	
7,150.0	6,958.6	7,161.9	7,055.9	19.7	16.8	-114.32	-416.9	49.0	304.0	272.4	31.58	9.627	
7,200.0	6,981.6	7,222.2	7,092.6	19.7	16.9	-115.84	-416.2	96.8	307.8	275.8	31.97	9.626	
7,250.0	7,001.5	7,283.5	7,125.7	19.9	17.0	-117.21	-415.4	148.4	311.4	278.9	32.51	9.577	
7,300.0	7,018.2	7,345.8	7,154.7	20.1	17.4	-118.43	-414.6	203.5	314.8	281.5	33.28	9.458	
7,350.0	7,031.5	7,409.0	7,179.1	20.5	18.1	-119.48	-413.7	261.8	317.8	283.5	34.30	9.265	
7,400.0	7,041.4	7,473.0	7,198.4	21.1	19.0	-120.36	-412.8	322.8	320.5	284.9	35.58	9.008	
7,450.0	7,047.9	7,537.7	7,212.4	21.8	20.1	-121.07	-411.8	385.9	322.7	285.6	37.10	8.698	
7,493.3	7,050.8	7,594.2	7,219.9	22.5	21.1	-121.55	-411.0	441.9	324.3	285.6	38.62	8.397	
7,500.0	7,051.0	7,603.0	7,220.6	22.6	21.2	-121.61	-410.8	450.6	324.4	285.6	38.84	8.353	
7,600.0	7,054.2	7,716.8	7,223.0	24.5	23.4	-121.42	-409.1	564.4	323.7	281.2	42.48	7.620	
7,700.0	7,056.8	7,816.8	7,223.0	26.5	25.6	-121.02	-407.6	664.3	322.3	276.1	46.24	6.970	
7,800.0	7,059.0	7,916.7	7,223.0	28.7	27.8	-120.70	-406.1	764.3	321.2	271.0	50.22	6.396	
7,859.6	7,060.0	7,976.4	7,223.0	30.1	29.2	-120.55	-405.2	823.9	320.7	268.0	52.67	6.088	
7,859.9	7,060.0	7,976.6	7,223.0	30.1	29.2	-120.55	-405.2	824.2	320.7	268.0	52.68	6.087	
7,900.0	7,060.6	8,016.7	7,223.0	31.0	30.1	-120.45	-404.6	864.3	320.4	266.0	54.35	5.895	
8,000.0	7,062.2	8,116.7	7,223.0	33.4	32.5	-120.21	-403.1	964.2	319.6	261.0	58.62	5.452	
8,100.0	7,063.8	8,216.7	7,223.0	35.8	35.0	-119.97	-401.6	1,064.2	318.8	255.8	63.01	5.059	
8,200.0	7,065.3	8,316.7	7,223.0	38.3	37.5	-119.72	-400.1	1,164.2	318.0	250.5	67.51	4.711	
8,300.0	7,066.9	8,416.7	7,223.0	40.8	40.0	-119.48	-398.5	1,264.2	317.2	245.1	72.09	4.400	
8,400.0	7,068.4	8,516.7	7,223.0	43.4	42.6	-119.24	-397.0	1,364.1	316.4	239.7	76.76	4.122	

CC - Min centre to center distance or convergent point, SF - min separation factor, ES - min ellipse separation

Company:	Synergy Resources	Local Co-ordinate Reference:	Well SRC Wiedeman 22-5-4NBHZ
Project:	Sec.5-T5N-R66W	TVD Reference:	WELL @ 4796.0ft (RKB - 13')
Reference Site:	SRC Wiedeman Pad Sec.5-T5N-R66W	MD Reference:	WELL @ 4796.0ft (RKB - 13')
Site Error:	0.0ft	North Reference:	True
Reference Well:	SRC Wiedeman 22-5-4NBHZ	Survey Calculation Method:	Minimum Curvature
Well Error:	0.0ft	Output errors are at	2.00 sigma
Reference Wellbore	Wellbore #1	Database:	Landmark
Reference Design:	Plan #3 (9-24-14)	Offset TVD Reference:	Offset Datum

Offset Design		SRC Wiedeman Pad Sec.5-T5N-R66W - SRC Wiedeman 12-5-4NCHZ - Wellbore #1 - Plan #3 (9-24-14)										Offset Site Error:		0.0 ft
Survey Program: 0-MWD												Offset Well Error:		0.0 ft
Reference		Offset		Semi Major Axis			Distance							Warning
Measured Depth (ft)	Vertical Depth (ft)	Measured Depth (ft)	Vertical Depth (ft)	Reference (ft)	Offset (ft)	Highside Toolface (°)	Offset Wellbore Centre +N/-S (ft)	+E/-W (ft)	Between Centres (ft)	Between Ellipses (ft)	Minimum Separation (ft)	Separation Factor		
8,500.1	7,070.0	8,616.8	7,223.0	46.0	45.2	-118.99	-395.5	1,464.2	315.7	234.2	81.50	3.873		
8,545.3	7,070.3	8,661.9	7,223.0	47.1	46.4	-118.94	-394.8	1,509.4	315.5	231.8	83.69	3.770		
8,545.9	7,070.3	8,662.5	7,223.0	47.2	46.4	-118.94	-394.8	1,510.0	315.5	231.8	83.72	3.768		
8,600.0	7,070.3	8,716.6	7,223.0	48.6	47.8	-118.94	-394.0	1,564.1	315.5	229.3	86.23	3.659		
8,700.0	7,070.3	8,816.6	7,223.0	51.2	50.5	-118.95	-392.5	1,664.1	315.5	224.6	90.89	3.472		
8,800.0	7,070.3	8,916.6	7,223.0	53.9	53.1	-118.95	-391.0	1,764.1	315.5	220.0	95.57	3.301		
8,900.0	7,070.2	9,016.6	7,223.0	56.5	55.8	-118.96	-389.5	1,864.1	315.5	215.3	100.29	3.146		
9,000.0	7,070.2	9,116.6	7,223.0	59.2	58.5	-118.97	-388.0	1,964.1	315.5	210.5	105.02	3.005		
9,100.0	7,070.1	9,216.6	7,223.0	61.9	61.2	-118.97	-386.4	2,064.1	315.6	205.8	109.77	2.875		
9,200.0	7,070.1	9,316.6	7,223.0	64.6	63.9	-118.98	-384.9	2,164.0	315.6	201.0	114.54	2.755		
9,300.0	7,070.1	9,416.6	7,223.0	67.3	66.6	-118.99	-383.4	2,264.0	315.6	196.3	119.32	2.645		
9,400.0	7,070.0	9,516.6	7,223.0	70.0	69.3	-118.99	-381.9	2,364.0	315.6	191.5	124.12	2.543		
9,500.1	7,070.0	9,616.8	7,223.0	72.7	72.1	-119.00	-380.4	2,464.1	315.6	186.7	128.93	2.448		
9,530.3	7,070.1	9,646.9	7,223.0	73.5	72.9	-118.97	-379.9	2,494.3	315.5	185.2	130.35	2.421		
9,600.0	7,070.9	9,716.6	7,223.0	75.4	74.8	-118.86	-378.9	2,564.0	315.2	181.3	133.84	2.355		
9,700.0	7,071.9	9,816.6	7,223.0	78.2	77.5	-118.70	-377.4	2,664.0	314.7	175.8	138.87	2.266		
9,800.0	7,072.9	9,916.6	7,223.0	80.9	80.3	-118.54	-375.9	2,764.0	314.2	170.3	143.91	2.183		
9,900.0	7,073.9	10,016.6	7,223.0	83.7	83.0	-118.37	-374.4	2,863.9	313.7	164.8	148.98	2.106		
10,000.0	7,074.9	10,116.6	7,223.0	86.4	85.8	-118.21	-372.8	2,963.9	313.3	159.2	154.07	2.033		
10,100.0	7,075.9	10,216.6	7,223.0	89.2	88.5	-118.05	-371.3	3,063.9	312.8	153.6	159.18	1.965		
10,200.0	7,077.0	10,316.6	7,223.0	91.9	91.3	-117.88	-369.8	3,163.9	312.3	148.0	164.31	1.901		
10,300.0	7,078.0	10,416.6	7,223.0	94.7	94.1	-117.72	-368.3	3,263.9	311.8	142.4	169.45	1.840		
10,400.0	7,079.0	10,516.6	7,223.0	97.4	96.8	-117.55	-366.8	3,363.9	311.4	136.7	174.62	1.783		
10,500.1	7,080.0	10,616.7	7,223.0	100.2	99.6	-117.38	-365.3	3,463.9	310.9	131.1	179.80	1.729		
10,529.6	7,080.1	10,646.2	7,223.0	101.0	100.4	-117.36	-364.8	3,493.4	310.8	129.5	181.34	1.714		
10,600.0	7,080.1	10,716.6	7,223.0	103.0	102.4	-117.36	-363.8	3,563.8	310.8	126.0	184.83	1.682		
10,700.0	7,080.1	10,816.6	7,223.0	105.7	105.1	-117.37	-362.3	3,663.8	310.8	121.0	189.78	1.638		
10,800.0	7,080.1	10,916.6	7,223.0	108.5	107.9	-117.37	-360.7	3,763.8	310.8	116.1	194.74	1.596		
10,900.0	7,080.1	11,016.6	7,223.0	111.3	110.7	-117.37	-359.2	3,863.8	310.8	111.1	199.70	1.556		
11,000.0	7,080.1	11,116.6	7,223.0	114.0	113.4	-117.38	-357.7	3,963.8	310.8	106.1	204.66	1.519		
11,100.0	7,080.1	11,216.6	7,223.0	116.8	116.2	-117.38	-356.2	4,063.8	310.8	101.2	209.62	1.483 Level 3		
11,200.0	7,080.1	11,316.6	7,223.0	119.6	119.0	-117.38	-354.7	4,163.8	310.8	96.2	214.59	1.448 Level 3		
11,300.0	7,080.0	11,416.6	7,223.0	122.3	121.8	-117.38	-353.2	4,263.8	310.8	91.2	219.56	1.416 Level 3		
11,400.0	7,080.0	11,516.6	7,223.0	125.1	124.6	-117.39	-351.7	4,363.7	310.8	86.3	224.53	1.384 Level 3		
11,500.0	7,080.0	11,616.6	7,223.0	127.9	127.3	-117.39	-350.2	4,463.7	310.8	81.3	229.50	1.354 Level 3		
11,600.0	7,080.0	11,716.6	7,223.0	130.7	130.0	-117.39	-348.7	4,563.7	310.8	76.5	234.32	1.326 Level 3		
11,630.6	7,080.0	11,747.2	7,223.0	131.5	130.5	-117.39	-348.2	4,594.3	310.8	75.2	235.57	1.319 Level 3, SF		

Company:	Synergy Resources	Local Co-ordinate Reference:	Well SRC Wiedeman 22-5-4NBHZ
Project:	Sec.5-T5N-R66W	TVD Reference:	WELL @ 4796.0ft (RKB - 13')
Reference Site:	SRC Wiedeman Pad Sec.5-T5N-R66W	MD Reference:	WELL @ 4796.0ft (RKB - 13')
Site Error:	0.0ft	North Reference:	True
Reference Well:	SRC Wiedeman 22-5-4NBHZ	Survey Calculation Method:	Minimum Curvature
Well Error:	0.0ft	Output errors are at	2.00 sigma
Reference Wellbore	Wellbore #1	Database:	Landmark
Reference Design:	Plan #3 (9-24-14)	Offset TVD Reference:	Offset Datum

Offset Design SRC Wiedeman Pad Sec.5-T5N-R66W - SRC Wiedeman 21-5-3CHZ - Wellbore #1 - Plan #2 (9-24-14)													Offset Site Error:	0.0 ft
Survey Program: 0-MWD													Offset Well Error:	0.0 ft
Reference		Offset		Semi Major Axis			Distance							Warning
Measured Depth (ft)	Vertical Depth (ft)	Measured Depth (ft)	Vertical Depth (ft)	Reference (ft)	Offset (ft)	Highside Toolface (°)	Offset Wellbore Centre +N/-S (ft)	+E/-W (ft)	Between Centres (ft)	Between Ellipses (ft)	Minimum Separation (ft)	Separation Factor		
0.0	0.0	0.0	0.0	0.0	0.0	5.68	89.6	8.9	90.1					
100.0	100.0	100.0	100.0	0.1	0.1	5.68	89.6	8.9	90.1	89.8	0.22	400.696		
200.0	200.0	200.0	200.0	0.3	0.3	5.68	89.6	8.9	90.1	89.4	0.67	133.565		
300.0	300.0	300.0	300.0	0.6	0.6	5.68	89.6	8.9	90.1	88.9	1.12	80.139		
400.0	400.0	400.0	400.0	0.8	0.8	5.68	89.6	8.9	90.1	88.5	1.57	57.242		
500.0	500.0	500.0	500.0	1.0	1.0	5.68	89.6	8.9	90.1	88.0	2.02	44.522 CC, ES		
600.0	600.0	597.0	597.0	1.2	1.2	5.45	91.3	8.7	91.7	89.2	2.47	37.182		
700.0	700.0	693.7	693.6	1.5	1.5	4.83	96.1	8.1	96.7	93.8	2.91	33.168		
800.0	800.0	790.1	789.6	1.7	1.7	3.93	104.2	7.2	105.0	101.6	3.36	31.190		
900.0	900.0	885.5	884.4	1.9	1.9	164.84	115.3	5.8	118.2	114.4	3.80	31.103 SF		
1,000.0	999.8	981.9	979.7	2.1	2.2	164.27	129.2	4.1	137.5	133.3	4.22	32.587		
1,100.0	1,099.5	1,079.2	1,076.0	2.3	2.5	164.12	143.6	2.4	160.4	155.8	4.63	34.616		
1,200.0	1,198.7	1,175.7	1,171.4	2.5	2.8	164.26	157.8	0.7	186.6	181.5	5.05	36.941		
1,270.6	1,268.5	1,243.3	1,238.3	2.7	3.0	164.47	167.8	-0.5	207.0	201.6	5.34	38.724		
1,300.0	1,297.5	1,271.3	1,266.0	2.8	3.1	164.61	171.9	-1.0	215.8	210.3	5.47	39.443		
1,400.0	1,396.1	1,366.7	1,360.3	3.0	3.4	165.02	186.0	-2.7	245.9	240.0	5.91	41.616		
1,500.0	1,494.8	1,462.1	1,454.6	3.4	3.7	165.33	200.0	-4.4	275.9	269.6	6.36	43.414		
1,600.0	1,593.5	1,557.4	1,548.9	3.7	4.1	165.59	214.1	-6.1	306.0	299.2	6.81	44.956		
1,700.0	1,692.1	1,652.8	1,643.2	4.0	4.4	165.80	228.1	-7.8	336.1	328.8	7.26	46.264		
1,800.0	1,790.8	1,748.2	1,737.5	4.4	4.7	165.98	242.2	-9.5	366.2	358.5	7.73	47.389		
1,900.0	1,889.4	1,843.5	1,831.8	4.7	5.0	166.13	256.2	-11.2	396.3	388.1	8.19	48.364		
2,000.0	1,988.1	1,938.9	1,926.1	5.1	5.4	166.25	270.3	-12.9	426.4	417.7	8.66	49.218		
2,100.0	2,086.7	2,034.2	2,020.4	5.4	5.7	166.37	284.4	-14.6	456.5	447.3	9.13	49.969		
2,200.0	2,185.4	2,129.6	2,114.7	5.8	6.0	166.46	298.4	-16.3	486.5	476.9	9.61	50.635		
2,300.0	2,284.0	2,225.0	2,209.0	6.2	6.3	166.55	312.5	-17.9	516.6	506.6	10.09	51.228		
2,400.0	2,382.7	2,320.3	2,303.3	6.5	6.7	166.63	326.5	-19.6	546.7	536.2	10.56	51.760		
2,500.0	2,481.3	2,415.7	2,397.6	6.9	7.0	166.69	340.6	-21.3	576.8	565.8	11.04	52.240		
2,600.0	2,580.0	2,511.0	2,491.9	7.3	7.3	166.76	354.6	-23.0	606.9	595.4	11.52	52.673		
2,700.0	2,678.6	2,606.4	2,586.2	7.7	7.7	166.81	368.7	-24.7	637.0	625.0	12.00	53.067		
2,800.0	2,777.3	2,701.8	2,680.5	8.0	8.0	166.86	382.7	-26.4	667.1	654.6	12.49	53.426		
2,900.0	2,875.9	2,797.1	2,774.8	8.4	8.3	166.91	396.8	-28.1	697.2	684.3	12.97	53.755		
3,000.0	2,974.6	2,892.5	2,869.1	8.8	8.7	166.95	410.8	-29.8	727.3	713.9	13.45	54.057		
3,100.0	3,073.3	2,987.8	2,963.4	9.2	9.0	166.99	424.9	-31.5	757.4	743.5	13.94	54.336		
3,200.0	3,171.9	3,083.2	3,057.7	9.6	9.3	167.03	439.0	-33.2	787.5	773.1	14.43	54.593		
3,300.0	3,270.6	3,178.6	3,152.0	9.9	9.7	167.06	453.0	-34.9	817.6	802.7	14.91	54.831		
3,400.0	3,369.2	3,273.9	3,246.3	10.3	10.0	167.09	467.1	-36.6	847.7	832.3	15.40	55.052		
3,500.0	3,467.9	3,369.3	3,340.7	10.7	10.3	167.12	481.1	-38.3	877.8	861.9	15.89	55.258		
3,600.0	3,566.5	3,464.7	3,435.0	11.1	10.7	167.15	495.2	-40.0	907.9	891.6	16.37	55.450		
3,700.0	3,665.2	3,560.0	3,529.3	11.5	11.0	167.17	509.2	-41.7	938.0	921.2	16.86	55.630		
3,800.0	3,763.8	3,655.4	3,623.6	11.8	11.3	167.20	523.3	-43.4	968.1	950.8	17.35	55.798		
3,900.0	3,862.5	3,750.7	3,717.9	12.2	11.7	167.22	537.3	-45.0	998.2	980.4	17.84	55.956		

SRC Wiedeman Pad Sec.5-T5N-R66W - SRC Wiedeman 21-5-3NBHZ - Wellbore #1 - Plan #3 (9-24-14)													Offset Site Error:	0.0 ft
Survey Program: 0-MWD													Offset Well Error:	0.0 ft
Reference		Offset		Semi Major Axis			Distance							
Measured Depth	Vertical Depth	Measured Depth	Vertical Depth	Reference	Offset	Highside Toolface	Offset Wellbore Centre		Between Centres	Between Ellipses	Minimum Separation	Separation Factor	Warning	
(ft)	(ft)	(ft)	(ft)	(ft)	(ft)	(°)	+N/-S (ft)	+E/-W (ft)	(ft)	(ft)	(ft)			
0.0	0.0	0.0	0.0	0.0	0.0	5.54	74.7	7.2	75.0					
100.0	100.0	100.0	100.0	0.1	0.1	5.54	74.7	7.2	75.0	74.8	0.22	333.833		
200.0	200.0	200.0	200.0	0.3	0.3	5.54	74.7	7.2	75.0	74.4	0.67	111.278		
300.0	300.0	300.0	300.0	0.6	0.6	5.54	74.7	7.2	75.0	73.9	1.12	66.767		
400.0	400.0	400.0	400.0	0.8	0.8	5.54	74.7	7.2	75.0	73.5	1.57	47.690		
500.0	500.0	500.0	500.0	1.0	1.0	5.54	74.7	7.2	75.0	73.0	2.02	37.093		
600.0	600.0	600.0	600.0	1.2	1.2	5.54	74.7	7.2	75.0	72.6	2.47	30.348		
700.0	700.0	700.0	700.0	1.5	1.5	5.54	74.7	7.2	75.0	72.1	2.92	25.679		
800.0	800.0	800.0	800.0	1.7	1.7	5.54	74.7	7.2	75.0	71.7	3.37	22.256 CC, ES		
900.0	900.0	900.0	900.0	1.9	1.9	167.62	74.7	7.2	76.7	72.9	3.79	20.226		
1,000.0	999.8	999.8	999.8	2.1	2.1	168.39	74.7	7.2	81.9	77.7	4.20	19.509 SF		
1,100.0	1,099.5	1,096.6	1,096.5	2.3	2.4	169.08	76.3	6.9	92.0	87.4	4.60	19.996		
1,200.0	1,198.7	1,192.0	1,191.9	2.5	2.6	169.33	81.0	5.9	108.7	103.6	5.01	21.671		
1,270.6	1,268.5	1,258.4	1,258.0	2.7	2.7	169.31	86.1	4.7	124.3	119.0	5.31	23.417		
1,300.0	1,297.5	1,285.7	1,285.2	2.8	2.8	169.28	88.6	4.2	131.6	126.1	5.43	24.217		
1,400.0	1,396.1	1,377.7	1,376.6	3.0	3.0	168.96	99.0	1.9	158.3	152.4	5.86	26.987		
1,500.0	1,494.8	1,470.8	1,468.8	3.4	3.2	168.44	112.0	-1.0	187.5	181.2	6.31	29.723		
1,600.0	1,593.5	1,566.3	1,563.2	3.7	3.5	168.02	125.7	-4.0	217.1	210.3	6.75	32.152		
1,700.0	1,692.1	1,661.8	1,657.7	4.0	3.8	167.70	139.4	-7.0	246.7	239.5	7.20	34.250		
1,800.0	1,790.8	1,757.3	1,752.2	4.4	4.1	167.45	153.2	-10.0	276.3	268.7	7.66	36.077		
1,900.0	1,889.4	1,852.8	1,846.6	4.7	4.4	167.25	166.9	-13.0	305.9	297.8	8.12	37.655		
2,000.0	1,988.1	1,948.4	1,941.1	5.1	4.7	167.08	180.6	-16.0	335.5	327.0	8.59	39.067		
2,100.0	2,086.7	2,043.9	2,035.6	5.4	5.0	166.94	194.3	-19.1	365.2	356.1	9.06	40.310		
2,200.0	2,185.4	2,139.4	2,130.0	5.8	5.3	166.83	208.1	-22.1	394.8	385.3	9.53	41.416		
2,300.0	2,284.0	2,234.9	2,224.5	6.2	5.6	166.72	221.8	-25.1	424.4	414.4	10.01	42.407		
2,400.0	2,382.7	2,330.4	2,319.0	6.5	5.9	166.64	235.5	-28.1	454.0	443.6	10.49	43.299		
2,500.0	2,481.3	2,425.9	2,413.5	6.9	6.2	166.56	249.2	-31.1	483.7	472.7	10.97	44.104		
2,600.0	2,580.0	2,521.4	2,507.9	7.3	6.5	166.49	263.0	-34.1	513.3	501.8	11.45	44.835		
2,700.0	2,678.6	2,616.9	2,602.4	7.7	6.8	166.43	276.7	-37.2	542.9	531.0	11.93	45.502		
2,800.0	2,777.3	2,712.4	2,696.9	8.0	7.2	166.37	290.4	-40.2	572.5	560.1	12.42	46.111		
2,900.0	2,875.9	2,807.9	2,791.3	8.4	7.5	166.32	304.1	-43.2	602.2	589.3	12.90	46.670		
3,000.0	2,974.6	2,903.4	2,885.8	8.8	7.8	166.28	317.9	-46.2	631.8	618.4	13.39	47.185		
3,100.0	3,073.3	2,999.0	2,980.3	9.2	8.1	166.24	331.6	-49.2	661.4	647.6	13.88	47.660		
3,200.0	3,171.9	3,094.5	3,074.7	9.6	8.5	166.20	345.3	-52.2	691.1	676.7	14.37	48.099		
3,300.0	3,270.6	3,190.0	3,169.2	9.9	8.8	166.17	359.0	-55.3	720.7	705.8	14.86	48.508		
3,400.0	3,369.2	3,285.5	3,263.7	10.3	9.1	166.13	372.8	-58.3	750.3	735.0	15.35	48.887		
3,500.0	3,467.9	3,381.0	3,358.1	10.7	9.4	166.10	386.5	-61.3	779.9	764.1	15.84	49.242		
3,600.0	3,566.5	3,476.5	3,452.6	11.1	9.8	166.08	400.2	-64.3	809.6	793.2	16.33	49.572		
3,700.0	3,665.2	3,572.0	3,547.1	11.5	10.1	166.05	413.9	-67.3	839.2	822.4	16.82	49.882		
3,800.0	3,763.8	3,667.5	3,641.6	11.8	10.4	166.03	427.6	-70.3	868.8	851.5	17.32	50.173		
3,900.0	3,862.5	3,763.0	3,736.0	12.2	10.8	166.01	441.4	-73.4	898.5	880.7	17.81	50.446		
4,000.0	3,961.1	3,858.5	3,830.5	12.6	11.1	165.99	455.1	-76.4	928.1	909.8	18.30	50.703		
4,100.0	4,059.8	3,954.0	3,925.0	13.0	11.4	165.97	468.8	-79.4	957.7	938.9	18.80	50.946		
4,200.0	4,158.4	4,049.6	4,019.4	13.4	11.7	165.95	482.5	-82.4	987.4	968.1	19.29	51.175		

Company:	Synergy Resources	Local Co-ordinate Reference:	Well SRC Wiedeman 22-5-4NBHZ
Project:	Sec.5-T5N-R66W	TVD Reference:	WELL @ 4796.0ft (RKB - 13')
Reference Site:	SRC Wiedeman Pad Sec.5-T5N-R66W	MD Reference:	WELL @ 4796.0ft (RKB - 13')
Site Error:	0.0ft	North Reference:	True
Reference Well:	SRC Wiedeman 22-5-4NBHZ	Survey Calculation Method:	Minimum Curvature
Well Error:	0.0ft	Output errors are at	2.00 sigma
Reference Wellbore	Wellbore #1	Database:	Landmark
Reference Design:	Plan #3 (9-24-14)	Offset TVD Reference:	Offset Datum

Offset Design													Offset Site Error:	0.0ft
Survey Program: 39-MWD													Offset Well Error:	0.0ft
Reference		Offset		Semi Major Axis			Distance							Warning
Measured Depth (ft)	Vertical Depth (ft)	Measured Depth (ft)	Vertical Depth (ft)	Reference (ft)	Offset (ft)	Highside Toolface (°)	Offset Wellbore Centre +N/-S (ft)	+E/-W (ft)	Between Centres (ft)	Between Ellipses (ft)	Minimum Separation (ft)	Separation Factor		
0.0	0.0	0.0	0.0	0.0	0.0	-174.67	-14.9	-1.4	15.0	15.0	0.00	N/A CC, ES		
100.0	100.0	99.8	99.8	0.1	0.2	-171.27	-15.4	-2.4	15.5	15.3	0.29	52.742		
200.0	200.0	199.7	199.7	0.3	0.4	-165.01	-16.5	-4.4	17.0	16.3	0.75	22.788		
300.0	300.0	299.5	299.4	0.6	0.6	-158.92	-18.2	-7.0	19.5	18.3	1.19	16.308		
400.0	400.0	399.3	399.2	0.8	0.9	-157.30	-21.1	-8.8	22.8	21.2	1.63	14.029		
500.0	500.0	499.2	498.9	1.0	1.1	-160.18	-25.0	-9.0	26.6	24.6	2.06	12.929		
600.0	600.0	598.4	598.0	1.2	1.3	-164.14	-30.3	-8.6	31.6	29.1	2.50	12.617		
700.0	700.0	697.4	696.7	1.5	1.5	-166.05	-37.7	-9.4	38.9	36.0	2.95	13.191		
800.0	800.0	794.9	793.7	1.7	1.8	-164.36	-47.2	-13.2	49.5	46.1	3.41	14.514		
900.0	900.0	892.8	890.6	1.9	2.1	-0.99	-60.0	-18.6	61.8	58.0	3.82	16.184		
1,000.0	999.8	990.6	987.1	2.1	2.4	-0.80	-75.2	-23.6	73.0	68.8	4.23	17.272		
1,100.0	1,099.5	1,089.7	1,084.6	2.3	2.8	-0.67	-91.9	-29.2	82.1	77.5	4.64	17.702		
1,200.0	1,198.7	1,189.4	1,182.7	2.5	3.1	-0.94	-109.3	-34.4	88.1	83.1	5.05	17.437		
1,270.6	1,268.5	1,259.4	1,251.5	2.7	3.4	-1.72	-121.8	-37.2	90.5	85.1	5.35	16.899		
1,300.0	1,297.5	1,288.3	1,279.9	2.8	3.5	-2.12	-127.3	-38.3	91.3	85.8	5.48	16.644		
1,400.0	1,396.1	1,389.6	1,379.3	3.0	3.9	-4.01	-146.2	-41.2	93.8	87.9	5.94	15.794		
1,500.0	1,494.8	1,493.5	1,481.9	3.4	4.2	-6.19	-162.8	-42.9	93.4	87.0	6.39	14.615		
1,600.0	1,593.5	1,594.0	1,581.4	3.7	4.5	-7.61	-176.2	-45.3	90.7	83.9	6.84	13.261		
1,700.0	1,692.1	1,693.9	1,680.4	4.0	4.8	-8.87	-189.0	-47.9	87.6	80.3	7.30	11.999		
1,800.0	1,790.8	1,792.2	1,777.7	4.4	5.1	-8.62	-202.7	-53.1	86.0	78.2	7.76	11.081		
1,900.0	1,889.4	1,892.3	1,876.6	4.7	5.4	-8.91	-217.1	-57.5	84.7	76.5	8.24	10.284		
1,944.3	1,933.2	1,935.8	1,919.5	4.9	5.6	-8.89	-223.6	-59.8	84.5	76.0	8.45	10.002		
2,000.0	1,988.1	1,990.5	1,973.5	5.1	5.8	-8.43	-232.3	-63.3	84.8	76.1	8.71	9.738		
2,100.0	2,086.7	2,090.1	2,071.4	5.4	6.1	-8.34	-249.4	-68.8	86.5	77.3	9.19	9.407		
2,200.0	2,185.4	2,190.1	2,169.9	5.8	6.5	-9.28	-266.3	-72.6	87.6	77.9	9.69	9.039		
2,300.0	2,284.0	2,287.6	2,265.7	6.2	6.9	-10.42	-284.2	-76.2	90.3	80.1	10.20	8.858		
2,400.0	2,382.7	2,386.9	2,362.6	6.5	7.3	-11.66	-305.2	-80.0	95.7	85.0	10.72	8.930		
2,500.0	2,481.3	2,486.8	2,460.5	6.9	7.7	-13.58	-325.4	-82.2	100.3	89.0	11.27	8.898		
2,600.0	2,580.0	2,586.1	2,557.4	7.3	8.1	-14.24	-346.3	-86.5	105.7	93.9	11.79	8.965		
2,700.0	2,678.6	2,684.7	2,653.5	7.7	8.6	-13.11	-367.2	-94.1	111.7	99.4	12.28	9.098		
2,800.0	2,777.3	2,786.6	2,752.7	8.0	9.0	-12.12	-389.2	-101.8	118.1	105.3	12.77	9.248		
2,900.0	2,875.9	2,889.6	2,853.6	8.4	9.4	-11.16	-408.5	-109.5	121.7	108.4	13.25	9.181		
3,000.0	2,974.6	2,990.9	2,953.2	8.8	9.8	-11.03	-426.0	-115.1	123.4	109.7	13.75	8.978		
3,100.0	3,073.3	3,093.3	3,054.2	9.2	10.1	-11.36	-442.4	-119.7	123.8	109.6	14.25	8.687		
3,200.0	3,171.9	3,196.5	3,156.3	9.6	10.4	-12.37	-456.6	-122.6	121.8	107.0	14.78	8.238		
3,300.0	3,270.6	3,294.4	3,253.3	9.9	10.8	-13.05	-469.6	-126.0	119.4	104.1	15.29	7.806		
3,354.9	3,324.7	3,347.5	3,305.8	10.1	10.9	-13.08	-477.5	-128.6	119.0	103.4	15.57	7.643		
3,400.0	3,369.2	3,391.5	3,349.1	10.3	11.1	-13.00	-484.6	-131.0	119.2	103.5	15.79	7.552		
3,500.0	3,467.9	3,491.5	3,447.6	10.7	11.5	-13.19	-501.1	-135.8	120.2	103.9	16.30	7.375		
3,600.0	3,566.5	3,592.5	3,547.2	11.1	11.8	-13.74	-517.4	-139.8	120.7	103.9	16.83	7.172		
3,671.6	3,637.2	3,664.4	3,618.2	11.4	12.1	-13.81	-528.6	-143.4	120.7	103.5	17.20	7.021		
3,700.0	3,665.2	3,692.1	3,645.4	11.5	12.2	-13.75	-532.9	-144.9	120.8	103.4	17.34	6.967		
3,800.0	3,763.8	3,789.7	3,741.5	11.8	12.5	-13.66	-549.6	-150.2	122.3	104.5	17.84	6.859		
3,900.0	3,862.5	3,888.4	3,838.3	12.2	12.9	-13.57	-567.7	-155.7	125.3	107.0	18.35	6.829		
4,000.0	3,961.1	3,987.7	3,935.7	12.6	13.4	-13.56	-586.9	-161.1	129.1	110.3	18.86	6.846		
4,100.0	4,059.8	4,087.7	4,033.6	13.0	13.8	-13.63	-606.2	-166.3	132.9	113.5	19.39	6.855		
4,200.0	4,158.4	4,188.1	4,131.9	13.4	14.2	-13.64	-625.7	-171.7	136.9	117.0	19.90	6.877		
4,300.0	4,257.1	4,286.6	4,228.5	13.8	14.6	-13.80	-644.3	-176.6	140.3	119.9	20.43	6.868		
4,400.0	4,355.8	4,385.7	4,325.3	14.2	15.0	-13.49	-665.0	-182.8	145.8	124.9	20.93	6.968		
4,500.0	4,454.4	4,485.5	4,422.9	14.5	15.4	-13.33	-685.0	-188.7	150.5	129.0	21.44	7.020		
4,600.0	4,553.1	4,587.8	4,522.7	14.9	15.8	-12.83	-705.7	-195.6	155.4	133.5	21.93	7.088		
4,700.0	4,651.7	4,687.4	4,620.4	15.3	16.2	-12.49	-724.3	-201.9	158.7	136.2	22.42	7.077		

CC - Min centre to center distance or convergent point, SF - min separation factor, ES - min ellipse separation

Offset Design												Offset Site Error:		0.0 ft
Survey Program: 39-MWD												Offset Well Error:		0.0 ft
Reference				Offset			Semi Major Axis		Distance				Warning	
Measured Depth	Vertical Depth	Measured Depth	Vertical Depth	Reference	Offset	Highside Toolface	Offset Wellbore Centre	Between Centres	Between Ellipses	Minimum Separation	Separation Factor			
(ft)	(ft)	(ft)	(ft)	(ft)	(ft)	(°)	+N/-S (ft)	+E/-W (ft)	(ft)	(ft)	(ft)			
4,800.0	4,750.4	4,791.7	4,722.7	15.7	16.6	-11.82	-743.3	-209.4	161.7	138.8	22.89	7.061		
4,900.0	4,849.0	4,887.2	4,816.5	16.1	17.0	-11.31	-759.9	-216.0	163.7	140.3	23.36	7.007		
5,000.0	4,947.7	4,988.6	4,915.9	16.5	17.4	-11.18	-779.3	-222.0	167.5	143.6	23.87	7.017		
5,100.0	5,046.3	5,089.8	5,015.3	16.8	17.8	-11.32	-797.7	-227.0	170.0	145.7	24.39	6.972		
5,200.0	5,145.0	5,189.5	5,113.3	17.2	18.2	-11.61	-815.5	-231.5	172.4	147.5	24.92	6.918		
5,287.7	5,231.5	5,277.4	5,199.7	17.6	18.5	-11.87	-831.3	-235.4	174.4	149.1	25.39	6.871		
5,300.0	5,243.6	5,289.7	5,211.7	17.6	18.6	-11.91	-833.5	-236.0	174.7	149.3	25.45	6.866		
5,400.0	5,342.6	5,388.6	5,308.8	17.9	19.0	-12.14	-851.6	-240.2	179.6	153.6	25.92	6.928		
5,500.0	5,442.0	5,491.6	5,410.1	18.1	19.4	-12.75	-870.2	-242.6	187.3	161.0	26.39	7.099		
5,600.0	5,541.8	5,599.8	5,517.1	18.3	19.7	-13.31	-886.0	-244.0	195.0	168.1	26.82	7.269		
5,700.0	5,641.7	5,706.8	5,623.5	18.4	20.0	-13.43	-897.6	-245.7	202.3	175.1	27.15	7.449		
5,758.3	5,700.0	5,770.1	5,686.6	18.5	20.1	-175.14	-902.4	-246.6	206.2	167.9	38.28	5.386		
5,800.0	5,741.7	5,814.7	5,731.2	18.6	20.2	-175.01	-904.9	-247.3	208.6	170.2	38.43	5.427		
5,900.0	5,841.7	5,921.4	5,837.8	18.7	20.4	-174.60	-908.4	-249.2	212.0	173.2	38.76	5.468		
6,000.0	5,941.7	6,024.5	5,940.8	18.8	20.6	-174.02	-909.2	-251.4	212.9	173.8	39.07	5.450		
6,100.0	6,041.7	6,123.6	6,039.9	18.9	20.7	-173.32	-909.4	-254.0	213.4	174.1	39.37	5.421		
6,200.0	6,141.7	6,226.9	6,143.2	19.1	20.8	-172.66	-909.3	-256.5	213.7	174.0	39.67	5.387		
6,300.0	6,241.7	6,326.2	6,242.5	19.2	21.0	-172.45	-908.6	-257.2	213.1	173.2	39.93	5.337		
6,393.3	6,335.0	6,423.9	6,340.2	19.3	21.1	-172.55	-907.3	-256.6	211.8	171.6	40.15	5.275		
6,400.0	6,341.7	6,430.8	6,347.0	19.3	21.1	98.34	-907.2	-256.6	211.6	182.2	29.45	7.187		
6,450.0	6,391.6	6,481.6	6,397.8	19.4	21.1	98.91	-905.9	-256.0	210.6	181.1	29.54	7.130		
6,500.0	6,441.3	6,533.4	6,449.6	19.4	21.2	100.23	-904.4	-254.6	209.9	180.3	29.57	7.100		
6,550.0	6,490.4	6,587.7	6,503.8	19.5	21.2	102.19	-902.1	-251.3	209.1	179.6	29.55	7.077		
6,600.0	6,538.8	6,638.5	6,554.2	19.5	21.2	104.47	-899.4	-246.3	208.4	178.9	29.51	7.060		
6,604.2	6,542.8	6,642.5	6,558.1	19.5	21.2	104.67	-899.3	-245.8	208.4	178.9	29.51	7.061		
6,650.0	6,586.2	6,686.2	6,601.4	19.5	21.2	106.90	-897.5	-239.8	209.1	179.6	29.47	7.094		
6,700.0	6,632.4	6,735.9	6,650.3	19.5	21.3	109.50	-896.4	-230.8	211.4	182.0	29.43	7.185		
6,750.0	6,677.1	6,788.3	6,700.7	19.5	21.3	111.72	-896.2	-216.6	214.8	185.4	29.39	7.309		
6,800.0	6,720.2	6,838.7	6,747.8	19.5	21.3	113.35	-897.2	-198.6	219.2	189.8	29.37	7.464		
6,850.0	6,761.4	6,888.5	6,793.0	19.5	21.3	114.69	-899.3	-178.0	225.1	195.7	29.32	7.675		
6,900.0	6,800.5	6,943.3	6,841.4	19.5	21.4	116.17	-902.4	-152.4	232.0	202.7	29.29	7.919		
6,950.0	6,837.3	7,000.8	6,891.2	19.5	21.4	118.09	-904.7	-123.8	239.2	210.0	29.22	8.185		
7,000.0	6,871.7	7,071.2	6,948.5	19.6	21.5	120.31	-905.9	-83.1	245.2	216.0	29.17	8.404		
7,050.0	6,903.5	7,138.2	6,997.4	19.6	21.5	121.66	-906.0	-37.3	249.0	219.7	29.26	8.509		
7,100.0	6,932.5	7,200.4	7,036.5	19.6	21.5	122.03	-906.8	11.0	251.6	222.3	29.32	8.582		
7,150.0	6,958.6	7,253.3	7,067.3	19.7	21.6	122.36	-907.7	53.9	254.8	225.3	29.53	8.629		
7,200.0	6,981.6	7,309.9	7,098.8	19.7	21.7	123.05	-908.8	101.0	259.1	229.3	29.87	8.676		
7,250.0	7,001.5	7,370.6	7,129.7	19.9	21.9	123.98	-909.3	153.2	263.5	233.3	30.21	8.722		
7,300.0	7,018.2	7,431.0	7,157.0	20.1	22.1	124.96	-909.5	207.1	267.9	237.2	30.67	8.735		
7,350.0	7,031.5	7,493.3	7,180.9	20.5	22.4	125.88	-909.7	264.6	272.2	241.0	31.22	8.718		
7,400.0	7,041.4	7,558.6	7,200.0	21.1	22.9	126.51	-910.3	327.0	276.0	244.0	32.00	8.624		
7,450.0	7,047.9	7,625.0	7,213.1	21.8	23.6	126.91	-910.8	392.1	279.0	245.9	33.03	8.446		
7,493.3	7,050.8	7,677.7	7,219.8	22.5	24.3	127.21	-910.7	444.4	281.0	247.1	33.93	8.283		
7,500.0	7,051.0	7,684.8	7,220.6	22.6	24.4	127.28	-910.6	451.4	281.3	247.2	34.10	8.251		
7,600.0	7,054.2	7,791.0	7,228.8	24.5	26.1	127.80	-911.1	557.2	285.7	248.6	37.08	7.706		
7,700.0	7,056.8	7,901.9	7,232.1	26.5	28.2	127.64	-911.1	668.1	287.0	246.3	40.71	7.051		
7,729.4	7,057.5	7,931.3	7,232.8	27.1	28.8	127.64	-910.6	697.5	287.0	245.3	41.75	6.875		
7,800.0	7,059.0	8,002.8	7,234.4	28.7	30.3	127.69	-909.4	769.0	287.0	242.8	44.26	6.485		
7,859.6	7,060.0	8,064.8	7,235.2	30.1	31.6	127.65	-908.4	831.0	286.8	240.2	46.52	6.164		
7,859.9	7,060.0	8,065.1	7,235.2	30.1	31.6	127.65	-908.4	831.2	286.8	240.2	46.53	6.162		
7,900.0	7,060.6	8,106.3	7,235.2	31.0	32.5	127.56	-907.7	872.4	286.4	238.2	48.13	5.950		
8,000.0	7,062.2	8,208.5	7,234.9	33.4	34.8	127.33	-905.6	974.6	284.8	232.6	52.21	5.456		

Company:	Synergy Resources	Local Co-ordinate Reference:	Well SRC Wiedeman 22-5-4NBHZ
Project:	Sec.5-T5N-R66W	TVD Reference:	WELL @ 4796.0ft (RKB - 13')
Reference Site:	SRC Wiedeman Pad Sec.5-T5N-R66W	MD Reference:	WELL @ 4796.0ft (RKB - 13')
Site Error:	0.0ft	North Reference:	True
Reference Well:	SRC Wiedeman 22-5-4NBHZ	Survey Calculation Method:	Minimum Curvature
Well Error:	0.0ft	Output errors are at	2.00 sigma
Reference Wellbore	Wellbore #1	Database:	Landmark
Reference Design:	Plan #3 (9-24-14)	Offset TVD Reference:	Offset Datum

Offset Design		SRC Wiedeman Pad Sec.5-T5N-R66W - SRC Wiedeman 22-5-4CHZ - Wellbore #1 - Wellbore #1										Offset Site Error:		0.0 ft
Survey Program: 39-MWD												Offset Well Error:		0.0 ft
Reference		Offset		Semi Major Axis			Distance							Warning
Measured Depth	Vertical Depth	Measured Depth	Vertical Depth	Reference	Offset	Highside Toolface	Offset Wellbore Centre		Between Centres	Between Ellipses	Minimum Separation	Separation Factor		
(ft)	(ft)	(ft)	(ft)	(ft)	(ft)	(°)	+N/-S (ft)	+E/-W (ft)	(ft)	(ft)	(ft)			
8,100.0	7,063.8	8,309.2	7,234.3	35.8	37.2	127.11	-902.9	1,075.2	282.6	226.3	56.36	5.015		
8,200.0	7,065.3	8,409.7	7,234.0	38.3	39.6	126.94	-900.3	1,175.7	280.6	220.0	60.58	4.631		
8,300.0	7,066.9	8,510.0	7,233.4	40.8	42.0	126.79	-897.1	1,276.0	278.0	213.1	64.87	4.286		
8,400.0	7,068.4	8,608.4	7,231.3	43.4	44.5	126.17	-895.6	1,374.4	275.8	206.2	69.56	3.965		
8,500.1	7,070.0	8,709.0	7,230.2	46.0	47.1	125.78	-893.7	1,474.9	274.0	199.8	74.21	3.692		
8,545.9	7,070.3	8,755.3	7,230.3	47.2	48.2	125.83	-892.3	1,521.2	273.2	197.2	76.02	3.594		
8,600.0	7,070.3	8,809.3	7,230.9	48.6	49.6	126.11	-890.1	1,575.2	272.5	194.4	78.11	3.488		
8,700.0	7,070.3	8,908.1	7,232.9	51.2	52.2	126.81	-885.8	1,673.8	271.4	189.6	81.76	3.319		
8,776.9	7,070.3	8,982.9	7,234.0	53.2	54.1	127.18	-883.3	1,748.5	271.0	186.3	84.68	3.200		
8,800.0	7,070.3	9,005.1	7,234.5	53.9	54.7	127.31	-882.6	1,770.8	271.1	185.5	85.53	3.169		
8,900.0	7,070.2	9,101.8	7,237.3	56.5	57.2	127.90	-880.2	1,867.4	272.0	182.8	89.16	3.051		
9,000.0	7,070.2	9,200.1	7,240.0	59.2	59.8	128.31	-878.9	1,965.7	273.9	180.9	92.98	2.946		
9,100.0	7,070.1	9,301.7	7,242.4	61.9	62.5	128.65	-877.9	2,067.3	275.8	178.9	96.94	2.846		
9,200.0	7,070.1	9,397.7	7,244.8	64.6	65.1	128.94	-877.2	2,163.2	278.0	177.2	100.80	2.758		
9,300.0	7,070.1	9,498.4	7,247.1	67.3	67.8	129.08	-877.6	2,263.8	281.0	176.0	104.96	2.677		
9,400.0	7,070.0	9,598.0	7,249.1	70.0	70.5	129.15	-877.9	2,363.4	283.7	174.5	109.18	2.598		
9,500.1	7,070.0	9,694.2	7,252.8	72.7	73.1	129.59	-877.6	2,459.5	287.1	174.3	112.80	2.545		
9,530.3	7,070.1	9,724.4	7,254.6	73.5	73.9	129.82	-877.4	2,489.7	288.3	174.4	113.86	2.532		
9,600.0	7,070.9	9,794.7	7,257.6	75.4	75.9	130.02	-877.6	2,559.9	290.7	174.1	116.58	2.494		
9,700.0	7,071.9	9,897.3	7,260.2	78.2	78.7	129.95	-878.5	2,662.5	293.5	172.5	121.06	2.425		
9,800.0	7,072.9	9,999.2	7,262.6	80.9	81.4	129.89	-878.9	2,764.4	295.9	170.4	125.50	2.358		
9,900.0	7,073.9	10,106.7	7,263.5	83.7	84.4	129.81	-877.8	2,871.9	296.1	166.0	130.13	2.276		
10,000.0	7,074.9	10,207.3	7,263.3	86.4	87.1	129.69	-875.8	2,972.4	295.0	160.4	134.69	2.191		
10,100.0	7,075.9	10,307.7	7,266.1	89.2	89.8	130.24	-871.9	3,072.7	294.3	156.3	138.03	2.132		
10,200.0	7,077.0	10,408.0	7,268.5	91.9	92.6	130.85	-867.3	3,172.8	292.9	151.7	141.20	2.074		
10,300.0	7,078.0	10,507.1	7,269.0	94.7	95.3	130.86	-865.2	3,272.0	292.1	146.6	145.45	2.008		
10,362.7	7,078.6	10,567.3	7,269.6	96.4	96.9	130.92	-863.7	3,332.1	291.6	143.6	147.96	1.970		
10,400.0	7,079.0	10,599.4	7,270.2	97.4	97.8	130.95	-863.3	3,364.2	291.9	142.5	149.39	1.954		
10,500.1	7,080.0	10,693.7	7,273.5	100.2	100.4	131.01	-864.2	3,458.4	295.3	141.9	153.44	1.925		
10,529.6	7,080.1	10,723.9	7,274.7	101.0	101.2	131.06	-864.4	3,488.6	296.5	142.0	154.51	1.919		
10,600.0	7,080.1	10,798.4	7,277.0	103.0	103.3	131.19	-864.8	3,563.1	299.0	141.7	157.33	1.901		
10,700.0	7,080.1	10,901.9	7,276.9	105.7	106.2	130.83	-866.1	3,666.6	301.1	138.6	162.49	1.853		
10,800.0	7,080.1	11,004.5	7,275.8	108.5	109.0	130.34	-867.1	3,769.1	302.3	134.4	167.95	1.800		
10,900.0	7,080.1	11,103.2	7,276.6	111.3	111.7	130.42	-866.0	3,867.9	303.2	131.1	172.09	1.762		
11,000.0	7,080.1	11,207.6	7,278.7	114.0	114.6	130.82	-863.6	3,972.2	303.8	128.3	175.56	1.731		
11,100.0	7,080.1	11,309.2	7,280.0	116.8	117.4	131.23	-860.2	4,073.8	303.3	124.4	178.92	1.695		
11,200.0	7,080.1	11,410.2	7,280.4	119.6	120.2	131.49	-857.0	4,174.7	302.4	119.8	182.57	1.656		
11,300.0	7,080.0	11,511.3	7,280.0	122.3	123.0	131.62	-854.1	4,275.8	301.1	114.6	186.55	1.614		
11,400.0	7,080.0	11,615.6	7,278.5	125.1	125.9	131.62	-850.9	4,380.0	299.0	108.0	190.91	1.566		
11,500.0	7,080.0	11,719.2	7,275.7	127.9	128.7	131.53	-846.8	4,483.5	295.4	99.9	195.48	1.511		
11,576.9	7,080.0	11,784.0	7,273.8	130.0	130.5	131.50	-843.9	4,548.2	292.4	93.8	198.59	1.473 Level 3, SF		
11,600.0	7,080.0	11,784.0	7,273.8	130.7	130.5	131.50	-843.9	4,548.2	293.3	94.3	199.08	1.473 Level 3		
11,630.6	7,080.0	11,784.0	7,273.8	131.5	130.5	131.50	-843.9	4,548.2	297.3	97.6	199.74	1.489 Level 3		

SRC Wiedeman Pad Sec.5-T5N-R66W - SRC Wiedeman A-5-3NBHZ - Wellbore #1 - Plan #3 (9-24-14)													Offset Site Error:	0.0 ft
Survey Program: 0-MWD													Offset Well Error:	0.0 ft
Reference		Offset		Semi Major Axis			Distance							
Measured Depth	Vertical Depth	Measured Depth	Vertical Depth	Reference	Offset	Highside Toolface	Offset Wellbore Centre		Between Centres	Between Ellipses	Minimum Separation	Separation Factor	Warning	
(ft)	(ft)	(ft)	(ft)	(ft)	(ft)	(°)	+N/-S (ft)	+E/-W (ft)	(ft)	(ft)	(ft)			
0.0	0.0	0.0	0.0	0.0	0.0	5.68	44.8	4.5	45.0					
100.0	100.0	100.0	100.0	0.1	0.1	5.68	44.8	4.5	45.0	44.8	0.22	200.366		
200.0	200.0	200.0	200.0	0.3	0.3	5.68	44.8	4.5	45.0	44.4	0.67	66.789		
300.0	300.0	300.0	300.0	0.6	0.6	5.68	44.8	4.5	45.0	43.9	1.12	40.073		
400.0	400.0	400.0	400.0	0.8	0.8	5.68	44.8	4.5	45.0	43.5	1.57	28.624		
500.0	500.0	500.0	500.0	1.0	1.0	5.68	44.8	4.5	45.0	43.0	2.02	22.263		
600.0	600.0	600.0	600.0	1.2	1.2	5.68	44.8	4.5	45.0	42.6	2.47	18.215		
700.0	700.0	700.0	700.0	1.5	1.5	5.68	44.8	4.5	45.0	42.1	2.92	15.413		
800.0	800.0	800.0	800.0	1.7	1.7	5.68	44.8	4.5	45.0	41.7	3.37	13.358 CC, ES		
900.0	900.0	900.0	900.0	1.9	1.9	167.94	44.8	4.5	46.7	42.9	3.79	12.319		
1,000.0	999.8	999.8	999.8	2.1	2.1	169.13	44.8	4.5	51.9	47.7	4.20	12.362		
1,100.0	1,099.5	1,099.5	1,099.5	2.3	2.4	170.66	44.8	4.5	60.5	55.8	4.60	13.133		
1,200.0	1,198.7	1,198.7	1,198.7	2.5	2.6	172.19	44.8	4.5	72.5	67.5	5.01	14.463		
1,270.6	1,268.5	1,268.5	1,268.5	2.7	2.7	173.16	44.8	4.5	83.1	77.8	5.30	15.670		
1,300.0	1,297.5	1,297.5	1,297.5	2.8	2.8	173.54	44.8	4.5	87.9	82.5	5.43	16.188		
1,400.0	1,396.1	1,396.1	1,396.1	3.0	3.0	174.55	44.8	4.5	104.2	98.3	5.86	17.772		
1,500.0	1,494.8	1,494.8	1,494.8	3.4	3.2	175.29	44.8	4.5	120.4	114.1	6.30	19.125		
1,600.0	1,593.5	1,593.5	1,593.5	3.7	3.5	175.85	44.8	4.5	136.8	130.0	6.74	20.289		
1,700.0	1,692.1	1,692.1	1,692.1	4.0	3.7	176.29	44.8	4.5	153.1	145.9	7.19	21.300		
1,800.0	1,790.8	1,790.8	1,790.8	4.4	3.9	176.65	44.8	4.5	169.4	161.8	7.64	22.183		
1,900.0	1,889.4	1,889.4	1,889.4	4.7	4.1	176.95	44.8	4.5	185.7	177.6	8.09	22.962		
2,000.0	1,988.1	1,988.1	1,988.1	5.1	4.4	177.19	44.8	4.5	202.1	193.5	8.54	23.652		
2,100.0	2,086.7	2,084.6	2,084.5	5.4	4.6	177.09	45.5	3.4	218.8	209.8	8.99	24.337		
2,200.0	2,185.4	2,180.3	2,180.2	5.8	4.8	176.26	48.1	-0.2	236.7	227.3	9.44	25.076		
2,300.0	2,284.0	2,275.3	2,274.9	6.2	5.0	174.87	52.4	-6.4	255.9	246.0	9.90	25.854		
2,400.0	2,382.7	2,372.1	2,371.1	6.5	5.2	173.20	58.1	-14.6	276.1	265.7	10.37	26.627		
2,500.0	2,481.3	2,469.7	2,468.2	6.9	5.4	171.72	64.0	-22.9	296.5	285.7	10.85	27.332		
2,600.0	2,580.0	2,567.3	2,565.3	7.3	5.7	170.43	69.9	-31.3	317.1	305.8	11.34	27.973		
2,700.0	2,678.6	2,664.9	2,662.4	7.7	5.9	169.30	75.7	-39.7	337.9	326.1	11.83	28.559		
2,800.0	2,777.3	2,762.5	2,759.4	8.0	6.2	168.30	81.6	-48.1	358.8	346.4	12.33	29.094		
2,900.0	2,875.9	2,860.2	2,856.5	8.4	6.4	167.41	87.4	-56.4	379.7	366.9	12.84	29.584		
3,000.0	2,974.6	2,957.8	2,953.6	8.8	6.7	166.62	93.3	-64.8	400.8	387.4	13.34	30.034		
3,100.0	3,073.3	3,055.4	3,050.7	9.2	6.9	165.90	99.2	-73.2	421.9	408.0	13.86	30.448		
3,200.0	3,171.9	3,153.0	3,147.8	9.6	7.2	165.25	105.0	-81.5	443.0	428.7	14.37	30.830		
3,300.0	3,270.6	3,250.6	3,244.9	9.9	7.4	164.66	110.9	-89.9	464.2	449.4	14.89	31.183		
3,400.0	3,369.2	3,348.2	3,341.9	10.3	7.7	164.12	116.7	-98.3	485.5	470.1	15.41	31.511		
3,500.0	3,467.9	3,445.9	3,439.0	10.7	8.0	163.63	122.6	-106.6	506.8	490.9	15.93	31.815		
3,600.0	3,566.5	3,543.5	3,536.1	11.1	8.2	163.17	128.5	-115.0	528.1	511.7	16.45	32.099		
3,700.0	3,665.2	3,641.1	3,633.2	11.5	8.5	162.76	134.3	-123.4	549.5	532.5	16.98	32.363		
3,800.0	3,763.8	3,738.7	3,730.3	11.8	8.8	162.37	140.2	-131.7	570.9	553.4	17.51	32.610		
3,900.0	3,862.5	3,839.9	3,831.0	12.2	9.0	162.01	146.1	-140.3	592.2	574.1	18.03	32.841		
4,000.0	3,961.1	3,951.3	3,942.0	12.6	9.3	161.89	150.9	-147.1	611.9	593.4	18.53	33.028		
4,100.0	4,059.8	4,063.5	4,054.1	13.0	9.5	162.12	153.2	-150.3	629.5	610.5	18.98	33.163		
4,200.0	4,158.4	4,167.8	4,158.4	13.4	9.7	162.56	153.4	-150.6	645.3	625.9	19.42	33.230		
4,300.0	4,257.1	4,266.5	4,257.1	13.8	9.9	162.98	153.4	-150.6	660.9	641.0	19.87	33.266		
4,400.0	4,355.8	4,365.1	4,355.8	14.2	10.1	163.39	153.4	-150.6	676.6	656.3	20.32	33.291		
4,500.0	4,454.4	4,463.8	4,454.4	14.5	10.3	163.78	153.4	-150.6	692.3	671.5	20.78	33.315		
4,600.0	4,553.1	4,562.4	4,553.1	14.9	10.5	164.15	153.4	-150.6	708.0	686.8	21.24	33.339		
4,700.0	4,651.7	4,661.1	4,651.7	15.3	10.7	164.50	153.4	-150.6	723.8	702.1	21.69	33.363		
4,800.0	4,750.4	4,759.8	4,750.4	15.7	10.9	164.84	153.4	-150.6	739.6	717.4	22.15	33.386		
4,900.0	4,849.0	4,858.4	4,849.0	16.1	11.1	165.16	153.4	-150.6	755.4	732.8	22.61	33.409		
5,000.0	4,947.7	4,957.1	4,947.7	16.5	11.3	165.47	153.4	-150.6	771.2	748.1	23.07	33.432		

COMPASS 2003.21 Build 46

Company:	Synergy Resources	Local Co-ordinate Reference:	Well SRC Wiedeman 22-5-4NBHZ
Project:	Sec.5-T5N-R66W	TVD Reference:	WELL @ 4796.0ft (RKB - 13')
Reference Site:	SRC Wiedeman Pad Sec.5-T5N-R66W	MD Reference:	WELL @ 4796.0ft (RKB - 13')
Site Error:	0.0ft	North Reference:	True
Reference Well:	SRC Wiedeman 22-5-4NBHZ	Survey Calculation Method:	Minimum Curvature
Well Error:	0.0ft	Output errors are at	2.00 sigma
Reference Wellbore	Wellbore #1	Database:	Landmark
Reference Design:	Plan #3 (9-24-14)	Offset TVD Reference:	Offset Datum

Offset Design													Offset Site Error:	0.0 ft
Survey Program: 0-MWD													Offset Well Error:	0.0 ft
Reference		Offset		Semi Major Axis			Distance							Warning
Measured Depth (ft)	Vertical Depth (ft)	Measured Depth (ft)	Vertical Depth (ft)	Reference (ft)	Offset (ft)	Highside Toolface (°)	Offset Wellbore Centre +N/-S (ft)	+E/-W (ft)	Between Centres (ft)	Between Ellipses (ft)	Minimum Separation (ft)	Separation Factor		
5,100.0	5,046.3	5,055.7	5,046.3	16.8	11.5	165.77	153.4	-150.6	787.1	763.5	23.53	33.454		
5,200.0	5,145.0	5,154.4	5,145.0	17.2	11.7	166.06	153.4	-150.6	802.9	779.0	23.99	33.475		
5,287.7	5,231.5	5,240.9	5,231.5	17.6	11.9	166.30	153.4	-150.6	816.9	792.5	24.39	33.494		
5,300.0	5,243.6	5,253.0	5,243.6	17.6	12.0	166.34	153.4	-150.6	818.8	794.4	24.45	33.488		
5,400.0	5,342.6	5,352.0	5,342.6	17.9	12.2	166.64	153.4	-150.6	832.6	807.7	24.91	33.419		
5,500.0	5,442.0	5,451.4	5,442.0	18.1	12.4	166.85	153.4	-150.6	843.1	817.7	25.35	33.257		
5,600.0	5,541.8	5,551.2	5,541.8	18.3	12.6	167.00	153.4	-150.6	850.2	824.4	25.76	33.007		
5,700.0	5,641.7	5,651.1	5,641.7	18.4	12.8	167.07	153.4	-150.6	853.9	827.7	26.13	32.674		
5,758.3	5,700.0	5,709.4	5,700.0	18.5	12.9	5.27	153.4	-150.6	854.4	823.6	30.85	27.695		
5,800.0	5,741.7	5,751.1	5,741.7	18.6	13.0	5.27	153.4	-150.6	854.4	823.4	31.00	27.562		
5,900.0	5,841.7	5,851.1	5,841.7	18.7	13.2	5.27	153.4	-150.6	854.4	823.1	31.34	27.263		
6,000.0	5,941.7	5,951.1	5,941.7	18.8	13.5	5.27	153.4	-150.6	854.4	822.7	31.68	26.967		
6,100.0	6,041.7	6,051.1	6,041.7	18.9	13.7	5.27	153.4	-150.6	854.4	822.4	32.03	26.677		
6,200.0	6,141.7	6,151.1	6,141.7	19.1	13.9	5.27	153.4	-150.6	854.4	822.1	32.38	26.391		
6,300.0	6,241.7	6,251.1	6,241.7	19.2	14.1	5.27	153.4	-150.6	854.4	821.7	32.73	26.109		
6,393.3	6,335.0	6,344.4	6,335.0	19.3	14.3	5.27	153.4	-150.6	854.4	821.4	33.05	25.851		
6,400.0	6,341.7	6,351.1	6,341.7	19.3	14.3	-83.86	153.4	-150.6	854.4	825.6	28.85	29.613		
6,450.0	6,391.6	6,401.0	6,391.6	19.4	14.4	-84.02	153.4	-150.6	854.2	825.2	29.04	29.413		
6,500.0	6,441.3	6,450.7	6,441.3	19.4	14.5	-84.45	153.4	-150.6	853.6	824.4	29.23	29.206		
6,550.0	6,490.4	6,499.8	6,490.4	19.5	14.6	-85.11	153.4	-150.6	852.8	823.4	29.41	28.995		
6,600.0	6,538.8	6,545.9	6,538.8	19.5	14.7	-85.92	153.4	-150.0	851.8	822.2	29.58	28.797		
6,650.0	6,586.2	6,591.2	6,581.7	19.5	14.8	-86.75	153.4	-146.7	851.0	821.2	29.72	28.628		
6,700.0	6,632.4	6,637.2	6,627.2	19.5	14.9	-87.59	153.5	-140.4	850.3	820.4	29.86	28.473		
6,750.0	6,677.1	6,683.9	6,673.0	19.5	15.0	-88.44	153.6	-131.1	849.7	819.7	30.00	28.327		
6,800.0	6,720.2	6,731.4	6,718.8	19.5	15.0	-89.32	153.6	-118.6	849.3	819.2	30.14	28.184		
6,850.0	6,761.4	6,779.7	6,764.4	19.5	15.1	-90.20	153.8	-102.7	849.2	818.9	30.29	28.033		
6,876.1	6,782.0	6,805.3	6,788.1	19.5	15.1	-90.66	153.8	-93.1	849.1	818.7	30.39	27.945		
6,900.0	6,800.5	6,829.0	6,809.7	19.5	15.1	-91.08	153.9	-83.4	849.1	818.7	30.47	27.864		
6,950.0	6,837.3	6,879.1	6,854.4	19.5	15.2	-91.97	154.1	-60.6	849.3	818.6	30.70	27.663		
7,000.0	6,871.7	6,930.3	6,898.2	19.6	15.3	-92.86	154.3	-34.2	849.7	818.7	30.99	27.416		
7,050.0	6,903.5	6,982.6	6,940.9	19.6	15.4	-93.75	154.5	-4.1	850.3	818.9	31.37	27.106		
7,100.0	6,932.5	7,035.9	6,982.1	19.6	15.6	-94.63	154.7	29.8	851.0	819.1	31.85	26.719		
7,150.0	6,958.6	7,090.5	7,021.5	19.7	15.9	-95.49	155.0	67.5	851.9	819.4	32.46	26.243		
7,200.0	6,981.6	7,146.2	7,058.7	19.7	16.2	-96.34	155.3	109.0	852.9	819.7	33.22	25.672		
7,250.0	7,001.5	7,203.2	7,093.2	19.9	16.6	-97.16	155.7	154.3	854.0	819.9	34.16	25.001		
7,300.0	7,018.2	7,261.4	7,124.7	20.1	17.1	-97.95	156.0	203.3	855.2	820.0	35.29	24.234		
7,350.0	7,031.5	7,321.0	7,152.6	20.5	17.8	-98.71	156.4	255.9	856.5	819.9	36.62	23.390		
7,400.0	7,041.4	7,381.7	7,176.5	21.1	18.6	-99.43	156.8	311.7	857.8	819.6	38.14	22.488		
7,450.0	7,047.9	7,443.8	7,196.0	21.8	19.5	-100.11	157.3	370.6	859.0	819.2	39.86	21.551		
7,493.3	7,050.8	7,498.5	7,208.8	22.5	20.4	-100.65	157.6	423.8	860.1	818.6	41.50	20.726		
7,500.0	7,051.0	7,507.0	7,210.5	22.6	20.5	-100.74	157.7	432.1	860.2	818.5	41.76	20.600		
7,600.0	7,054.2	7,637.0	7,223.0	24.5	22.9	-101.30	158.7	561.3	860.7	814.7	46.00	18.710		
7,700.0	7,056.8	7,737.9	7,223.0	26.5	25.0	-101.13	159.4	662.3	859.4	809.3	50.14	17.139		
7,800.0	7,059.0	7,837.9	7,223.0	28.7	27.1	-101.01	160.1	762.3	858.2	803.7	54.50	15.748		
7,859.6	7,060.0	7,897.5	7,223.0	30.1	28.5	-100.95	160.6	821.9	857.6	800.4	57.18	14.997		
7,859.9	7,060.0	7,897.8	7,223.0	30.1	28.5	-100.95	160.6	822.1	857.6	800.4	57.19	14.994		
7,900.0	7,060.6	7,937.9	7,223.0	31.0	29.4	-100.91	160.9	862.2	857.2	798.1	59.04	14.517		
8,000.0	7,062.2	8,037.9	7,223.0	33.4	31.8	-100.82	161.6	962.2	856.1	792.3	63.75	13.429		
8,100.0	7,063.8	8,137.9	7,223.0	35.8	34.2	-100.73	162.4	1,062.2	855.0	786.4	68.58	12.467		
8,200.0	7,065.3	8,237.8	7,223.0	38.3	36.7	-100.63	163.1	1,162.2	854.0	780.5	73.51	11.616		
8,300.0	7,066.9	8,337.8	7,223.0	40.8	39.2	-100.54	163.8	1,262.2	852.9	774.4	78.53	10.861		
8,400.0	7,068.4	8,437.8	7,223.0	43.4	41.8	-100.45	164.6	1,362.1	851.9	768.2	83.62	10.188		

CC - Min centre to center distance or convergent point, SF - min separation factor, ES - min ellipse separation

Offset Design											Offset Site Error:		0.0 ft
Survey Program: 0-MWD											Offset Well Error:		0.0 ft
Reference		Offset		Semi Major Axis			Distance					Warning	
Measured Depth	Vertical Depth	Measured Depth	Vertical Depth	Reference	Offset	Highside Toolface	Offset Wellbore Centre		Between Centres	Between Ellipses	Minimum Separation		Separation Factor
(ft)	(ft)	(ft)	(ft)	(ft)	(ft)	(°)	+N/-S (ft)	+E/-W (ft)	(ft)	(ft)	(ft)		
8,500.1	7,070.0	8,537.9	7,223.0	46.0	44.4	-100.35	165.3	1,462.2	850.8	762.0	88.77	9.585	
8,545.9	7,070.3	8,583.7	7,223.0	47.2	45.6	-100.34	165.6	1,508.0	850.4	759.2	91.14	9.330	
8,600.0	7,070.3	8,637.8	7,223.0	48.6	47.0	-100.35	166.0	1,562.1	850.0	756.0	93.94	9.048	
8,700.0	7,070.3	8,737.8	7,223.0	51.2	49.6	-100.36	166.8	1,662.1	849.2	750.1	99.15	8.565	
8,800.0	7,070.3	8,837.8	7,223.0	53.9	52.3	-100.37	167.5	1,762.1	848.4	744.1	104.38	8.128	
8,900.0	7,070.2	8,937.8	7,223.0	56.5	55.0	-100.38	168.3	1,862.1	847.7	738.0	109.64	7.731	
9,000.0	7,070.2	9,037.8	7,223.0	59.2	57.7	-100.40	169.0	1,962.1	846.9	732.0	114.93	7.369	
9,100.0	7,070.1	9,137.8	7,223.0	61.9	60.4	-100.41	169.7	2,062.1	846.2	725.9	120.24	7.037	
9,200.0	7,070.1	9,237.8	7,223.0	64.6	63.1	-100.42	170.5	2,162.1	845.4	719.8	125.56	6.733	
9,300.0	7,070.1	9,337.8	7,223.0	67.3	65.8	-100.43	171.2	2,262.1	844.6	713.7	130.90	6.452	
9,400.0	7,070.0	9,437.8	7,223.0	70.0	68.5	-100.44	171.9	2,362.1	843.9	707.6	136.26	6.193	
9,500.1	7,070.0	9,537.9	7,223.0	72.7	71.2	-100.46	172.7	2,462.2	843.1	701.5	141.63	5.953	
9,530.3	7,070.1	9,568.0	7,223.0	73.5	72.1	-100.44	172.9	2,492.3	842.9	699.6	143.25	5.884	
9,600.0	7,070.9	9,637.8	7,223.0	75.4	74.0	-100.40	173.4	2,562.1	842.2	695.2	147.01	5.729	
9,700.0	7,071.9	9,737.8	7,223.0	78.2	76.7	-100.34	174.2	2,662.0	841.3	688.8	152.43	5.519	
9,800.0	7,072.9	9,837.7	7,223.0	80.9	79.4	-100.29	174.9	2,762.0	840.3	682.4	157.86	5.323	
9,900.0	7,073.9	9,937.7	7,223.0	83.7	82.2	-100.23	175.6	2,862.0	839.4	676.1	163.30	5.140	
10,000.0	7,074.9	10,037.7	7,223.0	86.4	84.9	-100.17	176.4	2,962.0	838.4	669.7	168.75	4.968	
10,100.0	7,075.9	10,137.7	7,223.0	89.2	87.7	-100.11	177.1	3,062.0	837.5	663.3	174.21	4.807	
10,200.0	7,077.0	10,237.7	7,223.0	91.9	90.5	-100.05	177.8	3,162.0	836.6	656.9	179.68	4.656	
10,300.0	7,078.0	10,337.7	7,223.0	94.7	93.2	-99.99	178.6	3,262.0	835.6	650.5	185.15	4.513	
10,400.0	7,079.0	10,437.7	7,223.0	97.4	96.0	-99.93	179.3	3,362.0	834.7	644.0	190.63	4.378	
10,500.1	7,080.0	10,537.8	7,223.0	100.2	98.7	-99.87	180.1	3,462.0	833.7	637.6	196.12	4.251	
10,529.6	7,080.1	10,567.3	7,223.0	101.0	99.6	-99.87	180.3	3,491.5	833.5	635.7	197.74	4.215	
10,600.0	7,080.1	10,637.7	7,223.0	103.0	101.5	-99.88	180.8	3,561.9	832.9	631.4	201.59	4.132	
10,700.0	7,080.1	10,737.7	7,223.0	105.7	104.3	-99.89	181.5	3,661.9	832.2	625.1	207.04	4.019	
10,800.0	7,080.1	10,837.7	7,223.0	108.5	107.1	-99.90	182.3	3,761.9	831.4	618.9	212.50	3.912	
10,900.0	7,080.1	10,937.7	7,223.0	111.3	109.8	-99.91	183.0	3,861.9	830.6	612.7	217.97	3.811	
11,000.0	7,080.1	11,037.7	7,223.0	114.0	112.6	-99.92	183.8	3,961.9	829.9	606.4	223.43	3.714	
11,100.0	7,080.1	11,137.7	7,223.0	116.8	115.4	-99.93	184.5	4,061.9	829.1	600.2	228.90	3.622	
11,200.0	7,080.1	11,237.7	7,223.0	119.6	118.2	-99.94	185.2	4,161.9	828.3	593.9	234.37	3.534	
11,300.0	7,080.0	11,337.7	7,223.0	122.3	120.9	-99.95	186.0	4,261.9	827.6	587.7	239.85	3.450	
11,400.0	7,080.0	11,437.7	7,223.0	125.1	123.7	-99.96	186.7	4,361.9	826.8	581.5	245.32	3.370	
11,500.0	7,080.0	11,537.7	7,223.0	127.9	126.5	-99.97	187.4	4,461.9	826.0	575.2	250.80	3.294	
11,600.0	7,080.0	11,637.7	7,223.0	130.7	129.3	-99.98	188.2	4,561.9	825.2	569.0	256.28	3.220	
11,630.6	7,080.0	11,668.2	7,223.0	131.5	130.1	-99.98	188.4	4,592.5	825.0	567.1	257.95	3.198 SF	

Company:	Synergy Resources	Local Co-ordinate Reference:	Well SRC Wiedeman 22-5-4NBHZ
Project:	Sec.5-T5N-R66W	TVD Reference:	WELL @ 4796.0ft (RKB - 13')
Reference Site:	SRC Wiedeman Pad Sec.5-T5N-R66W	MD Reference:	WELL @ 4796.0ft (RKB - 13')
Site Error:	0.0ft	North Reference:	True
Reference Well:	SRC Wiedeman 22-5-4NBHZ	Survey Calculation Method:	Minimum Curvature
Well Error:	0.0ft	Output errors are at	2.00 sigma
Reference Wellbore	Wellbore #1	Database:	Landmark
Reference Design:	Plan #3 (9-24-14)	Offset TVD Reference:	Offset Datum

Reference Depths are relative to WELL @ 4796.0ft (RKB - 13')

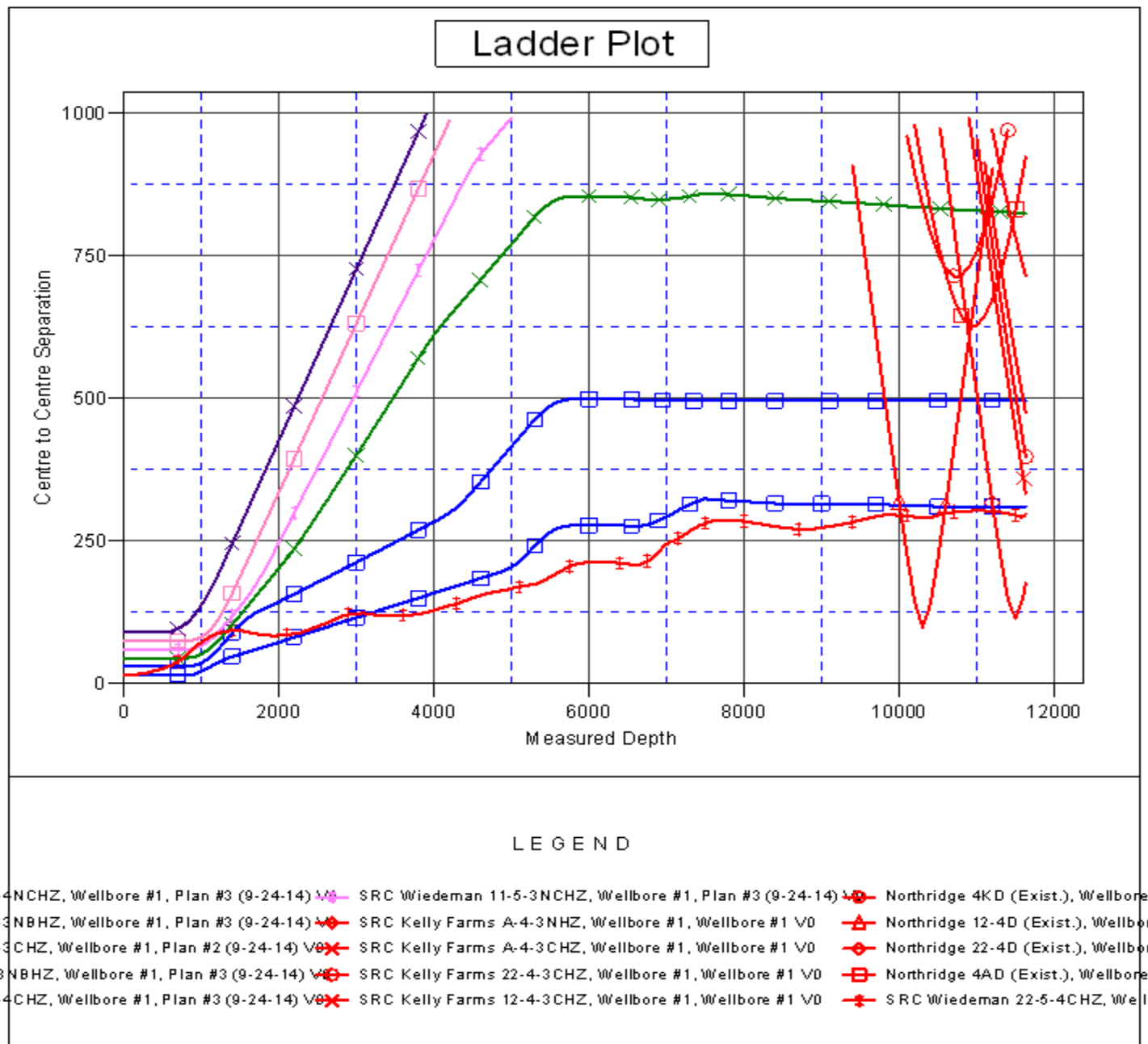
Offset Depths are relative to Offset Datum

Central Meridian is -105.500000 °

Coordinates are relative to: SRC Wiedeman 22-5-4NBHZ

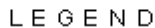
Coordinate System is US State Plane 1983, Colorado Northern Zone

Grid Convergence at Surface is: 0.45°



Local Co-ordinate Reference:	Well SRC Wiedeman 22-5-4NBHZ
TVD Reference:	WELL @ 4796.0ft (RKB - 13')
MD Reference:	WELL @ 4796.0ft (RKB - 13')
North Reference:	True
Survey Calculation Method:	Minimum Curvature
Output errors are at	2.00 sigma
Database:	Landmark
Offset TVD Reference:	Offset Datum

Coordinates are relative to: SRC Wiedeman 22-5-4NBHZ
Coordinate System is US State Plane 1983, Colorado Northern Zone
Grid Convergence at Surface is: 0.45°



3-1-NCHZ, Wellbore #1, Plan #3 (9-24-14)		SRC Wiedeman 11-5-3NCHZ, Wellbore #1, Plan #3 (9-24-14)		Northridge 4KD (Exist.), Wellbore
3-3-NBHZ, Wellbore #1, Plan #3 (9-24-14)		SRC Kelly Farms A-4-3NHZ, Wellbore #1, Wellbore #1		Northridge 12-4D (Exist.), Wellbor
3-3-CHZ, Wellbore #1, Plan #2 (9-24-14)		SRC Kelly Farms A-4-3CHZ, Wellbore #1, Wellbore #1		Northridge 22-4D (Exist.), Wellbor
3-NBHZ, Wellbore #1, Plan #3 (9-24-14)		SRC Kelly Farms 22-4-3CHZ, Wellbore #1, Wellbore #1		Northridge 4AD (Exist.), Wellbore
3-4-CHZ, Wellbore #1, Plan #3 (9-24-14)		SRC Kelly Farms 12-4-3CHZ, Wellbore #1, Wellbore #1		SRC Wiedeman 22-5-4CHZ, Wellb