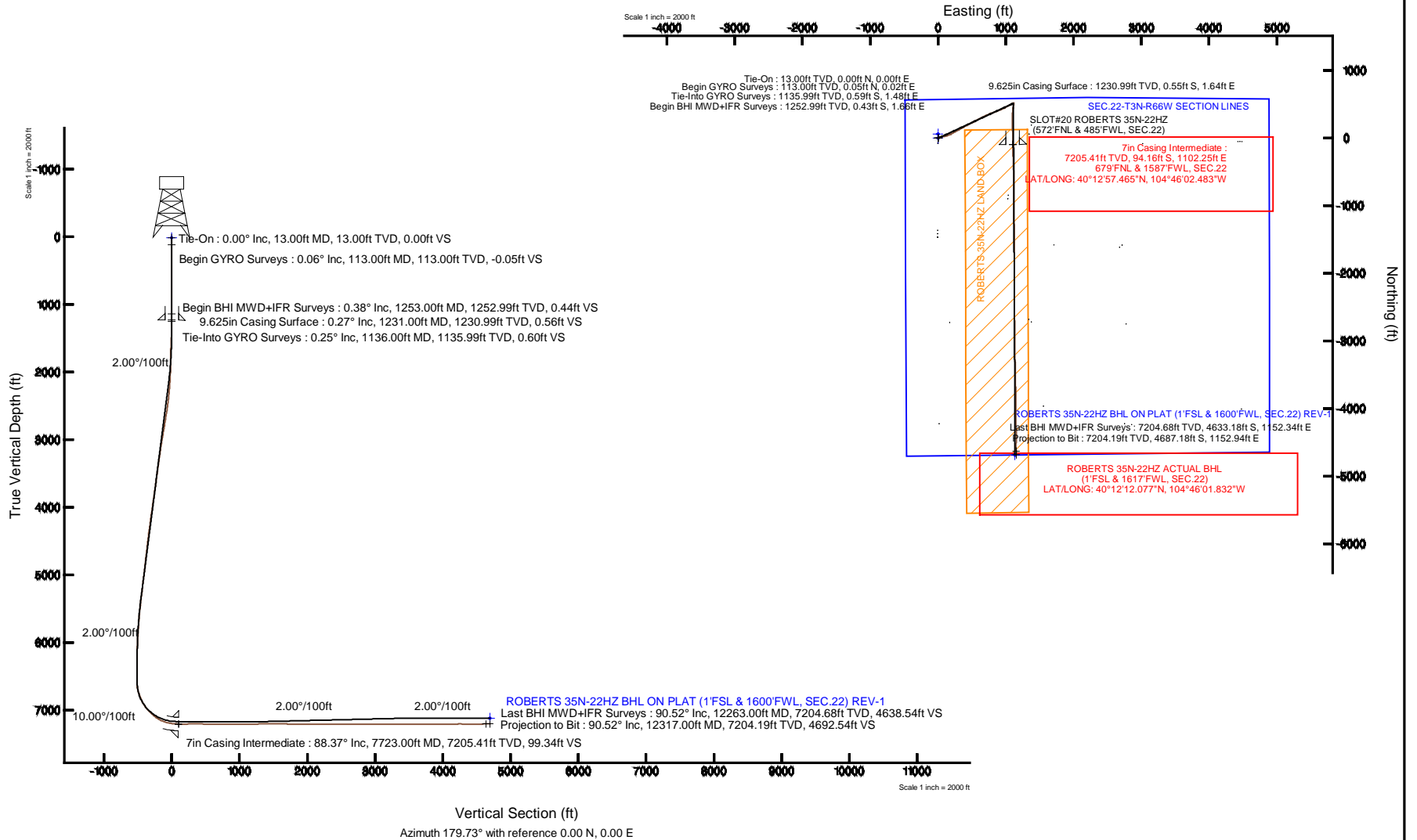


KERR-MCGEE OIL & GAS ONSHORE LP

Location: COLORADO Slot: SLOT#20 ROBERTS 35N-22HZ (572'FNL & 485'FWL, SEC.22)
 Field: WELD COUNTY (KERR MCGEE) Well: ROBERTS 35N-22HZ
 Facility: SEC.22-T3N-R66W Wellbore: ROBERTS 35N-22HZ PWB

Plot reference wellpath is ROBERTS 35N-22HZ (REV-B.0) PWP

True vertical depths are referenced to ENSIGN 145 (13KB) (RKB)	Grid System: NAD83 / Lambert Colorado SP, Northern Zone (501), US feet
Measured depths are referenced to ENSIGN 145 (13KB) (RKB)	North Reference: True north
ENSGN 145 (13KB) (RKB) to Mean Sea Level: 4898 feet	Scale: True distance
Mean Sea Level to Mud line (At Slot: SLOT#20 ROBERTS 35N-22HZ (572'FNL & 485'FWL, SEC.22)): 0 feet	Depths are in feet
Coordinates are in feet referenced to Slot	Created by: precin on 11/Sep/2014



REFERENCE WELLPATH IDENTIFICATION			
Operator	KERR-MCGEE OIL & GAS ONSHORE LP	Slot	SLOT#20 ROBERTS 35N-22HZ (572'FNL & 485'FWL, SEC.22)
Area	COLORADO	Well	ROBERTS 35N-22HZ
Field	WELD COUNTY (KERR MCGEE)	Wellbore	ROBERTS 35N-22HZ AWB
Facility	SEC.22-T3N-R66W		

REPORT SETUP INFORMATION			
Projection System	NAD83 / Lambert Colorado SP, Northern Zone (501), US feet	Software System	WellArchitect® 4.0.0
North Reference	True	User	Precain
Scale	0.999957	Report Generated	11/Sep/2014 at 08:58
Convergence at slot	n/a	Database/Source file	WellArchitectDB/ROBERTS_35N-22HZ_AWB.xml

WELLPATH LOCATION						
	Local coordinates		Grid coordinates		Geographic coordinates	
	North[ft]	East[ft]	Easting[US ft]	Northing[US ft]	Latitude	Longitude
Slot Location	849.25	-1039.77	3203497.52	1322447.68	40°12'58.396"N	104°46'16.691"W
Facility Reference Pt			3204544.22	1321607.09	40°12'50.004"N	104°46'03.288"W
Field Reference Pt			3197771.84	1268891.29	40°04'09.600"N	104°47'36.000"W

WELLPATH DATUM			
Calculation method	Minimum curvature	ENSIGN 145 (13'KB) (RKB) to Facility Vertical Datum	4898.00ft
Horizontal Reference Pt	Slot	ENSIGN 145 (13'KB) (RKB) to Mean Sea Level	4898.00ft
Vertical Reference Pt	ENSIGN 145 (13'KB) (RKB)	ENSIGN 145 (13'KB) (RKB) to Mud Line at Slot (SLOT#20 ROBERTS 35N-22HZ (572'FNL & 485'FWL, SEC.22))	4898.00ft
MD Reference Pt	ENSIGN 145 (13'KB) (RKB)	Section Origin	N 0.00, E 0.00 ft
Field Vertical Reference	Mean Sea Level	Section Azimuth	179.73°

REFERENCE WELLPATH IDENTIFICATION			
Operator	KERR-MCGEE OIL & GAS ONSHORE LP	Slot	SLOT#20 ROBERTS 35N-22HZ (572'FNL & 485'FWL, SEC.22)
Area	COLORADO	Well	ROBERTS 35N-22HZ
Field	WELD COUNTY (KERR MCGEE)	Wellbore	ROBERTS 35N-22HZ AWB
Facility	SEC.22-T3N-R66W		

WELLPATH DATA (139 stations) † = interpolated/extrapolated station

MD [ft]	Inclination [°]	Azimuth [°]	TVD [ft]	Vert Sect [ft]	North [ft]	East [ft]	Latitude	Longitude	DLS [°/100ft]	Comments
0.00†	0.000	18.990	0.00	0.00	0.00	0.00	40°12'58.396"N	104°46'16.691"W	0.00	
13.00	0.000	18.990	13.00	0.00	0.00	0.00	40°12'58.396"N	104°46'16.691"W	0.00	Tie-On
113.00	0.060	18.990	113.00	-0.05	0.05	0.02	40°12'58.396"N	104°46'16.691"W	0.06	Begin GYRO Surveys
213.00	0.280	138.800	213.00	0.09	-0.08	0.20	40°12'58.395"N	104°46'16.688"W	0.31	
313.00	0.260	179.240	313.00	0.50	-0.50	0.36	40°12'58.391"N	104°46'16.686"W	0.19	
413.00	0.160	5.610	413.00	0.59	-0.58	0.38	40°12'58.390"N	104°46'16.686"W	0.42	
513.00	0.470	76.990	513.00	0.36	-0.35	0.79	40°12'58.393"N	104°46'16.681"W	0.45	
613.00	0.210	180.520	613.00	0.45	-0.44	1.19	40°12'58.392"N	104°46'16.676"W	0.56	
713.00	0.260	348.780	713.00	0.41	-0.40	1.14	40°12'58.392"N	104°46'16.676"W	0.47	
813.00	0.220	79.390	812.99	0.15	-0.15	1.29	40°12'58.395"N	104°46'16.674"W	0.34	
913.00	0.360	179.960	912.99	0.43	-0.42	1.47	40°12'58.392"N	104°46'16.672"W	0.46	
1013.00	0.290	309.420	1012.99	0.58	-0.58	1.28	40°12'58.390"N	104°46'16.675"W	0.59	
1113.00	0.370	109.000	1112.99	0.53	-0.52	1.39	40°12'58.391"N	104°46'16.673"W	0.65	
1136.00	0.250	151.460	1135.99	0.60	-0.59	1.48	40°12'58.390"N	104°46'16.672"W	1.09	Tie-Into GYRO Surveys
1253.00	0.380	8.300	1252.99	0.44	-0.43	1.66	40°12'58.392"N	104°46'16.670"W	0.51	Begin BHI MWD+IFR Surveys
1346.00	1.820	46.570	1345.97	-0.88	0.89	2.78	40°12'58.405"N	104°46'16.655"W	1.66	
1440.00	3.490	50.350	1439.87	-3.71	3.74	6.07	40°12'58.433"N	104°46'16.613"W	1.79	
1627.00	6.800	67.490	1626.10	-11.52	11.61	20.68	40°12'58.511"N	104°46'16.424"W	1.93	
1721.00	7.670	74.600	1719.35	-15.26	15.41	31.87	40°12'58.548"N	104°46'16.280"W	1.33	
1814.00	8.240	87.310	1811.46	-17.16	17.37	44.51	40°12'58.568"N	104°46'16.117"W	1.98	
1908.00	9.700	88.530	1904.31	-17.61	17.89	59.16	40°12'58.573"N	104°46'15.928"W	1.57	
2002.00	11.120	80.500	1996.77	-19.23	19.59	76.02	40°12'58.590"N	104°46'15.711"W	2.16	
2095.00	12.750	74.540	2087.76	-23.36	23.81	94.75	40°12'58.631"N	104°46'15.470"W	2.20	
2282.00	14.750	71.930	2269.39	-36.05	36.69	137.28	40°12'58.759"N	104°46'14.921"W	1.12	
2465.00	16.820	65.150	2445.49	-54.19	55.05	183.46	40°12'58.940"N	104°46'14.326"W	1.51	
2646.00	18.990	60.490	2617.73	-79.47	80.56	232.86	40°12'59.192"N	104°46'13.689"W	1.44	
2826.00	18.760	60.610	2788.05	-107.86	109.19	283.57	40°12'59.475"N	104°46'13.036"W	0.13	
3006.00	18.740	61.130	2958.50	-135.79	137.36	334.11	40°12'59.753"N	104°46'12.384"W	0.09	
3186.00	17.880	61.690	3129.38	-162.62	164.43	383.76	40°13'00.021"N	104°46'11.744"W	0.49	
3366.00	16.910	61.770	3301.15	-187.89	189.91	431.15	40°13'00.273"N	104°46'11.133"W	0.54	
3546.00	16.840	62.550	3473.40	-212.07	214.31	477.35	40°13'00.514"N	104°46'10.538"W	0.13	
3726.00	15.970	61.890	3646.07	-235.55	238.00	522.33	40°13'00.748"N	104°46'09.958"W	0.49	
3816.00	17.780	63.430	3732.19	-247.42	249.98	545.54	40°13'00.866"N	104°46'09.659"W	2.07	
3906.00	18.010	61.590	3817.83	-260.07	262.75	570.07	40°13'00.992"N	104°46'09.342"W	0.68	
3996.00	16.370	59.890	3903.81	-272.94	275.73	593.28	40°13'01.121"N	104°46'09.043"W	1.91	
4086.00	17.370	65.950	3989.94	-284.67	287.57	616.52	40°13'01.238"N	104°46'08.744"W	2.25	
4176.00	19.220	64.340	4075.39	-296.44	299.46	642.15	40°13'01.355"N	104°46'08.413"W	2.13	
4266.00	17.920	63.090	4160.70	-309.00	312.14	667.85	40°13'01.480"N	104°46'08.082"W	1.51	
4356.00	16.390	63.490	4246.70	-320.83	324.08	691.56	40°13'01.598"N	104°46'07.776"W	1.71	
4446.00	17.650	64.900	4332.76	-332.17	335.53	715.28	40°13'01.712"N	104°46'07.471"W	1.47	
4536.00	18.320	67.440	4418.36	-343.27	346.75	740.70	40°13'01.822"N	104°46'07.143"W	1.15	
4626.00	17.020	67.340	4504.11	-353.65	357.25	765.91	40°13'01.926"N	104°46'06.818"W	1.44	
4716.00	17.240	68.510	4590.12	-363.50	367.21	790.48	40°13'02.025"N	104°46'06.501"W	0.45	
4806.00	18.620	70.210	4675.75	-373.12	376.96	816.41	40°13'02.121"N	104°46'06.167"W	1.64	
4896.00	17.700	69.240	4761.26	-382.72	386.68	842.72	40°13'02.217"N	104°46'05.828"W	1.08	

REFERENCE WELLPATH IDENTIFICATION			
Operator	KERR-MCGEE OIL & GAS ONSHORE LP	Slot	SLOT#20 ROBERTS 35N-22HZ (572'FNL & 485'FWL, SEC.22)
Area	COLORADO	Well	ROBERTS 35N-22HZ
Field	WELD COUNTY (KERR MCGEE)	Wellbore	ROBERTS 35N-22HZ AWB
Facility	SEC.22-T3N-R66W		

WELLPATH DATA (139 stations) † = interpolated/extrapolated station										
MD [ft]	Inclination [°]	Azimuth [°]	TVD [ft]	Vert Sect [ft]	North [ft]	East [ft]	Latitude	Longitude	DLS [°/100ft]	Comments
4986.00	15.990	67.870	4847.40	-392.12	396.20	867.00	40°13'02.311"N	104°46'05.515"W	1.95	
5076.00	16.450	66.820	4933.82	-401.70	405.88	890.20	40°13'02.407"N	104°46'05.216"W	0.61	
5166.00	17.430	65.880	5019.91	-412.11	416.41	914.22	40°13'02.511"N	104°46'04.906"W	1.13	
5256.00	16.750	66.260	5105.93	-422.73	427.14	938.39	40°13'02.617"N	104°46'04.595"W	0.77	
5346.00	15.400	66.450	5192.41	-432.61	437.13	961.22	40°13'02.716"N	104°46'04.300"W	1.50	
5436.00	15.500	63.040	5279.16	-442.74	447.36	982.89	40°13'02.817"N	104°46'04.021"W	1.02	
5525.00	14.880	62.130	5365.05	-453.38	458.09	1003.59	40°13'02.923"N	104°46'03.754"W	0.75	
5616.00	13.720	61.980	5453.23	-463.81	468.62	1023.45	40°13'03.027"N	104°46'03.498"W	1.28	
5706.00	12.140	63.340	5540.95	-472.99	477.89	1041.33	40°13'03.118"N	104°46'03.268"W	1.79	
5796.00	10.720	64.000	5629.16	-480.83	485.80	1057.31	40°13'03.196"N	104°46'03.062"W	1.58	
5886.00	9.360	63.120	5717.78	-487.74	492.78	1071.36	40°13'03.265"N	104°46'02.880"W	1.52	
5976.00	7.940	61.340	5806.75	-493.98	499.07	1083.35	40°13'03.328"N	104°46'02.726"W	1.61	
6066.00	6.880	59.000	5896.00	-499.69	504.83	1093.42	40°13'03.384"N	104°46'02.596"W	1.22	
6156.00	5.540	57.120	5985.47	-504.79	509.96	1101.69	40°13'03.435"N	104°46'02.489"W	1.51	
6246.00	4.510	56.700	6075.12	-509.06	514.26	1108.30	40°13'03.478"N	104°46'02.404"W	1.15	
6336.00	3.260	64.840	6164.92	-512.06	517.30	1113.57	40°13'03.508"N	104°46'02.336"W	1.51	
6426.00	1.840	42.940	6254.83	-514.19	519.44	1116.87	40°13'03.529"N	104°46'02.294"W	1.89	
6516.00	0.930	103.910	6344.80	-515.07	520.32	1118.57	40°13'03.538"N	104°46'02.272"W	1.79	
6606.00	0.890	102.590	6434.79	-514.73	520.00	1119.96	40°13'03.534"N	104°46'02.254"W	0.05	
6722.00	0.820	208.370	6550.79	-513.80	519.07	1120.44	40°13'03.525"N	104°46'02.248"W	1.18	
6786.00	1.840	195.280	6614.77	-512.41	517.67	1119.95	40°13'03.511"N	104°46'02.254"W	1.65	
6831.00	8.830	185.730	6659.55	-508.27	513.54	1119.42	40°13'03.470"N	104°46'02.261"W	15.60	
6876.00	15.440	186.530	6703.52	-498.88	504.14	1118.39	40°13'03.378"N	104°46'02.274"W	14.69	
6921.00	18.210	189.540	6746.59	-486.00	491.25	1116.54	40°13'03.250"N	104°46'02.298"W	6.45	
6966.00	19.600	191.370	6789.16	-471.68	476.92	1113.89	40°13'03.109"N	104°46'02.332"W	3.36	
7011.00	23.630	189.700	6830.98	-455.40	460.62	1110.88	40°13'02.948"N	104°46'02.371"W	9.06	
7056.00	26.970	189.290	6871.66	-436.45	441.65	1107.71	40°13'02.760"N	104°46'02.412"W	7.43	
7101.00	31.630	186.360	6910.90	-414.65	419.84	1104.76	40°13'02.545"N	104°46'02.450"W	10.83	
7146.00	35.510	185.130	6948.38	-389.91	395.09	1102.28	40°13'02.300"N	104°46'02.482"W	8.75	
7191.00	39.500	183.200	6984.08	-362.60	367.77	1100.31	40°13'02.030"N	104°46'02.507"W	9.24	
7237.00	43.340	183.270	7018.57	-332.23	337.39	1098.59	40°13'01.730"N	104°46'02.530"W	8.35	
7282.00	46.290	183.010	7050.48	-300.57	305.73	1096.86	40°13'01.417"N	104°46'02.552"W	6.57	
7327.00	49.710	180.340	7080.59	-267.16	272.31	1095.90	40°13'01.087"N	104°46'02.564"W	8.79	
7372.00	54.700	179.020	7108.16	-231.62	236.76	1096.12	40°13'00.735"N	104°46'02.562"W	11.33	
7417.00	59.060	178.570	7132.75	-193.94	199.09	1096.91	40°13'00.363"N	104°46'02.551"W	9.72	
7462.00	63.940	177.880	7154.21	-154.42	159.58	1098.14	40°12'59.973"N	104°46'02.535"W	10.93	
7507.00	69.870	176.750	7171.86	-113.08	118.25	1100.09	40°12'59.564"N	104°46'02.510"W	13.38	
7552.00	76.370	178.360	7184.92	-70.08	75.25	1101.91	40°12'59.139"N	104°46'02.487"W	14.84	
7597.00	80.710	180.090	7193.86	-25.99	31.16	1102.51	40°12'58.704"N	104°46'02.479"W	10.35	
7642.00	82.620	180.760	7200.38	18.53	-13.36	1102.17	40°12'58.264"N	104°46'02.484"W	4.49	
7675.00	86.850	179.970	7203.41	51.38	-46.21	1101.97	40°12'57.939"N	104°46'02.486"W	13.04	
7723.00†	88.365	179.343	7205.41	99.34	-94.16	1102.25	40°12'57.465"N	104°46'02.483"W	3.42	7" Casing Point
7796.00	90.670	178.390	7206.02	172.32	-167.14	1103.70	40°12'56.744"N	104°46'02.464"W	3.42	
7886.00	91.080	177.240	7204.65	262.26	-257.06	1107.13	40°12'55.855"N	104°46'02.420"W	1.36	
7976.00	90.120	178.160	7203.71	352.20	-346.98	1110.74	40°12'54.967"N	104°46'02.373"W	1.48	

REFERENCE WELLPATH IDENTIFICATION			
Operator	KERR-MCGEE OIL & GAS ONSHORE LP	Slot	SLOT#20 ROBERTS 35N-22HZ (572'FNL & 485'FWL, SEC.22)
Area	COLORADO	Well	ROBERTS 35N-22HZ
Field	WELD COUNTY (KERR MCGEE)	Wellbore	ROBERTS 35N-22HZ AWP
Facility	SEC.22-T3N-R66W		

WELLPATH DATA (139 stations)

MD [ft]	Inclination [°]	Azimuth [°]	TVD [ft]	Vert Sect [ft]	North [ft]	East [ft]	Latitude	Longitude	DLS [°/100ft]	Comments
8066.00	88.860	177.800	7204.51	442.15	-436.92	1113.91	40°12'54.078"N	104°46'02.332"W	1.46	
8156.00	88.360	179.200	7206.69	532.10	-526.86	1116.27	40°12'53.189"N	104°46'02.302"W	1.65	
8246.00	89.220	179.170	7208.59	622.07	-616.83	1117.55	40°12'52.300"N	104°46'02.286"W	0.96	
8335.00	89.690	179.920	7209.44	711.07	-705.83	1118.25	40°12'51.421"N	104°46'02.277"W	0.99	
8426.00	90.090	180.580	7209.61	802.06	-796.82	1117.86	40°12'50.522"N	104°46'02.282"W	0.85	
8516.00	90.950	180.280	7208.80	892.05	-886.82	1117.18	40°12'49.632"N	104°46'02.291"W	1.01	
8605.00	90.520	179.670	7207.65	981.04	-975.81	1117.22	40°12'48.753"N	104°46'02.290"W	0.84	
8695.00	90.430	178.360	7206.91	1071.03	-1065.79	1118.77	40°12'47.864"N	104°46'02.270"W	1.46	
8785.00	90.240	179.000	7206.38	1161.01	-1155.76	1120.84	40°12'46.975"N	104°46'02.244"W	0.74	
8875.00	90.990	179.310	7205.42	1251.00	-1245.75	1122.17	40°12'46.085"N	104°46'02.227"W	0.90	
8965.00	91.640	179.360	7203.35	1340.98	-1335.72	1123.21	40°12'45.196"N	104°46'02.213"W	0.72	
9055.00	90.800	179.790	7201.43	1430.96	-1425.69	1123.88	40°12'44.307"N	104°46'02.205"W	1.05	
9145.00	89.230	180.080	7201.41	1520.95	-1515.69	1123.98	40°12'43.418"N	104°46'02.203"W	1.77	
9235.00	88.950	179.820	7202.84	1610.94	-1605.68	1124.06	40°12'42.528"N	104°46'02.202"W	0.42	
9325.00	88.490	178.370	7204.85	1700.91	-1695.64	1125.48	40°12'41.639"N	104°46'02.184"W	1.69	
9415.00	89.560	179.630	7206.38	1790.89	-1785.61	1127.05	40°12'40.750"N	104°46'02.164"W	1.84	
9505.00	89.630	179.750	7207.02	1880.88	-1875.61	1127.54	40°12'39.861"N	104°46'02.158"W	0.15	
9595.00	89.010	179.180	7208.09	1970.88	-1965.60	1128.38	40°12'38.972"N	104°46'02.147"W	0.94	
9686.00	89.500	180.650	7209.27	2061.86	-2056.59	1128.51	40°12'38.073"N	104°46'02.145"W	1.70	
9776.00	89.250	180.190	7210.25	2151.85	-2146.58	1127.85	40°12'37.183"N	104°46'02.154"W	0.58	
9866.00	90.090	180.700	7210.77	2241.84	-2236.58	1127.16	40°12'36.294"N	104°46'02.163"W	1.09	
9956.00	89.720	180.360	7210.92	2331.83	-2326.57	1126.32	40°12'35.405"N	104°46'02.174"W	0.56	
10046.00	89.350	179.820	7211.65	2421.83	-2416.57	1126.18	40°12'34.515"N	104°46'02.176"W	0.73	
10136.00	90.400	179.520	7211.85	2511.83	-2506.56	1126.70	40°12'33.626"N	104°46'02.169"W	1.21	
10226.00	90.370	179.240	7211.24	2601.82	-2596.56	1127.67	40°12'32.737"N	104°46'02.156"W	0.31	
10316.00	89.720	178.150	7211.17	2691.81	-2686.53	1129.72	40°12'31.848"N	104°46'02.130"W	1.41	
10406.00	90.000	179.130	7211.39	2781.79	-2776.50	1131.86	40°12'30.958"N	104°46'02.103"W	1.13	
10496.00	90.620	179.130	7210.90	2871.78	-2866.49	1133.23	40°12'30.069"N	104°46'02.085"W	0.69	
10586.00	90.580	178.890	7209.96	2961.77	-2956.47	1134.78	40°12'29.180"N	104°46'02.065"W	0.27	
10676.00	89.410	179.090	7209.97	3051.76	-3046.46	1136.37	40°12'28.291"N	104°46'02.045"W	1.32	
10766.00	90.920	180.230	7209.71	3141.76	-3136.45	1136.90	40°12'27.401"N	104°46'02.038"W	2.10	
10856.00	90.590	180.020	7208.52	3231.75	-3226.44	1136.70	40°12'26.512"N	104°46'02.040"W	0.43	
10946.00	89.130	179.020	7208.74	3321.74	-3316.44	1137.46	40°12'25.623"N	104°46'02.031"W	1.97	
11036.00	90.640	179.750	7208.92	3411.74	-3406.43	1138.42	40°12'24.734"N	104°46'02.018"W	1.86	
11126.00	90.550	179.130	7207.99	3501.73	-3496.42	1139.30	40°12'23.844"N	104°46'02.007"W	0.70	
11216.00	90.270	177.970	7207.35	3591.71	-3586.39	1141.58	40°12'22.955"N	104°46'01.978"W	1.33	
11306.00	90.550	177.980	7206.70	3681.66	-3676.33	1144.76	40°12'22.066"N	104°46'01.937"W	0.31	
11396.00	89.900	178.170	7206.35	3771.62	-3766.28	1147.78	40°12'21.178"N	104°46'01.898"W	0.75	
11486.00	89.750	178.590	7206.62	3861.60	-3856.24	1150.33	40°12'20.289"N	104°46'01.865"W	0.50	
11576.00	91.040	179.820	7206.00	3951.59	-3946.22	1151.58	40°12'19.399"N	104°46'01.849"W	1.98	
11667.00	89.750	180.780	7205.38	4042.58	-4037.22	1151.10	40°12'18.500"N	104°46'01.855"W	1.77	
11757.00	90.150	180.180	7205.45	4132.57	-4127.21	1150.35	40°12'17.611"N	104°46'01.865"W	0.80	
11847.00	90.360	179.310	7205.05	4222.57	-4217.21	1150.75	40°12'16.721"N	104°46'01.860"W	0.99	
11937.00	89.220	178.700	7205.38	4312.56	-4307.20	1152.31	40°12'15.832"N	104°46'01.840"W	1.44	
12027.00	90.460	180.600	7205.63	4402.55	-4397.19	1152.86	40°12'14.943"N	104°46'01.833"W	2.52	

REFERENCE WELLPATH IDENTIFICATION			
Operator	KERR-MCGEE OIL & GAS ONSHORE LP	Slot	SLOT#20 ROBERTS 35N-22HZ (572'FNL & 485'FWL, SEC.22)
Area	COLORADO	Well	ROBERTS 35N-22HZ
Field	WELD COUNTY (KERR MCGEE)	Wellbore	ROBERTS 35N-22HZ AWB
Facility	SEC.22-T3N-R66W		

WELLPATH DATA (139 stations)										
MD [ft]	Inclination [°]	Azimuth [°]	TVD [ft]	Vert Sect [ft]	North [ft]	East [ft]	Latitude	Longitude	DLS [°/100ft]	Comments
12117.00	89.840	180.160	7205.40	4492.55	-4487.18	1152.26	40°12'14.054"N	104°46'01.841"W	0.84	
12207.00	90.460	180.080	7205.16	4582.54	-4577.18	1152.08	40°12'13.164"N	104°46'01.843"W	0.69	
12263.00	90.520	179.370	7204.68	4638.54	-4633.18	1152.34	40°12'12.611"N	104°46'01.840"W	1.27	Last BHI MWD+IFR Surveys
12317.00	90.520	179.370	7204.19	4692.54	-4687.18	1152.94	40°12'12.077"N	104°46'01.832"W	0.00	Projection to Bit

HOLE & CASING SECTIONS - Ref Wellbore: ROBERTS 35N-22HZ AWB Ref Wellpath: ROBERTS 35N-22HZ AWP									
String/Diameter	Start MD [ft]	End MD [ft]	Interval [ft]	Start TVD [ft]	End TVD [ft]	Start N/S [ft]	Start E/W [ft]	End N/S [ft]	End E/W [ft]
13.5in Open Hole	13.00	1240.00	1227.00	13.00	1239.99	0.00	0.00	-0.51	1.65
9.625in Casing Surface	13.00	1231.00	1218.00	13.00	1230.99	0.00	0.00	-0.55	1.64
8.75in Open Hole	1240.00	7738.00	6498.00	1239.99	7205.78	-0.51	1.65	-109.16	1102.45
7in Casing Intermediate	13.00	7723.00	7710.00	13.00	7205.41	0.00	0.00	-94.16	1102.25
6.125in Open Hole	7738.00	12317.00	4579.00	7205.78	7204.19	-109.16	1102.45	-4687.18	1152.94

TARGETS									
Name	MD [ft]	TVD [ft]	North [ft]	East [ft]	Grid East [US ft]	Grid North [US ft]	Latitude	Longitude	Shape
SEC.22-T3N-R66W SECTION LINES		0.00	59.70	-0.23	3203496.79	1322507.38	40°12'58.986"N	104°46'16.694"W	polygon
ROBERTS 35N-22HZ LAND BOX		13.00	-0.04	0.02	3203497.53	1322447.64	40°12'58.396"N	104°46'16.691"W	polygon
ROBERTS 35N-22HZ BHL ON PLAT (1'FSL & 1600'FWL, SEC.22) REV-1		7118.00	-4687.46	1136.61	3204672.56	1317769.93	40°12'12.074"N	104°46'02.042"W	point

WELLPATH COMPOSITION - Ref Wellbore: ROBERTS 35N-22HZ AWB Ref Wellpath: ROBERTS 35N-22HZ AWP				
Start MD [ft]	End MD [ft]	Positional Uncertainty Model	Log Name/Comment	Wellbore
13.00	1136.00	Generic gyro - continuous (Standard)	MS ENERGY SERVICES <113-1123>	ROBERTS 35N-22HZ AWB
1136.00	7675.00	NaviTrak (MAGCORR,IFR)	BHI MWD+IFR SURVEYS 8 3/4" HOLE <1253-7675>	ROBERTS 35N-22HZ AWB
7675.00	12263.00	NaviTrak (MAGCORR,IFR)	BHI MWD+IFR SURVEYS 6 1/8" HOLE <7796-12263>	ROBERTS 35N-22HZ AWB
12263.00	12317.00	Blind Drilling (std)	Projection to bit	ROBERTS 35N-22HZ AWB

Actual Wellpath Report

ROBERTS 35N-22HZ AWP

Page 6 of 6

REFERENCE WELLPATH IDENTIFICATION			
Operator	KERR-MCGEE OIL & GAS ONSHORE LP	Slot	SLOT#20 ROBERTS 35N-22HZ (572'FNL & 485'FWL, SEC.22)
Area	COLORADO	Well	ROBERTS 35N-22HZ
Field	WELD COUNTY (KERR MCGEE)	Wellbore	ROBERTS 35N-22HZ AWB
Facility	SEC.22-T3N-R66W		

WELLPATH COMMENTS				
MD [ft]	Inclination [°]	Azimuth [°]	TVD [ft]	Comment
13.00	0.000	18.990	13.00	Tie-On
113.00	0.060	18.990	113.00	Begin GYRO Surveys
1136.00	0.250	151.460	1135.99	Tie-Into GYRO Surveys
1253.00	0.380	8.300	1252.99	Begin BHI MWD+IFR Surveys
7723.00	88.365	179.343	7205.41	7" Casing Point
12263.00	90.520	179.370	7204.68	Last BHI MWD+IFR Surveys
12317.00	90.520	179.370	7204.19	Projection to Bit