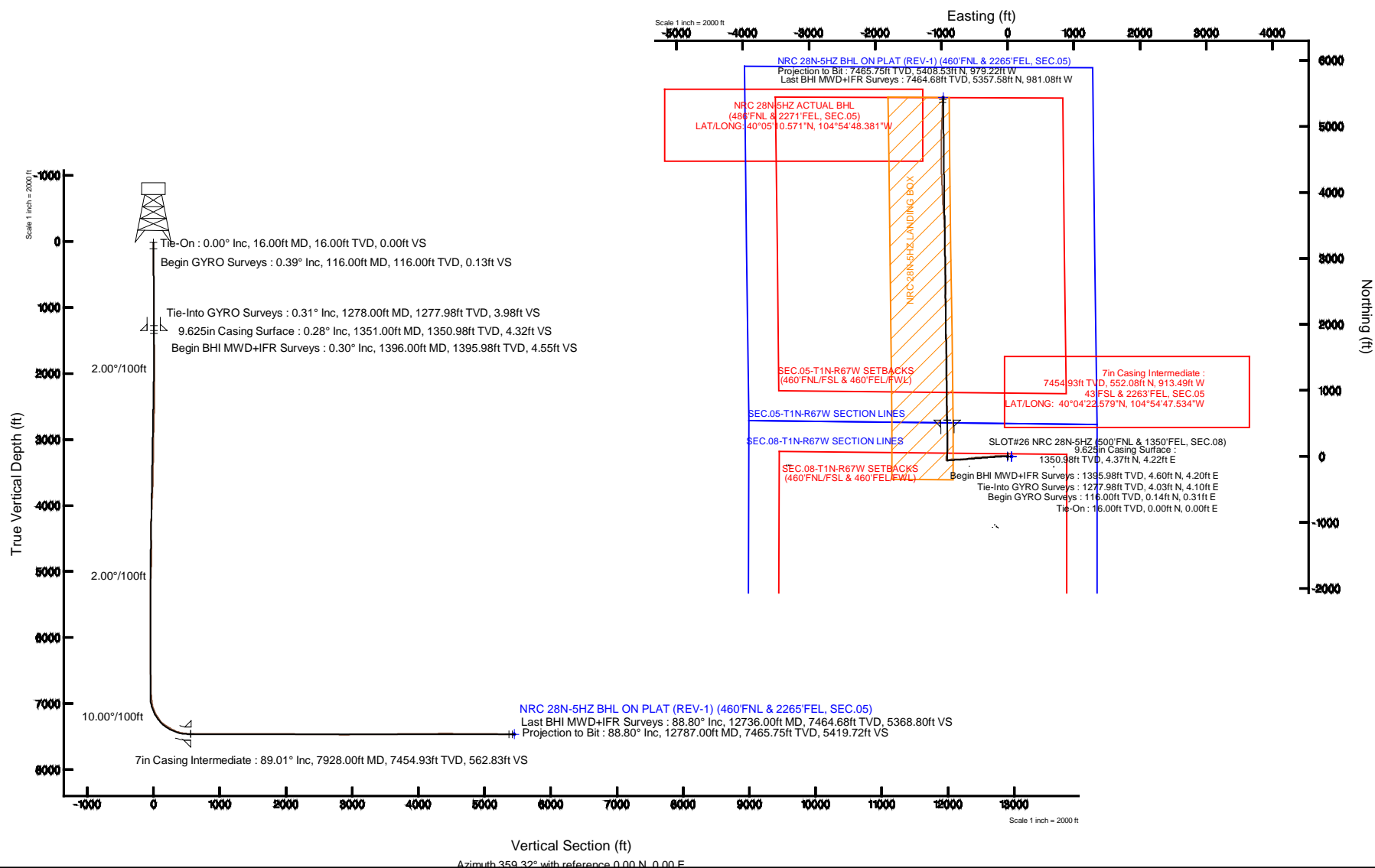


Location:	COLORADO	Slot:	SLOT#26 NRC 28N-5HZ (500'FNL & 1350'FEL, SEC.08)
Field:	WELD COUNTY (KERR MCGEE)	Well:	NRC 28N-5HZ
Facility:	SEC.08-T1N-R67W	Wellbore:	NRC 28N-5HZ PWB

Plot reference wellpath is NRC 28N-5HZ PVP (REV-A,0)	
True vertical depths are referenced to XTREME 23 (16KB) (RKB)	Grid System: NAD83 / Lambert Colorado SP, Northern Zone (501), US feet
Measured depths are referenced to XTREME 23 (16KB) (RKB)	North Reference: True north
XTREME 23 (16KB) (RKB) to Mean Sea Level: 5025 feet	Scale: True distance
Mean Sea Level to Mud line (At Slot: SLO7626 NRC 28N-5HZ (500FNL & 1350FEL, SEC 08)): 0 feet	Depths are in feet
Coordinates are in feet referenced to Slot	Created by: cecselin on 12/Dec/2014



Actual Wellpath Report

NRC 28N-5HZ AWP

Page 1 of 6

REFERENCE WELLPATH IDENTIFICATION			
Operator	KERR-MCGEE OIL & GAS ONSHORE LP	Slot	SLOT#26 NRC 28N-5HZ (500'FNL & 1350'FEL, SEC.08)
Area	COLORADO	Well	NRC 28N-5HZ
Field	WELD COUNTY (KERR MCGEE)	Wellbore	NRC 28N-5HZ AWB
Facility	SEC.08-T1N-R67W		

REPORT SETUP INFORMATION			
Projection System	NAD83 / Lambert Colorado SP, Northern Zone (501), US feet	Software System	WellArchitect® 4.0.0
North Reference	True	User	Precain
Scale	0.999962	Report Generated	12/Sep/2014 at 10:39
Convergence at slot	n/a	Database/Source file	WellArchitectDB/NRC_28N-5HZ_AWB.xml

WELLPATH LOCATION						
	Local coordinates		Grid coordinates		Geographic coordinates	
	North[ft]	East[ft]	Easting[US ft]	Northing[US ft]	Latitude	Longitude
Slot Location	3737.32	58.00	3165133.16	1269413.90	40°04'17.123"N	104°54'35.783"W
Facility Reference Pt			3165100.03	1265676.42	40°03'40.190"N	104°54'36.529"W
Field Reference Pt			3197771.84	1268891.29	40°04'09.600"N	104°47'36.000"W

WELLPATH DATUM			
Calculation method	Minimum curvature	XTREME 23 (16'KB) (RKB) to Facility Vertical Datum	5025.00ft
Horizontal Reference Pt	Slot	XTREME 23 (16'KB) (RKB) to Mean Sea Level	5025.00ft
Vertical Reference Pt	XTREME 23 (16'KB) (RKB)	XTREME 23 (16'KB) (RKB) to Mud Line at Slot (SLOT#26 NRC 28N-5HZ (500'FNL & 1350'FEL, SEC.08))	5025.00ft
MD Reference Pt	XTREME 23 (16'KB) (RKB)	Section Origin	N 0.00, E 0.00 ft
Field Vertical Reference	Mean Sea Level	Section Azimuth	359.32°

Actual Wellpath Report

NRC 28N-5HZ AWP

Page 2 of 6

REFERENCE WELLPATH IDENTIFICATION			
Operator	KERR-MCGEE OIL & GAS ONSHORE LP	Slot	SLOT#26 NRC 28N-5HZ (500'FNL & 1350'FEL, SEC.08)
Area	COLORADO	Well	NRC 28N-5HZ
Field	WELD COUNTY (KERR MCGEE)	Wellbore	NRC 28N-5HZ AWB
Facility	SEC.08-T1N-R67W		

WELLPATH DATA (123 stations) † = interpolated/extrapolated station

MD [ft]	Inclination [°]	Azimuth [°]	TVD [ft]	Vert Sect [ft]	North [ft]	East [ft]	Latitude	Longitude	Closure Dist [ft]	Closure Dir [°]	DLS [°/100ft]	Comments
0.00†	0.000	66.470	0.00	0.00	0.00	0.00	40°04'17.123"N	104°54'35.783"W	0.00	0.000	0.00	
16.00	0.000	66.470	16.00	0.00	0.00	0.00	40°04'17.123"N	104°54'35.783"W	0.00	0.000	0.00	Tie-On
116.00	0.390	66.470	116.00	0.13	0.14	0.31	40°04'17.124"N	104°54'35.779"W	0.34	66.470	0.39	Begin GYRO Surveys
216.00	0.430	55.810	216.00	0.47	0.48	0.93	40°04'17.128"N	104°54'35.771"W	1.05	62.686	0.09	
316.00	0.310	34.280	315.99	0.90	0.92	1.40	40°04'17.132"N	104°54'35.765"W	1.67	56.723	0.18	
416.00	0.300	337.240	415.99	1.36	1.38	1.45	40°04'17.137"N	104°54'35.764"W	2.00	46.343	0.29	
516.00	0.260	23.500	515.99	1.81	1.83	1.44	40°04'17.141"N	104°54'35.765"W	2.33	38.129	0.22	
616.00	0.370	60.070	615.99	2.18	2.20	1.81	40°04'17.145"N	104°54'35.760"W	2.85	39.403	0.22	
716.00	0.350	49.020	715.99	2.53	2.56	2.32	40°04'17.148"N	104°54'35.753"W	3.46	42.140	0.07	
816.00	0.220	71.340	815.99	2.79	2.82	2.73	40°04'17.151"N	104°54'35.748"W	3.93	44.040	0.17	
916.00	0.320	51.400	915.99	3.02	3.06	3.13	40°04'17.153"N	104°54'35.743"W	4.38	45.661	0.14	
1016.00	0.240	49.800	1015.99	3.33	3.37	3.51	40°04'17.156"N	104°54'35.738"W	4.86	46.168	0.08	
1116.00	0.130	39.980	1115.98	3.55	3.59	3.74	40°04'17.158"N	104°54'35.735"W	5.19	46.180	0.11	
1216.00	0.200	43.590	1215.98	3.76	3.80	3.94	40°04'17.161"N	104°54'35.732"W	5.47	45.969	0.07	
1278.00	0.310	31.330	1277.98	3.98	4.03	4.10	40°04'17.163"N	104°54'35.730"W	5.74	45.501	0.20	Tie-Into GYRO Surveys
1396.00	0.300	349.000	1395.98	4.55	4.60	4.20	40°04'17.168"N	104°54'35.729"W	6.23	42.413	0.19	Begin BHI MWD+IFR Surveys
1458.00	1.800	330.400	1457.97	5.56	5.61	3.69	40°04'17.178"N	104°54'35.736"W	6.71	33.359	2.45	
1553.00	2.800	316.600	1552.89	8.57	8.59	1.36	40°04'17.208"N	104°54'35.765"W	8.70	9.000	1.20	
1643.00	3.800	284.600	1642.75	10.98	10.94	-3.04	40°04'17.231"N	104°54'35.822"W	11.35	344.489	2.29	
1734.00	4.900	276.700	1733.49	12.27	12.15	-9.81	40°04'17.243"N	104°54'35.909"W	15.62	321.079	1.37	
1826.00	6.500	267.600	1825.03	12.62	12.39	-18.92	40°04'17.245"N	104°54'36.026"W	22.62	303.228	1.99	
1919.00	7.500	272.500	1917.34	12.80	12.44	-30.24	40°04'17.246"N	104°54'36.172"W	32.70	292.356	1.25	
2011.00	8.700	263.400	2008.42	12.41	11.90	-43.16	40°04'17.241"N	104°54'36.338"W	44.77	285.417	1.91	
2103.00	10.100	269.000	2099.19	11.65	10.96	-58.13	40°04'17.231"N	104°54'36.531"W	59.16	280.677	1.82	
2287.00	12.300	269.700	2279.67	11.68	10.58	-93.87	40°04'17.228"N	104°54'36.990"W	94.46	276.428	1.20	
2380.00	14.200	268.600	2370.19	11.61	10.25	-115.18	40°04'17.224"N	104°54'37.265"W	115.63	275.083	2.06	
2472.00	16.200	269.600	2458.97	11.53	9.88	-139.30	40°04'17.221"N	104°54'37.575"W	139.65	274.057	2.19	
2565.00	17.700	265.100	2547.93	10.55	8.58	-166.36	40°04'17.208"N	104°54'37.923"W	166.58	272.953	2.14	
2658.00	16.400	264.700	2636.84	8.45	6.16	-193.52	40°04'17.184"N	104°54'38.272"W	193.61	271.824	1.40	
2749.00	17.200	264.500	2723.96	6.28	3.69	-219.70	40°04'17.159"N	104°54'38.609"W	219.73	270.961	0.88	
2840.00	17.900	264.300	2810.72	3.93	1.01	-247.01	40°04'17.133"N	104°54'38.960"W	247.01	270.233	0.77	
2933.00	18.200	265.900	2899.14	1.81	-1.45	-275.72	40°04'17.109"N	104°54'39.330"W	275.72	269.698	0.62	
3025.00	18.100	265.800	2986.57	0.07	-3.53	-304.30	40°04'17.088"N	104°54'39.697"W	304.32	269.336	0.11	
3118.00	17.600	266.000	3075.09	-1.63	-5.56	-332.74	40°04'17.068"N	104°54'40.063"W	332.78	269.042	0.54	
3302.00	16.000	267.100	3251.23	-4.23	-8.79	-385.82	40°04'17.036"N	104°54'40.746"W	385.92	268.695	0.89	
3387.00	15.900	266.500	3332.96	-5.26	-10.09	-409.14	40°04'17.023"N	104°54'41.046"W	409.26	268.587	0.23	
3471.00	16.700	266.600	3413.58	-6.40	-11.51	-432.67	40°04'17.009"N	104°54'41.348"W	432.82	268.476	0.95	
3556.00	15.800	263.300	3495.19	-8.19	-13.58	-456.36	40°04'16.989"N	104°54'41.653"W	456.56	268.295	1.52	
3642.00	14.200	267.400	3578.26	-9.77	-15.43	-478.52	40°04'16.970"N	104°54'41.938"W	478.77	268.153	2.23	
3728.00	16.000	264.300	3661.28	-11.17	-17.08	-500.86	40°04'16.954"N	104°54'42.226"W	501.15	268.046	2.29	
3813.00	15.400	260.200	3743.12	-13.98	-20.17	-523.63	40°04'16.924"N	104°54'42.519"W	524.02	267.794	1.48	
3899.00	15.300	260.300	3826.05	-17.57	-24.02	-546.07	40°04'16.886"N	104°54'42.807"W	546.60	267.481	0.12	
3984.00	16.600	262.200	3907.77	-20.84	-27.56	-569.16	40°04'16.851"N	104°54'43.104"W	569.82	267.228	1.65	
4070.00	14.700	260.800	3990.58	-23.98	-30.97	-592.10	40°04'16.817"N	104°54'43.399"W	592.91	267.005	2.25	
4156.00	14.300	256.600	4073.84	-27.93	-35.18	-613.20	40°04'16.775"N	104°54'43.671"W	614.21	266.716	1.31	

REFERENCE WELLPATH IDENTIFICATION

Operator	KERR-MCGEE OIL & GAS ONSHORE LP	Slot	SLOT#26 NRC 28N-5HZ (500'FNL & 1350'FEL, SEC.08)
Area	COLORADO	Well	NRC 28N-5HZ
Field	WELD COUNTY (KERR MCGEE)	Wellbore	NRC 28N-5HZ AWB
Facility	SEC.08-T1N-R67W		

WELLPATH DATA (123 stations) † = interpolated/extrapolated station

MD [ft]	Inclination [°]	Azimuth [°]	TVD [ft]	Vert Sect [ft]	North [ft]	East [ft]	Latitude	Longitude	Closure Dist [ft]	Closure Dir [°]	DLS [°/100ft]	Comments
4241.00	13.500	254.500	4156.36	-32.78	-40.26	-632.98	40°04'16.725"N	104°54'43.925"W	634.26	266.360	1.11	
4327.00	15.900	263.800	4239.55	-36.49	-44.22	-654.37	40°04'16.686"N	104°54'44.200"W	655.86	266.134	3.91	
4411.00	18.100	269.500	4319.88	-37.55	-45.58	-678.86	40°04'16.673"N	104°54'44.515"W	680.39	266.159	3.28	
4496.00	16.700	269.900	4400.98	-37.39	-45.71	-704.28	40°04'16.671"N	104°54'44.842"W	705.76	266.286	1.65	
4581.00	16.900	273.800	4482.36	-36.30	-44.92	-728.82	40°04'16.679"N	104°54'45.158"W	730.20	266.473	1.35	
4666.00	14.800	273.500	4564.12	-34.55	-43.43	-751.98	40°04'16.694"N	104°54'45.456"W	753.24	266.694	2.47	
4751.00	15.100	276.000	4646.25	-32.47	-41.61	-773.83	40°04'16.712"N	104°54'45.737"W	774.95	266.922	0.84	
4836.00	16.800	270.800	4727.98	-30.86	-40.29	-797.13	40°04'16.725"N	104°54'46.036"W	798.15	267.107	2.61	
4921.00	15.800	264.700	4809.56	-31.48	-41.18	-820.94	40°04'16.716"N	104°54'46.343"W	821.97	267.128	2.33	
5006.00	13.300	262.300	4891.83	-33.61	-43.56	-842.15	40°04'16.692"N	104°54'46.616"W	843.28	267.039	3.02	
5092.00	11.100	256.400	4975.89	-36.67	-46.83	-860.00	40°04'16.660"N	104°54'46.845"W	861.28	266.883	2.94	
5177.00	9.200	254.200	5059.55	-40.27	-50.61	-874.50	40°04'16.623"N	104°54'47.032"W	875.96	266.688	2.28	
5262.00	7.800	252.200	5143.62	-43.74	-54.22	-886.53	40°04'16.587"N	104°54'47.186"W	888.18	266.500	1.68	
5348.00	6.200	259.300	5228.98	-46.27	-56.87	-896.65	40°04'16.561"N	104°54'47.317"W	898.45	266.371	2.11	
5433.00	3.800	265.700	5313.65	-47.25	-57.93	-903.97	40°04'16.550"N	104°54'47.411"W	905.82	266.333	2.89	
5518.00	2.300	269.700	5398.53	-47.41	-58.15	-908.48	40°04'16.548"N	104°54'47.469"W	910.34	266.337	1.78	
5603.00	0.600	319.700	5483.50	-47.06	-57.82	-910.47	40°04'16.551"N	104°54'47.494"W	912.31	266.366	2.32	
6028.00	0.700	275.800	5908.47	-45.05	-55.86	-914.50	40°04'16.571"N	104°54'47.546"W	916.20	266.504	0.12	
6454.00	0.900	289.900	6334.43	-43.58	-54.46	-920.23	40°04'16.585"N	104°54'47.620"W	921.84	266.613	0.07	
6795.00	0.300	297.600	6675.41	-42.22	-53.14	-923.54	40°04'16.598"N	104°54'47.663"W	925.07	266.707	0.18	
6965.00	4.000	342.900	6845.26	-36.32	-47.26	-925.68	40°04'16.656"N	104°54'47.690"W	926.88	267.077	2.23	
7050.00	4.900	346.000	6930.01	-29.94	-40.90	-927.43	40°04'16.719"N	104°54'47.713"W	928.33	267.475	1.10	
7136.00	10.500	0.100	7015.20	-18.52	-29.49	-928.30	40°04'16.831"N	104°54'47.724"W	928.77	268.180	6.82	
7221.00	22.700	13.300	7096.53	5.23	-5.69	-924.50	40°04'17.067"N	104°54'47.675"W	924.52	269.647	14.93	
7306.00	30.800	14.200	7172.37	42.24	31.43	-915.38	40°04'17.433"N	104°54'47.558"W	915.92	271.966	9.54	
7391.00	37.600	7.500	7242.66	89.01	78.31	-906.64	40°04'17.897"N	104°54'47.445"W	910.02	274.936	9.13	
7476.00	51.000	1.700	7303.38	147.98	137.32	-902.25	40°04'18.480"N	104°54'47.389"W	912.64	278.654	16.46	
7561.00	58.200	0.200	7352.59	217.19	206.55	-901.15	40°04'19.164"N	104°54'47.375"W	924.51	282.910	8.59	
7645.00	61.600	357.800	7394.71	289.84	279.19	-902.44	40°04'19.882"N	104°54'47.391"W	944.64	287.191	4.74	
7730.00	71.600	356.100	7428.43	367.68	356.99	-906.63	40°04'20.651"N	104°54'47.445"W	974.38	291.492	11.91	
7816.00	81.500	357.000	7448.41	451.12	440.37	-911.64	40°04'21.475"N	104°54'47.510"W	1012.43	295.783	11.56	
7858.00	87.000	359.500	7452.62	492.88	482.12	-912.91	40°04'21.887"N	104°54'47.526"W	1032.40	297.839	14.37	
7893.00	88.200	359.600	7454.08	527.85	517.09	-913.19	40°04'22.233"N	104°54'47.530"W	1049.43	299.521	3.44	
7928.00†	89.014	359.396	7454.93	562.83	552.08	-913.49	40°04'22.579"N	104°54'47.534"W	1067.36	301.147	2.40	7" Casing Point
7979.00	90.200	359.100	7455.28	613.83	603.07	-914.16	40°04'23.083"N	104°54'47.542"W	1095.17	303.413	2.40	
8064.00	90.700	359.900	7454.62	698.83	688.07	-914.91	40°04'23.922"N	104°54'47.552"W	1144.77	306.945	1.11	
8149.00	89.100	359.300	7454.76	783.82	773.06	-915.50	40°04'24.762"N	104°54'47.559"W	1198.23	310.178	2.01	
8318.00	89.400	359.300	7456.98	952.81	942.03	-917.56	40°04'26.432"N	104°54'47.586"W	1315.05	315.754	0.18	
8489.00	90.200	359.200	7457.57	1123.81	1113.02	-919.80	40°04'28.122"N	104°54'47.615"W	1443.90	320.430	0.47	
8659.00	89.800	359.800	7457.57	1293.80	1283.01	-921.29	40°04'29.802"N	104°54'47.634"W	1579.52	324.319	0.42	
8830.00	90.500	359.800	7457.12	1464.80	1454.01	-921.88	40°04'31.492"N	104°54'47.642"W	1721.63	327.624	0.41	
9000.00	90.900	358.200	7455.05	1634.78	1623.96	-924.85	40°04'33.171"N	104°54'47.680"W	1868.85	330.338	0.97	
9171.00	89.500	358.900	7454.45	1805.75	1794.90	-929.18	40°04'34.860"N	104°54'47.736"W	2021.15	332.631	0.92	
9342.00	89.000	359.000	7456.69	1976.74	1965.86	-932.31	40°04'36.550"N	104°54'47.776"W	2175.73	334.627	0.30	
9512.00	88.200	358.800	7460.84	2146.68	2135.77	-935.57	40°04'38.229"N	104°54'47.818"W	2331.70	336.344	0.49	

REFERENCE WELLPATH IDENTIFICATION											
Operator	KERR-MCGEE OIL & GAS ONSHORE LP						Slot	SLOT#26 NRC 28N-5HZ (500'FNL & 1350'FEL, SEC.08)			
Area	COLORADO						Well	NRC 28N-5HZ			
Field	WELD COUNTY (KERR MCGEE)						Wellbore	NRC 28N-5HZ AWB			
Facility	SEC.08-T1N-R67W										

WELLPATH DATA (123 stations)

MD [ft]	Inclination [°]	Azimuth [°]	TVD [ft]	Vert Sect [ft]	North [ft]	East [ft]	Latitude	Longitude	Closure Dist [ft]	Closure Dir [°]	DLS [°/100ft]	Comments
9683.00	89.100	359.600	7464.87	2317.63	2306.71	-937.96	40°04'39.918"N	104°54'47.849"W	2490.11	337.872	0.70	
9768.00	90.400	0.400	7465.24	2402.62	2391.70	-937.96	40°04'40.758"N	104°54'47.849"W	2569.05	338.586	1.80	
9854.00	89.700	0.200	7465.17	2488.61	2477.70	-937.51	40°04'41.608"N	104°54'47.843"W	2649.14	339.274	0.85	
9939.00	90.000	0.200	7465.39	2573.59	2562.70	-937.21	40°04'42.448"N	104°54'47.840"W	2728.70	339.912	0.35	
10024.00	89.400	359.900	7465.83	2658.59	2647.70	-937.14	40°04'43.288"N	104°54'47.839"W	2808.65	340.509	0.79	
10110.00	89.000	359.600	7467.04	2744.58	2733.69	-937.51	40°04'44.138"N	104°54'47.844"W	2889.98	341.071	0.58	
10195.00	89.400	358.800	7468.22	2829.57	2818.67	-938.70	40°04'44.977"N	104°54'47.859"W	2970.87	341.581	1.05	
10280.00	90.200	358.000	7468.52	2914.55	2903.64	-941.07	40°04'45.817"N	104°54'47.889"W	3052.33	342.042	1.33	
10365.00	91.300	358.600	7467.41	2999.53	2988.59	-943.59	40°04'46.657"N	104°54'47.922"W	3134.01	342.477	1.47	
10535.00	90.100	358.500	7465.33	3169.50	3158.52	-947.89	40°04'48.336"N	104°54'47.977"W	3297.69	343.295	0.71	
10620.00	91.100	0.200	7464.44	3254.49	3243.51	-948.86	40°04'49.176"N	104°54'47.990"W	3379.45	343.694	2.32	
10705.00	90.000	359.400	7463.62	3339.48	3328.50	-949.16	40°04'50.016"N	104°54'47.994"W	3461.19	344.084	1.60	
10791.00	90.300	358.500	7463.40	3425.48	3414.48	-950.73	40°04'50.865"N	104°54'48.014"W	3544.37	344.441	1.10	
10876.00	90.300	356.600	7462.95	3510.43	3499.40	-954.37	40°04'51.705"N	104°54'48.061"W	3627.21	344.745	2.24	
10960.00	91.000	356.300	7462.00	3594.32	3583.23	-959.57	40°04'52.533"N	104°54'48.128"W	3709.49	345.008	0.91	
11045.00	90.800	356.100	7460.67	3679.18	3668.04	-965.20	40°04'53.371"N	104°54'48.200"W	3792.90	345.258	0.33	
11215.00	90.600	356.400	7458.59	3848.93	3837.66	-976.32	40°04'55.047"N	104°54'48.343"W	3959.90	345.727	0.21	
11300.00	90.400	358.100	7457.85	3933.86	3922.55	-980.39	40°04'55.886"N	104°54'48.396"W	4043.22	345.967	2.01	
11385.00	90.900	356.800	7456.88	4018.81	4007.46	-984.18	40°04'56.725"N	104°54'48.445"W	4126.54	346.202	1.64	
11471.00	90.300	357.600	7455.98	4104.75	4093.35	-988.38	40°04'57.574"N	104°54'48.499"W	4210.99	346.425	1.16	
11556.00	90.700	356.900	7455.24	4189.69	4178.25	-992.45	40°04'58.413"N	104°54'48.551"W	4294.50	346.638	0.95	
11642.00	91.200	357.800	7453.81	4275.62	4264.15	-996.43	40°04'59.262"N	104°54'48.602"W	4379.02	346.847	1.20	
11727.00	90.800	358.500	7452.33	4360.59	4349.09	-999.17	40°05'00.101"N	104°54'48.638"W	4462.39	347.061	0.95	
11812.00	89.400	358.700	7452.18	4445.58	4434.06	-1001.25	40°05'00.941"N	104°54'48.664"W	4545.70	347.276	1.66	
11896.00	89.000	359.500	7453.36	4529.57	4518.04	-1002.57	40°05'01.771"N	104°54'48.681"W	4627.94	347.489	1.06	
11981.00	89.100	0.300	7454.76	4614.56	4603.03	-1002.72	40°05'02.611"N	104°54'48.683"W	4710.98	347.711	0.95	
12066.00	88.800	0.500	7456.32	4699.53	4688.01	-1002.12	40°05'03.451"N	104°54'48.676"W	4793.93	347.934	0.42	
12151.00	89.200	0.900	7457.81	4784.49	4772.99	-1001.09	40°05'04.290"N	104°54'48.662"W	4876.85	348.155	0.67	
12237.00	90.000	1.600	7458.41	4870.44	4858.97	-999.21	40°05'05.140"N	104°54'48.638"W	4960.65	348.380	1.24	
12407.00	89.800	2.200	7458.70	5040.26	5028.88	-993.57	40°05'06.819"N	104°54'48.566"W	5126.09	348.824	0.37	
12577.00	88.600	2.200	7461.08	5210.03	5198.73	-987.05	40°05'08.498"N	104°54'48.482"W	5291.60	349.250	0.71	
12736.00	88.800	2.100	7464.68	5368.80	5357.58	-981.08	40°05'10.067"N	104°54'48.405"W	5446.67	349.623	0.14	Last BHI MWD+IFR Surveys
12787.00	88.800	2.100	7465.75	5419.72	5408.53	-979.22	40°05'10.571"N	104°54'48.381"W	5496.46	349.738	0.00	Projection to Bit

REFERENCE WELLPATH IDENTIFICATION			
Operator	KERR-MCGEE OIL & GAS ONSHORE LP	Slot	SLOT#26 NRC 28N-5HZ (500'FNL & 1350'FEL, SEC.08)
Area	COLORADO	Well	NRC 28N-5HZ
Field	WELD COUNTY (KERR MCGEE)	Wellbore	NRC 28N-5HZ AWB
Facility	SEC.08-T1N-R67W		

HOLE & CASING SECTIONS - Ref Wellbore: NRC 28N-5HZ AWB Ref Wellpath: NRC 28N-5HZ AWP									
String/Diameter	Start MD [ft]	End MD [ft]	Interval [ft]	Start TVD [ft]	End TVD [ft]	Start N/S [ft]	Start E/W [ft]	End N/S [ft]	End E/W [ft]
13.5in Open Hole	16.00	1361.00	1345.00	16.00	1360.98	0.00	0.00	4.42	4.22
9.625in Casing Surface	16.00	1351.00	1335.00	16.00	1350.98	0.00	0.00	4.37	4.22
8.75in Open Hole	1361.00	7938.00	6577.00	1360.98	7455.08	4.42	4.22	562.08	-913.61
7in Casing Intermediate	16.00	7928.00	7912.00	16.00	7454.93	0.00	0.00	552.08	-913.49
6.125in Open Hole	7938.00	12787.00	4849.00	7455.08	7465.75	562.08	-913.61	5408.53	-979.22

TARGETS									
Name	MD [ft]	TVD [ft]	North [ft]	East [ft]	Grid East [US ft]	Grid North [US ft]	Latitude	Longitude	Shape
SEC.05-T1N-R67W SECTION LINES		0.00	-0.61	59.86	3165193.02	1269413.69	40°04'17.117"N	104°54'35.013"W	polygon
SEC.05-T1N-R67W SETBACKS (460'FNL/FSL & 460'FEL/FWL)		0.00	-0.61	59.86	3165193.02	1269413.69	40°04'17.117"N	104°54'35.013"W	polygon
SEC.08-T1N-R67W SECTION LINES		0.00	-0.61	59.86	3165193.02	1269413.69	40°04'17.117"N	104°54'35.013"W	polygon
SEC.08-T1N-R67W SETBACKS (460'FNL/FSL & 460'FEL/FWL)		0.00	-0.61	59.86	3165193.02	1269413.69	40°04'17.117"N	104°54'35.013"W	polygon
NRC 28N-5HZ BHL ON PLAT (REV-1) (460'FNL & 2265'FEL, SEC.05)		7461.00	5435.23	-973.54	3164123.52	1274842.31	40°05'10.835"N	104°54'48.308"W	point
NRC 28N-5HZ LANDING BOX		7461.00	0.00	0.00	3165133.16	1269413.90	40°04'17.123"N	104°54'35.783"W	polygon

WELLPATH COMPOSITION - Ref Wellbore: NRC 28N-5HZ AWB Ref Wellpath: NRC 28N-5HZ AWP				
Start MD [ft]	End MD [ft]	Positional Uncertainty Model	Log Name/Comment	Wellbore
16.00	1278.00	Generic gyro - continuous (Standard)	MS ENERGY GYRO SURVEYS <116-1278>	NRC 28N-5HZ AWB
1278.00	7893.00	NaviTrak (MAGCORR,IFR)	BHI MWD+IFR SURVEYS 8 3/4" HOLE <1396-7893>	NRC 28N-5HZ AWB
7893.00	12736.00	NaviTrak (MAGCORR,IFR)	BHI MWD+IFR SURVEYS 6 1/8" HOLE <7979-12736	NRC 28N-5HZ AWB
12736.00	12787.00	Blind Drilling (std)	Projection to bit	NRC 28N-5HZ AWB

Actual Wellpath Report

NRC 28N-5HZ AWP

Page 6 of 6

REFERENCE WELLPATH IDENTIFICATION			
Operator	KERR-MCGEE OIL & GAS ONSHORE LP	Slot	SLOT#26 NRC 28N-5HZ (500'FNL & 1350'FEL, SEC.08)
Area	COLORADO	Well	NRC 28N-5HZ
Field	WELD COUNTY (KERR MCGEE)	Wellbore	NRC 28N-5HZ AWB
Facility	SEC.08-T1N-R67W		

WELLPATH COMMENTS				
MD [ft]	Inclination [°]	Azimuth [°]	TVD [ft]	Comment
16.00	0.000	66.470	16.00	Tie-On
116.00	0.390	66.470	116.00	Begin GYRO Surveys
1278.00	0.310	31.330	1277.98	Tie-Into GYRO Surveys
1396.00	0.300	349.000	1395.98	Begin BHI MWD+IFR Surveys
7928.00	89.014	359.396	7454.93	7" Casing Point
12736.00	88.800	2.100	7464.68	Last BHI MWD+IFR Surveys
12787.00	88.800	2.100	7465.75	Projection to Bit