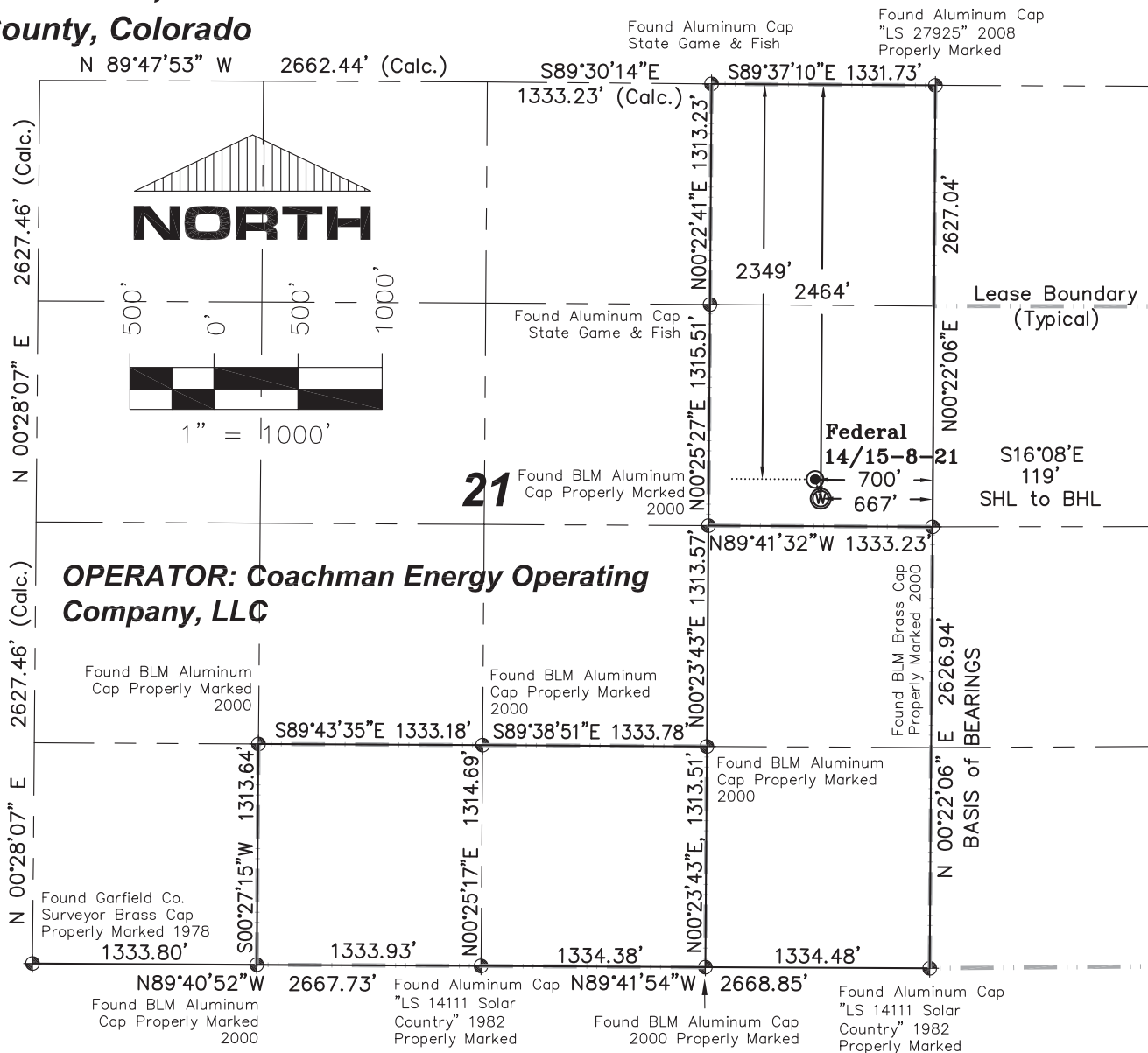


T. 6 S., R. 91 W., 6th P.M.

Garfield County, Colorado



NOTES:

- 1: GEODETIC POSITIONS ARE SHOWN IN DECIMAL DEGREES BASED ON NAD83.
- 2: UNITS OF MEASUREMENT: U.S. SURVEY FOOT
- 3: EXISTING GROUND ELEVATION: 6932.6'. PROPOSED PAD ELEVATION: 6932.37'. ELEVATIONS HAVE BEEN DERIVED USING GPS OBSERVATIONS, GEOID 09, NAVD 88.
- 4: ALL SURFACE HOLE LOCATIONS (SHL) AND BOTTOM HOLE LOCATIONS (BHL) ARE MEASURED AT 90° ANGLES FROM SECTION LINES.
- 5: BASIS OF BEARINGS: N 00°22'06\"

FEDERAL 14/15-8-21	NAD83
SURFACE HOLE LOCATION	SECTION LINE TIES
LATITUDE = 39.514395°N	FEL = 700'
LONGITUDE = 107.552353°W	FNL = 2349'
BOTTOM HOLE LOCATION	
LATITUDE = 39.514082°N	FEL = 667'
LONGITUDE = 107.552227°W	FNL = 2464'

LEGEND:

- ⊕ - FOUND MONUMENT AS DESCRIBED HEREON
- ⊙ - SURFACE HOLE LOCATION (SHL)
- ⊗ - BOTTOM HOLE LOCATION (BHL)

Rev. 8/9/11: Update Cert.
Rev. 8/25/14: Revise SHL/Staked Well on Pad 21B
Rev. 9/23/14: Revise SHL per as-built conductor location

SURVEYORS STATEMENT:

I, ROBERT E. BRANDEBERRY, BEING A REGISTERED LAND SURVEYOR IN THE STATE OF COLORADO, DO HEREBY CERTIFY THAT THIS PLAT REPRESENTS A SURVEY PERFORMED BY ME OR UNDER MY DIRECT SUPERVISION BETWEEN APRIL, 2010 & JANUARY, 2011, AND IS TRUE TO THE BEST OF MY KNOWLEDGE AND BELIEF. THE CONDUCTOR SURFACE HOLE LOCATION WAS AS-BUILT IN THE FIELD AS SHOWN HEREON ON SEPTEMBER 23, 2014.

ROBERT E. BRANDEBERRY
COLORADO LS 38388



SGM INC.
118 W. 6th Street, Suite 200
Glenwood Springs, Co. 81601
(970)945-1004 www.SGM-Inc.com
320 Third St. Meeker, Co. 81641

1" = 1000'

Sheet 1H of 9

Federal 14/15-8-21

Well Location Plat - Federal 14/15-8-21
SE 1/4 NE 1/4, Section 21, T. 6 S., R. 91 W., 6TH P.M.

Job# 2010-112.001

Date: 09/23/14

By: reb

File: APD_Pad21B