



5" = 100' FEET MD

COMPANY : CATAMOUNT ENERGY PARTNERS
 WELL : CAMPBELL 33-7-4 #1H
 FIELD : SAN JUAN BASIN
 COUNTY : LA PLATA
 STATE : COLORADO
 COUNTRY : USA
 UWI :

COMPANY : CATAMOUNT ENERGY PARTNERS
 WELL : CAMPBELL 33-7-4 #1H
 FIELD : SAN JUAN BASIN
 COUNTY : LA PLATA
 STATE : COLORADO
 COUNTRY : USA
 UWI :

WELL LOCATION
 LAT: 37.1283650°N LONG: 107.6010450°W

OTHER SERVICES

SEC: TWP: RANGE: DIRECTIONAL
 ROP

DEPTH REF. : RKB
 REF. HEIGHT : 13,000 Ft
 GROUND LEVEL : 6689.000 ft
 RKB to Ground Level
 G.I. to MEAN SEA LEVEL

BOREHOLE RECORD

DEVIATION RECORD

HOLE SIZE in	FROM Ft	TO Ft	INCLINATION deg	FROM Ft	TO Ft
7.875	0	3574	0 - 30	0	1283
4.75	3574	6187	30 - 60	1283	3634
			60 - 90	3634	3800
CASING RECORD					
CASING SIZE in	FROM Ft	TO Ft			
9.625	0	517			
5.5	517	4102			

DRILLING CO. :
 RIG :
 LMD UNIT NO. : C-48
 SPUD DATE :
 DISTRICT : FARMINGTON

LMD START DATE : JULY 23, 2014 DEPTH : 3574 Ft
 LMD END DATE : JULY 30, 2014 DEPTH : 6187 Ft
 TOTAL DEPTH : 2613 Ft

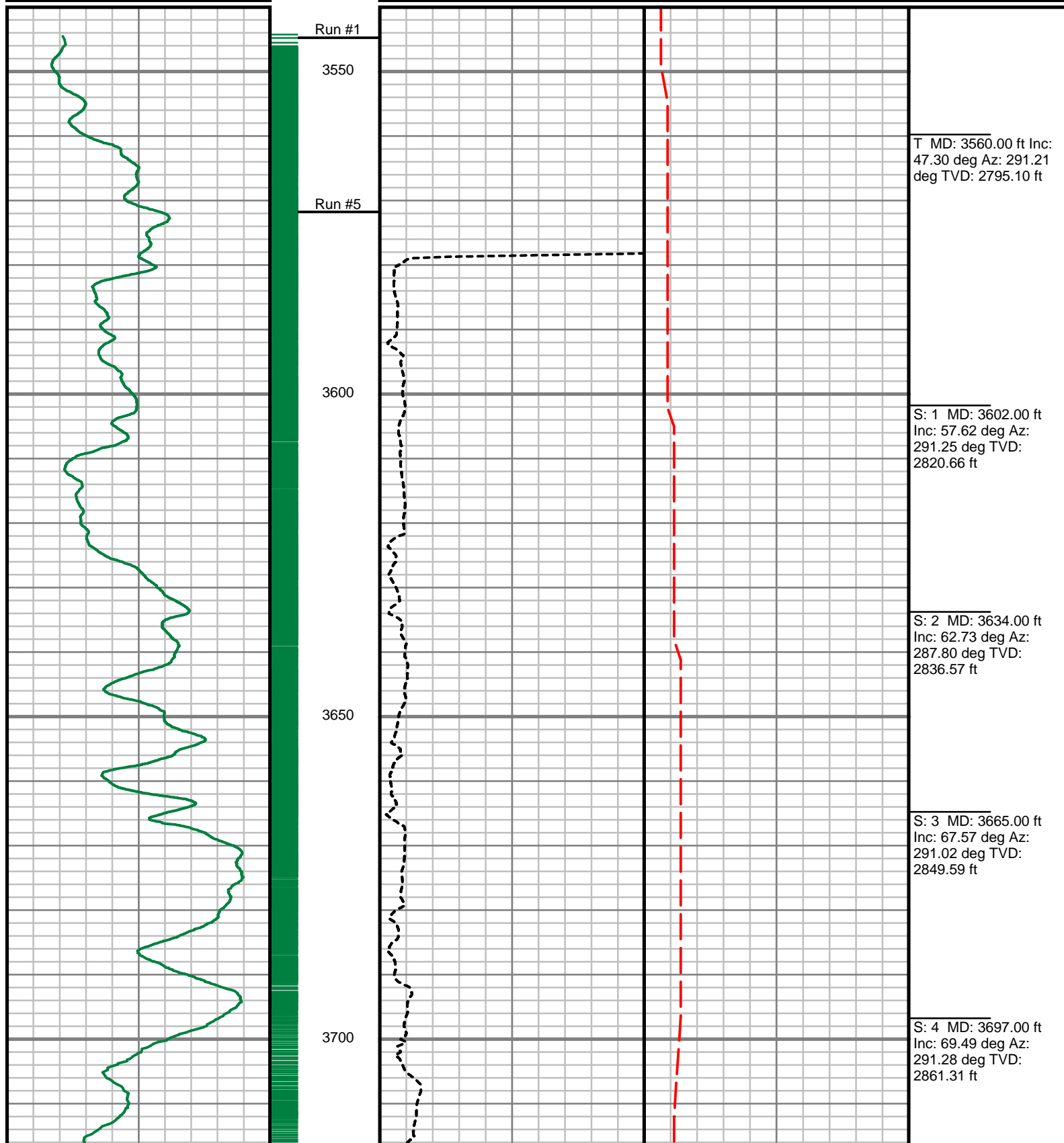
Run Data

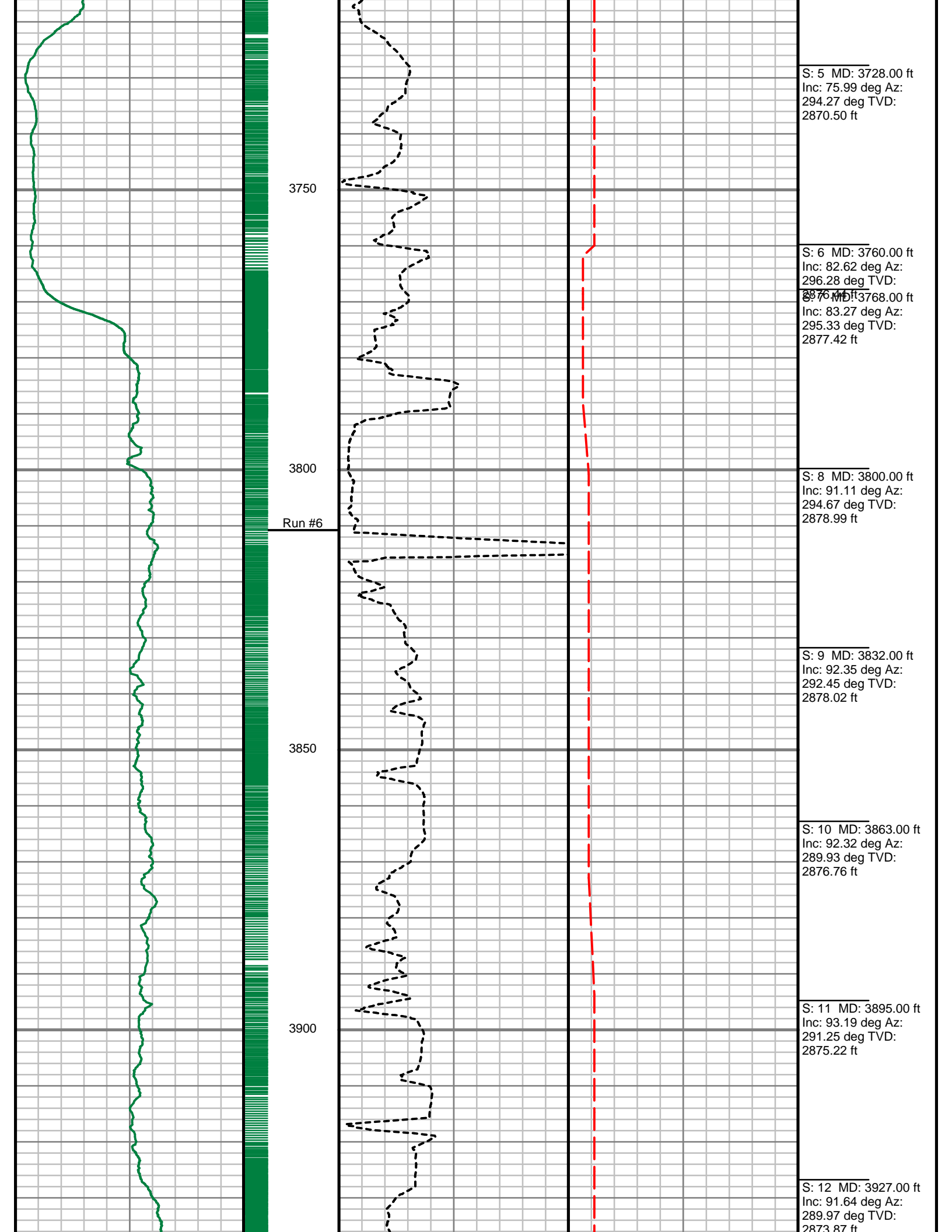
RUN NUMBER	1	2	3	4	5	6
START DATE	JULY 13, 2014	JULY 14, 2014	JULY 15, 2014	JULY 17, 2014	JULY 23, 2014	JULY 24, 2014
START TIME	0900	0600	1700	1400	1000	1130
END DATE	JULY 14, 2014	JULY 15, 2014	JULY 17, 2014	JULY 21, 2014	JULY 24, 2014	JULY 30, 2014
END TIME	0600	1700	1400	0000	1130	2359
DEPTH IN (ft)	3617	3641	4023	5561	3574	3811
DEPTH OUT (ft)	3641	4023	5561	7563	3811	6187
LOG TOP (ft)	3617	3611	3993	5534	3549	3786
LOG BOTTOM (ft)	3611	3993	5534	7535	3786	6162
HOLE SIZE (in)	4.75	4.75	4.75	4.75	4.75	4.75
MUD DATA @ (ft)	-	-	-	-	3716	-
MUD TYPE	BRINE	BRINE	BRINE	BRINE	BRINE	BRINE
DENSITY (lb / gal)	-	-	-	-	10.45	-
VISCOSITY (s / qt)	-	-	-	-	28	-
pH	-	-	-	-	5.5	-
FLUID LOSS (cm3 / 30)	-	-	-	-	-	-
SALINITY (ppm)	-	-	-	-	-	-
Rm (ohmm @ deg F)	-	-	-	-	-	-
Rmf (ohmm @ deg F)	-	-	-	-	-	-
MAX TEMP (deg F)	-	-	-	-	111	-
Rm @ MAX TEMP (ohmm)	-	-	-	-	-	-
LWD ENGINEER #1	C.MCINNES	C.MCINNES	C.MCINNES	C.MCINNES	C.MCINNES	C.MCINNES
LWD ENGINEER #2	J.KAWAGUCHI	J.KAWAGUCHI	J.KAWAGUCHI	J.KAWAGUCHI	J.KAWAGUCHI	J.KAWAGUCHI
LWD ENGINEER #3	-	-	-	-	-	-
LOG WITNESS #1	-	-	-	-	-	-
LOG WITNESS #2	-	-	-	-	-	-

All interpretations are opinions based on inferences from electrical or other measurements and we cannot, and do not guarantee the accuracy or correctness of any interpretations, and we shall not, except in the case of gross or willful negligence on our part, be liable or responsible for any loss, costs, damages or expenses incurred or sustained by anyone resulting from any interpretation made by any of our officers, agents or employees. These interpretations are also subject to our general terms and conditions as set out in our current price schedule.

CAMPBELL 33-7-4 #1 LATERAL #2
MD GAMMA PLOT
MEMORY DATA

Gamma Ray (GR)	MEASURED DEPTH 1:240 (ft)	Rate of Penetration (ROP)	Tool Temperature (T-TEMP)	Comments
0 Unit = aapi 150		0 Unit = ft/hr 400	100 Unit = °F 200	





S: 5 MD: 3728.00 ft
 Inc: 75.99 deg Az:
 294.27 deg TVD:
 2870.50 ft

3750

S: 6 MD: 3760.00 ft
 Inc: 82.62 deg Az:
 296.28 deg TVD:
 2876.17 ft
 S: 7 MD: 3768.00 ft
 Inc: 83.27 deg Az:
 295.33 deg TVD:
 2877.42 ft

3800

Run #6

S: 8 MD: 3800.00 ft
 Inc: 91.11 deg Az:
 294.67 deg TVD:
 2878.99 ft

S: 9 MD: 3832.00 ft
 Inc: 92.35 deg Az:
 292.45 deg TVD:
 2878.02 ft

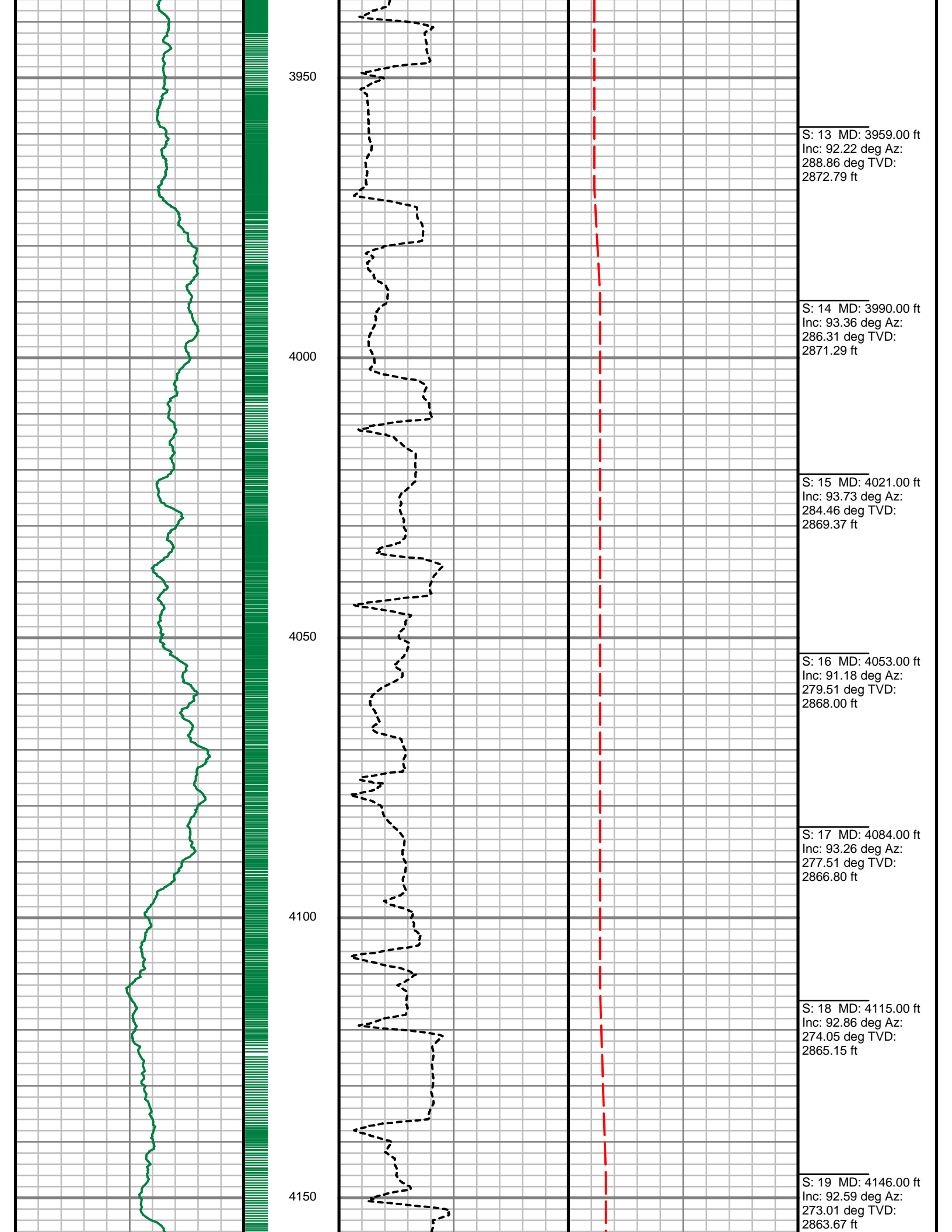
3850

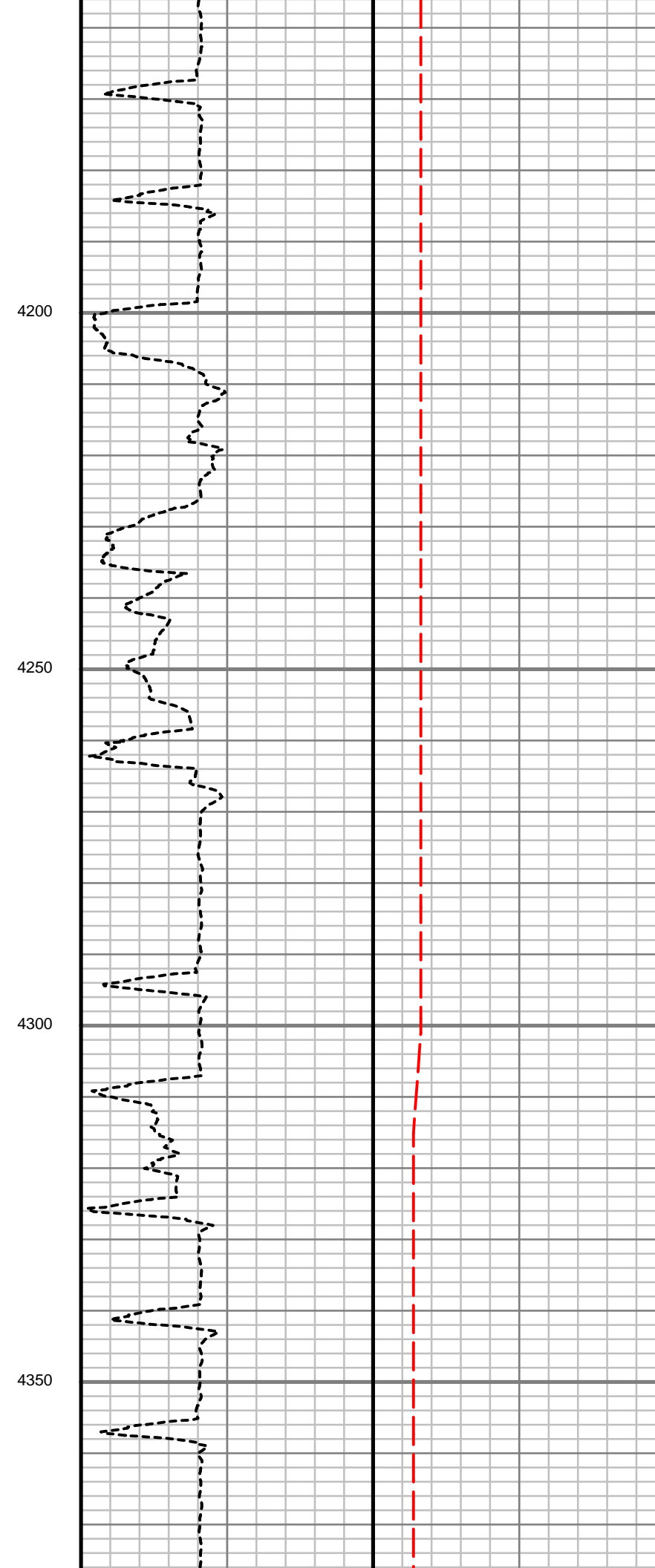
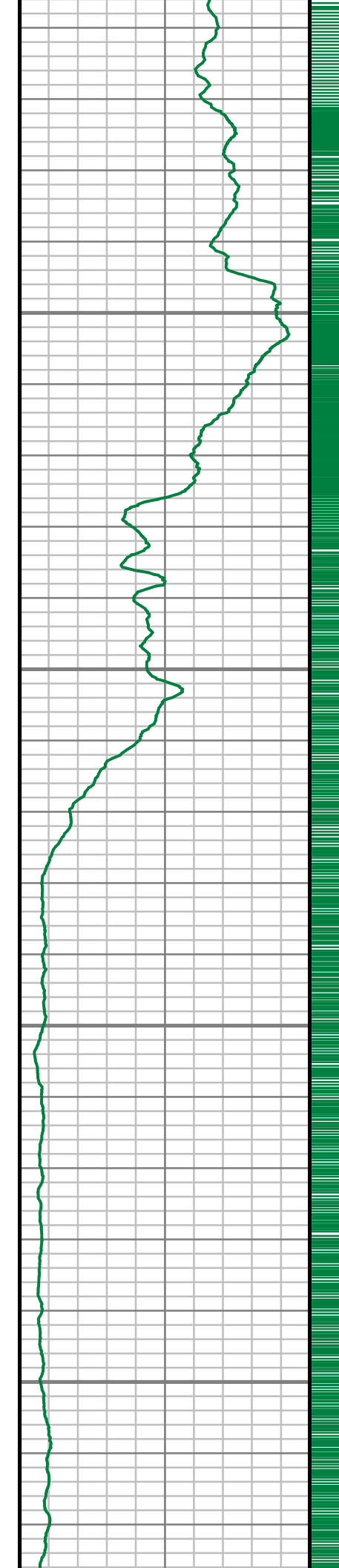
S: 10 MD: 3863.00 ft
 Inc: 92.32 deg Az:
 289.93 deg TVD:
 2876.76 ft

3900

S: 11 MD: 3895.00 ft
 Inc: 93.19 deg Az:
 291.25 deg TVD:
 2875.22 ft

S: 12 MD: 3927.00 ft
 Inc: 91.64 deg Az:
 289.97 deg TVD:
 2873.87 ft





S: 20 MD: 4177.00 ft
Inc: 92.42 deg Az:
272.05 deg TVD:
2862.32 ft

S: 21 MD: 4208.00 ft
Inc: 93.26 deg Az:
271.65 deg TVD:
2860.78 ft

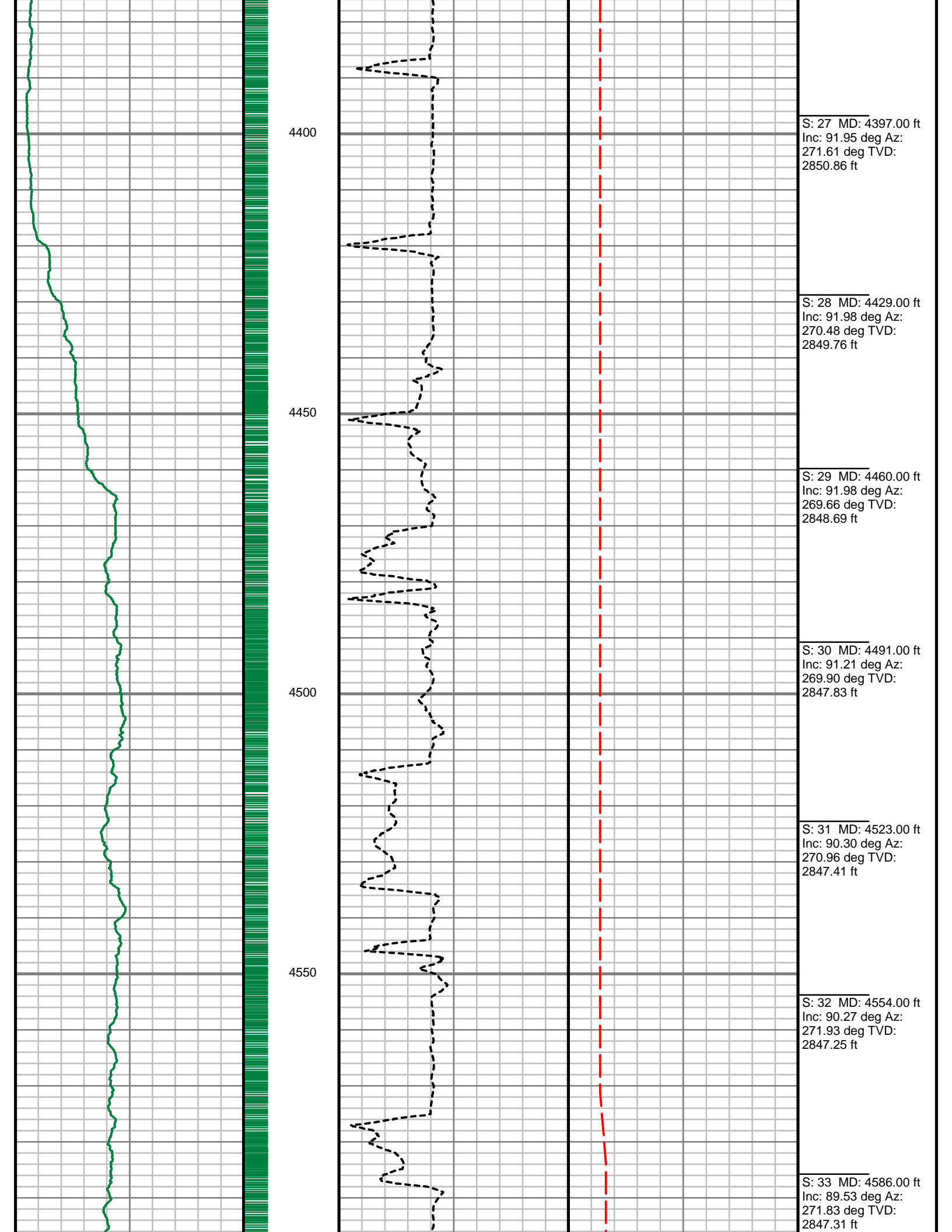
S: 22 MD: 4240.00 ft
Inc: 93.23 deg Az:
271.21 deg TVD:
2858.97 ft

S: 23 MD: 4272.00 ft
Inc: 94.14 deg Az:
271.60 deg TVD:
2856.92 ft

S: 24 MD: 4303.00 ft
Inc: 94.44 deg Az:
271.42 deg TVD:
2854.60 ft

S: 25 MD: 4334.00 ft
Inc: 91.71 deg Az:
271.79 deg TVD:
2852.94 ft

S: 26 MD: 4366.00 ft
Inc: 91.95 deg Az:
271.68 deg TVD:
2851.91 ft



4400

S: 27 MD: 4397.00 ft
Inc: 91.95 deg Az:
271.61 deg TVD:
2850.86 ft

4450

S: 28 MD: 4429.00 ft
Inc: 91.98 deg Az:
270.48 deg TVD:
2849.76 ft

4500

S: 29 MD: 4460.00 ft
Inc: 91.98 deg Az:
269.66 deg TVD:
2848.69 ft

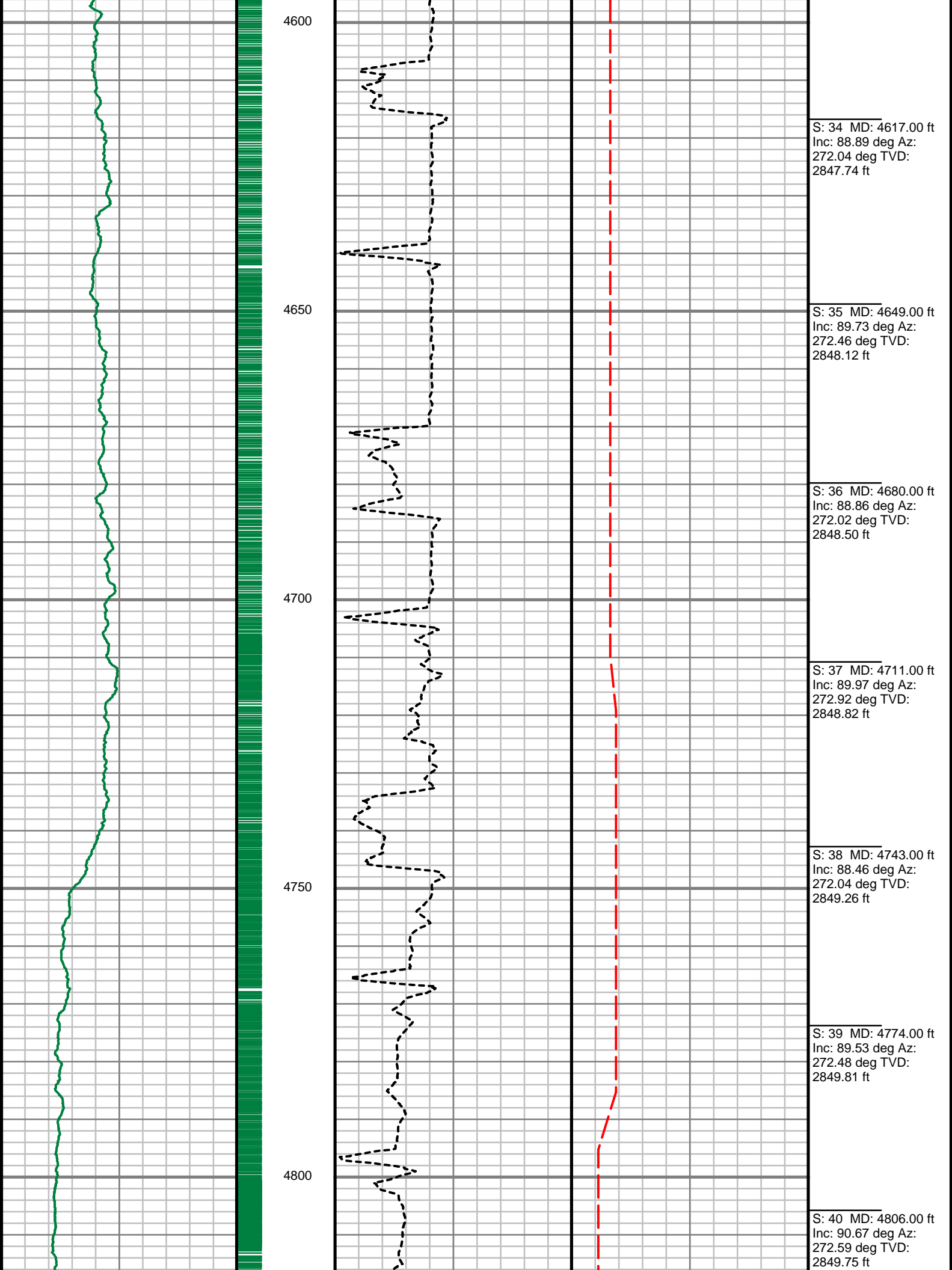
4550

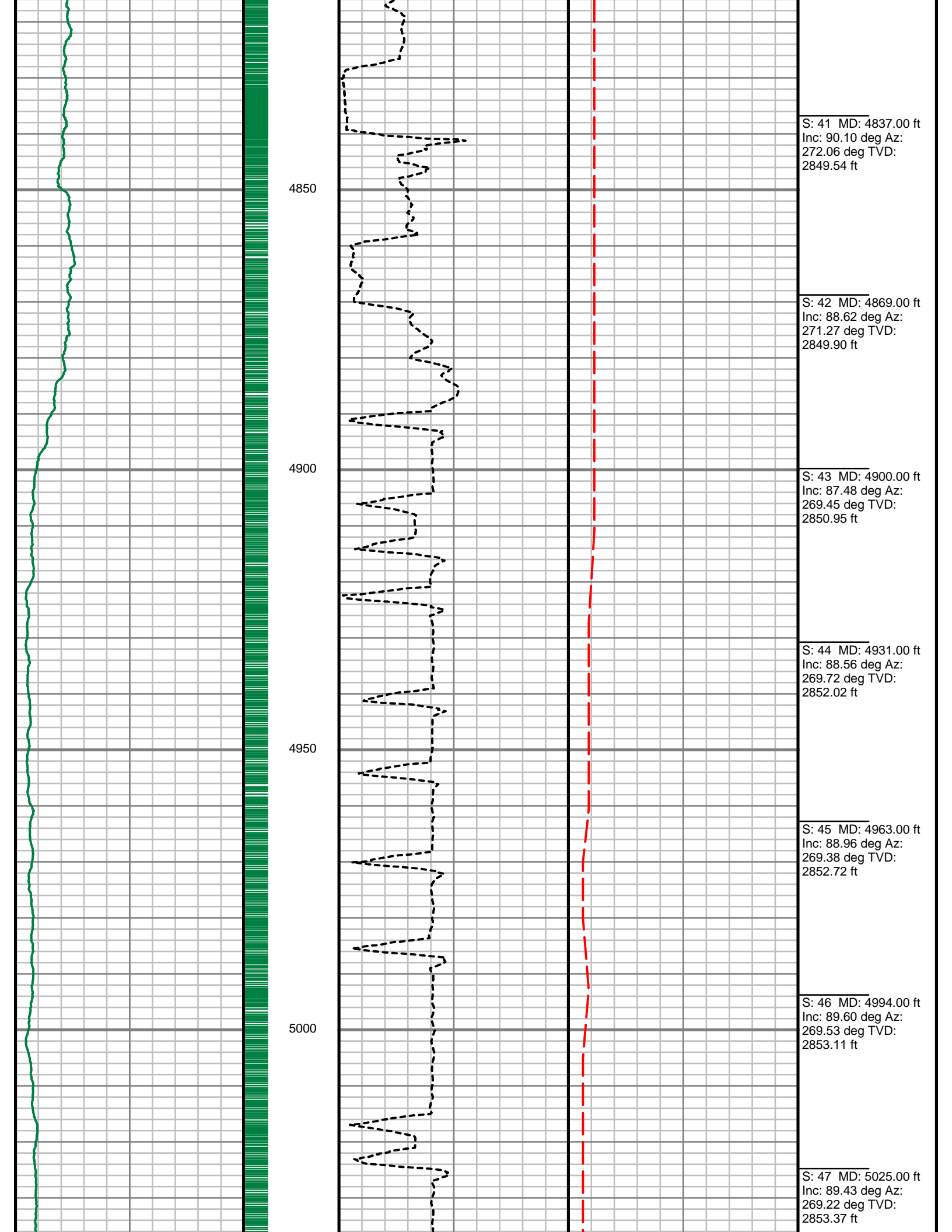
S: 30 MD: 4491.00 ft
Inc: 91.21 deg Az:
269.90 deg TVD:
2847.83 ft

S: 31 MD: 4523.00 ft
Inc: 90.30 deg Az:
270.96 deg TVD:
2847.41 ft

S: 32 MD: 4554.00 ft
Inc: 90.27 deg Az:
271.93 deg TVD:
2847.25 ft

S: 33 MD: 4586.00 ft
Inc: 89.53 deg Az:
271.83 deg TVD:
2847.31 ft





S: 41 MD: 4837.00 ft
Inc: 90.10 deg Az:
272.06 deg TVD:
2849.54 ft

S: 42 MD: 4869.00 ft
Inc: 88.62 deg Az:
271.27 deg TVD:
2849.90 ft

S: 43 MD: 4900.00 ft
Inc: 87.48 deg Az:
269.45 deg TVD:
2850.95 ft

S: 44 MD: 4931.00 ft
Inc: 88.56 deg Az:
269.72 deg TVD:
2852.02 ft

S: 45 MD: 4963.00 ft
Inc: 88.96 deg Az:
269.38 deg TVD:
2852.72 ft

S: 46 MD: 4994.00 ft
Inc: 89.60 deg Az:
269.53 deg TVD:
2853.11 ft

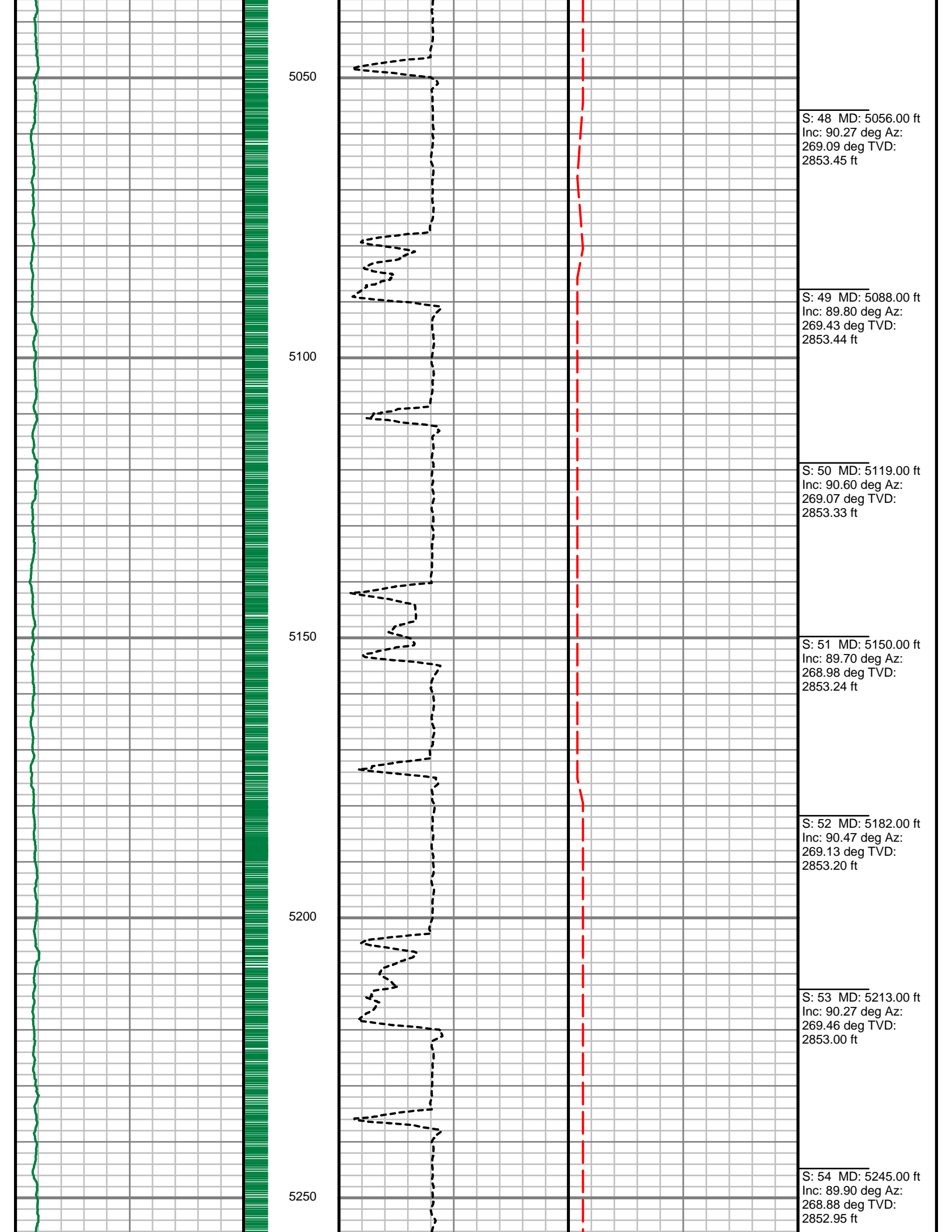
S: 47 MD: 5025.00 ft
Inc: 89.43 deg Az:
269.22 deg TVD:
2853.37 ft

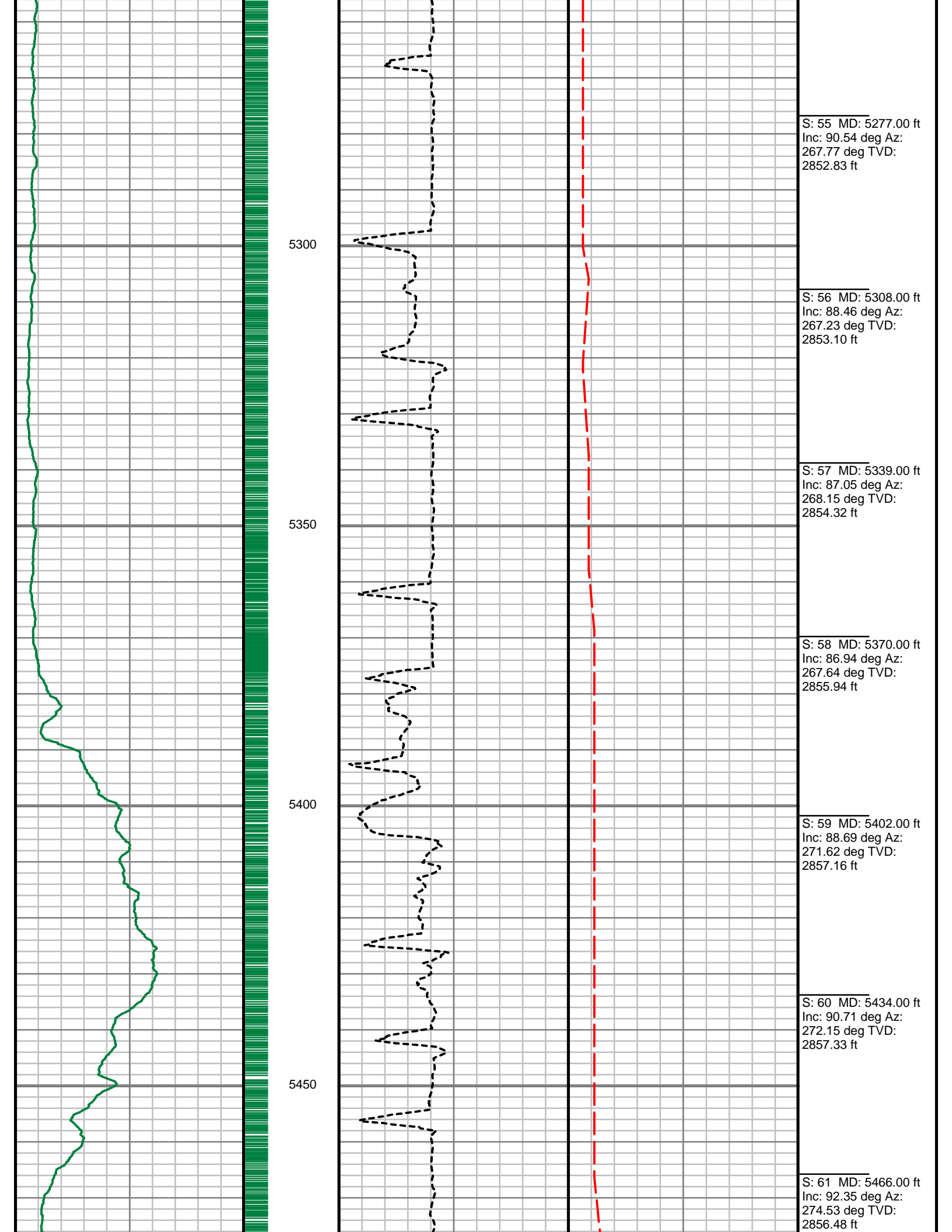
4850

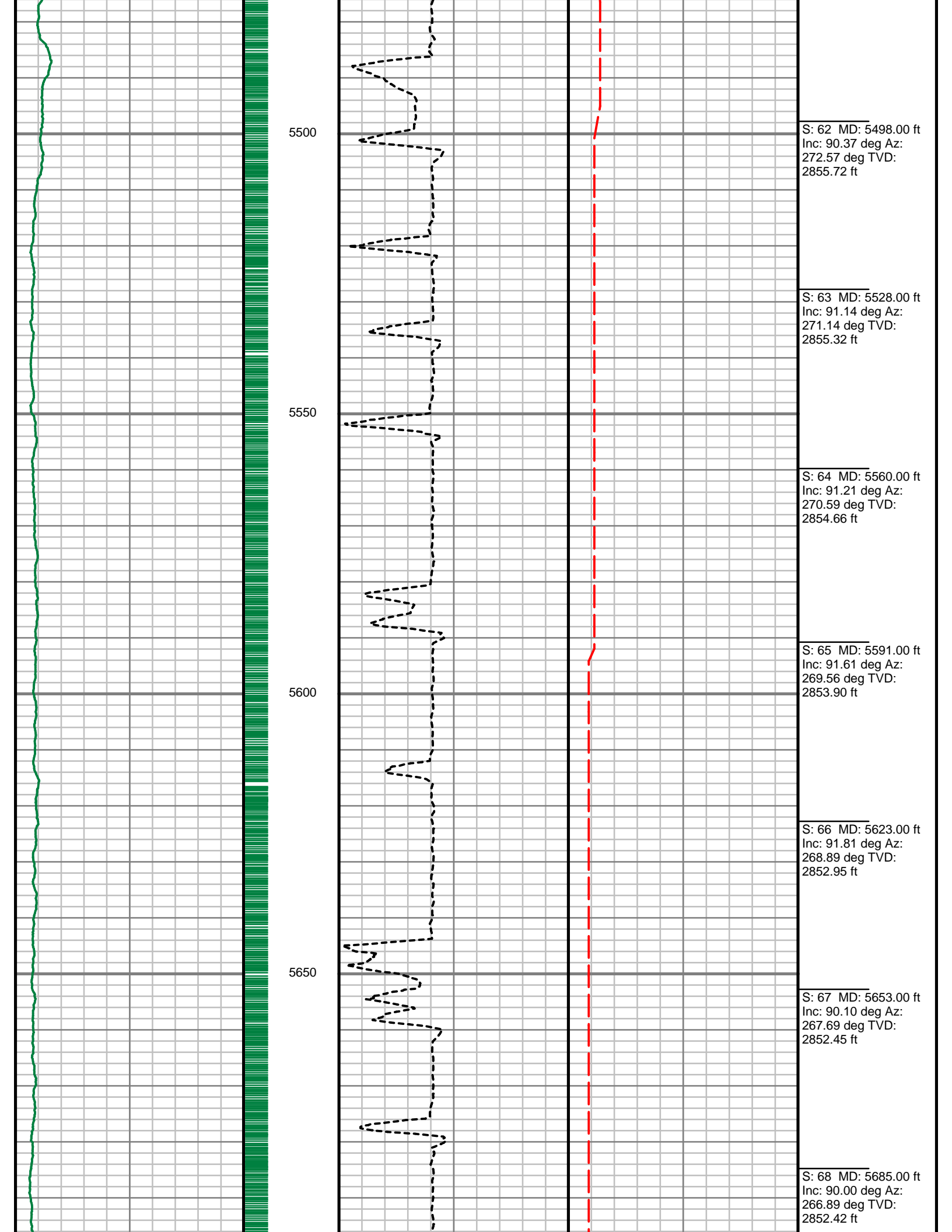
4900

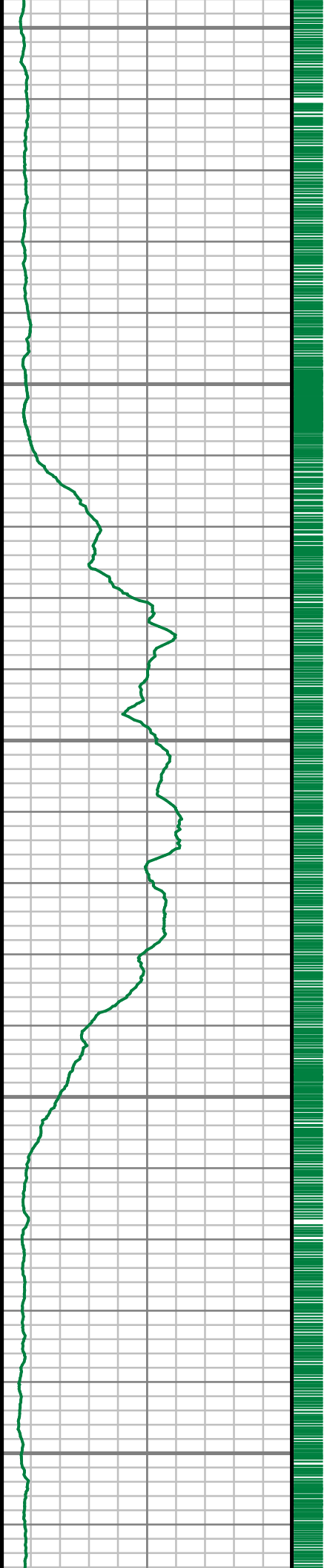
4950

5000

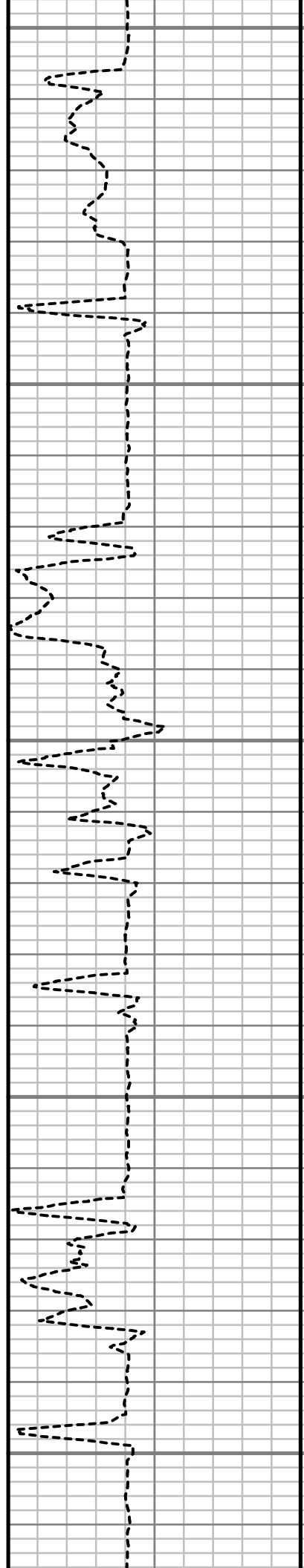








5700
5750
5800
5850
5900



S: 69 MD: 5717.00 ft
Inc: 89.66 deg Az:
268.27 deg TVD:
2852.51 ft

S: 70 MD: 5749.00 ft
Inc: 89.36 deg Az:
268.38 deg TVD:
2852.78 ft

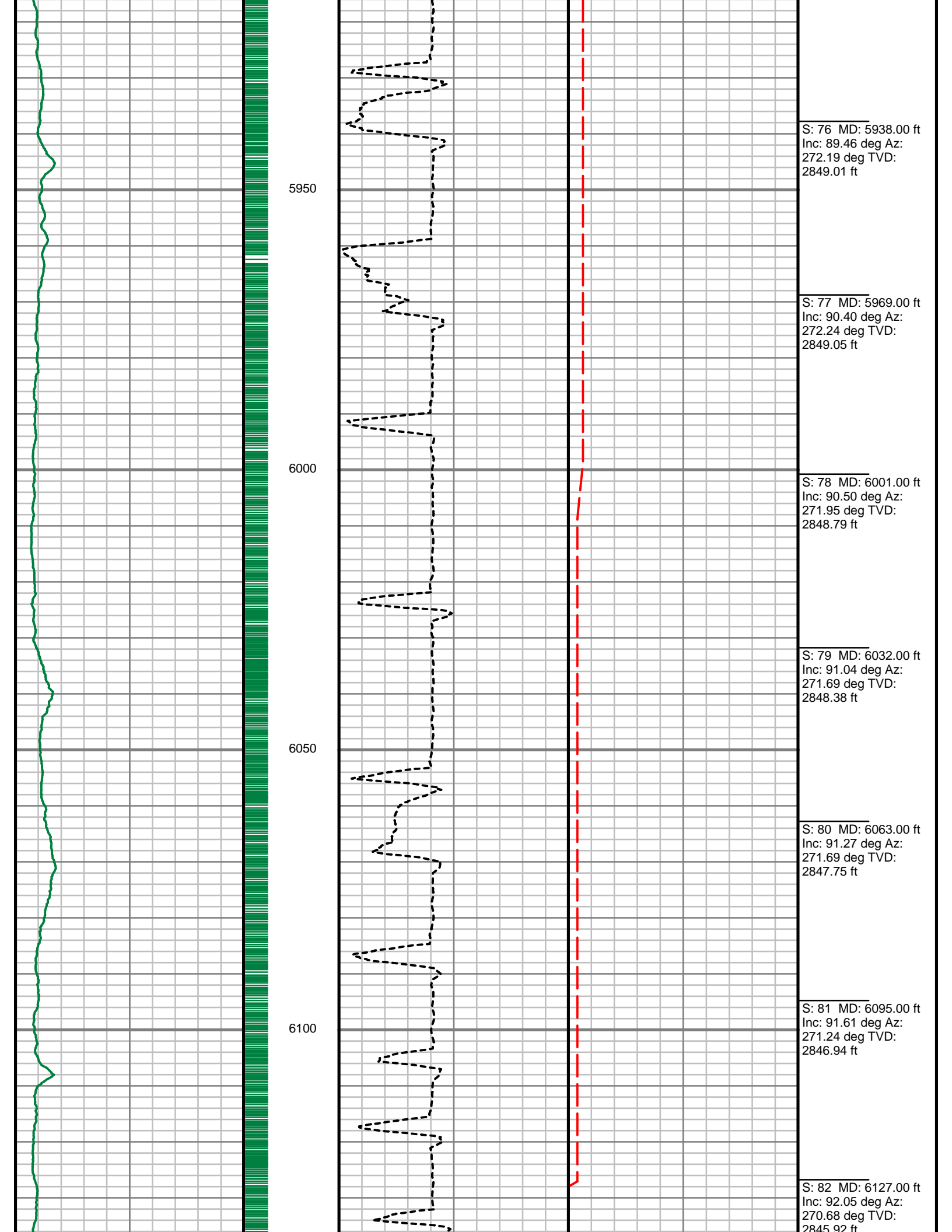
S: 71 MD: 5780.00 ft
Inc: 90.74 deg Az:
271.02 deg TVD:
2852.76 ft

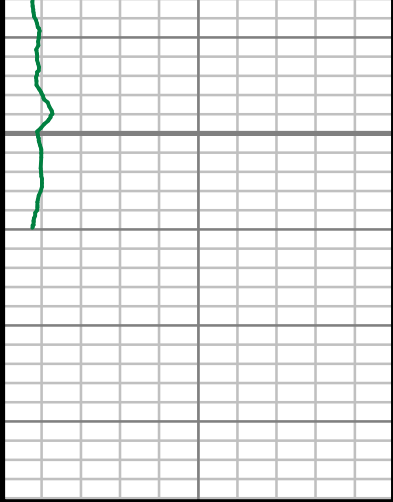
S: 72 MD: 5812.00 ft
Inc: 92.12 deg Az:
273.00 deg TVD:
2851.96 ft

S: 73 MD: 5843.00 ft
Inc: 93.49 deg Az:
273.65 deg TVD:
2850.44 ft

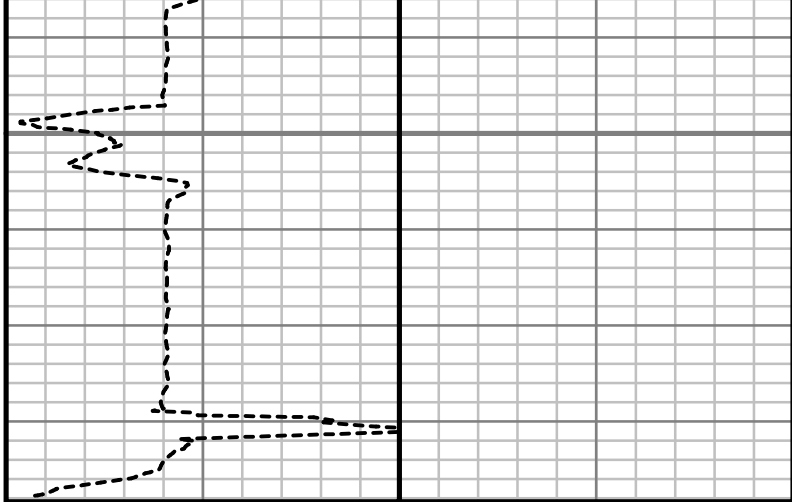
S: 74 MD: 5875.00 ft
Inc: 91.27 deg Az:
272.66 deg TVD:
2849.11 ft

S: 75 MD: 5906.00 ft
Inc: 89.83 deg Az:
271.84 deg TVD:
2848.81 ft





6150



Gamma Ray (GR)		
0	Unit = aapi	150

MEASURED DEPTH
1:240 (ft)

Rate of Penetration (ROP)		
0	Unit = ft/hr	400

Tool Temperature (T-TEMP)		
100	Unit = °F	200

Comments



GAMMA RAY

5" = 100' FEET MD