

5" = 100' FEET MD

COMPANY : CATAMOUNT ENERGY PARTNERS  
 WELL : CAMPBELL 33-7-4 #1H  
 FIELD : SAN JUAN BASIN  
 COUNTY : LA PLATA  
 STATE : COLORADO  
 COUNTRY : USA  
 UWI :

COMPANY : CATAMOUNT ENERGY PARTNERS  
 WELL : CAMPBELL 33-7-4 #1H  
 FIELD : SAN JUAN BASIN  
 COUNTY : LA PLATA  
 STATE : COLORADO  
 COUNTRY : USA  
 UWI :

WELL LOCATION  
 LAT: 37.1283650°N LONG: 107.6010450°W

OTHER SERVICES

DIRECTIONAL

SEC: TWP: RANGE: ROP

DEPTH REF. : RKB  
 REF. HEIGHT : 13,000 Ft  
 GROUND LEVEL : 6689.000 Ft  
 RKB to Ground Level  
 G.I. to MEAN SEA LEVEL

**BOREHOLE RECORD**

**DEVIATION RECORD**

HOLE SIZE in	FROM Ft	TO Ft	INCLINATION deg	FROM Ft	TO Ft
7.875	0	4114	0 - 30	0	1283
4.75	4114	7563	30 - 60	1283	3739
			60 - 90	3739	4173
CASING RECORD					
CASING SIZE in	FROM Ft	TO Ft			
9.625	0	517			
5.5	517	4102			

DRILLING CO. :  
 RIG :  
 LMD UNIT NO. : C-48  
 SPUD DATE :  
 DISTRICT : FARMINGTON

LMD START DATE : JULY 13, 2014 DEPTH : 3617 Ft  
 LMD END DATE : JULY 21, 2014 DEPTH : 7535 Ft  
 TOTAL DEPTH : 3918 Ft

**Run Data**

RUN NUMBER	1	2	3	4
START DATE	JULY 13, 2014	JULY 14, 2014	JULY 15, 2014	JULY 17, 2014
START TIME	0900	0600	1700	1400
END DATE	JULY 14, 2014	JULY 15, 2014	JULY 17, 2014	JULY 21, 2014
END TIME	0600	1700	1400	12:00 AM
DEPTH IN (ft)	3617	3641	4023	5561
DEPTH OUT (ft)	3641	4023	5561	7563
LOG TOP (ft)	3617	3611	3993	5534
LOG BOTTOM (ft)	3611	3993	5534	7535
HOLE SIZE (in)	4.75	4.75	4.75	4.75
MUD DATA @ (ft)	-	-	-	-
MUD TYPE	-	-	-	-
DENSITY (lb / gal)	-	-	-	-
VISCOSITY (s / qt)	-	-	-	-
pH	BRINE	BRINE	BRINE	BRINE
FLUID LOSS (cm3 / 30)	-	-	-	-
SALINITY (ppm)	-	-	-	-
Rm (ohmm @ deg F)	-	-	-	-
Rmf (ohmm @ deg F)	-	-	-	-
MAX TEMP (deg F)	-	-	-	-
Rm @ MAX TEMP (ohmm)	-	-	-	-
LWD ENGINEER #1	C.MCINNES	C.MCINNES	C.MCINNES	C.MCINNES
LWD ENGINEER #2	J.KAWAGUCHI	J.KAWAGUCHI	J.KAWAGUCHI	J.KAWAGUCHI
LWD ENGINEER #3	-	-	-	-
LOG WITNESS #1	-	-	-	-
LOG WITNESS #2	-	-	-	-



All interpretations are opinions based on inferences from electrical or other measurements and do not guarantee the accuracy or correctness of any interpretations, and we shall not, except in the case of gross or willful negligence on our part, be liable or responsible for any loss, costs, damages or expenses incurred or sustained by anyone resulting from any interpretation made by any of our officers, agents or employees. These interpretations are also subject to our general terms and conditions as set out in our current price schedule.

CAMPBELL 33-7-4 #1 LATERAL #1  
 MD GAMMA PLOT  
 MEMORY DATA

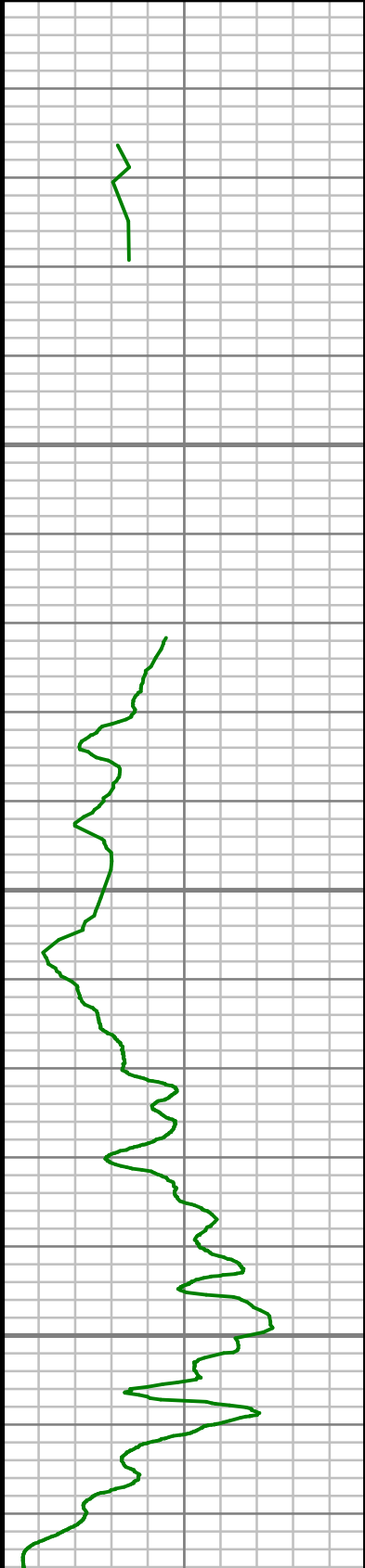
Gamma Ray (GR)		
0	Unit = aapi	150

MEASURED DEPTH  
 1,240 (ft)

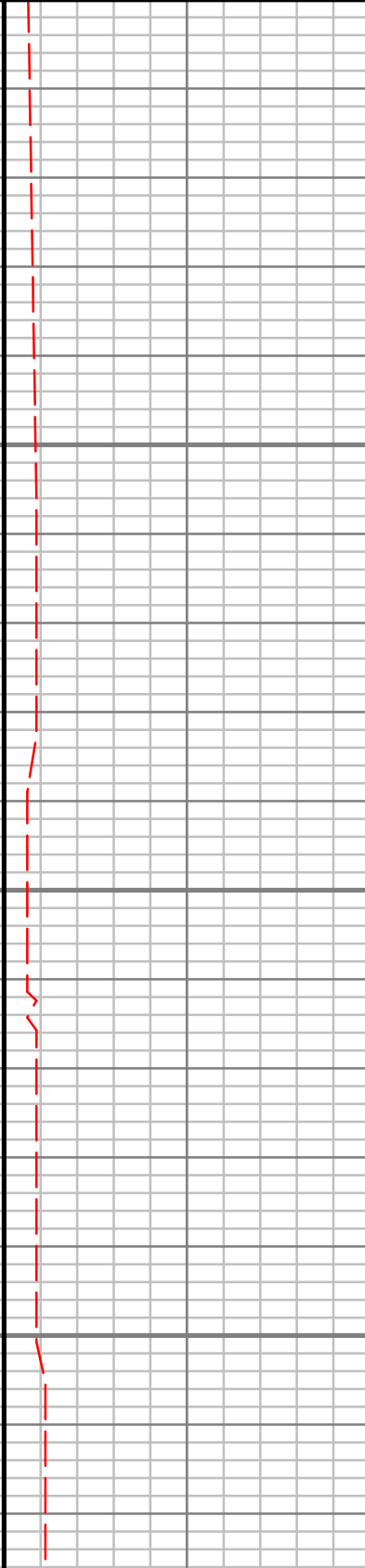
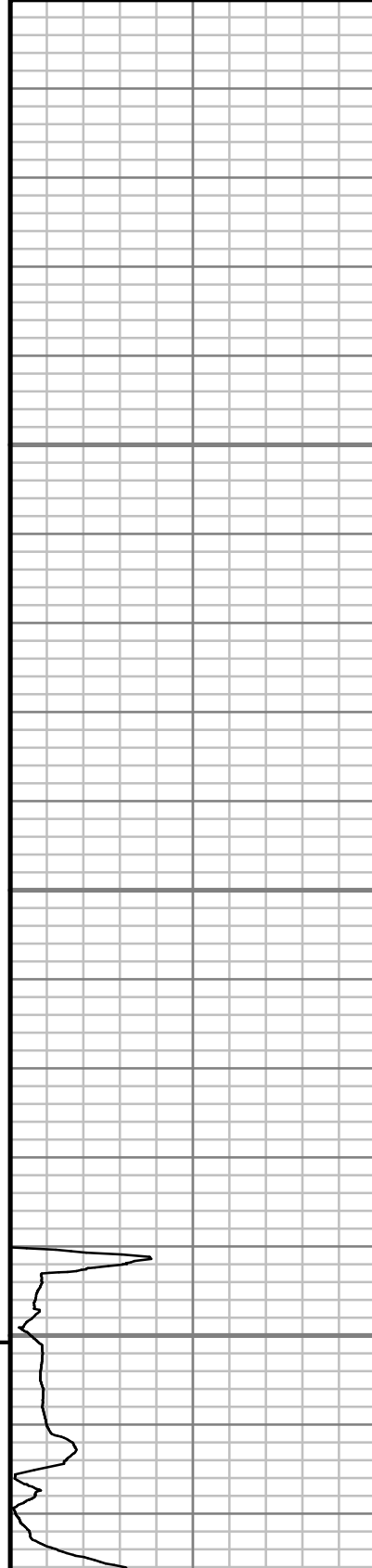
Rate of Penetration (ROP)		
0	Unit = ft/hr	400

Tool Temperature (T-TEMP)		
100	Unit = °F	200

Comments

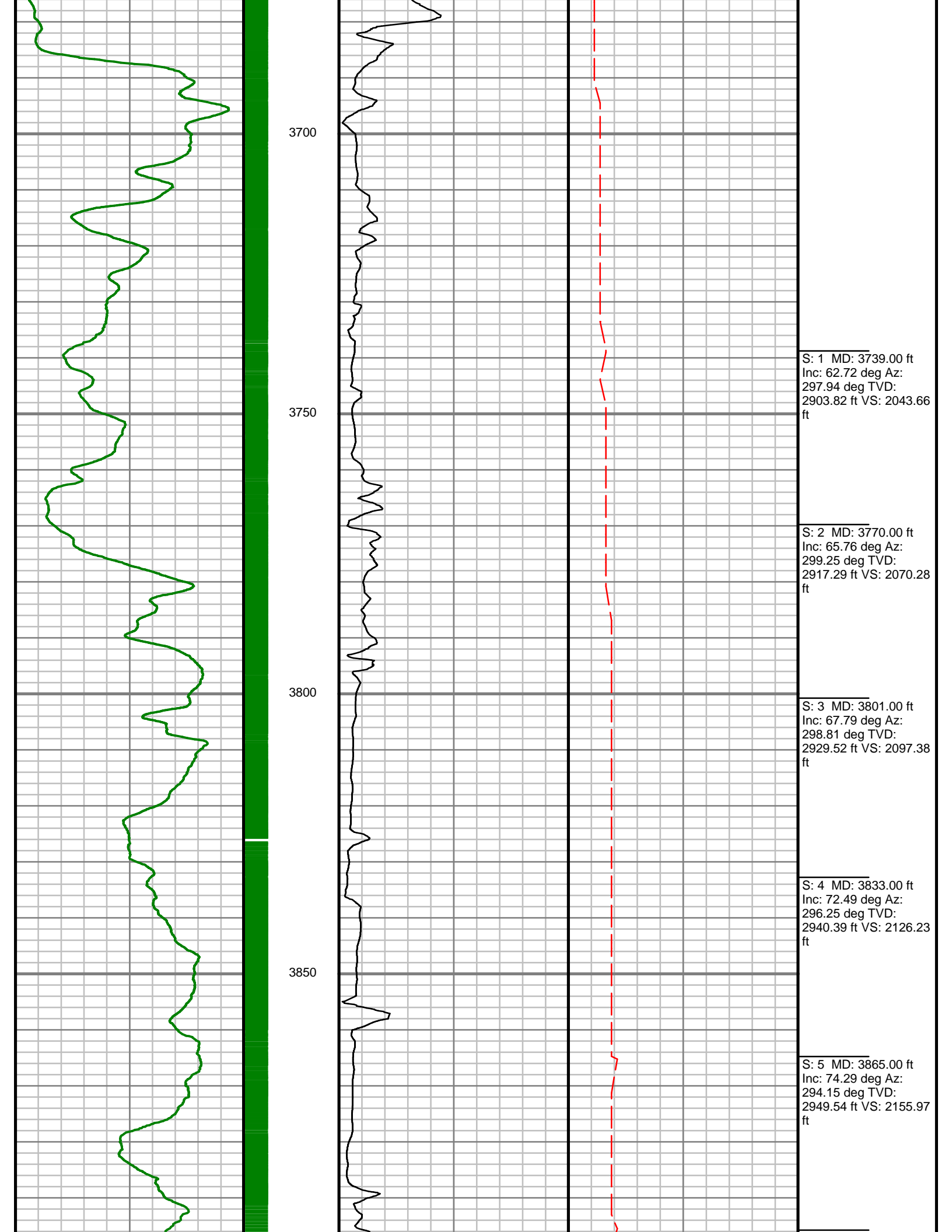


3550  
 3600



T MD: 3620.00 ft Inc:  
 47.59 deg Az: 292.06  
 deg TVD: 2835.99 ft  
 VS: 1949.32 ft

R005#2



3700

3750

3800

3850

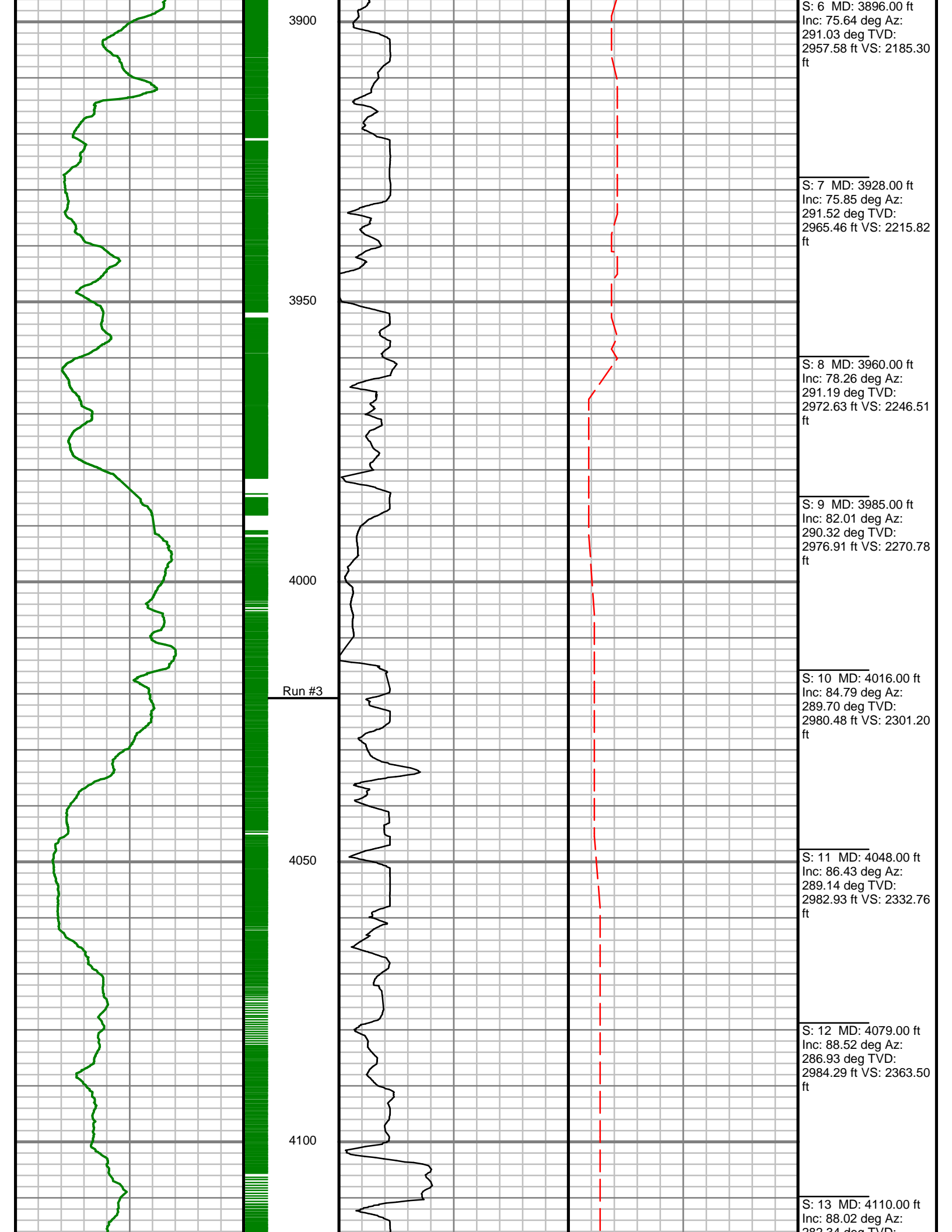
S: 1 MD: 3739.00 ft  
Inc: 62.72 deg Az:  
297.94 deg TVD:  
2903.82 ft VS: 2043.66  
ft

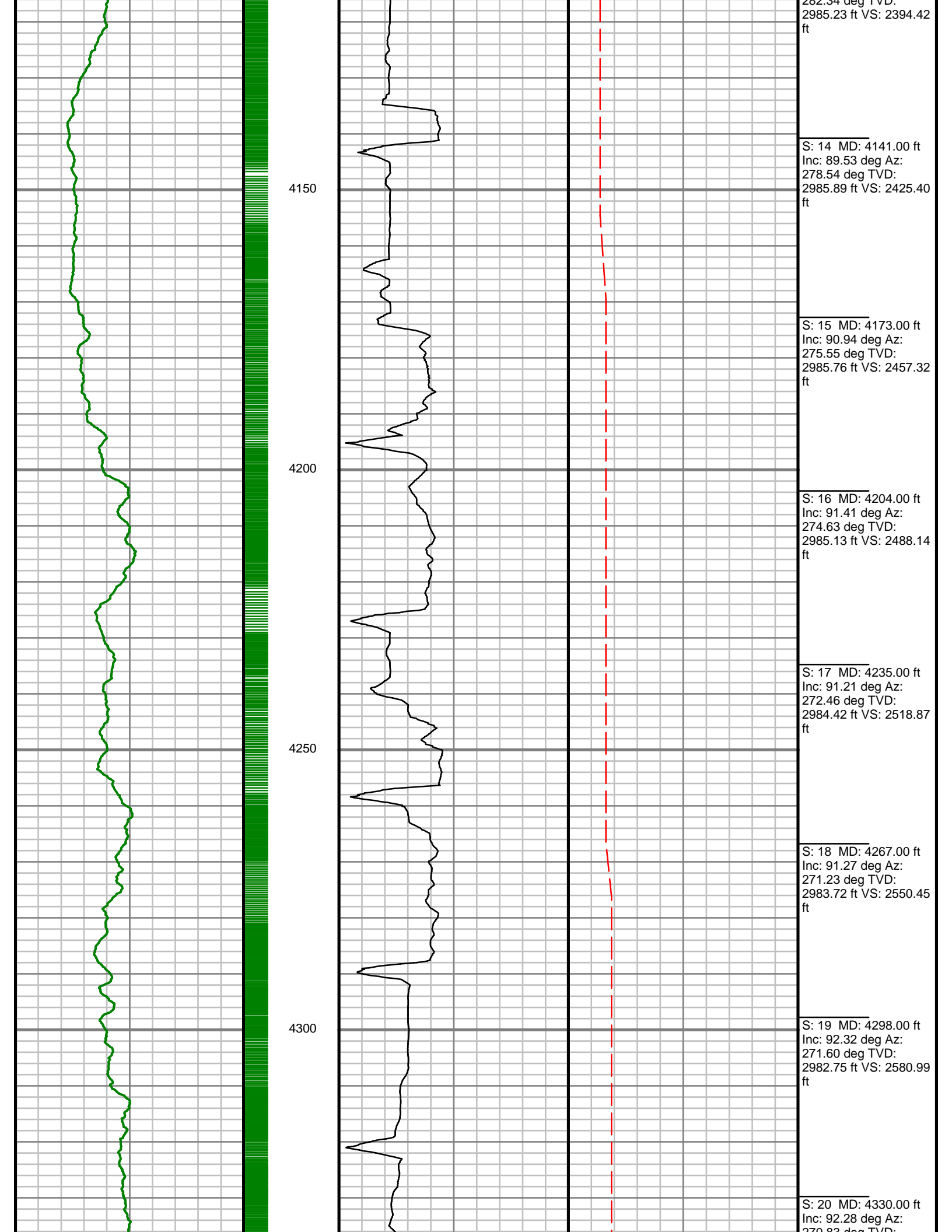
S: 2 MD: 3770.00 ft  
Inc: 65.76 deg Az:  
299.25 deg TVD:  
2917.29 ft VS: 2070.28  
ft

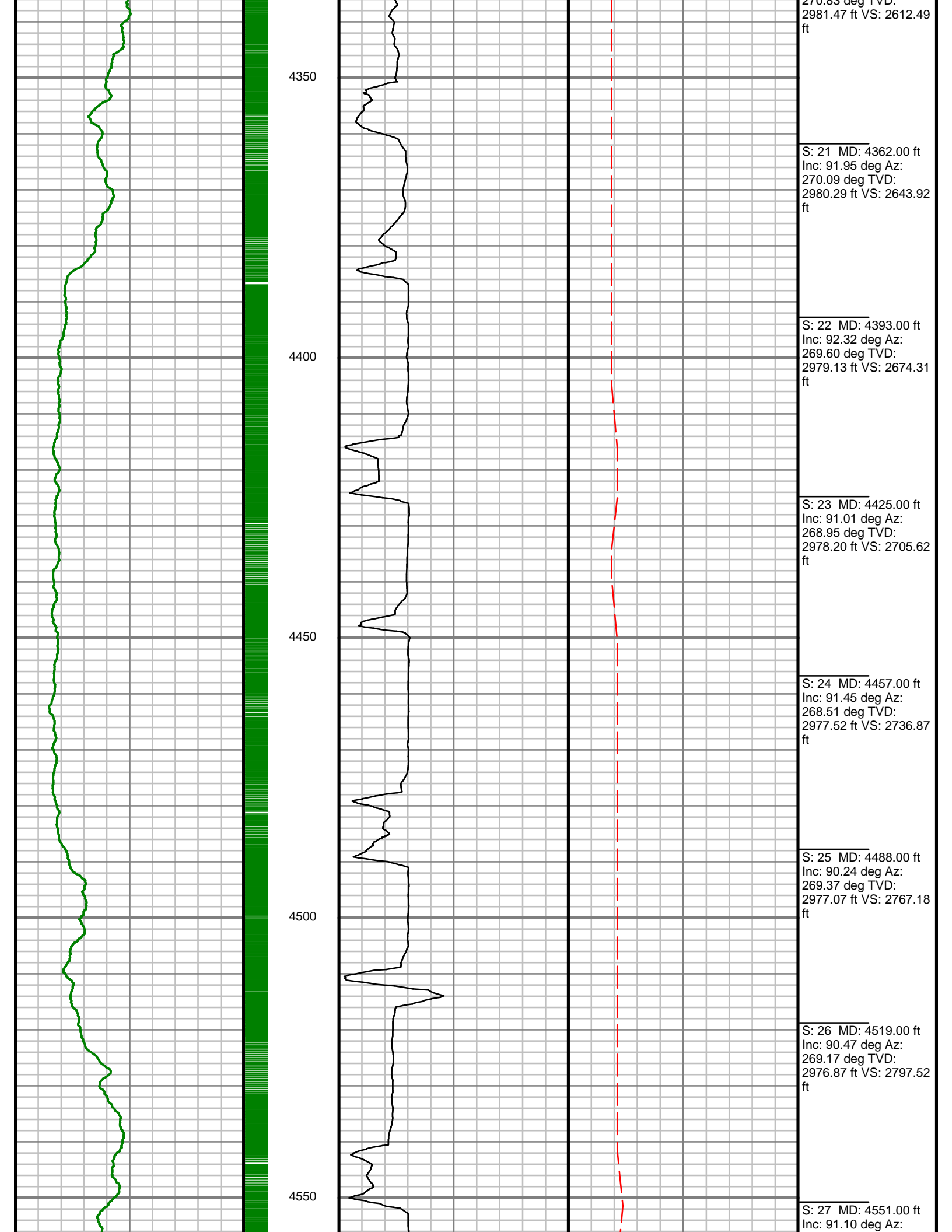
S: 3 MD: 3801.00 ft  
Inc: 67.79 deg Az:  
298.81 deg TVD:  
2929.52 ft VS: 2097.38  
ft

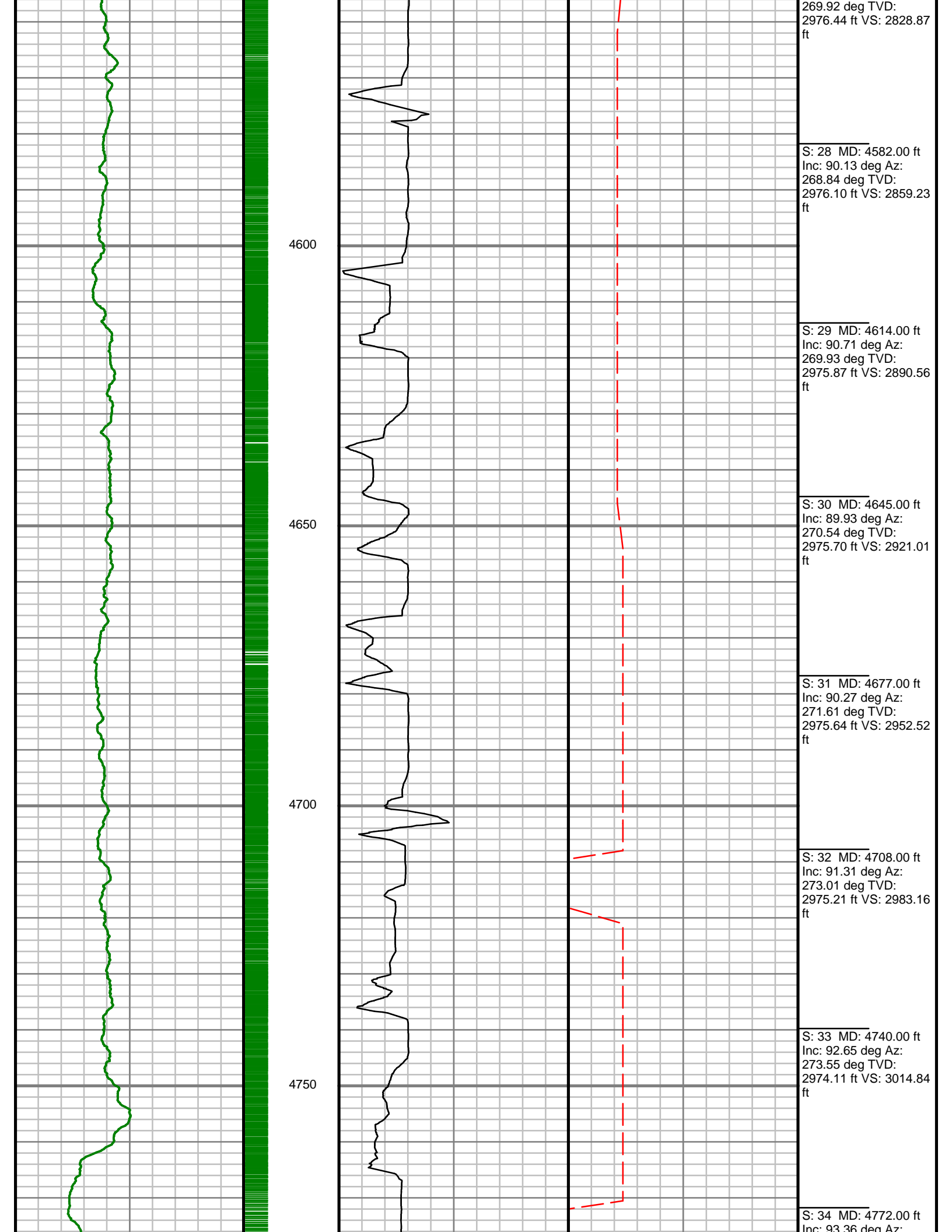
S: 4 MD: 3833.00 ft  
Inc: 72.49 deg Az:  
296.25 deg TVD:  
2940.39 ft VS: 2126.23  
ft

S: 5 MD: 3865.00 ft  
Inc: 74.29 deg Az:  
294.15 deg TVD:  
2949.54 ft VS: 2155.97  
ft









269.92 deg TVD:  
2976.44 ft VS: 2828.87  
ft

S: 28 MD: 4582.00 ft  
Inc: 90.13 deg Az:  
268.84 deg TVD:  
2976.10 ft VS: 2859.23  
ft

S: 29 MD: 4614.00 ft  
Inc: 90.71 deg Az:  
269.93 deg TVD:  
2975.87 ft VS: 2890.56  
ft

S: 30 MD: 4645.00 ft  
Inc: 89.93 deg Az:  
270.54 deg TVD:  
2975.70 ft VS: 2921.01  
ft

S: 31 MD: 4677.00 ft  
Inc: 90.27 deg Az:  
271.61 deg TVD:  
2975.64 ft VS: 2952.52  
ft

S: 32 MD: 4708.00 ft  
Inc: 91.31 deg Az:  
273.01 deg TVD:  
2975.21 ft VS: 2983.16  
ft

S: 33 MD: 4740.00 ft  
Inc: 92.65 deg Az:  
273.55 deg TVD:  
2974.11 ft VS: 3014.84  
ft

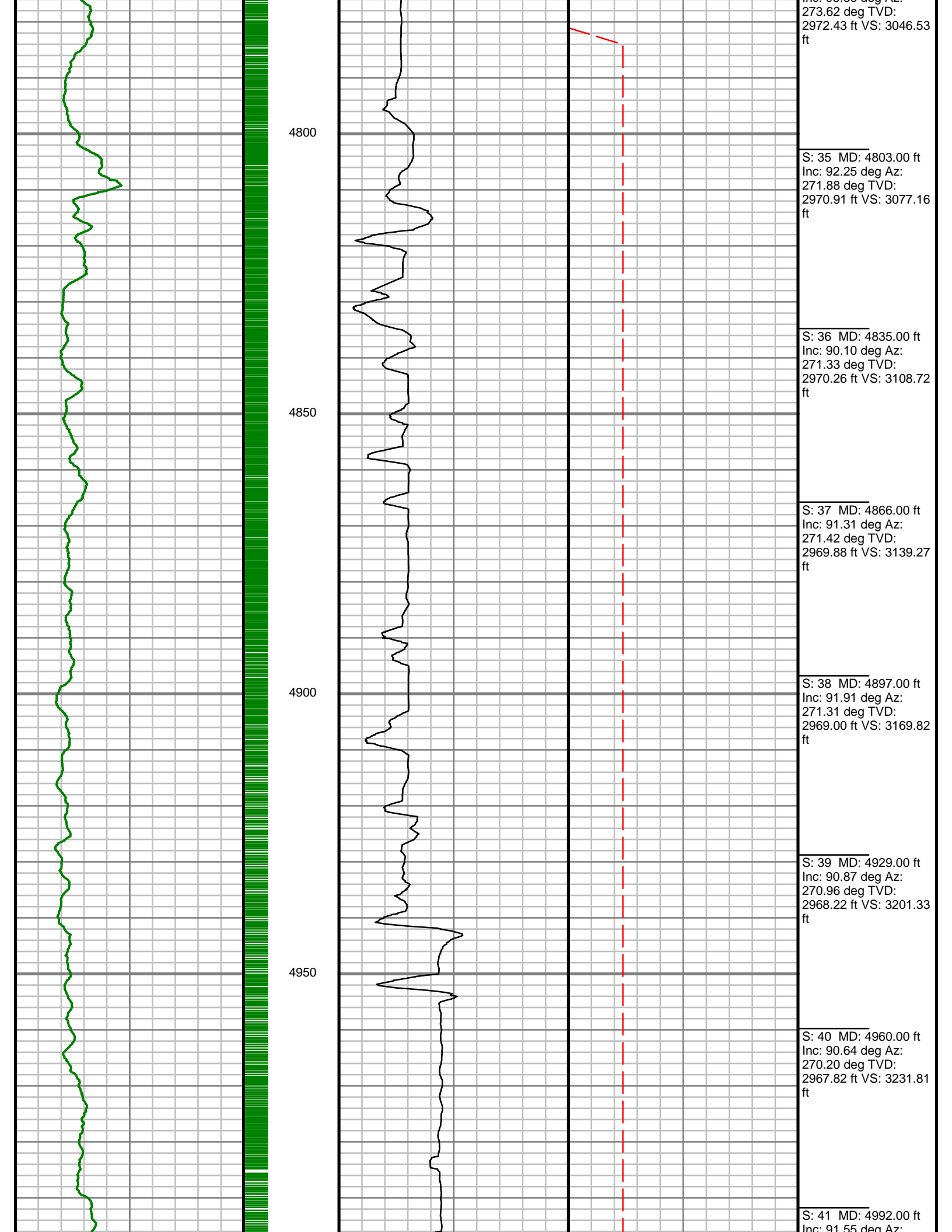
S: 34 MD: 4772.00 ft  
Inc: 93.36 deg Az:

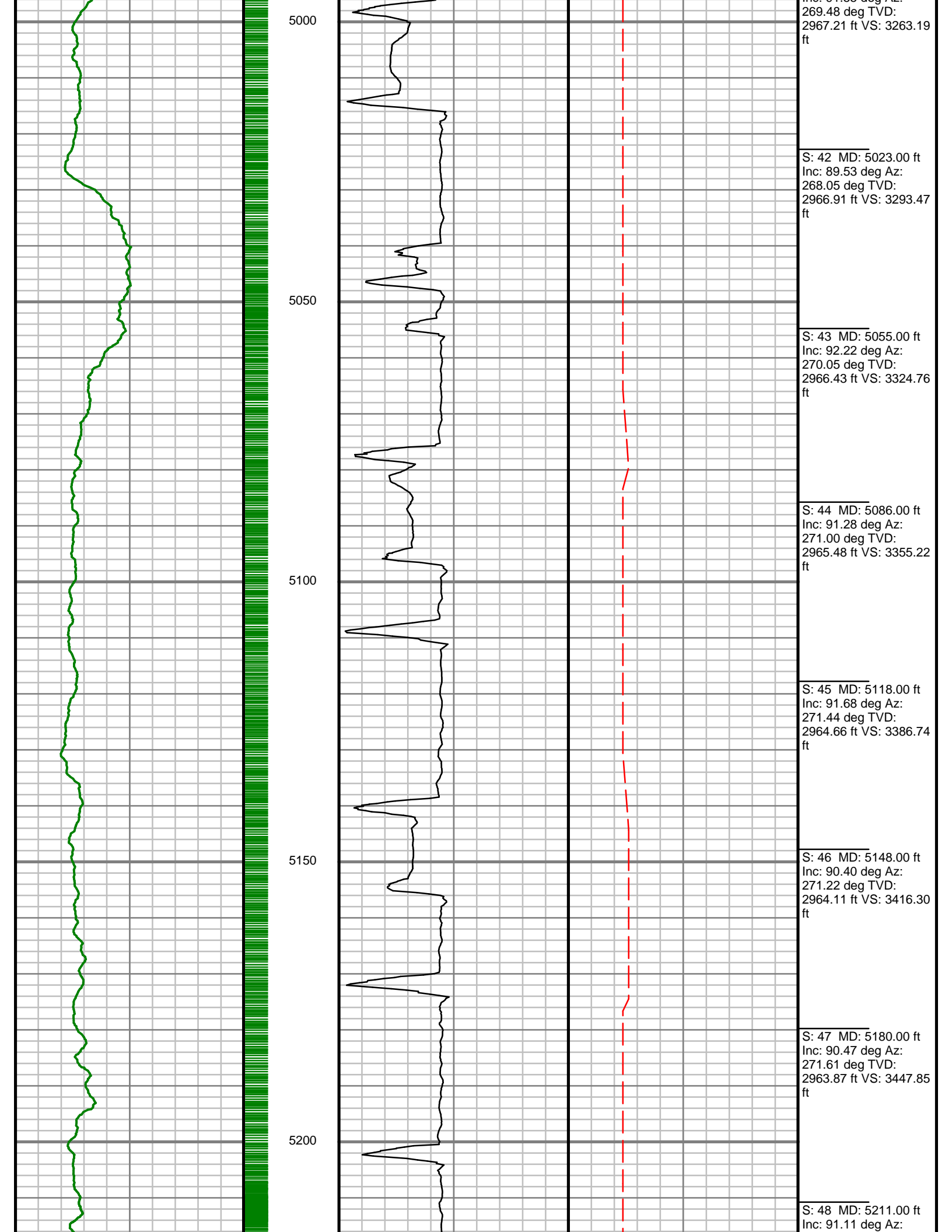
4600

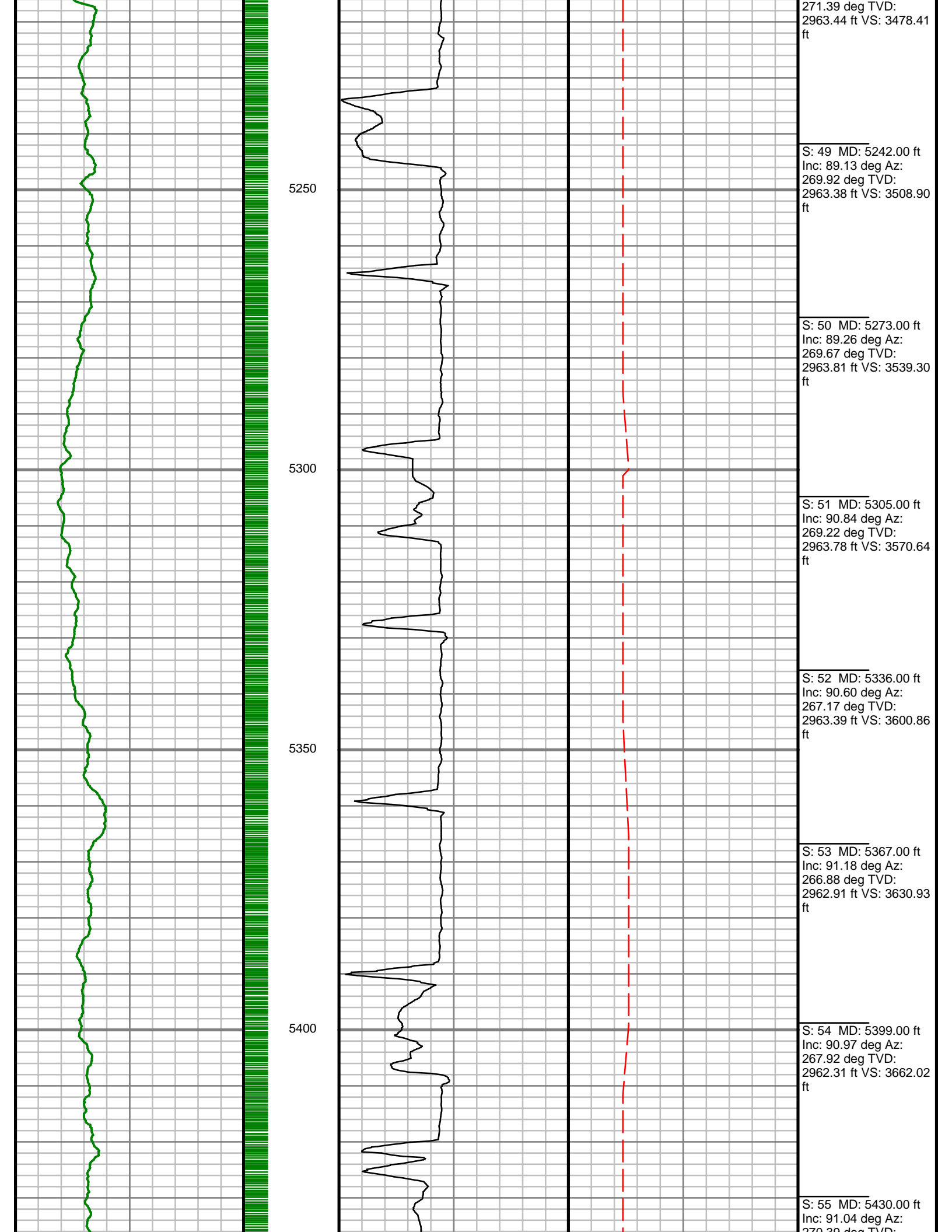
4650

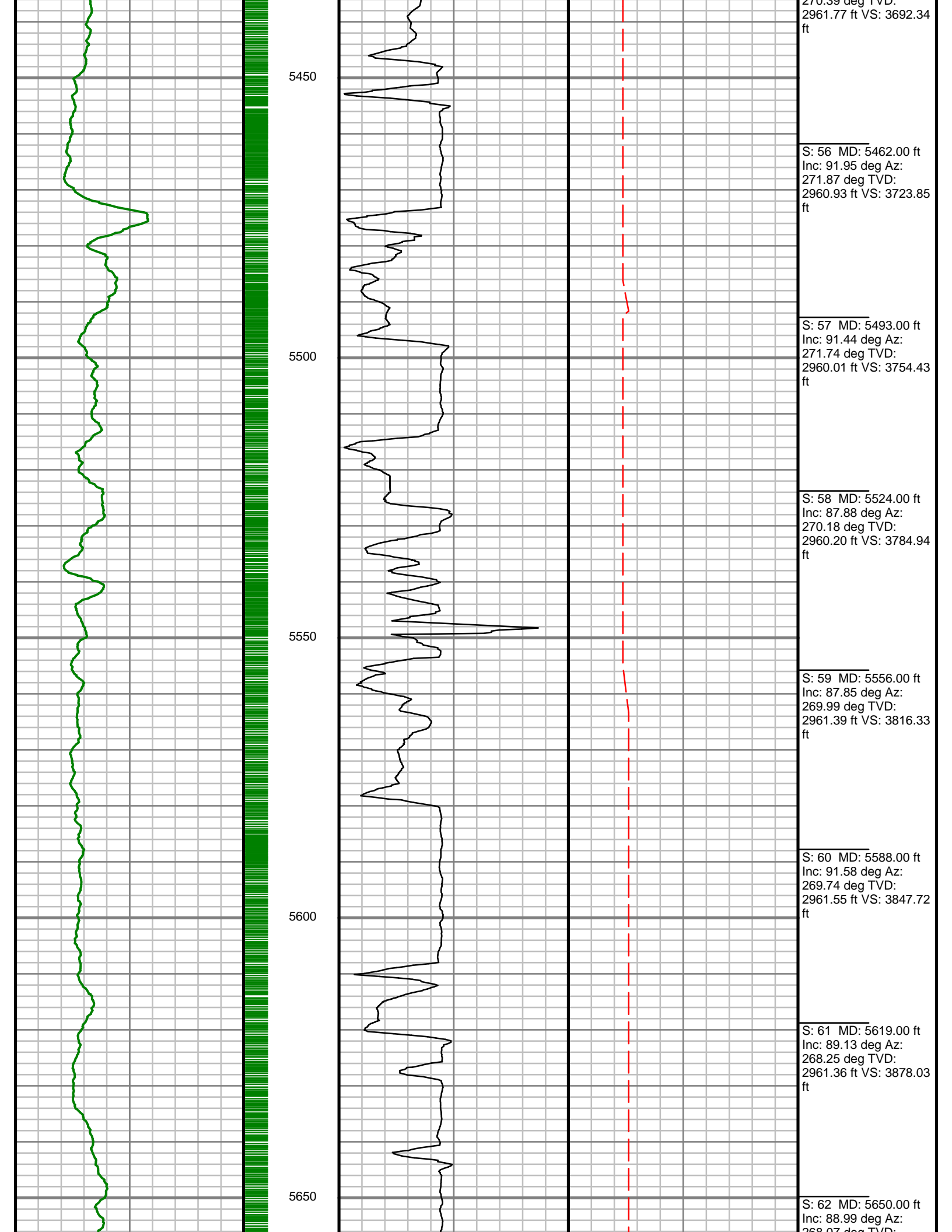
4700

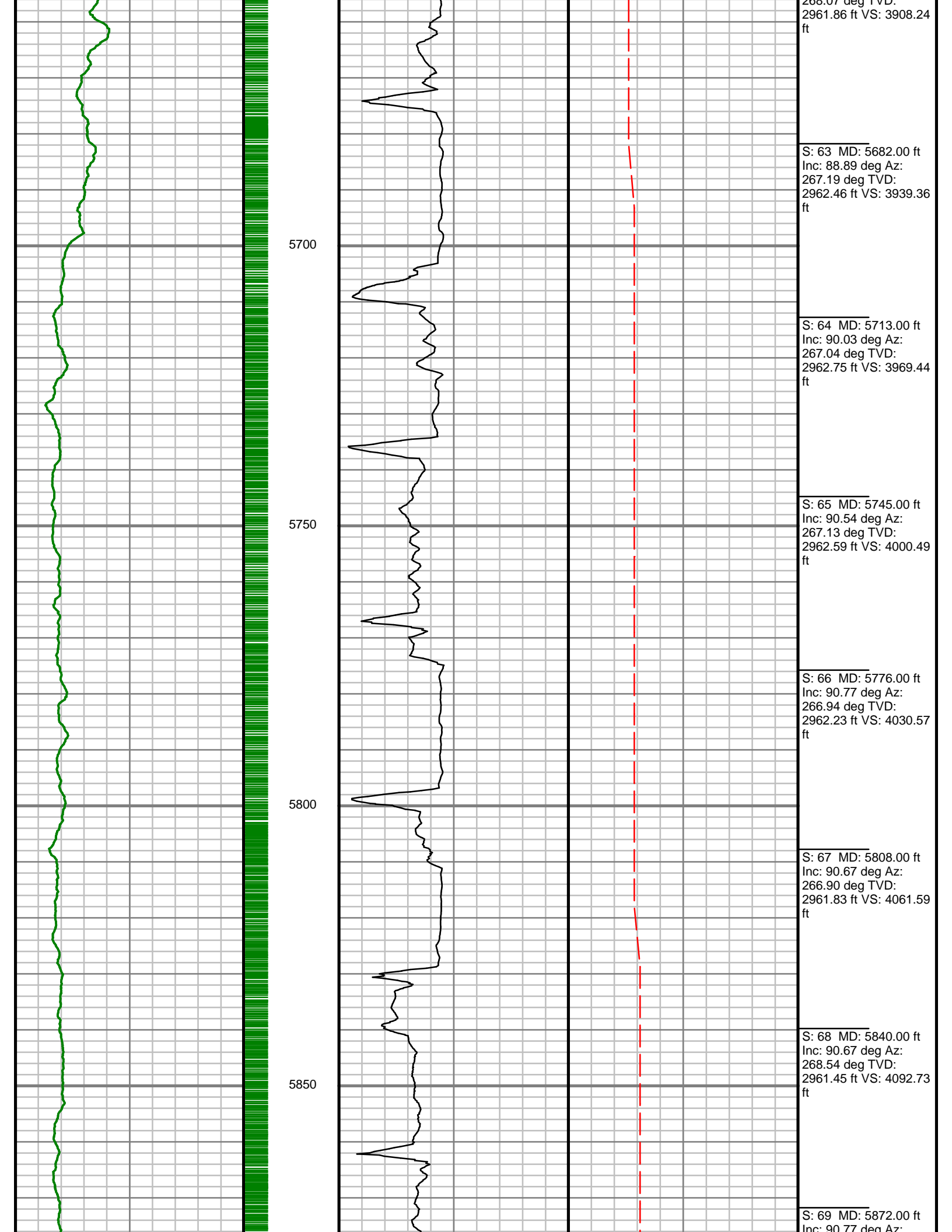
4750

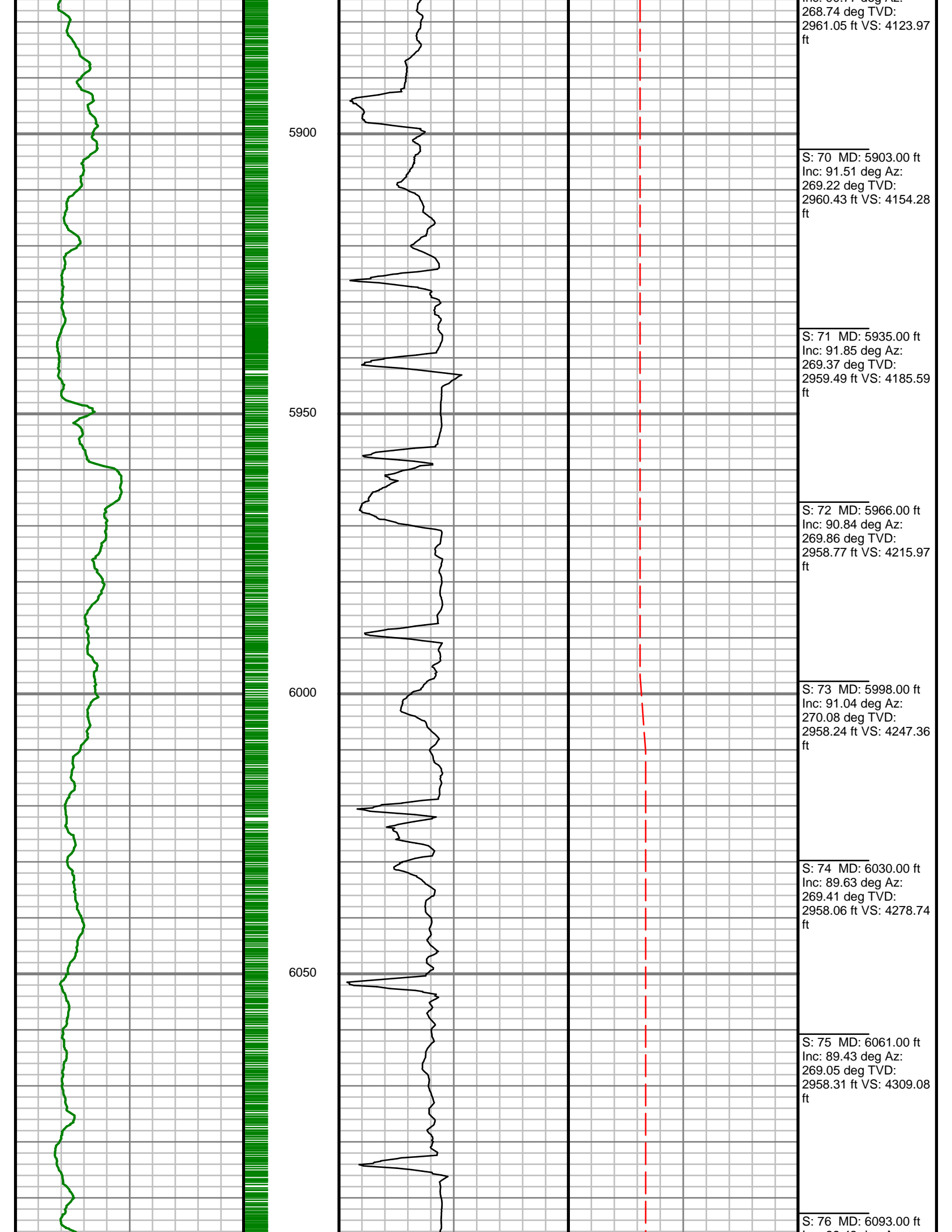


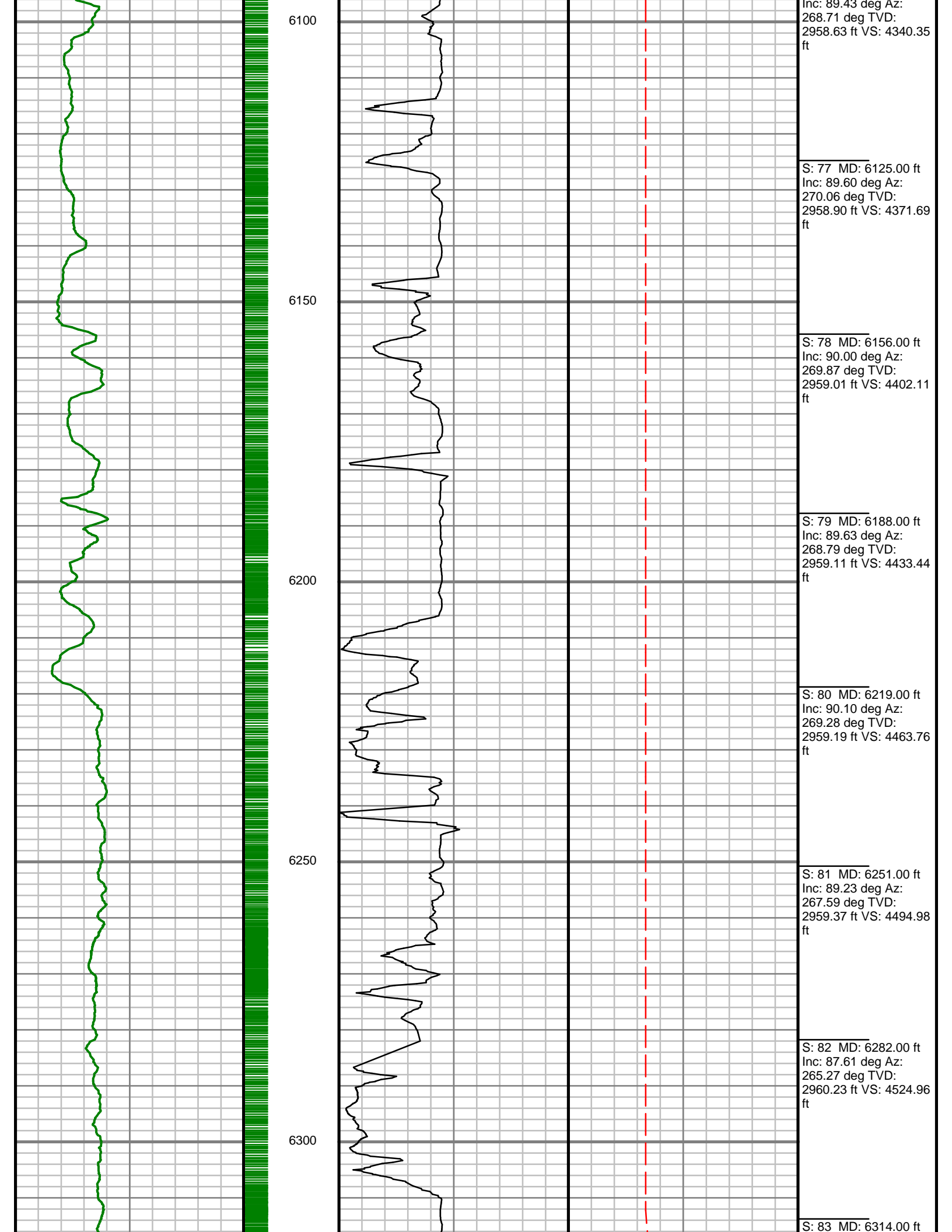












Inc: 89.43 deg Az:  
268.71 deg TVD:  
2958.63 ft VS: 4340.35  
ft

S: 77 MD: 6125.00 ft  
Inc: 89.60 deg Az:  
270.06 deg TVD:  
2958.90 ft VS: 4371.69  
ft

S: 78 MD: 6156.00 ft  
Inc: 90.00 deg Az:  
269.87 deg TVD:  
2959.01 ft VS: 4402.11  
ft

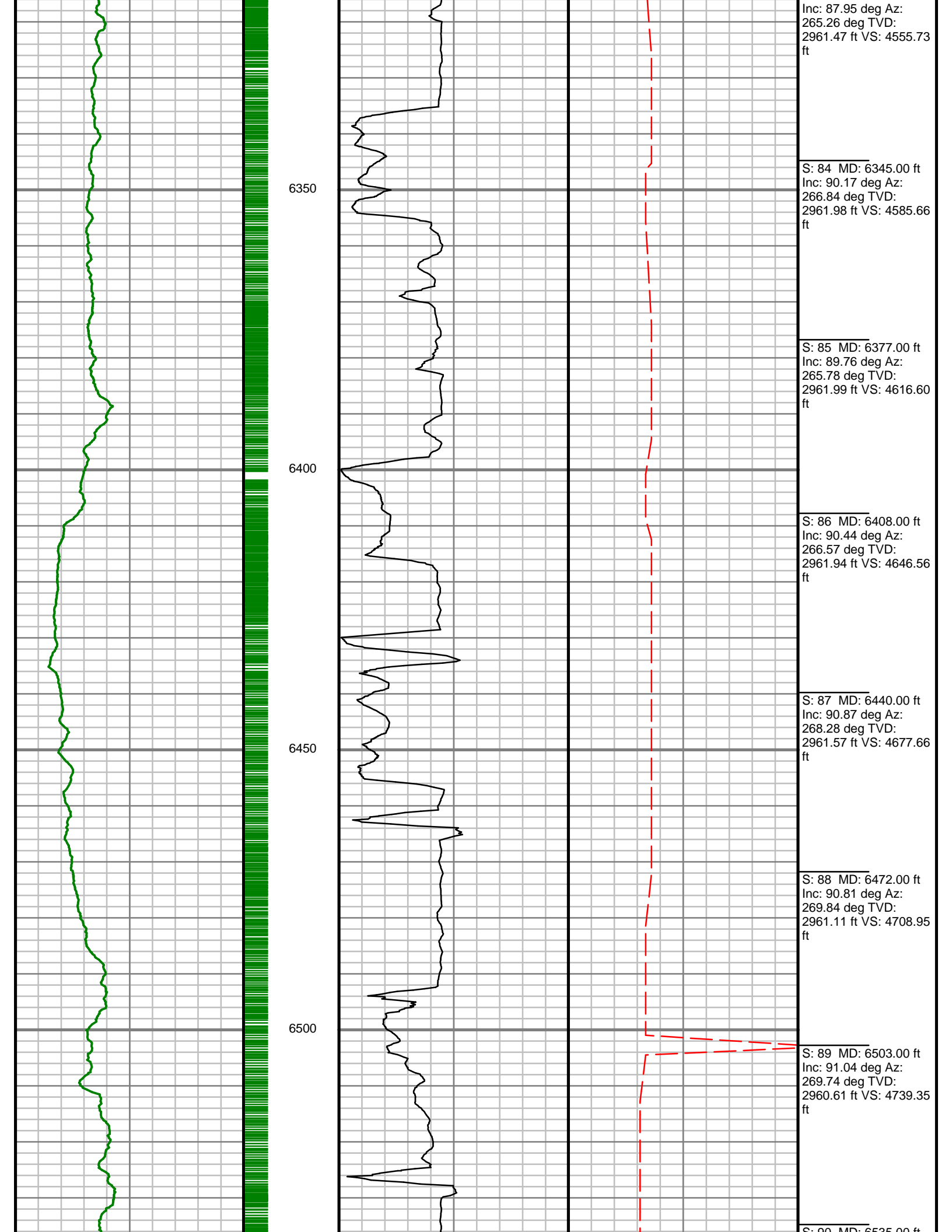
S: 79 MD: 6188.00 ft  
Inc: 89.63 deg Az:  
268.79 deg TVD:  
2959.11 ft VS: 4433.44  
ft

S: 80 MD: 6219.00 ft  
Inc: 90.10 deg Az:  
269.28 deg TVD:  
2959.19 ft VS: 4463.76  
ft

S: 81 MD: 6251.00 ft  
Inc: 89.23 deg Az:  
267.59 deg TVD:  
2959.37 ft VS: 4494.98  
ft

S: 82 MD: 6282.00 ft  
Inc: 87.61 deg Az:  
265.27 deg TVD:  
2960.23 ft VS: 4524.96  
ft

S: 83 MD: 6314.00 ft



Inc: 87.95 deg Az:  
265.26 deg TVD:  
2961.47 ft VS: 4555.73  
ft

S: 84 MD: 6345.00 ft  
Inc: 90.17 deg Az:  
266.84 deg TVD:  
2961.98 ft VS: 4585.66  
ft

S: 85 MD: 6377.00 ft  
Inc: 89.76 deg Az:  
265.78 deg TVD:  
2961.99 ft VS: 4616.60  
ft

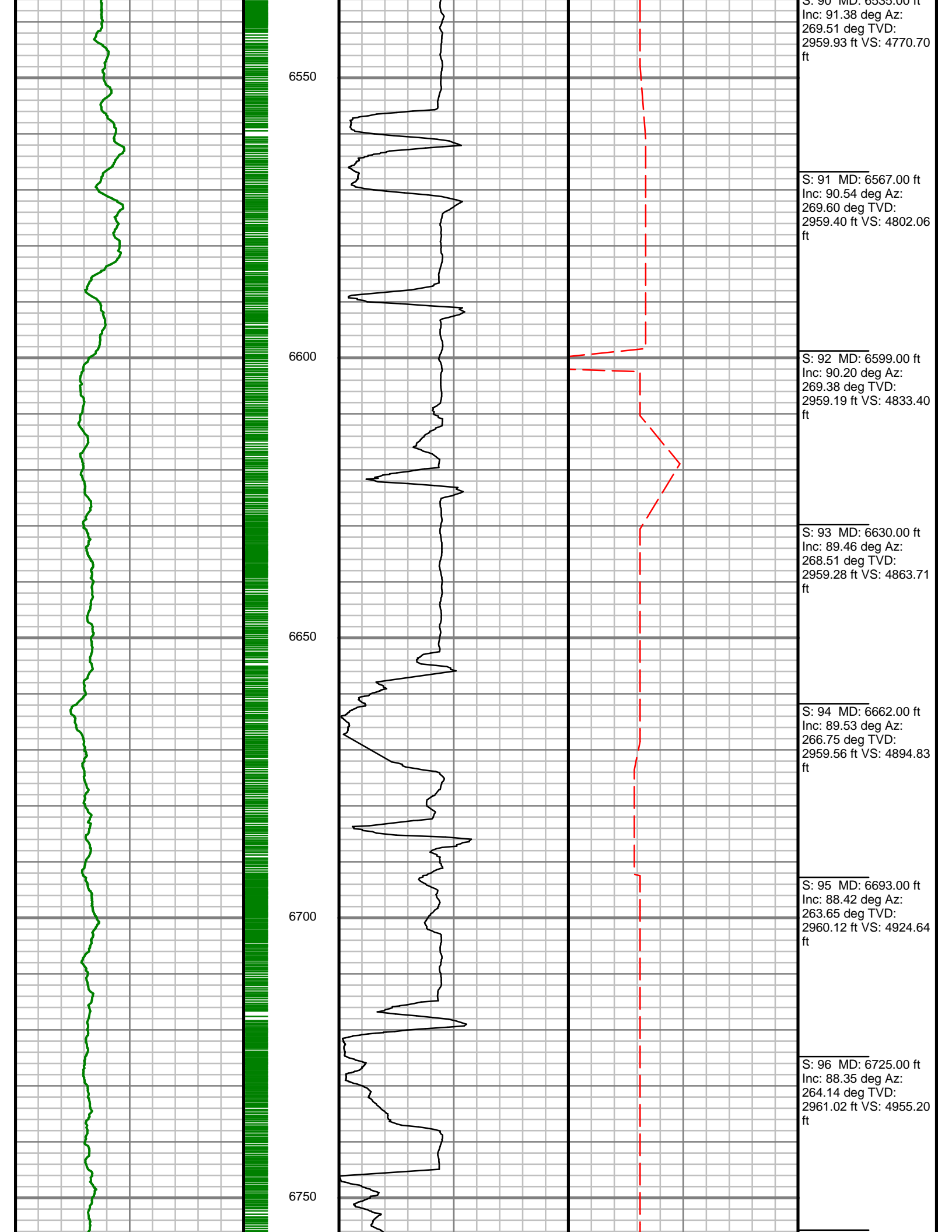
S: 86 MD: 6408.00 ft  
Inc: 90.44 deg Az:  
266.57 deg TVD:  
2961.94 ft VS: 4646.56  
ft

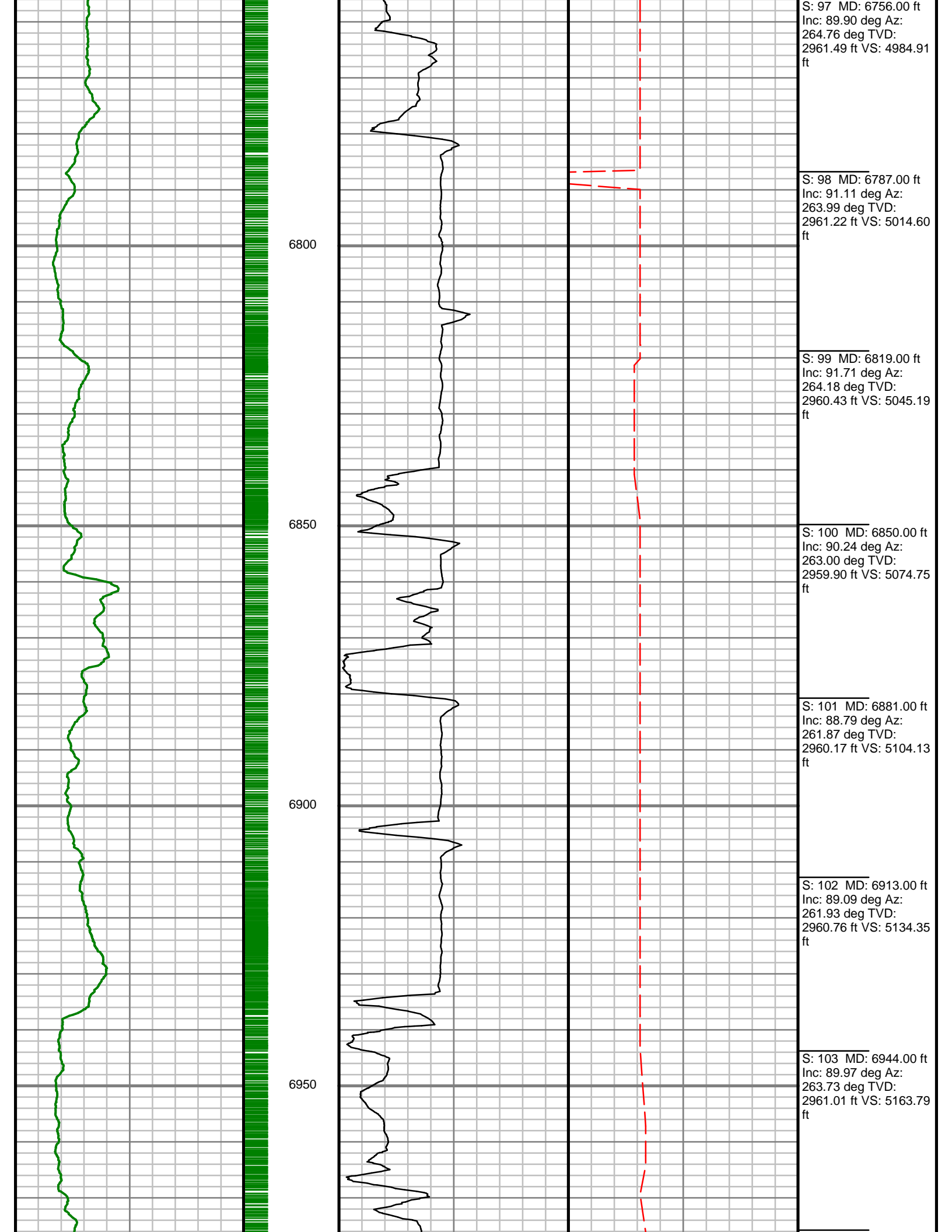
S: 87 MD: 6440.00 ft  
Inc: 90.87 deg Az:  
268.28 deg TVD:  
2961.57 ft VS: 4677.66  
ft

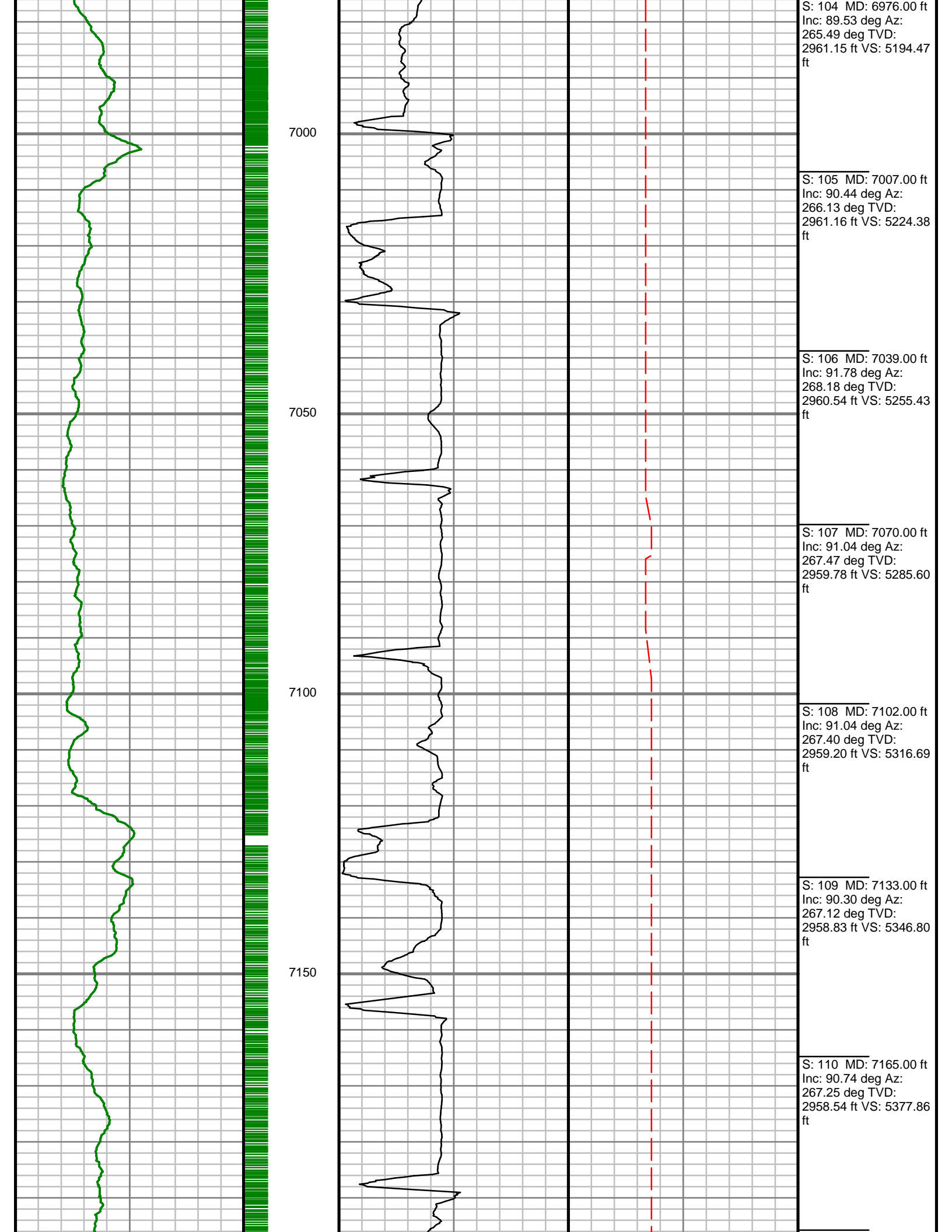
S: 88 MD: 6472.00 ft  
Inc: 90.81 deg Az:  
269.84 deg TVD:  
2961.11 ft VS: 4708.95  
ft

S: 89 MD: 6503.00 ft  
Inc: 91.04 deg Az:  
269.74 deg TVD:  
2960.61 ft VS: 4739.35  
ft

S: 90 MD: 6535.00 ft







S: 104 MD: 6976.00 ft  
Inc: 89.53 deg Az:  
265.49 deg TVD:  
2961.15 ft VS: 5194.47  
ft

S: 105 MD: 7007.00 ft  
Inc: 90.44 deg Az:  
266.13 deg TVD:  
2961.16 ft VS: 5224.38  
ft

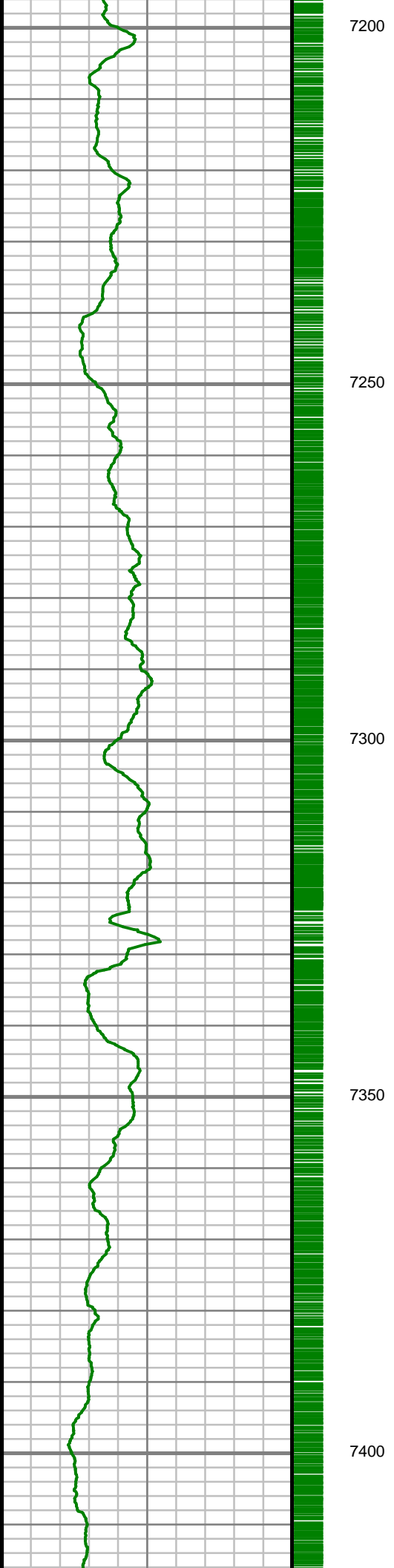
S: 106 MD: 7039.00 ft  
Inc: 91.78 deg Az:  
268.18 deg TVD:  
2960.54 ft VS: 5255.43  
ft

S: 107 MD: 7070.00 ft  
Inc: 91.04 deg Az:  
267.47 deg TVD:  
2959.78 ft VS: 5285.60  
ft

S: 108 MD: 7102.00 ft  
Inc: 91.04 deg Az:  
267.40 deg TVD:  
2959.20 ft VS: 5316.69  
ft

S: 109 MD: 7133.00 ft  
Inc: 90.30 deg Az:  
267.12 deg TVD:  
2958.83 ft VS: 5346.80  
ft

S: 110 MD: 7165.00 ft  
Inc: 90.74 deg Az:  
267.25 deg TVD:  
2958.54 ft VS: 5377.86  
ft



7200

7250

7300

7350

7400

S: 111 MD: 7196.00 ft  
Inc: 90.84 deg Az:  
266.80 deg TVD:  
2958.12 ft VS: 5407.93  
ft

S: 112 MD: 7228.00 ft  
Inc: 90.64 deg Az:  
265.97 deg TVD:  
2957.70 ft VS: 5438.88  
ft

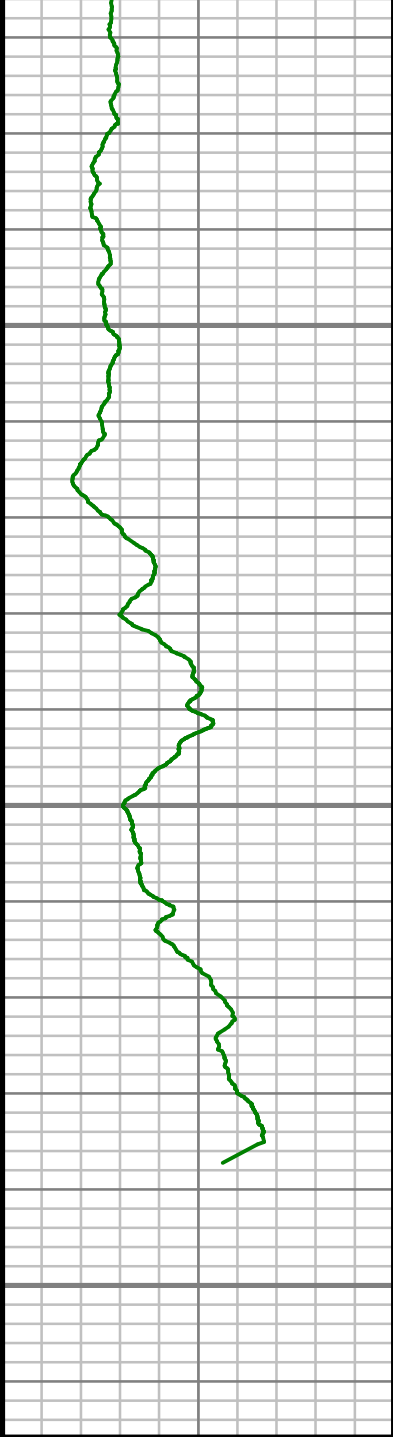
S: 113 MD: 7259.00 ft  
Inc: 91.04 deg Az:  
265.96 deg TVD:  
2957.25 ft VS: 5468.81  
ft

S: 114 MD: 7290.00 ft  
Inc: 92.11 deg Az:  
266.54 deg TVD:  
2956.39 ft VS: 5498.76  
ft

S: 115 MD: 7321.00 ft  
Inc: 93.53 deg Az:  
268.15 deg TVD:  
2954.87 ft VS: 5528.84  
ft

S: 116 MD: 7353.00 ft  
Inc: 92.08 deg Az:  
268.48 deg TVD:  
2953.30 ft VS: 5560.01  
ft

S: 117 MD: 7385.00 ft  
Inc: 91.88 deg Az:  
269.68 deg TVD:  
2952.20 ft VS: 5591.30  
ft

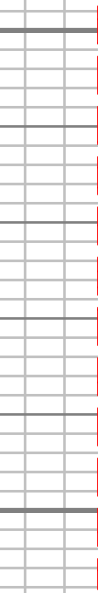
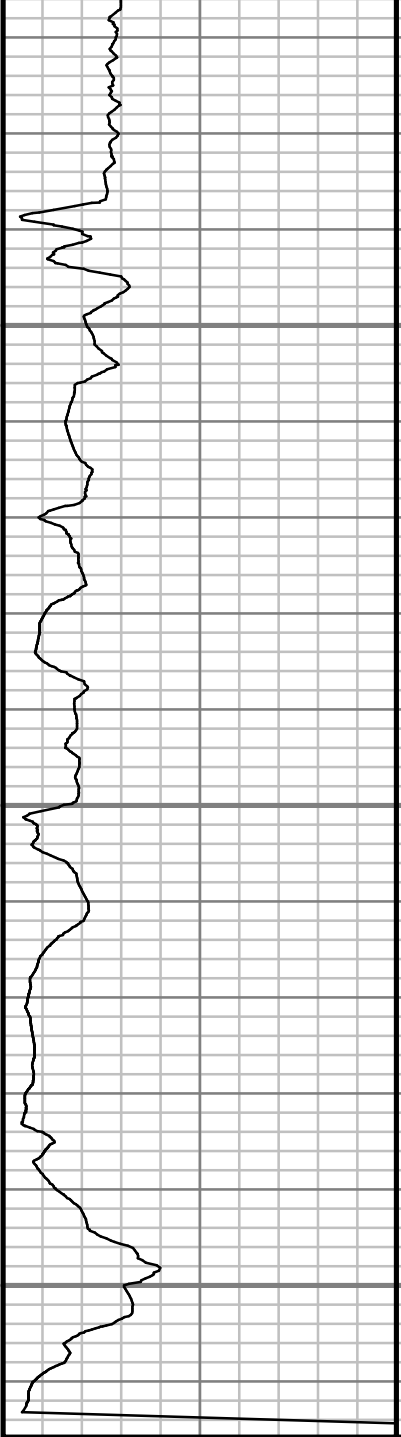


7450

7500

7550

MEASURED DEPTH  
1.240 (ft)



S: 118 MD: 7416.00 ft  
Inc: 92.39 deg Az:  
269.11 deg TVD:  
2951.04 ft VS: 5621.63  
ft

S: 119 MD: 7447.00 ft  
Inc: 92.92 deg Az:  
268.89 deg TVD:  
2949.61 ft VS: 5651.92  
ft

S: 120 MD: 7479.00 ft  
Inc: 93.19 deg Az:  
268.68 deg TVD:  
2947.90 ft VS: 5683.14  
ft

S: 121 MD: 7510.00 ft  
Inc: 93.60 deg Az:  
268.50 deg TVD:  
2946.06 ft VS: 5713.35  
ft

Gamma Ray (GR)		
0	Unit = aapi	150

Rate of Penetration (ROP)		
0	Unit = ft/hr	400

Tool Temperature (T-TEMP)		
100	Unit = °F	200

Comments
----------



GAMMA RAY

5" = 100' FEET MD