



Weatherford

COMPENSATED NEUTRON LOG

COMPANY CATAMOUNT ENERGY PARTNERS
WELL CAMPBELL 33-7-4#1H
FIELD IGNACIO BLANCO
COUNTY LA PLATA STATE CO

COMPANY CATAMOUNT ENERGY PARTNERS
WELL CAMPBELL 33-7-4#1H
FIELD IGNACIO BLANCO
COUNTY LA PLATA STATE COLORADO

LOCATION:
989' FSL & 1178' FWL
API#05-067-09902000
SEC. 4 TWP. 33N RGE. 7W
OTHER SERVICES:
JB-GR 4.688"
CBL

PERM. DATUM GROUND LEVEL ELEV. 6692'
LOG MEASURED FROM K.B. 13 FT. ABOVE PERMANENT DATUM ELEV.: K.B. 6705'
DRILLING MEASURED FROM KELLY BUSHING D.F. 6704'
G.L. 6692'

DATE	24-JUN-2014						
RUN NO.	ONE						
DEPTH DRILLER	4265'						
DEPTH LOGGER	4060'						
BIT. LOG INTERVAL	4058'						
TOP LOG INTERVAL	3500'						
OPEN HOLE SIZE	7.875"						
TYPE FLUID	WATER						
DENS.	N/A						
VISC.	N/A						
MAX. REC. TEMP.	F N/A						
EST. CEMENT TOP	SEE CBL						
TIME WELL READY	ROA						
TIME LOGGER ON BIT.	SEE LOG						
EQUIP. NO.	14247						
LOCATION	FARMINGTON						
RECORDED BY	C. CALIENDO						
WITNESSED BY	L. DAVIS						
BOREHOLE RECORD							
RUN NO.	BIT	FROM	TO	SIZE	WGT.	FROM	TO
TUBING RECORD							
CASING RECORD	SIZE	WT/FT	GRADE	TYPE JOINT	TOP	BOTTOM	
SURFACE STRING	8-5/8"	24	J55	STC	SURF	517'	
PROT. STRING							
PROD. STRING	5.5"	17	J55	LTC	SURF	4102'	
LINER							

All interpretations of log data are opinions based on inferences from electrical or other measurements. We do not guarantee the accuracy or correctness of any interpretation or recommendation and we shall not be liable or responsible for any loss, cost, damages or expenses incurred or sustained by anyone resulting from any interpretation or recommendation made by any of our employees or agents.

REMARKS Rig: EXPRESS (14247) Service Order # 90922067
LOG WAS RAN WITH A 13' K.B. BHT N/A °F

Prints: 4

THANK YOU FOR CHOOSING WEATHERFORD WIRELINE SERVICES FARMINGTON, NM (505)564-9131

EQUIPMENT DATA				
Bit Size	Run No.	Tool Type	Tool No.	Other
7.875"	ONE	CNT	105	
NEW DRILL	ONE	CTBA	236	
Surface Pressure				
Shut In	Flowing			

DEPTH SCALE: 2":100'

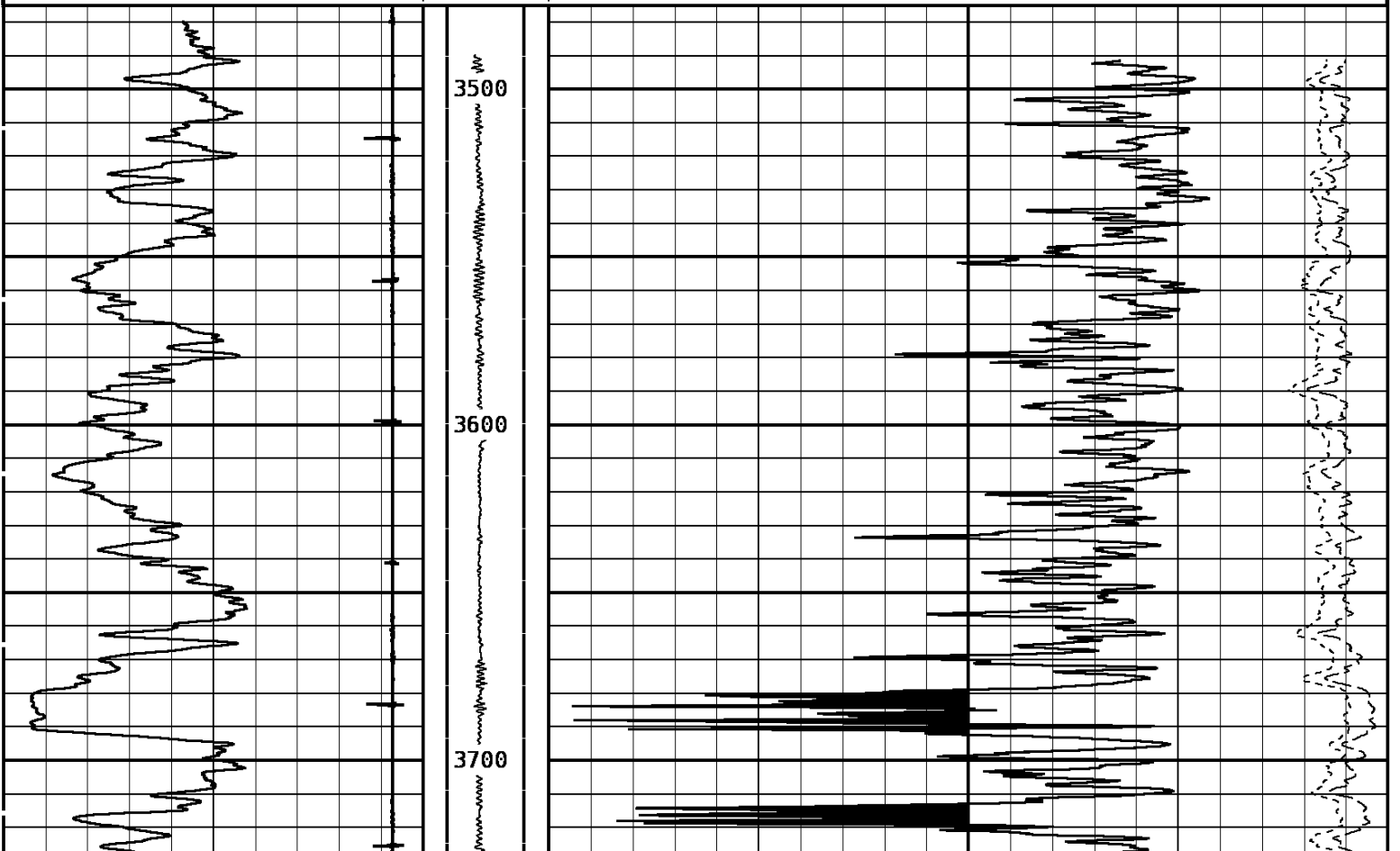
PROCESSED VERSION: 2012.07.18.162"

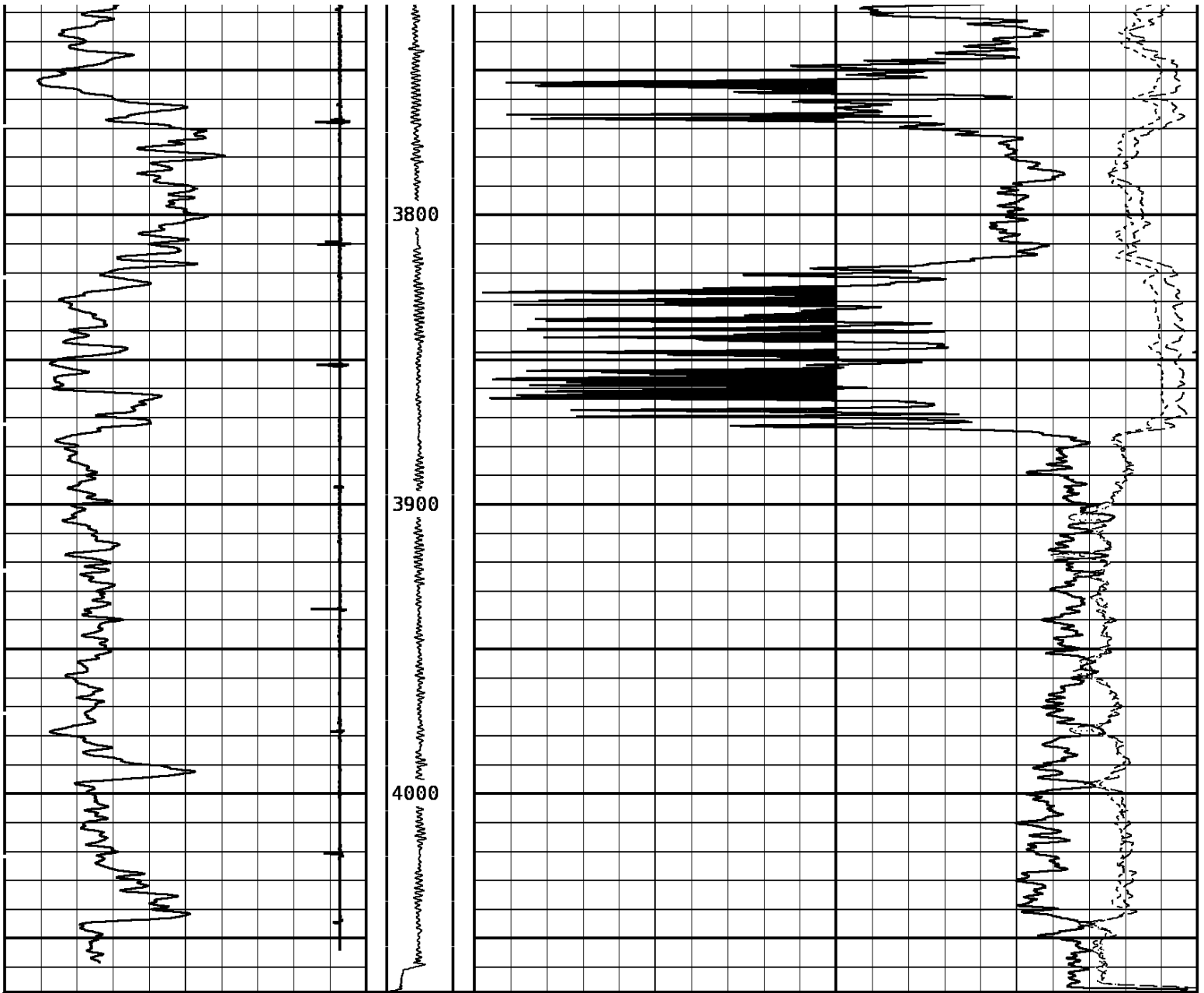
MAIN PASS

90822067 CNTMF

FINISH DEPTH: 3490.1 Feet DIRECTION: UP DATE: 06/24/2014 TIME: 14:33 MODE: ORIGINAL

Collar Locator				Neutron LS CPS	
-1800	Millivolts	140		250	Counts/Second 0
Gamma Ray		Tension		Neut. Porosity (SS)	
0	API	200	0 2000	1.00	Decimal 0.00





Gamma Ray		Tension	Neut. Porosity (SS)	
0	API	200	0	2000
			1.00	Decimal
				0.00
Collar Locator				Neutron SS CPS
-1800	Millivolts	140		400
				Counts/Second
				0
				Neutron LS CPS
				250
				Counts/Second
				0

START DEPTH: 4068.7 DIRECTION: UP DATE: 06/24/2014 TIME: 14:33 MODE: ORIGINAL
 90822067 CNTMF

MAIN PASS

DEPTH SCALE: 5":100'

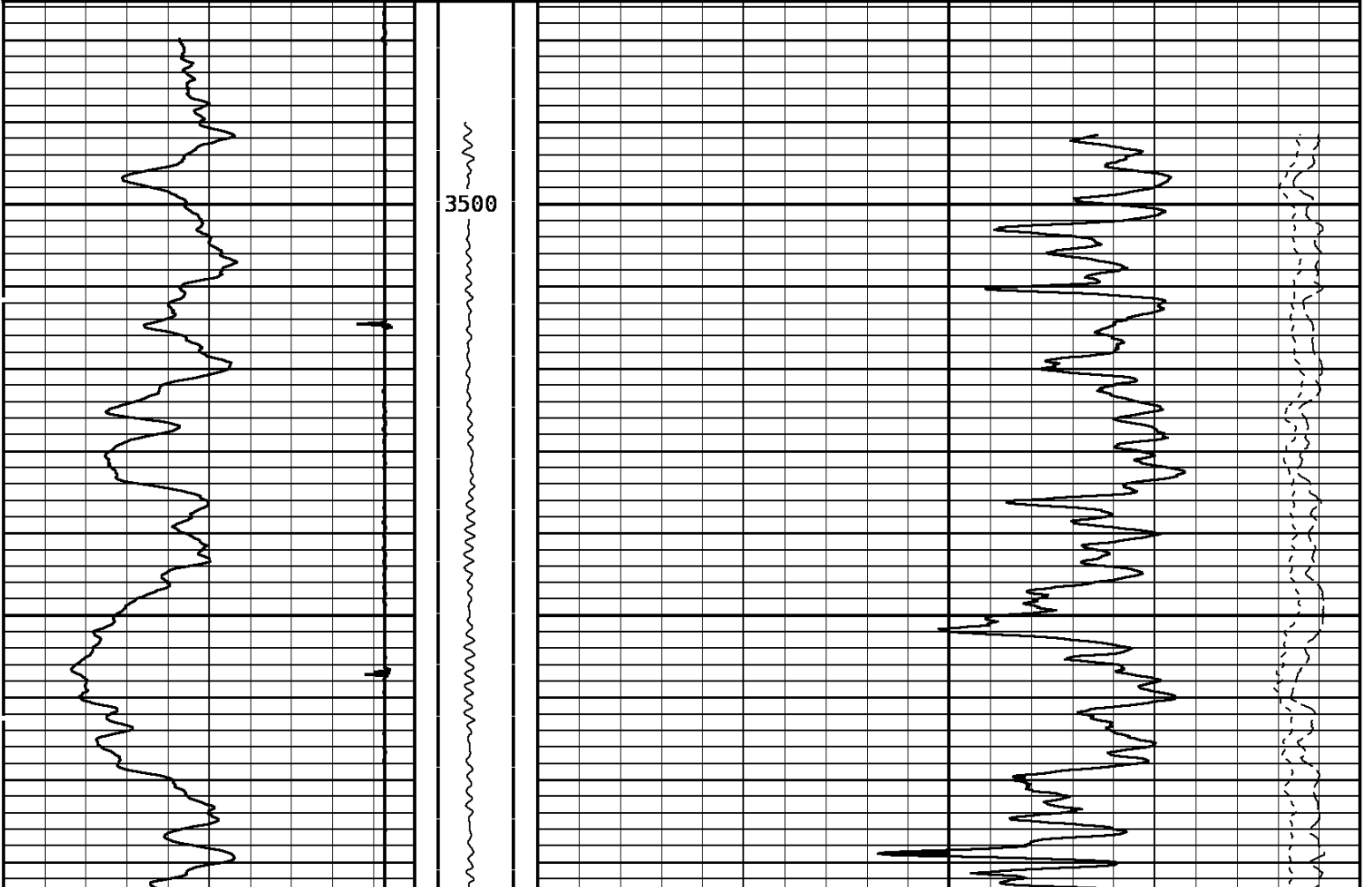
PROCESSED VERSION: 2012.07.18.162"

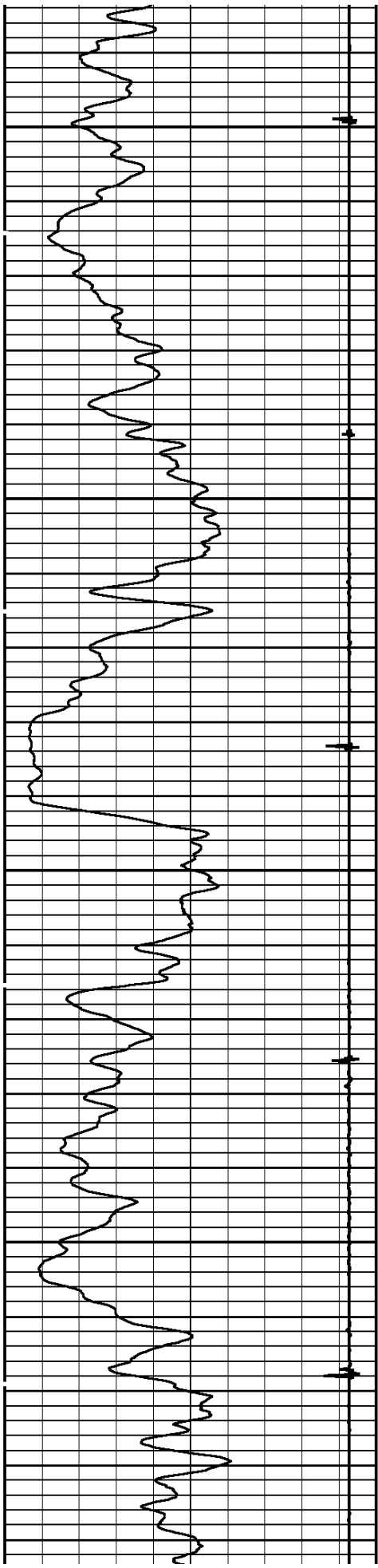
MAIN PASS

90822067 CNTMF

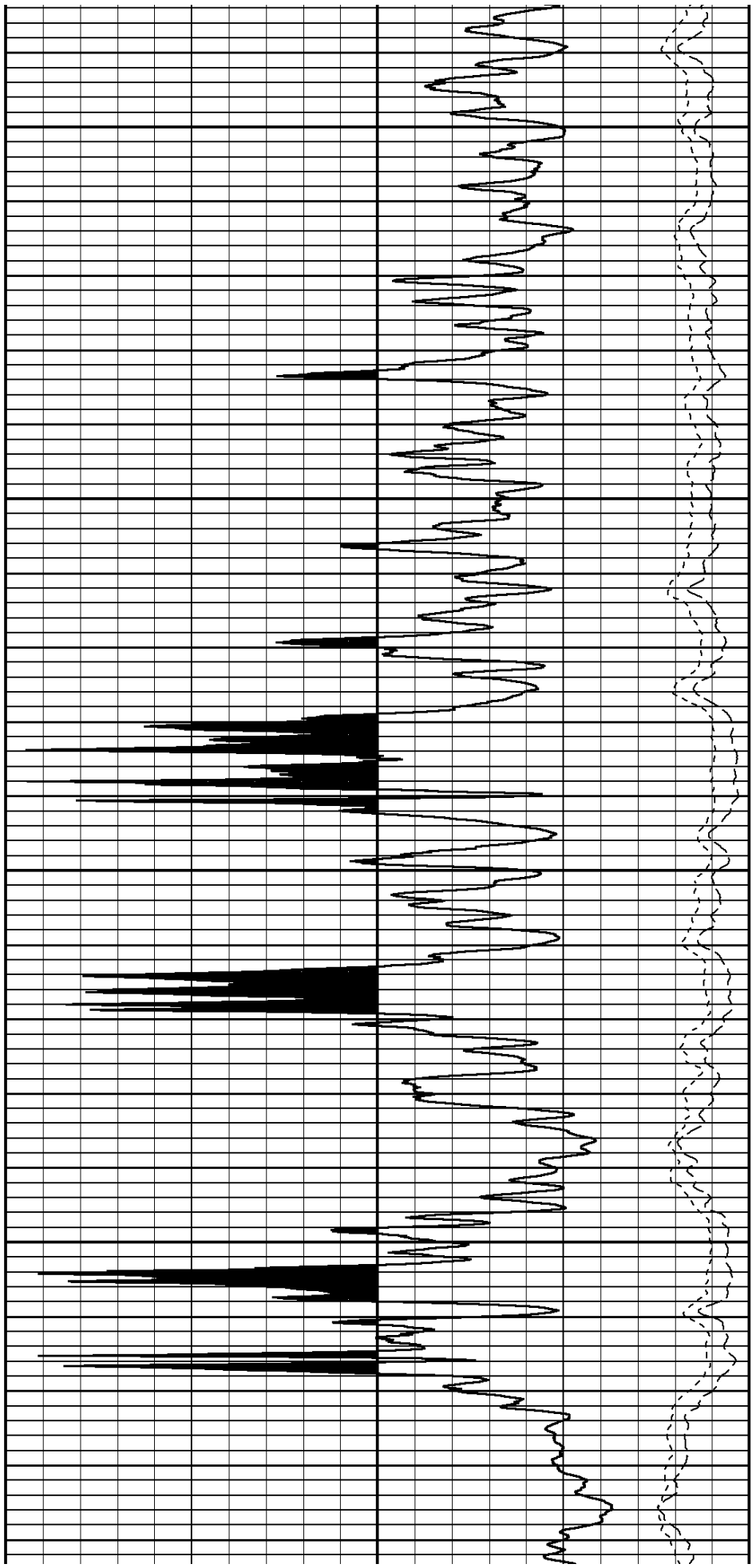
FINISH DEPTH: 3490.1 Feet DIRECTION: UP DATE: 06/24/2014 TIME: 14:33 MODE: ORIGINAL
RECOMPUTED DATE: 06/24/2014 TIME: 14:33

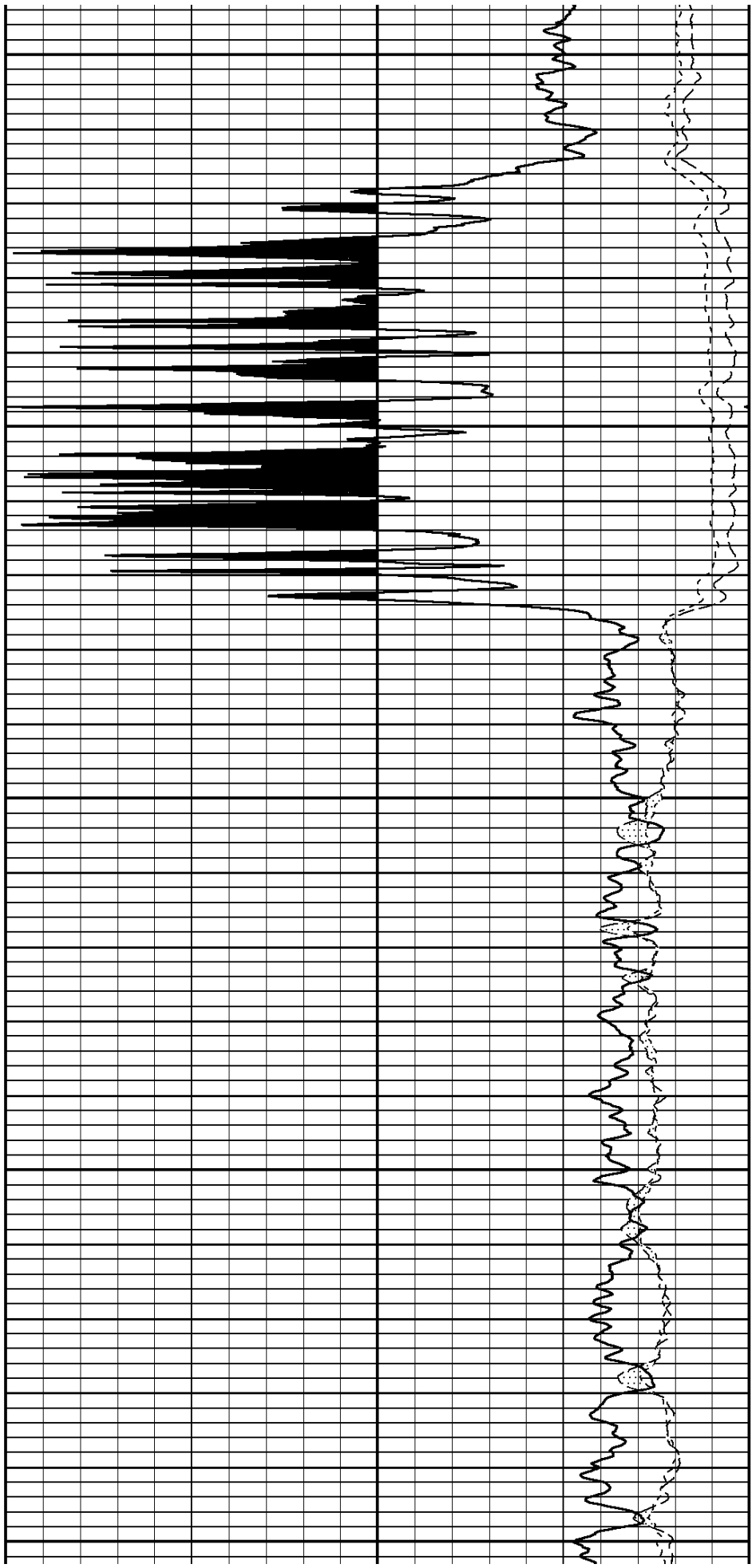
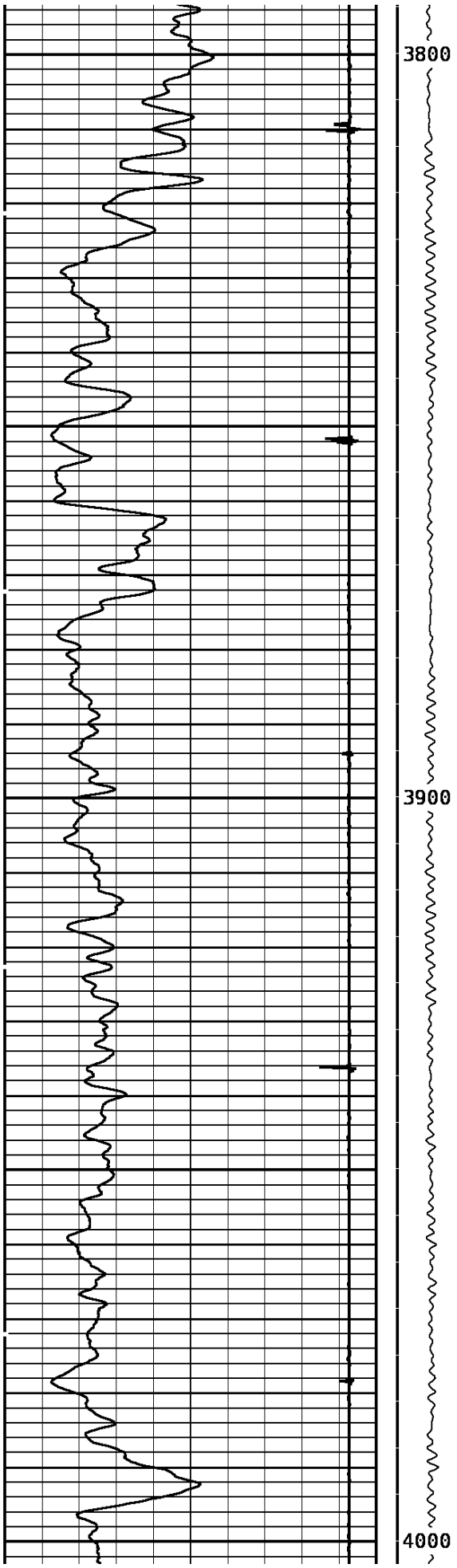
Collar Locator				Neutron LS CPS	
-1800	Millivolts	140		250	Counts/Second 0
Gamma Ray				Neutron SS CPS	
0	API	200	0	400	Counts/Second 0
		Tension		Neut. Porosity (SS)	
		0	2000	1.00	Decimal 0.00

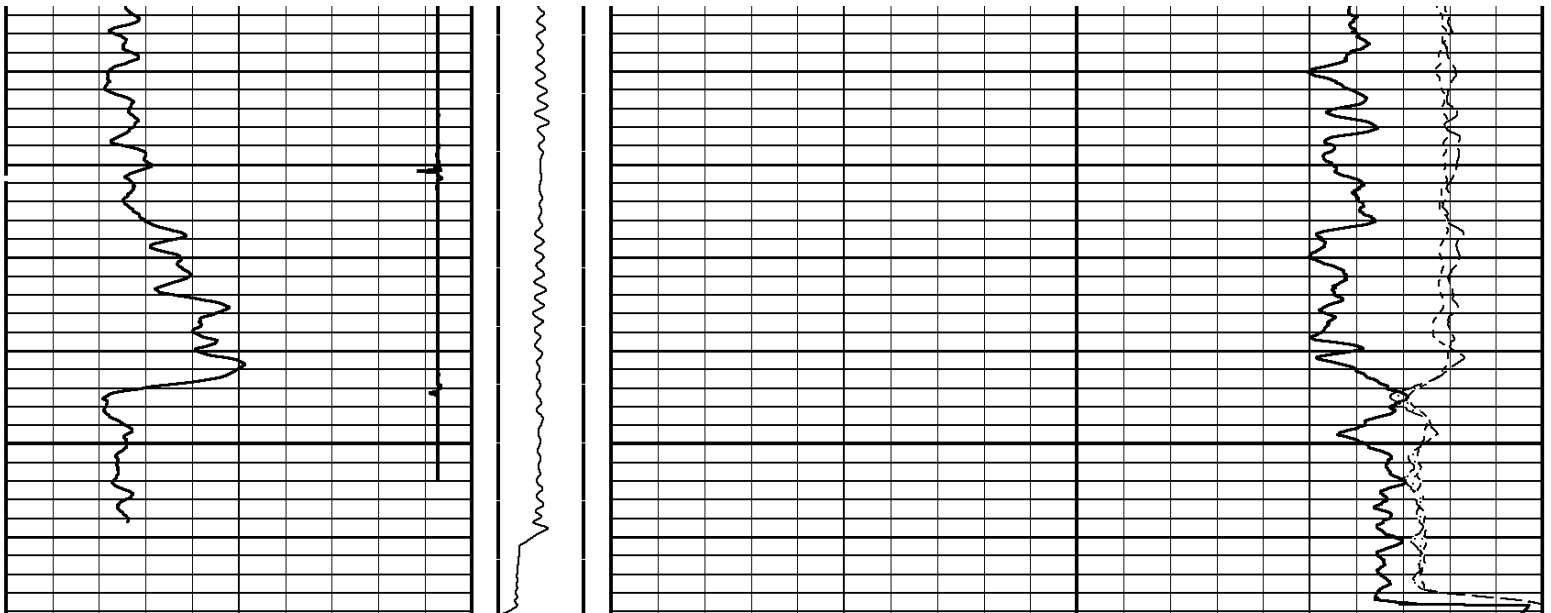




3600
3700







Gamma Ray		Tension		Neut. Porosity (SS)	
0	API	200	0	2000	1.00
Collar Locator				Neutron SS CPS	
-1800	Millivolts	140		400	Counts/Second
				Neutron LS CPS	
				250	Counts/Second

START DEPTH: **4068.7** DIRECTION: **UP** DATE: **06/24/2014** TIME: **14:33** MODE: **ORIGINAL**
 RECOMPUTED DATE: **06/24/2014** TIME: **14:33**
90822067 CNTMF

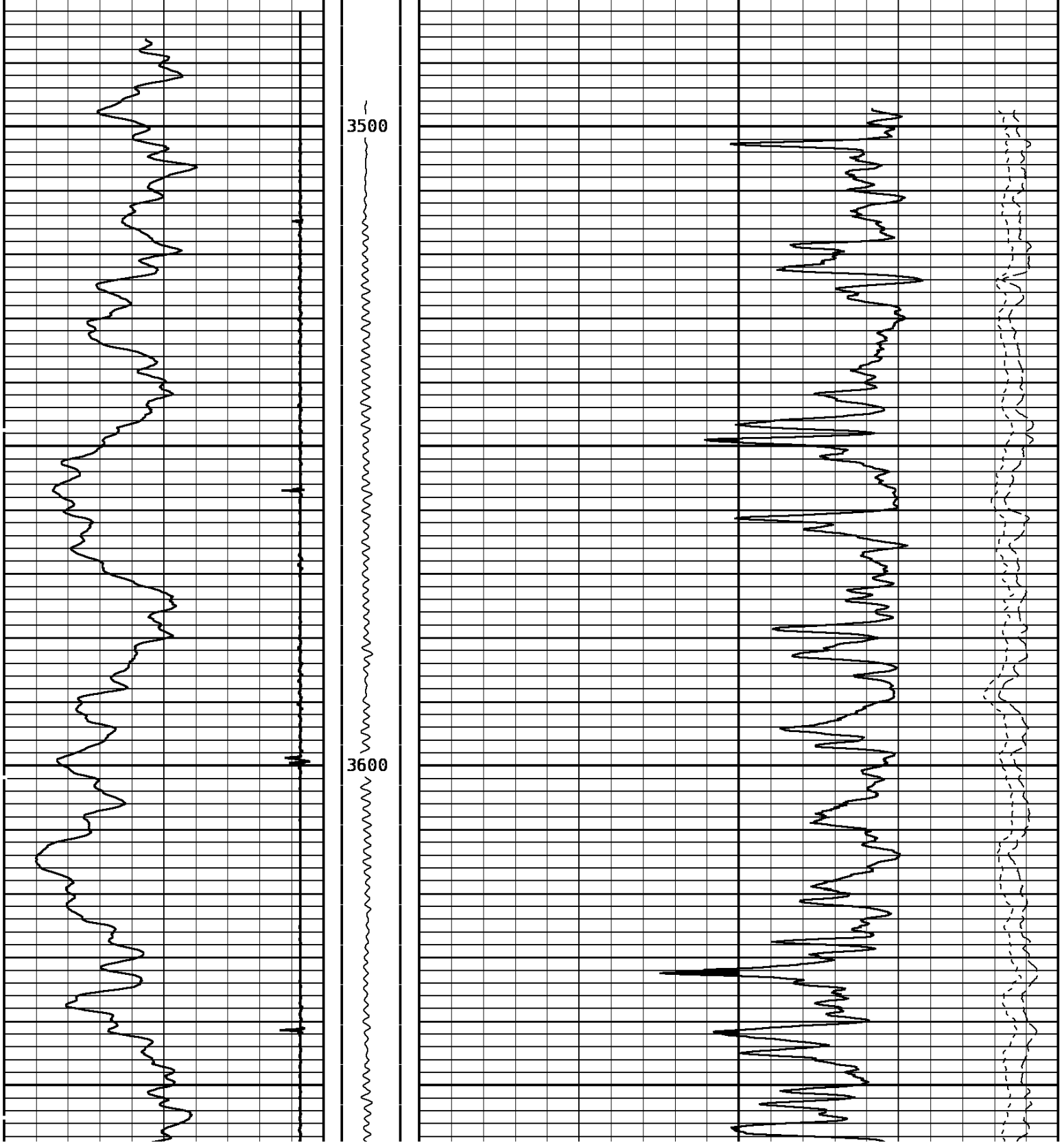
MAIN PASS
 DEPTH SCALE: **5":100'** LOGGED VERSION: **2012.07.18.162"**

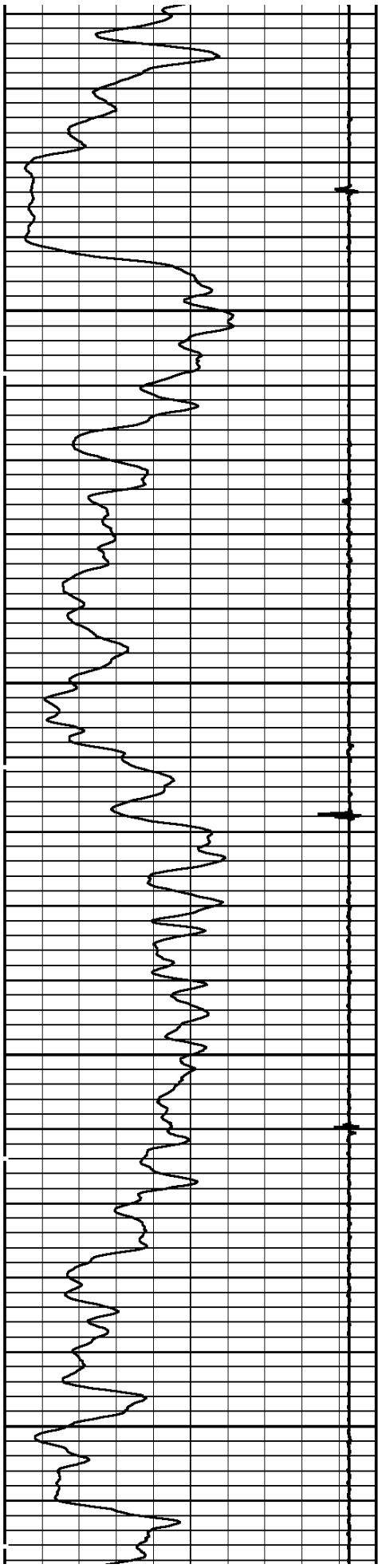
DEPTH SCALE: **5":100'** PROCESSED VERSION: **2012.07.18.162"**
REPEAT PASS

90822067 CNTRF
 FINISH DEPTH: **3479.2** Feet DIRECTION: **UP** DATE: **06/24/2014** TIME: **14:18** MODE: **ORIGINAL**

Neutron LS CPS

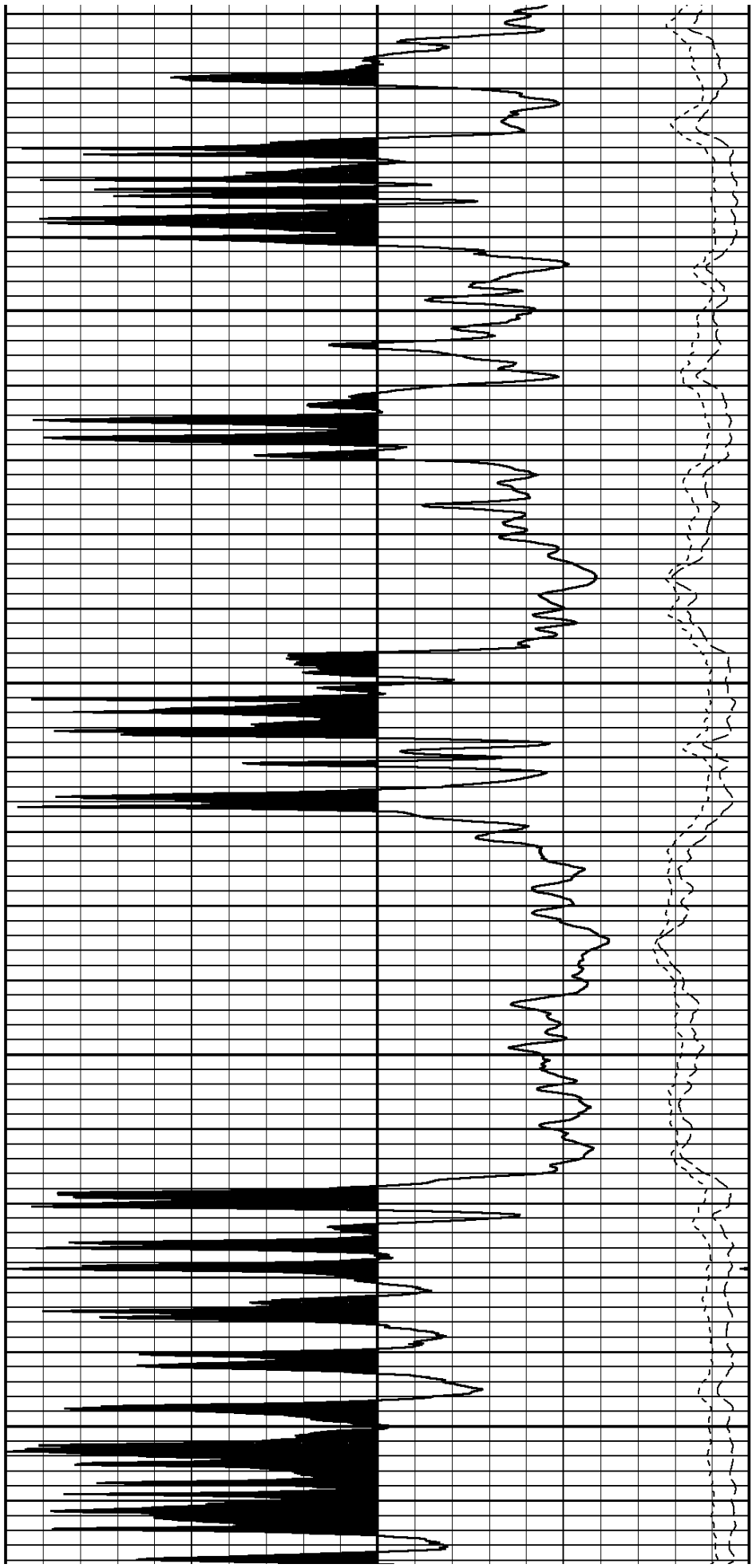
Collar Locator			250 Counts/Second 0		
-1800	Millivolts	140	Neutron SS CPS		
Gamma Ray			400 Counts/Second 0		
0	API	200	Neut. Porosity (SS)		
Tension		0 2000	1.00		Decimal 0.00

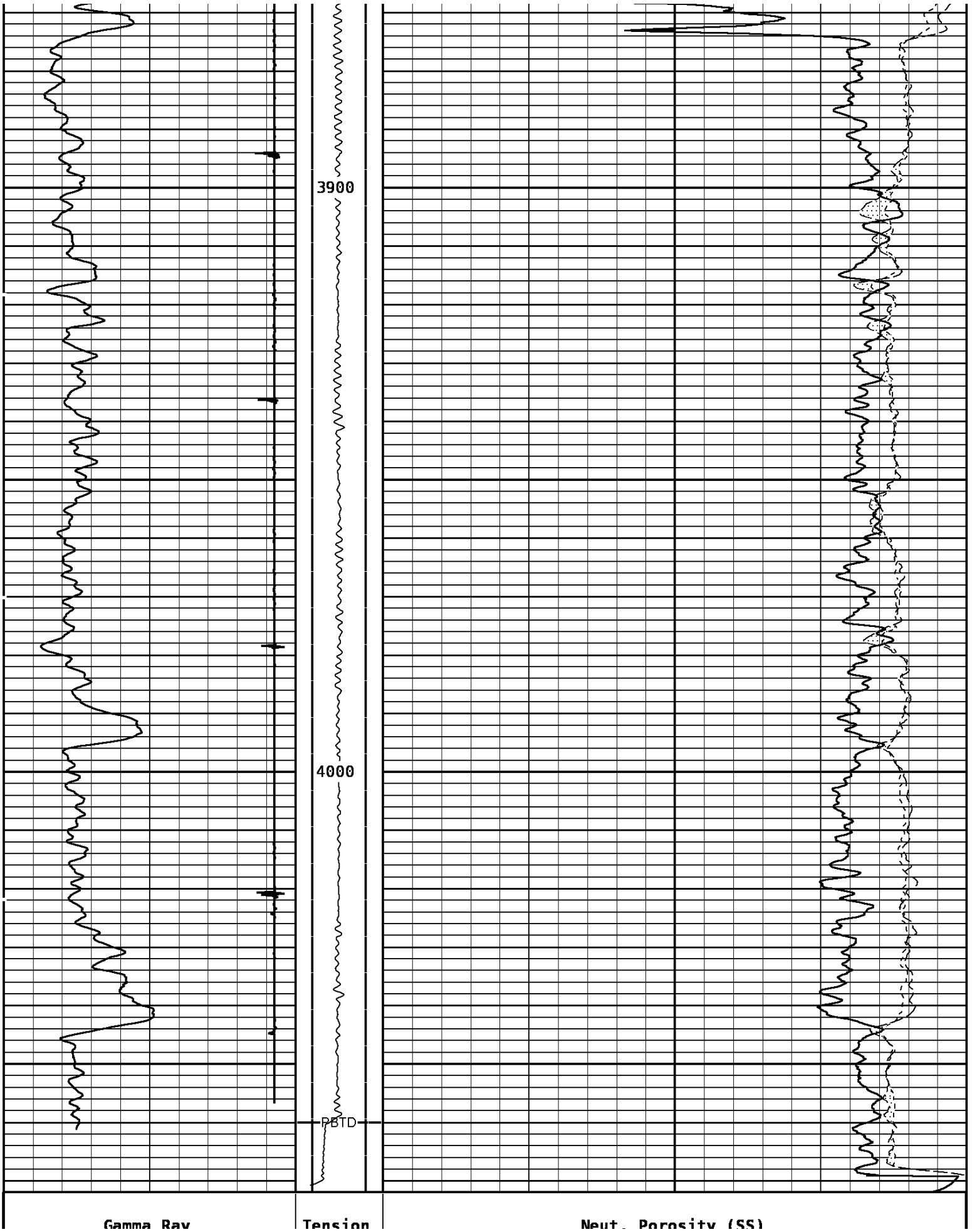




3700

3800





Gamma Ray

Tension

Neut. Porosity (SS)

3900

4000

PBD

0	API	200	0	2000	1.00	Decimal	0.00
Collar Locator						Neutron SS CPS	
-1800	Millivolts	140				400	Counts/Second 0
						Neutron LS CPS	
						250	Counts/Second 0

START DEPTH: **4072.0** DIRECTION: **UP** DATE: **06/24/2014** TIME: **14:18** MODE: **ORIGINAL**

90822067 CNTRF

REPEAT PASS

DEPTH SCALE: **5":100'**

LOGGED VERSION: **2012.07.18.162"**

1 7/16 Adapter Head

Weight 1 LBS
 Length 12 IN
 Max. Diameter 1.44 IN

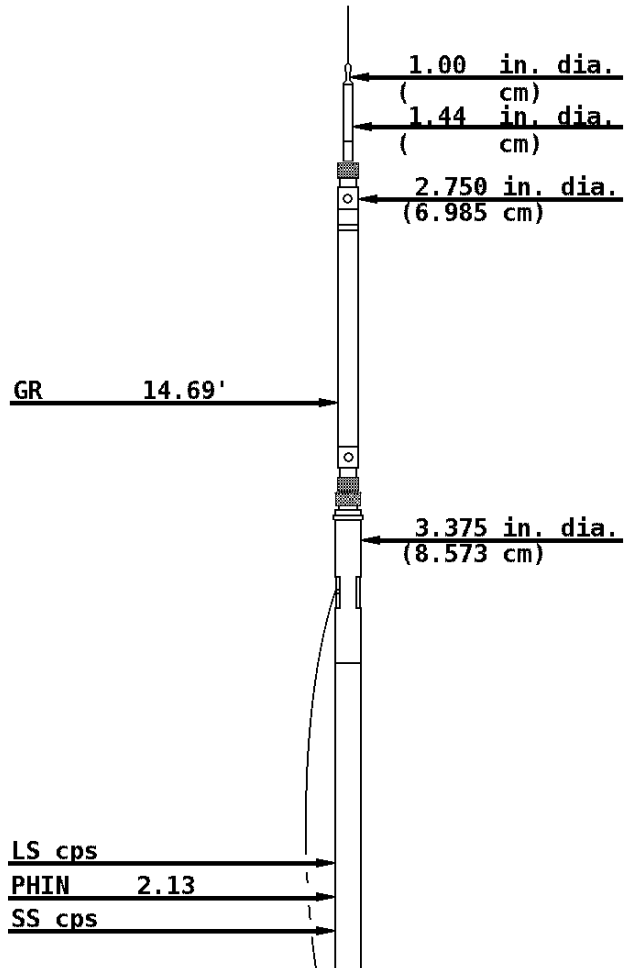
Total Stack Weight 221 LBS in air
 Total Stack Length 16.46'

Slim Hole Gamma Ray

Weight 40 LBS
 Length 3.40'
 Max. Diameter 2.75"

Mandrel Neutron

Weight 140 LBS
 Length 7.35'
 Max. Diameter 3.375"





COMPANY CATAMOUNT ENERGY PARTNERS
WELL CAMPBELL 33-7-4#1H
FIELD IGNACIO BLANCO
COUNTY LA PLATA **STATE** COLORADO



Weatherford®