



Weatherford®

CEMENT BOND LOG

COMPANY CATAMOUNT ENERGY PARTNERS  
WELL CAMPBELL 33-7-4#1H  
FIELD IGNACIO BLANCO  
COUNTY LA PLATA STATE CO

COMPANY CATAMOUNT ENERGY PARTNERS  
WELL CAMPBELL 33-7-4#1H  
FIELD IGNACIO BLANCO  
COUNTY LA PLATA STATE COLORADO

LOCATION:  
989' FSL & 1178' FWL  
API#05-067-09902000  
SEC. 4 TWP. 33N RGE. 7W  
OTHER SERVICES:  
JB-GR 4.688"  
CNT

PERM. DATUM GROUND LEVEL  
LOG MEASURED FROM K.B. 13 FT. ABOVE PERMANENT DATUM  
DRILLING MEASURED FROM KELLY BUSHING

ELEV. 6692'  
ELEV.: K.B. 6705'  
D.F. 6704'  
G.L. 6692'

|                     |             |       |       |            |      |        |    |
|---------------------|-------------|-------|-------|------------|------|--------|----|
| DATE                | 24-JUN-2014 |       |       |            |      |        |    |
| RUN NO.             | ONE         |       |       |            |      |        |    |
| DEPTH DRILLER       | 4265'       |       |       |            |      |        |    |
| DEPTH LOGGER        | 4060'       |       |       |            |      |        |    |
| BIT. LOG INTERVAL   | 4054'       |       |       |            |      |        |    |
| TOP LOG INTERVAL    | SURFACE     |       |       |            |      |        |    |
| OPEN HOLE SIZE      | 7.875"      |       |       |            |      |        |    |
| TYPE FLUID          | WATER       |       |       |            |      |        |    |
| DENS.               | N/A         |       |       |            |      |        |    |
| VISC.               | N/A         |       |       |            |      |        |    |
| MAX. REC. TEMP.     | F N/A       |       |       |            |      |        |    |
| EST. CEMENT TOP     | SEE LOG     |       |       |            |      |        |    |
| TIME WELL READY     | ROA         |       |       |            |      |        |    |
| TIME LOGGER ON BIT. | SEE LOG     |       |       |            |      |        |    |
| EQUIP. NO.          | 14247       |       |       |            |      |        |    |
| LOCATION            | FARMINGTON  |       |       |            |      |        |    |
| RECORDED BY         | C. CALIENDO |       |       |            |      |        |    |
| WITNESSED BY        | L. DAVIS    |       |       |            |      |        |    |
| BOREHOLE RECORD     |             |       |       |            |      |        |    |
| RUN NO.             | BIT         | FROM  | TO    | SIZE       | WGT. | FROM   | TO |
| TUBING RECORD       |             |       |       |            |      |        |    |
| CASING RECORD       | SIZE        | WT/FT | GRADE | TYPE JOINT | TOP  | BOTTOM |    |
| SURFACE STRING      | 8-5/8"      | 24    | J55   | STC        | SURF | 517'   |    |
| PROT. STRING        |             |       |       |            |      |        |    |
| PROD. STRING        | 5.5"        | 17    | J55   | LTC        | SURF | 4102'  |    |
| LINER               |             |       |       |            |      |        |    |

All interpretations of log data are opinions based on inferences from electrical or other measurements. We do not guarantee the accuracy or correctness of any interpretation or recommendation and we shall not be liable or responsible for any loss, cost, damages or expenses incurred or sustained by anyone resulting from any interpretation or recommendation made by any of our employees or agents.

REMARKS Rig: EXPRESS (14247) Service Order # 90822067  
LOG WAS RAN WITH A 13' K.B. BHT N/A °F

Prints: 4

THANK YOU FOR CHOOSING WEATHERFORD WIRELINE SERVICES FARMINGTON, NM (505)564-9131

| EQUIPMENT DATA   |         |           |          |       |
|------------------|---------|-----------|----------|-------|
| Bit Size         | Run No. | Tool Type | Tool No. | Other |
| 7.875"           | ONE     | STBA      | 237      |       |
| NEW DRILL        | ONE     | CTBA      | 236      |       |
| Surface Pressure |         |           |          |       |
| Shut In          | Flowing |           |          |       |
|                  |         |           |          |       |
|                  |         |           |          |       |
|                  |         |           |          |       |
|                  |         |           |          |       |

|  |  |  |  |  |  |
|--|--|--|--|--|--|
|  |  |  |  |  |  |
|  |  |  |  |  |  |
|  |  |  |  |  |  |
|  |  |  |  |  |  |

DEPTH SCALE: 5":100'

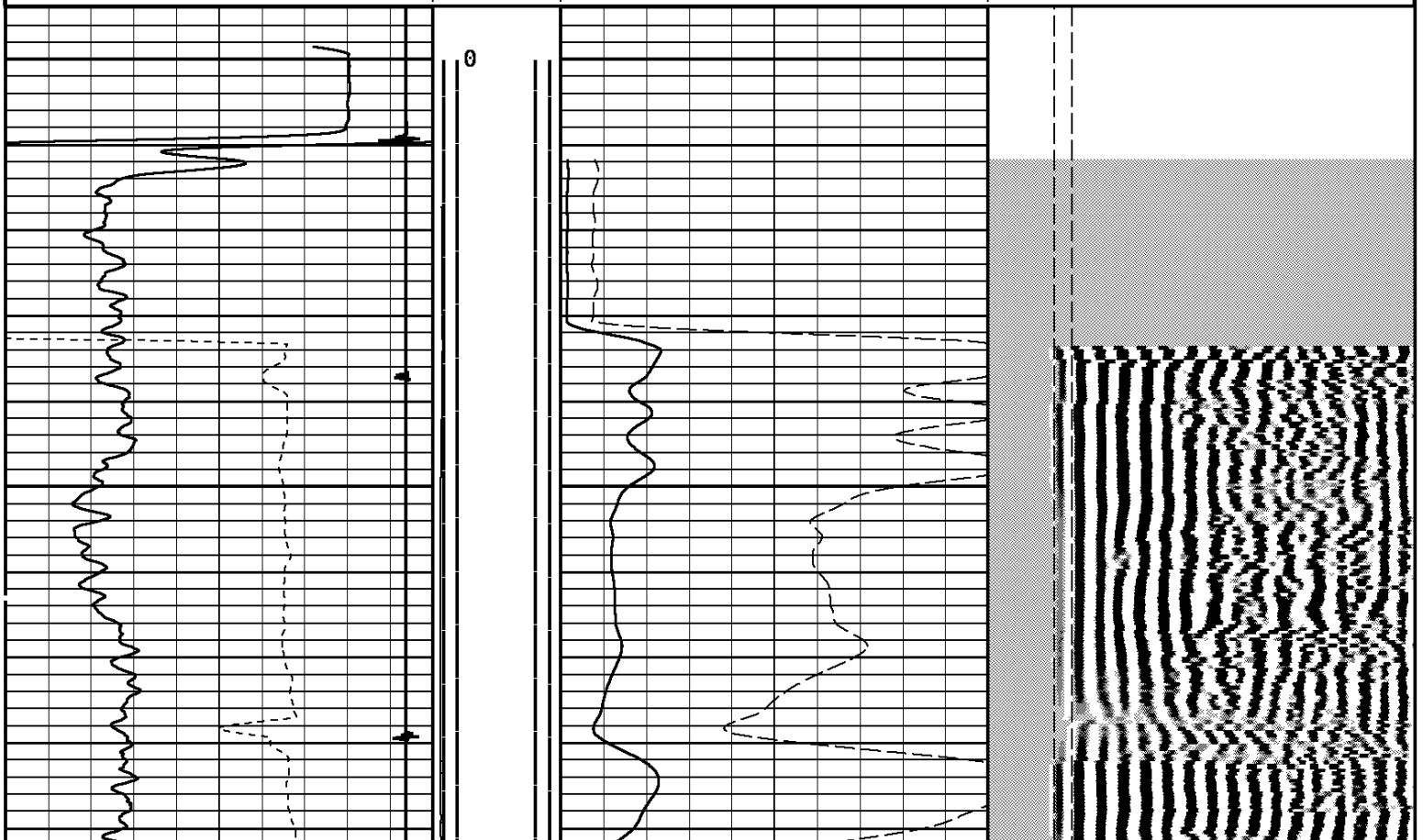
PROCESSED VERSION: 2012.07.18.162"

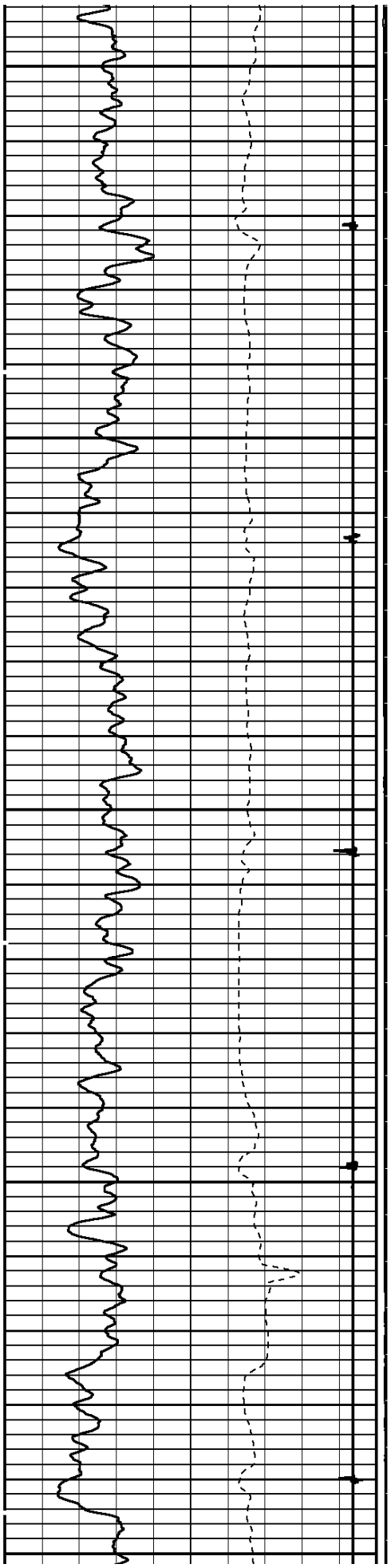
**MAIN PASS**

90822067 CBLMF

FINISH DEPTH: 17.2 Feet DIRECTION: UP DATE: 06/24/2014 TIME: 13:32 MODE: ORIGINAL  
 RECOMPUTED DATE: 06/24/2014 TIME: 13:32

|                        |              |                |                       |              |                             |
|------------------------|--------------|----------------|-----------------------|--------------|-----------------------------|
| <b>Collar Locator</b>  |              |                | <b>FREE PIPE GATE</b> |              |                             |
| -1800                  | Millivolts   | 120            | 200                   | Microseconds | 1200                        |
| <b>Gamma Ray</b>       |              |                | <b>FREE PIPE GATE</b> |              |                             |
| 0                      | API          | 200            | 200                   | Microseconds | 1200                        |
| <b>TRAVEL TIME 3FT</b> |              | <b>Tension</b> | <b>AMPLITUDE 3FT</b>  |              | <b>VARIABLE DENSITY 5FT</b> |
| 310                    | Microseconds | 210            | 0                     | 3000         | 0                           |
|                        |              |                | 0                     | Millivolts   | 100                         |
|                        |              |                | 200                   | Microseconds | 1200                        |

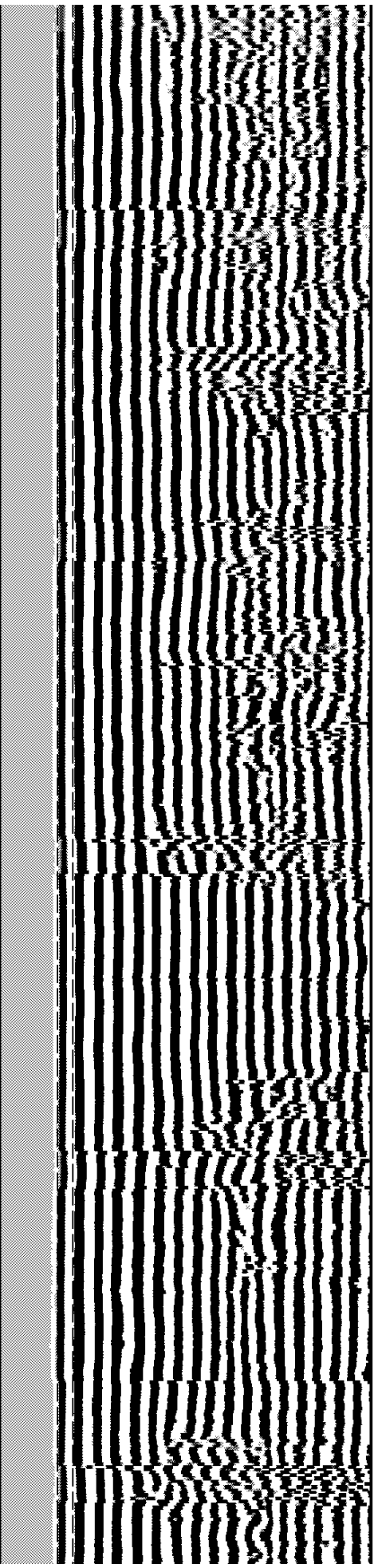
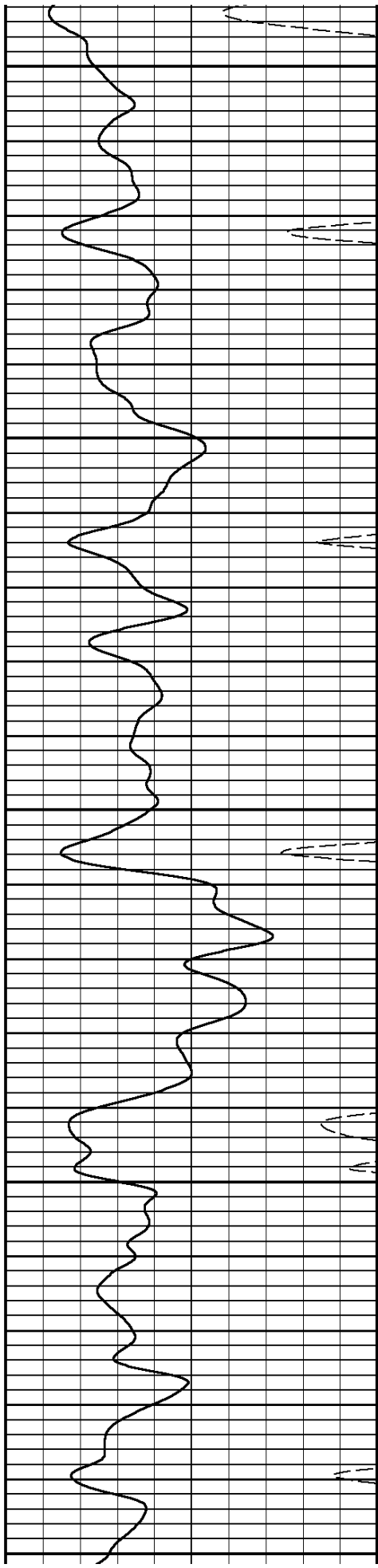


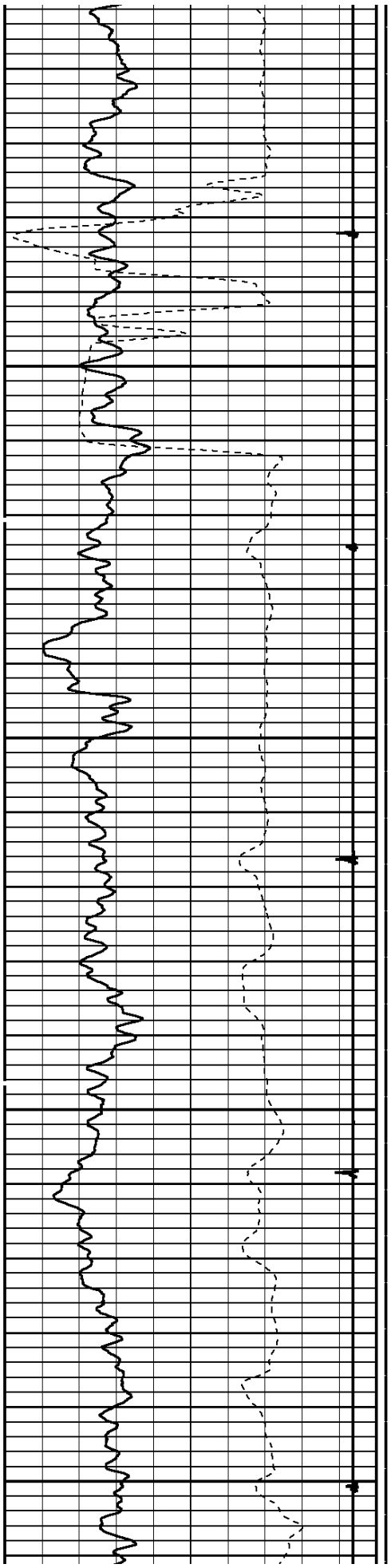


100

200

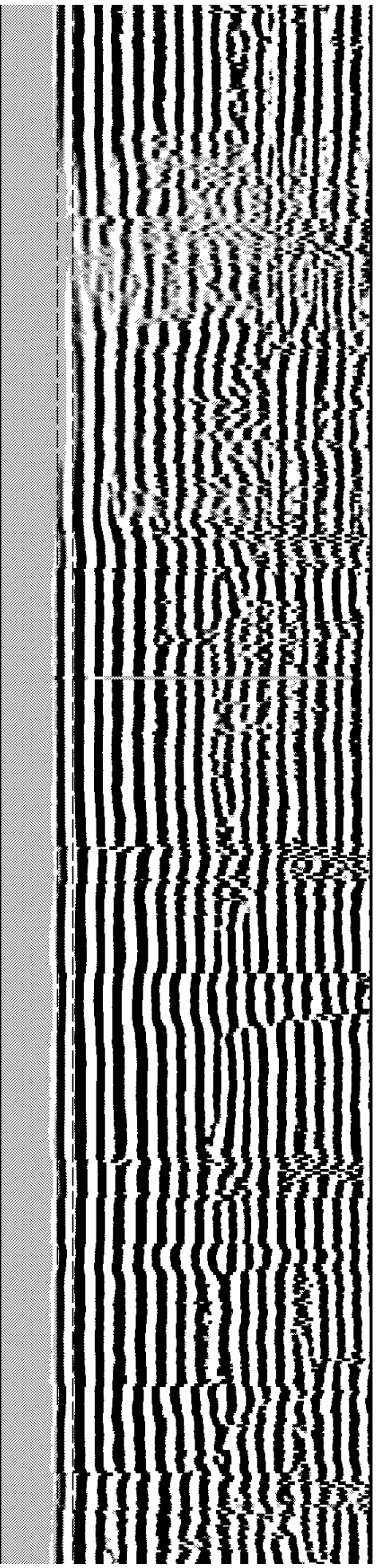
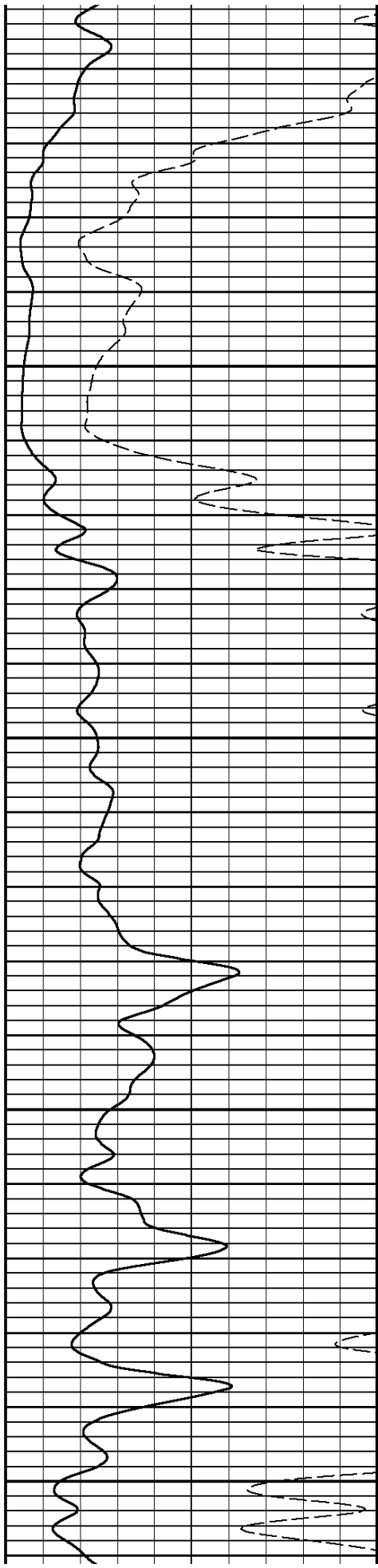
300

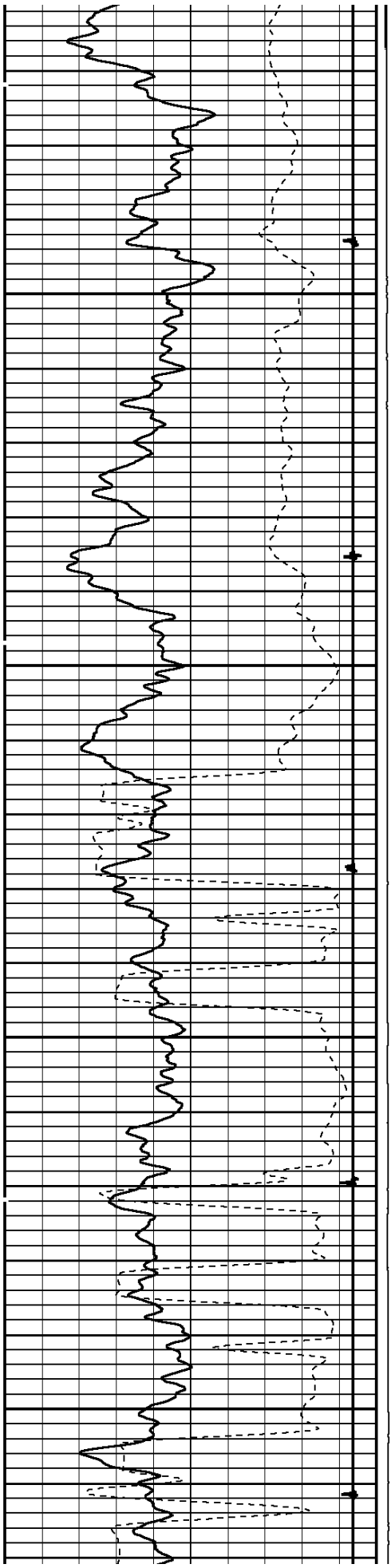




400

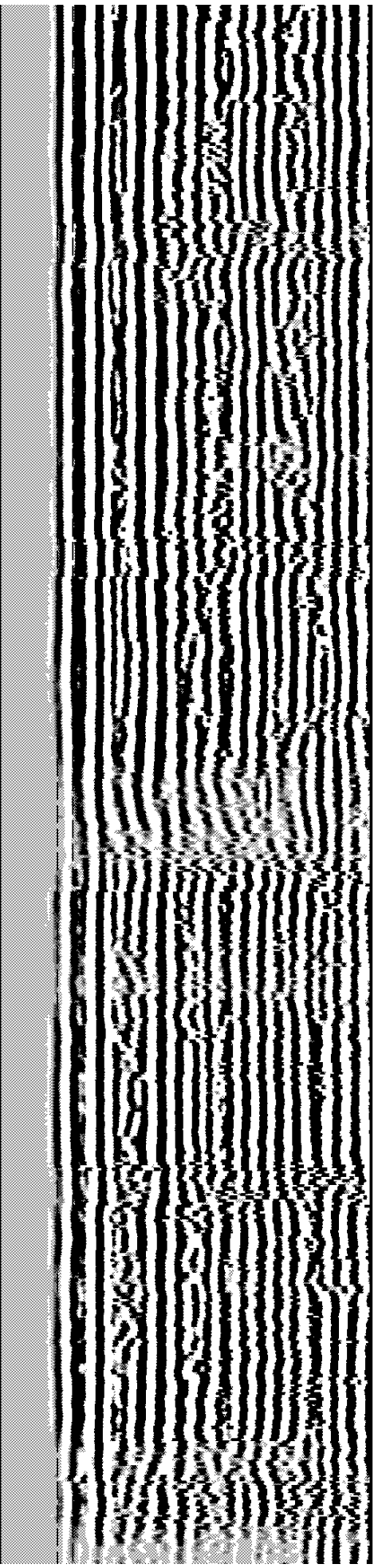
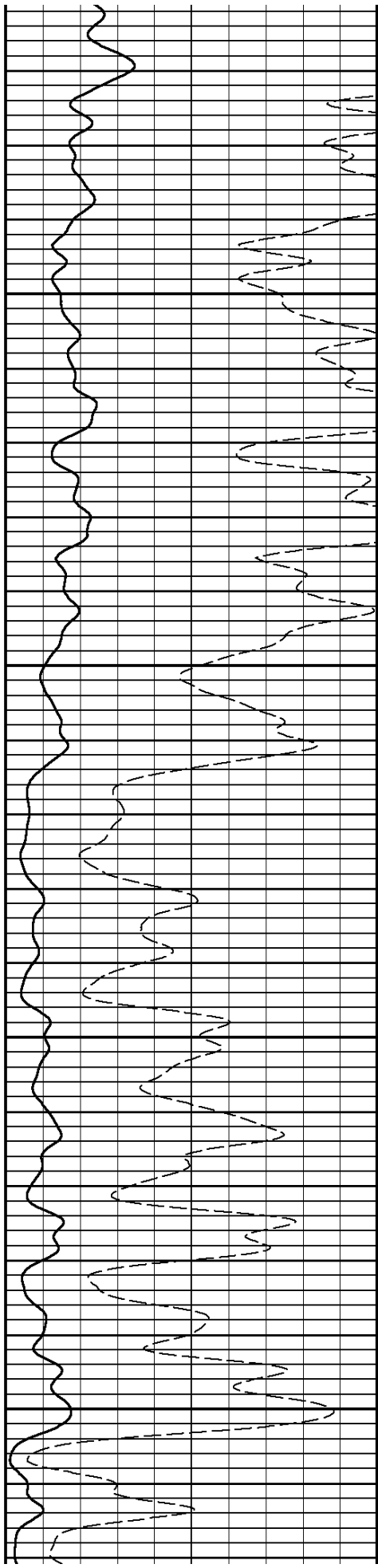
500

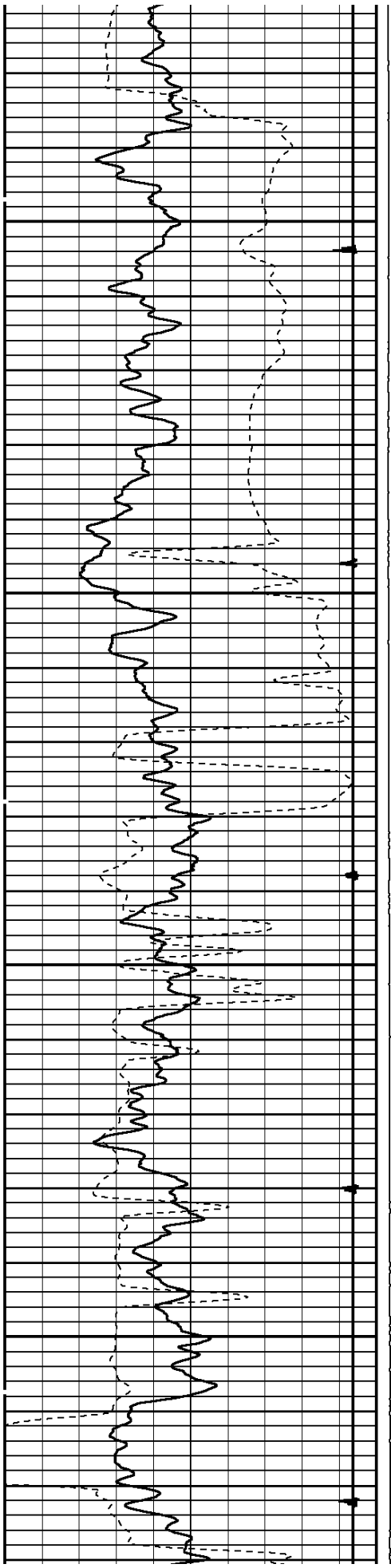




600

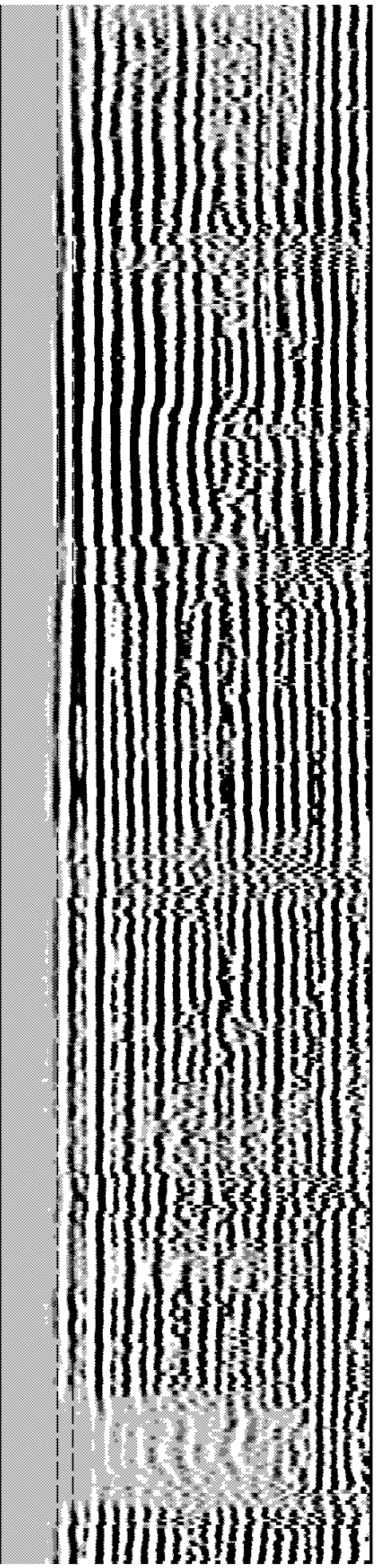
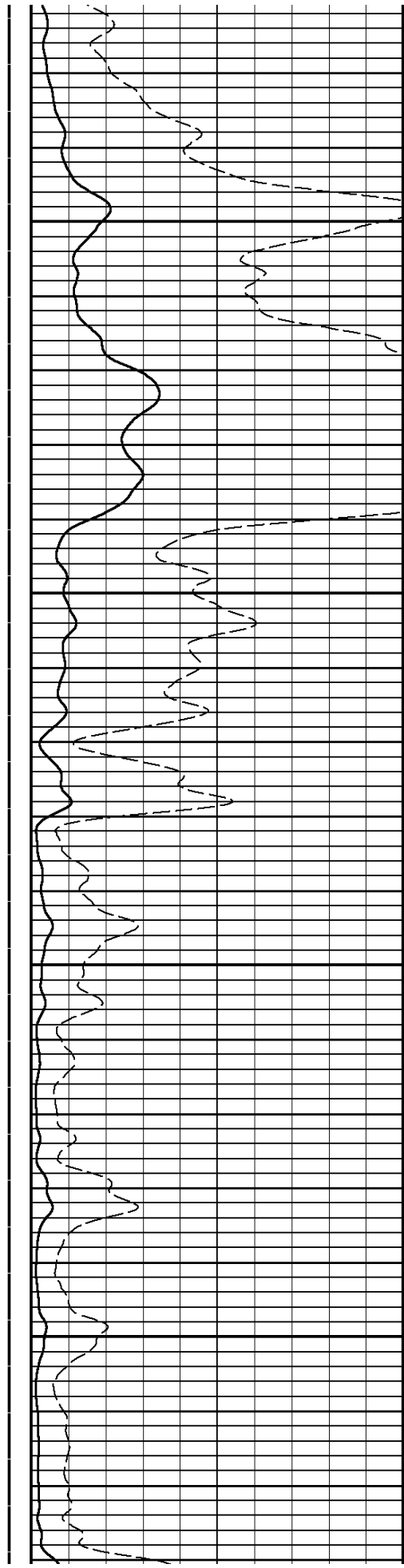
700

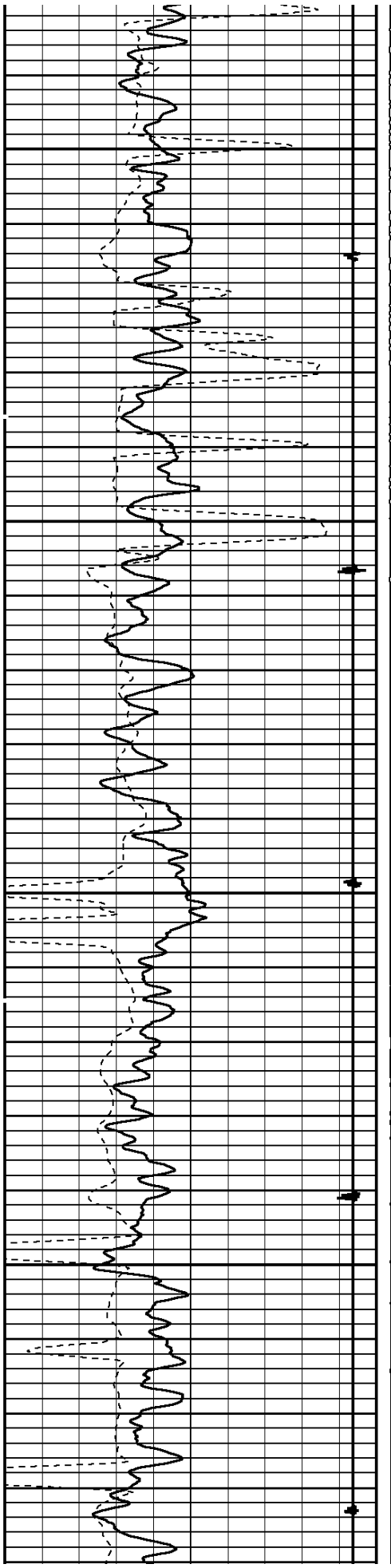




800

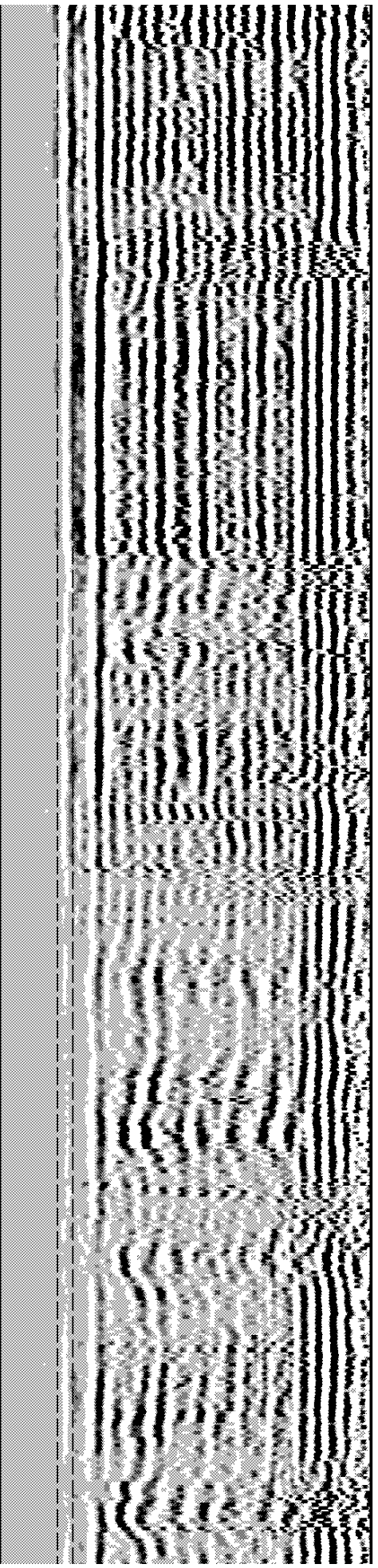
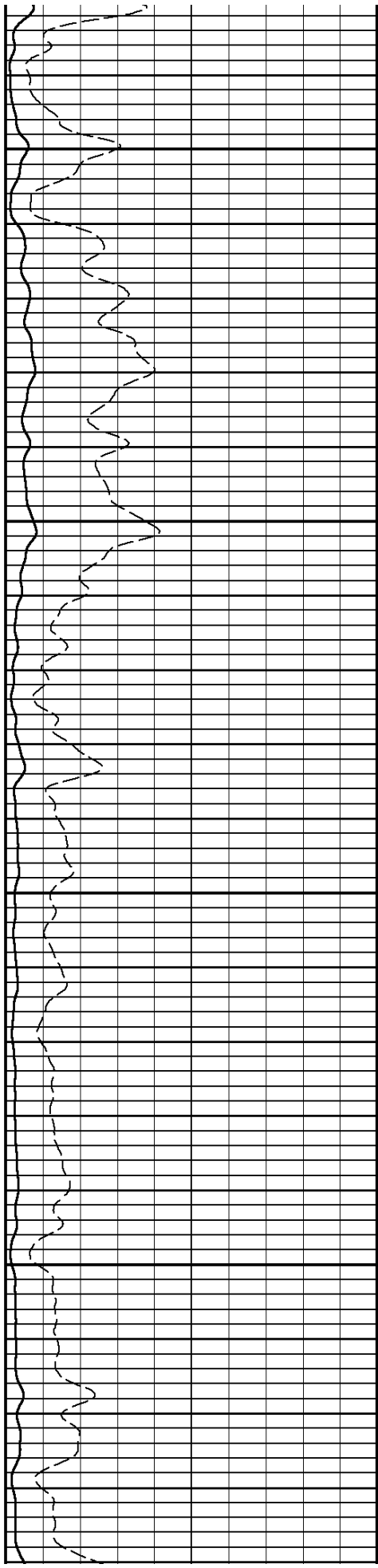
900

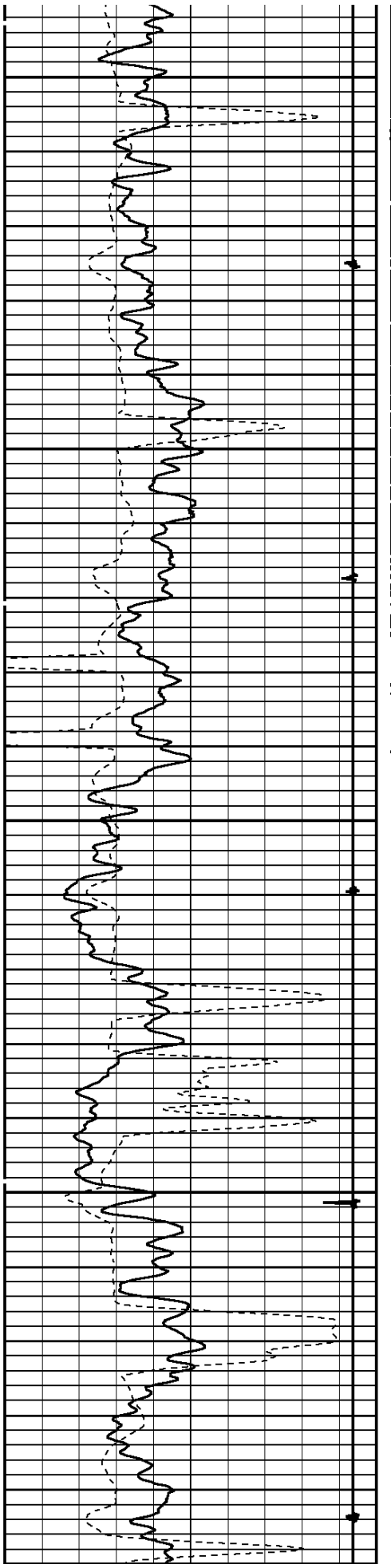




1000

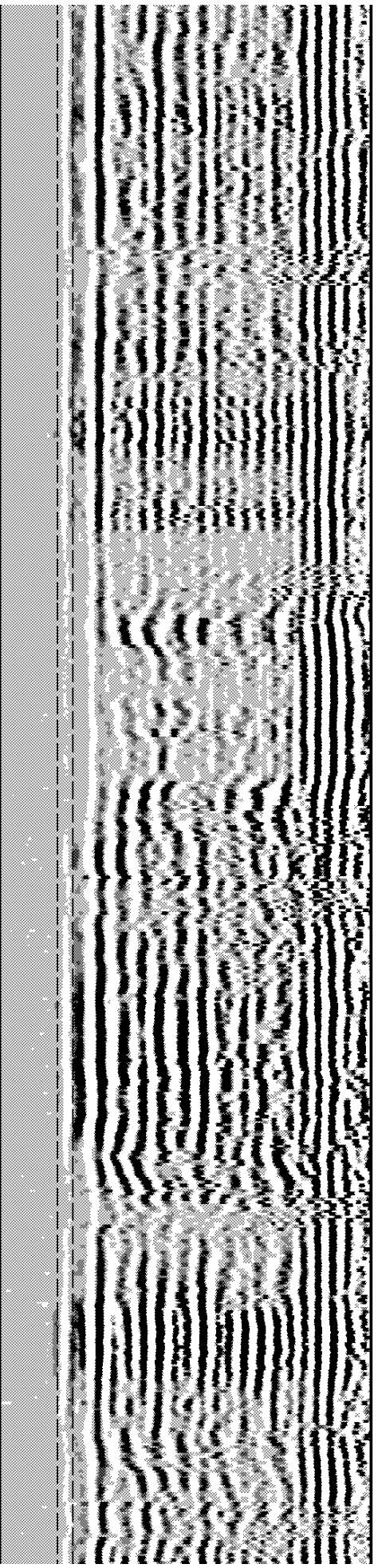
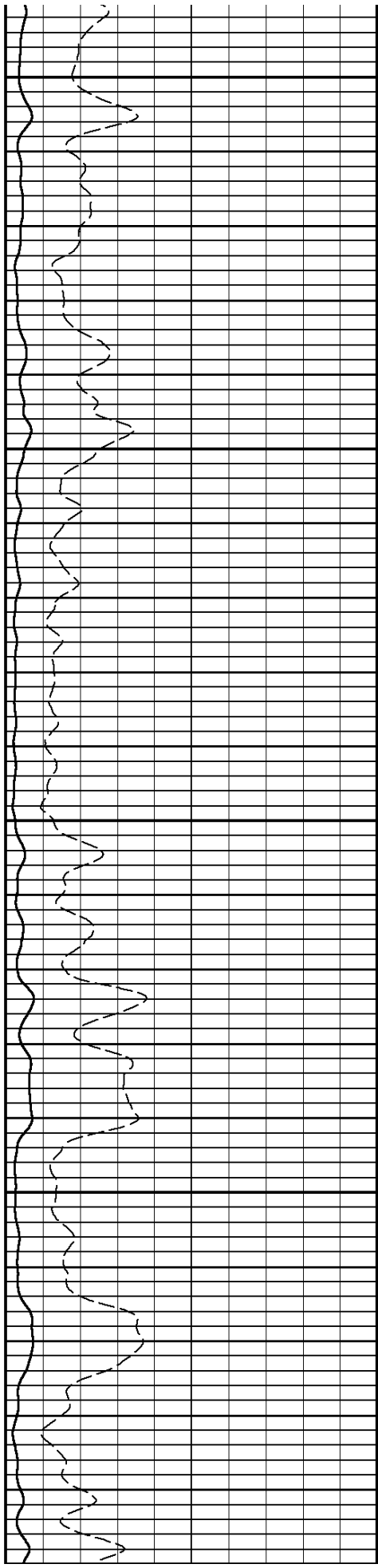
1100

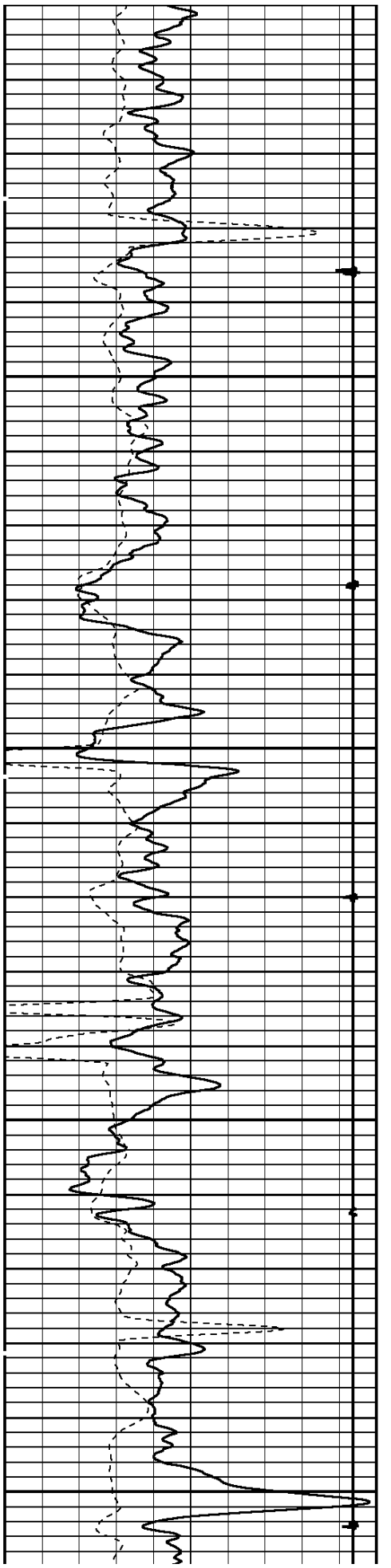




1200

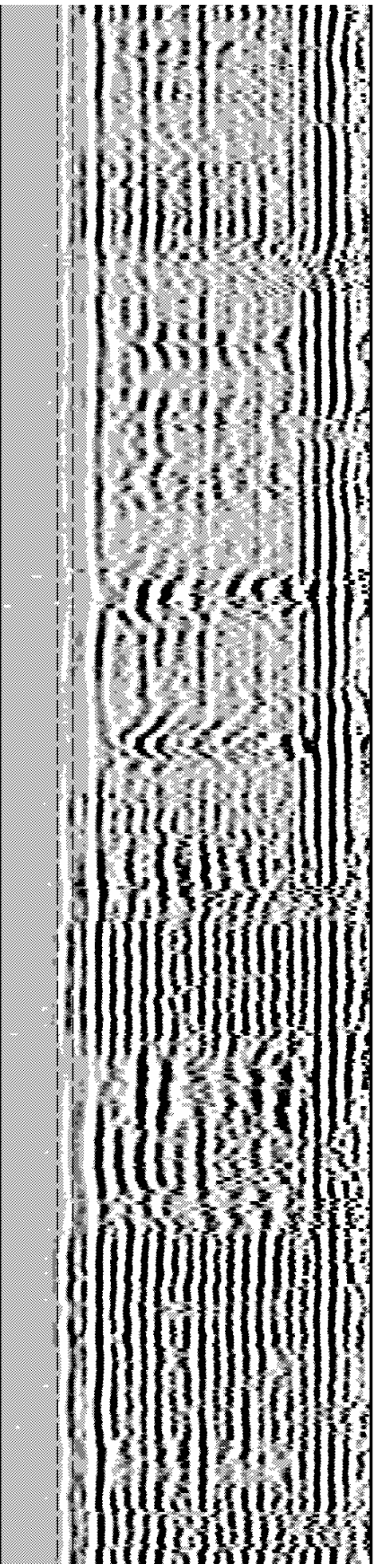
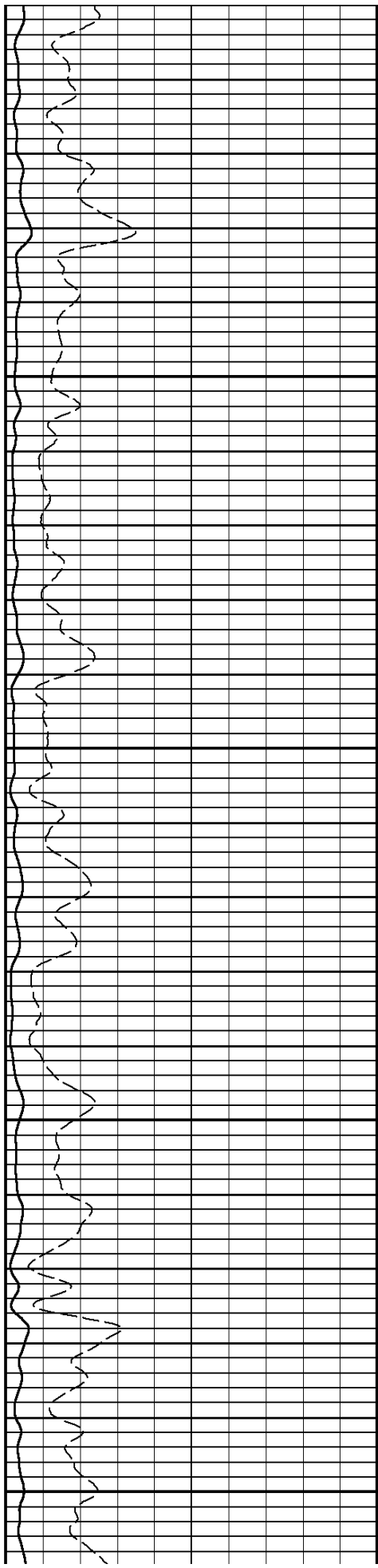
1300

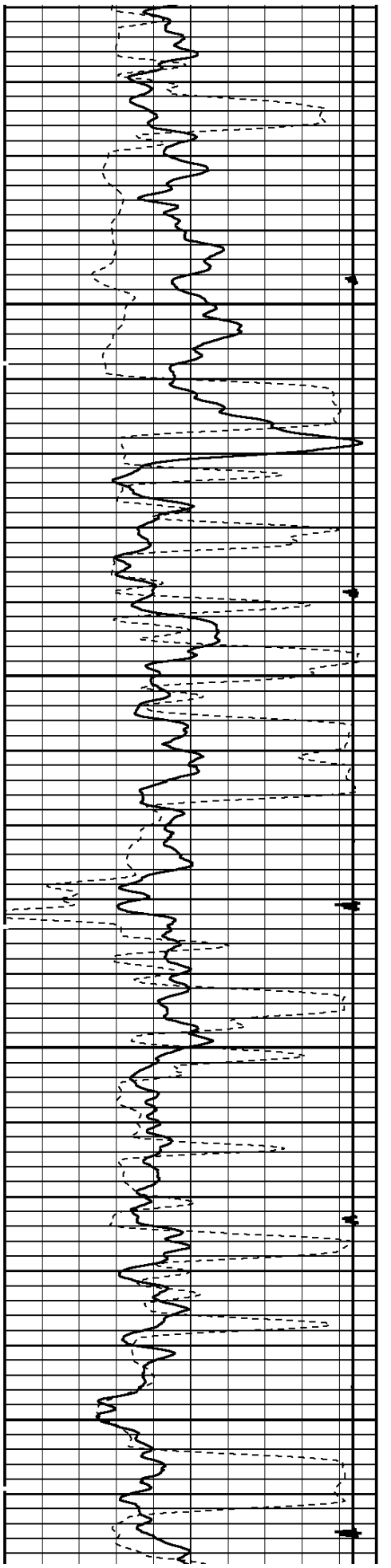




1400

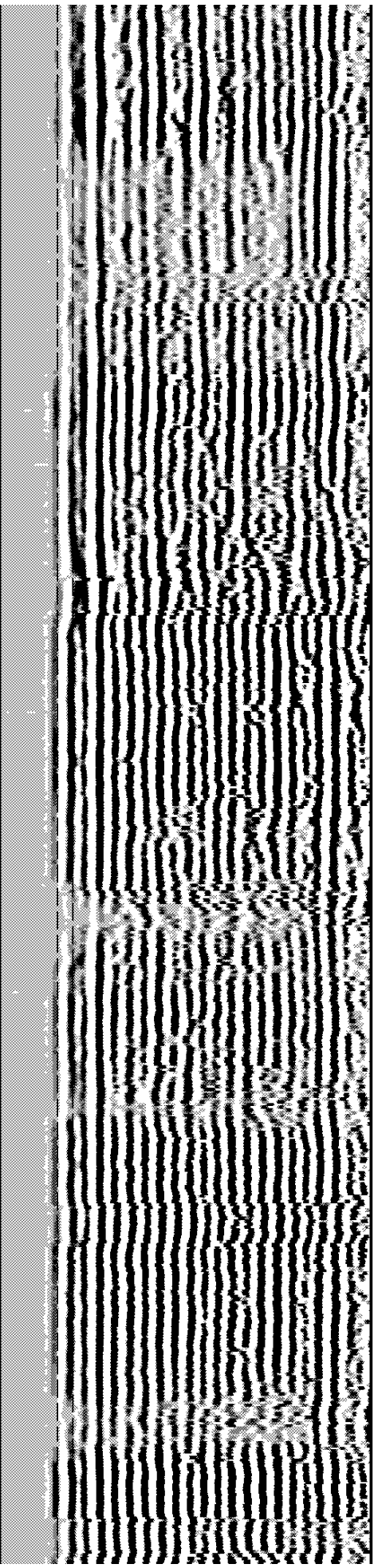
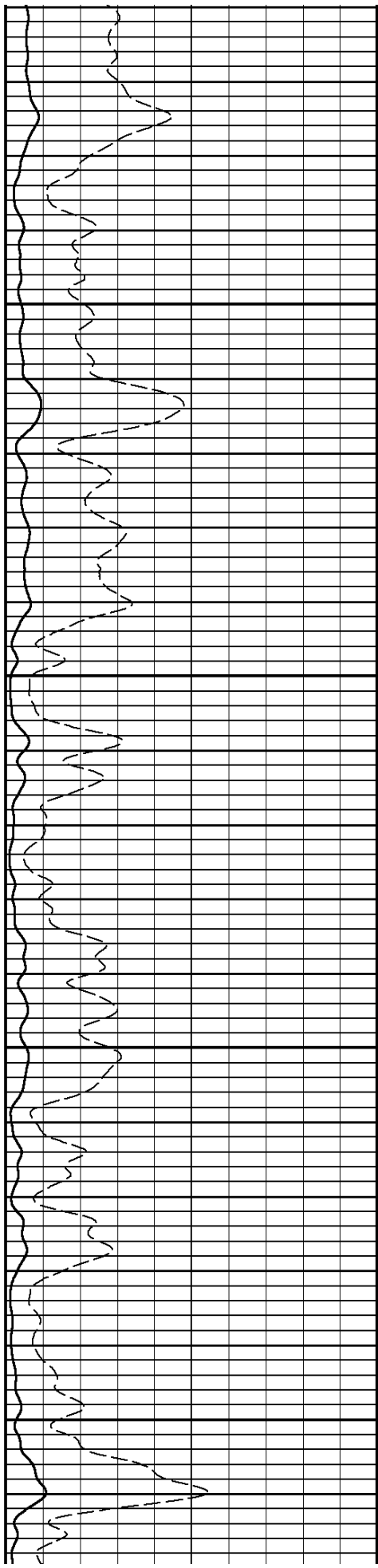
1500

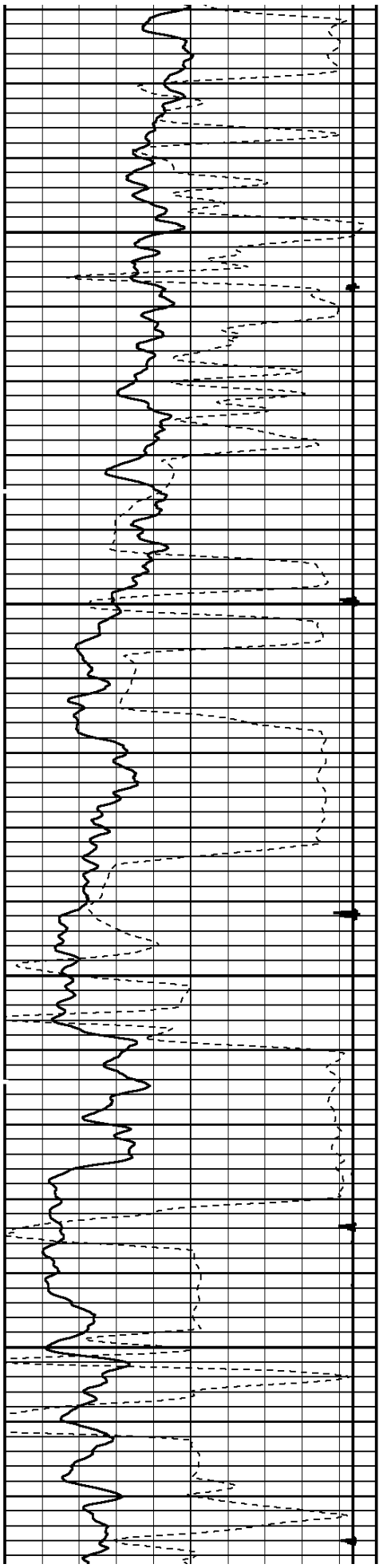




1600

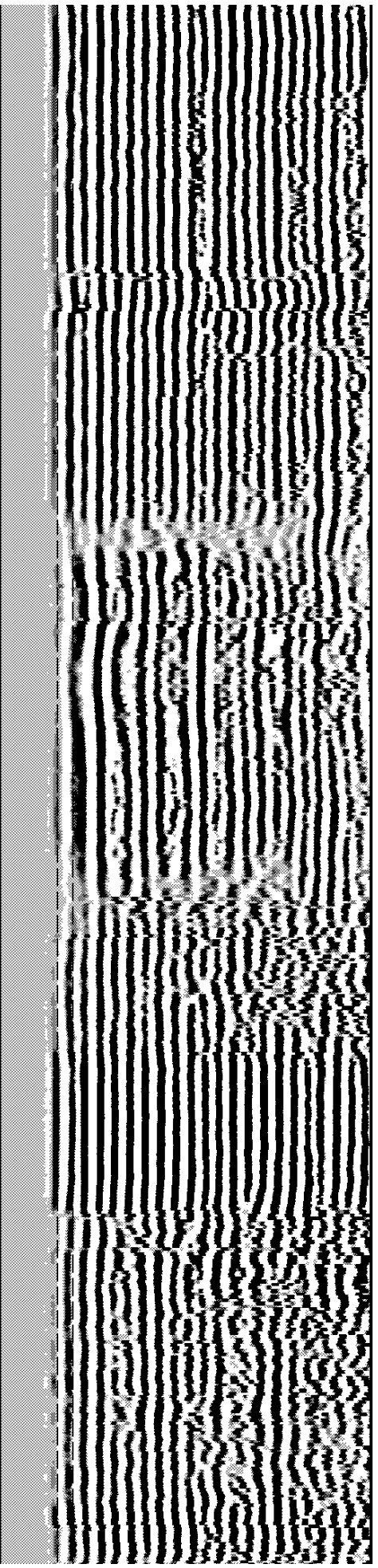
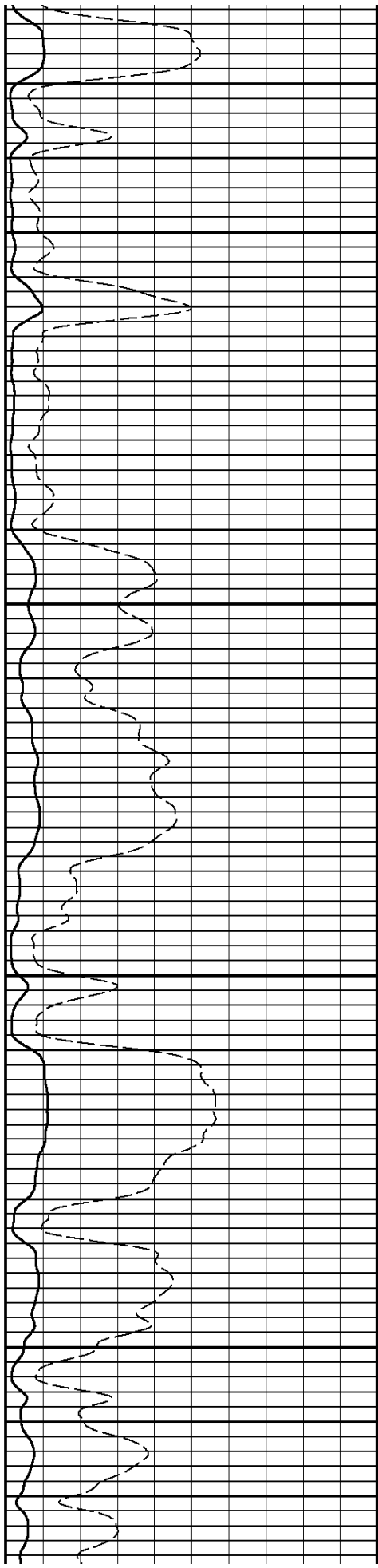
1700

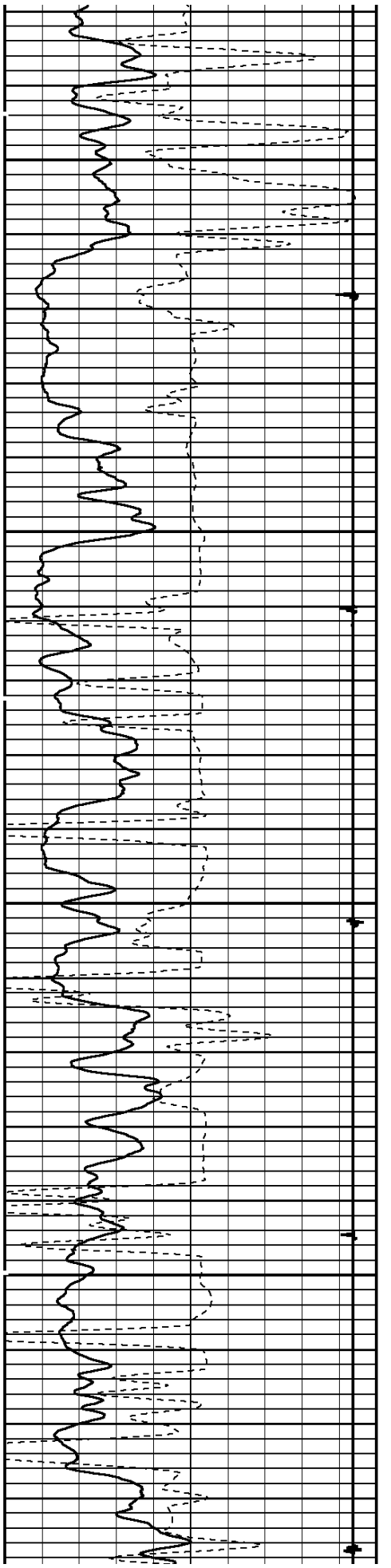




1800

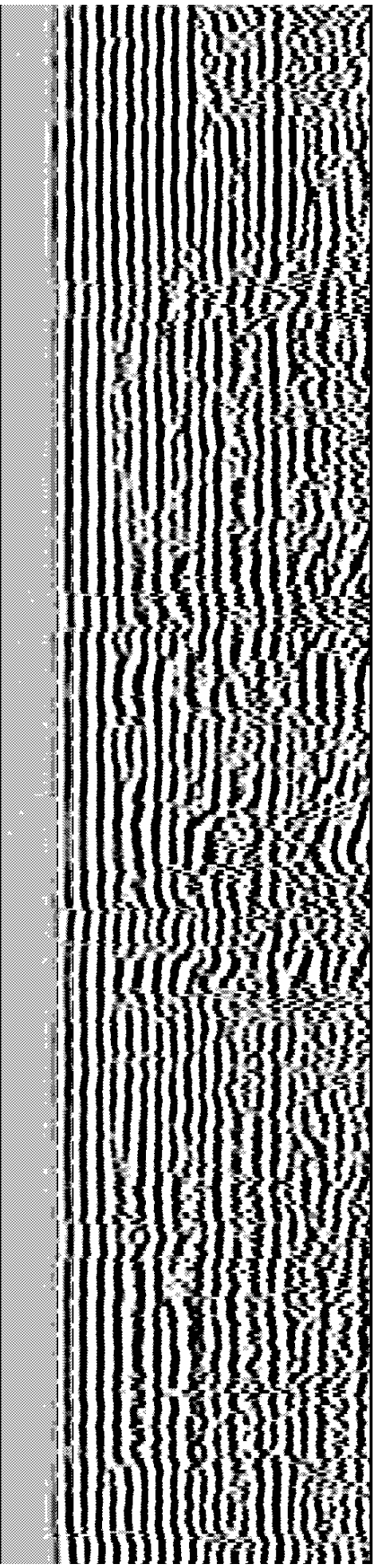
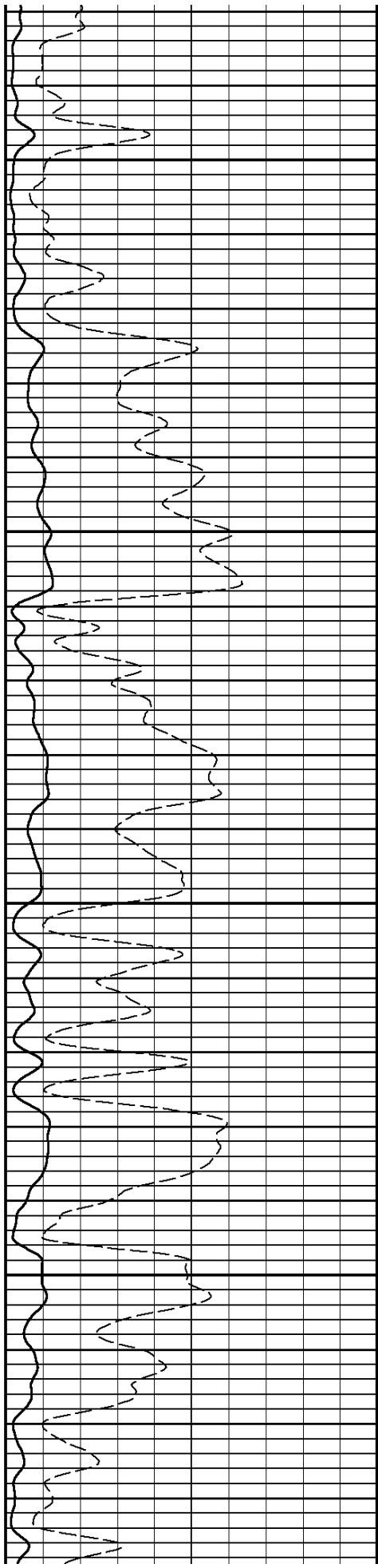
1900

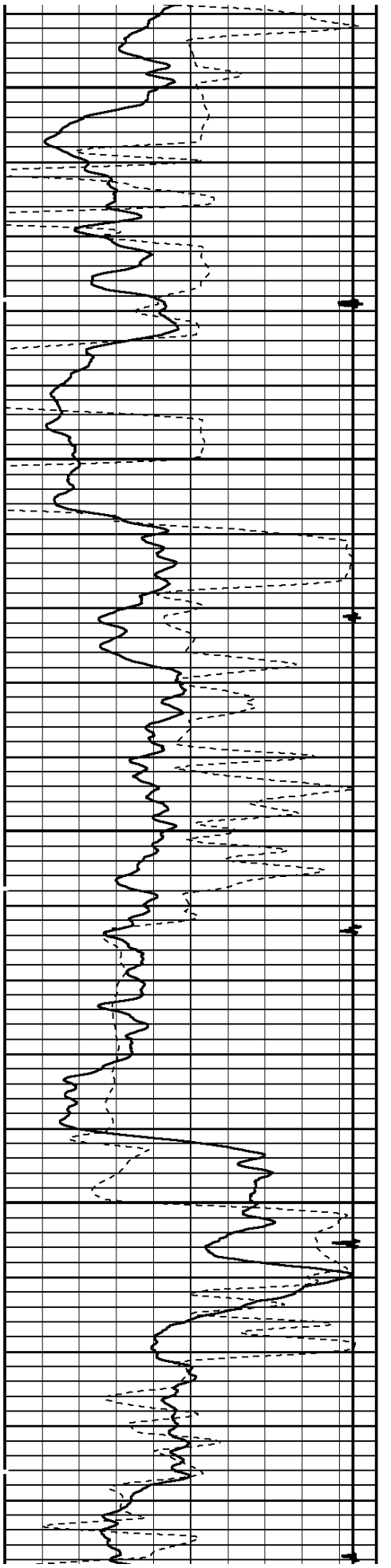




2000

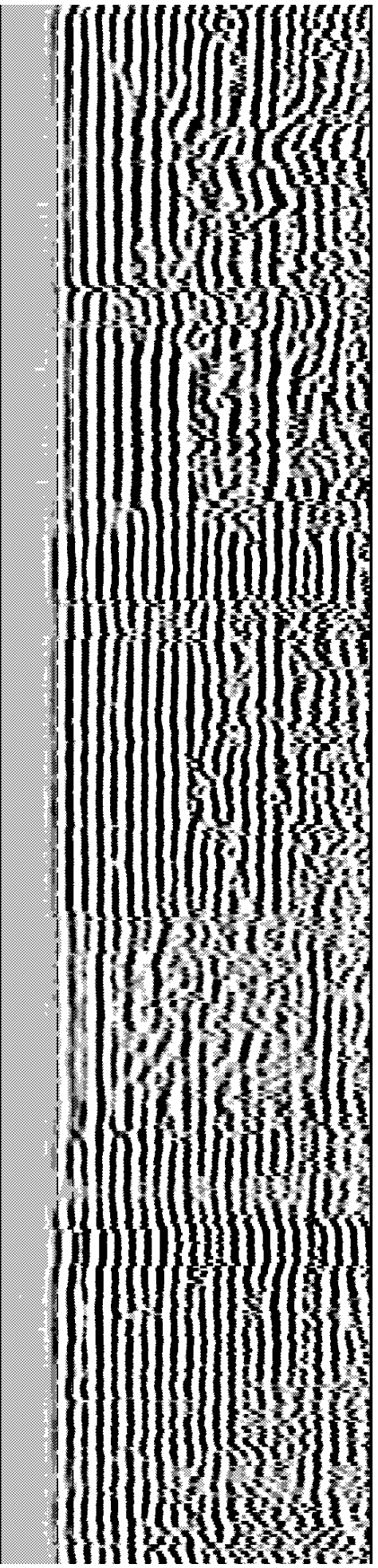
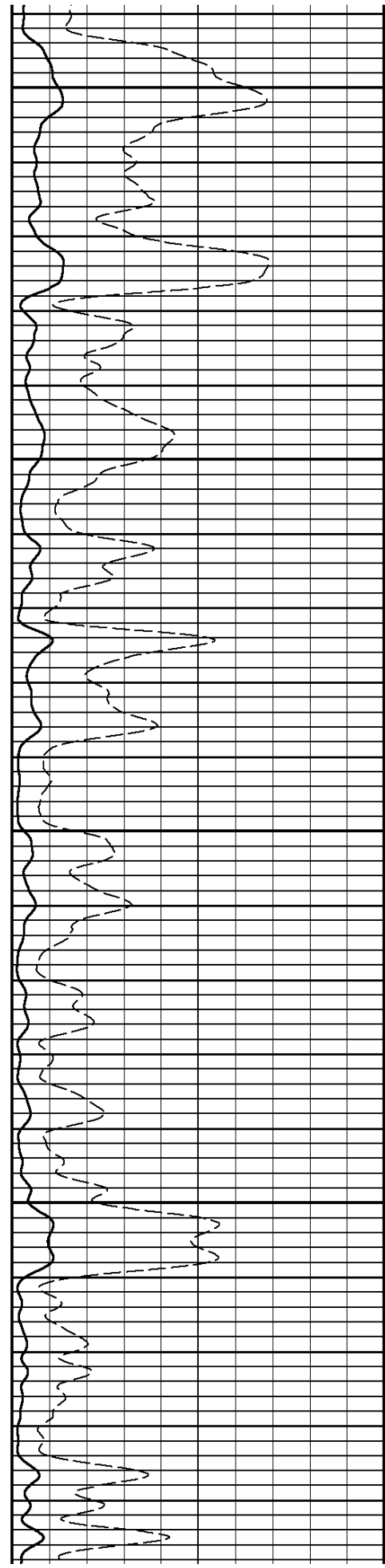
2100

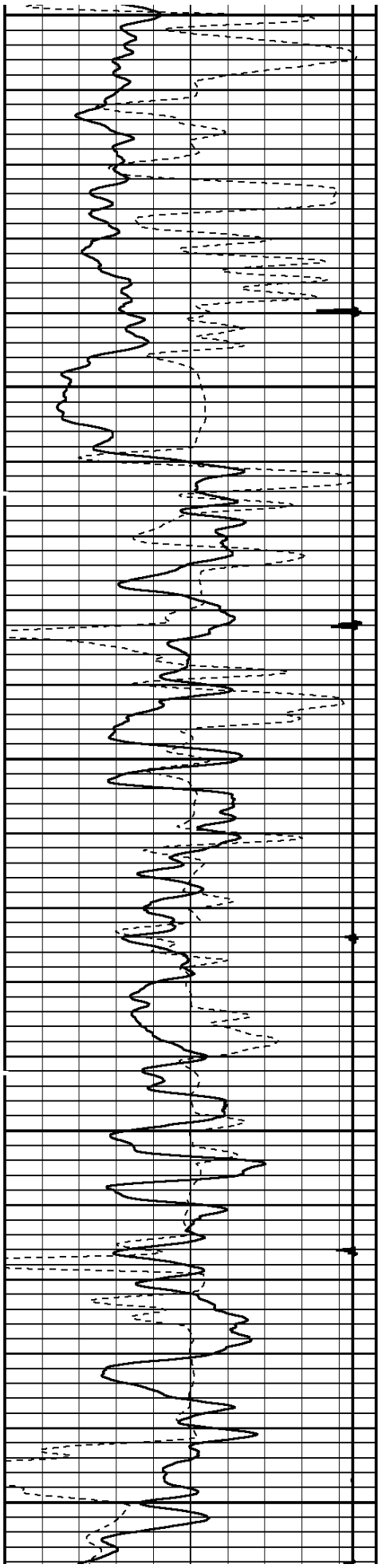




2200

2300

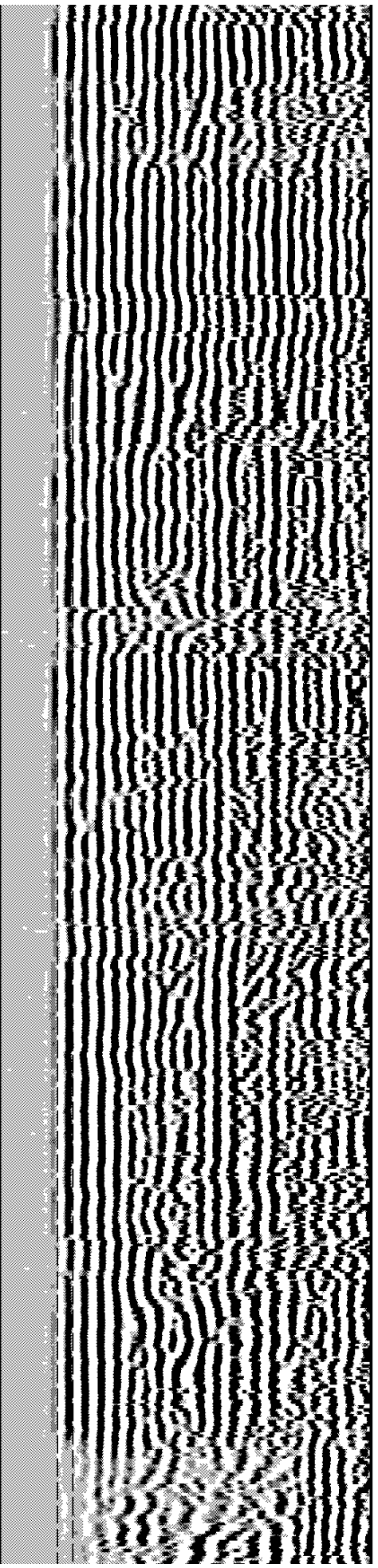
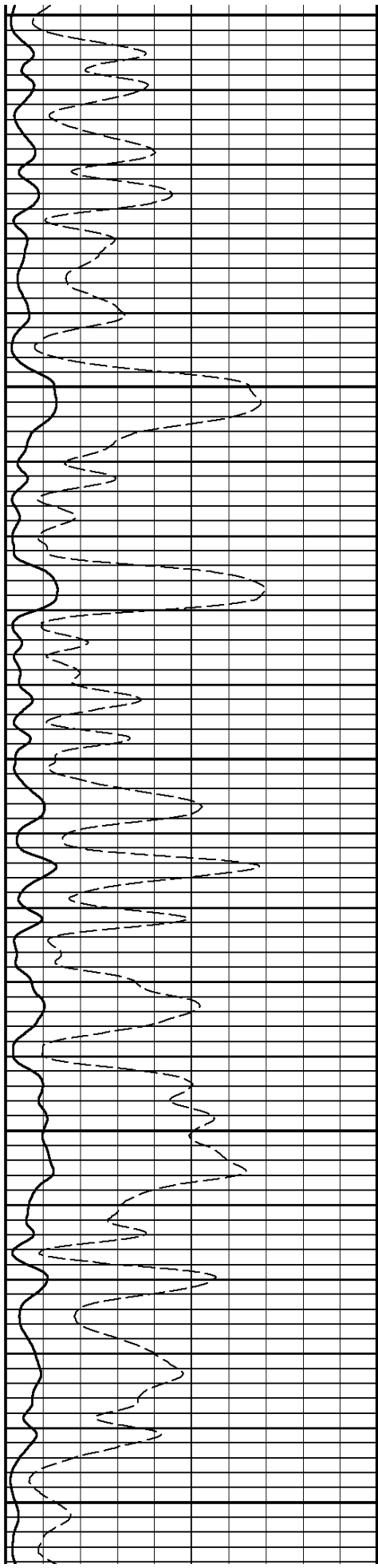


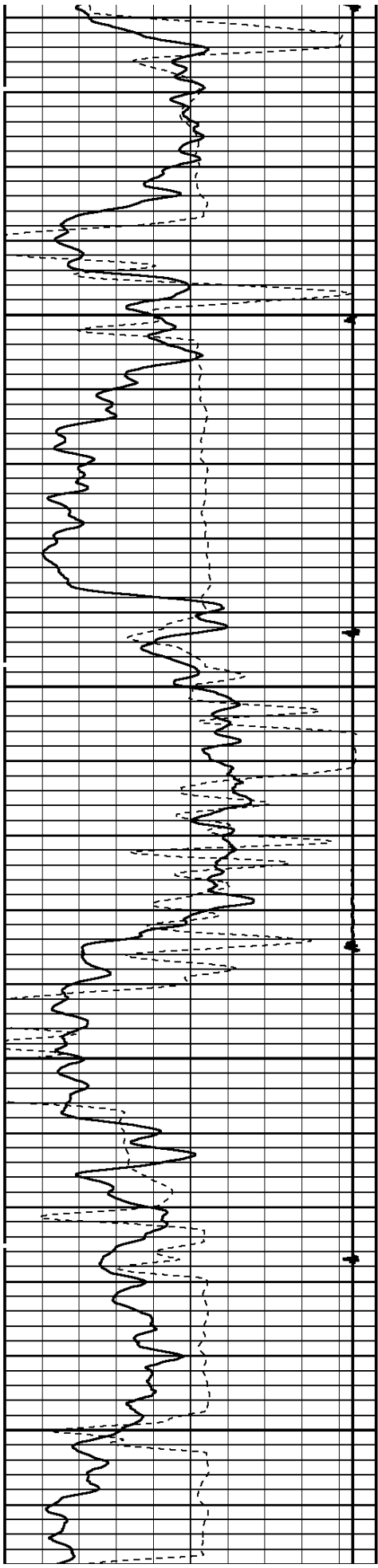


2400

2500

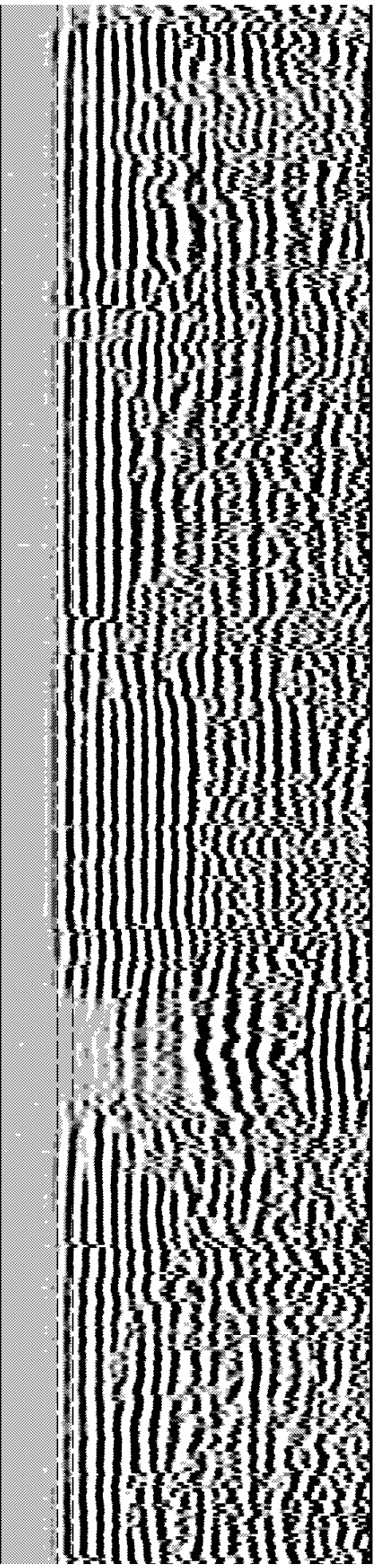
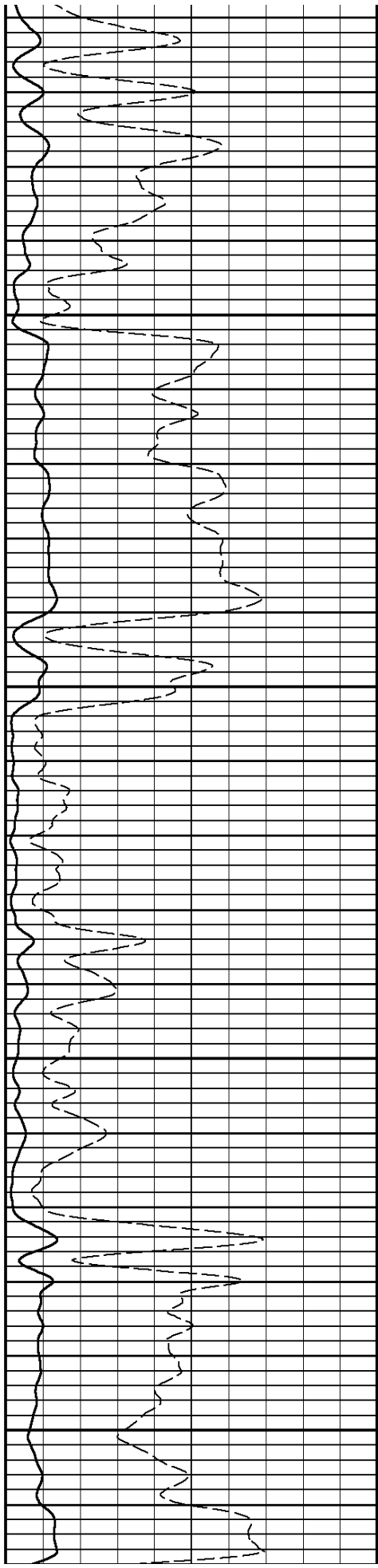
2600

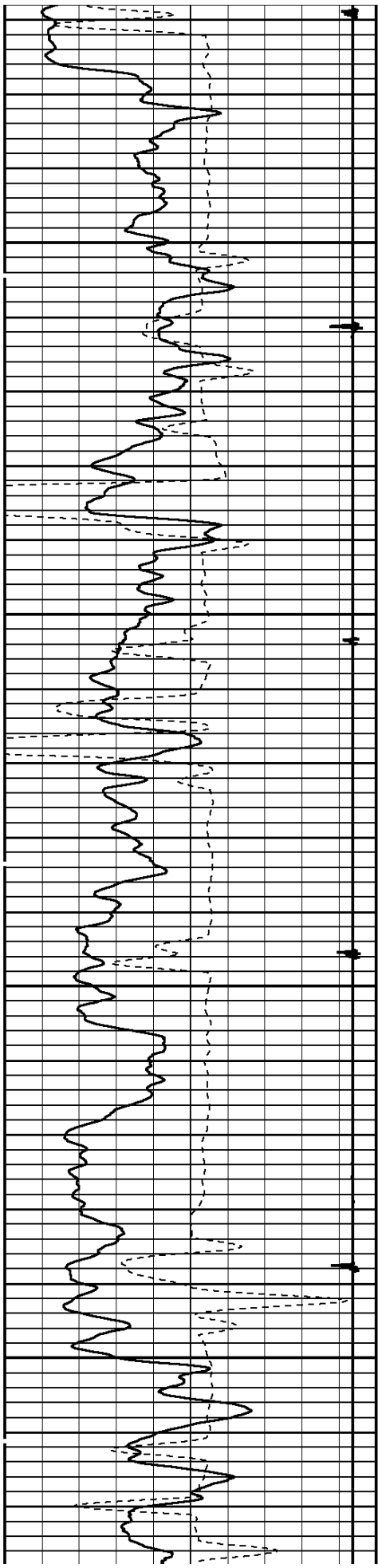




2700

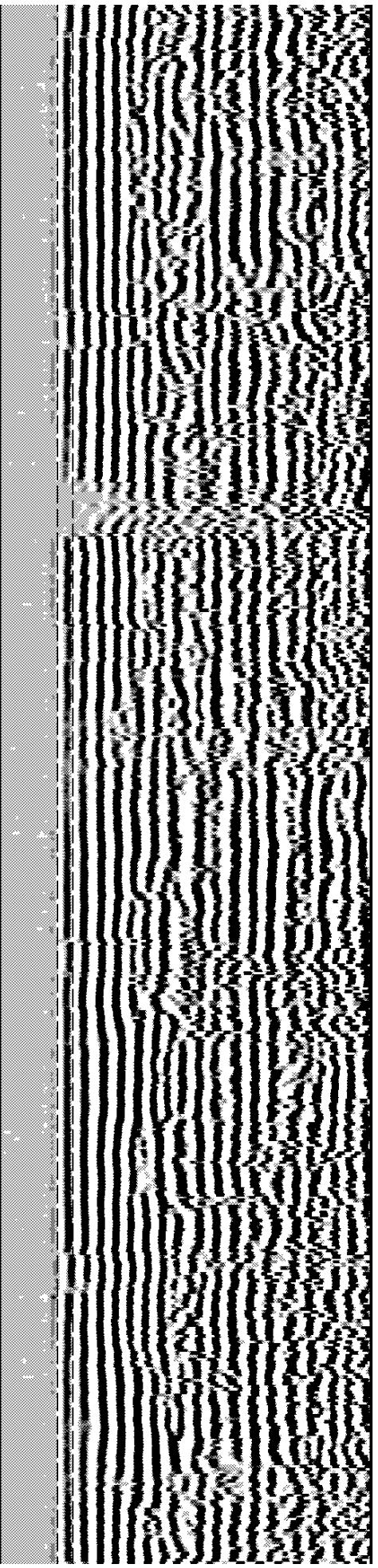
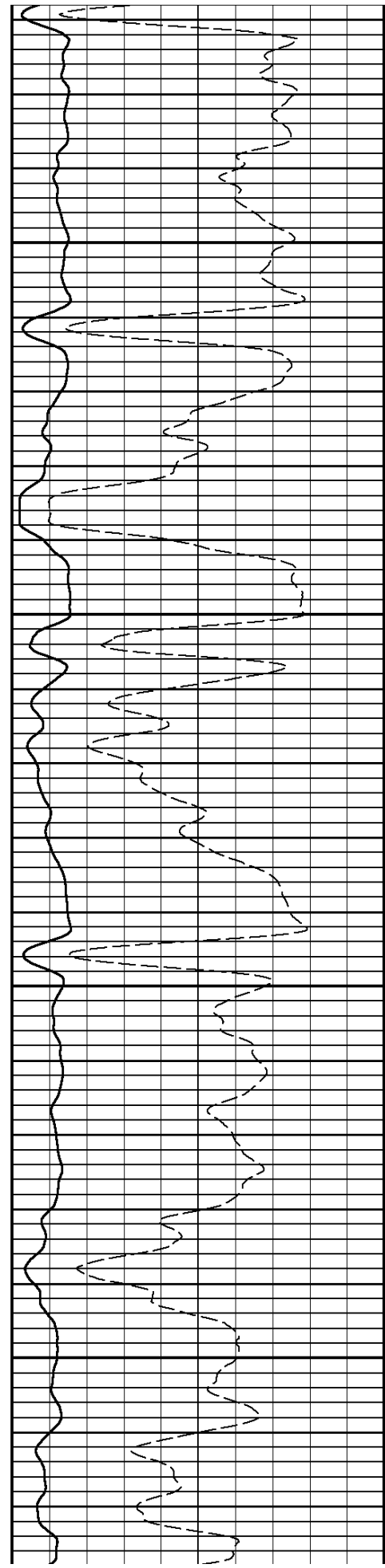
2800

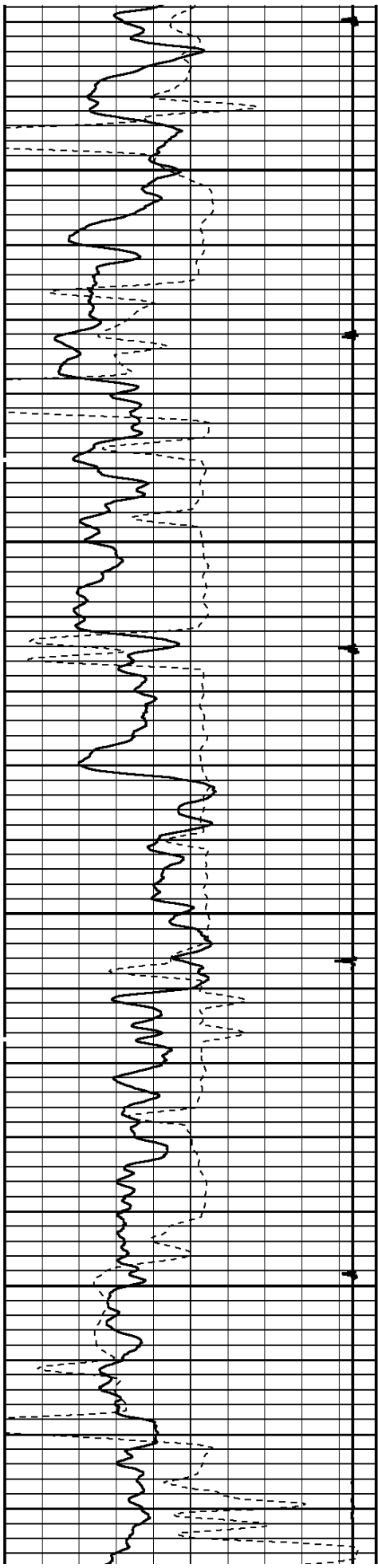




2900

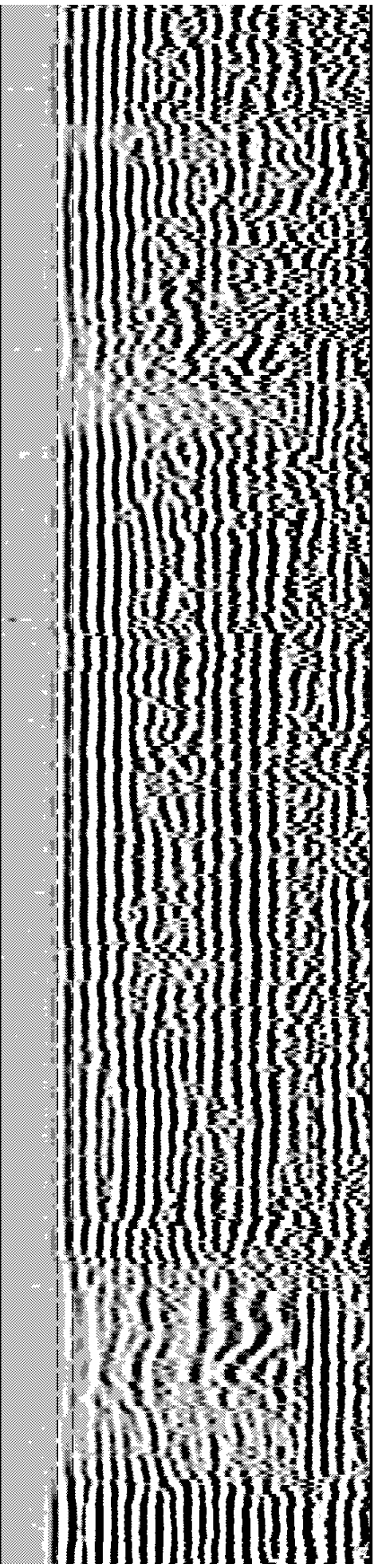
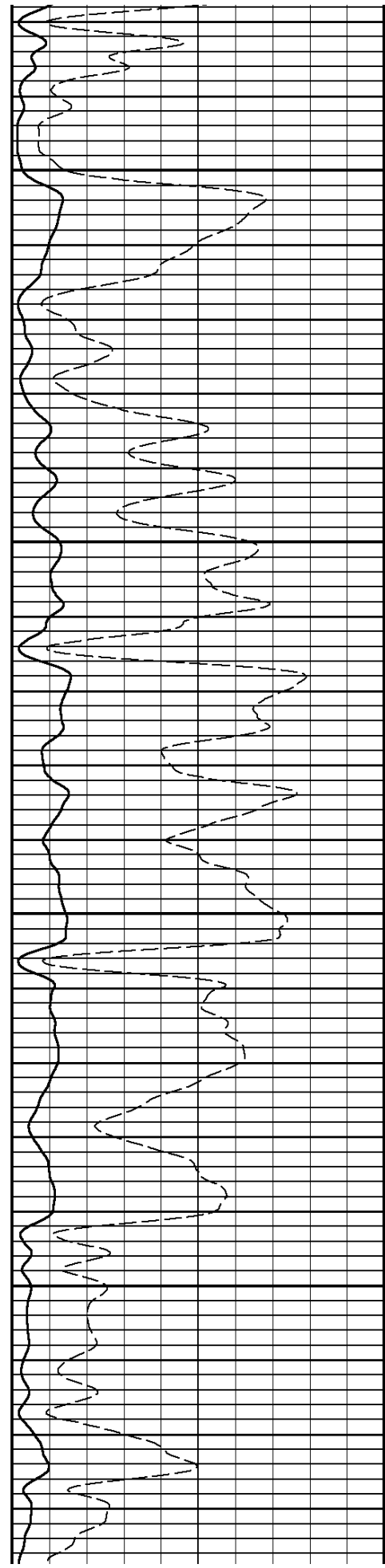
3000

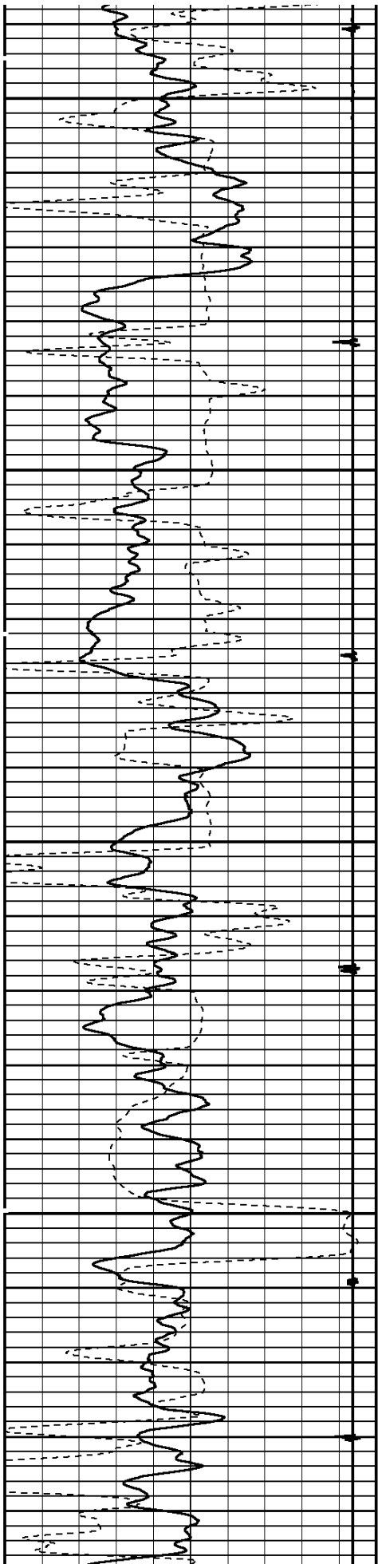




3100

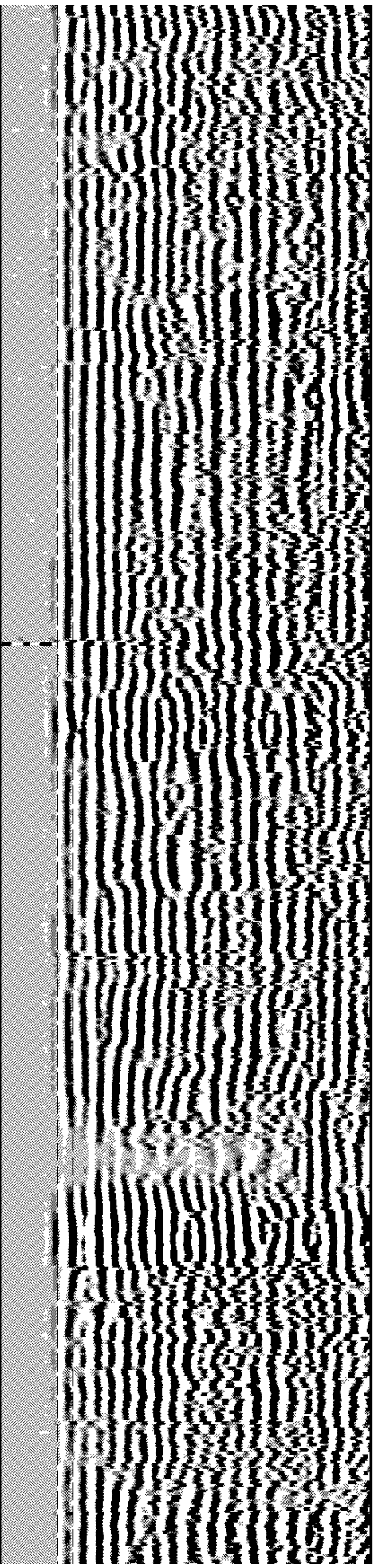
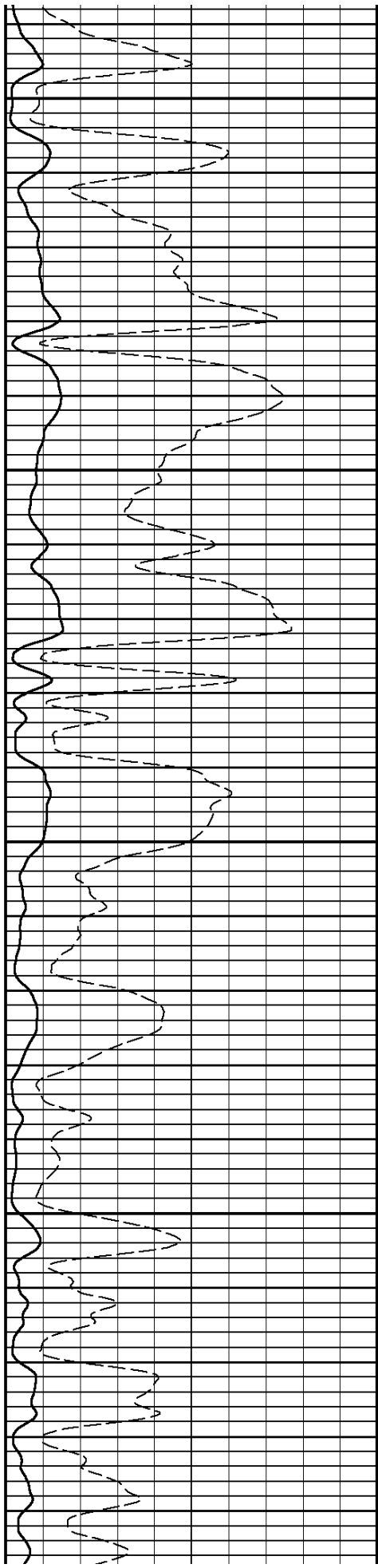
3200

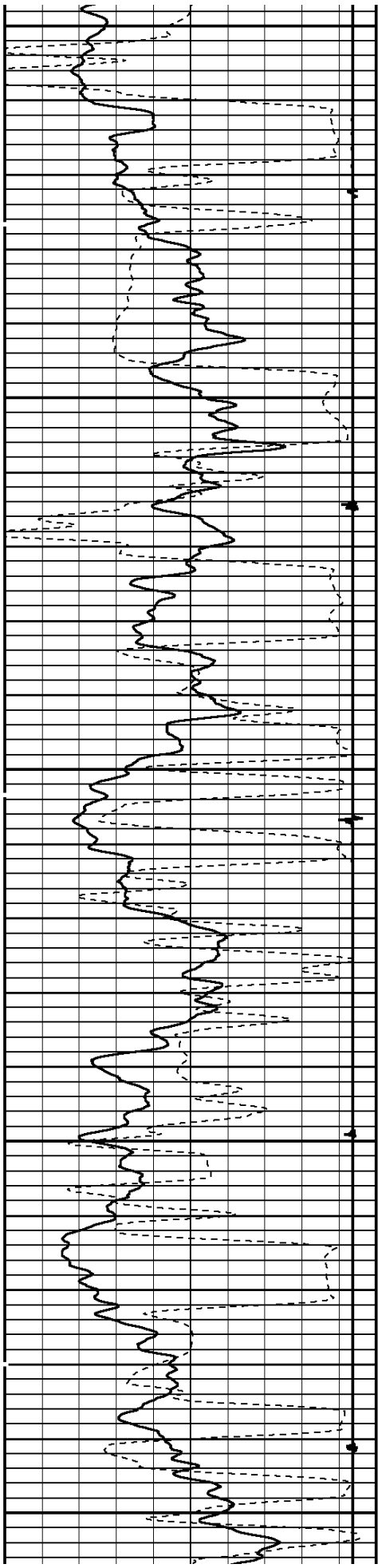




3300

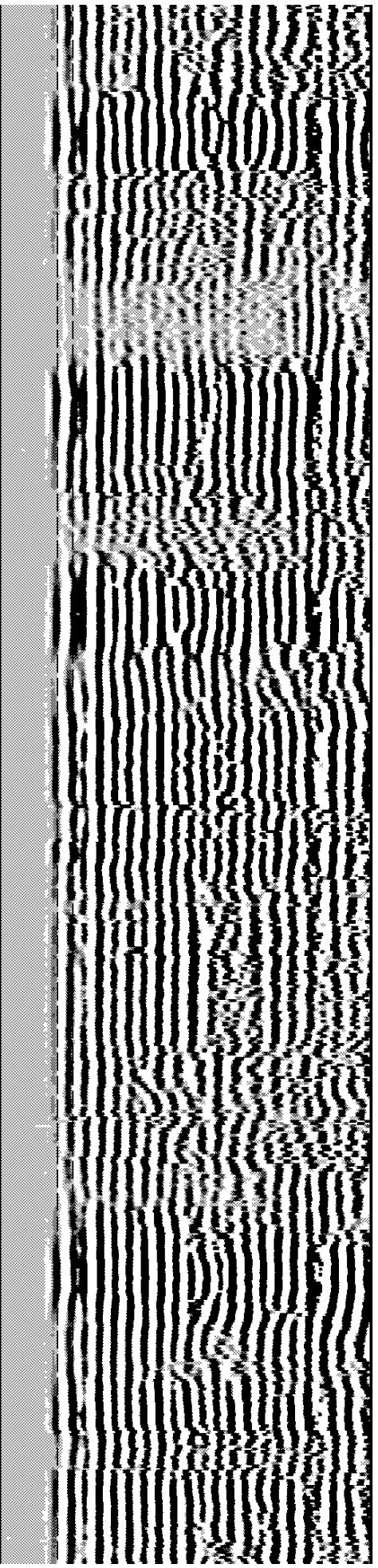
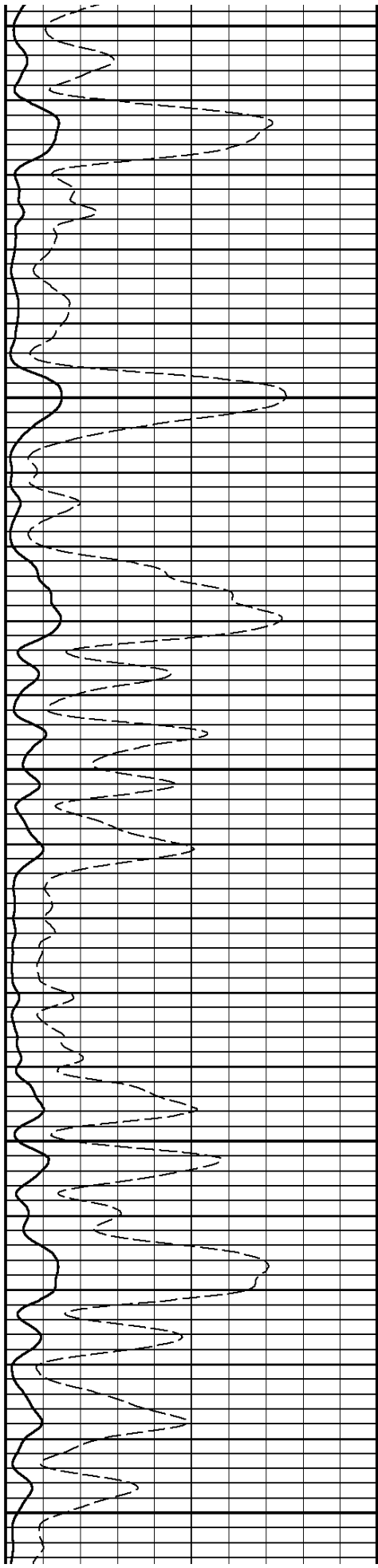
3400

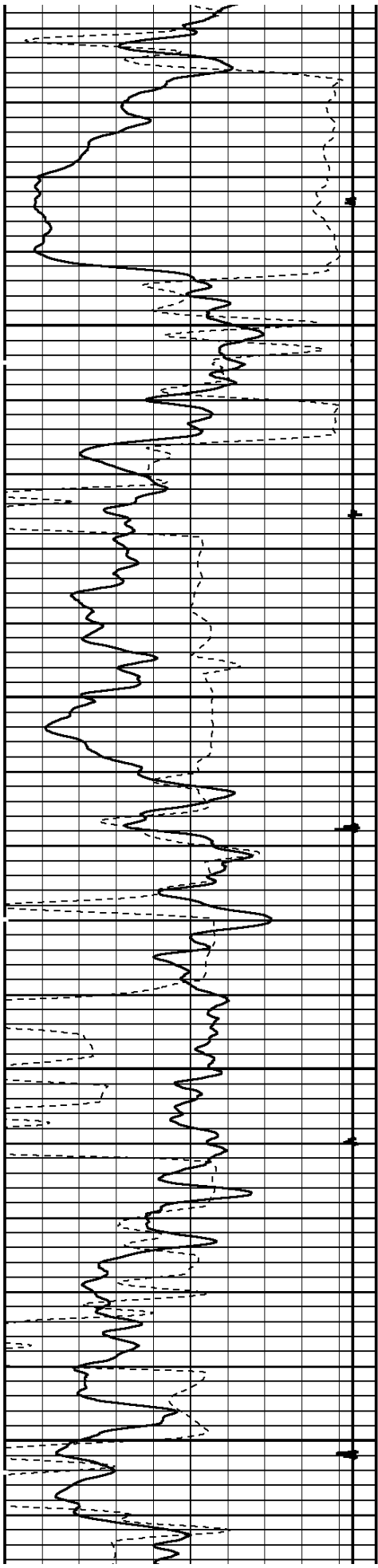




3500

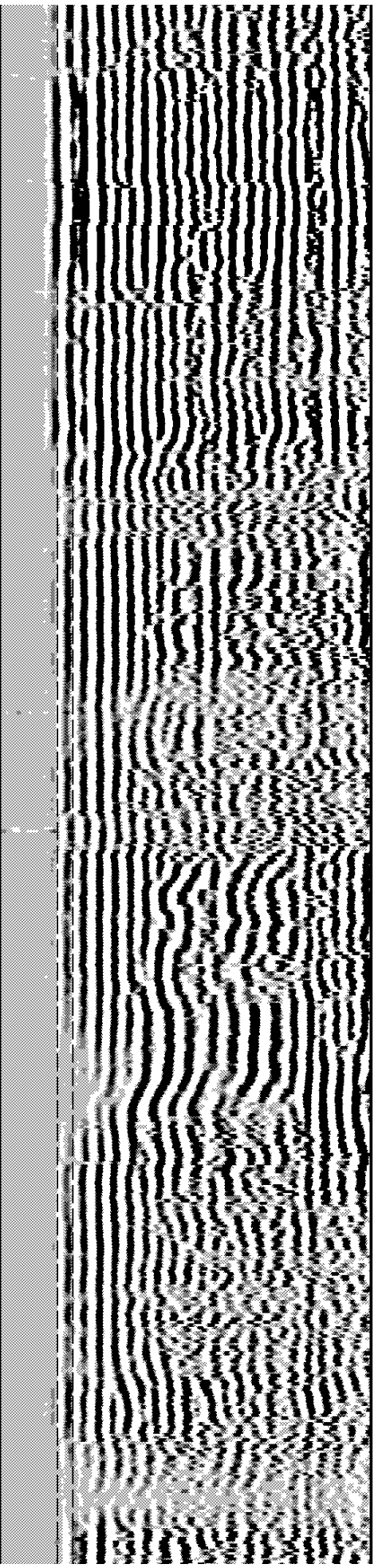
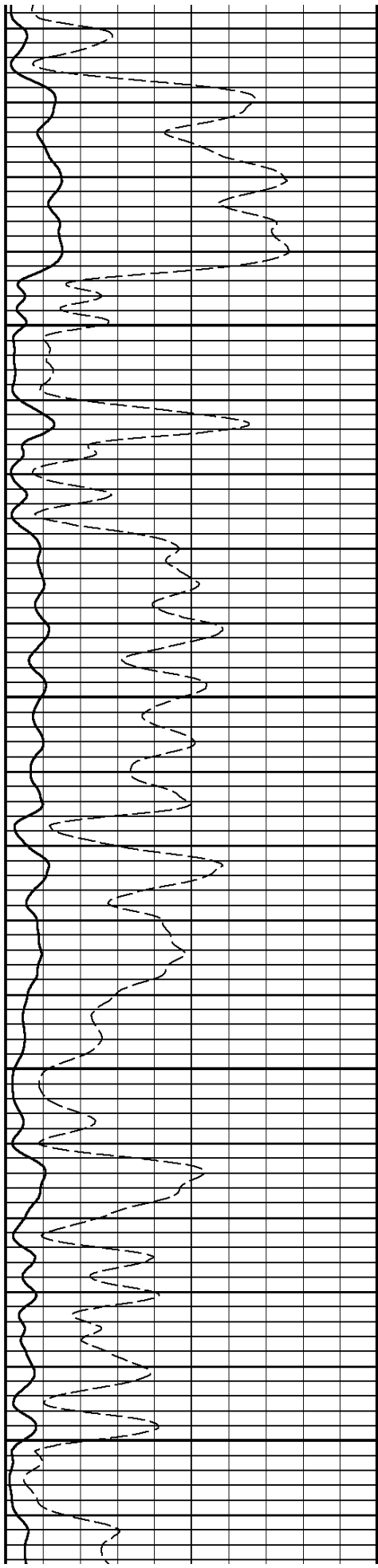
3600

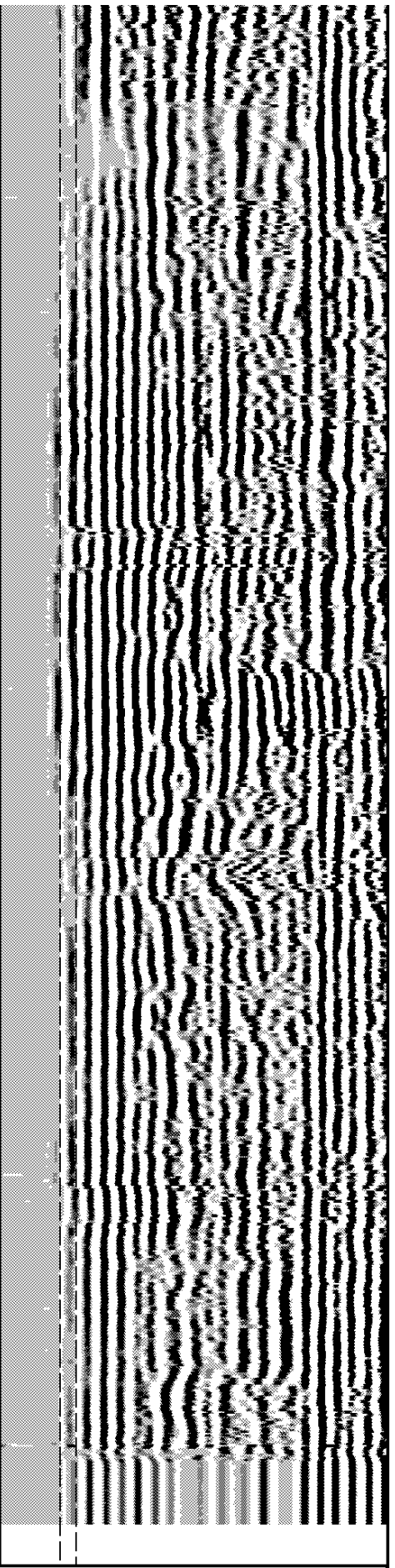
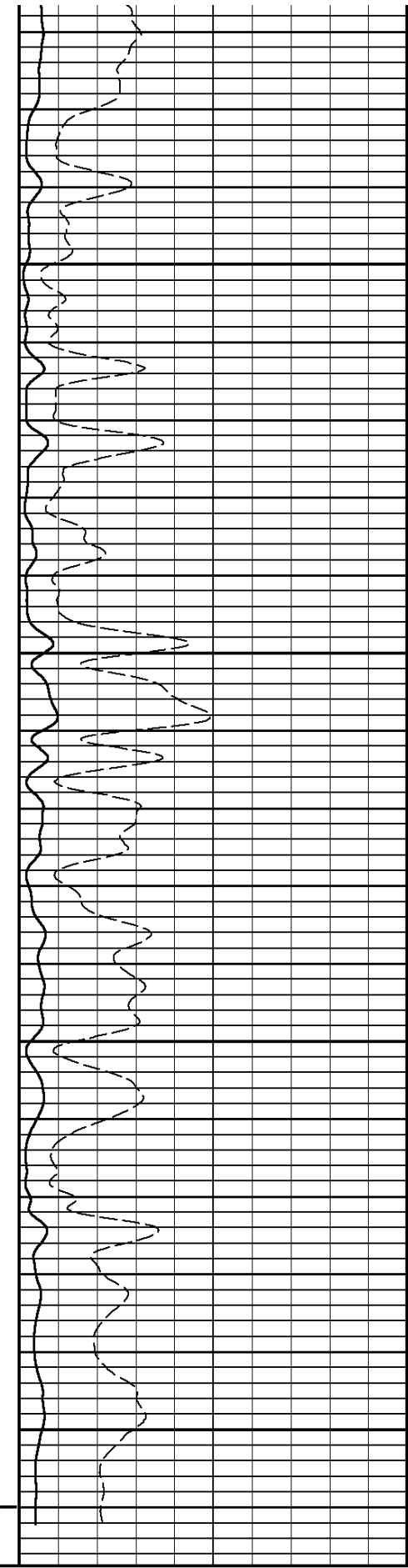
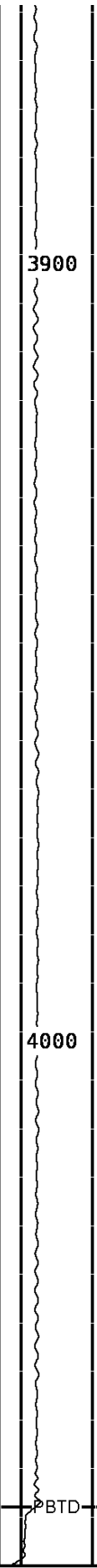
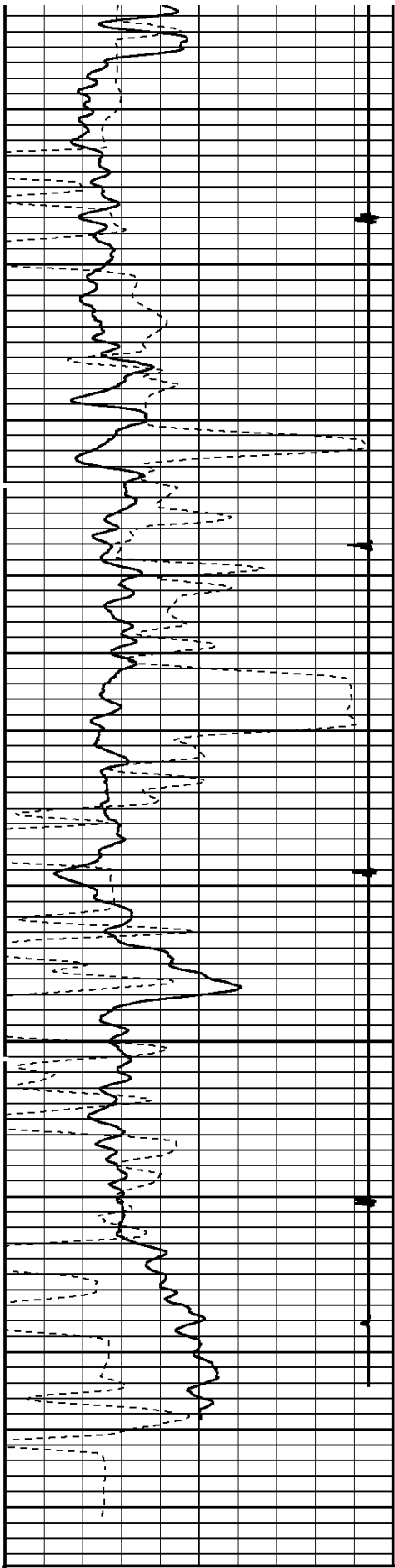




3700

3800





TRAVEL TIME 3FT

Tension

AMPLITUDE 3FT

VARIABLE DENSITY 5FT

|                       |              |     |   |      |   |                         |     |     |                       |      |  |
|-----------------------|--------------|-----|---|------|---|-------------------------|-----|-----|-----------------------|------|--|
| 310                   | Microseconds | 210 | 0 | 3000 | 0 | Millivolts              | 100 | 200 | Microseconds          | 1200 |  |
| <b>Gamma Ray</b>      |              |     |   |      |   | <b>AMPLITUDE 3FT X5</b> |     |     | <b>FREE PIPE GATE</b> |      |  |
| 0                     | API          | 200 | 0 |      | 0 | Millivolts              | 20  | 200 | Microseconds          | 1200 |  |
| <b>Collar Locator</b> |              |     |   |      |   | <b>FREE PIPE GATE</b>   |     |     |                       |      |  |
| -1800                 | Millivolts   | 120 |   |      |   |                         |     | 200 | Microseconds          | 1200 |  |

START DEPTH: **4067.6** DIRECTION: **UP** DATE: **06/24/2014** TIME: **13:30** MODE: **ORIGINAL**  
 RECOMPUTED DATE: **06/24/2014** TIME: **13:30**

**90822067 CBLMF**

**MAIN PASS**

DEPTH SCALE: **5":100'**

LOGGED VERSION: **2012.07.18.162"**

DEPTH SCALE: **5":100'**

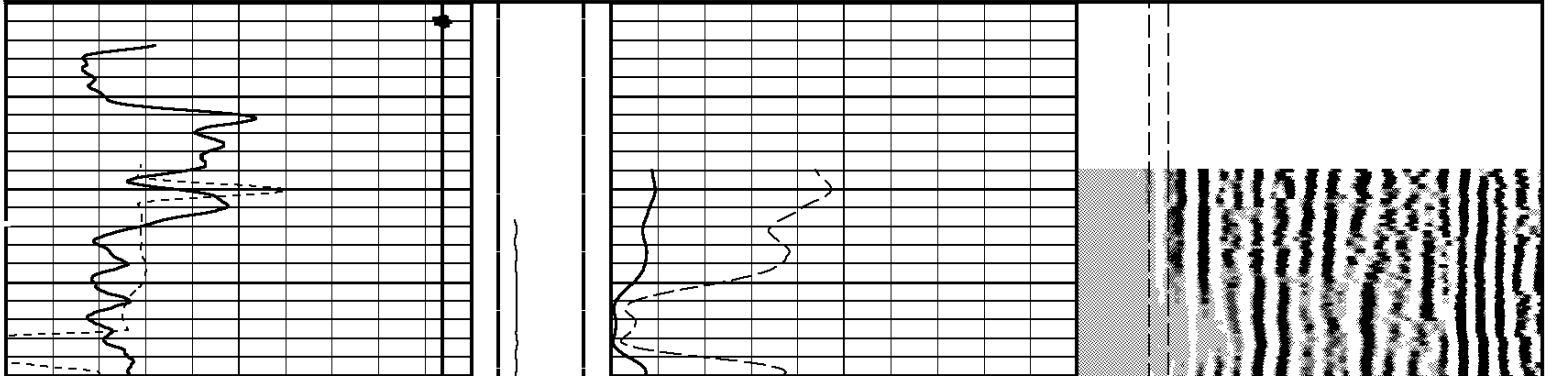
PROCESSED VERSION: **2012.07.18.162"**

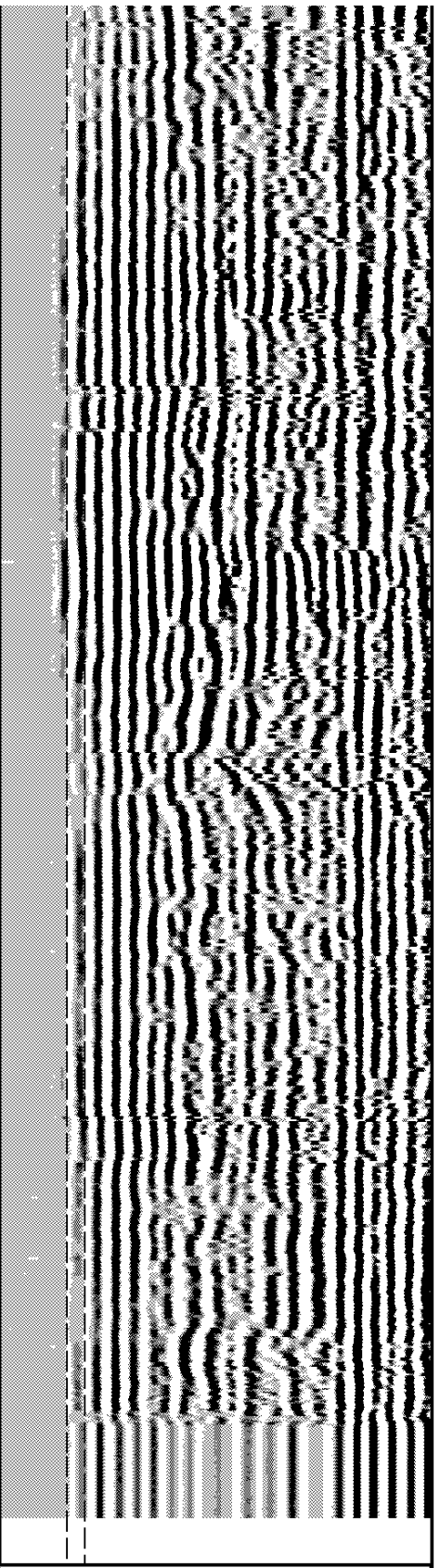
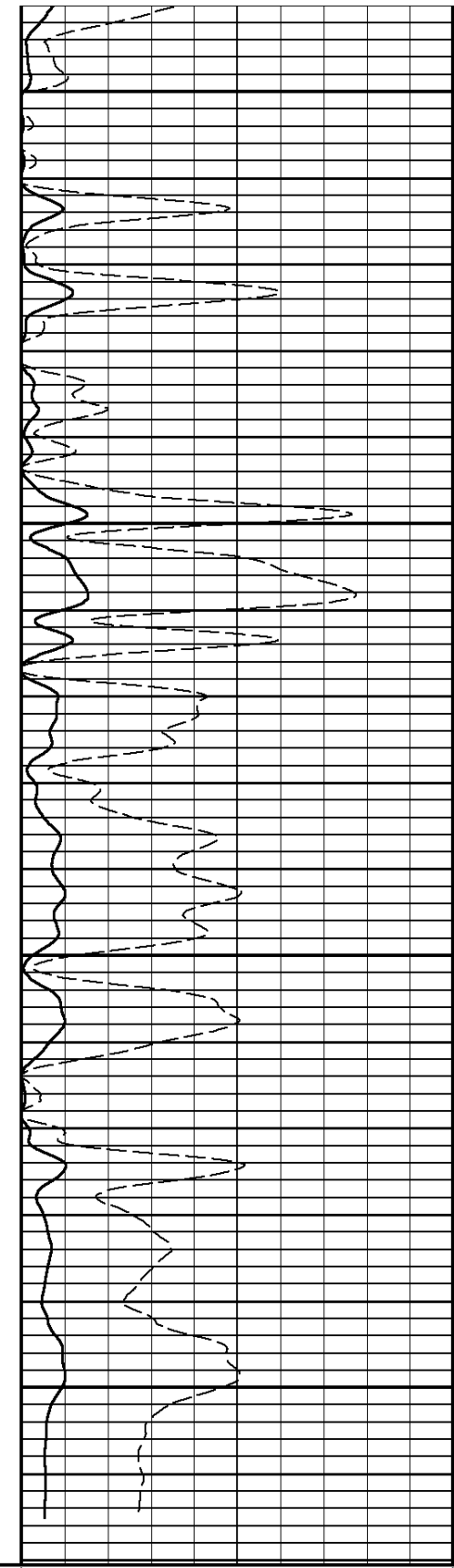
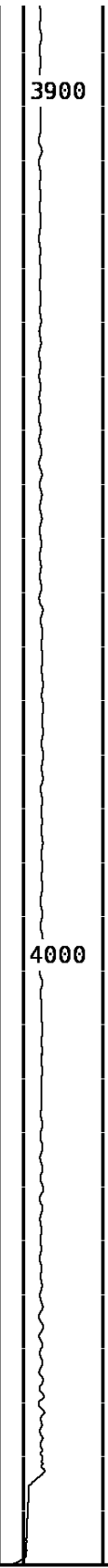
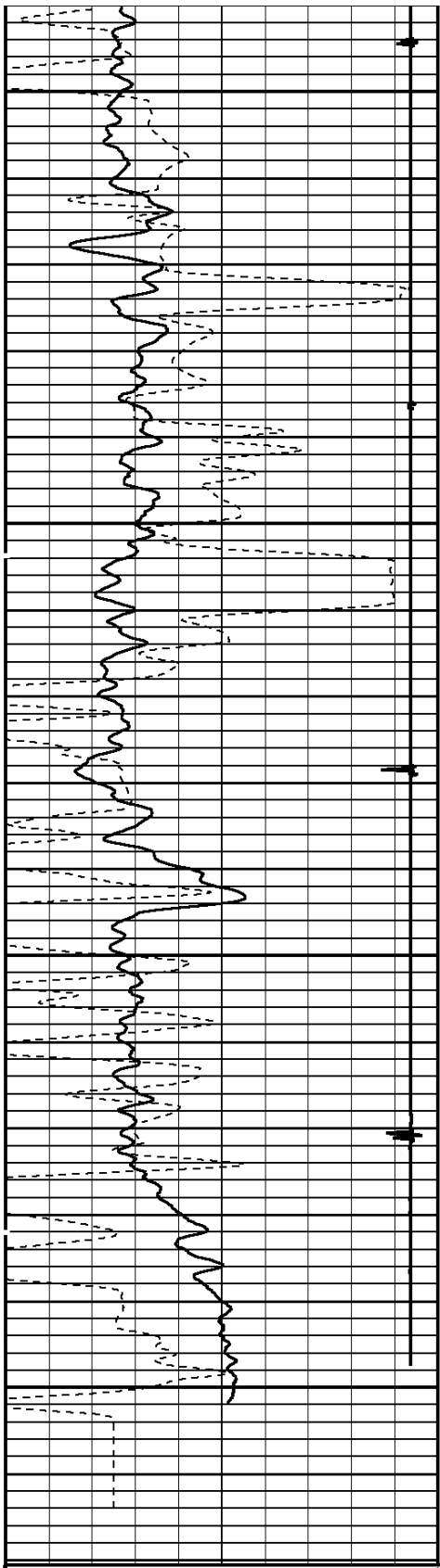
**REPEAT PASS**

**90822067 CBLRF**

FINISH DEPTH: **3873.3** Feet DIRECTION: **UP** DATE: **06/24/2014** TIME: **13:10** MODE: **ORIGINAL**  
 RECOMPUTED DATE: **06/24/2014** TIME: **13:10**

|                        |              |     |                |                      |   |                         |                             |              |  |
|------------------------|--------------|-----|----------------|----------------------|---|-------------------------|-----------------------------|--------------|--|
| <b>Collar Locator</b>  |              |     |                |                      |   | <b>FREE PIPE GATE</b>   |                             |              |  |
| -1800                  | Millivolts   | 120 |                |                      |   | 200                     | Microseconds                | 1200         |  |
| <b>Gamma Ray</b>       |              |     |                |                      |   | <b>AMPLITUDE 3FT X5</b> |                             |              |  |
| 0                      | API          | 200 | 0              |                      | 0 | Millivolts              | 20                          | 200          |  |
| <b>TRAVEL TIME 3FT</b> |              |     | <b>Tension</b> | <b>AMPLITUDE 3FT</b> |   |                         | <b>VARIABLE DENSITY 5FT</b> |              |  |
| 310                    | Microseconds | 210 | 0              | 3000                 | 0 | Millivolts              | 100                         | 200          |  |
|                        |              |     |                |                      |   |                         |                             | 200          |  |
|                        |              |     |                |                      |   |                         |                             | Microseconds |  |
|                        |              |     |                |                      |   |                         |                             | 1200         |  |





|                        |              |     |
|------------------------|--------------|-----|
| <b>TRAVEL TIME 3FT</b> |              |     |
| 310                    | Microseconds | 210 |
| <b>Gamma Ray</b>       |              |     |
| 0                      | API          | 200 |

|                |      |
|----------------|------|
| <b>Tension</b> |      |
| 0              | 3000 |

|                         |     |
|-------------------------|-----|
| <b>AMPLITUDE 3FT</b>    |     |
| 0                       | 100 |
| <b>AMPLITUDE 3FT X5</b> |     |
| 0                       | 20  |

|                             |      |
|-----------------------------|------|
| <b>VARIABLE DENSITY 5FT</b> |      |
| 200                         | 1200 |
| <b>FREE PIPE GATE</b>       |      |
| 200                         | 1200 |

**Collar Locator**

-1800 Millivolts 120

**FREE PIPE GATE**

200 Microseconds 1200

START DEPTH: **4070.6** DIRECTION: **UP** DATE: **06/24/2014** TIME: **13:10** MODE: **ORIGINAL**  
RECOMPUTED DATE: **06/24/2014** TIME: **13:10**

**90822067 CBLRF**

**REPEAT PASS**

DEPTH SCALE: **5":100'**

LOGGED VERSION: **2012.07.18.162"**

**1 7/16 Adapter Head**

Weight 2.2 LB.  
Length 2.54  
Max. Diameter 1.44 IN.

Total Stack Weight 223.0 LBS. in air  
Total Stack Length 27.83 FT.

**Slim Hole Centralizer**

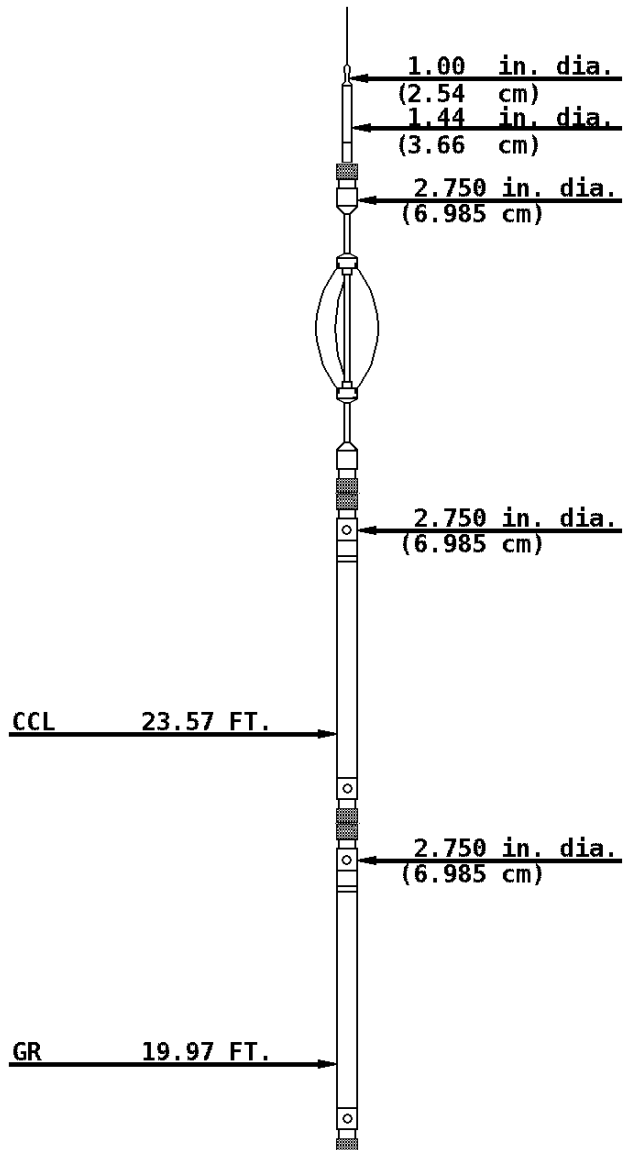
Weight 15 lbs  
Length 2.49 FT.  
Max. Diameter 2.750 IN.

**Collar Locator**

Weight 39.8 LBS.  
Length 3.40 FT.  
Max. Diameter 2.75 IN.

**Slim Hole Gamma Ray**

Weight 39.8 LBS.  
Length 4.71 FT.  
Max. Diameter 2.750 IN.



**Slim Hole Centralizer**

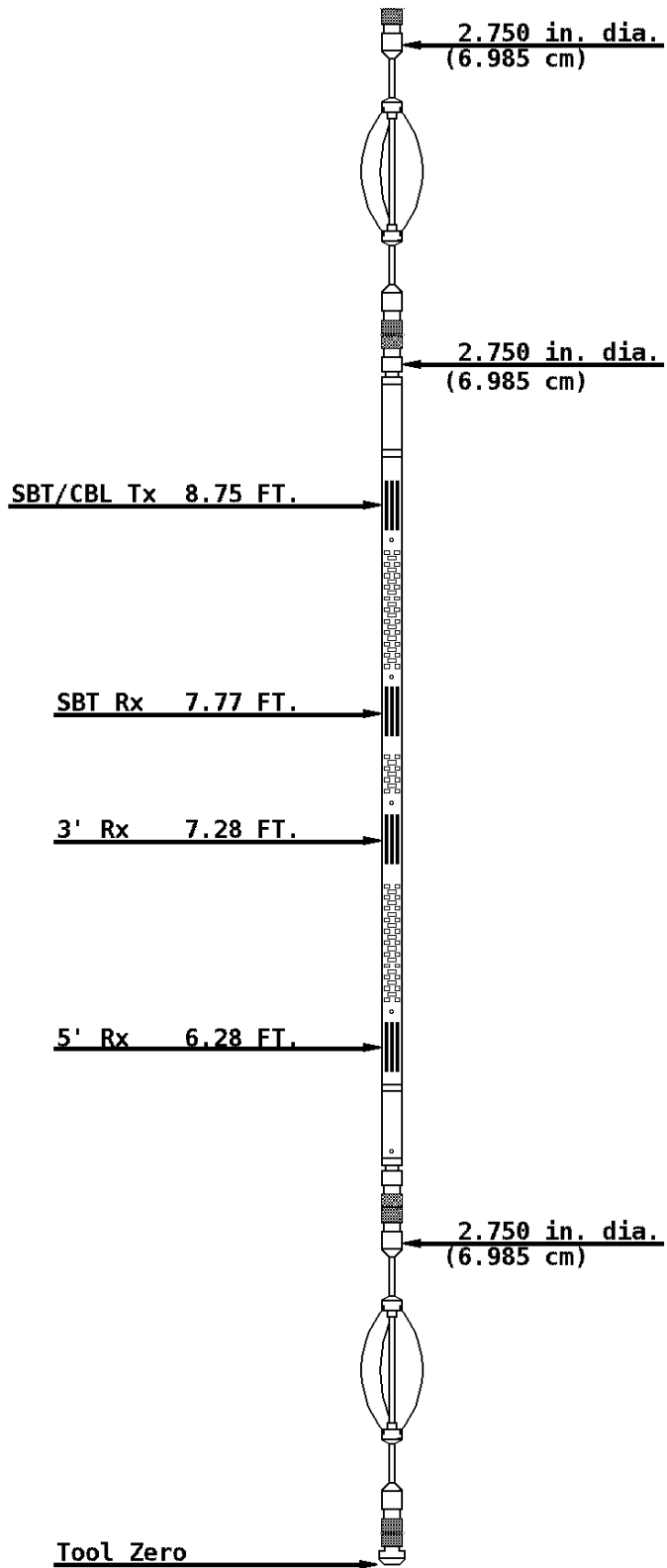
Weight 22 LBS.  
 Length 3.08 FT.  
 Max. Diameter 2.750 IN.

**Sector Bond**

Weight 89.2 LBS>  
 Length 10.32 FT.  
 Max. Diameter 2.750 IN.

**Slim Hole Centralizer**

Weight 15.0 LBS.  
 Length 2.82 FT.  
 Max. Diameter 2.750 IN.



COMPANY CATAMOUNT ENERGY PARTNERS

WELL CAMPBELL 33-7-4#1H

FIELD IGNACIO BLANCO



**Weatherford®**

COUNTY LA PLATA

STATE COLORADO

