



CATAMOUNT ENERGY PARTNERS

Scale 1:240 (5"=100') Imperial
Measured Depth Log

Well Name: **CAMPBELL 33-7-4 1H PILOT**
API: **05067099020000**
Location: **S3 T33N R7W**
License Number:
Spud Date: **6/10/14**
Surface Coordinates: **998' FSL 1178' FWL**

Region: **IGNACIO**
Drilling Completed: **6/14/14**

Bottom Hole
Coordinates:
Ground Elevation (ft): **6694** K.B. Elevation (ft): **6705**
Logged Interval (ft): **3000** To: **4114** Total Depth (ft): **4114**
Formation: **FRUITLAND COAL**
Type of Drilling Fluid: **BRINE WATER**

Printed by MUD.LOG from WellSight Systems 1-800-447-1534 www.WellSight.com

OPERATOR

Company: **CATAMOUNT ENERGY PARTNERS**
Address: **1801 BROADWAY #1000**
DENVER CO 80202

GEOLOGIST

Name: **NOLAN REDMOND**
Company: **CATAMOUNT ENERGY PARTNERS**
Address: **1801 BROADWAY #1000**
DENVER CO 80202

Cores

DSTs

Comments

ROCK TYPES

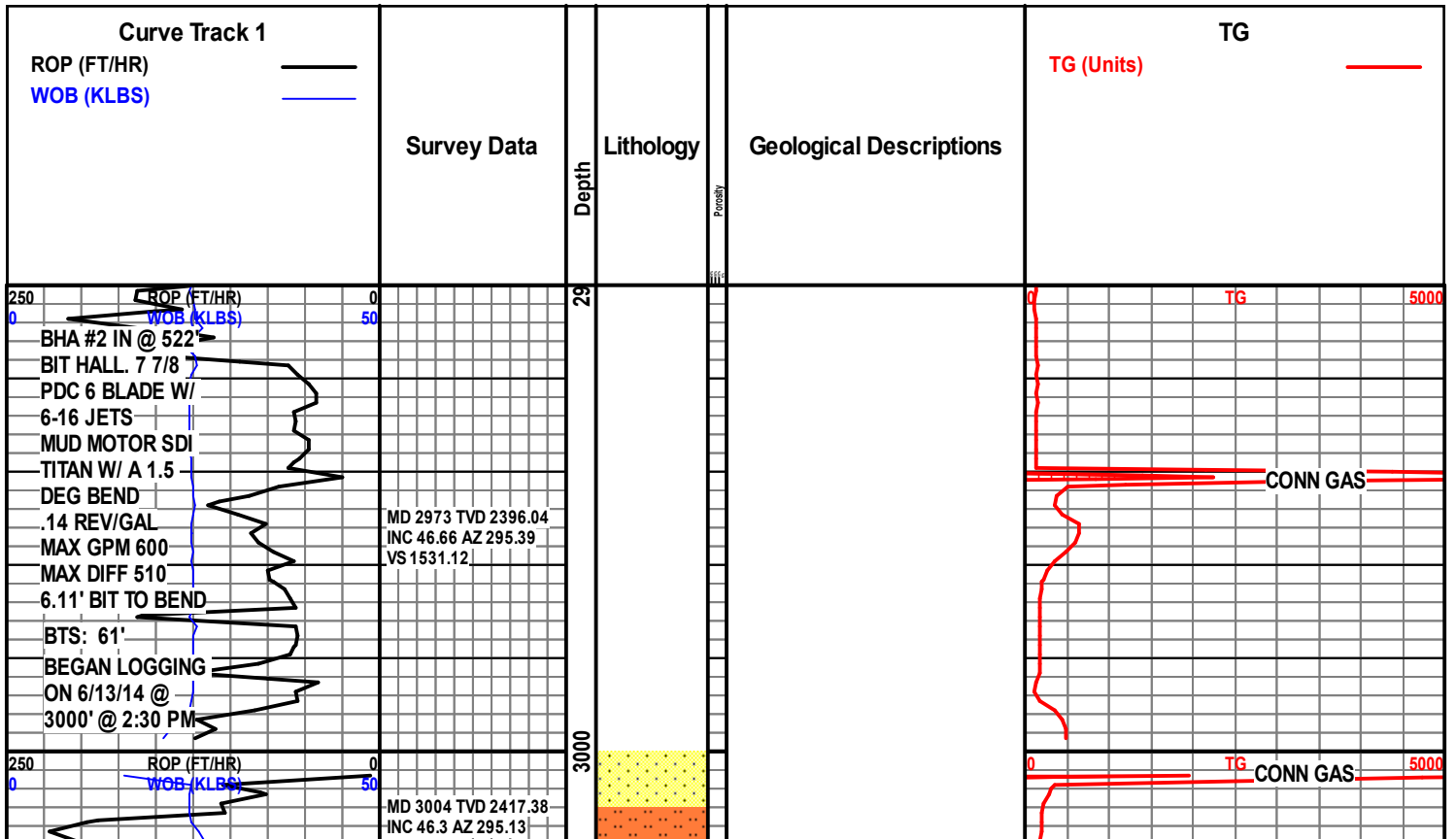
Anhy	Clyst	Gyp	Mrlst	Shgy
Bent	Coal	Igne	Salt	Sltst
Brec	Congl	Lmst	Shale	Ss
Cht	Dol	Meta	Shcol	Till

ACCESSORIES

MINERAL	Gyp	FOSSIL	Ostra	Sltstrg
Anhy	Hvymin	Algae	Pelec	Ssstrg
Arggrn	Kaol	Amph	Pellet	TEXTURE
Arg	Marl	Belm	Pisolite	Boundst
Bent	Minxl	Bioclst	Plant	Chalky
Bit	Nodule	Brach	Strom	Cryxln
Brecfrag	Phos	Bryozoa	STRINGER	Earthy
Calc	Pyr	Cephal	Anhy	Finexln
Carb	Salt	Coral	Arg	Grainst
Chtdk	Sandy	Crin	Bent	Lithogr
Chtlt	Silt	Echin	Coal	Microxln
Dol	Sil	Fish	Dol	Mudst
Feldspar	Sulphur	Foram	Gyp	Packst
Ferrpel	Tuff	Fossil	Ls	Wackest
Ferr		Gastro	Mrst	
Glau		Oolite		

OTHER SYMBOLS

POROSITY	Vuggy	ROUNDING	Spotted	EVENT
Earthy	SORTING	Rounded	Ques	Rft
Fenest	Well	Subrnd	Dead	Sidewall
Fracture	Moderate	Subang	INTERVAL	
Inter	Poor	Angular	Core	
Moldic		OIL SHOW	Dst	
Organic		Even		
Pinpoint				



SPM 165
PP 1350
ROT44
GPM 475

WT 9.2
VISC 48

DEPTH CORR.

VS 1553.6

MD 3036 TVD 2439.4
INC 46.77 AZ 294.79
VS 1576.83

SS CLR OFFFWH GRY-GRN VFG
SBRDD SM SBANG PRED
WELLCEM SM UNCONS MOD
SRTD OCC GRDD TO SLST
MHD HD

SLIDING 360

CONN GAS

DEPTH CORR.

MD 3067 TVD 2460.4
INC 47.94 AZ 295.23
VS 1599.63

SS OFFFWH CLR GRY-GRN BRN
GRDD TO SLST WELLCEM SM
GLAUC OCC ARK SM W/ CARB
STRKS MHD HD

SLIDING 360

CONN GAS

WT 9.2
VISC 47

DEPTH CORR.

MD 3099 TVD 2481.73
INC 48.46 AZ 294.81
VS 1623.48

SS OFFFWH CLR GRY-GRN BRN
GRDD TO SLST WELLCEM SM
GLAUC OCC ARK SM W/ CARB
STRKS MHD HD SM V DULL
YELLOW FLUOR

SS MGY BRN OFFFWH CLR FG
OCC GRDD TO SLST
WELLCEM OCC GLAUC SM W/
CARB STRKS MHD

CONN GAS

CONN GAS

MD 3130 TVD 2502.42
INC 47.81 AZ 293.95
VS 1646.57

SS MGY BRN OFFFWH CLR FG
OCC GRDD TO SLST
WELLCEM OCC GLAUC SM W/
CARB STRKS MHD

CONN GAS

MD 3162 TVD 2524.03
INC 47.2 AZ 293.72
VS 1670.16

SLST MGY BRN SM DKGY OCC
GRDD TO SH SM VFGSS
OFFFWH CLR WELLCEM OCC
W/ CARB STRKS MHD

CONN GAS

250 ROP (FT/HR)
0 WOB (KLBS)
50

DEPTH CORR.

MD 3193 TVD 2545.04
INC 47.49 AZ 293.95
VS 1692.95

SLIDING 360

TG

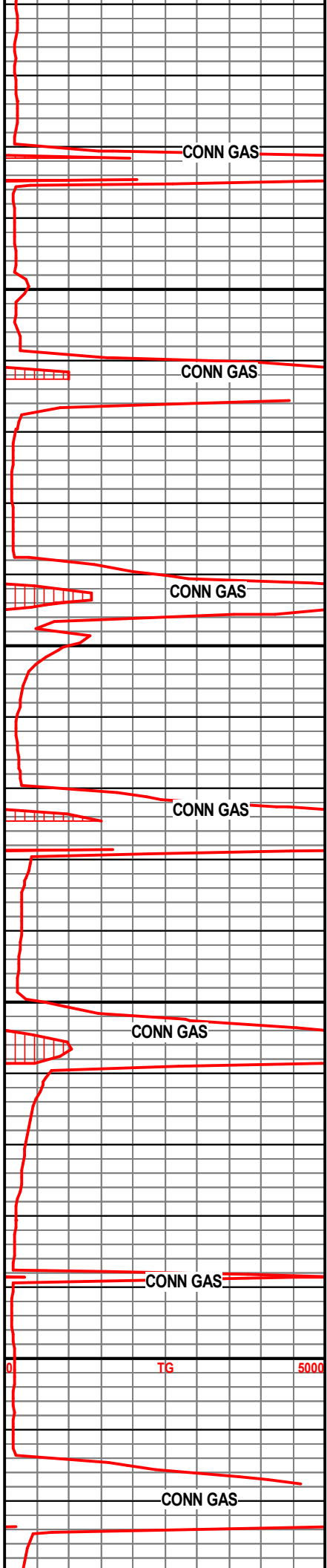
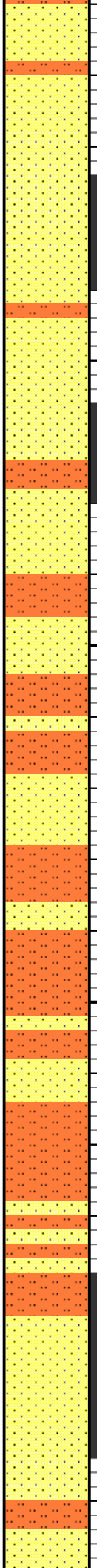
5000

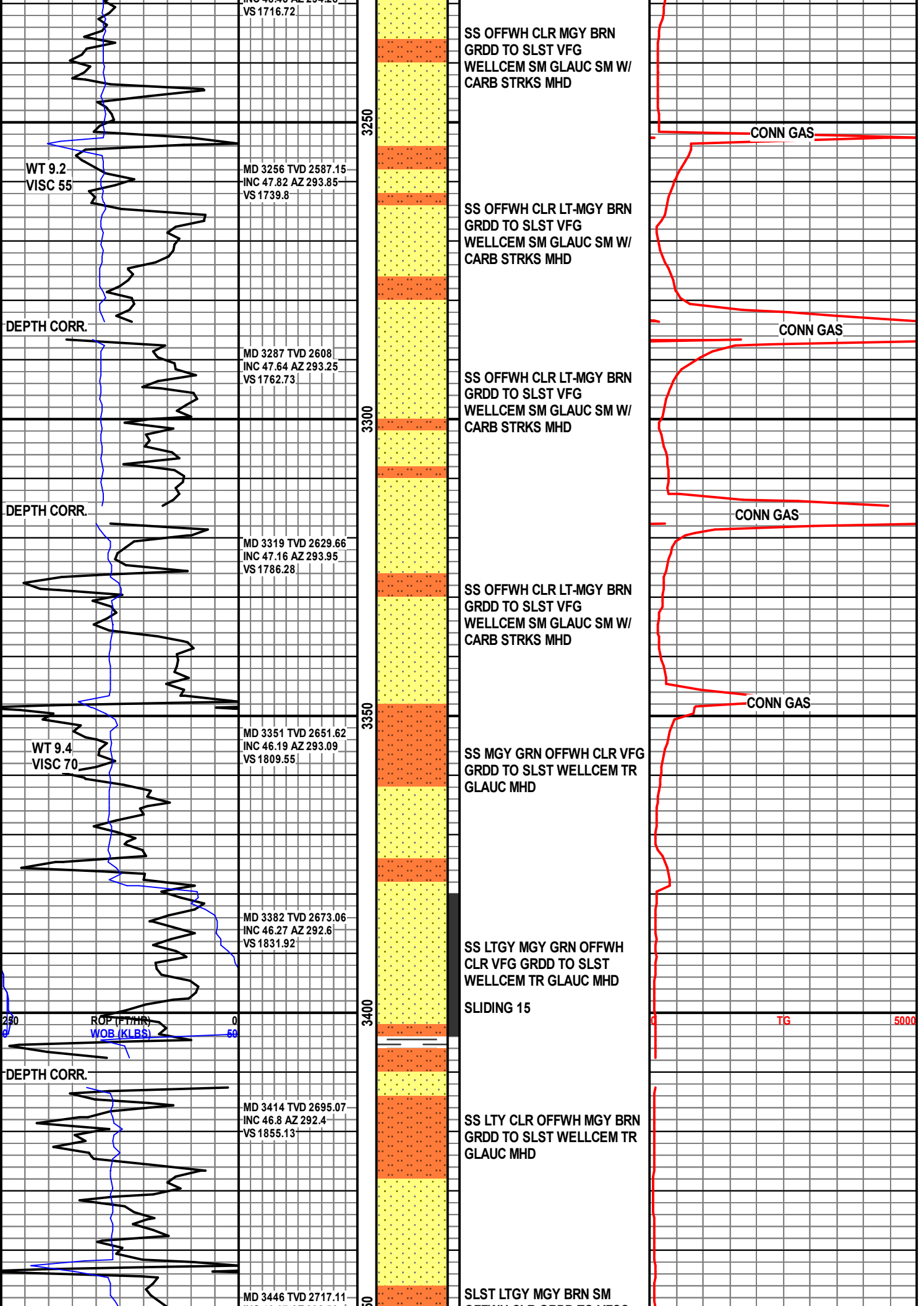
SS OFFFWH CLR MGY BRN
GRDD TO SLST VFG
WELLCEM SM W/ CARB
STRKS MHD

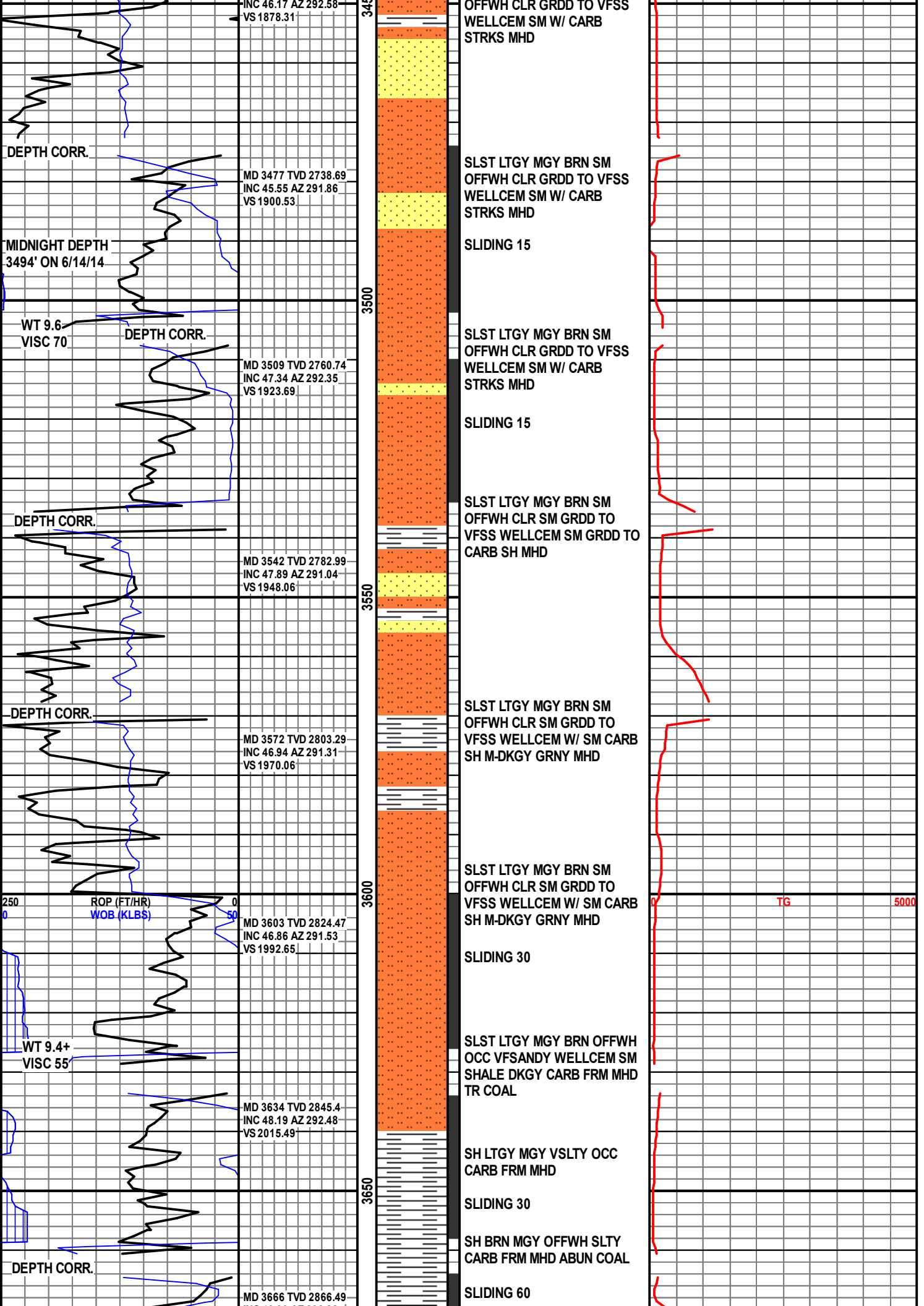
CONN GAS

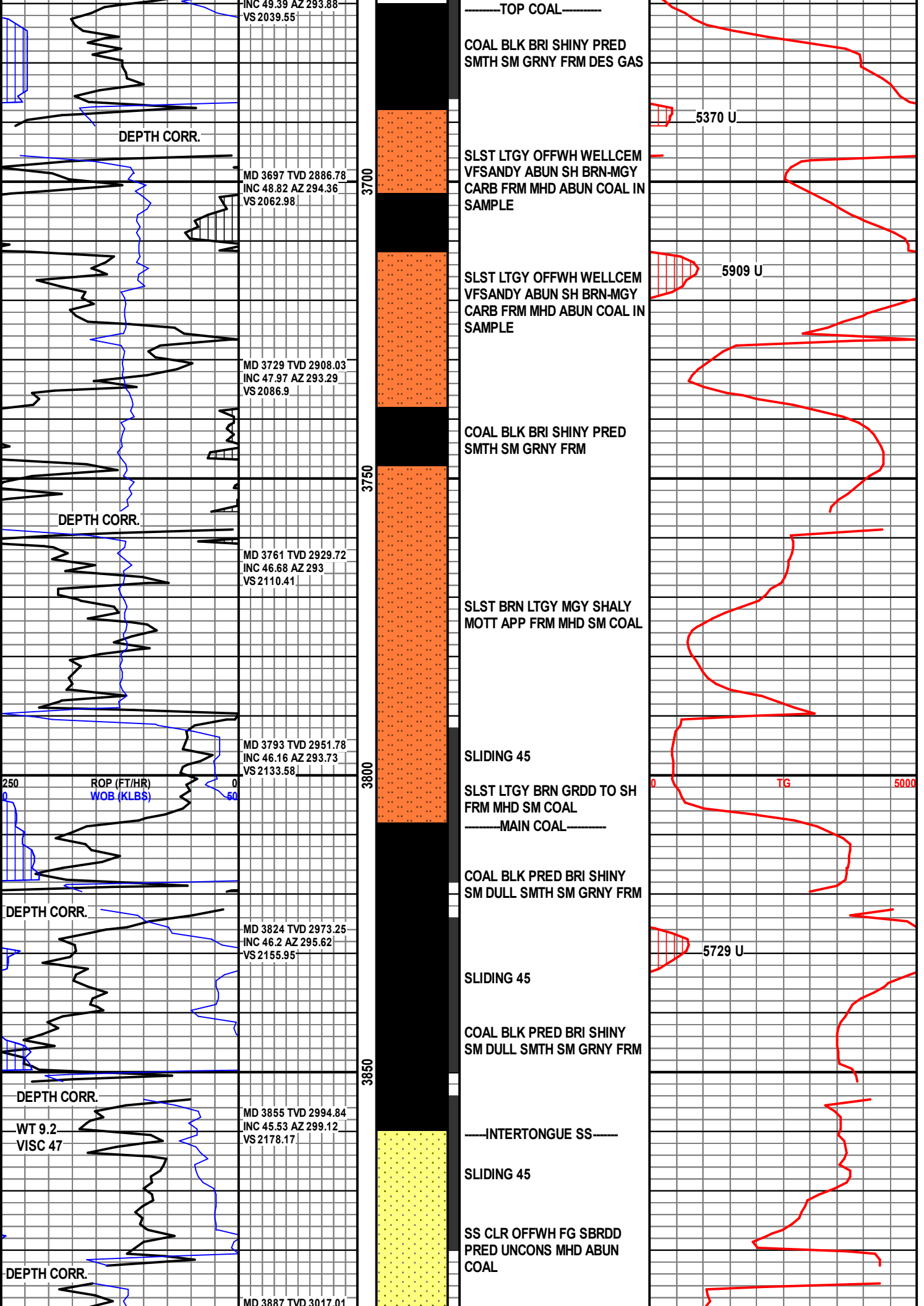
MD 3225 TVD 2566.46
INC 48.45 AZ 294.28

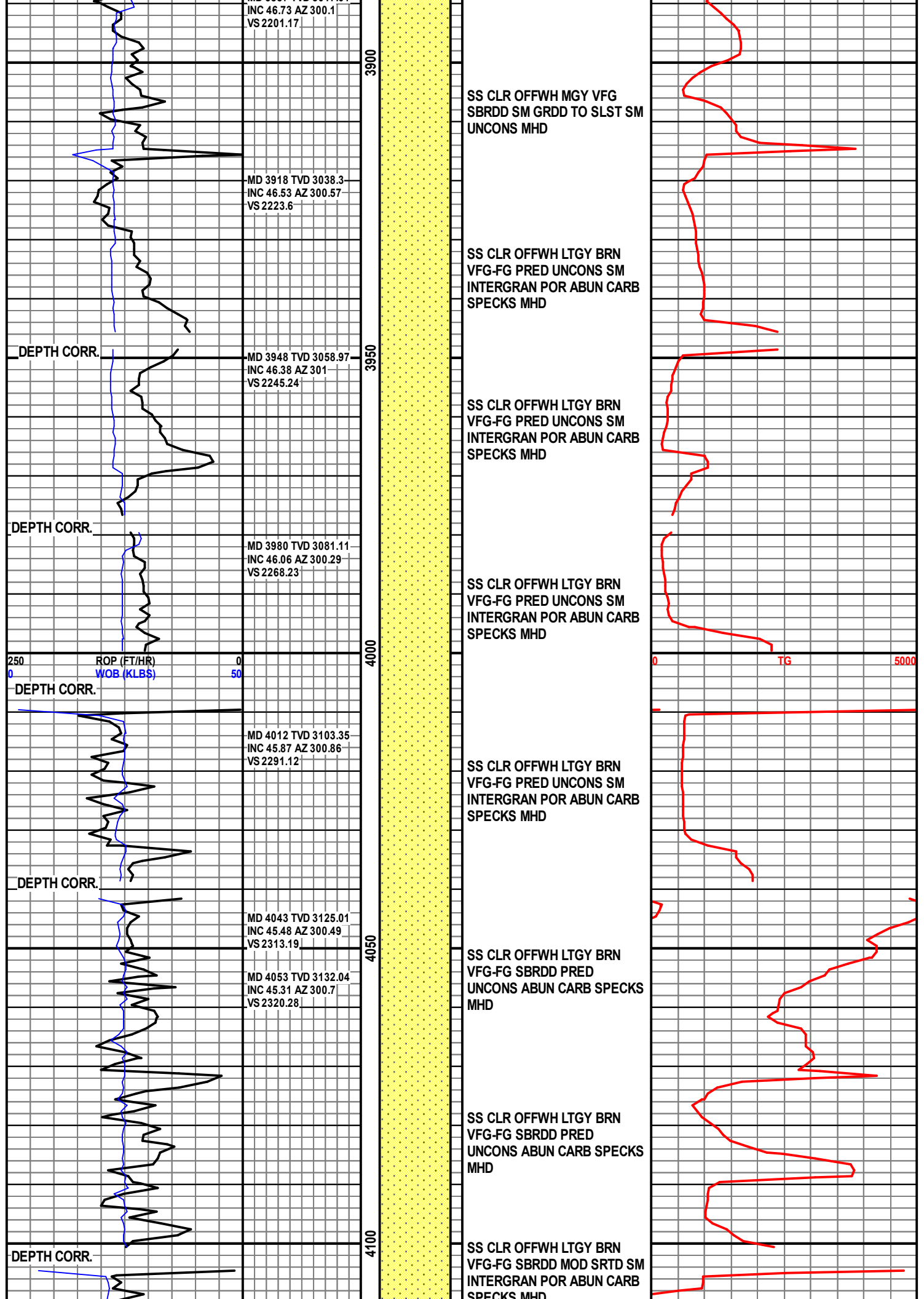
3050
3100
3150
3200













TD @ 4114' ON
6/14/14 @ 8:45 AM

PROJ TO BIT

MD 4114 TVD 3174.91
INC 45.31 AZ 300.7
VS 2363.46

50

OF LOGS MID