

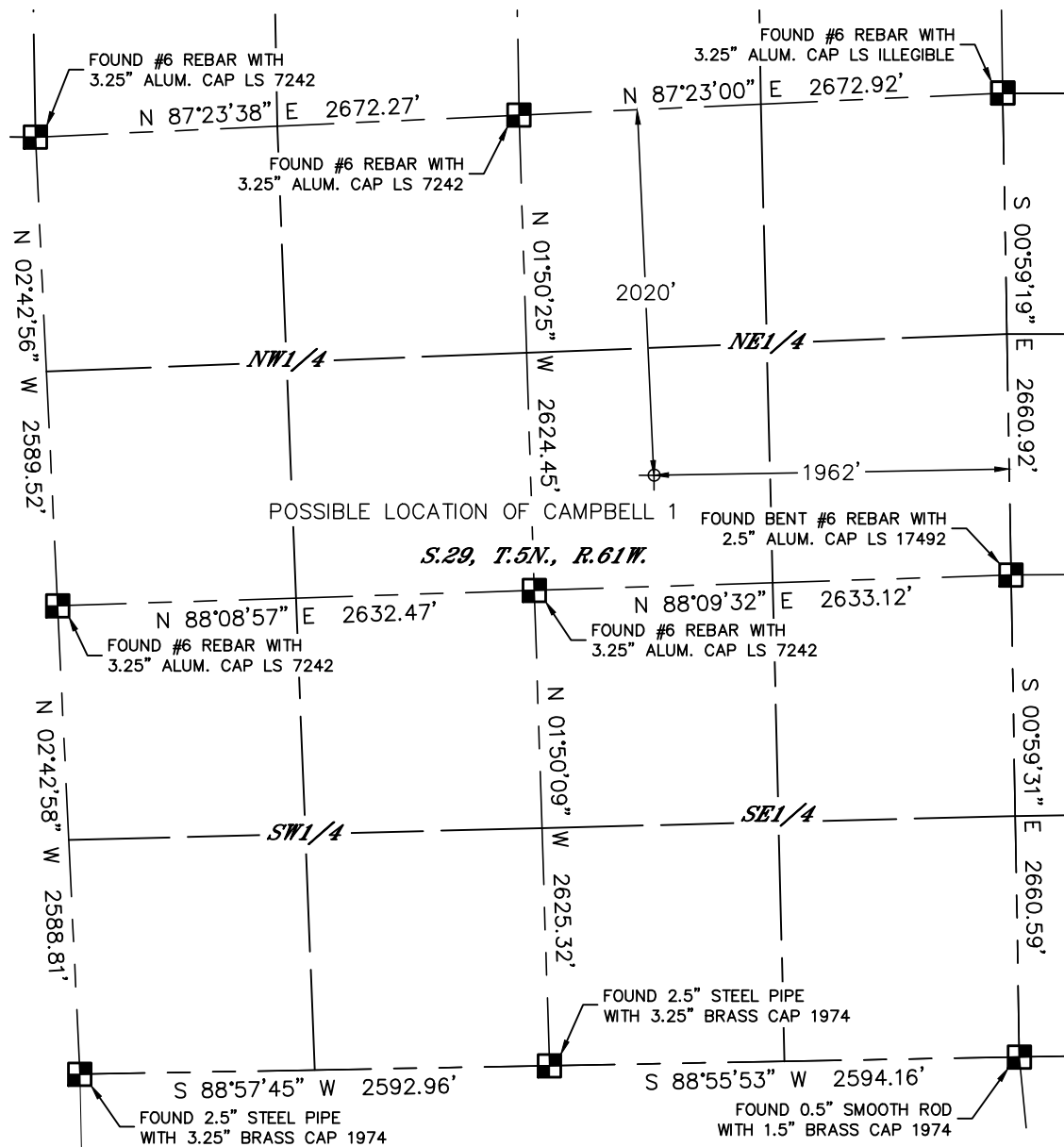


Lat40°, Inc. 1635 Foxtrail Drive, Suite 325 Loveland, CO 970-776-3321

# PLUGGED & ABANDONED WELL EXHIBIT

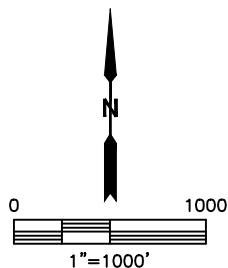
THIS MAP DOES NOT REPRESENT A BOUNDARY SURVEY

SECTION: 29  
TOWNSHIP: 5N  
RANGE: 61W



SURFACE LOCATION  
LAT: 40.37346°N  
LONG: 104.23065°W  
PDOP: 2.3  
ELEV: 4600'  
1/4,1/4: SW1/4NE1/4

SURFACE DESCRIPTION  
FOUND A STRONG METAL DETECTOR SIGNAL WITHIN 4'  
DIA. OF LOCATION. SET ORANGE LATH.



## LEGEND

- = ALIQUOT MONUMENT AS DESCRIBED
- = CALCULATED POSITION

DATE: 3/20/2014  
PROJECT#: 2013173



Lat40°, Inc. 1635 Foxtrail Drive, Suite 325 Loveland, CO 970-776-3321

## P&A WELL LOCATION PICTURES

CAMBELL 1

SECTION: 29  
TOWNSHIP: 5N  
RANGE: 61W

DATE: 1/27/2014



VIEW NORTH



VIEW WEST



VIEW EAST



VIEW SOUTH

DATE: 3/20/2014  
PROJECT#: 2013173