

DALEY LAND SURVEYING, INC. PARKER, CO. 80134 303 953 9841
MULTI-WELL PLAN – PISMO EAST 35-26-23-2-1CH PAD
 SECTION 35, TOWNSHIP 12 NORTH, RANGE 66 WEST OF THE 6TH P.M.

WELL ORDER



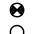
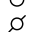


EAST TO WEST

1. PISMO EAST 35-26-23-2-1CH
2. PISMO EAST 35-2-2-2CH
3. PISMO EAST 35-26-23-2-3CH
4. PISMO EAST 35-2-2-4CH

NOTES:

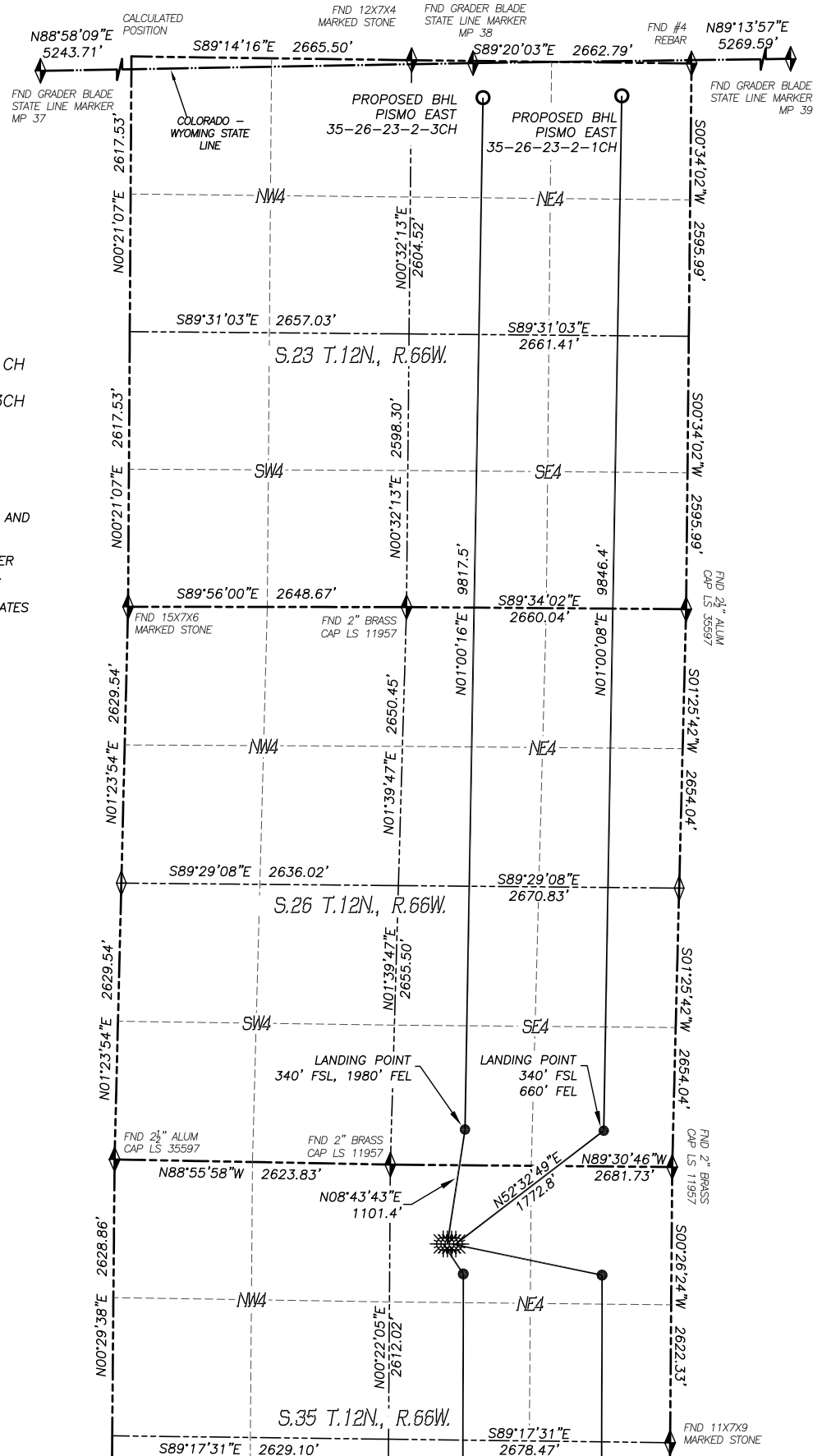
- 1) BEARINGS FOR THIS MAP ARE ASSUMED AND BASED UPON GPS OBSERVATIONS MADE BETWEEN MONUMENTS LOCATED AT THE NORTHEAST CORNER AND NORTH QUARTER CORNER OF SECTION 35, T.12N., R.65W.
- 2) HORIZONTAL DATUM IS NAD83.
- 3) VERTICAL DATUM IS NAVD88 AND ORIGINATES FROM THE LOCAL C.O.R.S. NETWORK, UTILIZING THE GEOID12A MODEL.

LEGEND

-  FOUND MONUMENT AS DESCRIBED
-  PROPOSED WELL
-  EXISTING WELL
-  BOTTOM HOLE
-  ABANDONED WELL
-  CALCULATED POSITION



0 1500
 SCALE: 1" = 1500'



DALEY LAND SURVEYING, INC. PARKER, CO. 80134 303 953 9841
MULTI-WELL PLAN – PISMO EAST 35-26-23-2-1CH PAD
 SECTION 35, TOWNSHIP 12 NORTH, RANGE 66 WEST OF THE 6TH P.M.

WELL ORDER



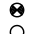
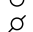


EAST TO WEST

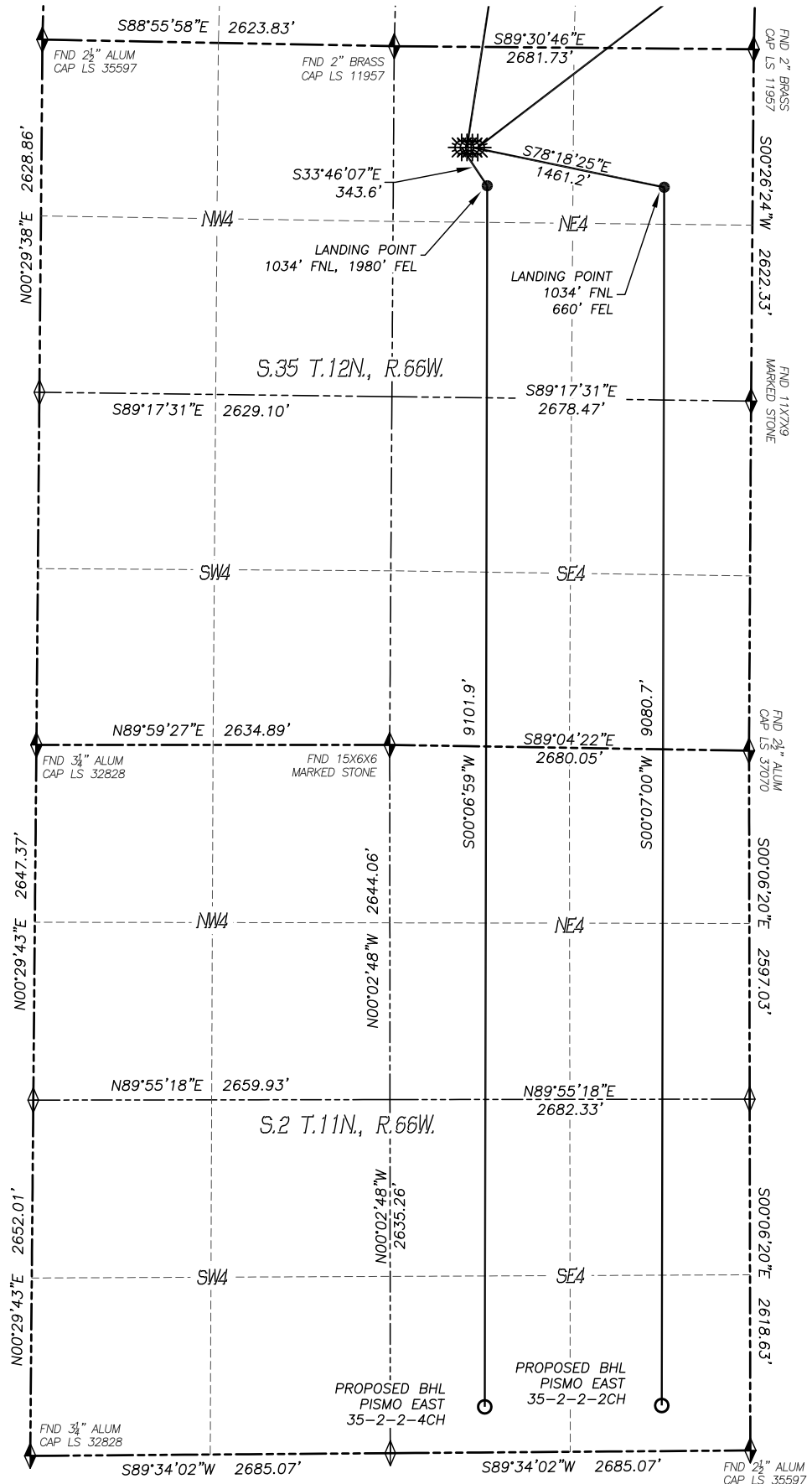
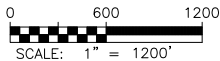
1. PISMO EAST 35-26-23-2-1CH
2. PISMO EAST 35-2-2-2CH
3. PISMO EAST 35-26-23-2-3CH
4. PISMO EAST 35-2-2-4CH

NOTES:

- 1) BEARINGS FOR THIS MAP ARE ASSUMED AND BASED UPON GPS OBSERVATIONS MADE BETWEEN MONUMENTS LOCATED AT THE NORTHEAST CORNER AND NORTH QUARTER CORNER OF SECTION 35, T.12N., R.65W.
- 2) HORIZONTAL DATUM IS NAD83.
- 3) VERTICAL DATUM IS NAVD88 AND ORIGINATES FROM THE LOCAL C.O.R.S. NETWORK, UTILIZING THE GEOID12A MODEL.

LEGEND

-  FOUND MONUMENT AS DESCRIBED
-  PROPOSED WELL
-  EXISTING WELL
-  BOTTOM HOLE
-  ABANDONED WELL
-  CALCULATED POSITION



**MULTI-WELL PLAN – PISMO EAST 35-26-23-2-1CH PAD
LOCATION DATA**

SECTION 35, TOWNSHIP 12 NORTH, RANGE 66 WEST OF THE 6TH P.M.

BOTTOM HOLE DATA				
Well Name	Latitude	Longitude	Footage	
Pismo East 35-26-23-2-1CH	N40.99933°	W104.73551°	315' FNL	660' FEL
Pismo East 35-2-2-2CH	N40.94363°	W104.73622°	340' FSL	660' FEL
Pismo East 35-26-23-2-3CH	N40.99928°	W104.74029°	330' FROM STATE LINE	1980' FEL
Pismo East 35-2-2-4CH	N40.94360°	W104.74100°	340' FSL	1980' FEL