

MS Guidances



DDMT-140667

5":100' - TVD

8/12/2014 5:05:49 AM

Oper. Company: Whiting Petroleum

Country: USA

State / Province: CO

County / Parish: Weld

Started: 08/05/2014 02:00 AM

API/UWI: 05-123-39885

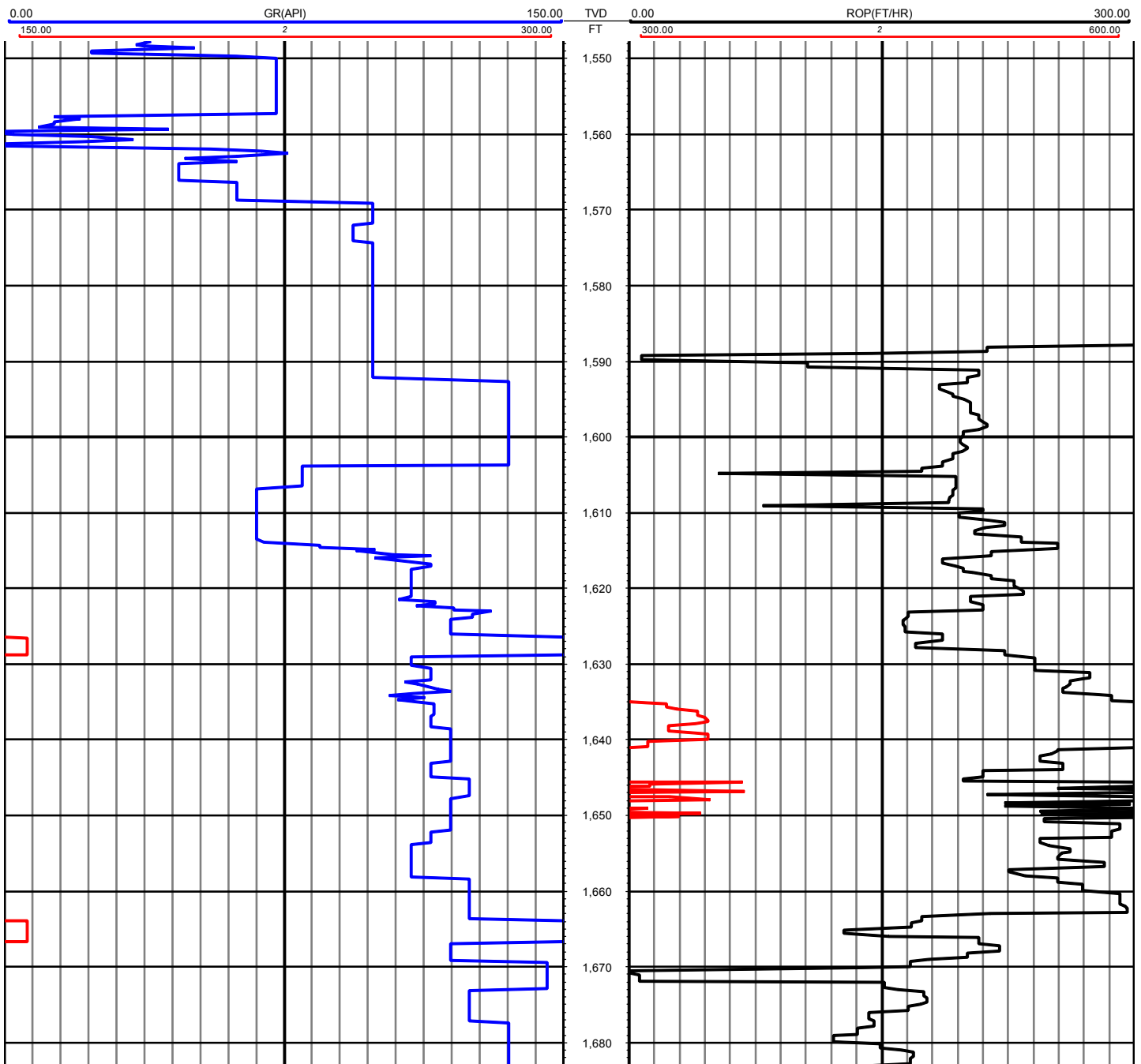
Field: Redtail

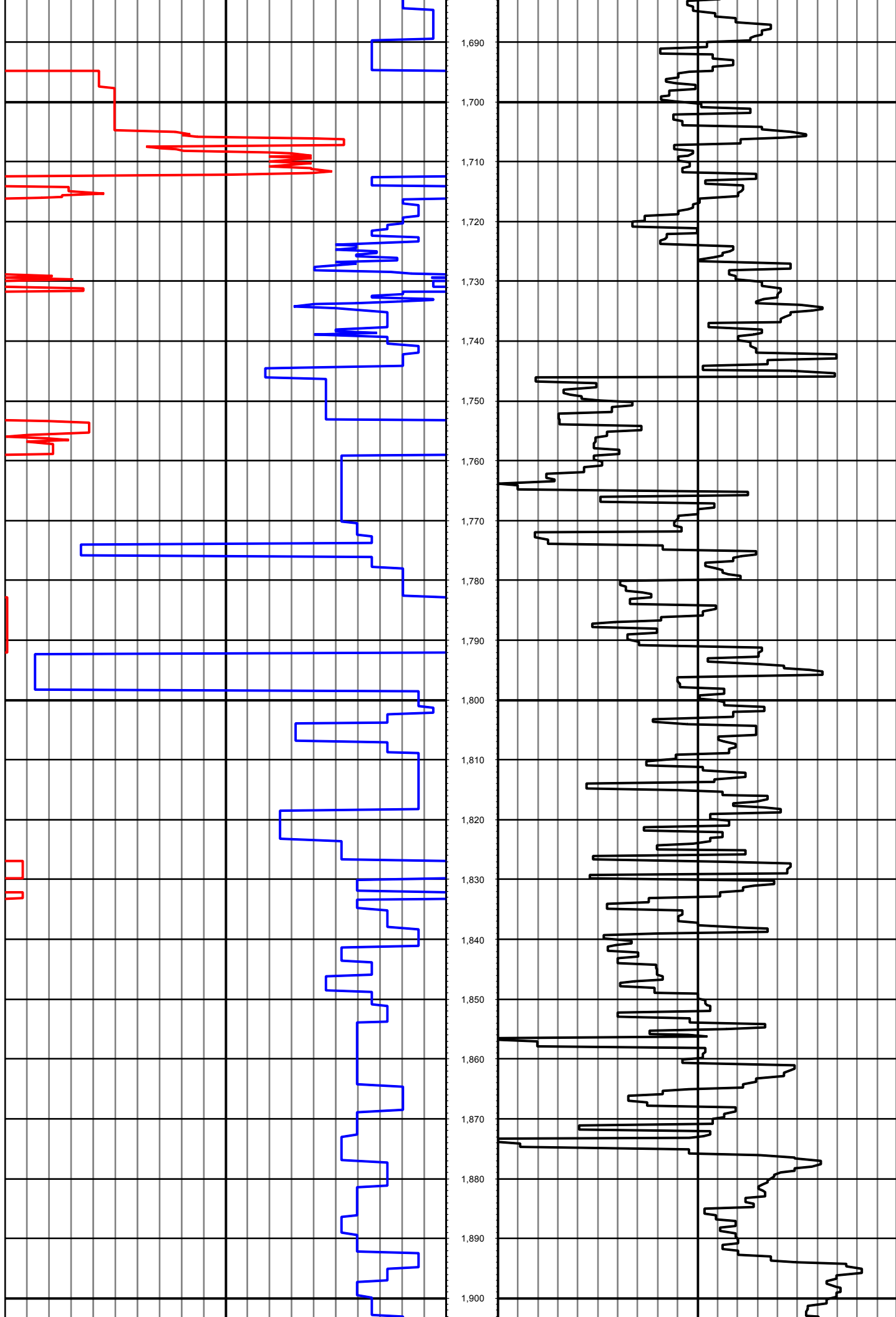
Well: Horsetail 19N-1924M

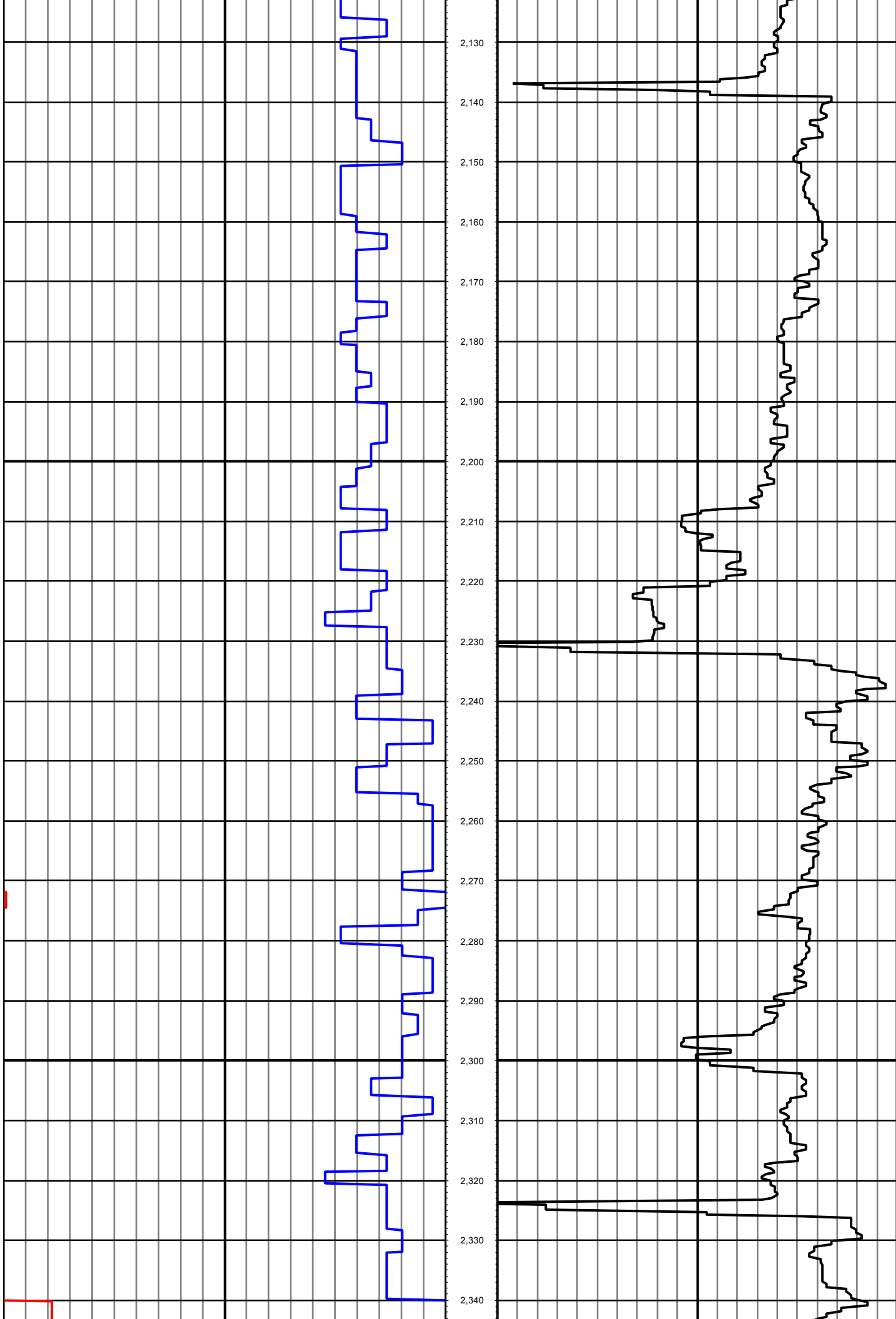
Rig: Pioneer #54

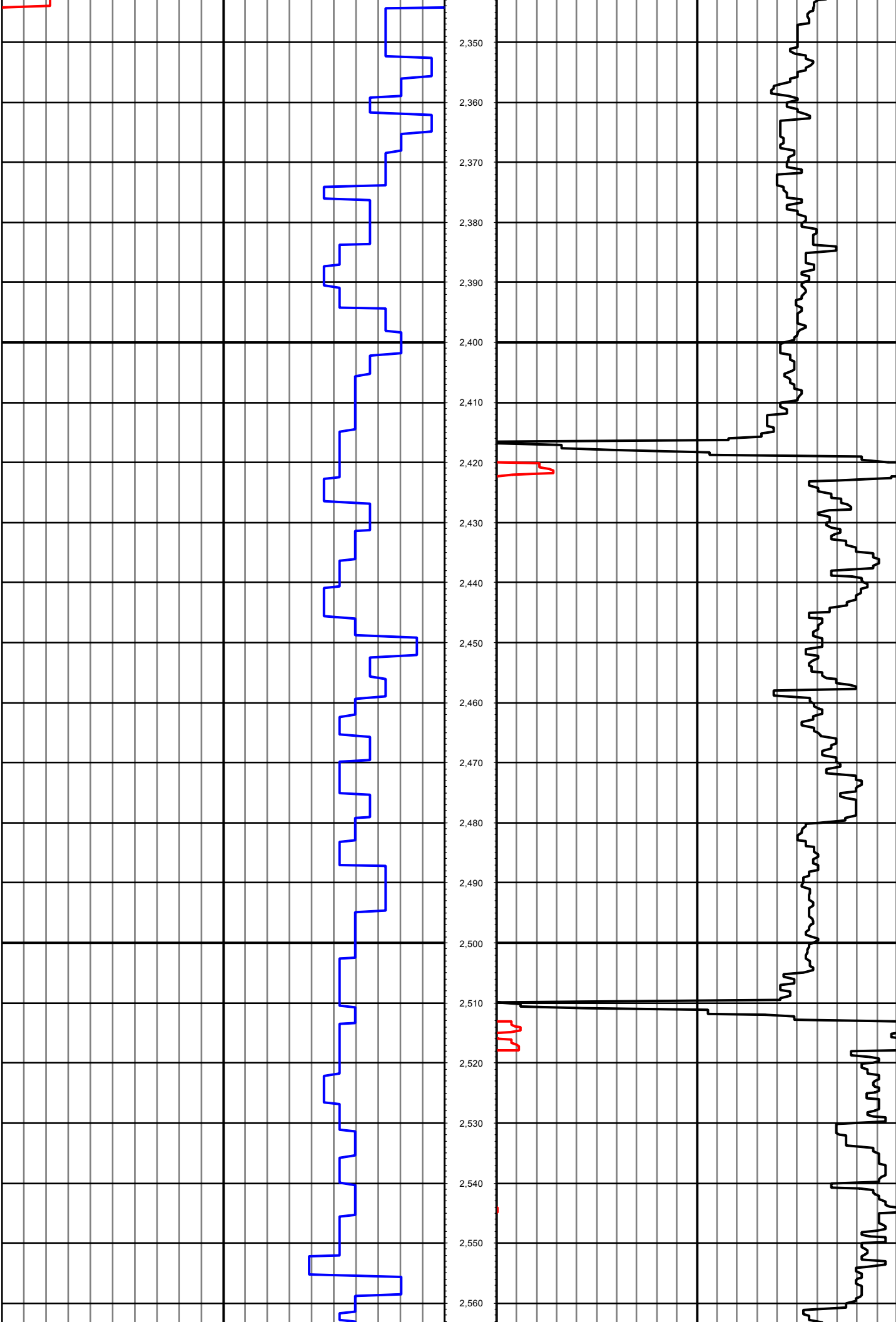
Ended:

All interpretations are opinions based on inferences from electrical or other measurements and we cannot and do not guarantee the accuracy or correctness of any interpretation, and we shall not except in the case of gross or willful negligence on our part, be liable or responsible for any loss, cost damages or expenses incurred or sustained by anyone resulting from an interpretation made by any of our officers, agents, or employees.

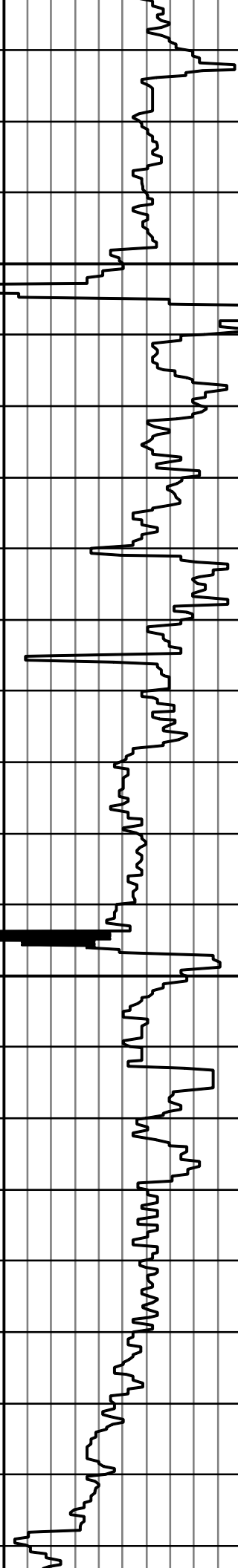
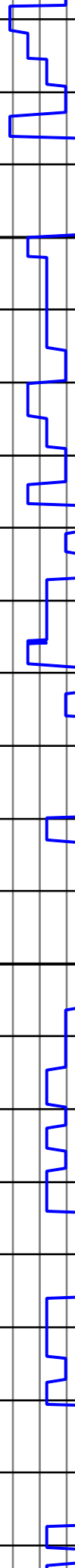


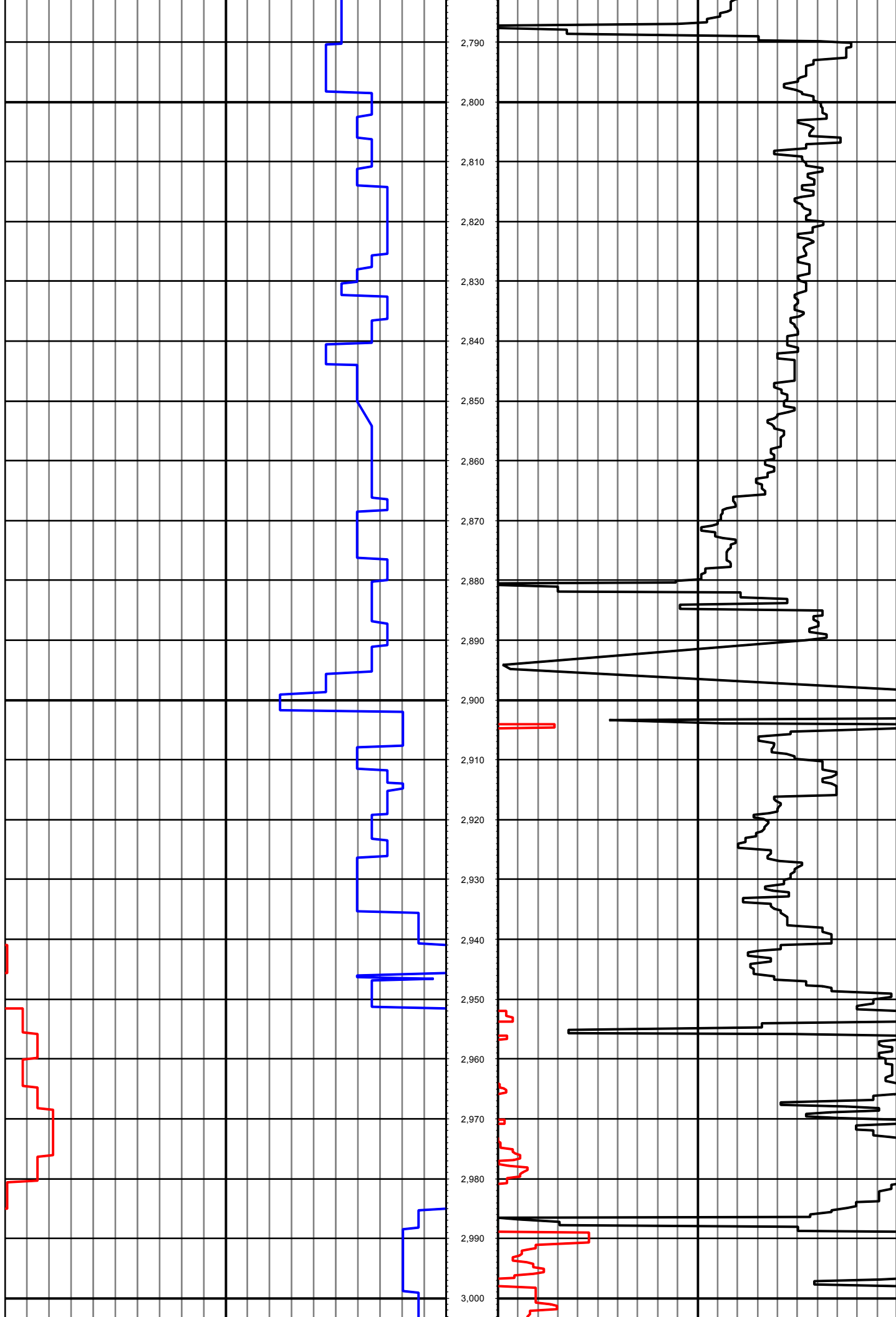


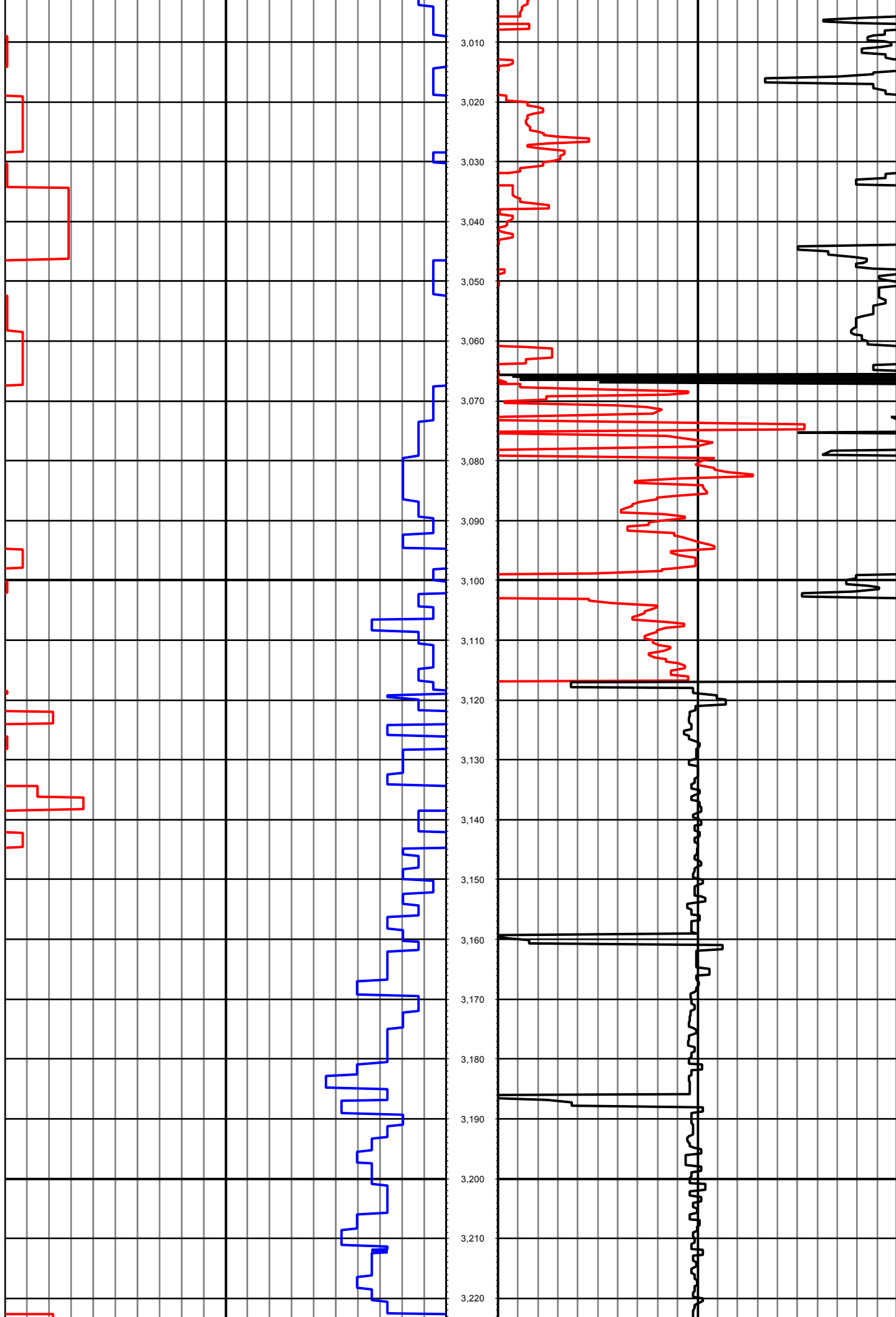


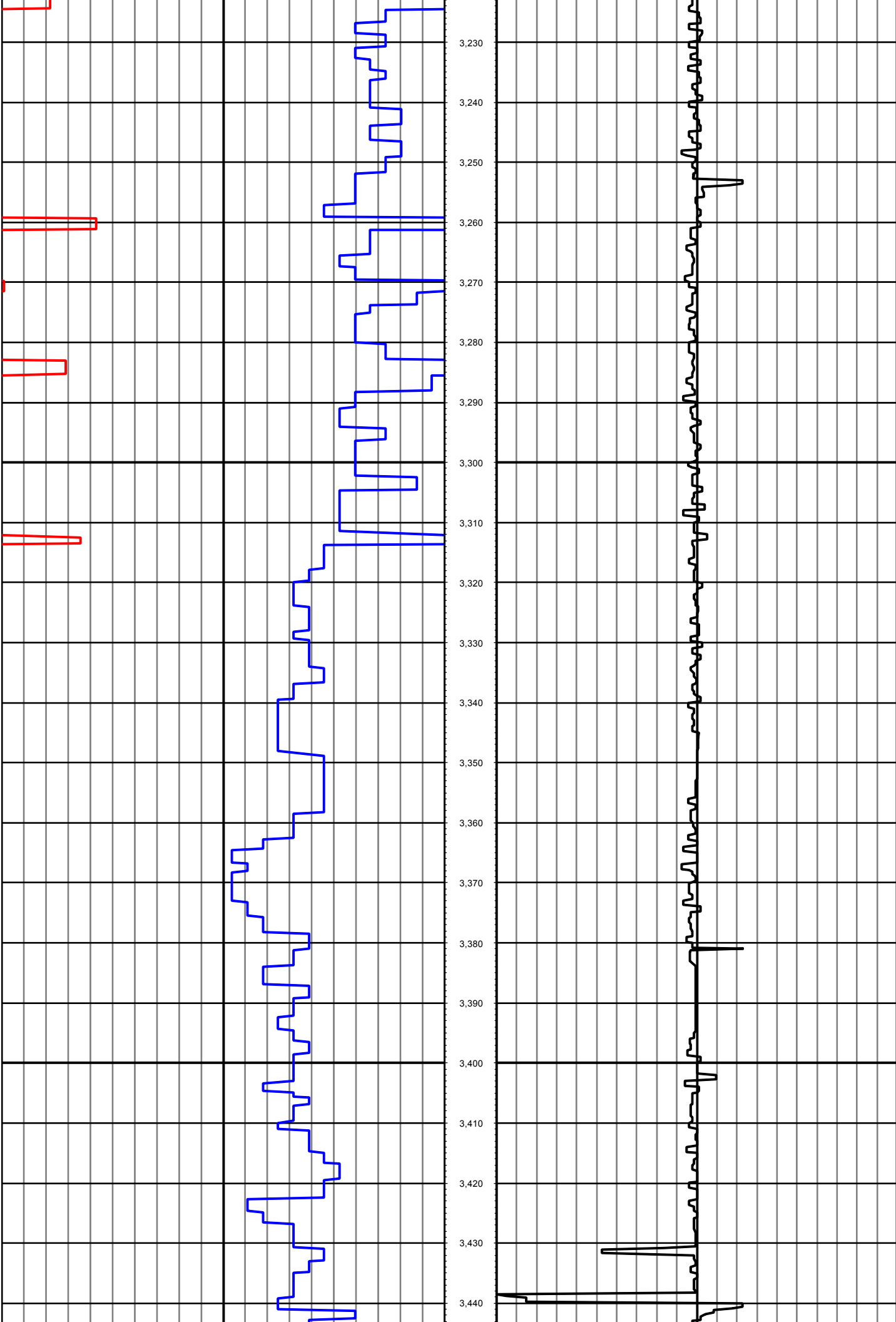


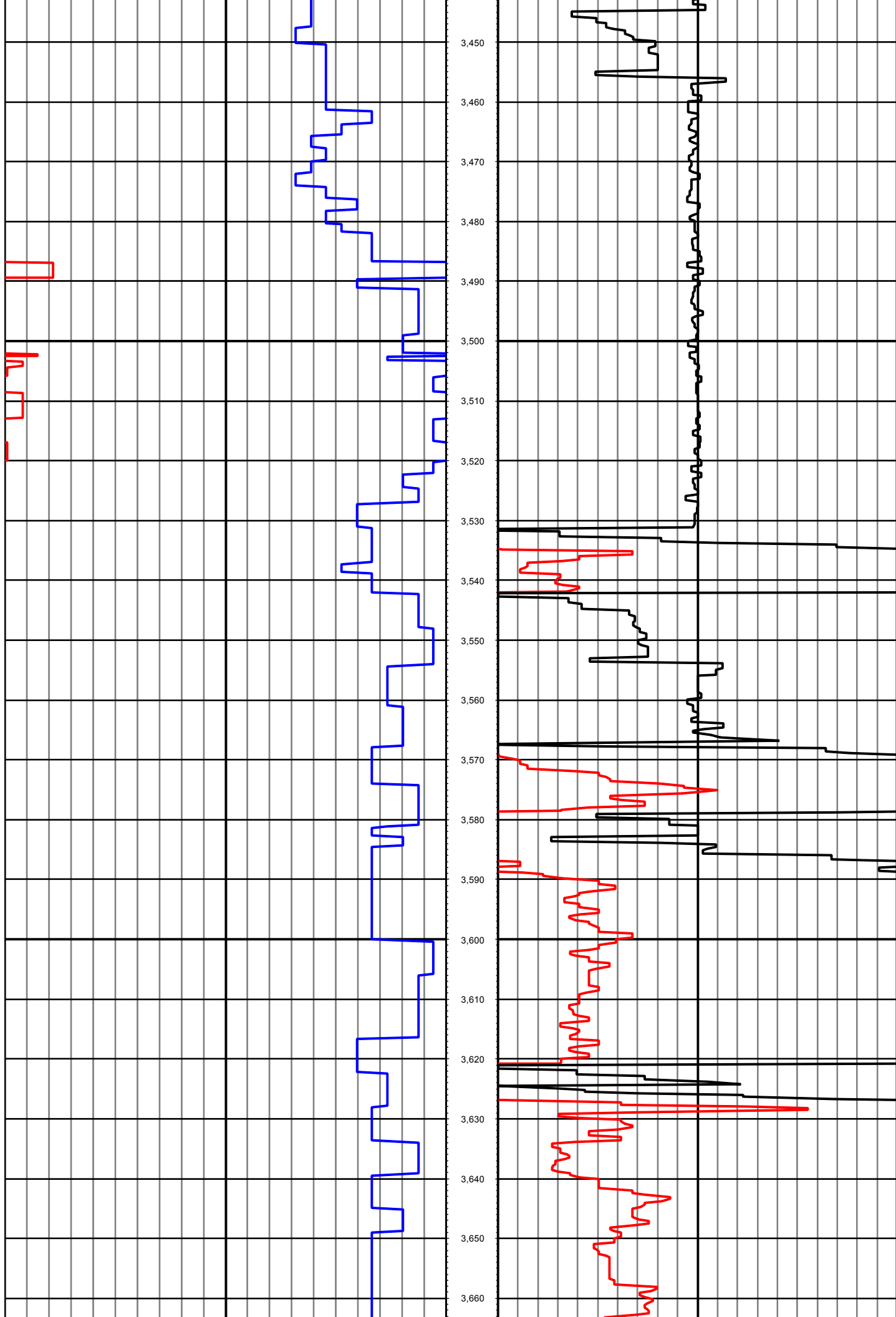
2,570
2,580
2,590
2,600
2,610
2,620
2,630
2,640
2,650
2,660
2,670
2,680
2,690
2,700
2,710
2,720
2,730
2,740
2,750
2,760
2,770
2,780

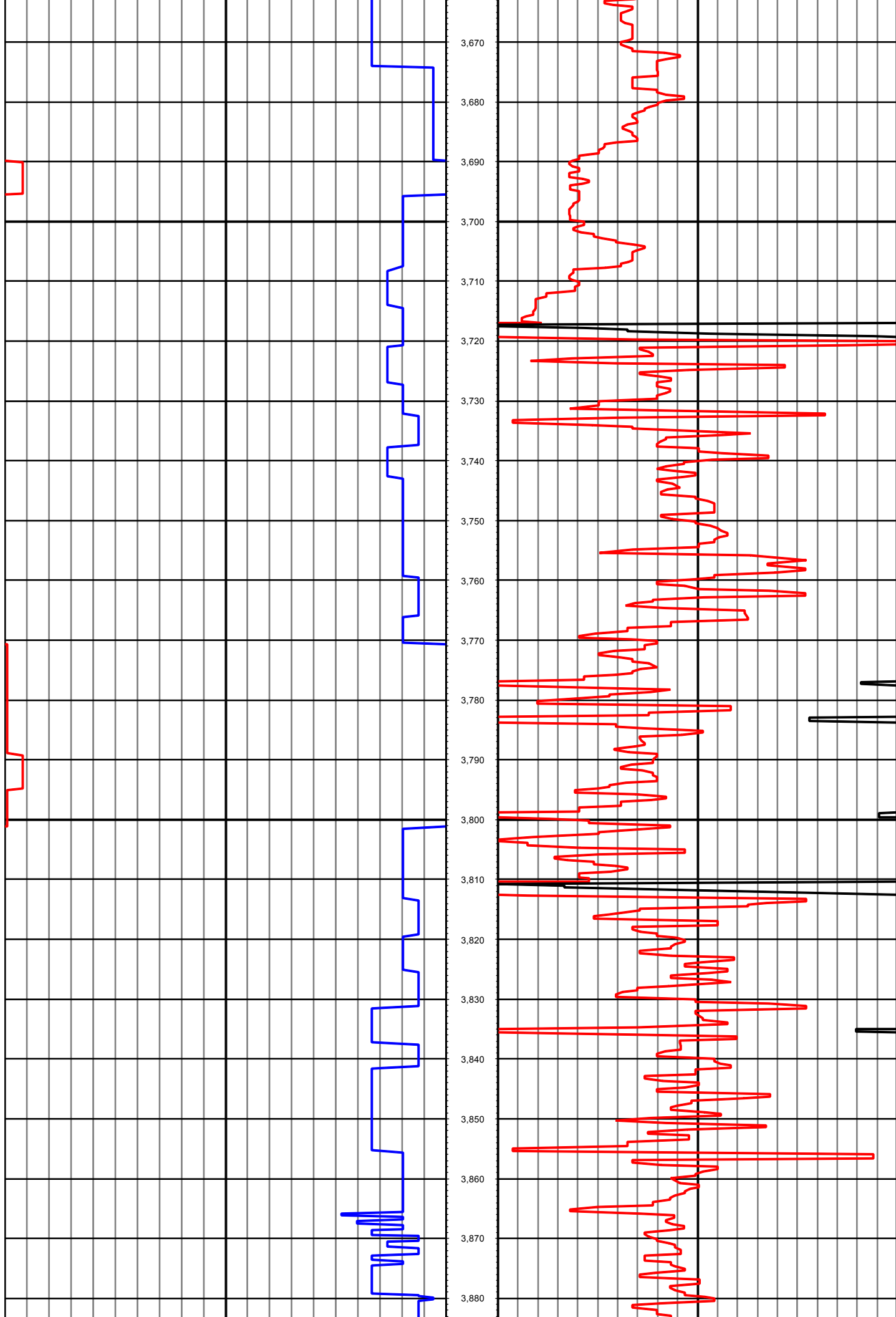


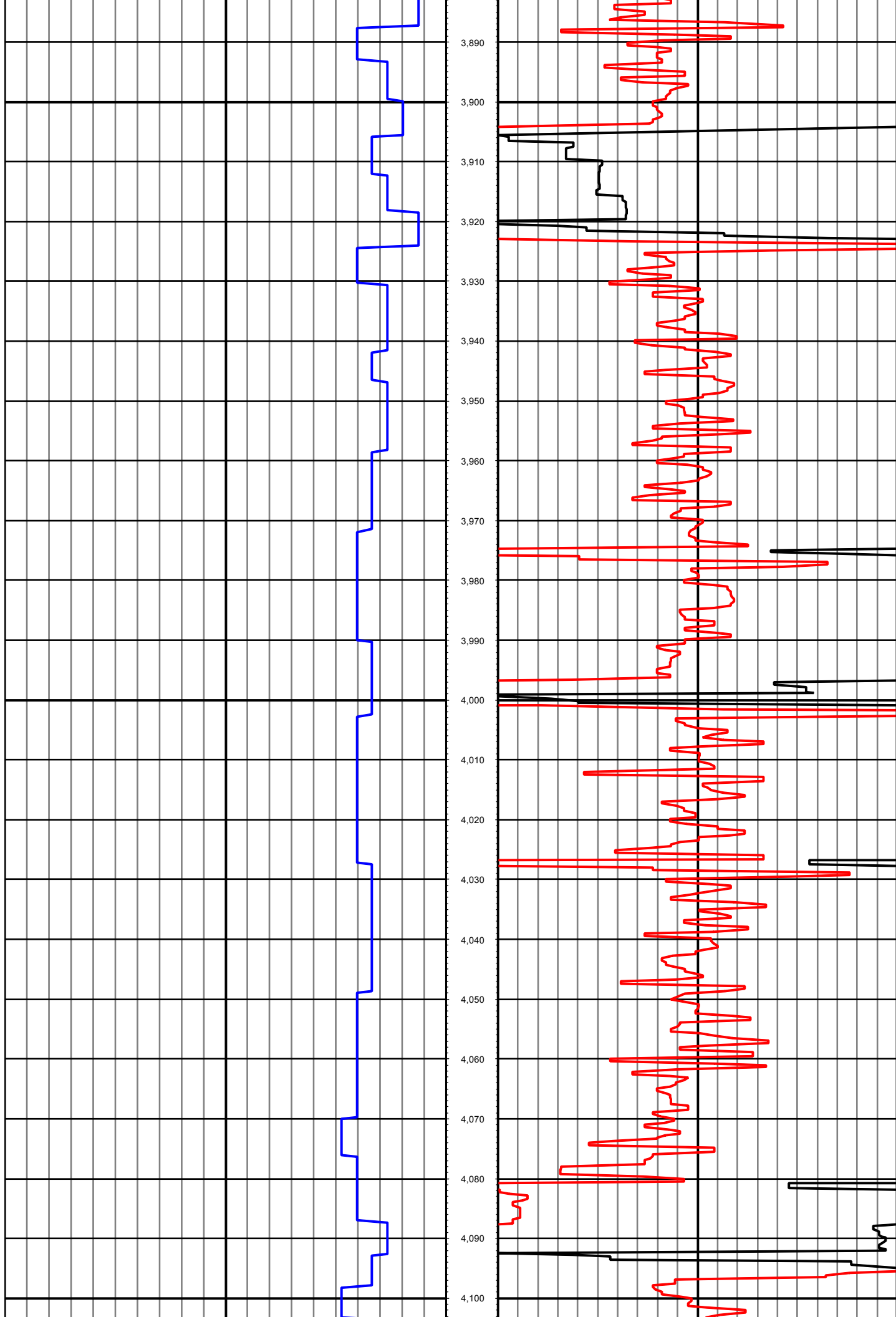


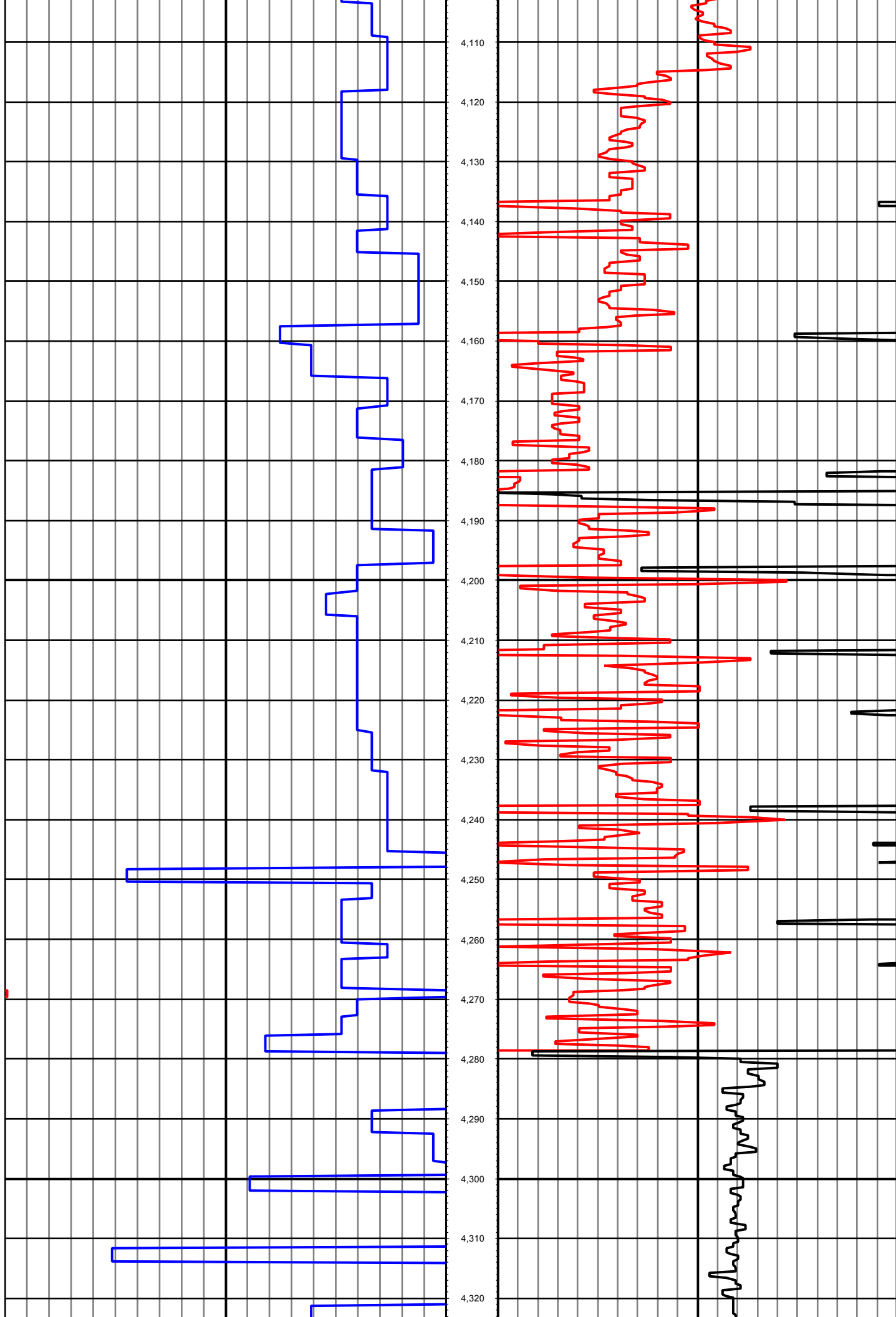


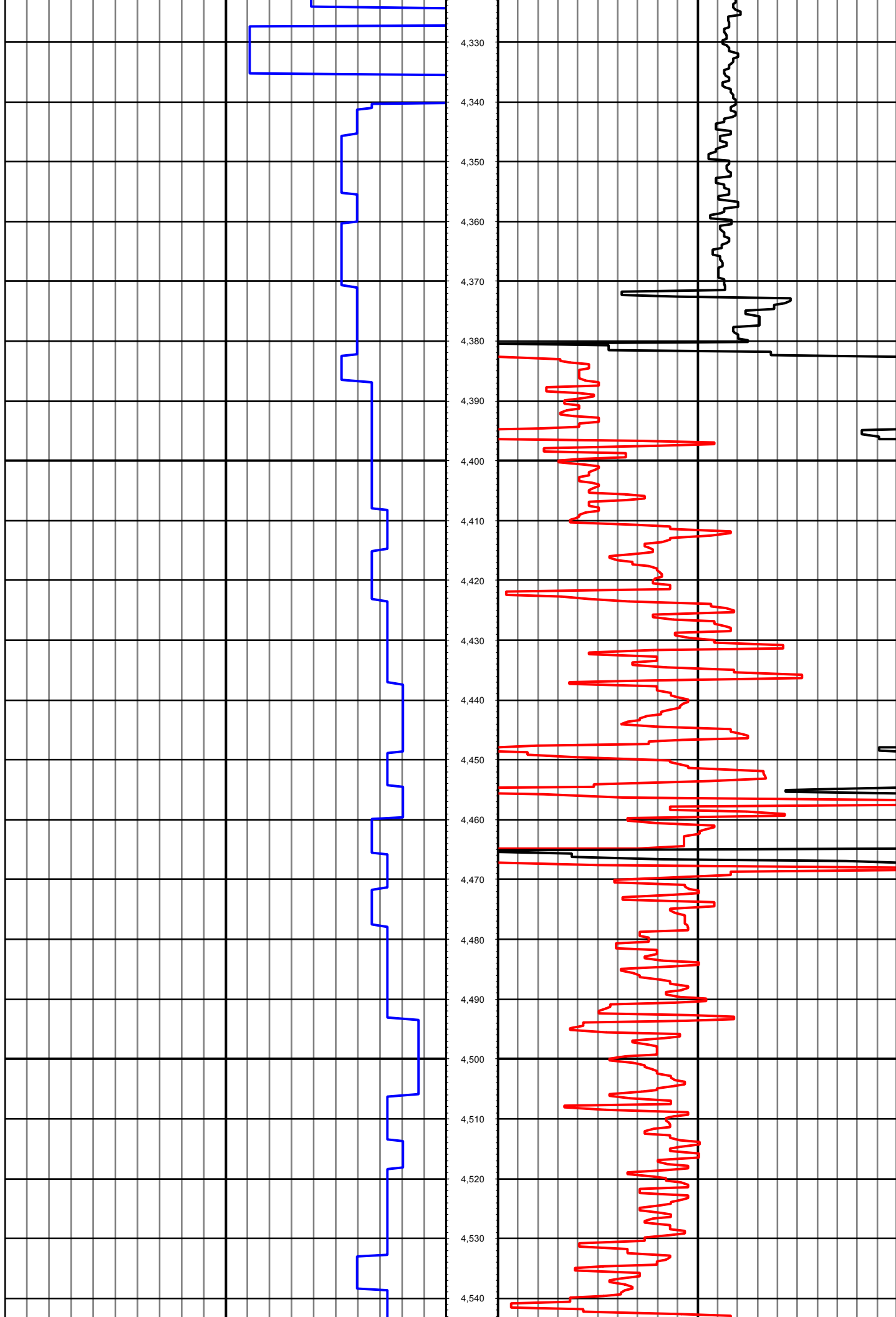


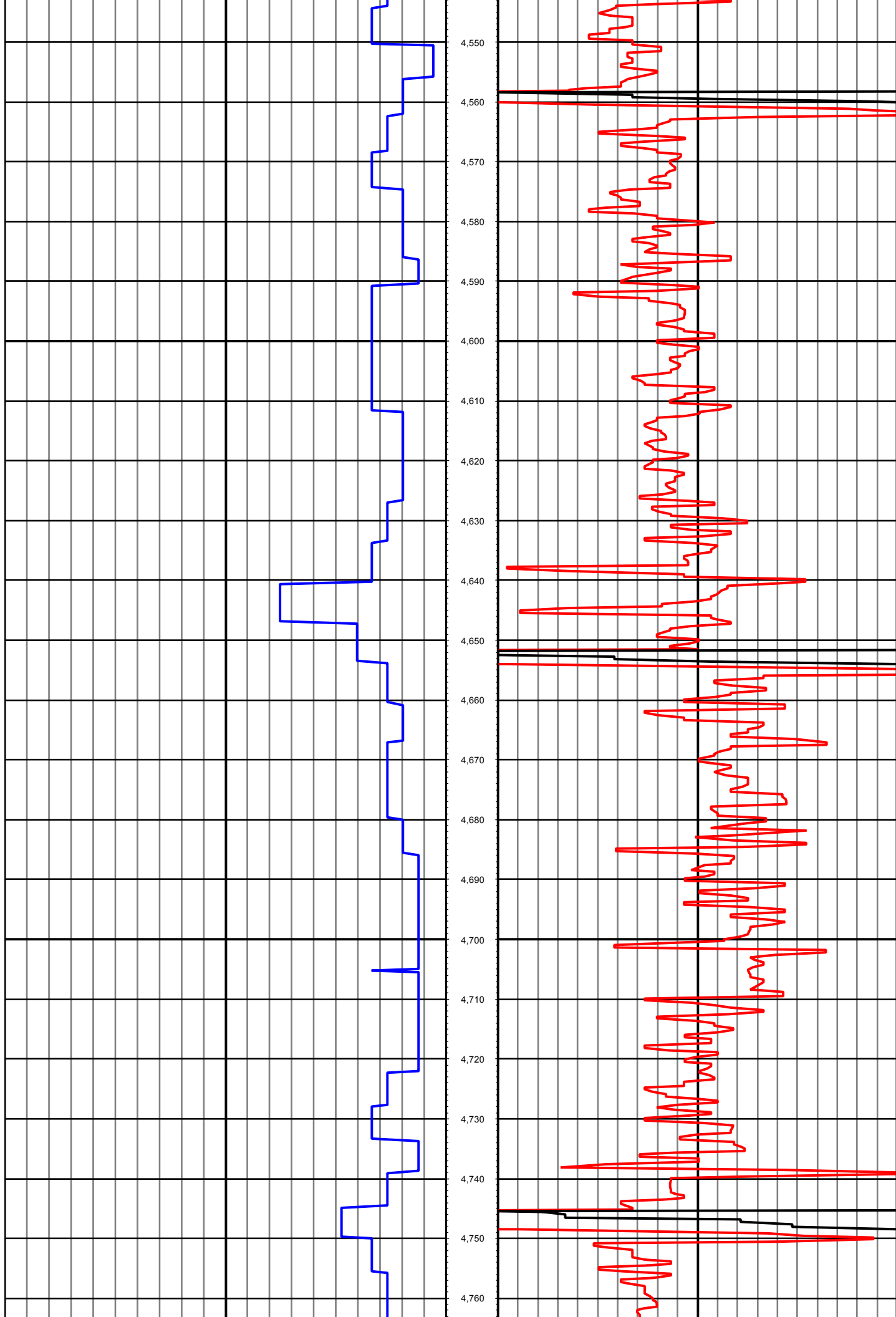


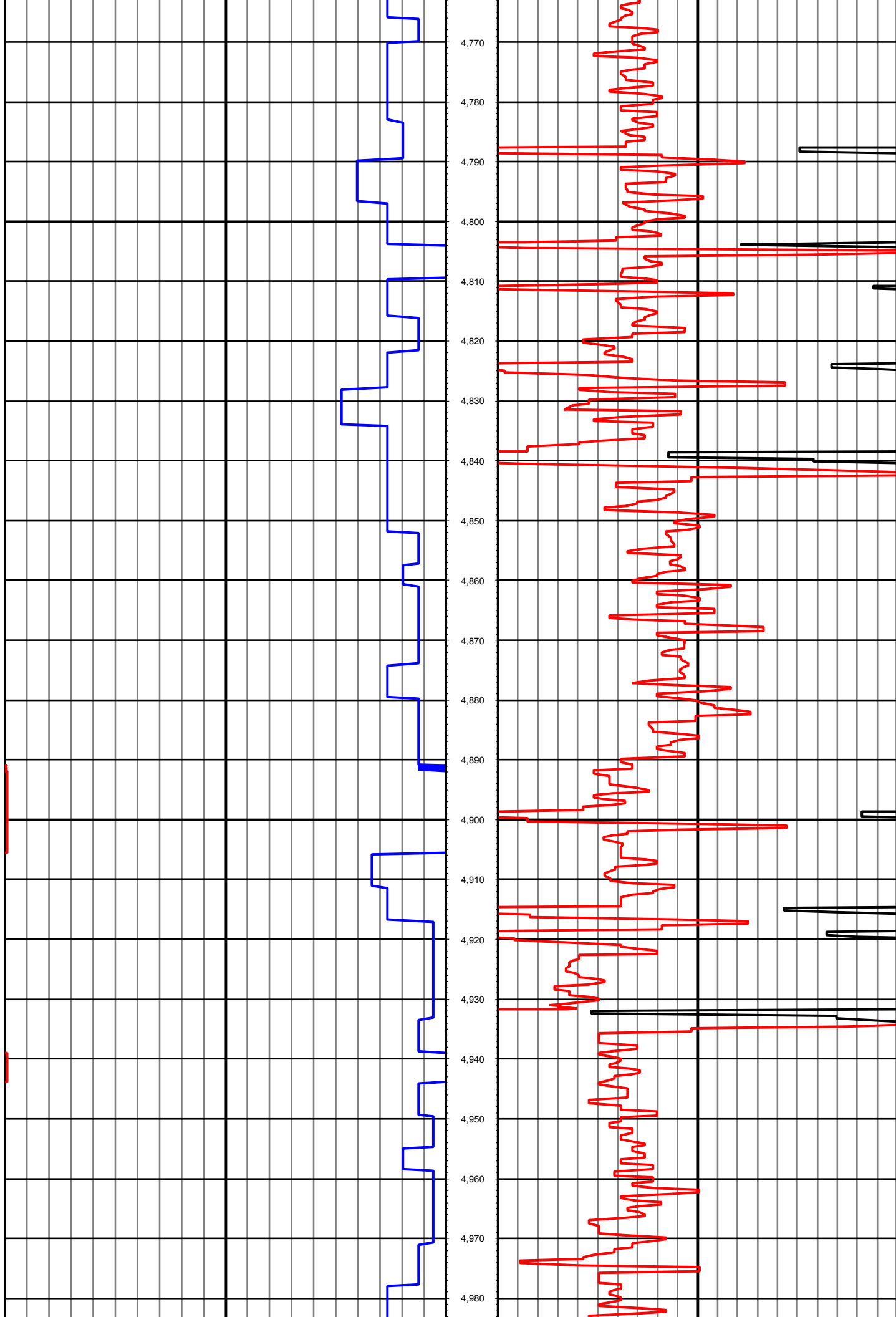


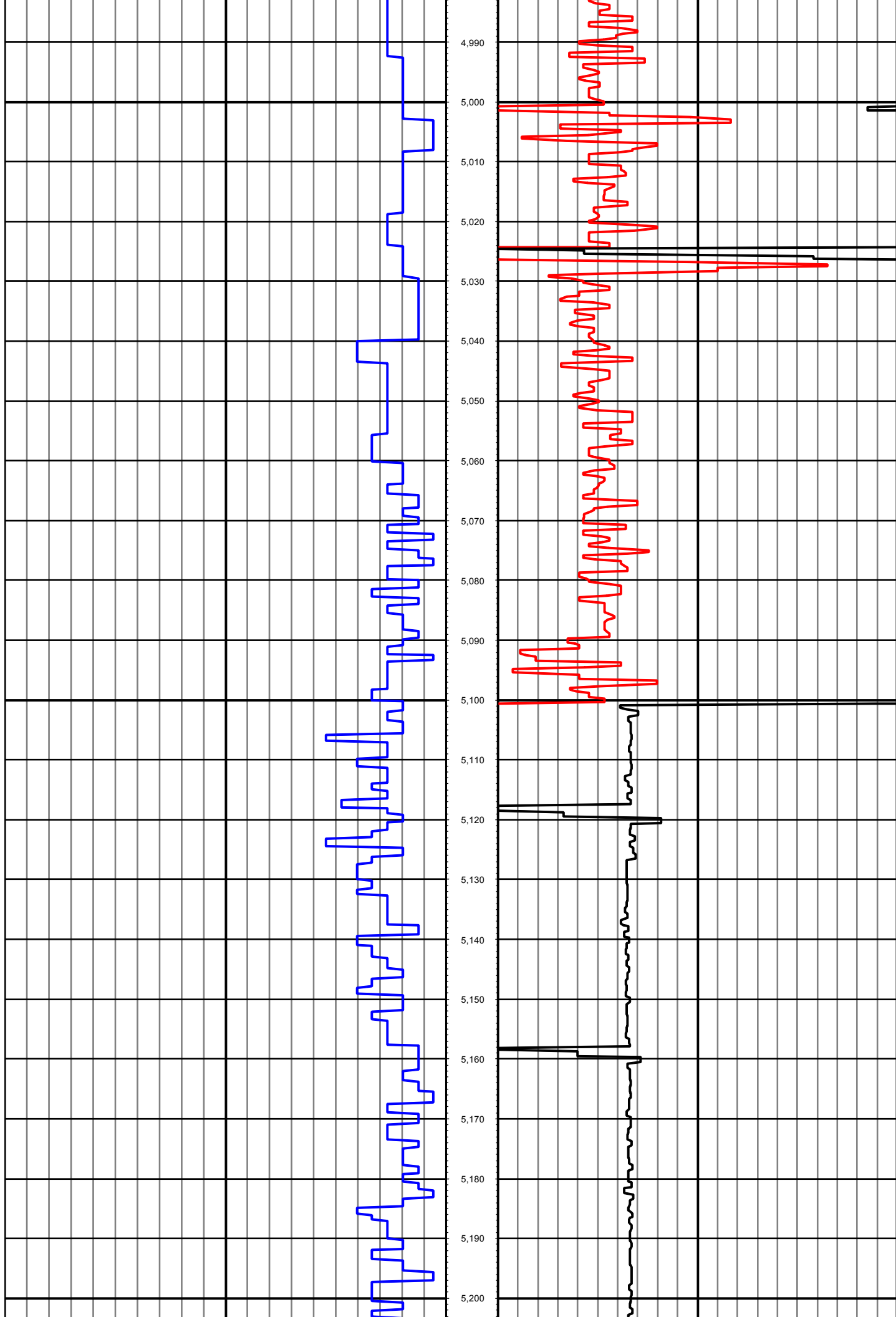


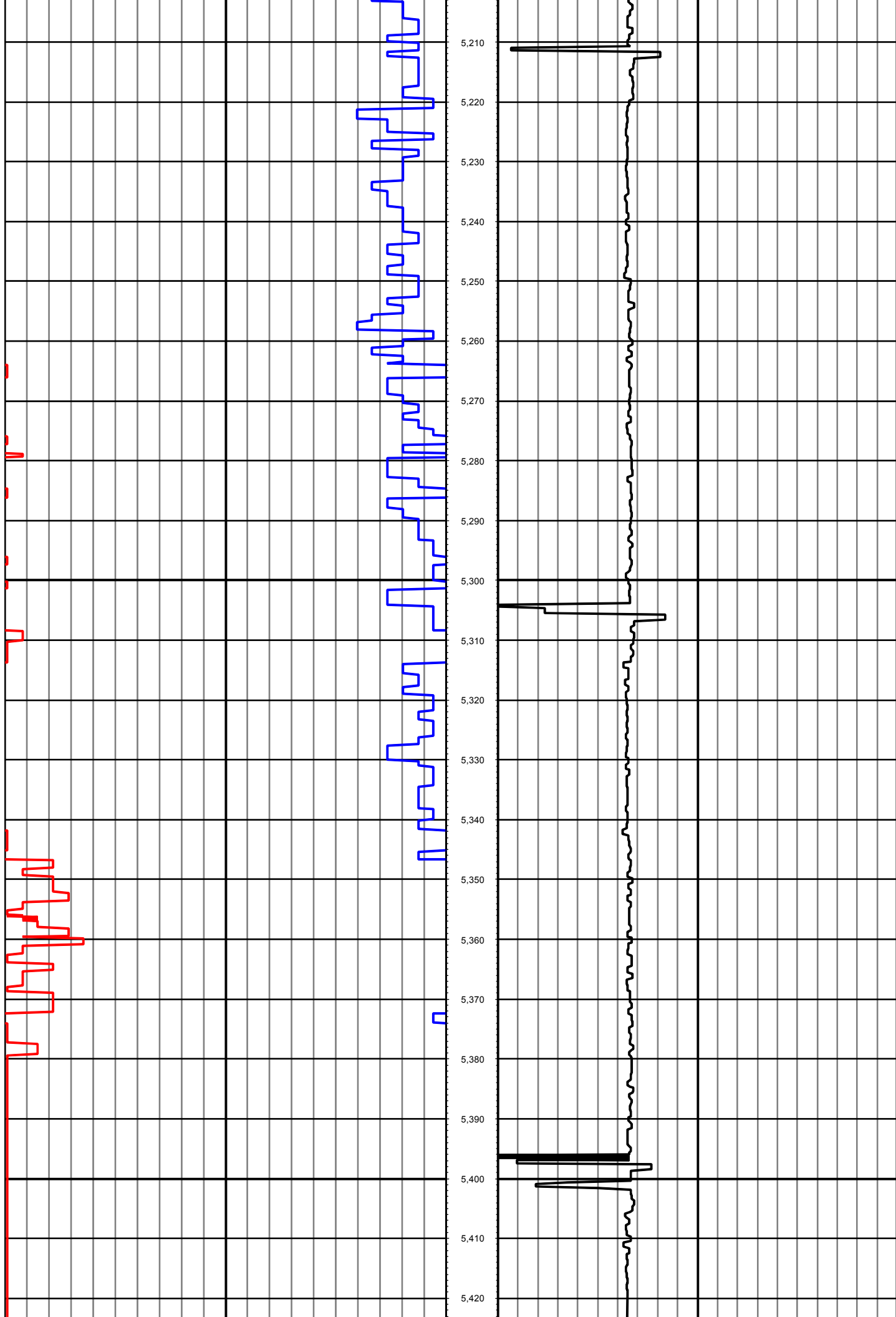












The image shows a blank graph paper with a grid. The vertical axis is labeled with values from 5,430 to 5,640 in increments of 10. The horizontal axis is labeled with values from 0 to 100 in increments of 10. The grid consists of 10 columns and 22 rows. A thick vertical line is drawn at the 50 mark on the horizontal axis. A thick horizontal line is drawn at the 5,500 mark on the vertical axis. The grid lines are thin and black. The axis labels are in a bold, black, sans-serif font.

Horizontal Axis (X)	Vertical Axis (Y)
0	5,430
10	5,430
20	5,430
30	5,430
40	5,430
50	5,430
60	5,430
70	5,430
80	5,430
90	5,430
100	5,430
0	5,440
10	5,440
20	5,440
30	5,440
40	5,440
50	5,440
60	5,440
70	5,440
80	5,440
90	5,440
100	5,440
0	5,450
10	5,450
20	5,450
30	5,450
40	5,450
50	5,450
60	5,450
70	5,450
80	5,450
90	5,450
100	5,450
0	5,460
10	5,460
20	5,460
30	5,460
40	5,460
50	5,460
60	5,460
70	5,460
80	5,460
90	5,460
100	5,460
0	5,470
10	5,470
20	5,470
30	5,470
40	5,470
50	5,470
60	5,470
70	5,470
80	5,470
90	5,470
100	5,470
0	5,480
10	5,480
20	5,480
30	5,480
40	5,480
50	5,480
60	5,480
70	5,480
80	5,480
90	5,480
100	5,480
0	5,490
10	5,490
20	5,490
30	5,490
40	5,490
50	5,490
60	5,490
70	5,490
80	5,490
90	5,490
100	5,490
0	5,500
10	5,500
20	5,500
30	5,500
40	5,500
50	5,500
60	5,500
70	5,500
80	5,500
90	5,500
100	5,500
0	5,510
10	5,510
20	5,510
30	5,510
40	5,510
50	5,510
60	5,510
70	5,510
80	5,510
90	5,510
100	5,510
0	5,520
10	5,520
20	5,520
30	5,520
40	5,520
50	5,520
60	5,520
70	5,520
80	5,520
90	5,520
100	5,520
0	5,530
10	5,530
20	5,530
30	5,530
40	5,530
50	5,530
60	5,530
70	5,530
80	5,530
90	5,530
100	5,530
0	5,540
10	5,540
20	5,540
30	5,540
40	5,540
50	5,540
60	5,540
70	5,540
80	5,540
90	5,540
100	5,540
0	5,550
10	5,550
20	5,550
30	5,550
40	5,550
50	5,550
60	5,550
70	5,550
80	5,550
90	5,550
100	5,550
0	5,560
10	5,560
20	5,560
30	5,560
40	5,560
50	5,560
60	5,560
70	5,560
80	5,560
90	5,560
100	5,560
0	5,570
10	5,570
20	5,570
30	5,570
40	5,570
50	5,570
60	5,570
70	5,570
80	5,570
90	5,570
100	5,570
0	5,580
10	5,580
20	5,580
30	5,580
40	5,580
50	5,580
60	5,580
70	5,580
80	5,580
90	5,580
100	5,580
0	5,590
10	5,590
20	5,590
30	5,590
40	5,590
50	5,590
60	5,590
70	5,590
80	5,590
90	5,590
100	5,590
0	5,600
10	5,600
20	5,600
30	5,600
40	5,600
50	5,600
60	5,600
70	5,600
80	5,600
90	5,600
100	5,600
0	5,610
10	5,610
20	5,610
30	5,610
40	5,610
50	5,610
60	5,610
70	5,610
80	5,610
90	5,610
100	5,610
0	5,620
10	5,620
20	5,620
30	5,620
40	5,620
50	5,620
60	5,620
70	5,620
80	5,620
90	5,620
100	5,620
0	5,630
10	5,630
20	5,630
30	5,630
40	5,630
50	5,630
60	5,630
70	5,630
80	5,630
90	5,630
100	5,630
0	5,640
10	5,640
20	5,640
30	5,640
40	5,640
50	5,640
60	5,640
70	5,640
80	5,640
90	5,640
100	5,640

