



Corporate Office

1775 Sherman Street, #3000
Denver, Colorado 80203
303.860.5800
www.pdce.com

9/2/14

Department of Natural Resources
Oil and Gas Conservation Commission
The Chancery Building
Attn: Matt Lepore
1120 Lincoln St., Suite 801
Denver, CO 80203

Re: **30 Day Certification Letter – Rule 318Ae**
Hankins 20R-403
NWNE Sec 20–T5N-R67W, 6th PM
Weld County, Colorado

Dear Director,

PDC Energy, Inc. ("PDC") hereby certifies to the Director that a thirty (30-day) notice has been given by certified mail to all owners in the proposed wellbore spacing unit consisting of the E2 of Section 20 in T5N R67W, 320 acres. We have not received any objections to such well location or proposed spacing unit, therefore, PDC hereby requests the Director to approve the well.

If you should have any questions or concerns regarding this permit, please contact the undersigned at (303) 860-5800.

Sincerely,

A handwritten signature in blue ink that reads "Julie Webb".

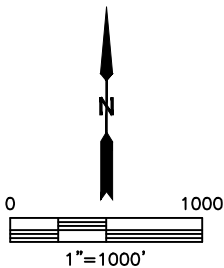
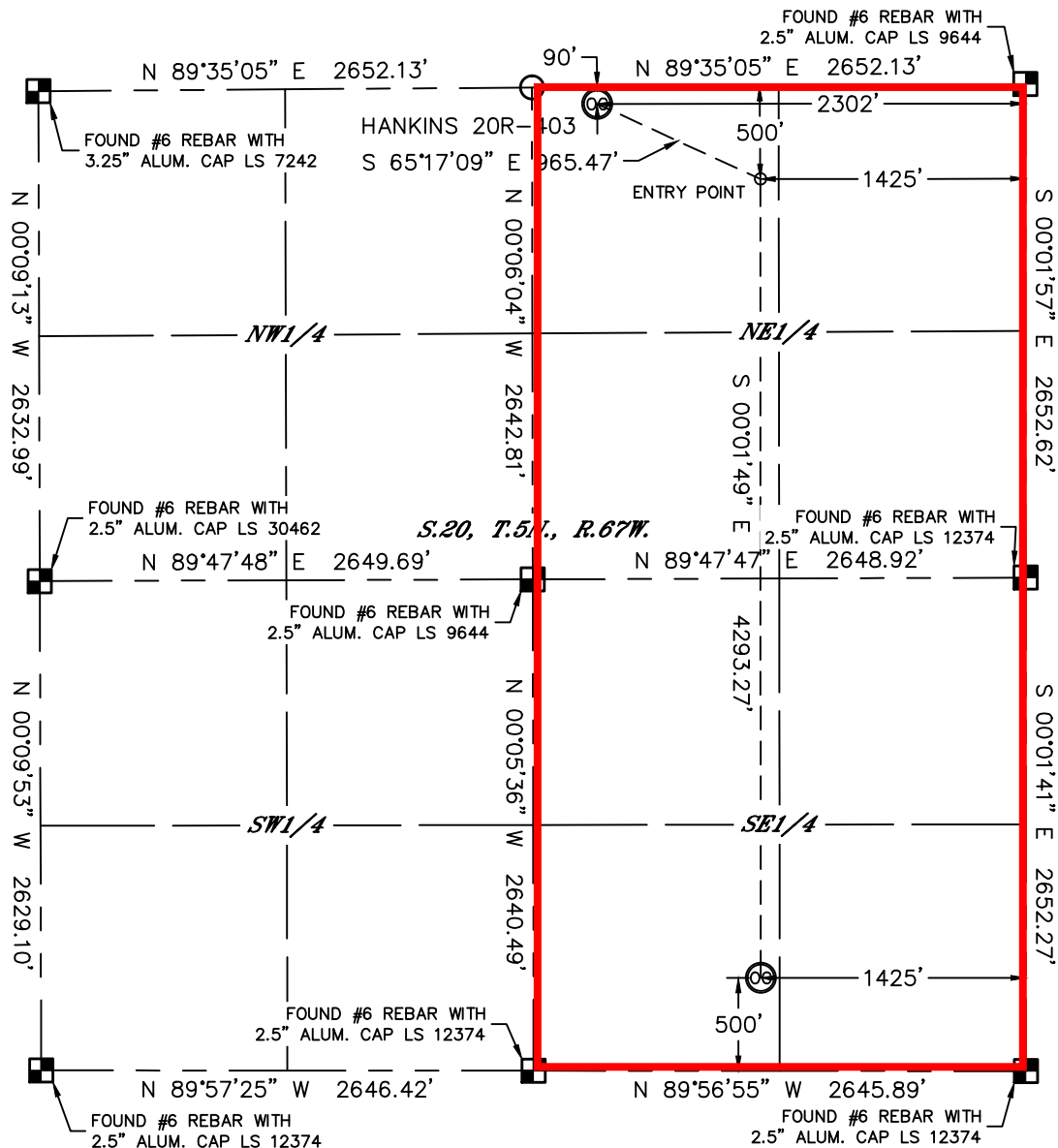
Julie Webb
Regulatory Analyst
PDC Energy

Lat40°, Inc. 1635 Foxtrail Drive, Suite 325 Loveland, CO 970-776-3321

WELL LOCATION CERTIFICATE

THIS MAP DOES NOT REPRESENT A BOUNDARY SURVEY

SECTION: 20
TOWNSHIP: 5N
RANGE: 67W



In accordance with a request from JEFF DILLINGHAM with PDC ENERGY Lat40', Inc. has determined the surface location of the HANKINS 20R-403 to be 90' from the NORTH line and 2302' from the EAST line and the bottom hole to be 500' from the SOUTH line and 1425' from the EAST line as measured at right angles from the section lines of Section 20, Township 5 North, Range 67 West of the Sixth Principal Meridian, County of Weld, State of Colorado.

I hereby state that this Well Location Certificate was prepared by me, or under my direct supervision, that the fieldwork was completed on 7/25/2014, for and on behalf of PDC ENERGY. That this is not a Land Survey Plat or an Improvement Survey Plat, and that it is not to be relied upon for establishment of fence, building, or other future improvement lines.

SURFACE LOCATION

LAT: 40.39213°N
LONG: 104.91566°W
PDOP: 1.8
ELEV: 4958'
1/4,1/4: NWNE


BOTTOM HOLE

LAT: 40.37923°N
LONG: 104.91262°W

ENTRY POINT

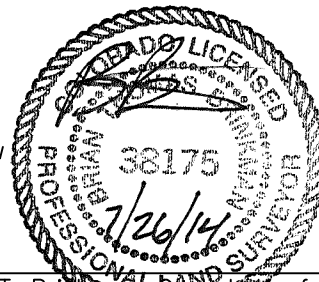
LAT: 40.39101°N
LONG: 104.91252°W

LEGEND



 = ALIQUOT MONUMENT AS DESCRIBED
 = CALCULATED POSITION

Brian T. Brinkman, on behalf of Lat40°, Inc.
Colorado Licensed Professional Land Surveyor No. 38175
DATE: 7/26/2014
PROJECT#: 2014111

DATE: 7/26/2014
PROJECT#: 2014111



NOTE:

- 1) Bearings shown are Grid Bearings of the Colorado State Plane Coordinate System, North Zone, North American Datum 1983. The lineal dimensions as contained herein are based upon the "U.S. Survey Foot."
- 2) Ground elevations are based on an observed GPS elevation (NAVD 1988 DATUM).
- 3) IMPROVEMENTS: See LOCATION DRAWING for all visible improvements within 500' of disturbed area.
- 4) SURFACE USE: CROPLAND
- 5) INSTRUMENT OPERATOR: BRIAN ROTTINGHAUS
- 6) NEAREST CULTURAL ITEMS:
BUILDING: ±1441' NE
BUILDING UNIT: ±1667' NE
HIGH OCCUPANCY BUILDING UNIT: 5280'+
DESIGNATED OUTSIDE ACTIVITY AREA: 5280'+
PUBLIC ROAD: ±1210' SW (COYOTE RIDGE DR.)
- ABOVEGROUND UTILITY: ±988' SE
- RAILROAD: ±4245' SW
- PROPERTY LINE: ±90' N
- LEGEND
-  = ALIQUOT MONUMENT AS DE
-  = CALCULATED POSITION