

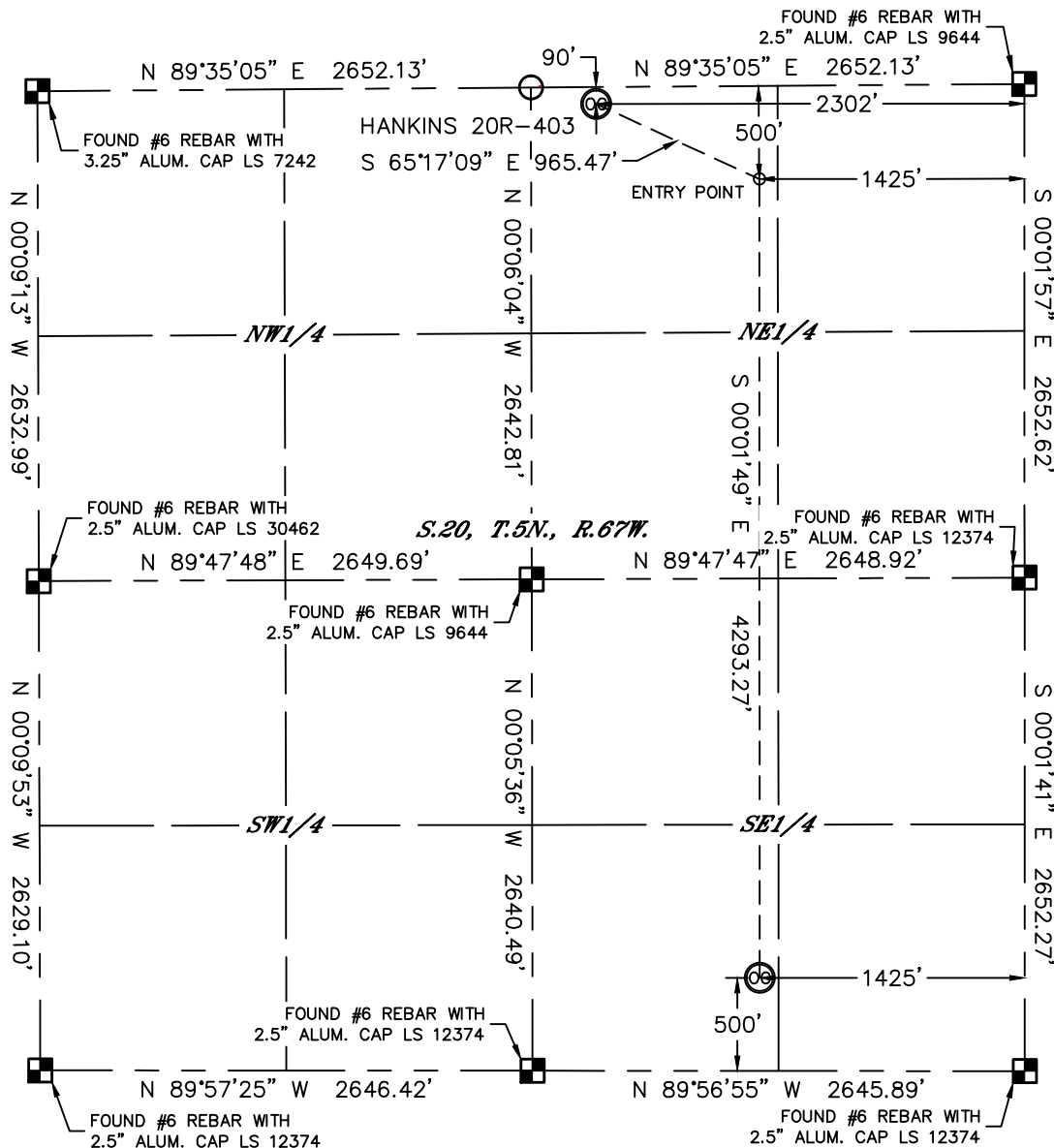


Lat40°, Inc. 1635 Foxtrail Drive, Suite 325 Loveland, CO 970-776-3321

WELL LOCATION CERTIFICATE

THIS MAP DOES NOT REPRESENT A BOUNDARY SURVEY

SECTION: 20
TOWNSHIP: 5N
RANGE: 67W



In accordance with a request from JEFF DILLINGHAM with PDC ENERGY Lat40°, Inc. has determined the surface location of the HANKINS 20R-403 to be 90' from the NORTH line and 2302' from the EAST line and the bottom hole to be 500' from the SOUTH line and 1425' from the EAST line as measured at right angles from the section lines of Section 20, Township 5 North, Range 67 West of the Sixth Principal Meridian, County of Weld, State of Colorado.

I hereby state that this Well Location Certificate was prepared by me, or under my direct supervision, that the fieldwork was completed on 7/25/2014, for and on behalf of PDC ENERGY. That this is not a Land Survey Plat or an Improvement Survey Plat, and that it is not to be relied upon for establishment of fence, building, or other future improvement lines.

SURFACE LOCATION

LAT: 40.39213°N
LONG: 104.91566°W
PDOP: 1.8
ELEV: 4958'
1/4,1/4: NWNE

BOTTOM HOLE

LAT: 40.37923°N
LONG: 104.91262°W

ENTRY POINT

LAT: 40.39101°N
LONG: 104.91252°W

LEGEND

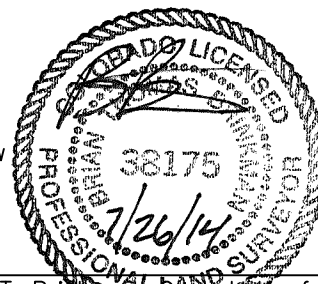
- = ALIQUOT MONUMENT AS DESCRIBED
- = CALCULATED POSITION

Brian T. Brinkman, on behalf of Lat40°, Inc.
Colorado Licensed Professional
Land Surveyor No. 38175

DATE: 7/26/2014
PROJECT#: 2014111

NOTE:

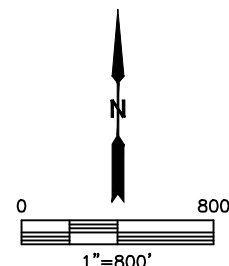
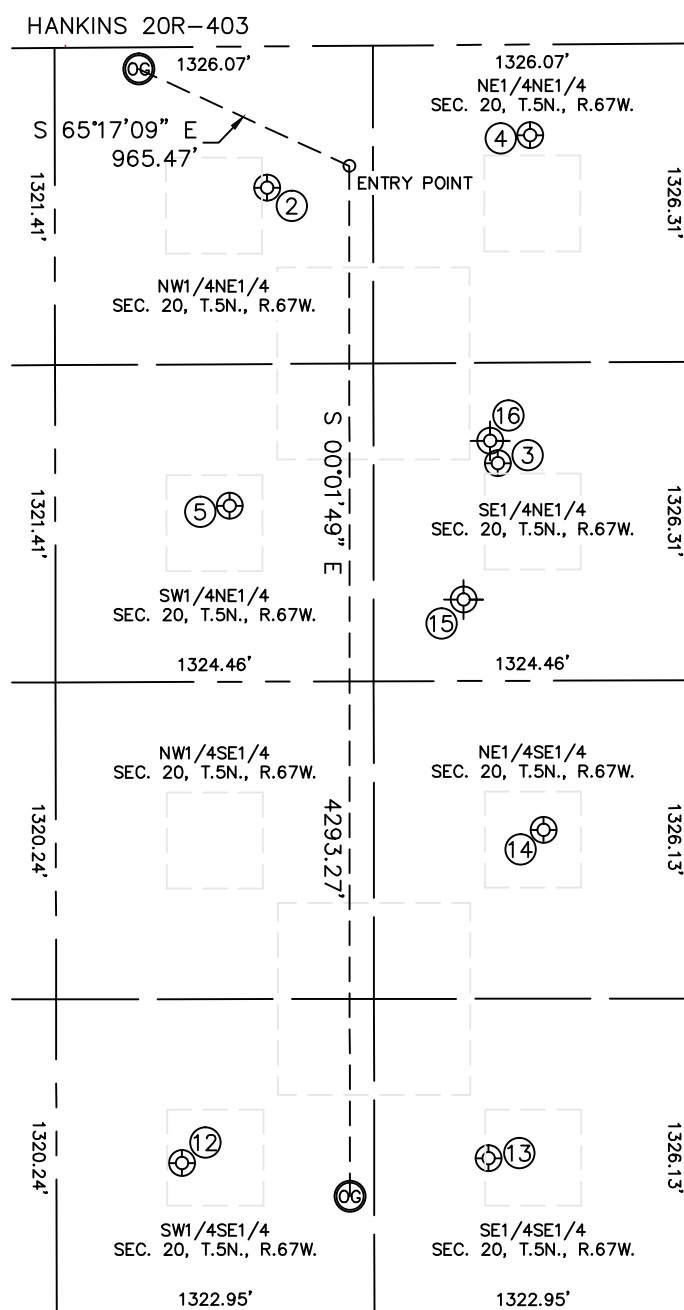
- 1) Bearings shown are Grid Bearings of the Colorado State Plane Coordinate System, North Zone, North American Datum 1983. The lined dimensions as contained herein are based upon the "U.S. Survey Foot."
- 2) Ground elevations are based on an observed GPS elevation (NAVD 1988 DATUM).
- 3) IMPROVEMENTS: See LOCATION DRAWING for all visible improvements within 500' of disturbed area.
- 4) SURFACE USE: CROPLAND
- 5) INSTRUMENT OPERATOR: BRIAN ROTTINGHAUS
- 6) NEAREST CULTURAL ITEMS:
BUILDING: ±1441' NE
BUILDING UNIT: ±1667' NE
HIGH OCCUPANCY BUILDING UNIT: 5280'+
DESIGNATED OUTSIDE ACTIVITY AREA: 5280'+
PUBLIC ROAD: ±1210' SW (COYOTE RIDGE DR.)
ABOVEGROUND UTILITY: ±988' SE
RAILROAD: ±4245' SW
PROPERTY LINE: ±90' N



SITE SKETCH

HANKINS 20R-403

SECTION: 20
TOWNSHIP: 5N
RANGE: 67W



WELL NO.	WELL NAME	SHL FOOTAGE				SHL LAT°	SHL LONG°	PDOP	ELEV (FT.)	1/4/1/4
2	HANKINS 4	588	FNL	1768	FEL	40.39077	-104.91375	2.0	4941	NWNE
3	HANKINS 42-20	1743	FNL	808	FEL	40.38760	-104.91033	2.2	4915	SENE
4	HANKINS 3	379	FNL	672	FEL	40.39134	-104.90982	2.1	4948	NENE
5	HANKINS 5	1913	FNL	1924	FEL	40.38713	-104.91434	1.7	4913	SWNE
12	CROISSANT(FARMOIL) 2	639	FSL	2124	FEL	40.37962	-104.91512	1.5	4868	SWSE
13	HANKINS 44-20U	660	FSL	848	FEL	40.37965	-104.91054	1.9	4911	SESE
14	HANKINS 43-20U	2027	FSL	618	FEL	40.38340	-104.90969	1.9	4897	NESE
15	PANSY P HANKINS #2	2310	FNL	950	FEL	40.38594	-104.91083	N/A	4902	SENE
16	PANSY P HANKINS #1	1650	FNL	840	FEL	40.38775	-104.91041	N/A	4919	SENE

NOTE: THE ABANDONED WELL DATA SHOWN IN RED ABOVE WAS OBTAINED FROM COGCC SCOUT CARDS.

DATE: 7/26/2014
PROJECT#: 2014111