

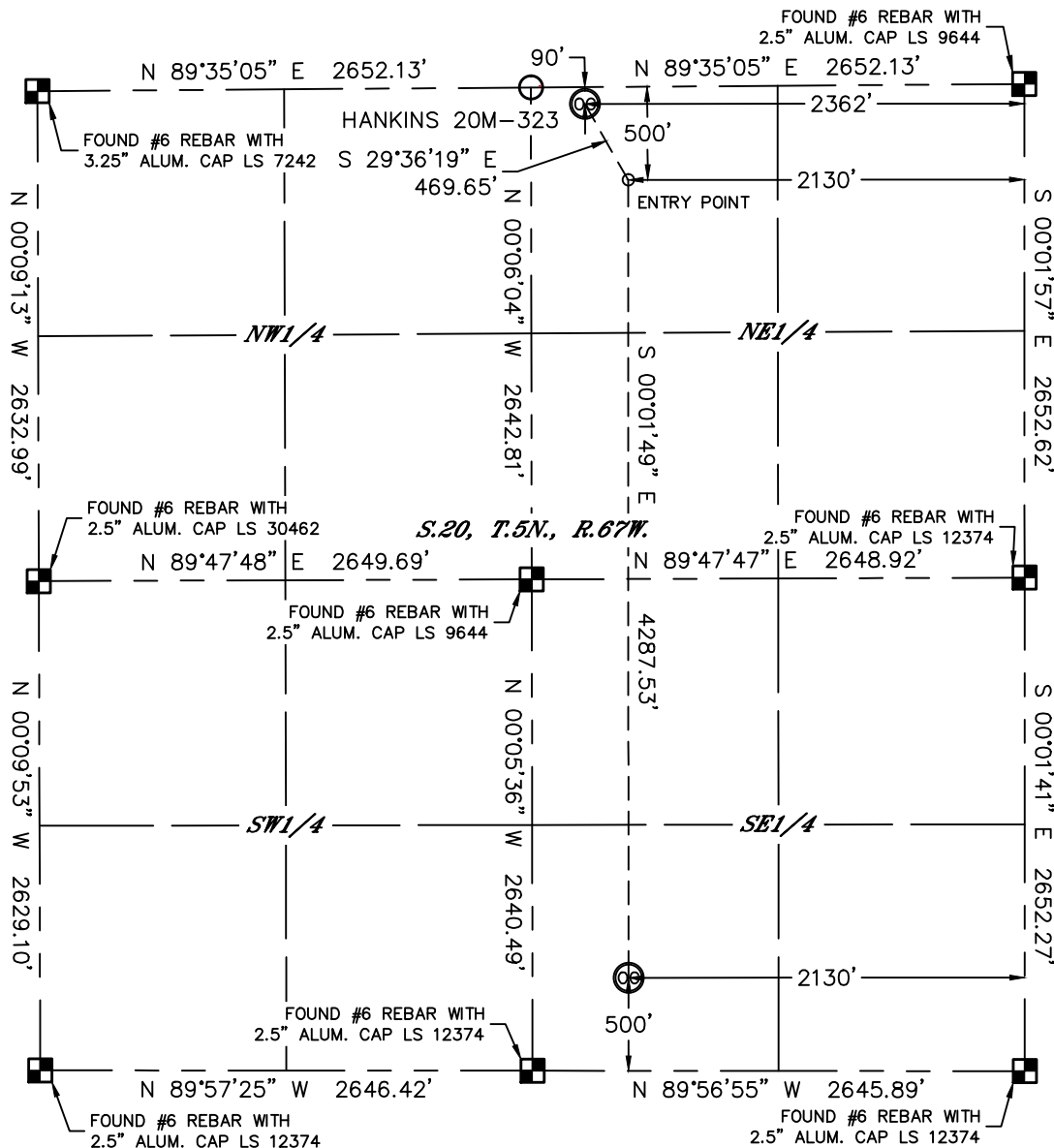


Lat40°, Inc. 1635 Foxtrail Drive, Suite 325 Loveland, CO 970-776-3321

WELL LOCATION CERTIFICATE

THIS MAP DOES NOT REPRESENT A BOUNDARY SURVEY

SECTION: 20
TOWNSHIP: 5N
RANGE: 67W



In accordance with a request from JEFF DILLINGHAM with PDC ENERGY Lat40°, Inc. has determined the surface location of the HANKINS 20M-323 to be 90' from the NORTH line and 2362' from the EAST line and the bottom hole to be 500' from the SOUTH line and 2130' from the EAST line as measured at right angles from the section lines of Section 20, Township 5 North, Range 67 West of the Sixth Principal Meridian, County of Weld, State of Colorado.

I hereby state that this Well Location Certificate was prepared by me, or under my direct supervision, that the fieldwork was completed on 7/25/2014, for and on behalf of PDC ENERGY. That this is not a Land Survey Plat or an Improvement Survey Plat, and that it is not to be relied upon for establishment of fence, building, or other future improvement lines.

SURFACE LOCATION

LAT: 40.39213°N
LONG: 104.91587°W
PDOP: 1.8
ELEV: 4959'
1/4,1/4: NWNE

BOTTOM HOLE

LAT: 40.37924°N
LONG: 104.91515°W

ENTRY POINT

LAT: 40.39101°N
LONG: 104.91505°W

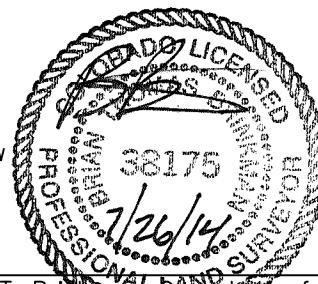
LEGEND

- = ALIQUOT MONUMENT AS DESCRIBED
- = CALCULATED POSITION

Brian T. Brinkman, on behalf of Lat40°, Inc.

Colorado Licensed Professional
Land Surveyor No. 38175

DATE: 7/26/2014
PROJECT#: 2014111



NOTE:

- 1) Bearings shown are Grid Bearings of the Colorado State Plane Coordinate System, North Zone, North American Datum 1983. The lined dimensions as contained herein are based upon the "U.S. Survey Foot."
- 2) Ground elevations are based on an observed GPS elevation (NAVD 1988 DATUM).
- 3) IMPROVEMENTS: See LOCATION DRAWING for all visible improvements within 500' of disturbed area.
- 4) SURFACE USE: CROPLAND
- 5) INSTRUMENT OPERATOR: BRIAN ROTTINGHAUS
- 6) NEAREST CULTURAL ITEMS:
BUILDING: ±1501' NE
BUILDING UNIT: ±1726' NE
HIGH OCCUPANCY BUILDING UNIT: 5280'+
DESIGNATED OUTSIDE ACTIVITY AREA: 5280'+
PUBLIC ROAD: ±1157' SW (COYOTE RIDGE DR.)
ABOVEGROUND UTILITY: ±1047' SE
RAILROAD: ±4201' SW
PROPERTY LINE: ±90' N

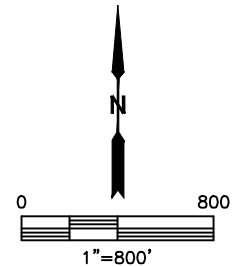
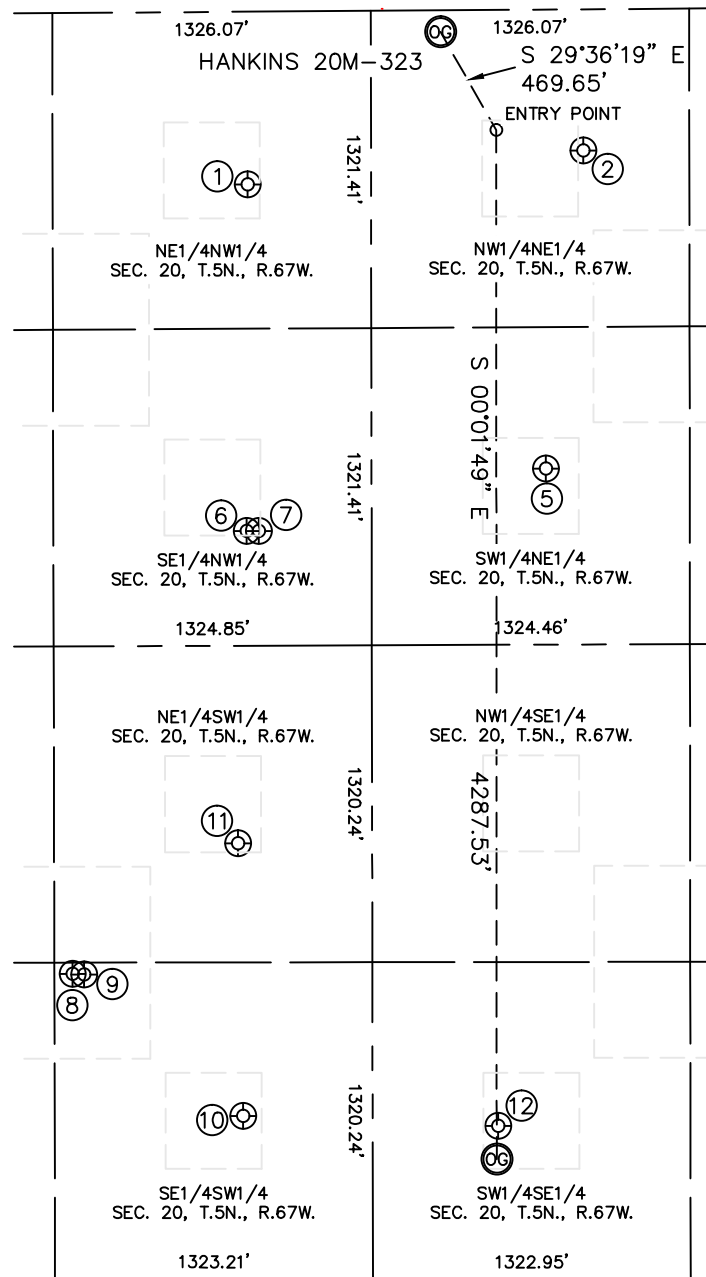


Lat40°, Inc. 1635 Foxtrail Drive, Suite 325 Loveland, CO 970-776-3321

SITE SKETCH

HANKINS 20M-323

SECTION: 20
TOWNSHIP: 5N
RANGE: 67W



WELL NO.	WELL NAME	SHL FOOTAGE				SHL LAT°	SHL LONG°	PDOP	ELEV (FT.)	1/4/1/4
1	ZIMMERMAN 3-20	719	FNL	2138	FWL	40.39041	-104.91877	1.7	4949	NENW
2	HANKINS 4	588	FNL	1768	FEL	40.39077	-104.91375	2.0	4941	NWNE
5	HANKINS 5	1913	FNL	1924	FEL	40.38713	-104.91434	1.7	4913	SWNE
6	UIV 6-20	2164	FNL	2130	FWL	40.38644	-104.91882	1.8	4922	SENW
7	UIV 22-20	2164	FNL	2180	FWL	40.38644	-104.91864	1.7	4923	SENW
8	CROISSANT 19-20	1270	FSL	1399	FWL	40.38139	-104.92147	1.5	4875	SESW
9	CROISSANT 23-20	1268	FSL	1447	FWL	40.38139	-104.92129	1.8	4875	SESW
10	CROISSANT 1	679	FSL	2108	FWL	40.37976	-104.91893	1.6	4865	SESW
11	HSR-CROISSANT 11-20	1814	FSL	2090	FWL	40.38287	-104.91898	1.5	4896	NESW
12	CROISSANT(FARMOIL) 2	639	FSL	2124	FEL	40.37962	-104.91512	1.5	4868	SWSE

DATE: 7/26/2014
PROJECT#: 2014111