



Physical Address: 345 Comanche St.  
 Mail to: Box 384, Kiowa, CO 80117  
 Ph. 303-621-8672 - Fax 303-621-7749  
 www.highprairiesurvey.com

Job # 11094 Ma-State #8S

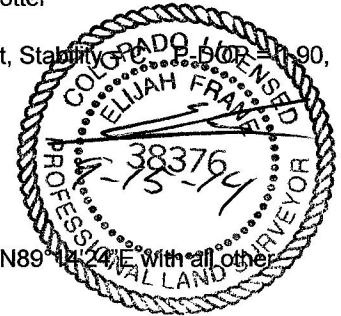
Inv # 3390

High Prairie Surveying of Kiowa, Colorado, in accordance with a request from **Wiepking Fullerton**, has determined the location of **Ma-State #8S** to be **2120 feet FNL**, and **1822 feet FEL**, (90° off Section lines) of **SECTION 24**, Township **10s**, Range **56w** of the 6th Principal Meridian, **Lincoln County**, Colorado.

**Date:** Staked 08/29/14 drawn on 09/05/14.  
**Rev:** Re-Staked 09/12/14

**Re:** Staked by Elijah Frane  
**Drawn:** Drawn by Dustin Cotter

**Basis of Elevation Spot:** USGS BM = E 25, PID = KJ0219, H-Order = First, V-Order = First, Stability = Stable, Sats = 8 US NAD 83 CO-C, Lat. = 39.21461, Long. = W103.60209 = 5248.17 gr. (us FT)



**Notes:** See Location Drawing for improvements within 500' of proposed well pad.  
 The ground elevation at staked location = 5267.79' gr.  
 This drawing does not represent a monumented survey or Land Survey Plat.

**Basis of Bearing:** Bearings were determined based on the North line of Section 24 to bear N89°14'24"E with all other bearings contained herein relative thereto.

