

**CEDMENT BOND LOG
GAMMA RAY**

Company	CASCADE PETROLEUM LLC			
Well	POSS A11S 55W 13 44			
Field	WILDCAT			
County	LINCOLN	State	COLORADO	
Location:	API #:		Other Services	
SHL: SESE 660' FSL & 660' FEEL SECTION 13, TOWNSHIP 11S, RANGE 55W LAT: 39.084550, LONG:-103.500530 SEC 13 TWP 11S RGE 55W				
Permanent Datum	K.B.	Elevation	5249'	
Log Measured From	G.L.	Ft Above PD	15'	
Drilling Measured From	G.L.	Elevation	K.B. 5264' D.F. 5263' G.L. 5249'	
Date	7-24-2014			
Run Number	ONE			
Depth Driller	8083'			
Present Depth Driller	4300'			
Depth Logger	4300'			
Bottom Logged Interval	4300'			
Top Log Interval	3300'			
Fluid Level	SURFACE			
Type Fluid	WATER			
Max. Recorded Temp.	N/A			
Estimated Cement Top	3960'			
Equipment Number	216			
Location	JHONSTOWN			
Recorded By	HARRIS			
Witnessed By	MR. DECKER			
Borehole Record				
Run Number	Bit	From	To	Size
Casing Record				
				Weight
				From
				To

<<< Fold Here >>>

All interpretations are opinions based on inferences from electrical or other measurements and we cannot and do not guarantee the accuracy or correctness of any interpretation, and we shall not, except in the case of gross or willful negligence on our part, be liable or responsible for any loss, costs, damages, or expenses incurred or sustained by anyone resulting from any interpretation made by any of our officers, agents or employees. These interpretations are also subject to our general terms and conditions set out in our current Price Schedule.

WARRIOR 7.0 SOFTWARE - Comments

**NOTE THIS LOG WAS DEPTH CORRELATED TO THE SCHLUMBERGER OPEN HOLE LOG DATED 5-17-14
MAIN PASS 5" = 100'
CSG PSI = STATIC**

Calibration Report

Database File: 07242014_cascade_poss-a11s.db
Dataset Pathname: pass6
Dataset Creation: Thu Jul 24 08:13:51 2014 by Log SCH 120430

Gamma Ray Calibration Report

Serial Number: 10007620
 Tool Model: 020
 Performed: Sun Jun 13 13:33:21 1993

Calibrator Value: 1.0 GAPI

Background Reading: 0.0 cps
 Calibrator Reading: 1.0 cps

Sensitivity: 1.0000 GAPI/cps

Segmented Cement Bond Log Calibration Report

Serial Number: 10009775
 Tool Model: 004

Calibration Casing Diameter: 5.500 in
 Calibration Depth: 1501.117 ft

Master Calibration, performed Thu Jul 24 07:58:58 2014:

	Raw (v)		Calibrated (mv)		Results	
	Zero	Cal	Zero	Cal	Gain	Offset
3FT	0.000	0.924	0.000	71.921	77.841	0.000
5FT	0.000	0.841	0.000	71.921	85.502	0.000
S1	0.000	0.951	0.000	100.000	105.204	0.000
S2	0.000	0.941	0.000	100.000	106.242	0.000
S3	0.000	0.908	0.000	100.000	110.146	0.000
S4	0.000	0.902	0.000	100.000	110.815	0.000
S5	0.000	0.905	0.000	100.000	110.555	0.000
S6	0.000	0.904	0.000	100.000	110.663	0.000
S7	0.000	0.931	0.000	100.000	107.386	0.000
S8	0.000	0.949	0.000	100.000	105.364	0.000

Calibration Report

Serial Number: 10009775
 Tool Model: 004
 Performed:

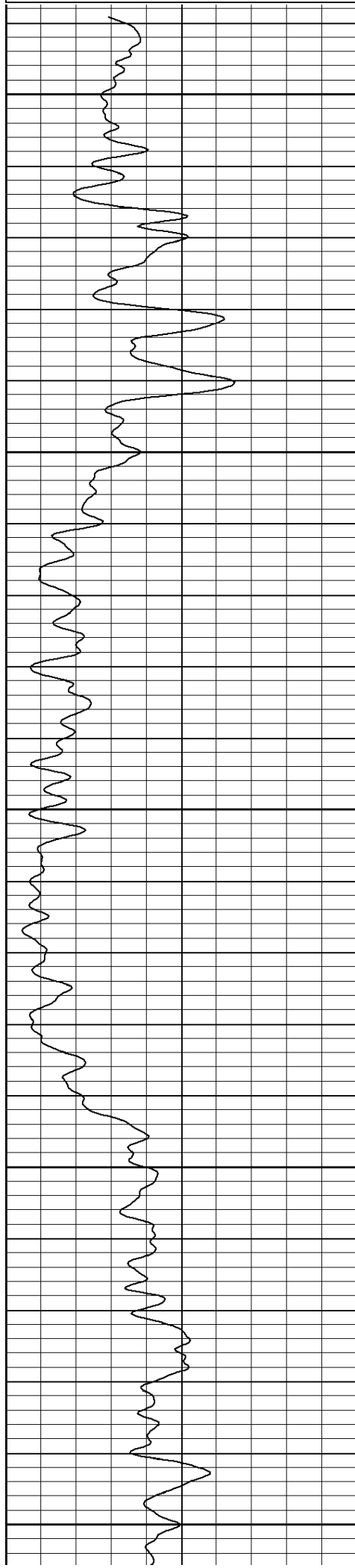
Low: Reference (degF) 0.000 Reading () 0.000
 High: 1.000 1.000
 Gain = 1.000 Offset= 0.000



MAIN PASS

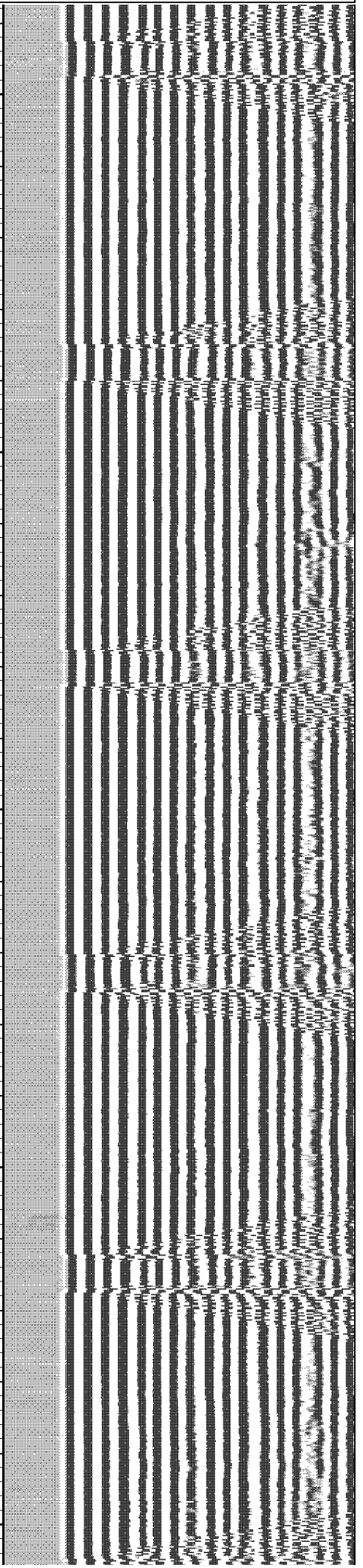
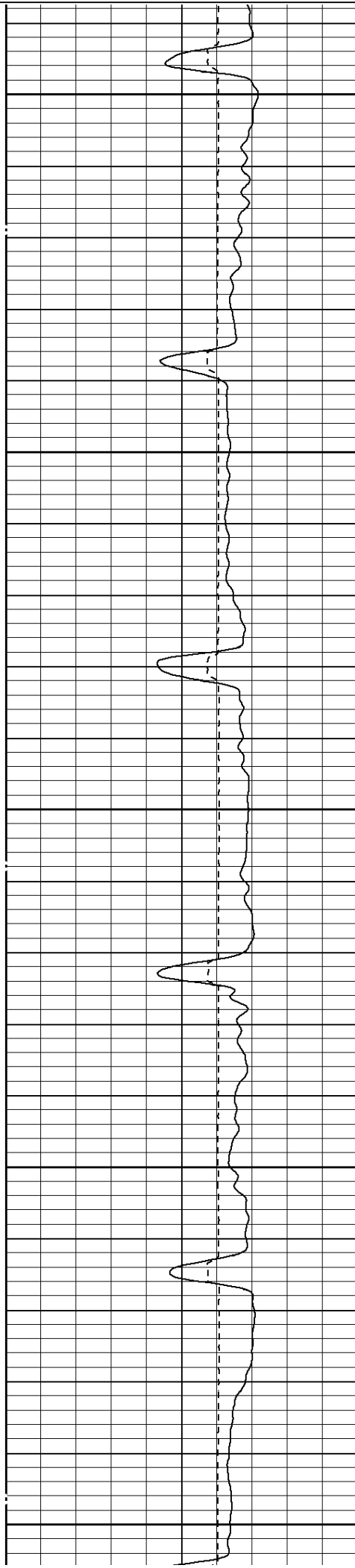
Database File: 07242014_cascade_poss-a11s.db
 Dataset Pathname: pass6.1
 Presentation Format: rmws_dsc
 Dataset Creation: Thu Jul 24 08:49:07 2014 by Calc SCH 120430
 Charted by: Depth in Feet scaled 1:240

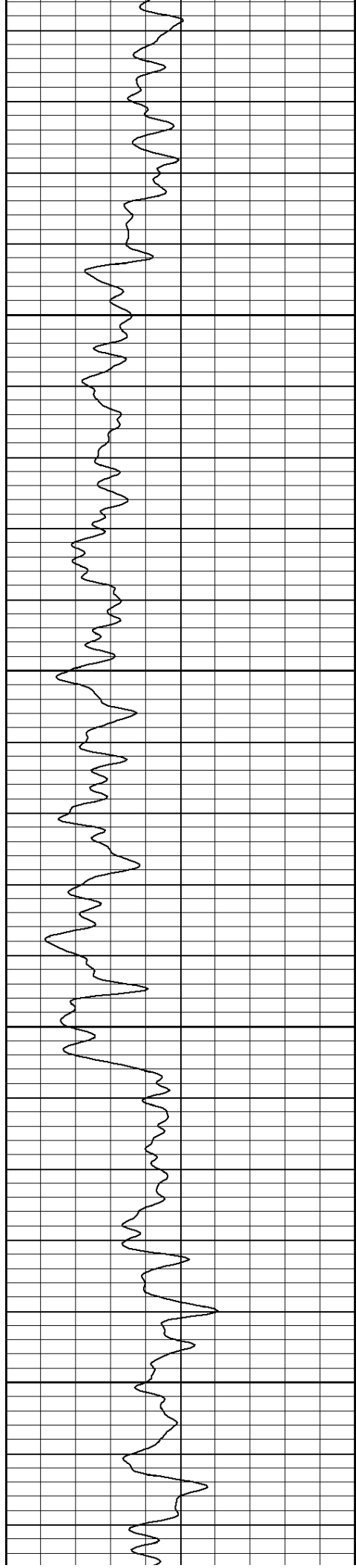
0	GR (GAPI)	200	LTEN	0	AMPx5 (mV)	20	200	VDL	1200
			0 (lb)4000	0	AMP (mV)	100			
				380	TT (usec)	180			



3300

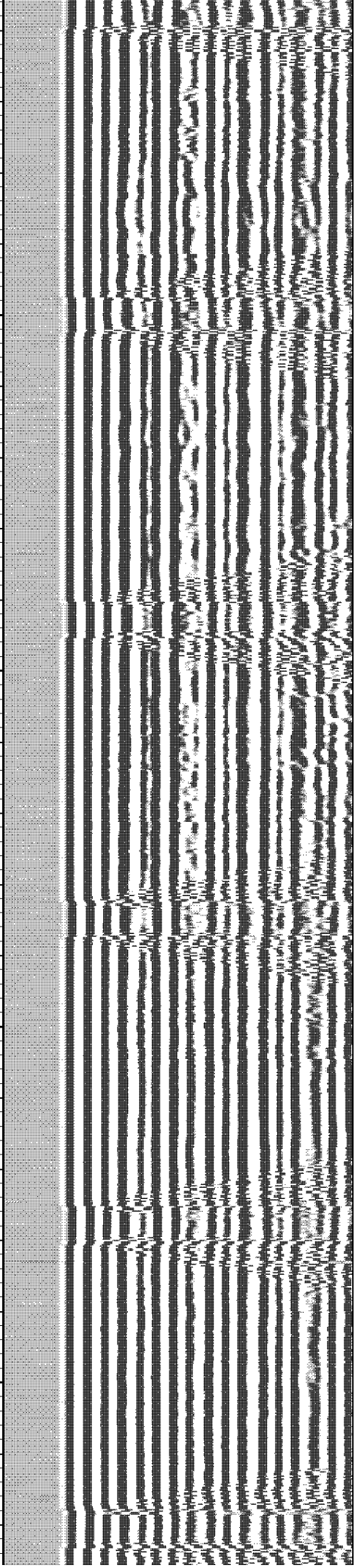
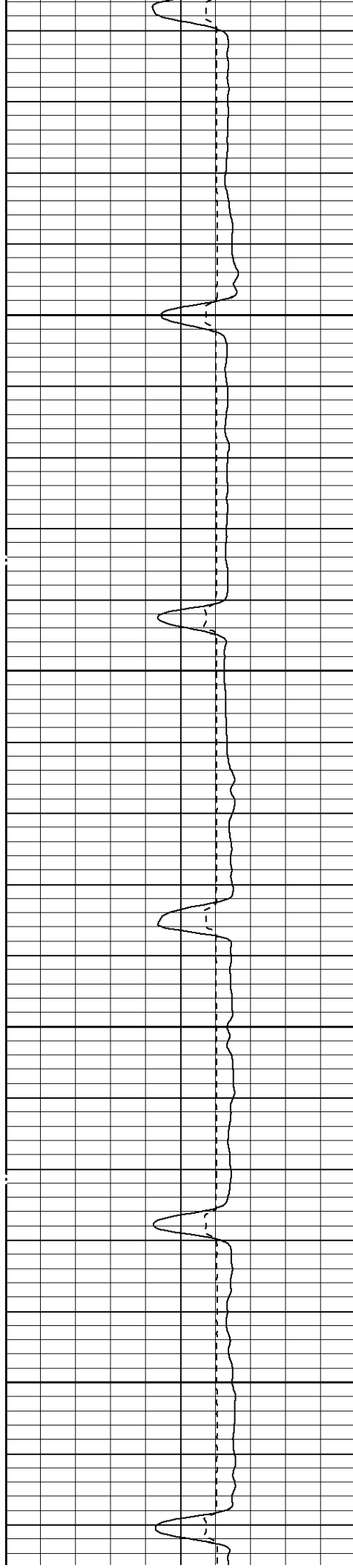
3400

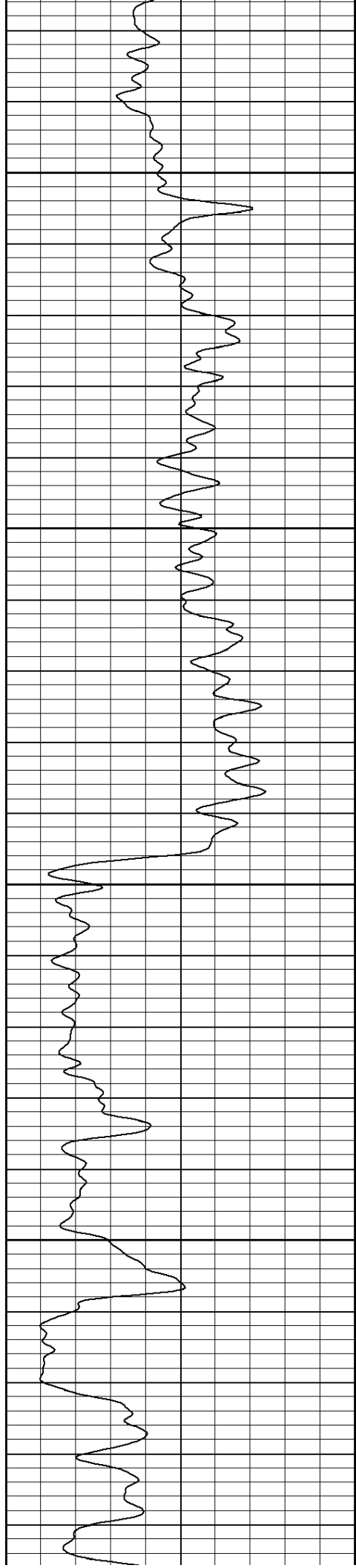




3500

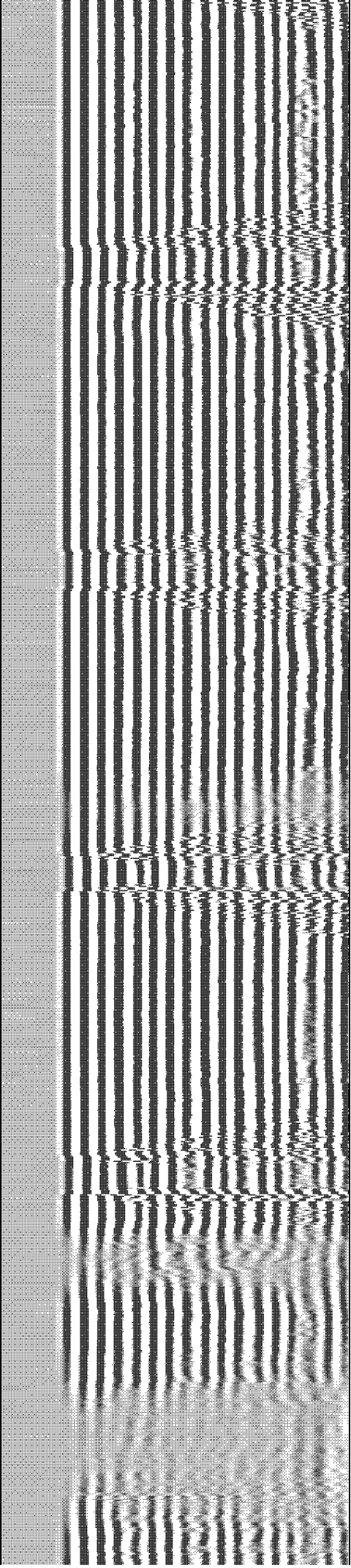
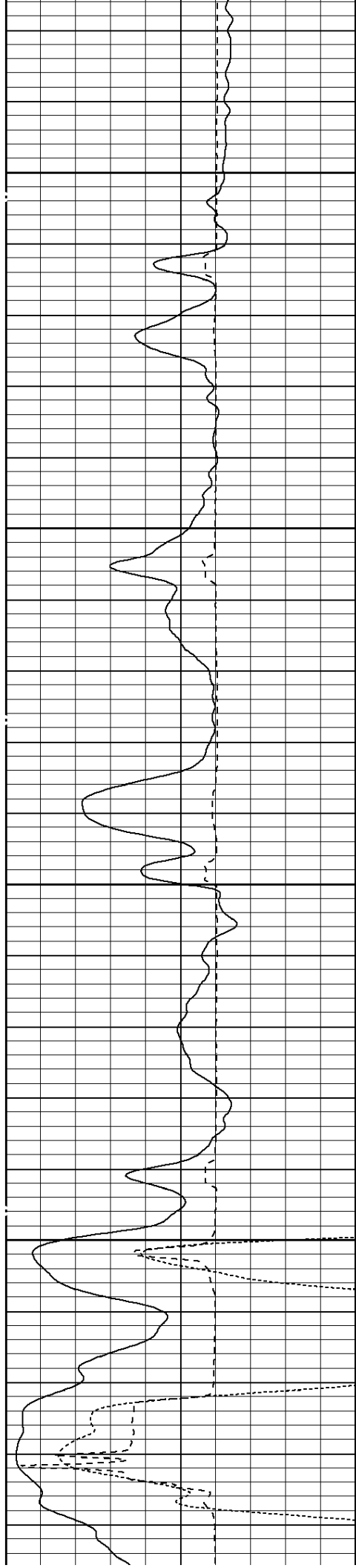
3600

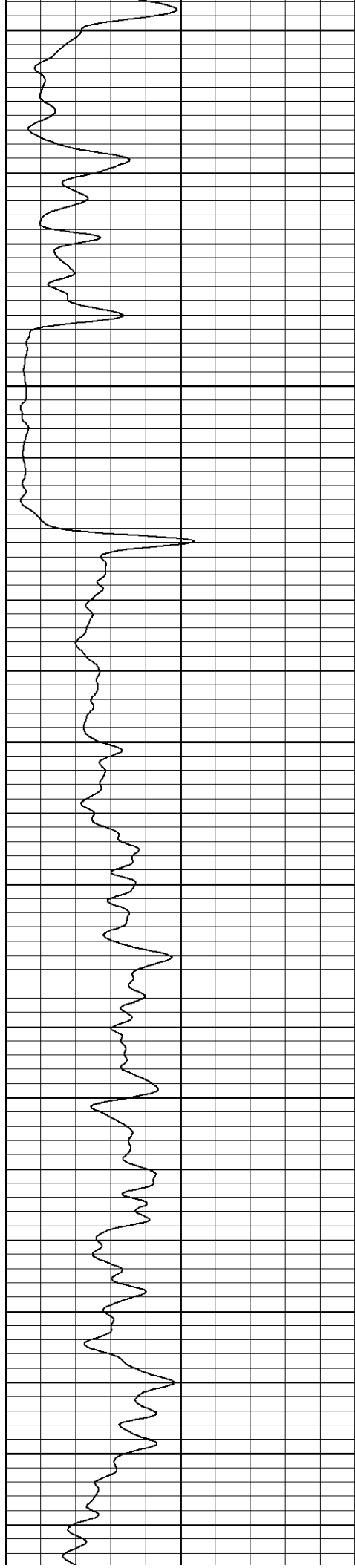




3700

3800

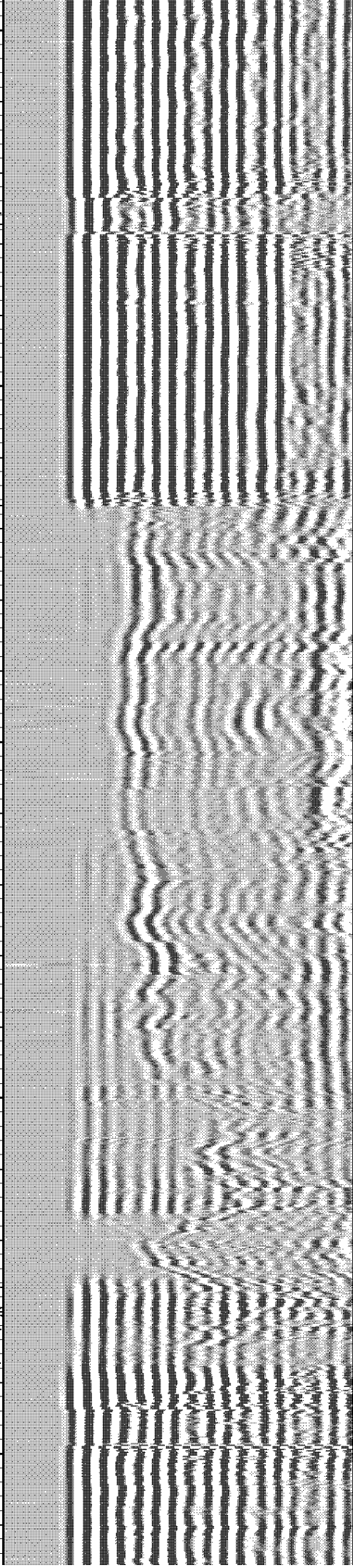
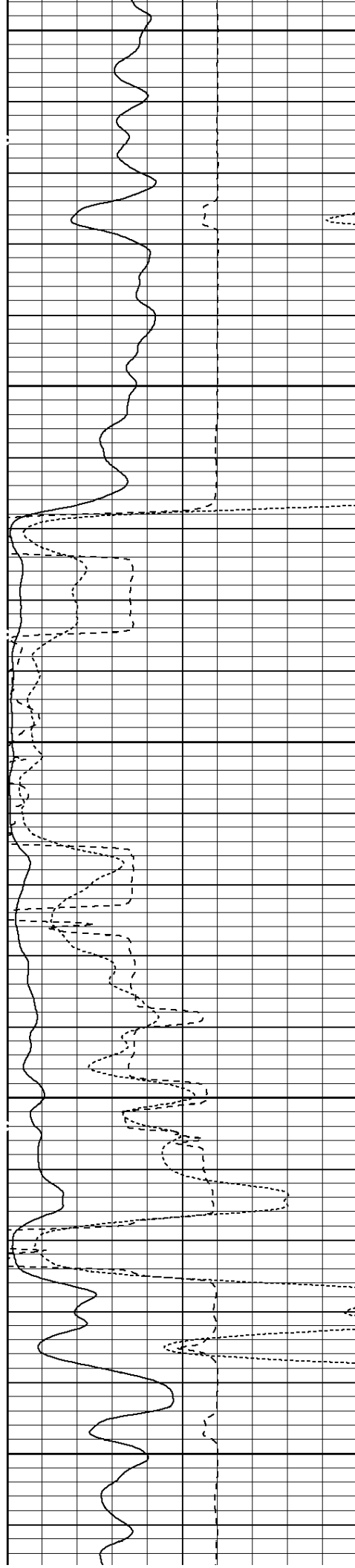


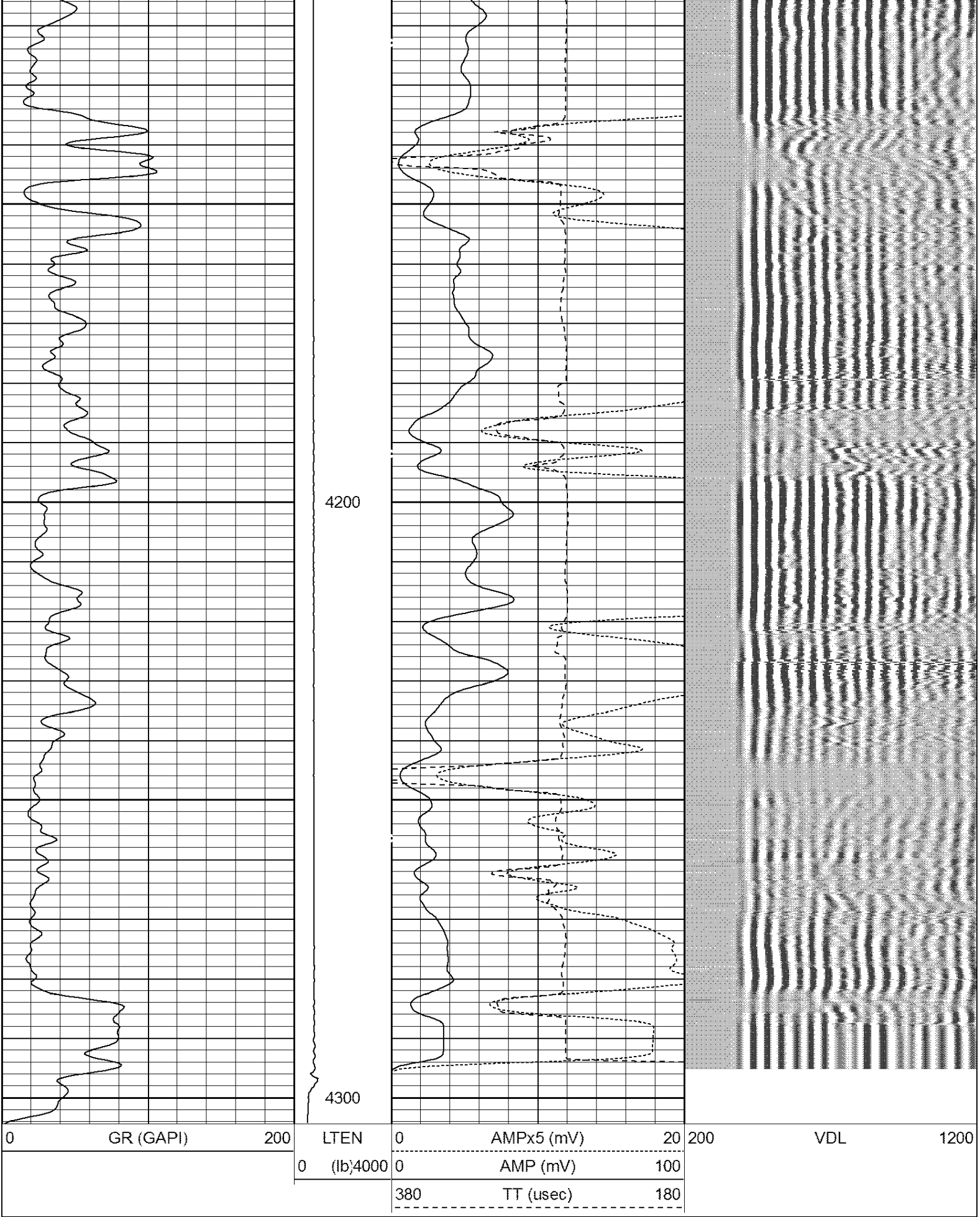



3900

4000

4100





Sensor	Offset (ft)	Schematic	Description	Len (ft)	OD (in)	Wt (lb)
			CHD-AES (000001)	1.04	1.69	2.00

