

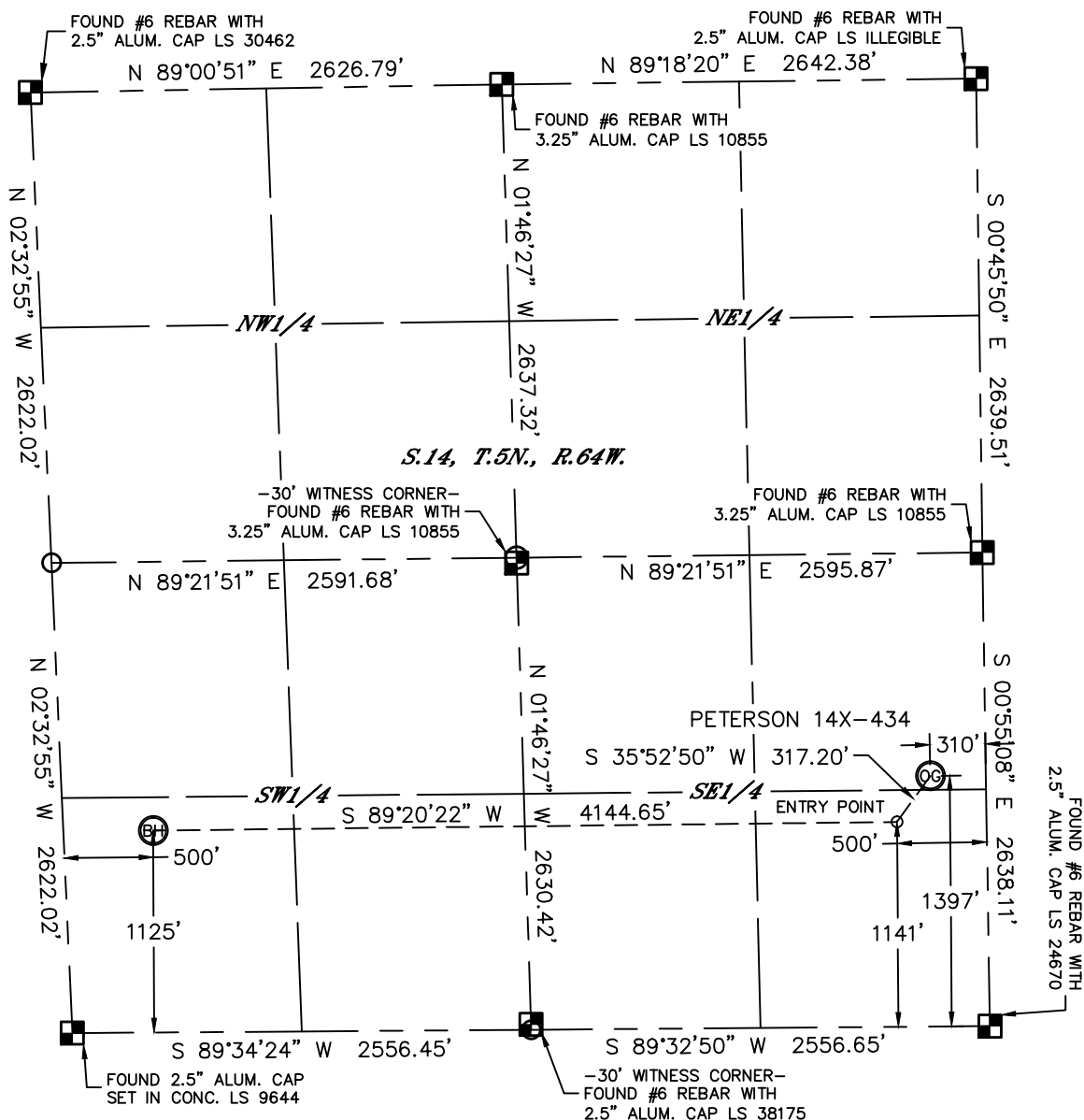


Lat40°, Inc. 1635 Foxtrail Drive, Suite 325 Loveland, CO 970-776-3321

WELL LOCATION CERTIFICATE

THIS MAP DOES NOT REPRESENT A BOUNDARY SURVEY

SECTION: 14
TOWNSHIP: 5N
RANGE: 64W



In accordance with a request from Al Bragg with PDC ENERGY Lat40°, Inc. has determined the surface location of the PETERSON 14X-434 to be 1397' from the SOUTH line and 310' from the EAST line and the bottom hole to be 1125' from the SOUTH line and 500' from the WEST line as measured at right angles from the section lines of Section 14, Township 5 North, Range 64 West of the Sixth Principal Meridian, County of Weld, State of Colorado.

I hereby state that this Well Location Certificate was prepared by me, or under my direct supervision, that the fieldwork was completed on 1/30/2014, for and on behalf of PDC ENERGY. That this is not a Land Survey Plat or an Improvement Survey Plat, and that it is not to be relied upon for establishment of fence, building, or other future improvement lines.

NOTE:

- 1) Bearings shown are Grid Bearings of the Colorado State Plane Coordinate System, North Zone, North American Datum 1983/2007. The lineal dimensions as contained herein are based upon the "U.S. Survey Foot."
- 2) Ground elevations are based on an observed GPS elevation (NAVD 1988 DATUM).
- 3) IMPROVEMENTS: See LOCATION DRAWING for all visible improvements within 500' of disturbed area.
- 4) SURFACE USE: CROP LAND
- 5) INSTRUMENT OPERATOR: BRIAN ROTTINGHAUS
- 6) NEAREST CULTURAL ITEMS:
BUILDING 684' NE
BUILDING UNIT 1045' NE
HIGH OCCUPANCY BUILDING UNIT +5280'
DESIGNATED OUTSIDE ACTIVITY AREA +5280'
PUBLIC ROAD 1228' N (CR 388)
ABOVE GROUND UTILITY 912' NE
RAILROAD +5280'
PROPERTY LINE 310' E

SURFACE LOCATION

LAT: 40.39586°N
LONG: 104.50921°W
PDOP: 1.9
ELEV: 4571'
1/4,1/4: NE1/4SE1/4

ENTRY POINT

LAT: 40.39516°N
LONG: 104.50988°W

BOTTOM HOLE

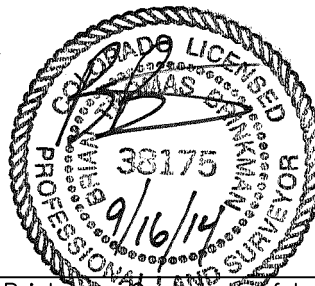
LAT: 40.39516°N
LONG: 104.52476°W

LEGEND

- = ALIQUOT MONUMENT AS DESCRIBED
○ = CALCULATED POSITION

Brian T. Brinkman, on behalf of Lat40°, Inc.
Colorado Licensed Professional
Land Surveyor No. 38175

DATE: rev9/16/2014
PROJECT#: 2013127



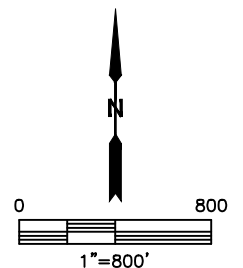
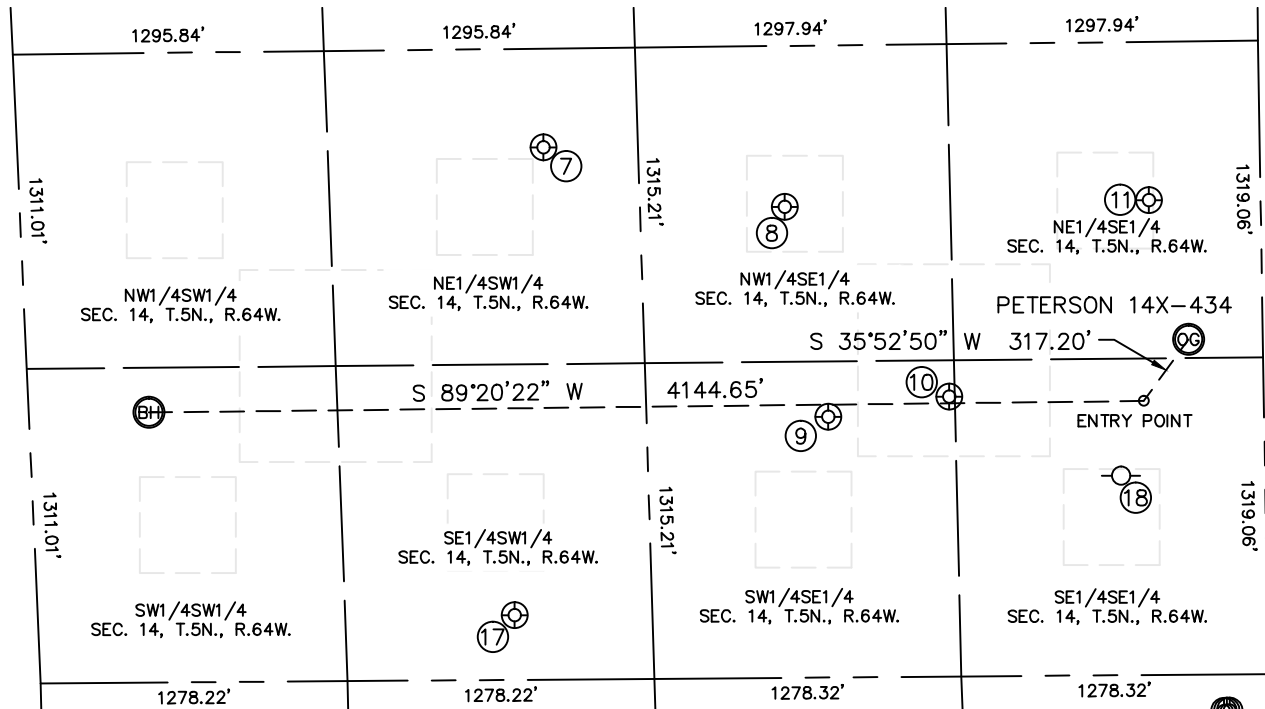


Lat40°, Inc. 1635 Foxtrail Drive, Suite 325 Loveland, CO 970-776-3321

SITE SKETCH

PETERSON 14X-434

SECTION: 14
TOWNSHIP: 5N
RANGE: 64W



WELL NO.	WELL NAME	SHL FOOTAGE				SHL LAT°	SHL LONG°	PDOP	ELEV (FT.)	1/4/1/4
7	FOOS 23-14	2216	FSL	2190	FWL	40.39813	-104.51882	2.9	4582	NESW
8	FOOS 14-1	1961	FSL	1982	FEL	40.39742	-104.51522	3.0	4576	NWSE
9	FOOS 14-2	1085	FSL	1816	FEL	40.39502	-104.51461	3.1	4572	SWSE
10	PETERSON 5	1166	FSL	1311	FEL	40.39524	-104.51279	3.0	4573	SWSE
11	PETERSON 14-2	1977	FSL	465	FEL	40.39745	-104.50977	2.7	4571	NESE
17	KIELIAN 14-1	269	FSL	1984	FWL	40.39279	-104.51933	2.4	4571	SESW
18	PETERSON 14-1	830	FSL	600	FEL	40.39417	-104.51000	N/A	4568	SESE

NOTE: THE ABANDONED WELL DATA SHOWN IN RED ABOVE
WAS OBTAINED FROM COGCC SCOUT CARDS.

DATE: rev9/16/2014
PROJECT#: 2013127