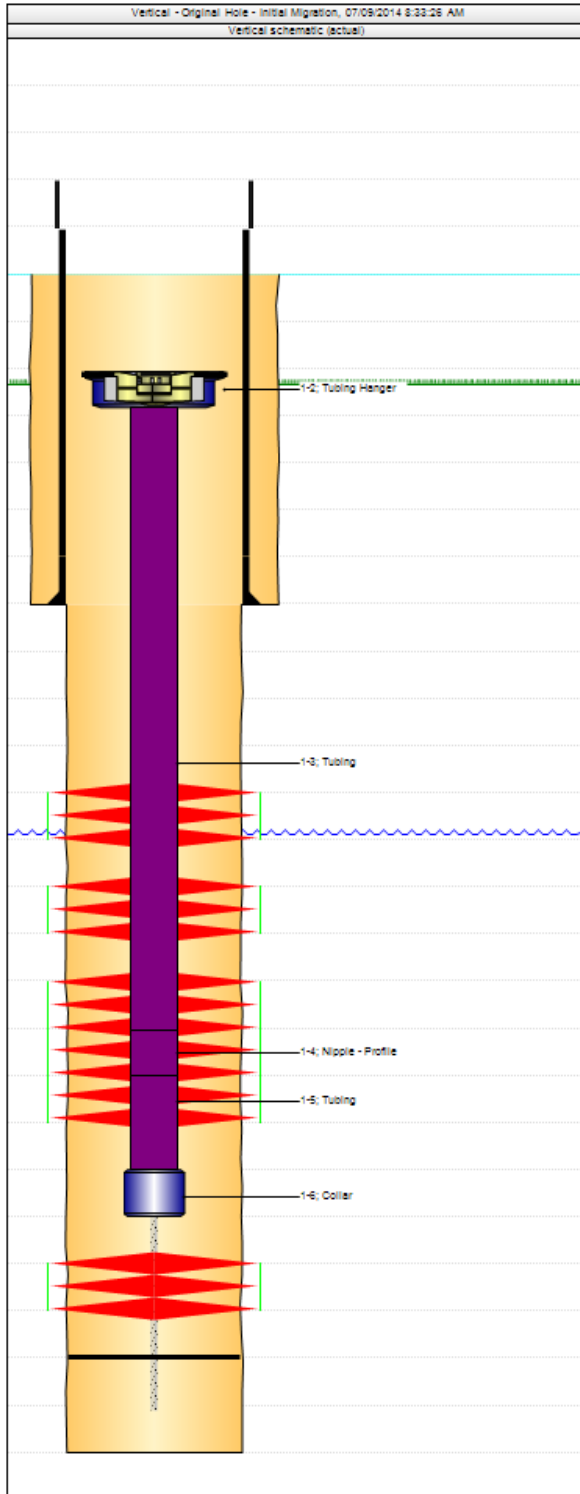


Final Well Report Detailed (graphic)

Well Name: Wieben 2-13 (M2SW)

API #	Well Type	Business Unit	SBU	Area	Pad	State	County/Parish
05045093640000	Gas	Southern Rockies	South Piceance	Mamm Creek	M2SW	CO	GARFIELD

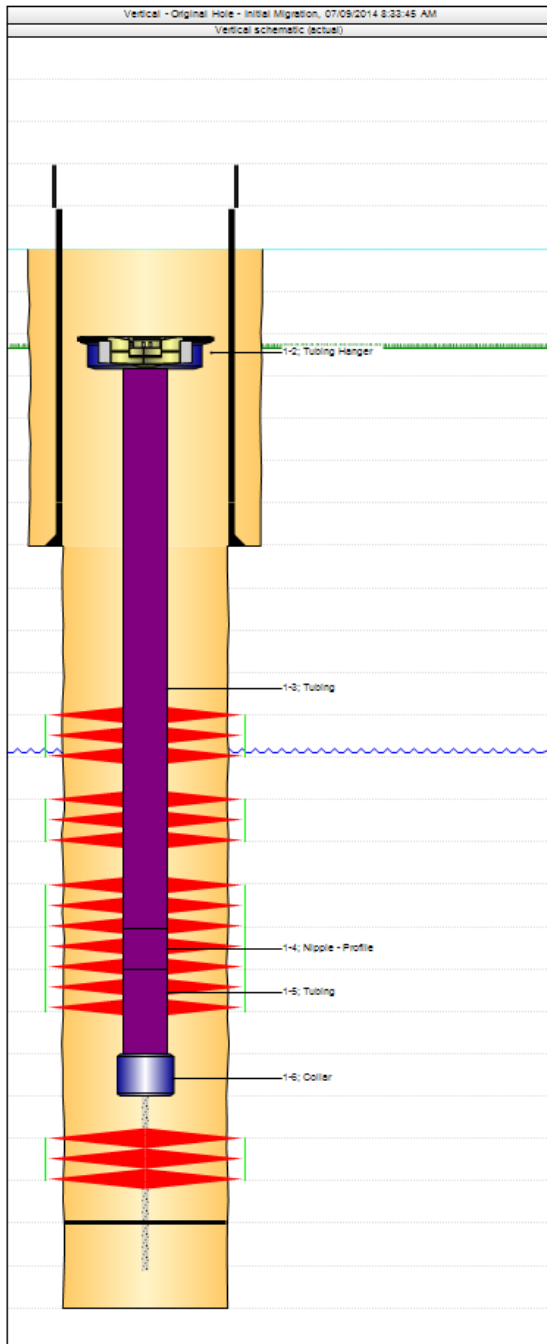


Well Header Setup					
Well Name Wieben 2-13 (M2SW)			API # 05045093640000		
Original KB Elevation (ft) 7,785.43		Ground Elevation (ft) 7,769.03		Spud Date 10/18/2003	Final Rig Release Date 12/10/2003
Surface Legal Location			Latitude (decimal) (°) 39.38803000		Longitude (decimal) (°) -107.74803000
Wellbore Sections Setup					
Wellbore Type Original Hole - Initial Migration			Kick Off Depth (ftKB)		VS Dir (°)
Section Des		Hole Size (in)		Act Top (ftKB)	Act Btm (ftKB)
Surface		12 1/4		0.0	1,193.0
Production		8 3/4		1,193.0	9,508.0
Plug Back Total Depths					
Date	Depth (ftKB)	Method		Com	
12/30/2004	9,180.0			Wellcore PBTD (TVD): 0	
Casing Data					
Surface					
Casing Description Surface			Run Date		Set Depth (ftKB) 1,193.0
Item Des	OD (in)	ID (in)	Wt (lb/ft)	Grade	Len (ft)
Guide Shoe	10				1.00
Casing Joints	9 5/8	8.921	36.00	J-55	43.23
Float Joint	9 5/8	8.921	36.00		
Casing Joints	9 5/8	8.921	36.00	J-55	1,151.69
Production					
Casing Description Production			Run Date		Set Depth (ftKB) 9,507.0
Item Des	OD (in)	ID (in)	Wt (lb/ft)	Grade	Len (ft)
Guide Shoe				K-55	1.50
Shoe			17.00	P-110	42.62
Float Collar				K-55	1.47
Casing Joints			17.00	P-110	2,067.56
Marker Joint			17.00	P-110	21.89
Casing Joints			17.00	P-110	7,378.35
Cement Data					
Surface, 1,193.0ftKB Proposed? No					
Description Surface Casing Cement		String Surface, 1,193.0ftKB Proposed? No		Wellbore Original Hole - Initial Migration	Type Casing
Stg #	Description	Top (ftKB)		Btm (ftKB)	Full Return?
1	Surface			1,193.0	
Sequence		Fluid Des		Amount (sacks)	Class
Fill		50/50		250	
Tail		G		215	
Production, 9,507.0ftKB Proposed? No					
Description Production Casing Cement		String Production, 9,507.0ftKB Proposed? No		Wellbore Original Hole - Initial Migration	Type Casing
Stg #	Description	Top (ftKB)		Btm (ftKB)	Full Return?
1	Production	1,370.0		9,507.0	
Sequence		Fluid Des		Amount (sacks)	Class
Tail		35/65 POZ/G		825	
Lead		G		640	
Lead		TXI		800	
Tubing Data					
Tubing Description Tubing from Migration			Tubing Set Date 12/30/2004		Set Depth (ftKB) 8,504.0
Item Des	OD (in)	ID (in)		Len (ft)	
Tubing Hanger	7 1/16	1.995		0.75	
Tubing	2 3/8	1.995		8,454.26	
Nipple - Profile	2 3/8	1.810		0.97	
Tubing	2 3/8	1.995		31.47	



Final Well Report Detailed (graphic)
Well Name: Wieben 2-13 (M2SW)

API #	Well Type	Business Unit	SSU	Area	Pad	State	County/Parish
05045093640000	Gas	Southern Rockies	South Piceance	Mamm Creek	M2SW	CO	GARFIELD



Item Des	OD (in)	ID (in)	Len (ft)			
Collar	3 1/16	2.594	0.40			
Rod Data						
Rod Description	Run Date	Set Depth (ft/B)				
Item Des	OD (in)	Len (ft)				
Zones						
Zone Name	Wellbore	Top Depth (ft/B)	Botm (ft/B)			
Original Migration	Original Hole - Initial Migration					
Cur Start Date	Current Status	Formation(s)				
11/16/2008	Shut-In					
Perforation Data						
Stage #	Type	Top Depth (ft/B)	Bottom Depth (ft/B)	Zone		
4		7,533.0	7,833.0	Original Migration, Original Hole - Initial Migration		
3		7,879.0	8,166.0	Original Migration, Original Hole - Initial Migration		
2		8,255.0	8,500.0	Original Migration, Original Hole - Initial Migration		
1		8,698.0	9,016.0	Original Migration, Original Hole - Initial Migration		
Other In Hole						
OD (in)	Des	Top (ft/B)	Botm (ft/B)	ID (in)	Make	Model
Wellhead Description						
Install Date	Type	Make	Size (in)	WVP (psi)		
Make	Model	Section	Top Sz (in)	Botm Sz (in)	WVP (psi)	
Schematic Annotations						
Depth (ft/B)				Annotation		
General Notes						
Date	Com					