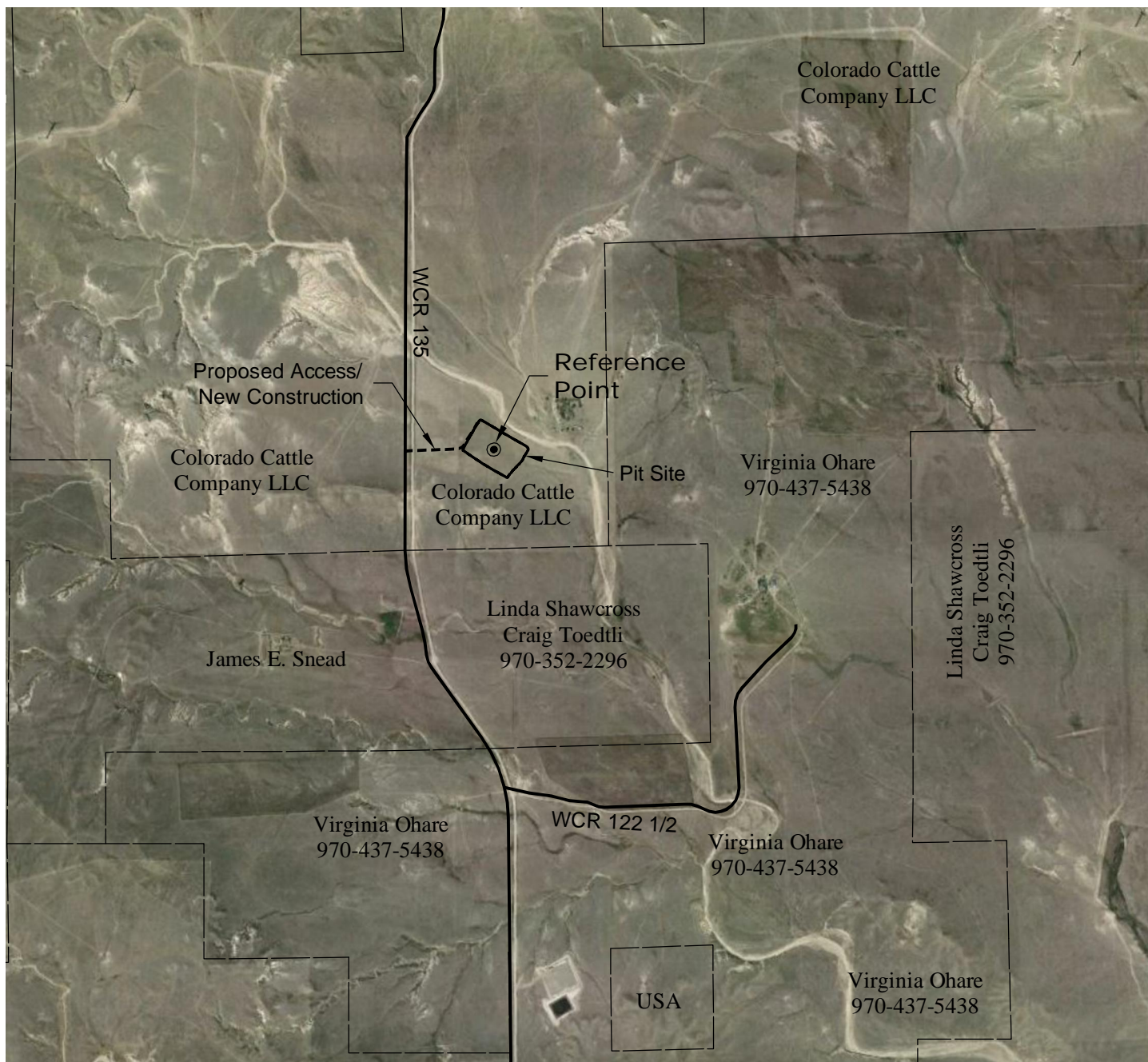


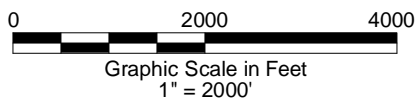
ACCESS ROAD MAP



DRIVING DIRECTIONS:

- MP 0.0 - Intersection of Highway 14 & WCR 129 in Raymer;
East on Highway 14
- MP 8.6 - Left on Highway 71 (WCR 147); continue north on Highway 71
- MP 26.3 - Left on WCR 120
- MP 31.0 - Right on WCR 135
- MP 34.2 - Right on access to the Ohare 1-29-11-57 Pit
- MP 34.4 - Ohare 1-29-11-57 Pit

9/15/14



GEO SURV

LAND SURVEYING AND MAPPING
LAFAYETTE - WINTER PARK
Ph 303 666 0379 Fx 303 665 6320

CARRIZO NIOBRARA LLC
OHARE 1-29-11-57 FRESHWATER PIT

SW1/4 SW1/4 SECTION 29 T11N R57W
6th PM WELD COUNTY COLORADO