

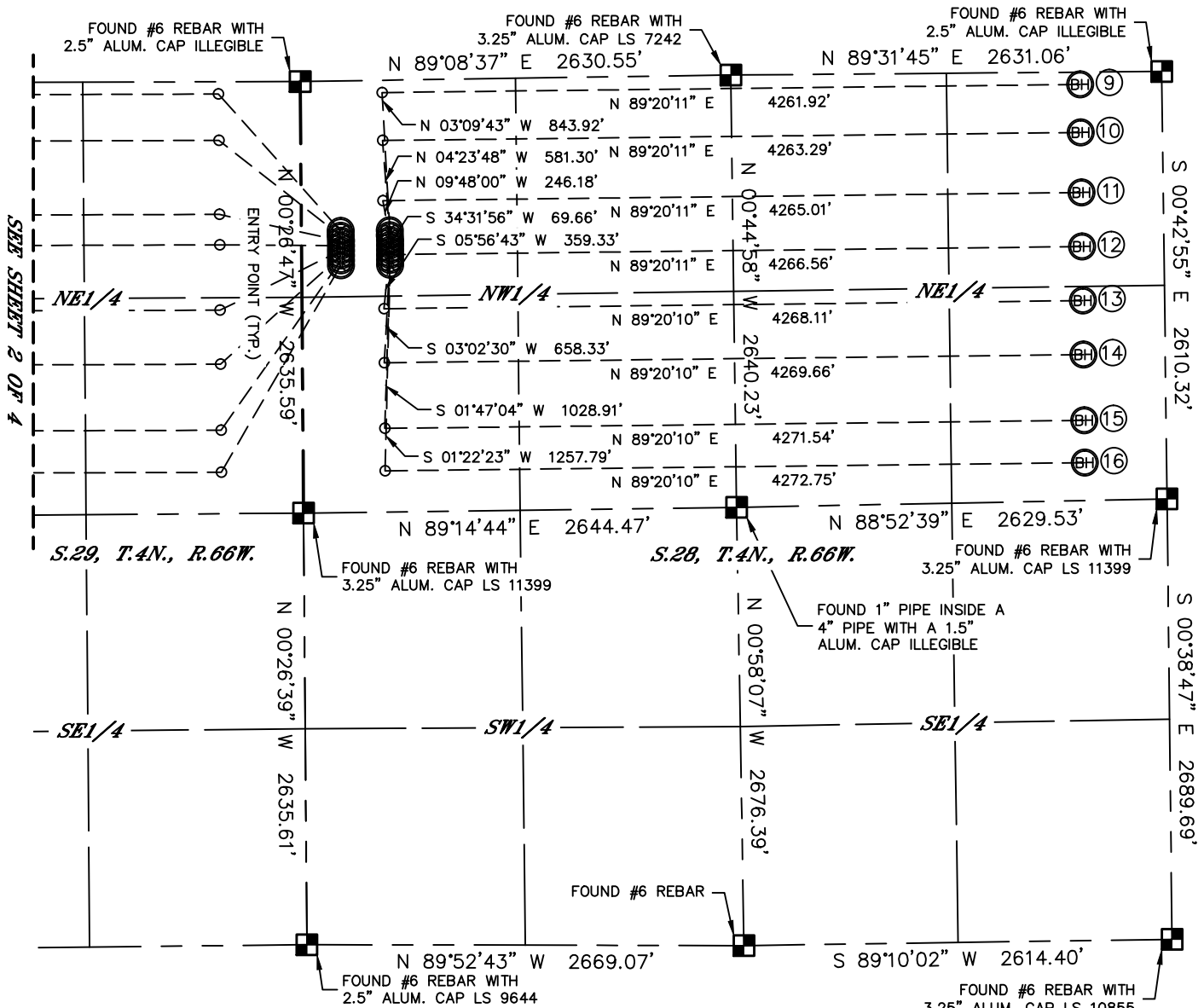


MULTI-WELL PLAN

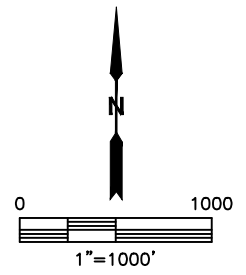
WIEDEMAN 4N66W28F PAD

SECTION: 28
TOWNSHIP: 4N
RANGE: 66W

THIS MAP DOES NOT REPRESENT A BOUNDARY SURVEY



| # | WELL NAME | BHL FOOTAGE | BHL LAT ° | BHL LONG ° |
|----|------------------|-------------------|-----------|------------|
| 1 | WIEDEMAN 28G-214 | 2385 FNL 2165 FEL | 40.28339 | -104.81873 |
| 2 | WIEDEMAN 28G-314 | 2128 FNL 2164 FEL | 40.28410 | -104.81873 |
| 3 | WIEDEMAN 28F-234 | 1725 FNL 2164 FEL | 40.28520 | -104.81873 |
| 4 | WIEDEMAN 28F-304 | 1395 FNL 2164 FEL | 40.28611 | -104.81874 |
| 5 | WIEDEMAN 28F-214 | 996 FNL 2163 FEL | 40.28720 | -104.81874 |
| 6 | WIEDEMAN 28F-314 | 810 FNL 2163 FEL | 40.28772 | -104.81874 |
| 7 | WIEDEMAN 28E-234 | 358 FNL 2163 FEL | 40.28896 | -104.81875 |
| 8 | WIEDEMAN 28E-404 | 75 FNL 2163 FEL | 40.28973 | -104.81875 |
| 9 | WIEDEMAN 28E-202 | 75 FNL 500 FEL | 40.28969 | -104.77484 |
| 10 | WIEDEMAN 28E-432 | 368 FNL 500 FEL | 40.28888 | -104.77484 |
| 11 | WIEDEMAN 28F-312 | 735 FNL 500 FEL | 40.28788 | -104.77483 |
| 12 | WIEDEMAN 28F-412 | 1065 FNL 500 FEL | 40.28697 | -104.77483 |
| 13 | WIEDEMAN 28F-202 | 1395 FNL 500 FEL | 40.28606 | -104.77482 |
| 14 | WIEDEMAN 28F-432 | 1725 FNL 500 FEL | 40.28516 | -104.77482 |
| 15 | WIEDEMAN 28G-312 | 2126 FNL 500 FEL | 40.28406 | -104.77481 |
| 16 | WIEDEMAN 28G-212 | 2385 FNL 500 FEL | 40.28335 | -104.77481 |



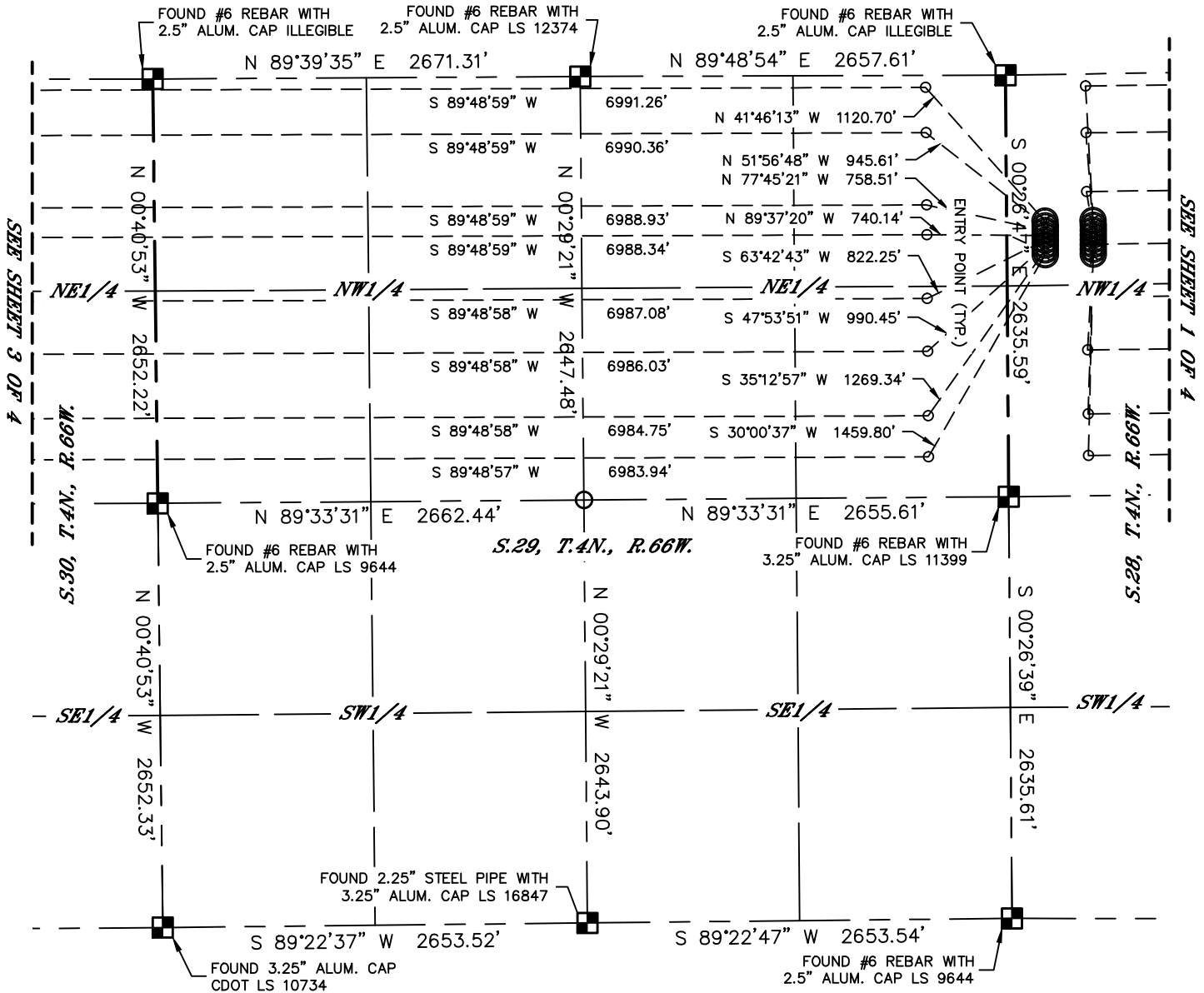


MULTI-WELL PLAN

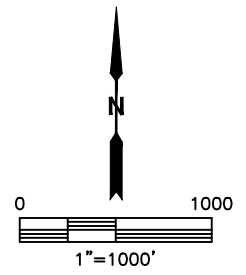
WIEDEMAN 4N66W28F PAD

SECTION: 28
TOWNSHIP: 4N
RANGE: 66W

THIS MAP DOES NOT REPRESENT A BOUNDARY SURVEY



| # | WELL NAME | BHL FOOTAGE | BHL LAT ° | BHL LONG ° |
|----|------------------|-------------------|-----------|------------|
| 1 | WIEDEMAN 28G-214 | 2385 FNL 2165 FEL | 40.28339 | -104.81873 |
| 2 | WIEDEMAN 28G-314 | 2128 FNL 2164 FEL | 40.28410 | -104.81873 |
| 3 | WIEDEMAN 28F-234 | 1725 FNL 2164 FEL | 40.28520 | -104.81873 |
| 4 | WIEDEMAN 28F-304 | 1395 FNL 2164 FEL | 40.28611 | -104.81874 |
| 5 | WIEDEMAN 28F-214 | 996 FNL 2163 FEL | 40.28720 | -104.81874 |
| 6 | WIEDEMAN 28F-314 | 810 FNL 2163 FEL | 40.28772 | -104.81874 |
| 7 | WIEDEMAN 28E-234 | 358 FNL 2163 FEL | 40.28896 | -104.81875 |
| 8 | WIEDEMAN 28E-404 | 75 FNL 2163 FEL | 40.28973 | -104.81875 |
| 9 | WIEDEMAN 28E-202 | 75 FNL 500 FEL | 40.28969 | -104.77484 |
| 10 | WIEDEMAN 28E-432 | 368 FNL 500 FEL | 40.28888 | -104.77484 |
| 11 | WIEDEMAN 28F-312 | 735 FNL 500 FEL | 40.28788 | -104.77483 |
| 12 | WIEDEMAN 28F-412 | 1065 FNL 500 FEL | 40.28697 | -104.77483 |
| 13 | WIEDEMAN 28F-202 | 1395 FNL 500 FEL | 40.28606 | -104.77482 |
| 14 | WIEDEMAN 28F-432 | 1725 FNL 500 FEL | 40.28516 | -104.77482 |
| 15 | WIEDEMAN 28G-312 | 2126 FNL 500 FEL | 40.28406 | -104.77481 |
| 16 | WIEDEMAN 28G-212 | 2385 FNL 500 FEL | 40.28335 | -104.77481 |





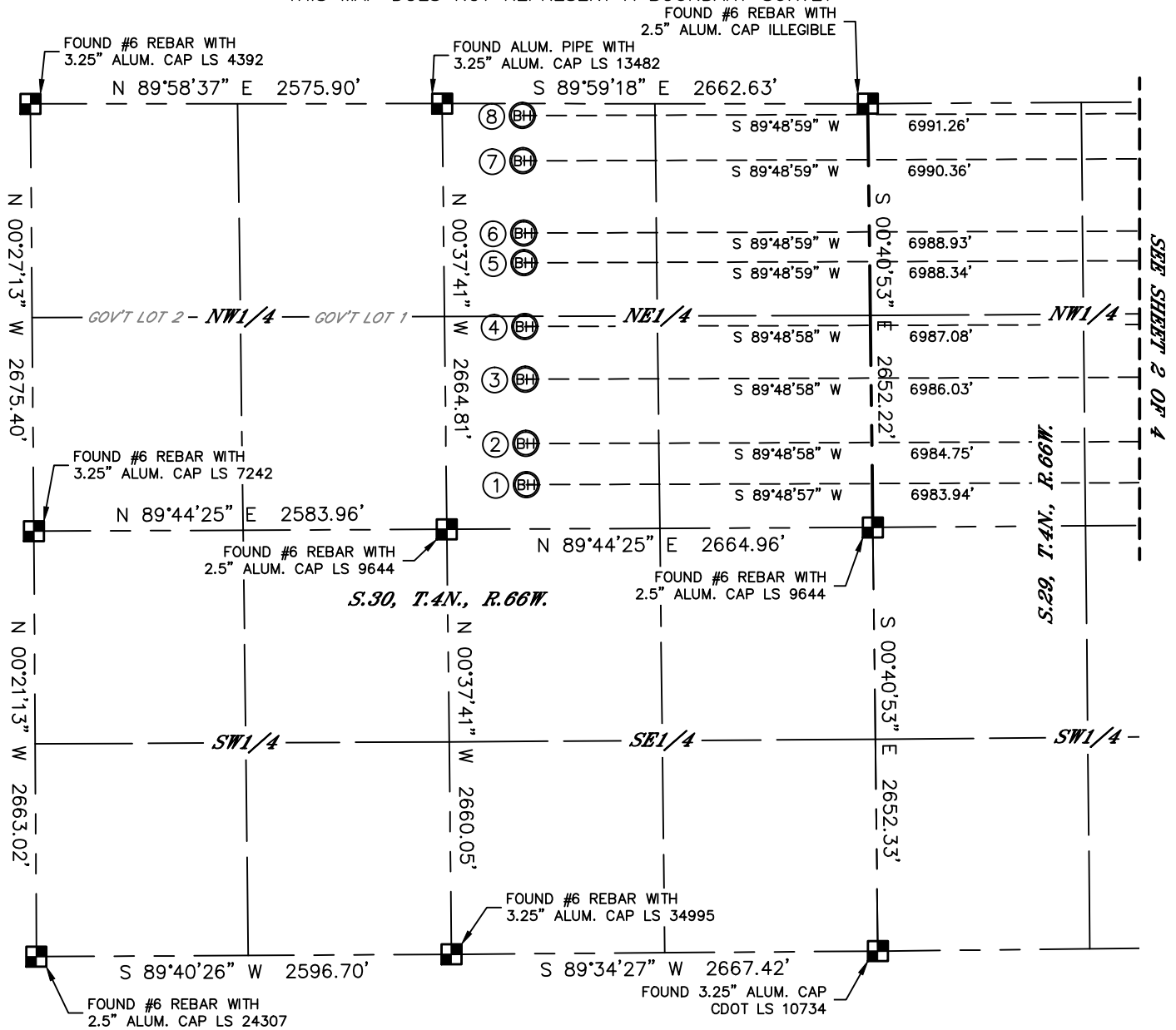
Lat40°, Inc. 1635 Foxtrail Drive, Suite 325 Loveland, CO 970-776-3321

MULTI-WELL PLAN

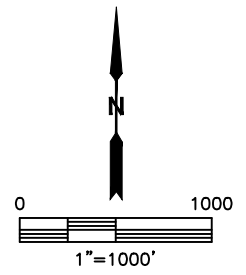
WIEDEMAN 4N66W28F PAD

SECTION: 28
TOWNSHIP: 4N
RANGE: 66W

THIS MAP DOES NOT REPRESENT A BOUNDARY SURVEY



| # | WELL NAME | BHL FOOTAGE | BHL LAT ° | BHL LONG ° |
|----|------------------|-------------------|-----------|------------|
| 1 | WIEDEMAN 28G-214 | 2385 FNL 2165 FEL | 40.28339 | -104.81873 |
| 2 | WIEDEMAN 28G-314 | 2128 FNL 2164 FEL | 40.28410 | -104.81873 |
| 3 | WIEDEMAN 28F-234 | 1725 FNL 2164 FEL | 40.28520 | -104.81873 |
| 4 | WIEDEMAN 28F-304 | 1395 FNL 2164 FEL | 40.28611 | -104.81874 |
| 5 | WIEDEMAN 28F-214 | 996 FNL 2163 FEL | 40.28720 | -104.81874 |
| 6 | WIEDEMAN 28F-314 | 810 FNL 2163 FEL | 40.28772 | -104.81874 |
| 7 | WIEDEMAN 28E-234 | 358 FNL 2163 FEL | 40.28896 | -104.81875 |
| 8 | WIEDEMAN 28E-404 | 75 FNL 2163 FEL | 40.28973 | -104.81875 |
| 9 | WIEDEMAN 28E-202 | 75 FNL 500 FEL | 40.28969 | -104.77484 |
| 10 | WIEDEMAN 28E-432 | 368 FNL 500 FEL | 40.28888 | -104.77484 |
| 11 | WIEDEMAN 28F-312 | 735 FNL 500 FEL | 40.28788 | -104.77483 |
| 12 | WIEDEMAN 28F-412 | 1065 FNL 500 FEL | 40.28697 | -104.77483 |
| 13 | WIEDEMAN 28F-202 | 1395 FNL 500 FEL | 40.28606 | -104.77482 |
| 14 | WIEDEMAN 28F-432 | 1725 FNL 500 FEL | 40.28516 | -104.77482 |
| 15 | WIEDEMAN 28G-312 | 2126 FNL 500 FEL | 40.28406 | -104.77481 |
| 16 | WIEDEMAN 28G-212 | 2385 FNL 500 FEL | 40.28335 | -104.77481 |



SHEET 3 OF 4

DATE: 7/8/2014
PROJECT#: 2014114



MULTI-WELL PLAN

WIEDEMAN 4N66W28F PAD

SECTION: 28
TOWNSHIP: 4N
RANGE: 66W

