

BONANZA CREEK ENERGY INC.

WELD COUNTY, COLORADO (NAD 83)

NW NW SEC. 22 T5N R61W 6th P.M.

PRONGHORN 21-24-22HNB

ORIGINAL WELLBORE

16 September, 2014

Plan: PROPOSAL #2





Project: WELD COUNTY, COLORADO (NAD 83)
Site: NW NW SEC. 22 T5N R61W 6th P.M.
Well: PRONGHORN 21-24-22HNB
Wellbore: ORIGINAL WELLBORE
Design: PROPOSAL #2

ANNOTATIONS

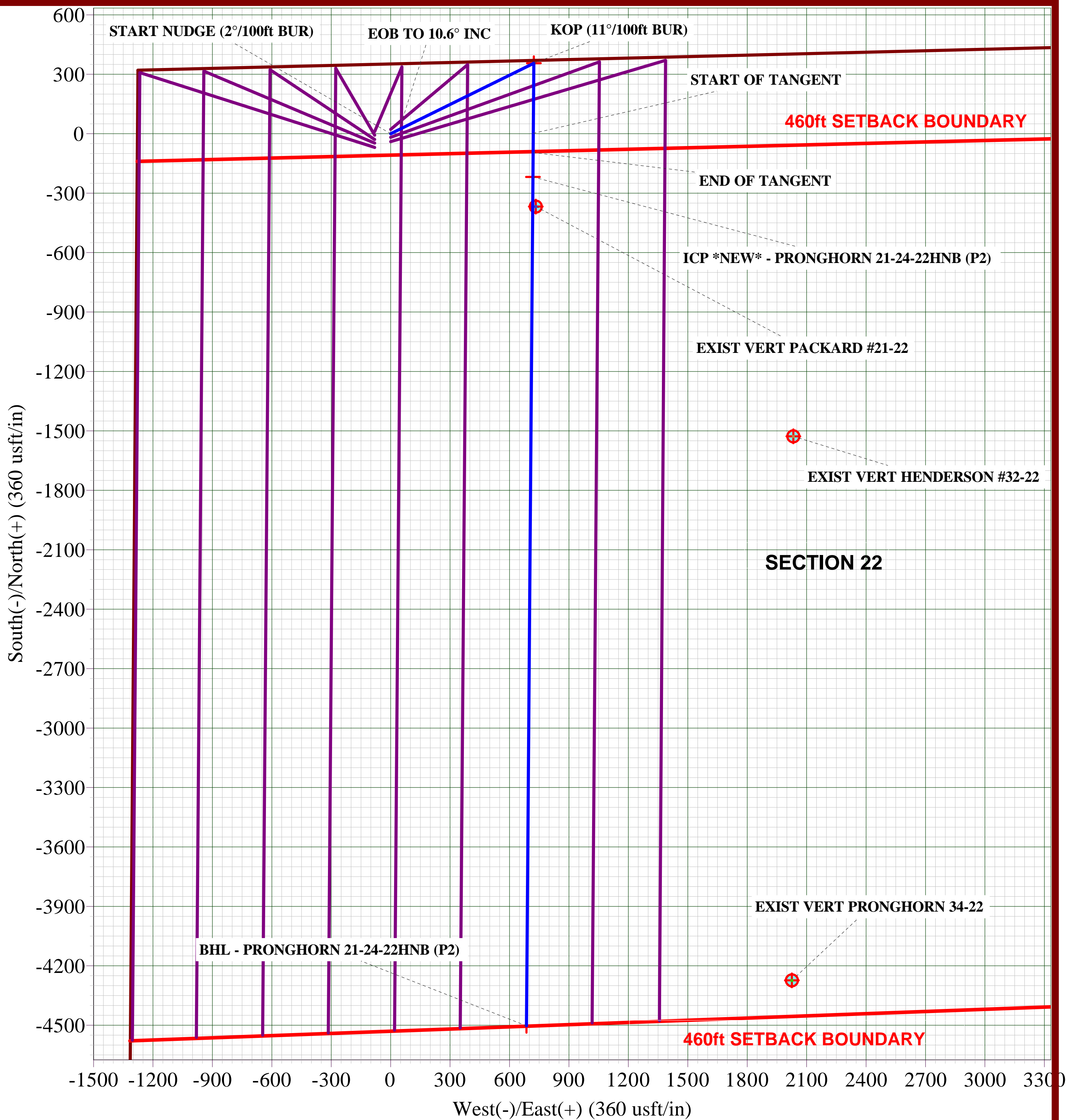
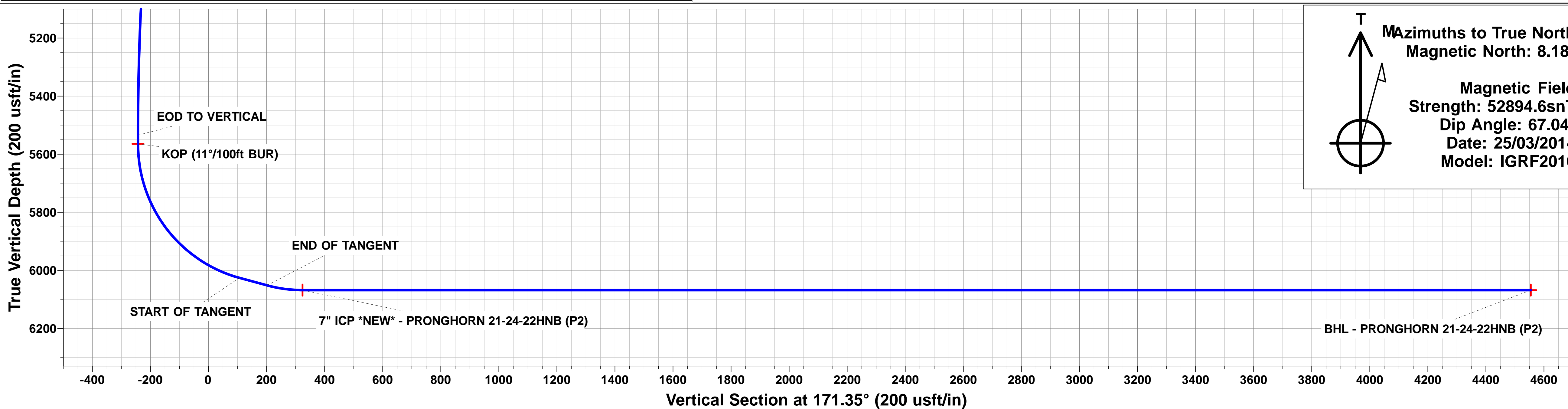
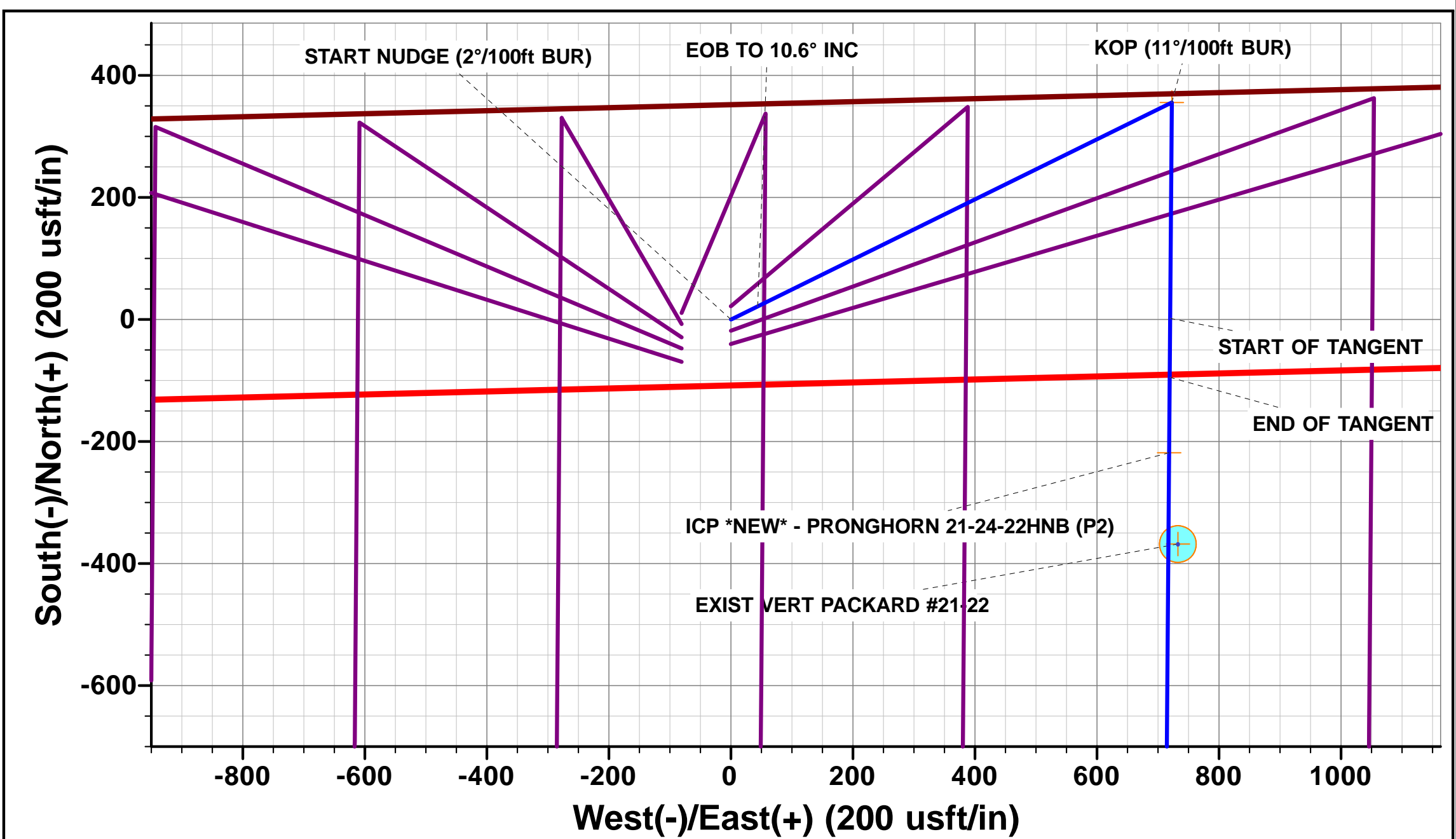
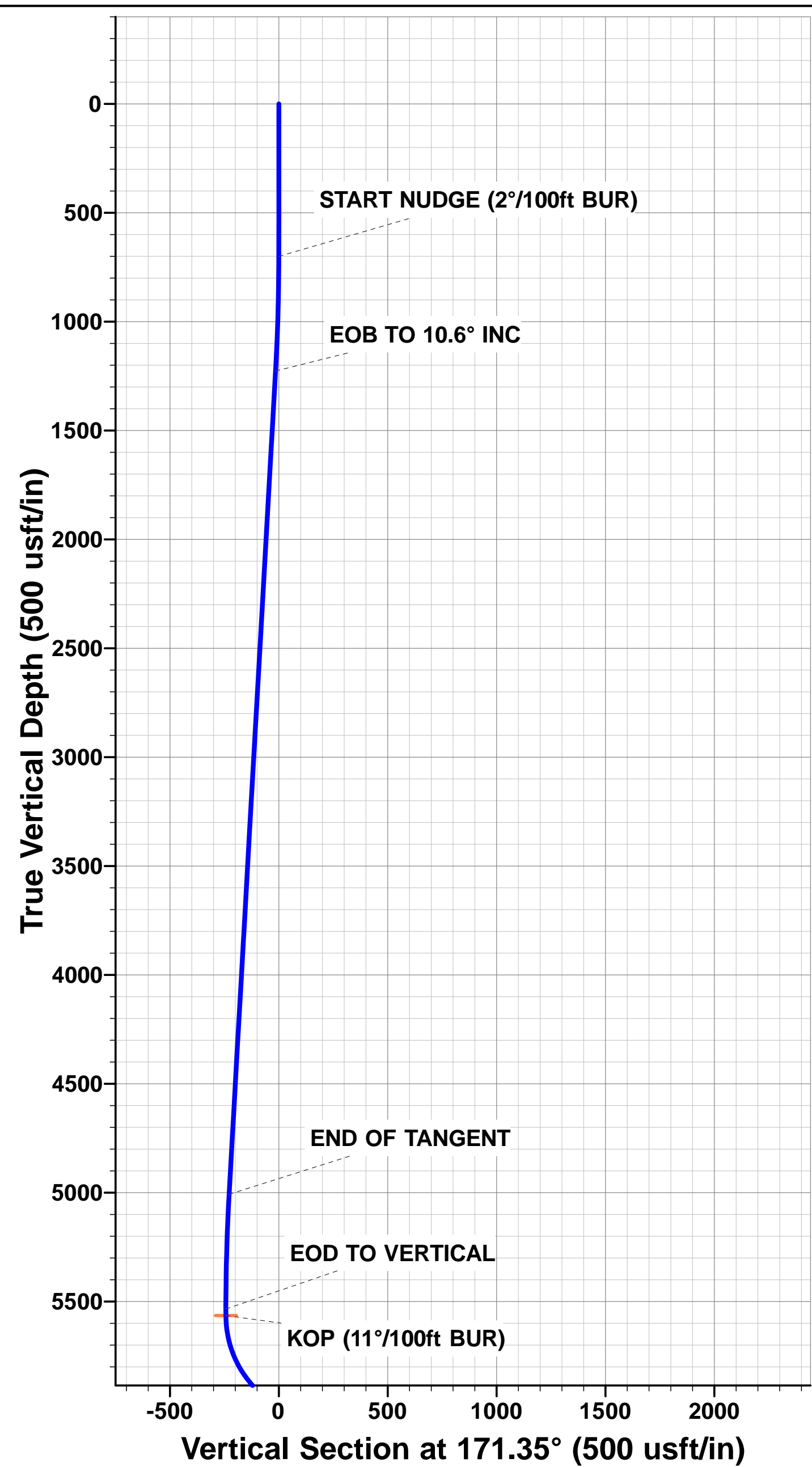
TVD	MD	Inc	Azi	+N/-S	+E/-W	VSect	Dep	Annotation
700.0	700.0	0.00	0.00	0.0	0.0	0.0	0.0	START NUDGE (2°/100ft BUR)
1227.1	1230.1	10.60	63.79	21.6	43.9	-14.7	48.9	EOB TO 10.6° INC
5007.6	5076.3	10.60	63.79	334.1	678.8	-228.2	756.6	END OF TANGENT
5534.7	5606.4	0.00	63.79	355.7	722.7	-242.9	805.5	EOD TO VERTICAL
5564.7	5636.4	0.00	0.00	355.7	722.7	-242.9	805.5	KOP (11°/100ft BUR)
6025.9	6261.4	75.00	180.44	1.8	720.0	106.5	1159.4	START OF TANGENT
6051.8	6361.4	75.00	180.44	-94.8	719.2	201.9	1256.0	END OF TANGENT
6068.0	6486.4	90.00	180.44	-218.3	718.3	323.9	1379.5	ICP *NEW* - PRONGHORN 21-24-22HNB (P2)
6068.0	10771.1	90.00	180.44	-4502.9	685.4	4554.7	5664.2	BHL - PRONGHORN 21-24-22HNB (P2)

LOCAL COORDINATES:

SHL: 352ft FNL & 1279ft FWL Sec 22
7" ICP *NEW*: ft 589ft FNL & 2000ft FWL Sec 22
BHL: 470ft FSL & 2000ft FWL Sec 22

WELLBORE TARGET DETAILS (LAT/LONG)

Name	TVD	+N/-S	+E/-W	Latitude	Longitude
KOP - PRONGHORN 21-24-22HNB (P2)	5564.7	355.7	722.7	40.393676	-104.197255
BHL - PRONGHORN 21-24-22HNB (P2)	6068.0	-4502.9	685.4	40.380340	-104.197390
7" ICP *NEW* - PRONGHORN 21-24-22HNB (P2)	6068.0	-218.3	718.3	40.392101	-104.197271



Planning Report



Database:	EDM 5000.1 Single User Db	Local Co-ordinate Reference:	Well PRONGHORN 21-24-22HNB
Company:	BONANZA CREEK ENERGY INC.	TVD Reference:	KB-EST @ 4678.0usft (Original Well Elev)
Project:	WELD COUNTY, COLORADO (NAD 83)	MD Reference:	KB-EST @ 4678.0usft (Original Well Elev)
Site:	NW NW SEC. 22 T5N R61W 6th P.M.	North Reference:	True
Well:	PRONGHORN 21-24-22HNB	Survey Calculation Method:	Minimum Curvature
Wellbore:	ORIGINAL WELLBORE		
Design:	PROPOSAL #2		

Project	WELD COUNTY, COLORADO (NAD 83)		
Map System:	US State Plane 1983	System Datum:	Mean Sea Level
Geo Datum:	North American Datum 1983		
Map Zone:	Colorado Northern Zone		Using geodetic scale factor

Site	NW NW SEC. 22 T5N R61W 6th P.M.				
Site Position:		Northing:	1,388,515.79 usft	Latitude:	40.392590
From:	Lat/Long	Easting:	3,362,131.84 usft	Longitude:	-104.199850
Position Uncertainty:	0.0 usft	Slot Radius:	1.10000ft	Grid Convergence:	0.84 °

Well	PRONGHORN 21-24-22HNB					
Well Position	+N/-S	40.1 usft	Northing:	1,388,555.85 usft	Latitude:	40.392700
	+E/-W	0.0 usft	Easting:	3,362,131.26 usft	Longitude:	-104.199850
Position Uncertainty		0.0 usft	Wellhead Elevation:	usft	Ground Level:	4,661.0 usft

Wellbore	ORIGINAL WELLBORE				
Magnetics	Model Name	Sample Date	Declination (°)	Dip Angle (°)	Field Strength (nT)
	IGRF2010	25/03/2014	8.18	67.04	52,895

Design	PROPOSAL #2			
Audit Notes:				
Version:	Phase:	PROTOTYPE	Tie On Depth:	0.0
Vertical Section:	Depth From (TVD) (usft)	+N/-S (usft)	+E/-W (usft)	Direction (°)
	0.0	0.0	0.0	171.35

Plan Sections											
MD (usft)	Inc (°)	Azi (°)	Vertical Depth	SS (usft)	+N/-S (usft)	+E/-W (usft)	Dogleg Rate (°/100usft)	Build Rate (°/100usft)	Turn Rate (°/100usft)	TFO (°)	Target
0.0	0.00	0.00	0.0	-4,678.0	0.0	0.0	0.00	0.00	0.00	0.00	
700.0	0.00	0.00	700.0	-3,978.0	0.0	0.0	0.00	0.00	0.00	0.00	
1,230.1	10.60	63.79	1,227.1	-3,450.9	21.6	43.9	2.00	2.00	0.00	63.79	
5,076.3	10.60	63.79	5,007.6	329.6	334.1	678.8	0.00	0.00	0.00	0.00	
5,606.4	0.00	0.00	5,534.7	856.7	355.7	722.7	2.00	-2.00	0.00	180.00	
5,636.4	0.00	0.00	5,564.7	886.7	355.7	722.7	0.00	0.00	0.00	0.00	KOP - PRONGHOF
6,261.4	75.00	180.44	6,025.9	1,347.9	1.8	720.0	12.00	12.00	0.00	180.44	
6,361.4	75.00	180.44	6,051.8	1,373.8	-94.8	719.2	0.00	0.00	0.00	0.00	
6,486.4	90.00	180.44	6,068.0	1,390.0	-218.3	718.3	12.00	12.00	0.00	0.00	
10,771.1	90.00	180.44	6,068.0	1,390.0	-4,502.9	685.4	0.00	0.00	0.00	0.00	BHL - PRONGHOR

Planning Report



Database:	EDM 5000.1 Single User Db	Local Co-ordinate Reference:	Well PRONGHORN 21-24-22HNB
Company:	BONANZA CREEK ENERGY INC.	TVD Reference:	KB-EST @ 4678.0usft (Original Well Elev)
Project:	WELD COUNTY, COLORADO (NAD 83)	MD Reference:	KB-EST @ 4678.0usft (Original Well Elev)
Site:	NW NW SEC. 22 T5N R61W 6th P.M.	North Reference:	True
Well:	PRONGHORN 21-24-22HNB	Survey Calculation Method:	Minimum Curvature
Wellbore:	ORIGINAL WELLBORE		
Design:	PROPOSAL #2		

Planned Survey

MD (usft)	Inc (°)	Azi (°)	TVD (usft)	SS (usft)	+N/-S (usft)	+E/-W (usft)	Vertical Section (usft)	Dogleg Rate (°/100usft)	Build Rate (°/100usft)	Turn Rate (°/100usft)
0.0	0.00	0.00	0.0	4,678.00	0.0	0.0	0.0	0.00	0.00	0.00
100.0	0.00	0.00	100.0	4,578.00	0.0	0.0	0.0	0.00	0.00	0.00
200.0	0.00	0.00	200.0	4,478.00	0.0	0.0	0.0	0.00	0.00	0.00
300.0	0.00	0.00	300.0	4,378.00	0.0	0.0	0.0	0.00	0.00	0.00
400.0	0.00	0.00	400.0	4,278.00	0.0	0.0	0.0	0.00	0.00	0.00
500.0	0.00	0.00	500.0	4,178.00	0.0	0.0	0.0	0.00	0.00	0.00
600.0	0.00	0.00	600.0	4,078.00	0.0	0.0	0.0	0.00	0.00	0.00
START NUDGE (2°/100ft BUR)										
700.0	0.00	0.00	700.0	3,978.00	0.0	0.0	0.0	0.00	0.00	0.00
800.0	2.00	63.79	800.0	3,878.02	0.8	1.6	-0.5	2.00	2.00	0.00
900.0	4.00	63.79	899.8	3,778.16	3.1	6.3	-2.1	2.00	2.00	0.00
1,000.0	6.00	63.79	999.5	3,678.55	6.9	14.1	-4.7	2.00	2.00	0.00
1,100.0	8.00	63.79	1,098.7	3,579.30	12.3	25.0	-8.4	2.00	2.00	0.00
1,200.0	10.00	63.79	1,197.5	3,480.53	19.2	39.0	-13.1	2.00	2.00	0.00
EOB TO 10.6° INC										
1,230.1	10.60	63.79	1,227.1	3,450.92	21.6	43.9	-14.7	2.00	2.00	0.00
1,300.0	10.60	63.79	1,295.8	3,382.21	27.3	55.4	-18.6	0.00	0.00	0.00
1,400.0	10.60	63.79	1,394.1	3,283.92	35.4	71.9	-24.2	0.00	0.00	0.00
1,500.0	10.60	63.79	1,492.4	3,185.63	43.5	88.4	-29.7	0.00	0.00	0.00
1,600.0	10.60	63.79	1,590.7	3,087.34	51.7	104.9	-35.3	0.00	0.00	0.00
1,700.0	10.60	63.79	1,689.0	2,989.04	59.8	121.5	-40.8	0.00	0.00	0.00
1,800.0	10.60	63.79	1,787.3	2,890.75	67.9	138.0	-46.4	0.00	0.00	0.00
1,900.0	10.60	63.79	1,885.5	2,792.46	76.0	154.5	-51.9	0.00	0.00	0.00
2,000.0	10.60	63.79	1,983.8	2,694.16	84.2	171.0	-57.5	0.00	0.00	0.00
2,100.0	10.60	63.79	2,082.1	2,595.87	92.3	187.5	-63.0	0.00	0.00	0.00
2,200.0	10.60	63.79	2,180.4	2,497.58	100.4	204.0	-68.6	0.00	0.00	0.00
2,300.0	10.60	63.79	2,278.7	2,399.29	108.5	220.5	-74.1	0.00	0.00	0.00
2,400.0	10.60	63.79	2,377.0	2,300.99	116.7	237.0	-79.7	0.00	0.00	0.00
2,500.0	10.60	63.79	2,475.3	2,202.70	124.8	253.5	-85.2	0.00	0.00	0.00
2,600.0	10.60	63.79	2,573.6	2,104.41	132.9	270.0	-90.8	0.00	0.00	0.00
2,700.0	10.60	63.79	2,671.9	2,006.12	141.0	286.5	-96.3	0.00	0.00	0.00
2,800.0	10.60	63.79	2,770.2	1,907.82	149.2	303.0	-101.9	0.00	0.00	0.00
2,900.0	10.60	63.79	2,868.5	1,809.53	157.3	319.6	-107.4	0.00	0.00	0.00
3,000.0	10.60	63.79	2,966.8	1,711.24	165.4	336.1	-113.0	0.00	0.00	0.00
3,100.0	10.60	63.79	3,065.1	1,612.94	173.5	352.6	-118.5	0.00	0.00	0.00
3,200.0	10.60	63.79	3,163.3	1,514.65	181.7	369.1	-124.0	0.00	0.00	0.00
3,300.0	10.60	63.79	3,261.6	1,416.36	189.8	385.6	-129.6	0.00	0.00	0.00
3,400.0	10.60	63.79	3,359.9	1,318.07	197.9	402.1	-135.1	0.00	0.00	0.00
3,500.0	10.60	63.79	3,458.2	1,219.77	206.0	418.6	-140.7	0.00	0.00	0.00
3,600.0	10.60	63.79	3,556.5	1,121.48	214.2	435.1	-146.2	0.00	0.00	0.00
3,700.0	10.60	63.79	3,654.8	1,023.19	222.3	451.6	-151.8	0.00	0.00	0.00
3,800.0	10.60	63.79	3,753.1	924.90	230.4	468.1	-157.3	0.00	0.00	0.00
3,900.0	10.60	63.79	3,851.4	826.60	238.5	484.6	-162.9	0.00	0.00	0.00
4,000.0	10.60	63.79	3,949.7	728.31	246.7	501.1	-168.4	0.00	0.00	0.00
4,100.0	10.60	63.79	4,048.0	630.02	254.8	517.7	-174.0	0.00	0.00	0.00
4,200.0	10.60	63.79	4,146.3	531.72	262.9	534.2	-179.5	0.00	0.00	0.00
4,300.0	10.60	63.79	4,244.6	433.43	271.0	550.7	-185.1	0.00	0.00	0.00
4,400.0	10.60	63.79	4,342.9	335.14	279.2	567.2	-190.6	0.00	0.00	0.00
4,500.0	10.60	63.79	4,441.2	236.85	287.3	583.7	-196.2	0.00	0.00	0.00
4,600.0	10.60	63.79	4,539.4	138.55	295.4	600.2	-201.7	0.00	0.00	0.00
4,700.0	10.60	63.79	4,637.7	40.26	303.5	616.7	-207.3	0.00	0.00	0.00
4,800.0	10.60	63.79	4,736.0	-58.03	311.7	633.2	-212.8	0.00	0.00	0.00
4,900.0	10.60	63.79	4,834.3	-156.32	319.8	649.7	-218.4	0.00	0.00	0.00
5,000.0	10.60	63.79	4,932.6	-254.62	327.9	666.2	-223.9	0.00	0.00	0.00

Planning Report



Database:	EDM 5000.1 Single User Db	Local Co-ordinate Reference:	Well PRONGHORN 21-24-22HNB
Company:	BONANZA CREEK ENERGY INC.	TVD Reference:	KB-EST @ 4678.0usft (Original Well Elev)
Project:	WELD COUNTY, COLORADO (NAD 83)	MD Reference:	KB-EST @ 4678.0usft (Original Well Elev)
Site:	NW NW SEC. 22 T5N R61W 6th P.M.	North Reference:	True
Well:	PRONGHORN 21-24-22HNB	Survey Calculation Method:	Minimum Curvature
Wellbore:	ORIGINAL WELLBORE		
Design:	PROPOSAL #2		

Planned Survey

MD (usft)	Inc (°)	Azi (°)	TVD (usft)	SS (usft)	+N/-S (usft)	+E/-W (usft)	Vertical Section (usft)	Dogleg Rate (°/100usft)	Build Rate (°/100usft)	Turn Rate (°/100usft)
END OF TANGENT										
5,076.3	10.60	63.79	5,007.6	-329.61	334.1	678.8	-228.2	0.00	0.00	0.00
5,100.0	10.13	63.79	5,030.9	-352.93	336.0	682.6	-229.4	2.00	-2.00	0.00
5,200.0	8.13	63.79	5,129.7	-451.66	343.0	696.9	-234.2	2.00	-2.00	0.00
5,300.0	6.13	63.79	5,228.9	-550.88	348.5	708.0	-238.0	2.00	-2.00	0.00
5,400.0	4.13	63.79	5,328.5	-650.47	352.4	716.0	-240.7	2.00	-2.00	0.00
5,500.0	2.13	63.79	5,428.3	-750.32	354.8	720.9	-242.3	2.00	-2.00	0.00
5,600.0	0.13	63.79	5,528.3	-850.29	355.7	722.7	-242.9	2.00	-2.00	0.00
EOD TO VERTICAL										
5,606.4	0.00	63.79	5,534.7	-856.69	355.7	722.7	-242.9	2.00	-2.00	0.00
KOP (11°/100ft BUR)										
5,636.4	0.00	0.00	5,564.7	-886.69	355.7	722.7	-242.9	0.00	0.00	0.00
5,700.0	7.63	180.44	5,628.1	-950.11	351.5	722.7	-238.7	12.00	12.00	0.00
5,800.0	19.63	180.44	5,725.1	-1,047.11	327.9	722.5	-215.5	12.00	12.00	0.00
5,900.0	31.63	180.44	5,815.1	-1,137.11	284.8	722.2	-172.9	12.00	12.00	0.00
6,000.0	43.63	180.44	5,894.2	-1,216.16	223.8	721.7	-112.7	12.00	12.00	0.00
6,100.0	55.63	180.44	5,958.8	-1,280.81	147.8	721.1	-37.6	12.00	12.00	0.00
6,200.0	67.63	180.44	6,006.2	-1,328.24	59.9	720.4	49.1	12.00	12.00	0.00
START OF TANGENT										
6,261.4	75.00	180.44	6,025.9	-1,347.89	1.8	720.0	106.5	12.00	12.00	0.00
6,300.0	75.00	180.44	6,035.9	-1,357.88	-35.5	719.7	143.3	0.00	0.00	0.00
END OF TANGENT										
6,361.4	75.00	180.44	6,051.8	-1,373.78	-94.8	719.2	201.9	0.00	0.00	0.00
6,400.0	79.63	180.44	6,060.2	-1,382.25	-132.4	719.0	239.1	12.00	12.00	0.00
ICP *NEW* - PRONGHORN 21-24-22HNB (P2)										
6,486.4	90.00	180.44	6,068.0	-1,390.05	-218.3	718.3	323.9	12.00	12.00	0.00
6,500.0	90.00	180.44	6,068.0	-1,390.05	-231.9	718.2	337.4	0.00	0.00	0.00
6,600.0	90.00	180.44	6,068.0	-1,390.05	-331.9	717.4	436.1	0.00	0.00	0.00
6,700.0	90.00	180.44	6,068.0	-1,390.05	-431.9	716.7	534.8	0.00	0.00	0.00
6,800.0	90.00	180.44	6,068.0	-1,390.05	-531.9	715.9	633.6	0.00	0.00	0.00
6,900.0	90.00	180.44	6,068.0	-1,390.05	-631.9	715.1	732.3	0.00	0.00	0.00
7,000.0	90.00	180.44	6,068.0	-1,390.05	-731.9	714.3	831.1	0.00	0.00	0.00
7,100.0	90.00	180.44	6,068.0	-1,390.05	-831.9	713.6	929.8	0.00	0.00	0.00
7,200.0	90.00	180.44	6,068.0	-1,390.05	-931.9	712.8	1,028.6	0.00	0.00	0.00
7,300.0	90.00	180.44	6,068.0	-1,390.05	-1,031.9	712.0	1,127.3	0.00	0.00	0.00
7,400.0	90.00	180.44	6,068.0	-1,390.05	-1,131.9	711.3	1,226.0	0.00	0.00	0.00
7,500.0	90.00	180.44	6,068.0	-1,390.05	-1,231.9	710.5	1,324.8	0.00	0.00	0.00
7,600.0	90.00	180.44	6,068.0	-1,390.05	-1,331.9	709.7	1,423.5	0.00	0.00	0.00
7,700.0	90.00	180.44	6,068.0	-1,390.05	-1,431.9	709.0	1,522.3	0.00	0.00	0.00
7,800.0	90.00	180.44	6,068.0	-1,390.05	-1,531.9	708.2	1,621.0	0.00	0.00	0.00
7,900.0	90.00	180.44	6,068.0	-1,390.05	-1,631.9	707.4	1,719.8	0.00	0.00	0.00
8,000.0	90.00	180.44	6,068.0	-1,390.05	-1,731.9	706.7	1,818.5	0.00	0.00	0.00
8,100.0	90.00	180.44	6,068.0	-1,390.05	-1,831.9	705.9	1,917.2	0.00	0.00	0.00
8,200.0	90.00	180.44	6,068.0	-1,390.05	-1,931.9	705.1	2,016.0	0.00	0.00	0.00
8,300.0	90.00	180.44	6,068.0	-1,390.05	-2,031.9	704.4	2,114.7	0.00	0.00	0.00
8,400.0	90.00	180.44	6,068.0	-1,390.05	-2,131.9	703.6	2,213.5	0.00	0.00	0.00
8,500.0	90.00	180.44	6,068.0	-1,390.05	-2,231.9	702.8	2,312.2	0.00	0.00	0.00
8,600.0	90.00	180.44	6,068.0	-1,390.05	-2,331.9	702.1	2,411.0	0.00	0.00	0.00
8,700.0	90.00	180.44	6,068.0	-1,390.05	-2,431.9	701.3	2,509.7	0.00	0.00	0.00
8,800.0	90.00	180.44	6,068.0	-1,390.05	-2,531.9	700.5	2,608.4	0.00	0.00	0.00
8,900.0	90.00	180.44	6,068.0	-1,390.05	-2,631.9	699.8	2,707.2	0.00	0.00	0.00
9,000.0	90.00	180.44	6,068.0	-1,390.05	-2,731.9	699.0	2,805.9	0.00	0.00	0.00
9,100.0	90.00	180.44	6,068.0	-1,390.05	-2,831.9	698.2	2,904.7	0.00	0.00	0.00

Planning Report



Database:	EDM 5000.1 Single User Db	Local Co-ordinate Reference:	Well PRONGHORN 21-24-22HNB
Company:	BONANZA CREEK ENERGY INC.	TVD Reference:	KB-EST @ 4678.0usft (Original Well Elev)
Project:	WELD COUNTY, COLORADO (NAD 83)	MD Reference:	KB-EST @ 4678.0usft (Original Well Elev)
Site:	NW NW SEC. 22 T5N R61W 6th P.M.	North Reference:	True
Well:	PRONGHORN 21-24-22HNB	Survey Calculation Method:	Minimum Curvature
Wellbore:	ORIGINAL WELLBORE		
Design:	PROPOSAL #2		

Planned Survey										
MD (usft)	Inc (°)	Azi (°)	TVD (usft)	SS (usft)	+N/-S (usft)	+E/-W (usft)	Vertical Section (usft)	Dogleg Rate (°/100usft)	Build Rate (°/100usft)	Turn Rate (°/100usft)
9,200.0	90.00	180.44	6,068.0	-1,390.05	-2,931.9	697.5	3,003.4	0.00	0.00	0.00
9,300.0	90.00	180.44	6,068.0	-1,390.05	-3,031.9	696.7	3,102.2	0.00	0.00	0.00
9,400.0	90.00	180.44	6,068.0	-1,390.05	-3,131.8	695.9	3,200.9	0.00	0.00	0.00
9,500.0	90.00	180.44	6,068.0	-1,390.05	-3,231.8	695.1	3,299.7	0.00	0.00	0.00
9,600.0	90.00	180.44	6,068.0	-1,390.05	-3,331.8	694.4	3,398.4	0.00	0.00	0.00
9,700.0	90.00	180.44	6,068.0	-1,390.05	-3,431.8	693.6	3,497.1	0.00	0.00	0.00
9,800.0	90.00	180.44	6,068.0	-1,390.05	-3,531.8	692.8	3,595.9	0.00	0.00	0.00
9,900.0	90.00	180.44	6,068.0	-1,390.05	-3,631.8	692.1	3,694.6	0.00	0.00	0.00
10,000.0	90.00	180.44	6,068.0	-1,390.05	-3,731.8	691.3	3,793.4	0.00	0.00	0.00
10,100.0	90.00	180.44	6,068.0	-1,390.05	-3,831.8	690.5	3,892.1	0.00	0.00	0.00
10,200.0	90.00	180.44	6,068.0	-1,390.05	-3,931.8	689.8	3,990.9	0.00	0.00	0.00
10,300.0	90.00	180.44	6,068.0	-1,390.05	-4,031.8	689.0	4,089.6	0.00	0.00	0.00
10,400.0	90.00	180.44	6,068.0	-1,390.05	-4,131.8	688.2	4,188.3	0.00	0.00	0.00
10,500.0	90.00	180.44	6,068.0	-1,390.05	-4,231.8	687.5	4,287.1	0.00	0.00	0.00
10,600.0	90.00	180.44	6,068.0	-1,390.05	-4,331.8	686.7	4,385.8	0.00	0.00	0.00
10,700.0	90.00	180.44	6,068.0	-1,390.05	-4,431.8	685.9	4,484.6	0.00	0.00	0.00
BHL - PRONGHORN 21-24-22HNB (P2)										
10,771.1	90.00	180.44	6,068.0	-1,390.00	-4,502.9	685.4	4,554.7	0.00	0.00	0.00

Plan Annotations				
MD (usft)	TVD (usft)	Local Coordinates		Comment
		+N/-S (usft)	+E/-W (usft)	
700.0	700.0	0.0	0.0	START NUDGE (2°/100ft BUR)
1,230.1	1,227.1	21.6	43.9	EOB TO 10.6° INC
5,076.3	5,007.6	334.1	678.8	END OF TANGENT
5,606.4	5,534.7	355.7	722.7	EOD TO VERTICAL
5,636.4	5,564.7	355.7	722.7	KOP (11°/100ft BUR)
6,261.4	6,025.9	1.8	720.0	START OF TANGENT
6,361.4	6,051.8	-94.8	719.2	END OF TANGENT
6,486.4	6,068.0	-218.3	718.3	ICP *NEW* - PRONGHORN 21-24-22HNB (P2)
10,771.1	6,068.0	-4,502.9	685.4	BHL - PRONGHORN 21-24-22HNB (P2)