

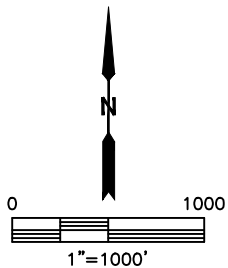
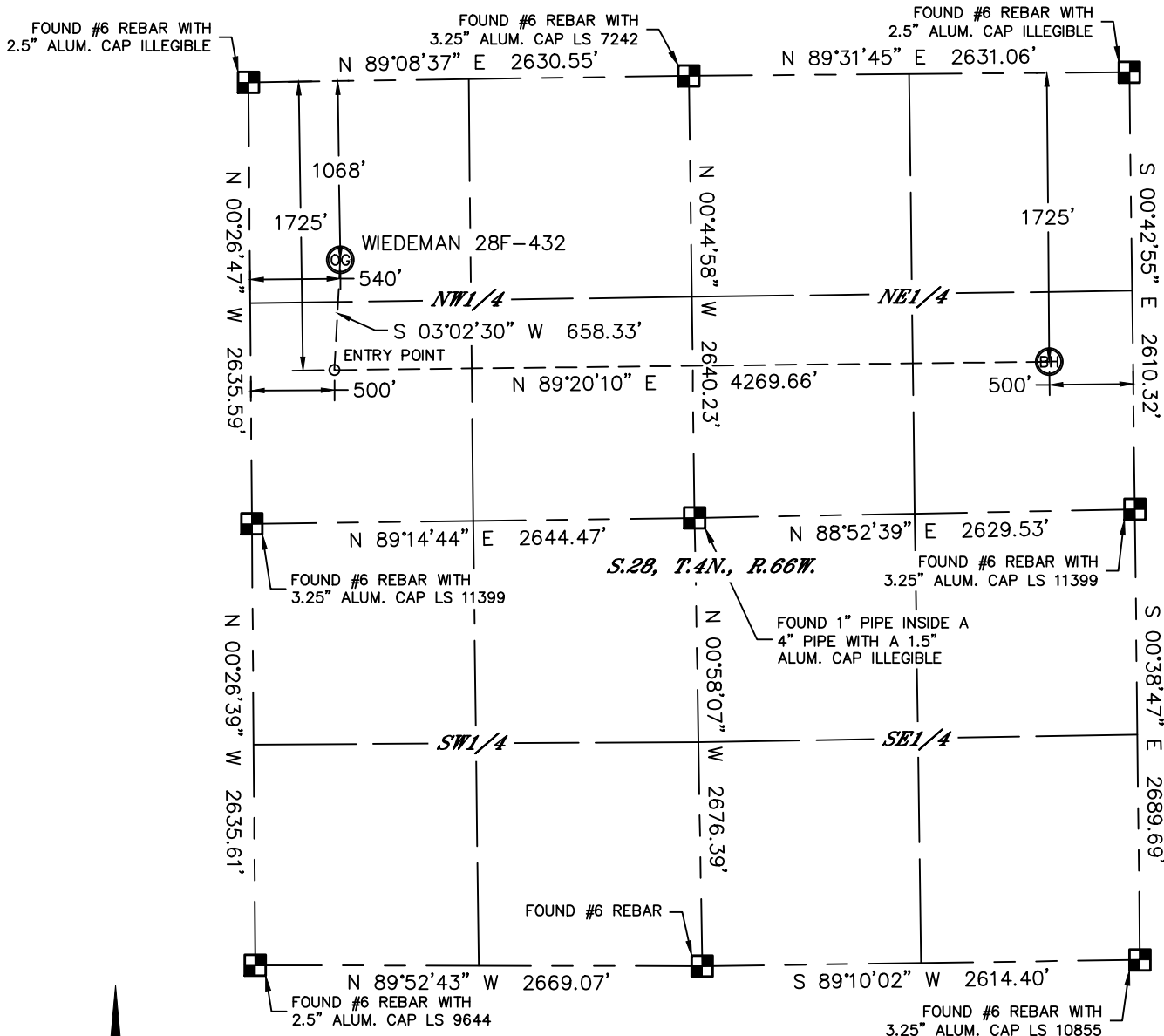


Lat40°, Inc. 1635 Foxtrail Drive, Suite 325 Loveland, CO 970-776-3321

# WELL LOCATION CERTIFICATE

THIS MAP DOES NOT REPRESENT A BOUNDARY SURVEY

SECTION: 28  
TOWNSHIP: 4N  
RANGE: 66W



In accordance with a request from Mac Neumann with PDC ENERGY Lat40°, Inc. has determined the surface location of the WEDEMAN 28F-432 to be 1068' from the NORTH line and 540' from the WEST line and the bottom hole to be 1725' from the NORTH line and 500' from the EAST line as measured at right angles from the section lines of Section 28, Township 4 North, Range 66 West of the Sixth Principal Meridian, County of Weld, State of Colorado.

I hereby state that this Well Location Certificate was prepared by me, or under my direct supervision, that the fieldwork was completed on 6/25/2014, for and on behalf of PDC ENERGY. That this is not a Land Survey Plat or an Improvement Survey Plat, and that it is not to be relied upon for establishment of fence, building, or other future improvement lines.

#### NOTE:

- 1) Bearings shown are Grid Bearings of the Colorado State Plane Coordinate System, North Zone, North American Datum 1983. The lineal dimensions as contained herein are based upon the "U.S. Survey Foot."
- 2) Ground elevations are based on an observed GPS elevation (NAVD 1988 DATUM).
- 3) IMPROVEMENTS: See LOCATION DRAWING for all visible improvements within 500' of disturbed area.
- 4) SURFACE USE: CROP LAND
- 5) INSTRUMENT OPERATOR: ADAM KELLY
- 6) NEAREST CULTURAL ITEMS:  
BUILDING: ±716' SW  
BUILDING UNIT: ±738' SW  
HIGH OCCUPANCY BUILDING UNIT: ±3075' NE  
DESIGNATED OUTSIDE ACTIVITY AREA: 5280'+  
PUBLIC ROAD: (CR 29) 514' W  
ABOVEGROUND UTILITY: 505' W  
RAILROAD: ±4122' SE  
PROPERTY LINE: 473' S

#### SURFACE LOCATION

LAT: 40.28692°N  
LONG: 104.78997°W  
PDOP: 1.9  
ELEV: 4762'  
1/4,1/4: NWNW

#### BOTTOM HOLE

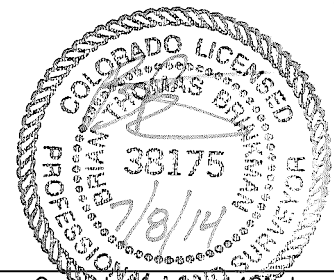
LAT: 40.28516°N  
LONG: 104.77482°W

#### ENTRY POINT

LAT: 40.28512°N  
LONG: 104.79012°W

#### LEGEND

- = ALIQUOT MONUMENT AS DESCRIBED  
○ = CALCULATED POSITION



Brian T. Brinkman—On behalf of Lat40°, Inc.  
Colorado Licensed Professional Land Surveyor No. 38175  
DATE: 7/8/2014  
PROJECT#: 2014114

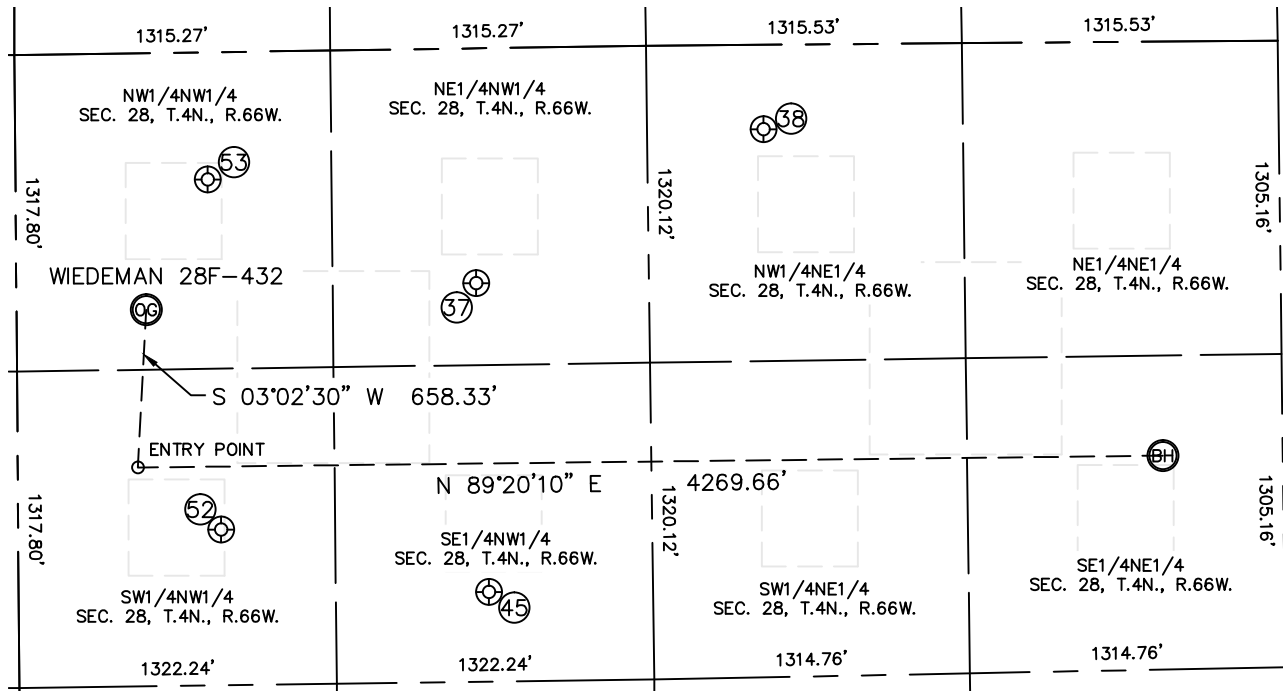


Lat40°, Inc. 1635 Foxtrail Drive, Suite 325 Loveland, CO 970-776-3321

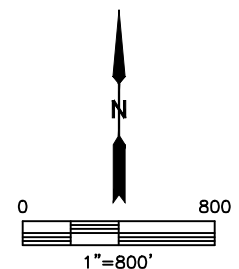
# SITE SKETCH

WIEDEMAN 28F-432

SECTION: 28  
TOWNSHIP: 4N  
RANGE: 66W



WELL NO.	WELL NAME	SHL FOOTAGE				SHL LAT°	SHL LONG°	PDOP	ELEV (FT.)	1/4/1/4
37	COGBURN 21-28	979	FNL	1916	FWL	40.28719	-104.78504	1.8	4754	NENW
38	GILCREST TOWNSITE 28-12	352	FNL	2146	FWL	40.28893	-104.78074	1.7	4748	NWNE
45	KEISER 22-28	2266	FNL	1959	FWL	40.28366	-104.78489	1.8	4749	SENW
52	KORWICK 5-28	1990	FNL	845	FWL	40.28440	-104.78888	2.1	4758	SWNW
53	LODWICK 4-28	530	FNL	800	FWL	40.28840	-104.78904	2.0	4759	NWNW



DATE: 7/8/2014  
PROJECT#: 2014114