

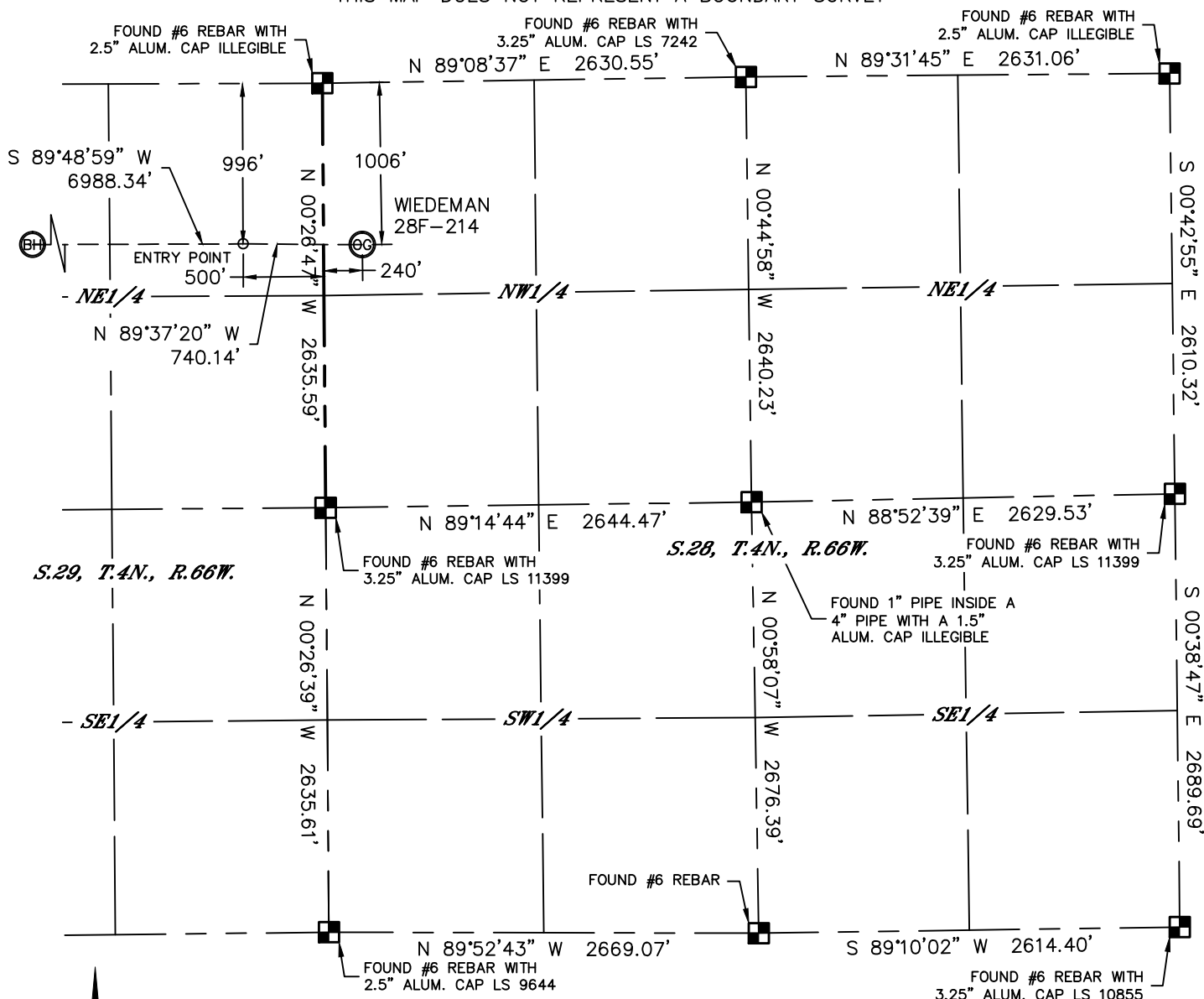


Lat40°, Inc. 1635 Foxtrail Drive, Suite 325 Loveland, CO 970-776-3321

WELL LOCATION CERTIFICATE

THIS MAP DOES NOT REPRESENT A BOUNDARY SURVEY

SECTION: 28
TOWNSHIP: 4N
RANGE: 66W



In accordance with a request from Mac Neumann with PDC ENERGY Lat40°, Inc. has determined the surface location of the WIEDEMAN 28F-214 to be 1006' from the NORTH line and 240' from the WEST line as measured at right angles from the section lines of Section 28, Township 4 North, Range 66 West and the bottom hole to be 996' from the NORTH line and 2163' from the EAST line as measured at right angles from the section lines of Section 30, Township 4 North, Range 66 West of the Sixth Principal Meridian, County of Weld, State of Colorado.

I hereby state that this Well Location Certificate was prepared by me, or under my direct supervision, that the fieldwork was completed on 6/25/2014, for and on behalf of PDC ENERGY. That this is not a Land Survey Plat or an Improvement Survey Plat, and that it is not to be relied upon for establishment of fence, building, or other future improvement lines.

NOTE:

- 1) Bearings shown are Grid Bearings of the Colorado State Plane Coordinate System, North Zone, North American Datum 1983. The lined dimensions as contained herein are based upon the "U.S. Survey Foot."
- 2) Ground elevations are based on an observed GPS elevation (NAVD 1988 DATUM).
- 3) IMPROVEMENTS: See LOCATION DRAWING for all visible improvements within 500' of disturbed area.
- 4) SURFACE USE: CROP LAND
- 5) INSTRUMENT OPERATOR: ADAM KELLY
- 6) NEAREST CULTURAL ITEMS:
BUILDING: ±656' SW
BUILDING UNIT: ±714' SW
HIGH OCCUPANCY BUILDING UNIT: ±3374' E
DESIGNATED OUTSIDE ACTIVITY AREA: 5280'+
PUBLIC ROAD: (CR 29) 214' W
ABOVEGROUND UTILITY: 205' W
RAILROAD: ±4388' SE
PROPERTY LINE: 240' W

SURFACE LOCATION

LAT: 40.28709°N
LONG: 104.79105°W
PDOP: 1.8
ELEV: 4763'
1/4,1/4: NWNW

ENTRY POINT

LAT: 40.28712°N
LONG: 104.79370°W

BOTTOM HOLE

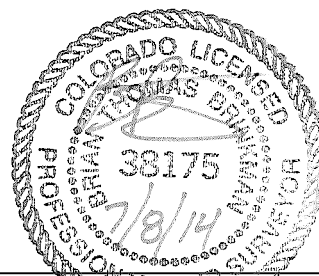
LAT: 40.28720°N
LONG: 104.81874°W

LEGEND

- = ALIQUOT MONUMENT AS DESCRIBED
○ = CALCULATED POSITION

SHEET 1 OF 3

Brian T. Brinkman—On behalf of Lat40°, Inc.
Colorado Licensed Professional Land Surveyor No. 38175
DATE: 7/8/2014
PROJECT#: 2014114



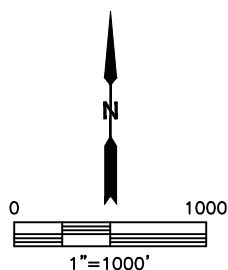
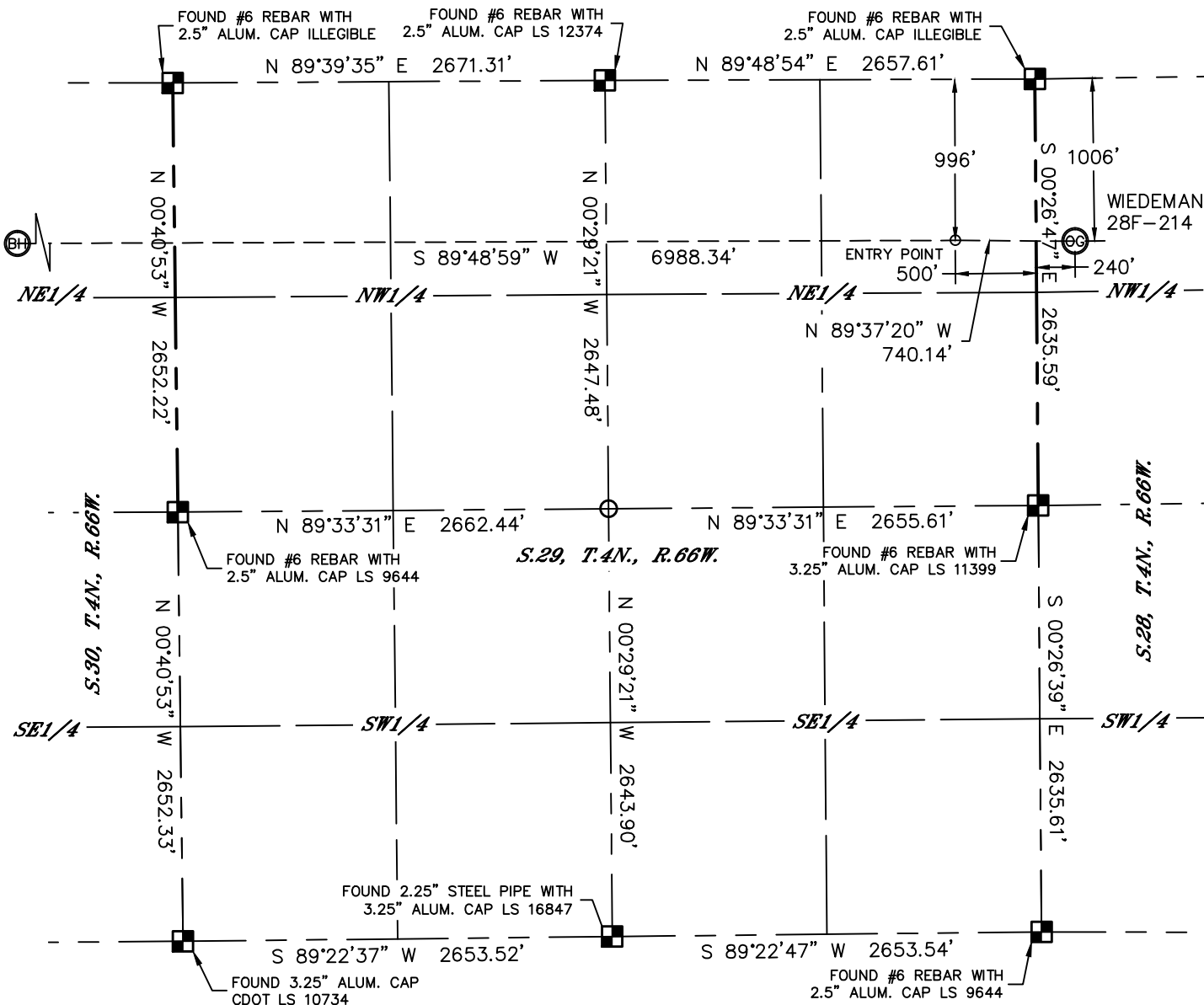


Lat40°, Inc. 1635 Foxtrail Drive, Suite 325 Loveland, CO 970-776-3321

WELL LOCATION CERTIFICATE

THIS MAP DOES NOT REPRESENT A BOUNDARY SURVEY

SECTION: 28
TOWNSHIP: 4N
RANGE: 66W

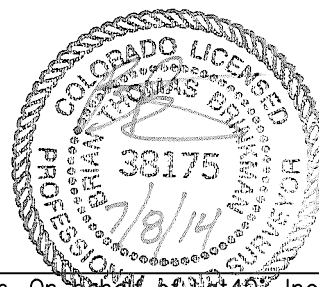


LEGEND

- = ALIQUOT MONUMENT AS DESCRIBED
- = CALCULATED POSITION

SHEET 2 OF 3

Brian T. Brinkman—On behalf of Lat40°, Inc.
Colorado Licensed Professional Land Surveyor No. 38175
DATE: 7/8/2014
PROJECT#: 2014114



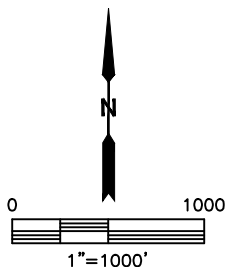
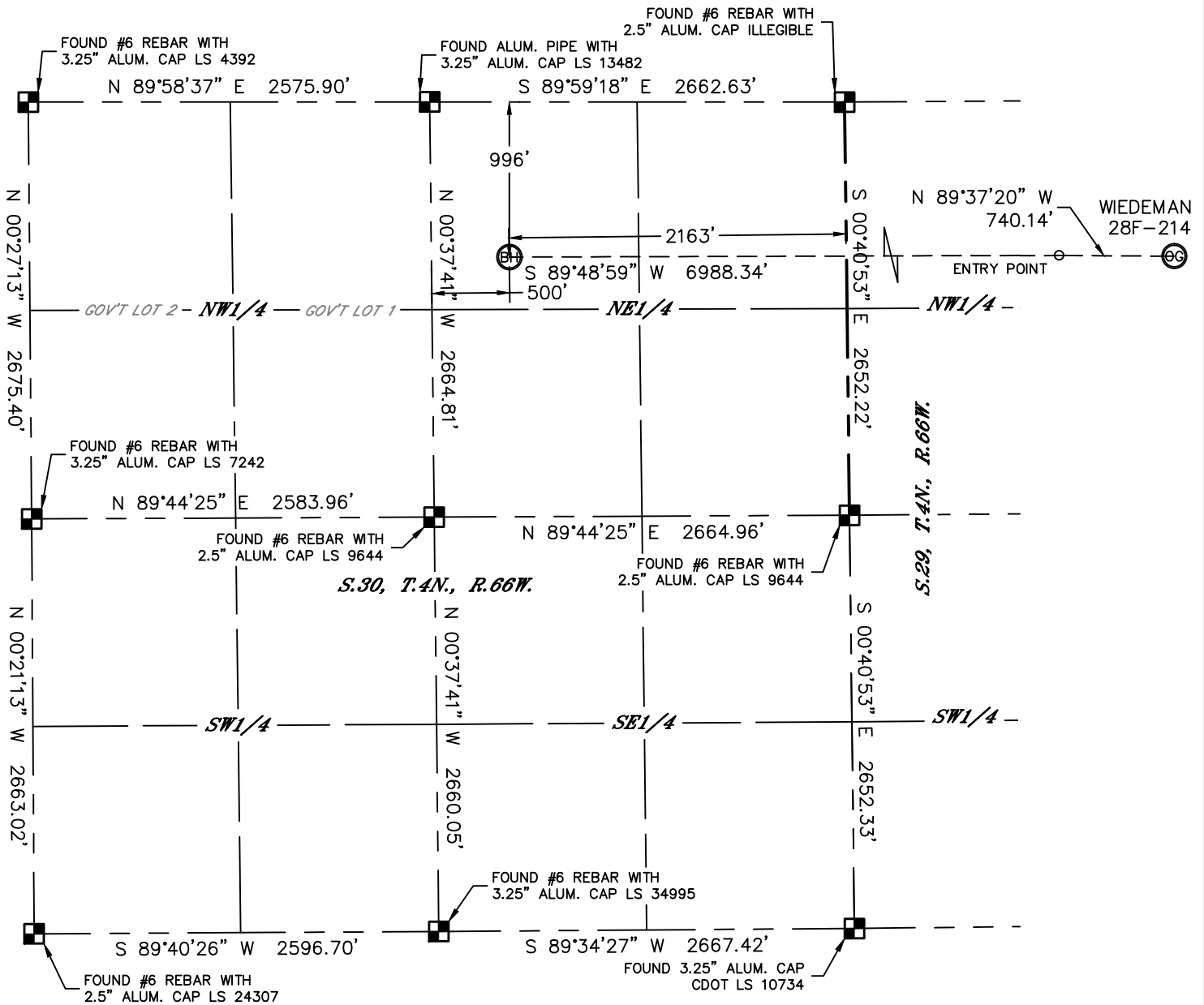


Lat40°, Inc. 1635 Foxtrail Drive, Suite 325 Loveland, CO 970-776-3321

WELL LOCATION CERTIFICATE

THIS MAP DOES NOT REPRESENT A BOUNDARY SURVEY

SECTION: 28
TOWNSHIP: 4N
RANGE: 66W

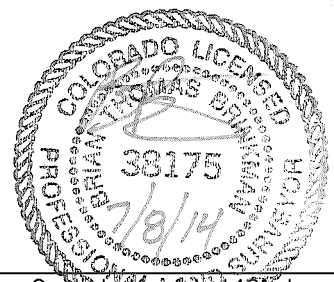


LEGEND

- = ALIQUOT MONUMENT AS DESCRIBED
- = CALCULATED POSITION

SHEET 3 OF 3

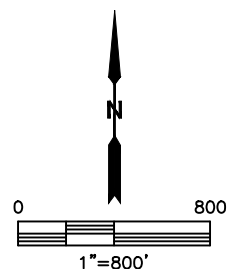
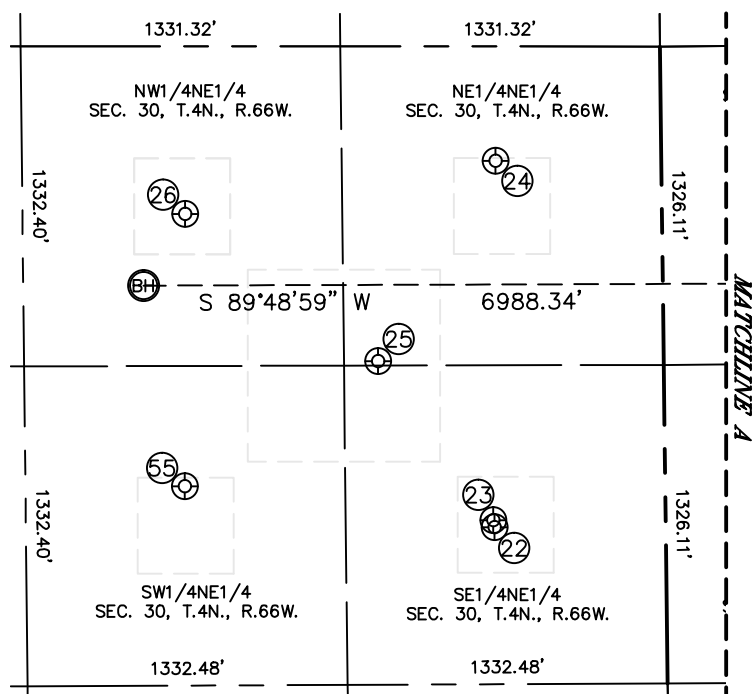
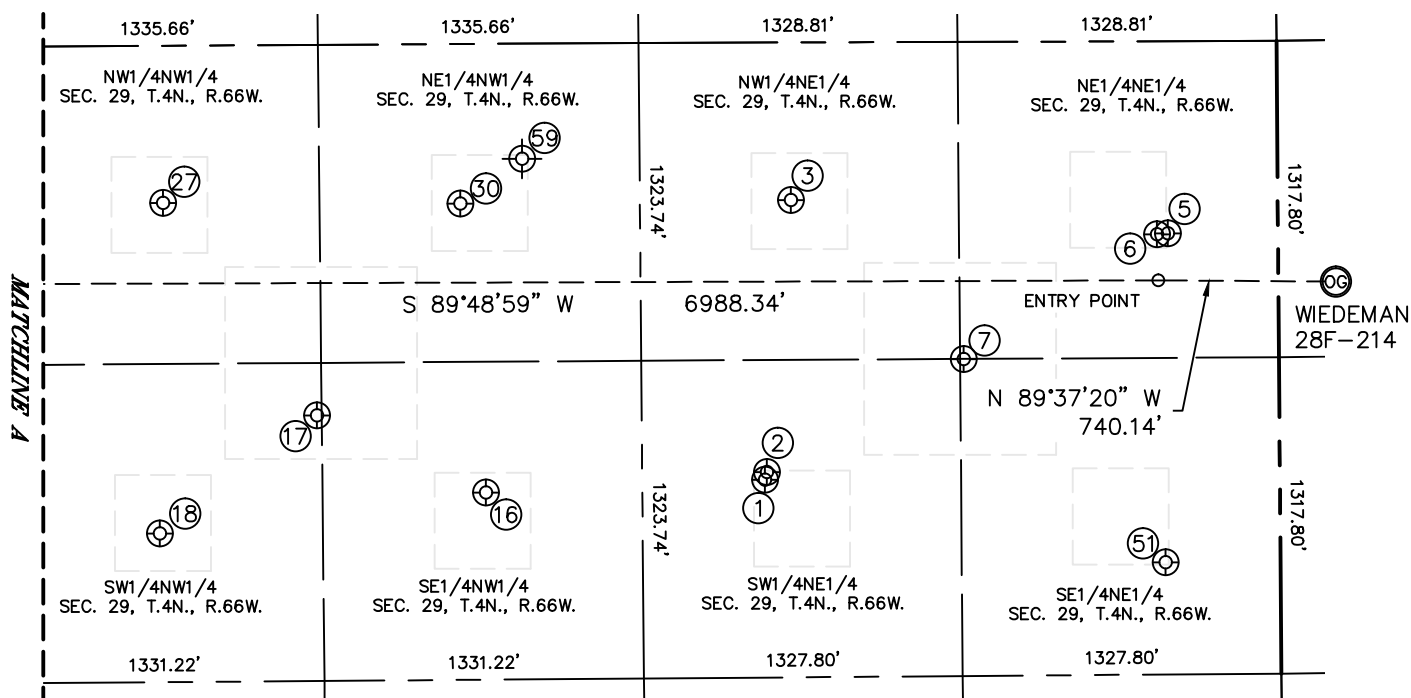
Brian T. Brinkman—On behalf of Lat40°, Inc.
Colorado Licensed Professional Land Surveyor No. 38175
DATE: 7/8/2014
PROJECT#: 2014114



SITE SKETCH

WIEDEMAN 28F-214

SECTION: 28
TOWNSHIP: 4N
RANGE: 66W





Lat40°, Inc. 1635 Foxtrail Drive, Suite 325 Loveland, CO 970-776-3321

SITE SKETCH

WIEDEMAN 28F-214

SECTION: 28
TOWNSHIP: 4N
RANGE: 66W

WELL NO.	WELL NAME	SHL FOOTAGE				SHL LAT°	SHL LONG°	PDOP	ELEV (FT.)	1/4/1/4
1	MCLEOD 7	1821	FNL	2145	FEL	40.28487	-104.79960	2.0	4760	SWNE
2	MCLEOD 29-13	1790	FNL	2138	FEL	40.28496	-104.79957	2.0	4760	SWNE
3	TOLLGATE 29-12	657	FNL	2029	FEL	40.28807	-104.79918	1.7	4757	NWNE
5	MCLEOD 1-29B	800	FNL	459	FEL	40.28765	-104.79355	1.9	4766	NENE
6	MCLEOD 1	804	FNL	505	FEL	40.28764	-104.79372	1.9	4766	NENE
7	MCLEOD 5	1321	FNL	1314	FEL	40.28623	-104.79662	1.9	4767	SENE
16	MATTIE 1	1869	FNL	2013	FWL	40.28475	-104.80376	2.0	4759	SENW
17	WIEDEMAN 6	1543	FNL	1313	FWL	40.28565	-104.80628	1.9	4753	SWNW
18	WIEDEMAN 12-29	2031	FNL	652	FWL	40.28431	-104.80864	1.9	4758	SWNW
22	MEINING 1	2002	FNL	713	FEL	40.28441	-104.81353	2.2	4758	SENE
23	MEINING 1-30B	1972	FNL	717	FEL	40.28449	-104.81355	2.8	4758	SENE
24	MEINING 41-30	477	FNL	691	FEL	40.28860	-104.81347	3.0	4757	NENE
25	MEINING 5	1311	FNL	1190	FEL	40.28632	-104.81525	3.2	4755	NENE
26	MEINING 2	698	FNL	1986	FEL	40.28802	-104.81811	2.8	4754	NWNE
27	WIEDEMAN 1	655	FNL	683	FWL	40.28809	-104.80855	3.0	4755	NWNW
30	DERREK 1	665	FNL	1920	FWL	40.28806	-104.80411	1.9	4752	NENW
51	MCLEOD 29-14	2171	FNL	478	FEL	40.28389	-104.79362	1.9	4766	SENE
55	LAUREN 1	1832	FNL	2000	FEL	40.28491	-104.81814	1.6	4758	SWNE
59	WIEDEMAN 21-29	480	FNL	2180	FWL	40.28836	-104.80325	N/A	4749	NENW

NOTE: THE ABANDONED WELL DATA SHOWN IN RED ABOVE WAS OBTAINED FROM COGCC SCOUT CARDS.

SHEET 2 OF 2

DATE: 7/8/2014
PROJECT#: 2014114