

BILL BARRETT CORPORATION

ANSCHUTZ EQUUS FARMS 4-62-15_22 NENE PAD

#4-62-15-0758BH2, 0758CH2, 0857BH2 & 0857CH2

LOCATED IN WELD COUNTY, COLORADO

SECTION 15, T4N, R62W, 6th P.M.

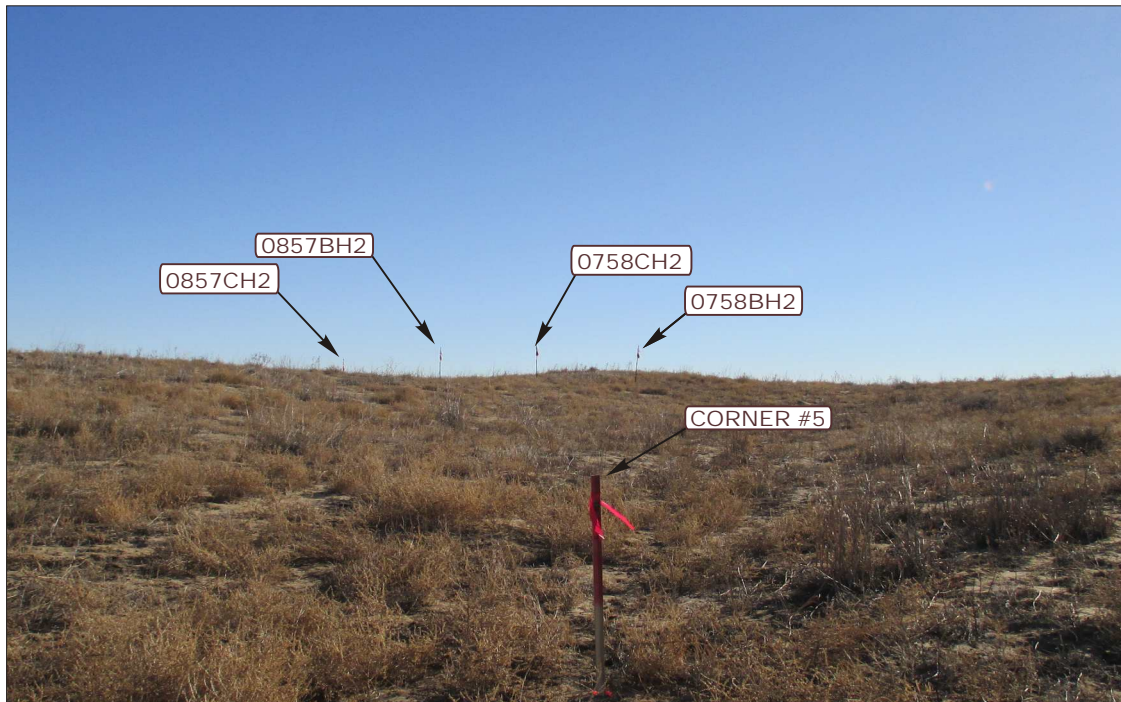


PHOTO: VIEW FROM CORNER #5 TO LOCATION STAKES

CAMERA ANGLE: SOUTHERLY



PHOTO: VIEW FROM BEGINNING OF PROPOSED ACCESS FOR
ANSCHUTZ EQUUS FARMS 4-62-16 NE PAD

CAMERA ANGLE: EASTERLY



- Since 1964 -

U
E
S

Uintah Engineering & Land Surveying

85 South 200 East Vernal, Utah 84078
(435) 789-1017 * FAX (435) 789-1813

LOCATION PHOTOS

01 27 14
MONTH DAY YEAR

PHOTO

P1

TAKEN BY: B.L.

DRAWN BY: L.S.

REVISED: 00-00-00

BILL BARRETT CORPORATION

ANSCHUTZ EQUUS FARMS 4-62-15_22 NENE PAD

#4-62-15-0758BH2, 0758CH2, 0857BH2 & 0857CH2

LOCATED IN WELD COUNTY, COLORADO

SECTION 15, T4N, R62W, 6th P.M.



PHOTO: VIEW OF LOCATION STAKES

CAMERA ANGLE: NORTHERLY



PHOTO: VIEW OF LOCATION STAKES

CAMERA ANGLE: EASTERLY



- Since 1964 -

UELS

Uintah Engineering & Land Surveying

85 South 200 East Vernal, Utah 84078
(435) 789-1017 * FAX (435) 789-1813

LOCATION PHOTOS

01
MONTH

27
DAY

14
YEAR

PHOTO

P2

TAKEN BY: B.L.

DRAWN BY: L.S.

REVISED: 00-00-00

BILL BARRETT CORPORATION

ANSCHUTZ EQUUS FARMS 4-62-15_22 NENE PAD

#4-62-15-0758BH2, 0758CH2, 0857BH2 & 0857CH2

LOCATED IN WELD COUNTY, COLORADO

SECTION 15, T4N, R62W, 6th P.M.

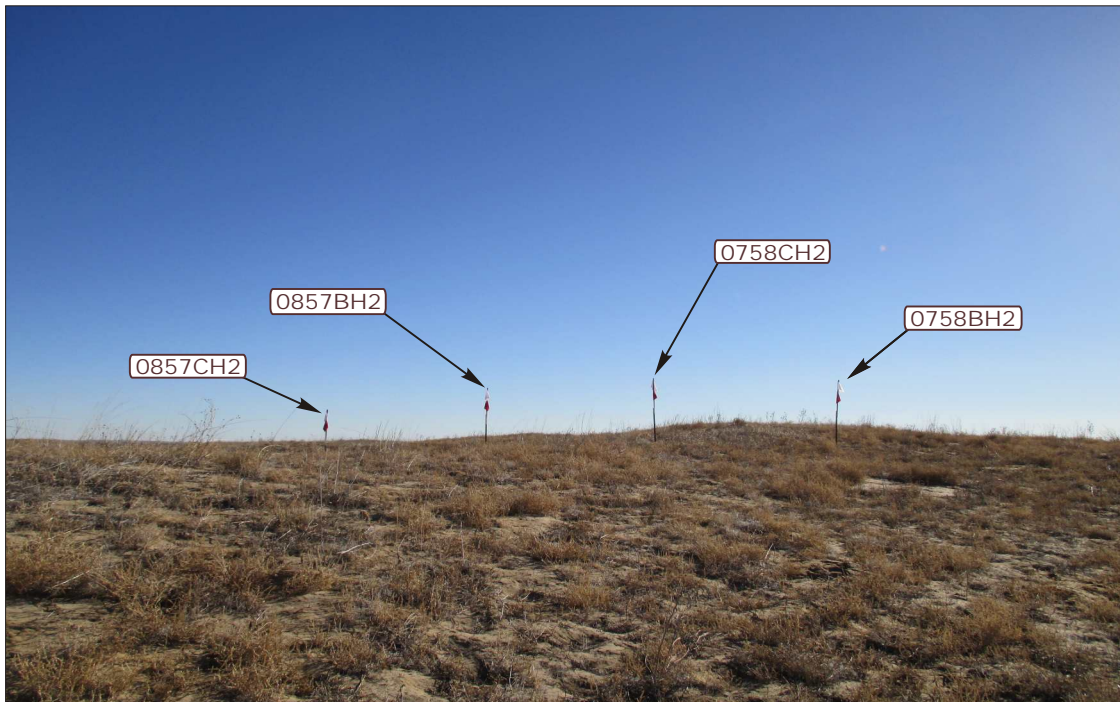


PHOTO: VIEW OF LOCATION STAKES

CAMERA ANGLE: SOUTHERLY



PHOTO: VIEW OF LOCATION STAKES

CAMERA ANGLE: WESTERLY



- Since 1964 -

UELS

Uintah Engineering & Land Surveying

85 South 200 East Vernal, Utah 84078
(435) 789-1017 * FAX (435) 789-1813

LOCATION PHOTOS

01 **27** **14**
MONTH DAY YEAR

TAKEN BY: B.L.

DRAWN BY: L.S.

REVISED: 00-00-00

PHOTO
P3