

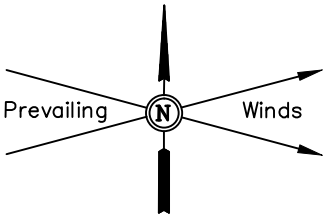
BILL BARRETT CORPORATION

LOCATION DRAWING FOR

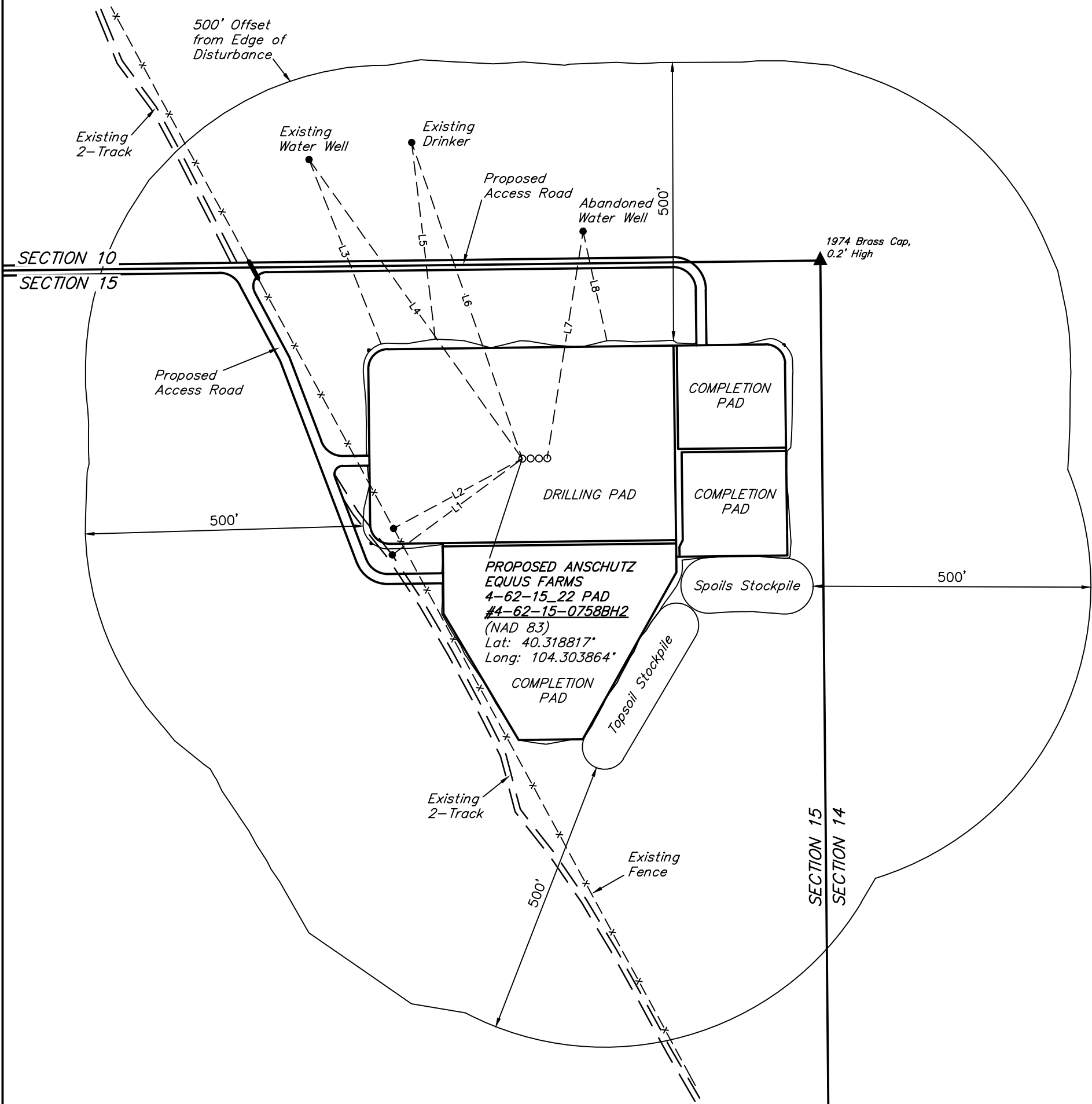
ANSCHUTZ EQUUS FARMS 4-62-15_22 NENE PAD
#4-62-15-0758BH2, 0758CH2,
0857BH2 & 0857CH2
SECTION 15, T4N, R62W, 6th P.M.
NE 1/4 NE 1/4

FIGURE #5

SCALE: 1" = 200'
DATE SURVEYED: 01-21-14
SURVEYED BY: BRETT LOWREY
DATE DRAWN: 02-12-14
DRAWN BY: J.W.



| LINE TABLE | | |
|------------|-----------|--------|
| LINE | DIRECTION | LENGTH |
| L1 | S54°W | 291' |
| L2 | S62°W | 263' |
| L3 | N21°W | 356' |
| L4 | N35°W | 661' |
| L5 | N07°W | 356' |
| L6 | N19°W | 603' |
| L7 | N09°E | 414' |
| L8 | N12°W | 202' |



PLANT COMMUNITY

☐ DISTURBED GRASSLAND

☐ NATIVE GRASSLAND

☐ SHRUB LAND

☐ PLAINS RIPARIAN

☐ MOUNTAIN RIPARIAN

☐ FOREST LAND

☐ WETLANDS AQUATIC

☐ ALPINE

☐ OTHER (Describe):

CURRENT LAND USE

CROP LAND:

NON-CROP LAND:

SUBDIVIDED:

☐ IRRIGATED

☐ RANGELAND

☐ INDUSTRIAL

☐ DRY LAND

☐ TIMBER

☐ COMMERCIAL

☐ IMPROVED PASTURE

☐ RECREATIONAL

☐ RESIDENTIAL

☐ HAY MEADOW

☐ OTHER (Describe)

FUTURE LAND USE

CROP LAND:

NON-CROP LAND:

SUBDIVIDED:

☐ IRRIGATED

☐ RANGELAND

☐ INDUSTRIAL

☐ DRY LAND

☐ TIMBER

☐ COMMERCIAL

☐ IMPROVED PASTURE

☐ RECREATIONAL

☐ RESIDENTIAL

☐ HAY MEADOW

☐ OTHER (Describe)