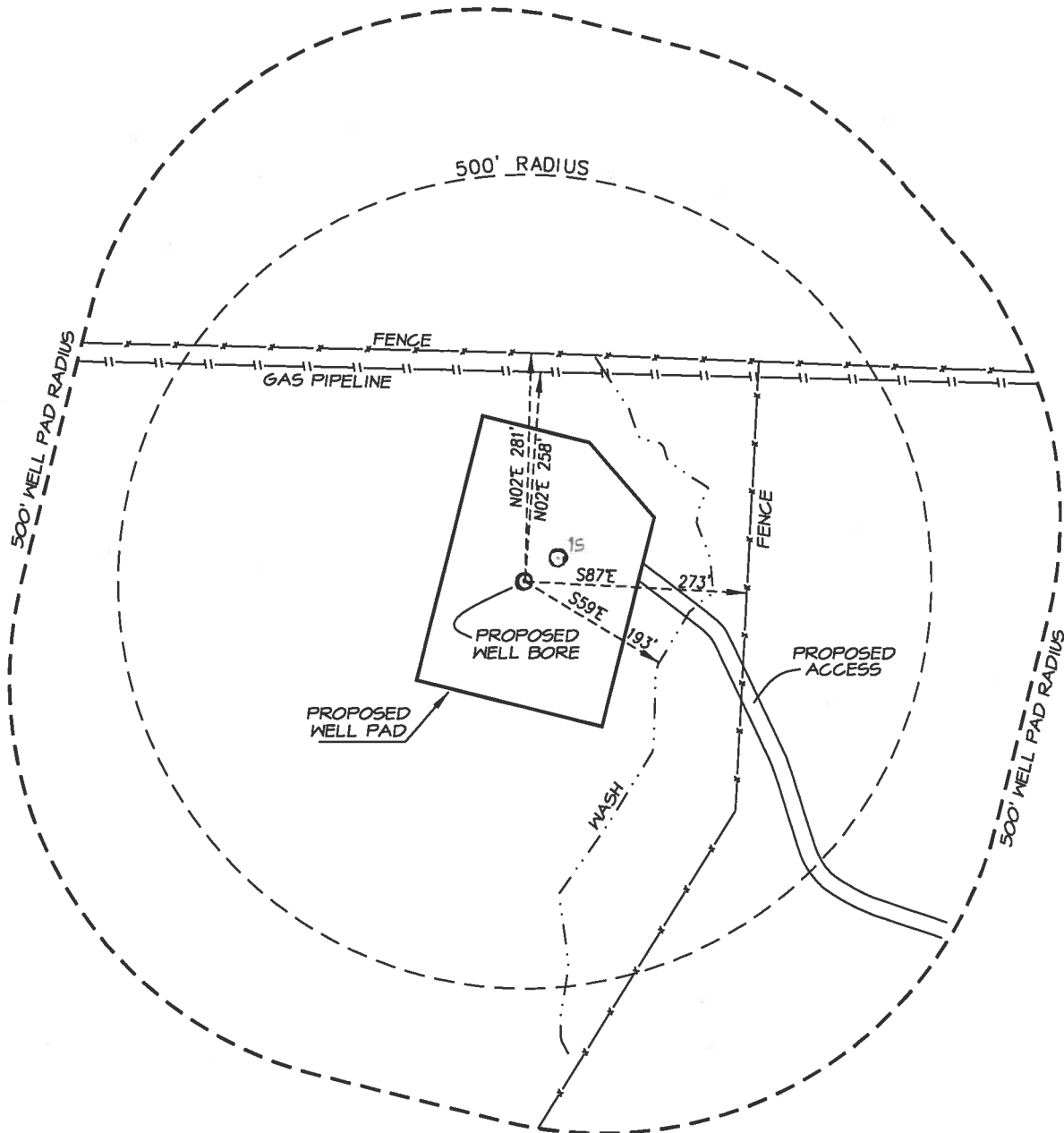


CATAMOUNT ENERGY PARTNERS: CARPENTER 32-6-3 #2
2359' FSL, 1805' FEL, SECTION 3, T-32-N, R-6-W, N.M.P.M.,
LA PLATA COUNTY, CO. GROUND LEVEL ELEVATION: 6372'

500' RADUIS VISIBLE IMPROVEMENT DETAIL

SURFACE USE = DRY GRASSLAND



DRAWING SCALE: 1" = 200'

DATE DRAWN: 9/18/14

NORTHSTAR SURVEYING & MAPPING, INC.

FILE NO. CEPO6CFC

DRAWN BY: K.R.

CHECKED BY: K.R.