



Bill Barrett Corporation

Bill Barrett Corp.

Weld Co., CO

Sec.15-T4N-R62W

Anschutz Eq Farms 4-62-15-0659CH2

Wellbore #1

Plan: Design #1

Standard Planning Report

11 April, 2014

Archer



Bill Barrett Corporation

Bill Barrett Corp.
Project: Weld Co., CO
Site: Sec.15-T4N-R62W
Well: Anschutz Eq Farms 4-62-15-0659CH2
Wellbore: Wellbore #1
Design: Design #1
Lat: 40° 19' 8.511 N
Long: 104° 18' 35.420 W
Pad GL: 4514.00
KB: WELL @ 4537.00usft (Original Well Elev)

Archer

SECTION DETAILS

MD	Inc	Azi	TVD	+N/-S	+E/-W	Dleg	TFace	VSect	Annotation
0.00	0.00	0.00	0.00	0.00	0.00	0.00	0.00	0.00	
900.00	0.00	0.00	900.00	0.00	0.00	0.00	0.00	0.00	Start Build 1.50
1509.09	9.14	70.50	1506.51	16.18	45.68	1.50	70.50	-14.89	Start 3086.68 hold at 1509.09 MD
4595.77	9.14	70.50	4554.03	179.78	507.68	0.00	0.00	-165.54	Start Drop -1.50
5204.86	0.00	0.00	5160.54	195.96	553.36	1.50	180.00	-180.43	Start 500.00 hold at 5204.86 MD
5704.86	0.00	0.00	5660.54	195.96	553.36	0.00	0.00	-180.43	Start Build 12.00
6457.30	90.29	178.40	6138.00	-283.76	566.73	12.00	178.40	299.48	Start 9758.50 hold at 6457.30 MD
16215.80	90.29	178.40	6088.00	-10038.35	838.54	0.00	0.00	10057.85	TD at 16215.80

WELL DETAILS: Anschutz Eq Farms 4-62-15-0659CH2

+N/-S	+E/-W	Northing	Ground Level: Easting	4514.00 Latitude	Longitude	Slot
0.00	0.00	1361290.952	3331858.092	40° 19' 8.511 N	104° 18' 35.420 W	

WELLBORE TARGET DETAILS (LAT/LONG)

Name	TVD	+N/-S	+E/-W	Latitude	Longitude	Shape Point
Anschutz Eq Farms4-62-15-0659CH2 tgt	6088.00	-10038.35	838.54	40° 17' 29.310 N	104° 18' 24.599 W	

CASING DETAILS

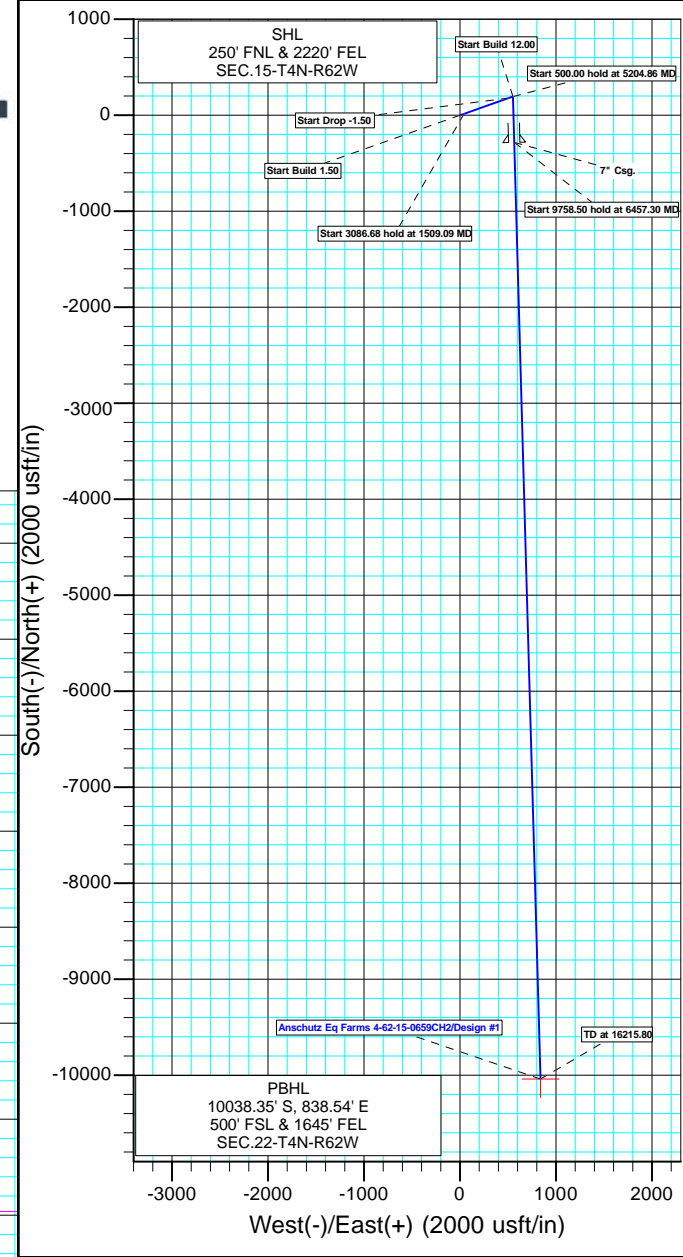
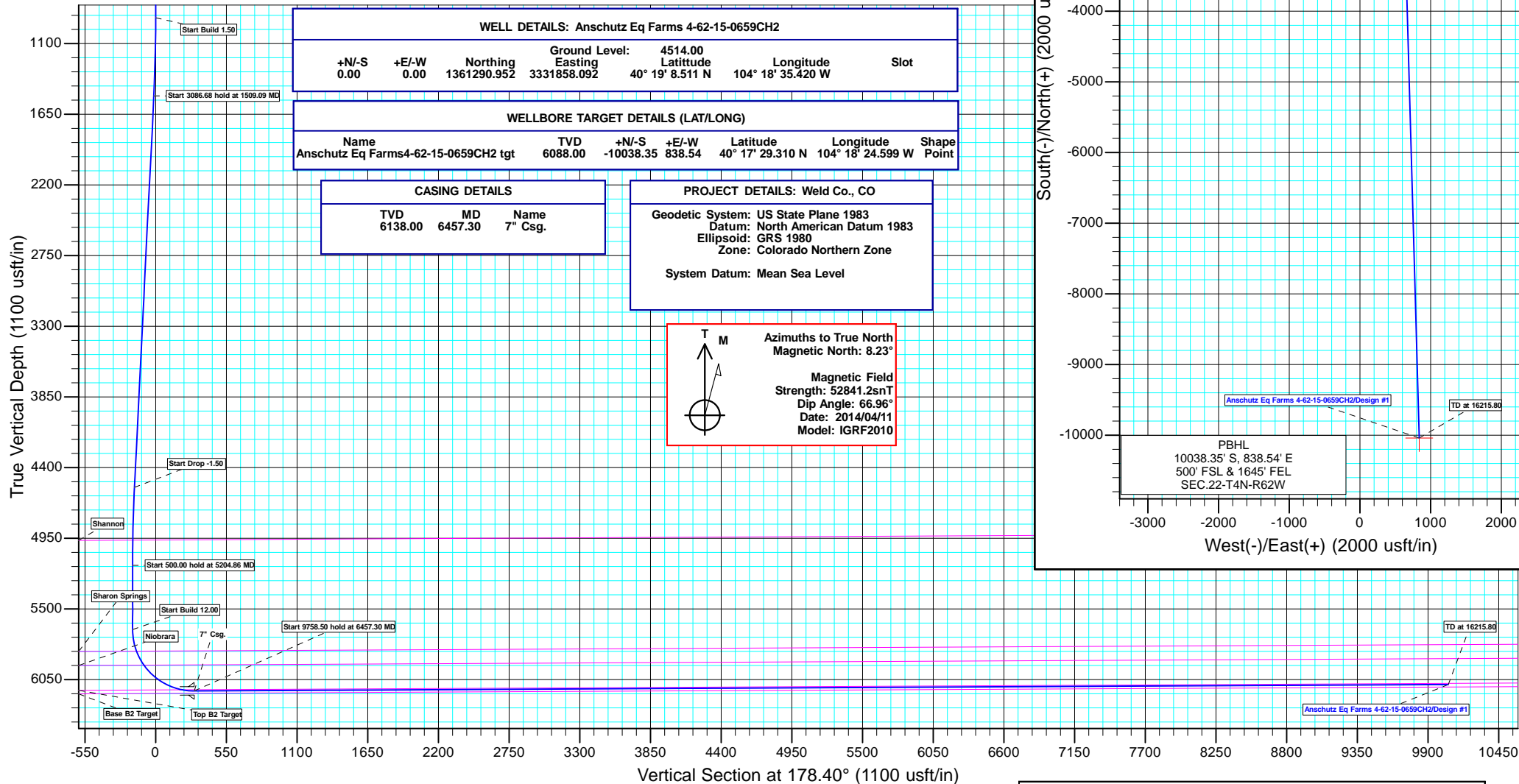
TVD	MD	Name
6138.00	6457.30	7" Csg.

PROJECT DETAILS: Weld Co., CO

Geodetic System: US State Plane 1983
Datum: North American Datum 1983
Ellipsoid: GRS 1980
Zone: Colorado Northern Zone
System Datum: Mean Sea Level



Azimuths to True North
Magnetic North: 8.23°
Magnetic Field
Strength: 52841.2snT
Dip Angle: 66.96°
Date: 2014/04/11
Model: IGRF2010



Plan: Design #1 (Anschutz Eq Farms 4-62-15-0659CH2/Wellbore #1)

Created By: Ricky Osburn

Date: 14:36, April 11 2014

Database:	EDMDBBW	Local Co-ordinate Reference:	Well Anschutz Eq Farms 4-62-15-0659CH2
Company:	Bill Barrett Corp.	TVD Reference:	WELL @ 4537.00usft (Original Well Elev)
Project:	Weld Co., CO	MD Reference:	WELL @ 4537.00usft (Original Well Elev)
Site:	Sec.15-T4N-R62W	North Reference:	True
Well:	Anschutz Eq Farms 4-62-15-0659CH2	Survey Calculation Method:	Minimum Curvature
Wellbore:	Wellbore #1		
Design:	Design #1		

Project	Weld Co., CO		
Map System:	US State Plane 1983	System Datum:	Mean Sea Level
Geo Datum:	North American Datum 1983		
Map Zone:	Colorado Northern Zone		

Site		Sec.15-T4N-R62W			
Site Position:		Northing:	1,361,232.866 usft	Latitude:	40° 19' 8.231 N
From:	Lat/Long	Easting:	3,329,639.637 usft	Longitude:	104° 19' 4.069 W
Position Uncertainty:	0.00 usft	Slot Radius:	13-3/16"	Grid Convergence:	0.76 °

Well	Anschutz Eq Farms 4-62-15-0659CH2					
Well Position	+N/-S	28.51 usft	Northing:	1,361,290.952 usft	Latitude:	40° 19' 8.511 N
	+E/-W	2,219.03 usft	Easting:	3,331,858.092 usft	Longitude:	104° 18' 35.420 W
Position Uncertainty		0.00 usft	Wellhead Elevation:	usft	Ground Level:	4,514.00 usft

Wellbore	Wellbore #1				
Magnetics	Model Name	Sample Date	Declination (°)	Dip Angle (°)	Field Strength (nT)
	IGRF2010	2014/04/11	8.23	66.96	52,841

Design	Design #1			
Audit Notes:				
Version:	Phase:	PLAN	Tie On Depth:	0.00
Vertical Section:	Depth From (TVD) (usft)	+N/-S (usft)	+E/-W (usft)	Direction (°)
	0.00	0.00	0.00	178.40

Plan Sections										
Measured Depth (usft)	Inclination (°)	Azimuth (°)	Vertical Depth (usft)	+N/-S (usft)	+E/-W (usft)	Dogleg Rate (°/100usft)	Build Rate (°/100usft)	Turn Rate (°/100usft)	TFO (°)	Target
0.00	0.00	0.00	0.00	0.00	0.00	0.00	0.00	0.00	0.00	
900.00	0.00	0.00	900.00	0.00	0.00	0.00	0.00	0.00	0.00	
1,509.09	9.14	70.50	1,506.51	16.18	45.68	1.50	1.50	0.00	70.50	
4,595.77	9.14	70.50	4,554.03	179.78	507.68	0.00	0.00	0.00	0.00	
5,204.86	0.00	0.00	5,160.54	195.96	553.36	1.50	-1.50	0.00	180.00	
5,704.86	0.00	0.00	5,660.54	195.96	553.36	0.00	0.00	0.00	0.00	
6,457.30	90.29	178.40	6,138.00	-283.76	566.73	12.00	12.00	0.00	178.40	Anschutz Eq Farms4-
16,215.80	90.29	178.40	6,088.00	-10,038.35	838.54	0.00	0.00	0.00	0.00	Anschutz Eq Farms4-

Database:	EDMDBBW	Local Co-ordinate Reference:	Well Anschutz Eq Farms 4-62-15-0659CH2
Company:	Bill Barrett Corp.	TVD Reference:	WELL @ 4537.00usft (Original Well Elev)
Project:	Weld Co., CO	MD Reference:	WELL @ 4537.00usft (Original Well Elev)
Site:	Sec.15-T4N-R62W	North Reference:	True
Well:	Anschutz Eq Farms 4-62-15-0659CH2	Survey Calculation Method:	Minimum Curvature
Wellbore:	Wellbore #1		
Design:	Design #1		

Planned Survey									
Measured Depth (usft)	Inclination (°)	Azimuth (°)	Vertical Depth (usft)	+N/-S (usft)	+E/-W (usft)	Vertical Section (usft)	Dogleg Rate (°/100usft)	Build Rate (°/100usft)	Turn Rate (°/100usft)
0.00	0.00	0.00	0.00	0.00	0.00	0.00	0.00	0.00	0.00
100.00	0.00	0.00	100.00	0.00	0.00	0.00	0.00	0.00	0.00
200.00	0.00	0.00	200.00	0.00	0.00	0.00	0.00	0.00	0.00
300.00	0.00	0.00	300.00	0.00	0.00	0.00	0.00	0.00	0.00
400.00	0.00	0.00	400.00	0.00	0.00	0.00	0.00	0.00	0.00
500.00	0.00	0.00	500.00	0.00	0.00	0.00	0.00	0.00	0.00
600.00	0.00	0.00	600.00	0.00	0.00	0.00	0.00	0.00	0.00
700.00	0.00	0.00	700.00	0.00	0.00	0.00	0.00	0.00	0.00
800.00	0.00	0.00	800.00	0.00	0.00	0.00	0.00	0.00	0.00
Start Build 1.50									
900.00	0.00	0.00	900.00	0.00	0.00	0.00	0.00	0.00	0.00
1,000.00	1.50	70.50	999.99	0.44	1.23	-0.40	1.50	1.50	0.00
1,100.00	3.00	70.50	1,099.91	1.75	4.93	-1.61	1.50	1.50	0.00
1,200.00	4.50	70.50	1,199.69	3.93	11.10	-3.62	1.50	1.50	0.00
1,300.00	6.00	70.50	1,299.27	6.99	19.72	-6.43	1.50	1.50	0.00
1,400.00	7.50	70.50	1,398.57	10.91	30.80	-10.04	1.50	1.50	0.00
Start 3086.68 hold at 1509.09 MD									
1,509.09	9.14	70.50	1,506.51	16.18	45.68	-14.89	1.50	1.50	0.00
1,600.00	9.14	70.50	1,596.27	21.00	59.29	-19.33	0.00	0.00	0.00
1,700.00	9.14	70.50	1,695.00	26.30	74.25	-24.21	0.00	0.00	0.00
1,800.00	9.14	70.50	1,793.73	31.60	89.22	-29.09	0.00	0.00	0.00
1,900.00	9.14	70.50	1,892.46	36.90	104.19	-33.97	0.00	0.00	0.00
2,000.00	9.14	70.50	1,991.19	42.20	119.16	-38.85	0.00	0.00	0.00
2,100.00	9.14	70.50	2,089.93	47.50	134.12	-43.73	0.00	0.00	0.00
2,200.00	9.14	70.50	2,188.66	52.80	149.09	-48.61	0.00	0.00	0.00
2,300.00	9.14	70.50	2,287.39	58.10	164.06	-53.49	0.00	0.00	0.00
2,400.00	9.14	70.50	2,386.12	63.40	179.03	-58.38	0.00	0.00	0.00
2,500.00	9.14	70.50	2,484.85	68.70	194.00	-63.26	0.00	0.00	0.00
2,600.00	9.14	70.50	2,583.58	74.00	208.96	-68.14	0.00	0.00	0.00
2,700.00	9.14	70.50	2,682.31	79.30	223.93	-73.02	0.00	0.00	0.00
2,800.00	9.14	70.50	2,781.04	84.60	238.90	-77.90	0.00	0.00	0.00
2,900.00	9.14	70.50	2,879.78	89.90	253.87	-82.78	0.00	0.00	0.00
3,000.00	9.14	70.50	2,978.51	95.20	268.83	-87.66	0.00	0.00	0.00
3,100.00	9.14	70.50	3,077.24	100.50	283.80	-92.54	0.00	0.00	0.00
3,200.00	9.14	70.50	3,175.97	105.80	298.77	-97.42	0.00	0.00	0.00
3,300.00	9.14	70.50	3,274.70	111.10	313.74	-102.30	0.00	0.00	0.00
3,400.00	9.14	70.50	3,373.43	116.40	328.70	-107.18	0.00	0.00	0.00
3,500.00	9.14	70.50	3,472.16	121.70	343.67	-112.06	0.00	0.00	0.00
3,600.00	9.14	70.50	3,570.90	127.00	358.64	-116.94	0.00	0.00	0.00
3,700.00	9.14	70.50	3,669.63	132.30	373.61	-121.82	0.00	0.00	0.00
3,800.00	9.14	70.50	3,768.36	137.60	388.57	-126.70	0.00	0.00	0.00
3,900.00	9.14	70.50	3,867.09	142.90	403.54	-131.58	0.00	0.00	0.00
4,000.00	9.14	70.50	3,965.82	148.21	418.51	-136.46	0.00	0.00	0.00
4,100.00	9.14	70.50	4,064.55	153.51	433.48	-141.34	0.00	0.00	0.00
4,200.00	9.14	70.50	4,163.28	158.81	448.44	-146.22	0.00	0.00	0.00
4,300.00	9.14	70.50	4,262.01	164.11	463.41	-151.10	0.00	0.00	0.00
4,400.00	9.14	70.50	4,360.75	169.41	478.38	-155.98	0.00	0.00	0.00
4,500.00	9.14	70.50	4,459.48	174.71	493.35	-160.86	0.00	0.00	0.00
Start Drop -1.50									
4,595.77	9.14	70.50	4,554.03	179.78	507.68	-165.54	0.00	0.00	0.00
4,600.00	9.07	70.50	4,558.21	180.01	508.31	-165.74	1.50	-1.50	0.00
4,700.00	7.57	70.50	4,657.15	184.84	521.96	-170.19	1.50	-1.50	0.00
4,800.00	6.07	70.50	4,756.44	188.80	533.15	-173.84	1.50	-1.50	0.00

Database:	EDMDBBW	Local Co-ordinate Reference:	Well Anschutz Eq Farms 4-62-15-0659CH2
Company:	Bill Barrett Corp.	TVD Reference:	WELL @ 4537.00usft (Original Well Elev)
Project:	Weld Co., CO	MD Reference:	WELL @ 4537.00usft (Original Well Elev)
Site:	Sec.15-T4N-R62W	North Reference:	True
Well:	Anschutz Eq Farms 4-62-15-0659CH2	Survey Calculation Method:	Minimum Curvature
Wellbore:	Wellbore #1		
Design:	Design #1		

Planned Survey									
Measured Depth (usft)	Inclination (°)	Azimuth (°)	Vertical Depth (usft)	+N/-S (usft)	+E/-W (usft)	Vertical Section (usft)	Dogleg Rate (°/100usft)	Build Rate (°/100usft)	Turn Rate (°/100usft)
4,900.00	4.57	70.50	4,856.01	191.90	541.90	-176.70	1.50	-1.50	0.00
5,000.00	3.07	70.50	4,955.78	194.13	548.18	-178.74	1.50	-1.50	0.00
Shannon									
5,008.13	2.95	70.50	4,963.91	194.27	548.59	-178.88	1.50	-1.50	0.00
5,100.00	1.57	70.50	5,055.70	195.48	552.00	-179.99	1.50	-1.50	0.00
Start 500.00 hold at 5204.86 MD									
5,204.86	0.00	0.00	5,160.54	195.96	553.36	-180.43	1.50	-1.50	0.00
5,300.00	0.00	0.00	5,255.68	195.96	553.36	-180.43	0.00	0.00	0.00
5,400.00	0.00	0.00	5,355.68	195.96	553.36	-180.43	0.00	0.00	0.00
5,500.00	0.00	0.00	5,455.68	195.96	553.36	-180.43	0.00	0.00	0.00
5,600.00	0.00	0.00	5,555.68	195.96	553.36	-180.43	0.00	0.00	0.00
Start Build 12.00									
5,704.86	0.00	0.00	5,660.54	195.96	553.36	-180.43	0.00	0.00	0.00
5,725.00	2.42	178.40	5,680.68	195.54	553.37	-180.01	12.00	12.00	0.00
5,750.00	5.42	178.40	5,705.62	193.83	553.42	-178.30	12.00	12.00	0.00
5,775.00	8.42	178.40	5,730.43	190.82	553.50	-175.29	12.00	12.00	0.00
5,800.00	11.42	178.40	5,755.06	186.52	553.62	-170.98	12.00	12.00	0.00
5,825.00	14.42	178.40	5,779.42	180.93	553.78	-165.40	12.00	12.00	0.00
5,850.00	17.42	178.40	5,803.46	174.08	553.97	-158.54	12.00	12.00	0.00
5,875.00	20.42	178.40	5,827.11	165.98	554.20	-150.44	12.00	12.00	0.00
Sharon Springs									
5,876.76	20.63	178.40	5,828.76	165.36	554.21	-149.82	12.00	12.00	0.00
5,900.00	23.42	178.40	5,850.30	156.65	554.46	-141.11	12.00	12.00	0.00
5,925.00	26.42	178.40	5,872.97	146.12	554.75	-130.57	12.00	12.00	0.00
5,950.00	29.42	178.40	5,895.06	134.42	555.07	-118.87	12.00	12.00	0.00
5,975.00	32.42	178.40	5,916.50	121.58	555.43	-106.03	12.00	12.00	0.00
6,000.00	35.42	178.40	5,937.24	107.64	555.82	-92.08	12.00	12.00	0.00
Niobrara									
6,000.27	35.45	178.40	5,937.47	107.48	555.83	-91.92	12.00	12.00	0.00
6,025.00	38.42	178.40	5,957.23	92.63	556.24	-77.06	12.00	12.00	0.00
6,050.00	41.42	178.40	5,976.40	76.60	556.69	-61.02	12.00	12.00	0.00
6,075.00	44.42	178.40	5,994.71	59.58	557.16	-44.00	12.00	12.00	0.00
6,100.00	47.42	178.40	6,012.10	41.63	557.66	-26.05	12.00	12.00	0.00
6,125.00	50.42	178.40	6,028.53	22.80	558.19	-7.20	12.00	12.00	0.00
6,150.00	53.42	178.40	6,043.94	3.13	558.73	12.47	12.00	12.00	0.00
6,175.00	56.42	178.40	6,058.31	-17.32	559.30	32.93	12.00	12.00	0.00
6,200.00	59.42	178.40	6,071.59	-38.49	559.89	54.11	12.00	12.00	0.00
6,225.00	62.42	178.40	6,083.74	-60.33	560.50	75.95	12.00	12.00	0.00
6,250.00	65.42	178.40	6,094.73	-82.77	561.13	98.40	12.00	12.00	0.00
6,275.00	68.42	178.40	6,104.53	-105.76	561.77	121.40	12.00	12.00	0.00
6,300.00	71.42	178.40	6,113.11	-129.22	562.42	144.88	12.00	12.00	0.00
6,325.00	74.42	178.40	6,120.46	-153.11	563.09	168.77	12.00	12.00	0.00
6,350.00	77.42	178.40	6,126.54	-177.35	563.76	193.02	12.00	12.00	0.00
Top B2 Target									
6,361.80	78.83	178.40	6,128.97	-188.89	564.08	204.56	12.00	12.00	0.00
6,375.00	80.42	178.40	6,131.34	-201.87	564.45	217.55	12.00	12.00	0.00
6,400.00	83.42	178.40	6,134.86	-226.61	565.13	242.30	12.00	12.00	0.00
6,425.00	86.42	178.40	6,137.07	-251.50	565.83	267.20	12.00	12.00	0.00
6,450.00	89.42	178.40	6,137.98	-276.47	566.52	292.18	12.00	12.00	0.00
Start 9758.50 hold at 6457.30 MD - 7" Csg.									
6,457.30	90.29	178.40	6,138.00	-283.76	566.73	299.48	12.00	12.00	0.00
6,500.00	90.29	178.40	6,137.78	-326.45	567.92	342.18	0.00	0.00	0.00
6,600.00	90.29	178.40	6,137.27	-426.41	570.70	442.17	0.00	0.00	0.00

Database:	EDMDBBW	Local Co-ordinate Reference:	Well Anschutz Eq Farms 4-62-15-0659CH2
Company:	Bill Barrett Corp.	TVD Reference:	WELL @ 4537.00usft (Original Well Elev)
Project:	Weld Co., CO	MD Reference:	WELL @ 4537.00usft (Original Well Elev)
Site:	Sec.15-T4N-R62W	North Reference:	True
Well:	Anschutz Eq Farms 4-62-15-0659CH2	Survey Calculation Method:	Minimum Curvature
Wellbore:	Wellbore #1		
Design:	Design #1		

Planned Survey									
Measured Depth (usft)	Inclination (°)	Azimuth (°)	Vertical Depth (usft)	+N/-S (usft)	+E/-W (usft)	Vertical Section (usft)	Dogleg Rate (°/100usft)	Build Rate (°/100usft)	Turn Rate (°/100usft)
6,700.00	90.29	178.40	6,136.76	-526.37	573.49	542.17	0.00	0.00	0.00
6,800.00	90.29	178.40	6,136.24	-626.33	576.27	642.17	0.00	0.00	0.00
6,900.00	90.29	178.40	6,135.73	-726.29	579.06	742.17	0.00	0.00	0.00
7,000.00	90.29	178.40	6,135.22	-826.25	581.84	842.17	0.00	0.00	0.00
7,100.00	90.29	178.40	6,134.71	-926.21	584.63	942.17	0.00	0.00	0.00
7,200.00	90.29	178.40	6,134.19	-1,026.17	587.41	1,042.17	0.00	0.00	0.00
7,300.00	90.29	178.40	6,133.68	-1,126.13	590.20	1,142.17	0.00	0.00	0.00
7,400.00	90.29	178.40	6,133.17	-1,226.09	592.99	1,242.16	0.00	0.00	0.00
7,500.00	90.29	178.40	6,132.66	-1,326.04	595.77	1,342.16	0.00	0.00	0.00
7,600.00	90.29	178.40	6,132.14	-1,426.00	598.56	1,442.16	0.00	0.00	0.00
7,700.00	90.29	178.40	6,131.63	-1,525.96	601.34	1,542.16	0.00	0.00	0.00
7,800.00	90.29	178.40	6,131.12	-1,625.92	604.13	1,642.16	0.00	0.00	0.00
7,900.00	90.29	178.40	6,130.61	-1,725.88	606.91	1,742.16	0.00	0.00	0.00
8,000.00	90.29	178.40	6,130.09	-1,825.84	609.70	1,842.16	0.00	0.00	0.00
8,100.00	90.29	178.40	6,129.58	-1,925.80	612.48	1,942.16	0.00	0.00	0.00
8,200.00	90.29	178.40	6,129.07	-2,025.76	615.27	2,042.15	0.00	0.00	0.00
8,300.00	90.29	178.40	6,128.56	-2,125.72	618.05	2,142.15	0.00	0.00	0.00
8,400.00	90.29	178.40	6,128.05	-2,225.68	620.84	2,242.15	0.00	0.00	0.00
8,500.00	90.29	178.40	6,127.53	-2,325.64	623.63	2,342.15	0.00	0.00	0.00
8,600.00	90.29	178.40	6,127.02	-2,425.60	626.41	2,442.15	0.00	0.00	0.00
8,700.00	90.29	178.40	6,126.51	-2,525.56	629.20	2,542.15	0.00	0.00	0.00
8,800.00	90.29	178.40	6,126.00	-2,625.52	631.98	2,642.15	0.00	0.00	0.00
8,900.00	90.29	178.40	6,125.48	-2,725.48	634.77	2,742.14	0.00	0.00	0.00
9,000.00	90.29	178.40	6,124.97	-2,825.44	637.55	2,842.14	0.00	0.00	0.00
9,100.00	90.29	178.40	6,124.46	-2,925.40	640.34	2,942.14	0.00	0.00	0.00
9,200.00	90.29	178.40	6,123.95	-3,025.36	643.12	3,042.14	0.00	0.00	0.00
9,300.00	90.29	178.40	6,123.43	-3,125.32	645.91	3,142.14	0.00	0.00	0.00
9,400.00	90.29	178.40	6,122.92	-3,225.28	648.69	3,242.14	0.00	0.00	0.00
9,500.00	90.29	178.40	6,122.41	-3,325.24	651.48	3,342.14	0.00	0.00	0.00
9,600.00	90.29	178.40	6,121.90	-3,425.20	654.26	3,442.14	0.00	0.00	0.00
9,700.00	90.29	178.40	6,121.39	-3,525.16	657.05	3,542.13	0.00	0.00	0.00
9,800.00	90.29	178.40	6,120.87	-3,625.12	659.84	3,642.13	0.00	0.00	0.00
9,900.00	90.29	178.40	6,120.36	-3,725.08	662.62	3,742.13	0.00	0.00	0.00
10,000.00	90.29	178.40	6,119.85	-3,825.04	665.41	3,842.13	0.00	0.00	0.00
10,100.00	90.29	178.40	6,119.34	-3,925.00	668.19	3,942.13	0.00	0.00	0.00
10,200.00	90.29	178.40	6,118.82	-4,024.96	670.98	4,042.13	0.00	0.00	0.00
10,300.00	90.29	178.40	6,118.31	-4,124.92	673.76	4,142.13	0.00	0.00	0.00
10,400.00	90.29	178.40	6,117.80	-4,224.88	676.55	4,242.12	0.00	0.00	0.00
10,500.00	90.29	178.40	6,117.29	-4,324.84	679.33	4,342.12	0.00	0.00	0.00
10,600.00	90.29	178.40	6,116.77	-4,424.80	682.12	4,442.12	0.00	0.00	0.00
10,700.00	90.29	178.40	6,116.26	-4,524.76	684.90	4,542.12	0.00	0.00	0.00
10,800.00	90.29	178.40	6,115.75	-4,624.72	687.69	4,642.12	0.00	0.00	0.00
10,900.00	90.29	178.40	6,115.24	-4,724.68	690.48	4,742.12	0.00	0.00	0.00
11,000.00	90.29	178.40	6,114.73	-4,824.64	693.26	4,842.12	0.00	0.00	0.00
11,100.00	90.29	178.40	6,114.21	-4,924.60	696.05	4,942.12	0.00	0.00	0.00
11,200.00	90.29	178.40	6,113.70	-5,024.56	698.83	5,042.11	0.00	0.00	0.00
11,300.00	90.29	178.40	6,113.19	-5,124.52	701.62	5,142.11	0.00	0.00	0.00
11,400.00	90.29	178.40	6,112.68	-5,224.48	704.40	5,242.11	0.00	0.00	0.00
11,500.00	90.29	178.40	6,112.16	-5,324.44	707.19	5,342.11	0.00	0.00	0.00
11,600.00	90.29	178.40	6,111.65	-5,424.40	709.97	5,442.11	0.00	0.00	0.00
11,700.00	90.29	178.40	6,111.14	-5,524.36	712.76	5,542.11	0.00	0.00	0.00
11,800.00	90.29	178.40	6,110.63	-5,624.32	715.54	5,642.11	0.00	0.00	0.00
11,900.00	90.29	178.40	6,110.11	-5,724.28	718.33	5,742.11	0.00	0.00	0.00
12,000.00	90.29	178.40	6,109.60	-5,824.24	721.11	5,842.10	0.00	0.00	0.00

Database:	EDMDBBW	Local Co-ordinate Reference:	Well Anschutz Eq Farms 4-62-15-0659CH2
Company:	Bill Barrett Corp.	TVD Reference:	WELL @ 4537.00usft (Original Well Elev)
Project:	Weld Co., CO	MD Reference:	WELL @ 4537.00usft (Original Well Elev)
Site:	Sec.15-T4N-R62W	North Reference:	True
Well:	Anschutz Eq Farms 4-62-15-0659CH2	Survey Calculation Method:	Minimum Curvature
Wellbore:	Wellbore #1		
Design:	Design #1		

Planned Survey									
Measured Depth (usft)	Inclination (°)	Azimuth (°)	Vertical Depth (usft)	+N/-S (usft)	+E/-W (usft)	Vertical Section (usft)	Dogleg Rate (°/100usft)	Build Rate (°/100usft)	Turn Rate (°/100usft)
12,100.00	90.29	178.40	6,109.09	-5,924.20	723.90	5,942.10	0.00	0.00	0.00
12,200.00	90.29	178.40	6,108.58	-6,024.16	726.69	6,042.10	0.00	0.00	0.00
12,300.00	90.29	178.40	6,108.07	-6,124.12	729.47	6,142.10	0.00	0.00	0.00
12,400.00	90.29	178.40	6,107.55	-6,224.08	732.26	6,242.10	0.00	0.00	0.00
12,500.00	90.29	178.40	6,107.04	-6,324.04	735.04	6,342.10	0.00	0.00	0.00
12,600.00	90.29	178.40	6,106.53	-6,424.00	737.83	6,442.10	0.00	0.00	0.00
12,700.00	90.29	178.40	6,106.02	-6,523.96	740.61	6,542.09	0.00	0.00	0.00
12,800.00	90.29	178.40	6,105.50	-6,623.92	743.40	6,642.09	0.00	0.00	0.00
12,900.00	90.29	178.40	6,104.99	-6,723.88	746.18	6,742.09	0.00	0.00	0.00
13,000.00	90.29	178.40	6,104.48	-6,823.84	748.97	6,842.09	0.00	0.00	0.00
13,100.00	90.29	178.40	6,103.97	-6,923.80	751.75	6,942.09	0.00	0.00	0.00
13,200.00	90.29	178.40	6,103.45	-7,023.76	754.54	7,042.09	0.00	0.00	0.00
13,300.00	90.29	178.40	6,102.94	-7,123.72	757.33	7,142.09	0.00	0.00	0.00
13,400.00	90.29	178.40	6,102.43	-7,223.68	760.11	7,242.09	0.00	0.00	0.00
13,500.00	90.29	178.40	6,101.92	-7,323.64	762.90	7,342.08	0.00	0.00	0.00
13,600.00	90.29	178.40	6,101.40	-7,423.60	765.68	7,442.08	0.00	0.00	0.00
13,700.00	90.29	178.40	6,100.89	-7,523.56	768.47	7,542.08	0.00	0.00	0.00
13,800.00	90.29	178.40	6,100.38	-7,623.52	771.25	7,642.08	0.00	0.00	0.00
13,900.00	90.29	178.40	6,099.87	-7,723.48	774.04	7,742.08	0.00	0.00	0.00
14,000.00	90.29	178.40	6,099.36	-7,823.44	776.82	7,842.08	0.00	0.00	0.00
14,100.00	90.29	178.40	6,098.84	-7,923.40	779.61	7,942.08	0.00	0.00	0.00
14,200.00	90.29	178.40	6,098.33	-8,023.36	782.39	8,042.07	0.00	0.00	0.00
14,300.00	90.29	178.40	6,097.82	-8,123.32	785.18	8,142.07	0.00	0.00	0.00
14,400.00	90.29	178.40	6,097.31	-8,223.28	787.96	8,242.07	0.00	0.00	0.00
14,500.00	90.29	178.40	6,096.79	-8,323.24	790.75	8,342.07	0.00	0.00	0.00
14,600.00	90.29	178.40	6,096.28	-8,423.20	793.54	8,442.07	0.00	0.00	0.00
14,700.00	90.29	178.40	6,095.77	-8,523.16	796.32	8,542.07	0.00	0.00	0.00
14,800.00	90.29	178.40	6,095.26	-8,623.12	799.11	8,642.07	0.00	0.00	0.00
14,900.00	90.29	178.40	6,094.74	-8,723.08	801.89	8,742.07	0.00	0.00	0.00
15,000.00	90.29	178.40	6,094.23	-8,823.04	804.68	8,842.06	0.00	0.00	0.00
15,100.00	90.29	178.40	6,093.72	-8,923.00	807.46	8,942.06	0.00	0.00	0.00
15,200.00	90.29	178.40	6,093.21	-9,022.96	810.25	9,042.06	0.00	0.00	0.00
15,300.00	90.29	178.40	6,092.70	-9,122.92	813.03	9,142.06	0.00	0.00	0.00
15,400.00	90.29	178.40	6,092.18	-9,222.88	815.82	9,242.06	0.00	0.00	0.00
15,500.00	90.29	178.40	6,091.67	-9,322.84	818.60	9,342.06	0.00	0.00	0.00
15,600.00	90.29	178.40	6,091.16	-9,422.80	821.39	9,442.06	0.00	0.00	0.00
15,700.00	90.29	178.40	6,090.65	-9,522.76	824.18	9,542.06	0.00	0.00	0.00
15,800.00	90.29	178.40	6,090.13	-9,622.72	826.96	9,642.05	0.00	0.00	0.00
15,900.00	90.29	178.40	6,089.62	-9,722.68	829.75	9,742.05	0.00	0.00	0.00
16,000.00	90.29	178.40	6,089.11	-9,822.64	832.53	9,842.05	0.00	0.00	0.00
16,100.00	90.29	178.40	6,088.60	-9,922.60	835.32	9,942.05	0.00	0.00	0.00
16,200.00	90.29	178.40	6,088.08	-10,022.56	838.10	10,042.05	0.00	0.00	0.00
TD at 16215.80									
16,215.80	90.29	178.40	6,088.00	-10,038.35	838.54	10,057.85	0.00	0.00	0.00

Database:	EDMDBBW	Local Co-ordinate Reference:	Well Anschutz Eq Farms 4-62-15-0659CH2
Company:	Bill Barrett Corp.	TVD Reference:	WELL @ 4537.00usft (Original Well Elev)
Project:	Weld Co., CO	MD Reference:	WELL @ 4537.00usft (Original Well Elev)
Site:	Sec.15-T4N-R62W	North Reference:	True
Well:	Anschutz Eq Farms 4-62-15-0659CH2	Survey Calculation Method:	Minimum Curvature
Wellbore:	Wellbore #1		
Design:	Design #1		

Design Targets									
Target Name	Dip Angle	Dip Dir.	TVD	+N/-S	+E/-W	Northing	Easting	Latitude	Longitude
- hit/miss target	(°)	(°)	(usft)	(usft)	(usft)	(usft)	(usft)		
- Shape									
Anschutz Eq Farms4-62	0.00	0.00	6,088.00	-10,038.35	838.54	1,351,264.762	3,332,831.286	40° 17' 29.310 N	104° 18' 24.599 W
- plan hits target center									
- Point									

Casing Points					
Measured Depth	Vertical Depth	Name		Casing Diameter	Hole Diameter
(usft)	(usft)			(")	(")
6,457.30	6,138.00	7" Csg.		7	8-3/4

Formations						
Measured Depth	Vertical Depth	Name		Lithology	Dip	Dip Direction
(usft)	(usft)				(°)	(°)
5,008.13	4,963.00	Shannon			-0.29	178.41
5,876.76	5,828.00	Sharon Springs			-0.29	178.41
6,000.27	5,937.00	Niobrara			-0.29	178.41
6,361.80	6,130.00	Top B2 Target			-0.29	178.41

Plan Annotations					
Measured Depth	Vertical Depth	Local Coordinates		Comment	
(usft)	(usft)	+N/-S	+E/-W		
(usft)	(usft)	(usft)	(usft)		
900.00	900.00	0.00	0.00	Start Build 1.50	
1,509.09	1,506.51	16.18	45.68	Start 3086.68 hold at 1509.09 MD	
4,595.77	4,554.03	179.78	507.68	Start Drop -1.50	
5,204.86	5,160.54	195.96	553.36	Start 500.00 hold at 5204.86 MD	
5,704.86	5,660.54	195.96	553.36	Start Build 12.00	
6,457.30	6,138.00	-283.76	566.73	Start 9758.50 hold at 6457.30 MD	
16,215.80	6,088.00	-10,038.35	838.54	TD at 16215.80	