

Reference Area Photographs

Inspection Conducted on August 13, 2014

Linn Energy

Site CD-32

Location ID #335842

Pit Facility ID #421661

(Pit ID assigned in Form 15 but not found in database)

Latham 32-24D



Sign at the entrance



Production pit fenced and netted

Latham 32-24D



Inactive pit with some water.



One well is connected to the Frac tank by piping.

Latham 32-24D



Staining around well and on sign. API 045 13689



Stained sign.

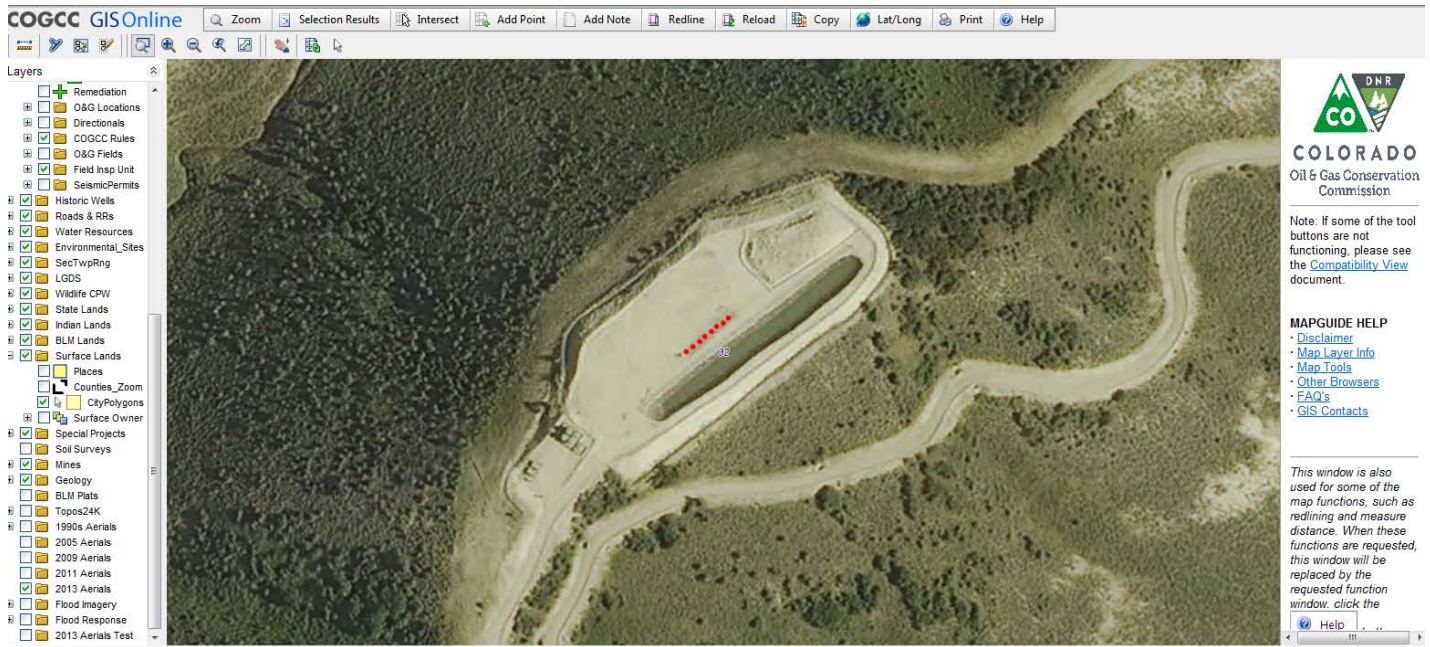


Several stockpiles with older and newer material. Stockpiles extent along the north section of the pad



Material dumped over a stockpile berm.

Latham 32-24D



2013 Aerial Photo from COGCC GIS Online. In August 2014 there is approximately three times more material stockpiled on the north section of the pad than in 2013.