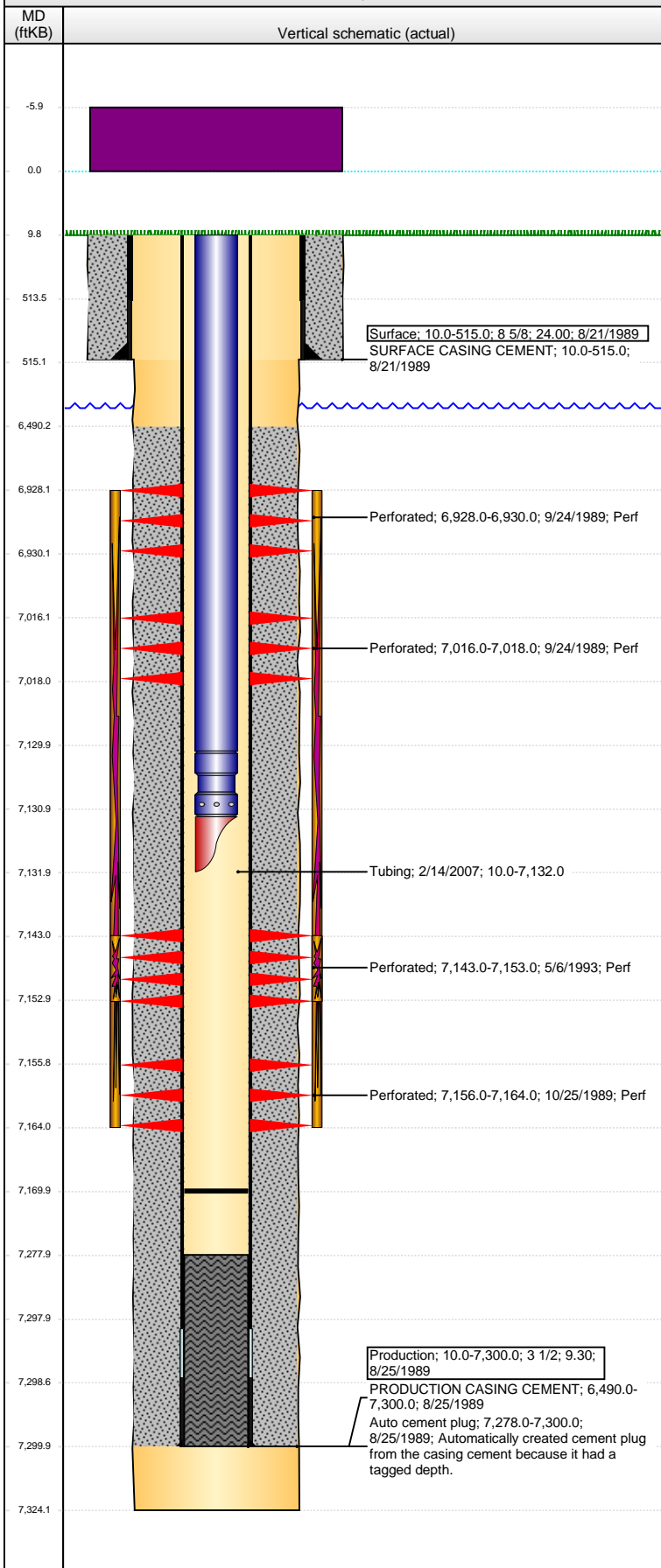


**Well Name: M D RADKE 22-01**

VERTICAL - ORIGINAL HOLE, 9/17/2014 8:47:33 AM



## Well Header

API 05-123-14373	Business Unit DJ BASIN	District 15	Well Config VERTICAL
Original KB Elevation (ft) 4,823.00	KB - GL / MSL (ftKB) 10.00	Spud Date 8/21/1989	P & A Date

Comment  
NO ORIGINAL DRILL INFO, DATA OFF STATE REPORTS

NO OPEN HOLE LOGS

LOCATION DISCREPANCY: ST COMP RPT 2040 FNL 640 FWL; PERMIT 1980 FNL 660 FWL

Directions To Well

## Congressional Location

Quarter 1	Quarter 2	Quarter 3	Quarter 4	Section	Township	Twnshp N...	Range	Rng E/W Dir
		SW	NW	22	3	N	65	W

## Bottom Hole Location

North-South Distance (ft)	From N or S Line	East-West Distance (ft)	From E or W Line

## Plug Back Total Depths

Date	Depth (ftKB)	Method	Com
9/22/1989	7,278.0	CASED HOLE LOG	DEPTH LOGGER ON CBL
5/5/1993	7,214.0	TAG	TAGGED BOTTOM
2/13/2007	7,170.0	TAG	TAG TO LAND TUBING

## Wellbore Sections

Section Des	Size (in)	Act Top, MD (ftKB)	Act Btm, MD (ftKB)
SURFACE	12 1/4	10.0	515.0
PRODUCTION	7 7/8	515.0	7,324.0

## Zone Statuses

Zone Name	Status Date	Status	Job
CODELL	10/27/1989	PR	DRILLING/COMPLETION - ORIGINAL, 8/21/1989 00:00
CODELL	5/13/1993	PR	RE-FRAC, 5/4/1993 00:00
CODELL	12/15/2004	PR	TRI-FRAC, 12/8/2004 00:00
NIOBRARA	10/27/1989	PR	DRILLING/COMPLETION - ORIGINAL, 8/21/1989 00:00
NIOBRARA	5/13/1993	PR	RE-FRAC, 5/4/1993 00:00

## Casing Strings

### Surface, 515.0ftKB

Casing Description	Run Date	OD (in)	Wt/Len (l...)	Grade	Top, MD (ft...)	MD (ftKB)
Surface	8/21/1989	8 5/8	24.00		10.0	515.0

### Production, 7,300.0ftKB

Casing Description	Run Date	OD (in)	Wt/Len (l...)	Grade	Top, MD (ft...)	MD (ftKB)
Production	8/25/1989	3 1/2	9.30		10.0	7,300.0

## Cement

Description	Top Depth (ftKB)	Bottom Depth (ftKB)
SURFACE CASING CEMENT	10.0	515.0
Description	Top Depth (ftKB)	Bottom Depth (ftKB)
PRODUCTION CASING CEMENT	6,490.0	7,300.0

## Tubing Components

Item Des	OD (in)	Wt (lb/ft)	Grade	Jts	Len (ft)	Btm (ftKB)	Btm (TVD) (ftKB)
Tubing	2 1/16				7,120.00	7,130.0	
Seating Nipple	2 1/16				1.00	7,131.0	
Mule Shoe	2 1/16				1.00	7,132.0	

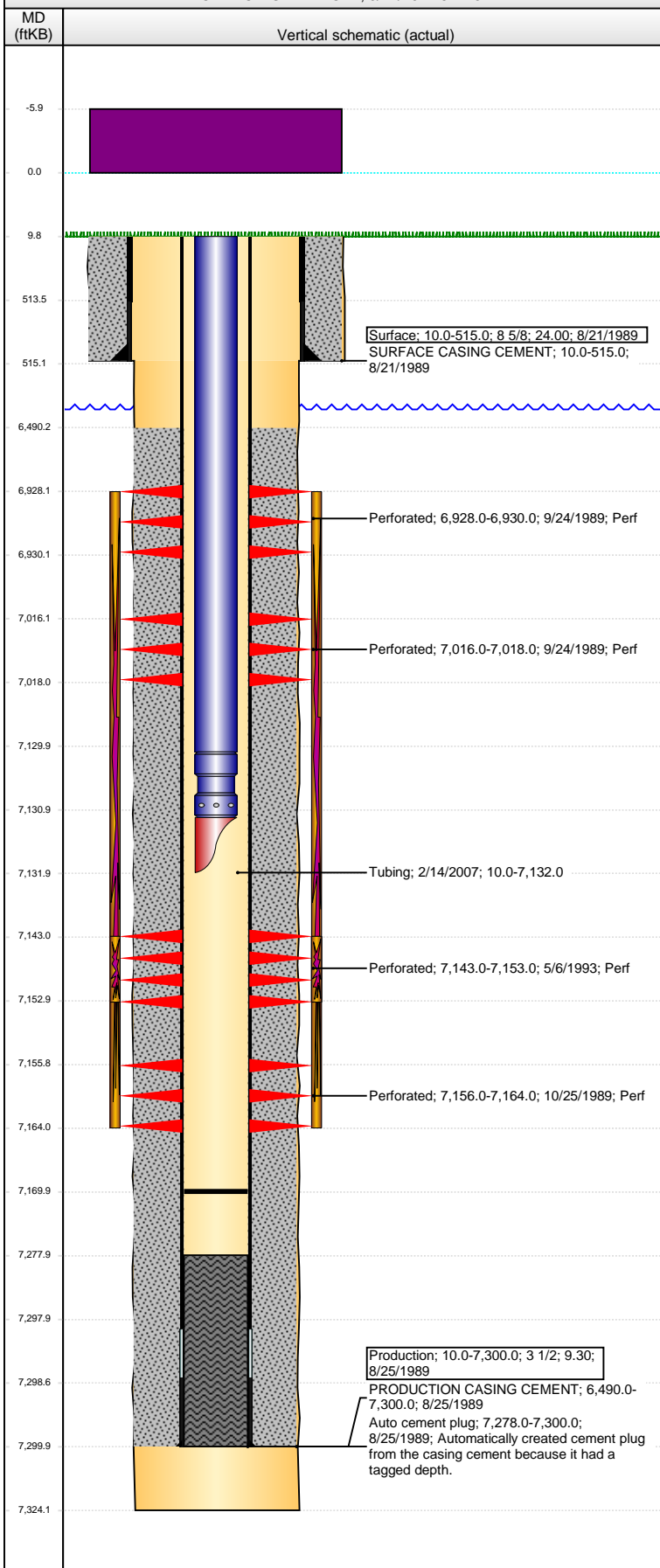
## Perforation Data

Zone	Bnch/St g	Entered Shot Total	Top (ftKB)	Btm (ftKB)	Date
NIOBRARA, ORIGINAL HOLE		4	6,928.00	6,930.00	9/24/1989
NIOBRARA, ORIGINAL HOLE		2	7,016.00	7,018.00	9/24/1989
CODELL, ORIGINAL HOLE		40	7,143.00	7,153.00	5/6/1993
CODELL, ORIGINAL HOLE		8	7,156.00	7,164.00	10/25/1989

Production; 10.0-7,300.0; 3 1/2; 9.30; 8/25/1989  
PRODUCTION CASING CEMENT; 6,490.0-7,300.0; 8/25/1989  
Auto cement plug; 7,278.0-7,300.0; 8/25/1989; Automatically created cement plug from the casing cement because it had a tagged depth.

**Well Name: M D RADKE 22-01**

VERTICAL - ORIGINAL HOLE, 9/17/2014 8:47:34 AM



## Stimulations & Treatments

Date	9/25/1989	Zone	NIORBARA-CODELL, ORIGINAL HOLE	Primary Job Type	DRILLING/COMPLETION - ORIGINAL
Technical Result		Tech Result Details		Tech Result Note	
Comment					
LIMITED ENTRY FRAC					
Date	5/6/1993	Zone	CODELL, ORIGINAL HOLE	Primary Job Type	RE-FRAC
Technical Result		Tech Result Details		Tech Result Note	
Comment					
Date	12/14/2004	Zone	CODELL, ORIGINAL HOLE	Primary Job Type	TRI-FRAC
Technical Result		Tech Result Details		Tech Result Note	
Comment					
Other In Hole					
Run Date	Des		OD (in)	Top (ftKB)	Btm (ftKB)
Logs					
Date	Type		Top, MD (ftKB)	Btm, MD (ftKB)	
9/22/1989	CEMENT BOND		6,400.0	7,275.0	
5/4/1993	CEMENT BOND		4,200.0	7,203.0	