

# REYNOLDS 24-24

Existing Features	
KB	14

Bottom of Foxhills (FHM)	N/A
--------------------------	-----

8-5/8" Surface csg shoe at	768
----------------------------	-----

TOC (CBL)	3250
-----------	------

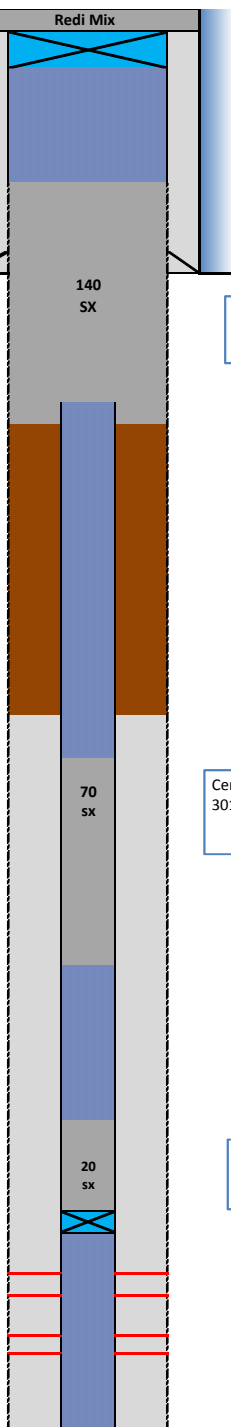
Sussex	Top	4172
--------	-----	------

Sussex	Base	4334
--------	------	------

Shannon	Bottom	4748
---------	--------	------

Niobrara Geologic Top		7104
Cod	Perf Top	7105
	Perf Bottom	7242
Geologic Top		
Cod	Perf Top	7370
	Perf Bottom	7386

PBMD	7482
4-1/2" 15.1# CSG	7516



Proposed Additions for P&A	
80	CIBP (8-5/8")

500	TOC
-----	-----

Cement Blend: Type III w/ cello flake and CaCl<sub>2</sub>, mixed at 14.8 ppg and 1.33 cuft/sk. with 40%

900	Casing Stub
1000	Bottom of cement

3950	Top of cement (tag)
------	---------------------

Cement Blend: "G" w/ 0.4% CD-32, 0.4% ASA - 301, mixed at 15.8 ppg and 1.15 cuft/sk

4850	Bottom of cement
------	------------------

6700	TOC
------	-----

Cement Blend: "G" w/ 20% silica flour, 0.4% CD -32, 0.4% ASA -301 and R-3 to achieve 2:30 pump time mixed at 15.8 ppg and 1.38 cuft/sk

7025	CIBP
------	------

API# 0512324337				
Well: REYNOLDS 24-24				
Equipment	Specs.	Depth	Capacity (bbl/ft)	Capacity ft <sup>3</sup> /ft
Surface Casing	8-5/8" 24#	346	0.0636	0.3575
Production Casing	4.50 (11.6#)	7376	0.0155	0.0872
Tubing Size				
Bit Size	6 1/4		0.0379	0.2131
Hole Size	8.5		0.0702	0.3941
Hole Size	9.5		0.0877	0.4922
Hole Size	11.5		0.1285	0.7213

Cement Calculations				
Section	Volume cu-ft	Cement Sacks	Excess	Top Plug
S/C hole	95.81	72.04		8.5" Caliper to 3200'
Open Hole	72.82	54.75	40%	
P/C	11.34	8.53	40%	
Total Top Plug	179.98	135.32	140	
186.2		cu-ft		

In Hole				SX/ SH Plug
In pipe	78.48	68.24		
Total	78.48	68.24	70	
80.5		cu-ft		

Cement Yield	1.33	1.15	1.71	1.38
	Top Plug	SX/SH	NB/Cd Squeeze	NB/Cd in pipe

NB csg	28.34	20.54		NB/CD Plug
Total	28.34	20.54	20	

Legend	
	Existing cement with CBL
	assumed cement w/ no CBL
	cast iron cement retainer
	cast iron bridge plug
	mud
	2% KCL Water