

Rademacher 11-30A 05-123-17571 - Planned WBD (P&A)

12-1/4" Surface Hole

7-7/8" Prod Hole

Existing

KB: 4862'

GL: 4852'

8 5/8", 24# Sfc Csg set @ 616'

Fox Hills Marker 740'

Sussex Top @ 4105'

TOC 6120' CBL 11/24/93

Niobrara Top @ 6917'

Niobrara perfs 6926'-7055'

Codell perfs 7179' - 7192'

4 1/2" 11.6# Prod Csg @ 7327'

TD @ 7337' 7/14/93

J sand Perfs 7626'-7652'

2 7/8" Liner 7272'-7913'

Deepened TD 7913' 2/14/2001

Planned

Welded Cap

Cement to surface

CIBP @ 80'

250 sk cmt plug 1040' - 416'

Cut 4 1/2 csg off @ 940'

TOC ID 3740'

Top Perf 3900'

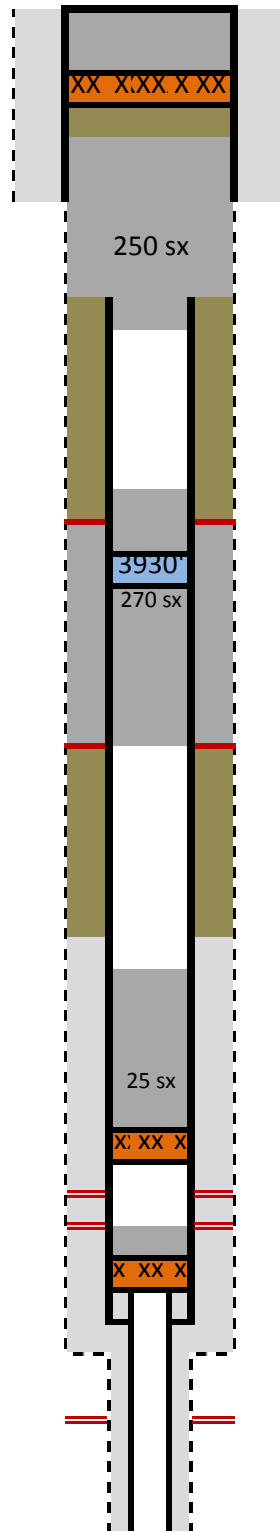
CICR set @ 3930'

Bottom Perf 4320'

Cement Plug 25 sx 6850'-6450'

CIBP @ 6850'

CIBP w/ 2 sx cement cap @ 7270'



- Mud
- Existing Cement
- New Cement
- Sand Plug
- CIBP
- CICR