



WARRIOR
ENERGY SERVICES

RADIAL CEMENT BOND
GAMMA RAY
CCL

Company KERR MCGEE OIL AND GAS
Well LOVELAND 8-3
Field WATTENBERG
County WELD State CO

Location: API # : 05-123-22269

SHL: 2072 FNL & 503' FEL SE/NE

Other Services

SEC 3 TWP 4N RGE 67W

Elevation

Permanent Datum GL KB 12'
Log Measured From KB 12'
Drilling Measured From KB

K.B. 4752'
D.F. 4751'
G.L. 4740'

Company KERR MCGEE OIL AND GAS
Well LOVELAND 8-3
Field WATTENBERG
County WELD
State CO

Date 9-12-2014

Run Number ONE
Depth Driller 7350'
Depth Logger 1660'
Bottom Logged Interval 1657'
Top Log Interval SURFACE
Open Hole Size 7.875
Type Fluid WATER
Density / Viscosity 1.0
Max. Recorded Temp. 85 DEG F
Estimated Cement Top 232'
Time Well Ready N/A
Time Logger on Bottom N/A
Equipment Number 4310
Location GREELEY
Recorded By N. BREHMER
Witnessed By B. SMITH

Run Number ONE
Bit 12.25" From SURFACE To 628'
TWO 7.875" 629' 7350'

Casing Record
Surface String 8.63 Wgt/Ft 24# Top SURFACE Bottom 618'

Prot. String
Production String 4.5 11.6# SURFACE 7329'

Liner

<<< Fold Here >>>

All interpretations are opinions based on inferences from electrical or other measurements and we cannot and do not guarantee the accuracy or correctness of any interpretation, and we shall not, except in the case of gross or willful negligence on our part, be liable or responsible for any loss, costs, damages, or expenses incurred or sustained by anyone resulting from any interpretation made by any of our officers, agents or employees. These interpretations are also subject to our general terms and conditions set out in our current Price Schedule.



Comments

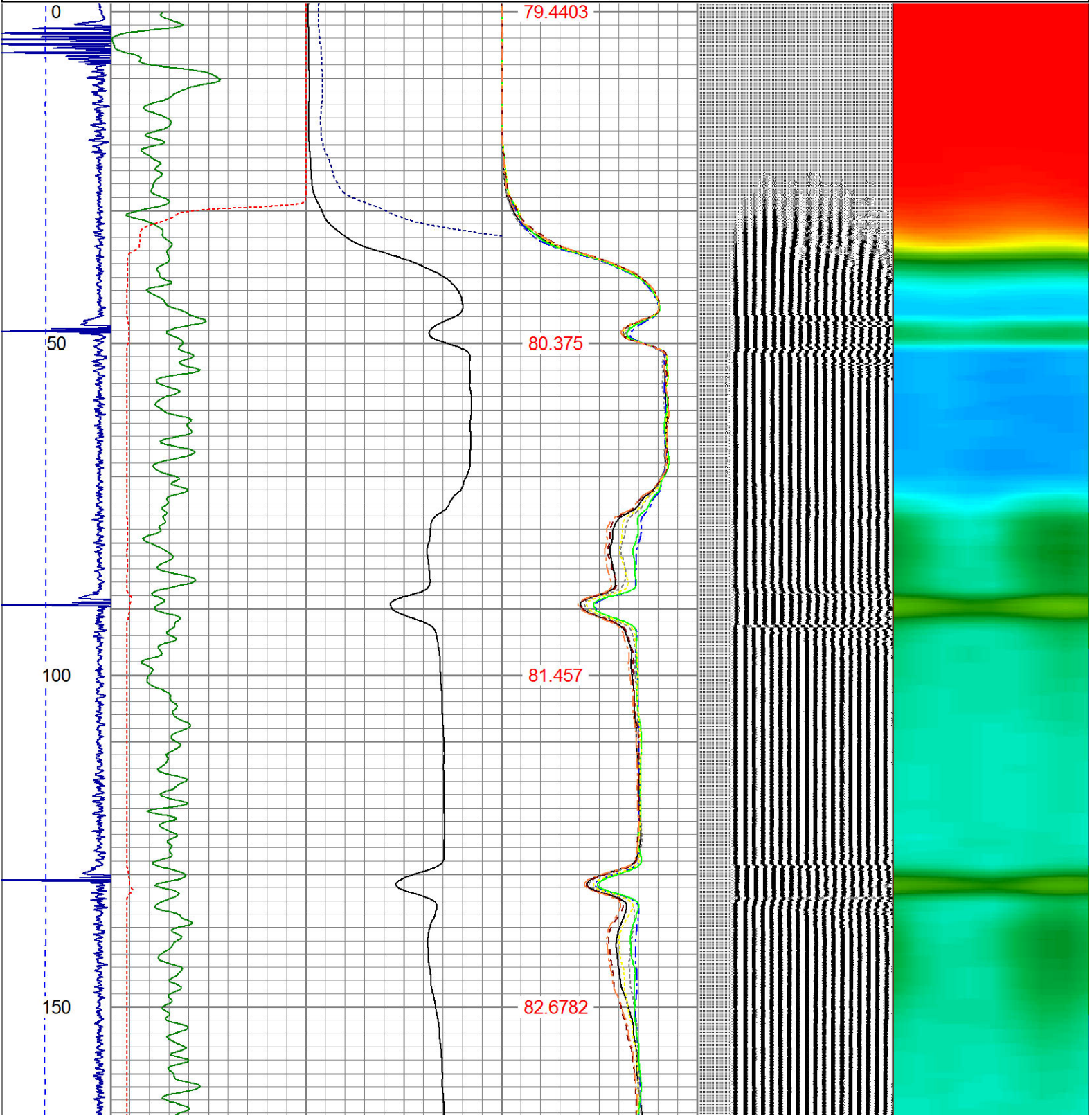
RAN CBL TO VERIFY CEMENT BOND

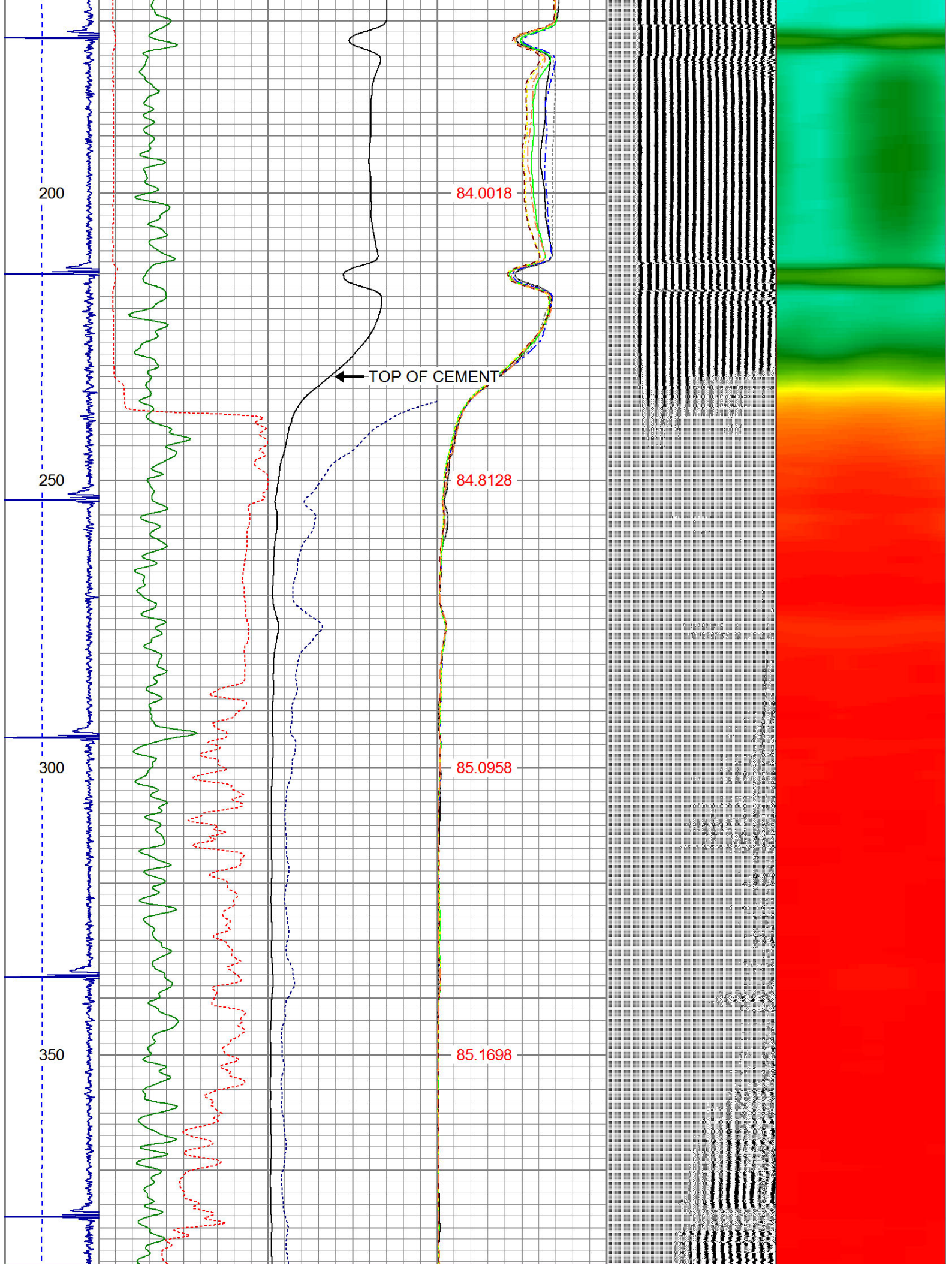
THANK YOU FOR USING WARRIOR !!!!!!!

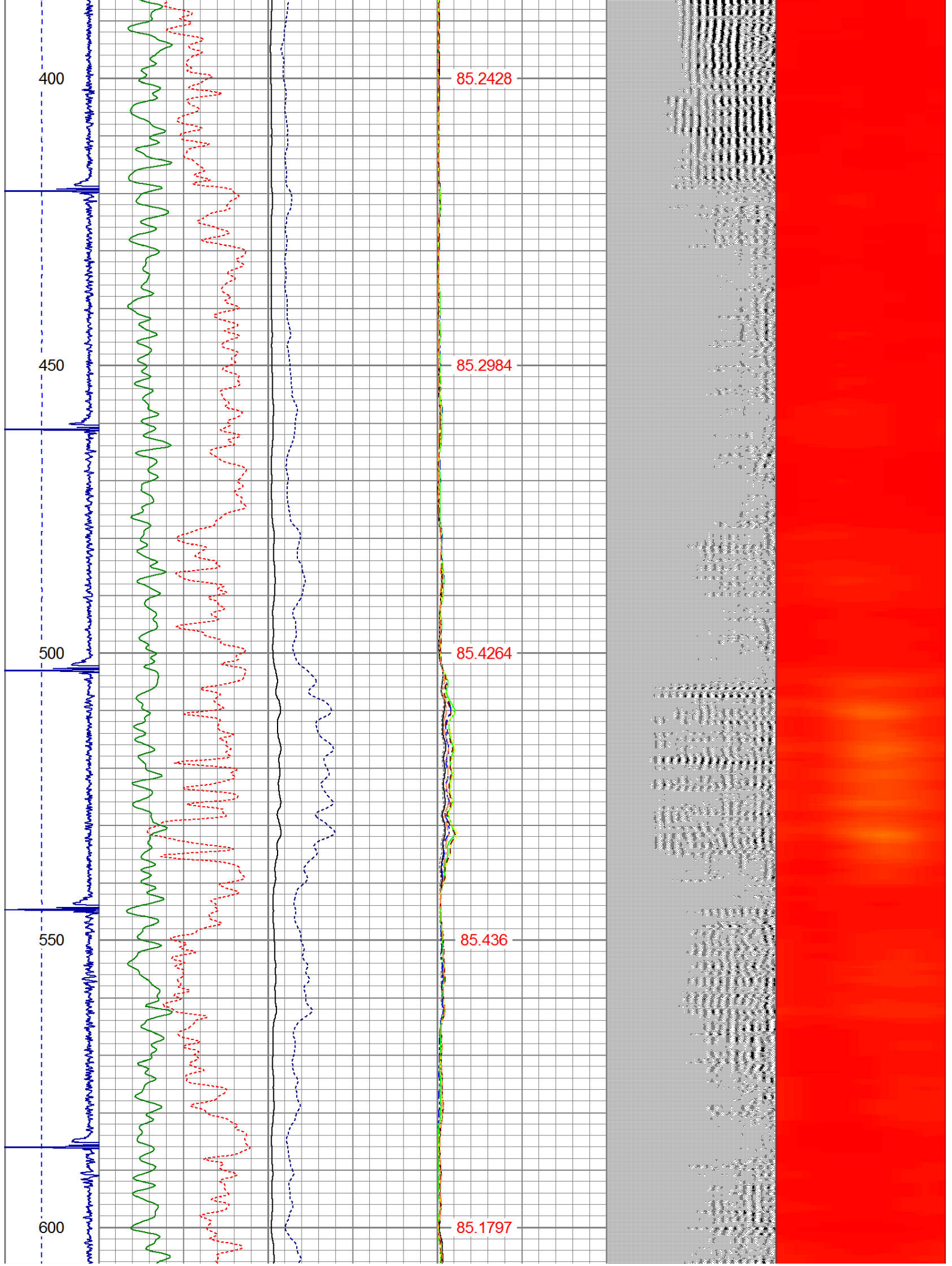
Sensor	Offset (ft)	Schematic	Description	Len (ft)	OD (in)	Wt (lb)

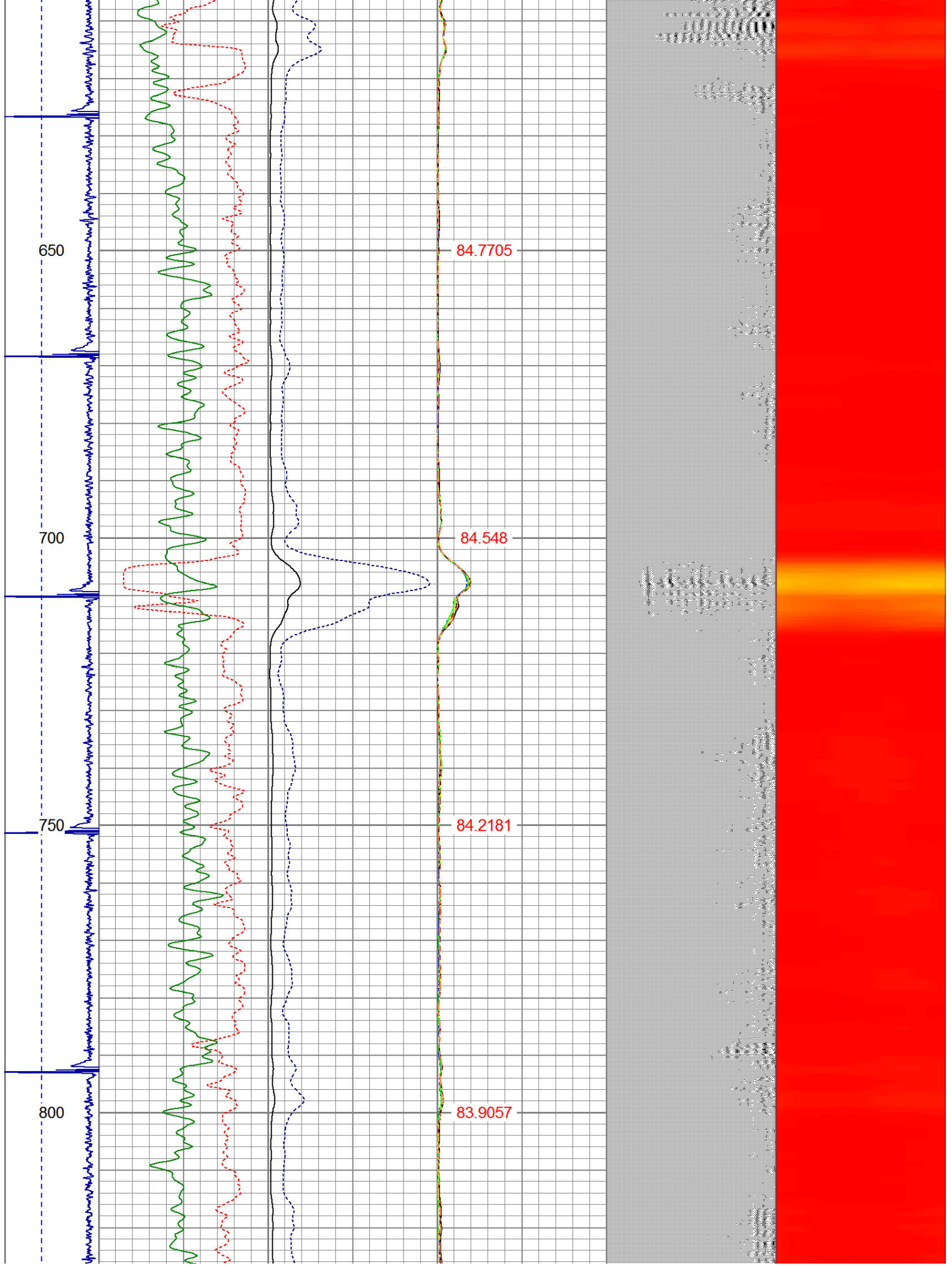
			PTS275	2.83	2.75	
HEADVOLT	16.13					
IntTemp	14.71					
WVF3FT	11.46		RBT-Probe (Base)	8.92	2.75	90.00
WVFCAL	11.46		Probe Radii Bond Tool with Digital Telemetry			
WVFS1	11.46					
WVFS2	11.46					
WVFS3	11.46					
WVFS4	11.46					
WVFS5	11.46					
WVFS6	11.46					
WVFS7	11.46					
WVFS8	11.46					
WVF5FT	10.46					
CNLSC	6.00		CNT-Probe_B (275)	2.88	2.75	40.00
CNSSC	5.17		6 bow centralizer			
CCL	3.64					
			GR-Probe (275)	4.33	2.75	30.00
			Probe 2.75"			
GR	0.90					
Dataset: loveland 8-3.db: field/well/run1/pass2 Total Length: 18.96 ft Total Weight: 160.00 lb O.D. 2.75 in						

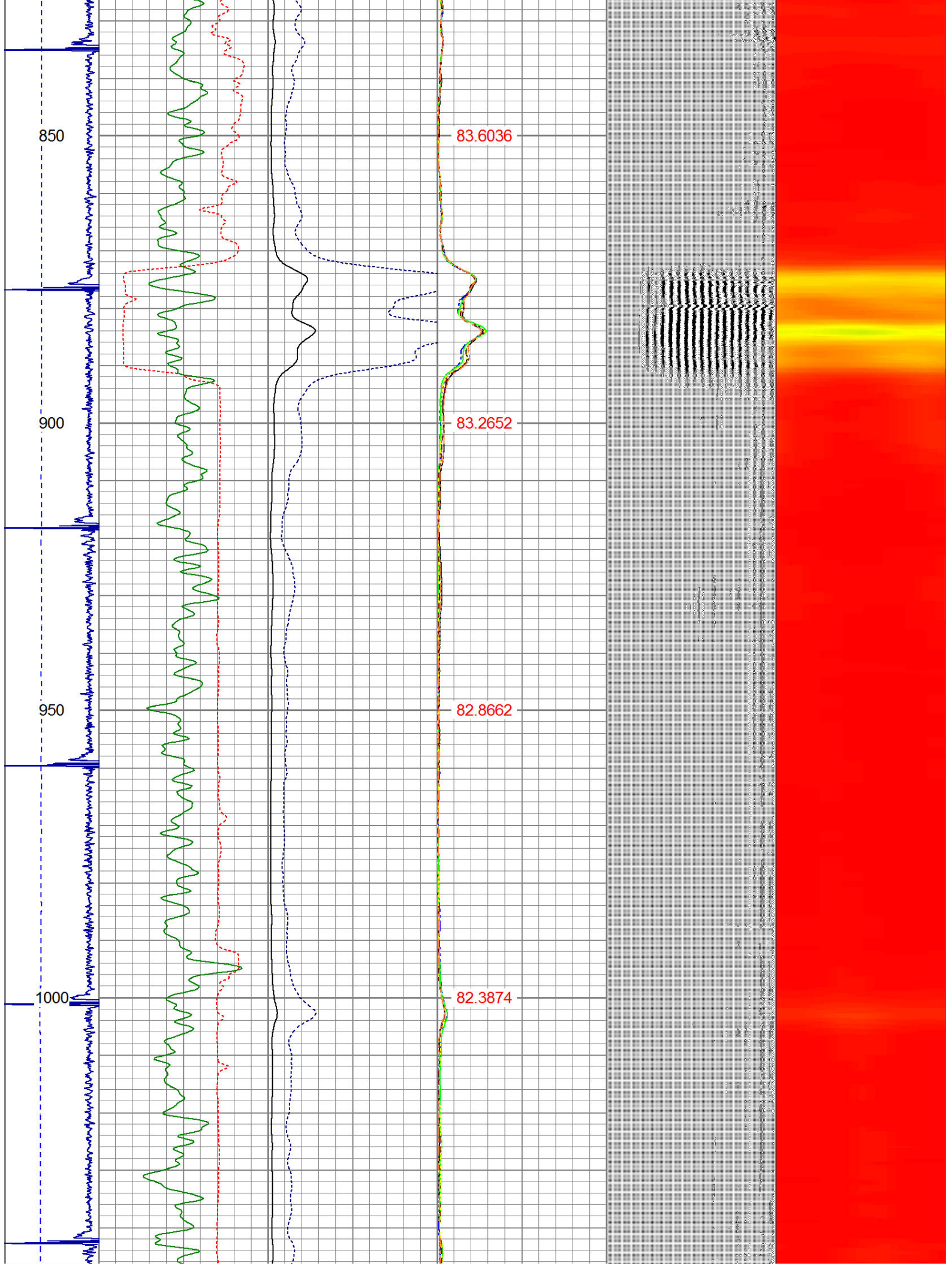
Dataset Creation:		Fri Sep 12 07:16:59 2014 by Log 7.0 B1																								
Charted by:		Depth in Feet scaled 1:240																								
-9	CCL	1	200	TT (usec)	1000	0	AMP (mV)	100	0	AMPS1	100	200	VDL	1200	1	Cement Map	8									
LSPD (ft/min)	0		0	GR (GAPI)	200	0	AMPx5 (mV)	20	0	AMPS2	100					1 100										
	200		200	GR (GAPI)	400					0	AMPS4	100														
0		250								0	AMPS5	100														
										0	AMPS6	100														
										0	AMPS7	100														
										0	AMPS8	100														
										IntTemp																
										(degF)																

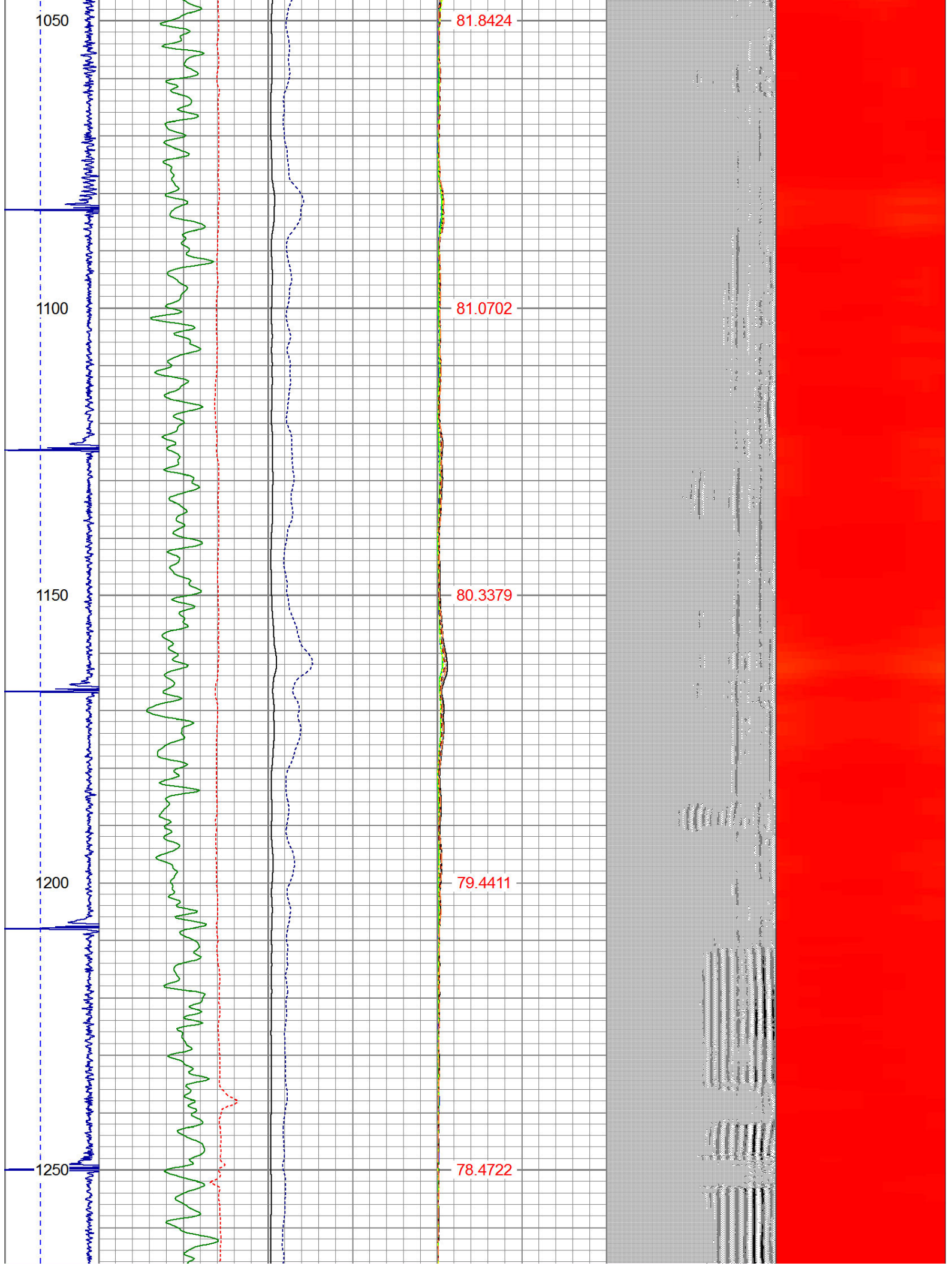


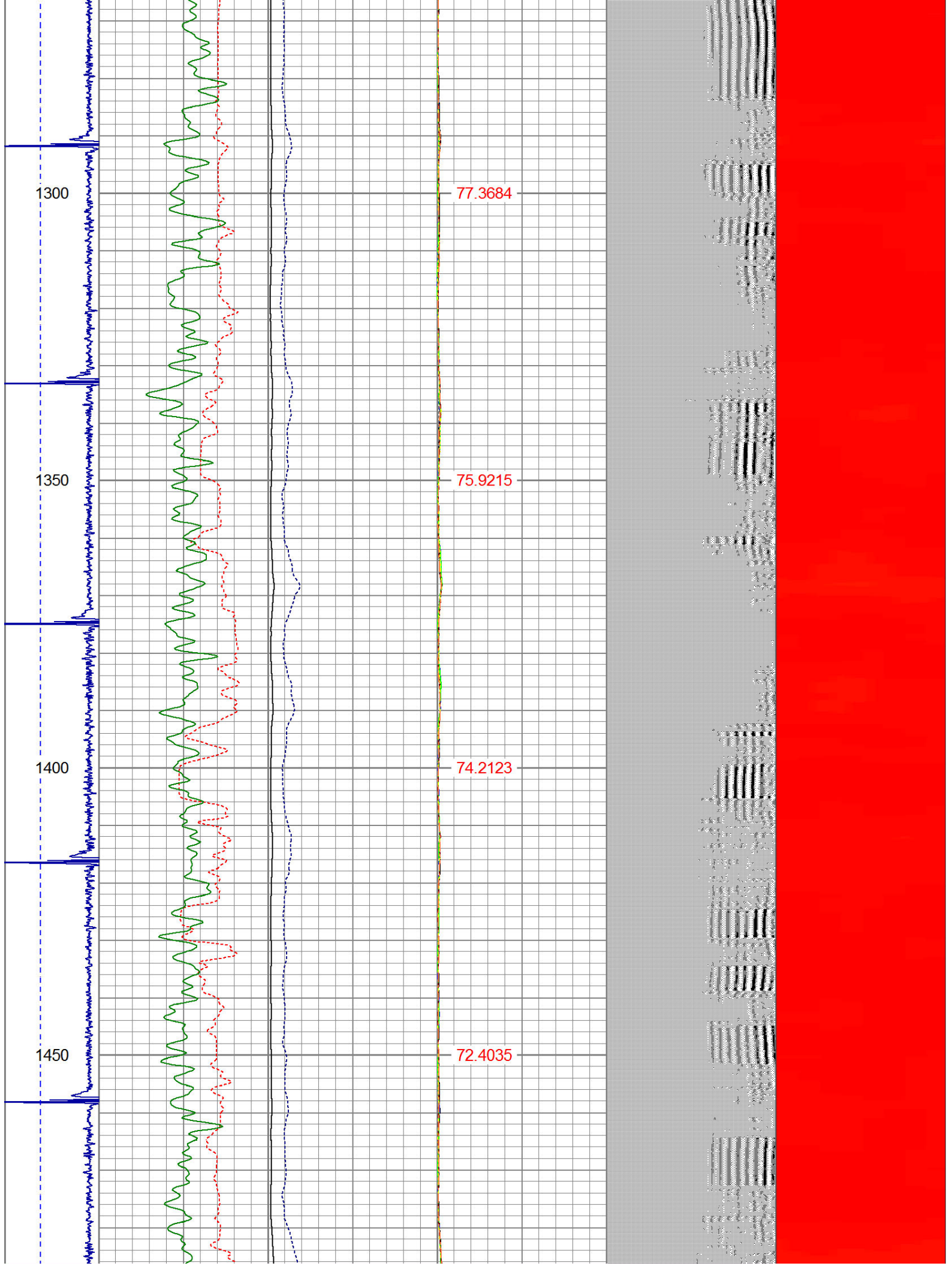


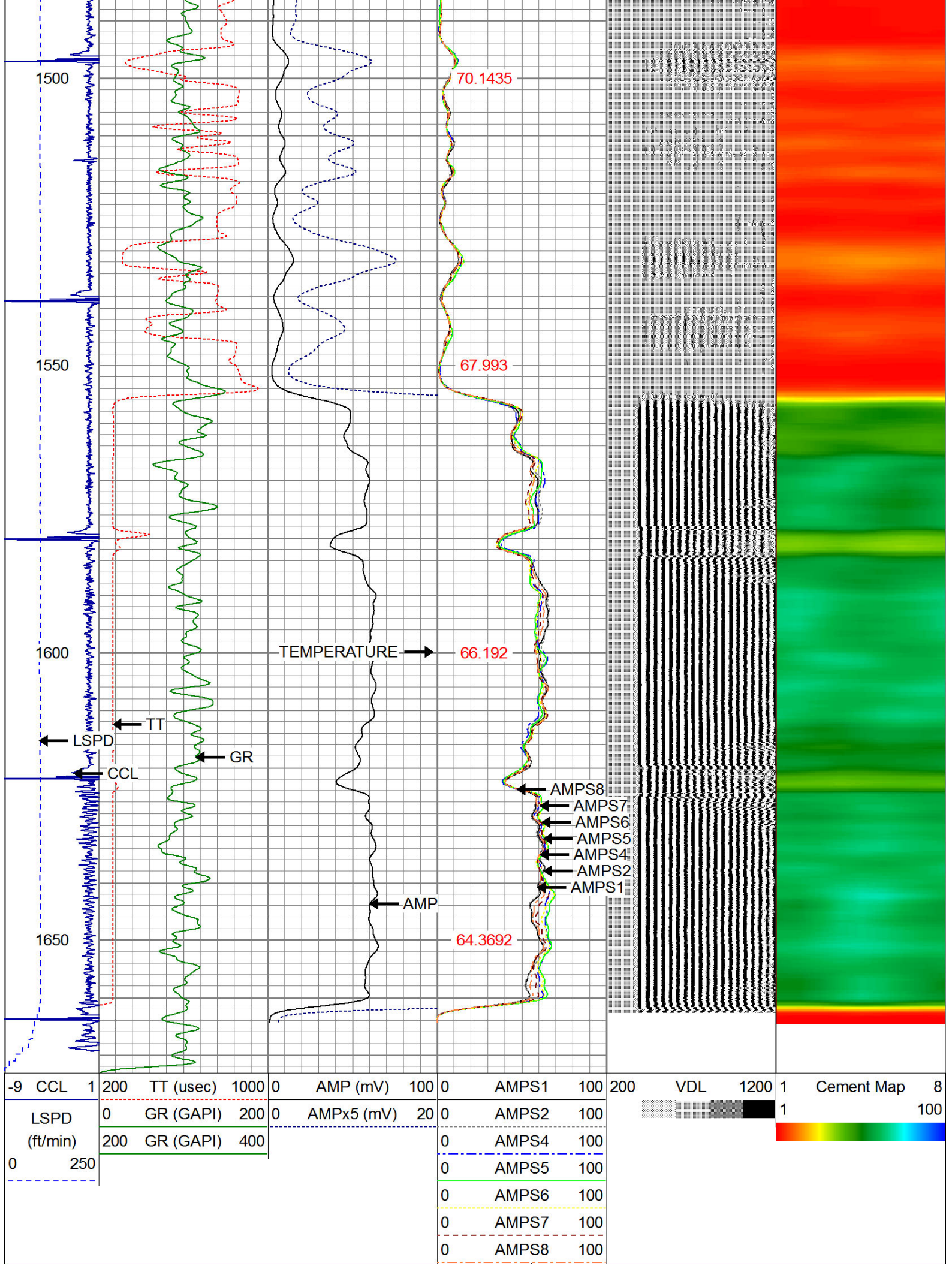












IntTemp
(degF)



WARRIOR
ENERGY SERVICES

Company KERR McGEE OIL AND GAS

Well LOVELAND 8-3

Field WATTENBERG

County WELD

State CO