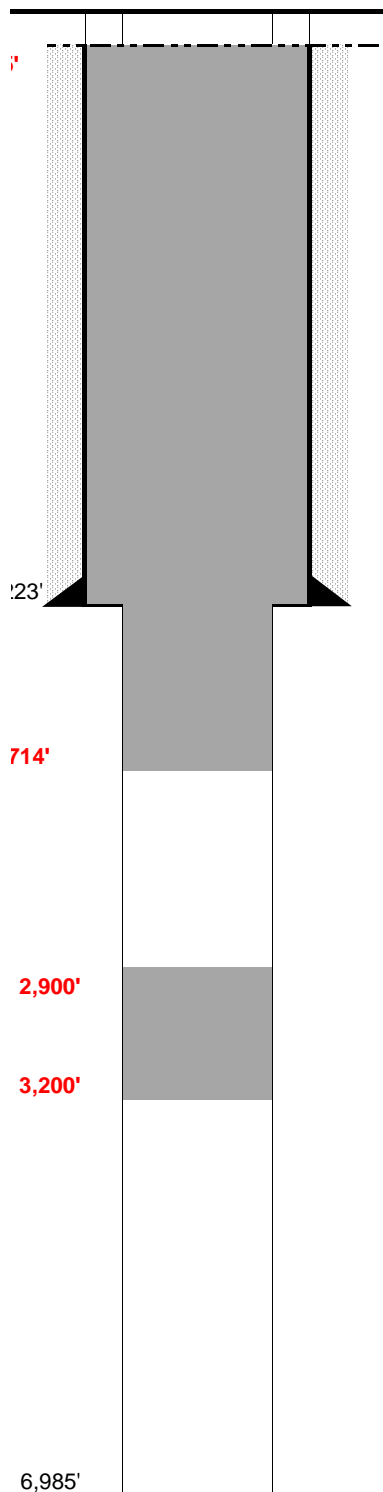


WELL NAME:	Duell Et Al #1-26
OPERATOR:	Carrizo Oil & Gas
COMP ZONE:	J Sand
LOCATION:	8N 60W S26 NE NE

COUNTY:	Weld
STATE:	Colorado
API :	05-123-09264
GL/KB:	4899' / 4909'

SPUD: 7/29/77
COMP: 8/7/77
ABDN: 4/16/14
COGCC: DA



SURFACE CASING

DEPTH: 226' SIZE: 8.625" GRADE: _____ WT (#/ft): 24.0
CEMENT: 200 sx
COMMENTS: _____

PRODUCTION CASING

DEPTH: _____ SIZE: _____ GRADE: _____ WT (#/ft): _____
CEMENT: _____ TOC: _____
COMMENTS: _____

PERFS: _____ - _____ PROD ZONE 1: _____ D Sand
 PERFS: _____ - _____ ZONE 2: _____
 PERFS: _____ - _____ ZONE 3: _____

PREVIOUS PLUGS

RECOVERED: _____ SIZE: _____

CMT 1: 200' - 250' COMMENT: 20 sx

CMT 2: 0' - 50' COMMENT: 20 sx - surface

CMT 3: _____ - _____ COMMENT: _____

PROPOSED: Plug 1: 300' cement plug from 3,200' to 2,900' (100 sx)
 Plug 2: Cement from 714' to Surface (490 sx)

FORMATIONS:

NIOBRARA:	6,105'
FORT HAYS	6,360'
CODELL	6,408'
CARLILE	6,412'
BENONITE	6,732'
D SAND:	6,840'
J SAND	6,922'