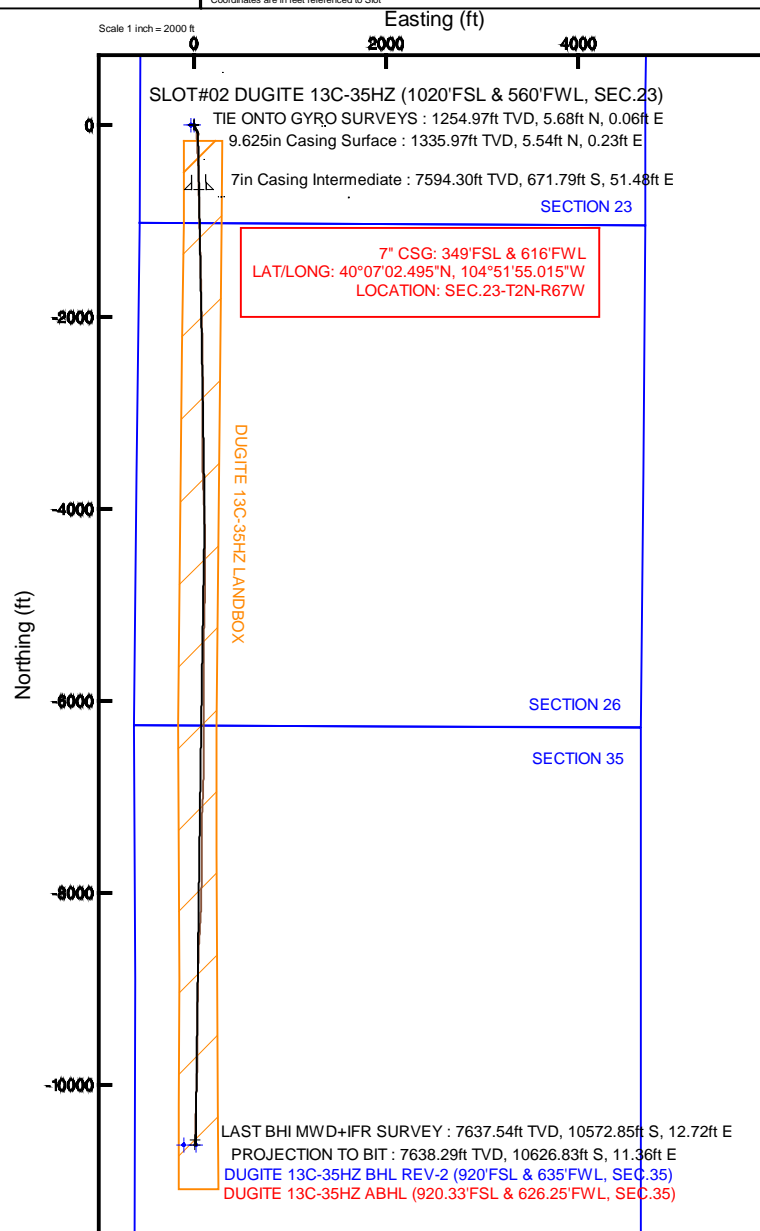
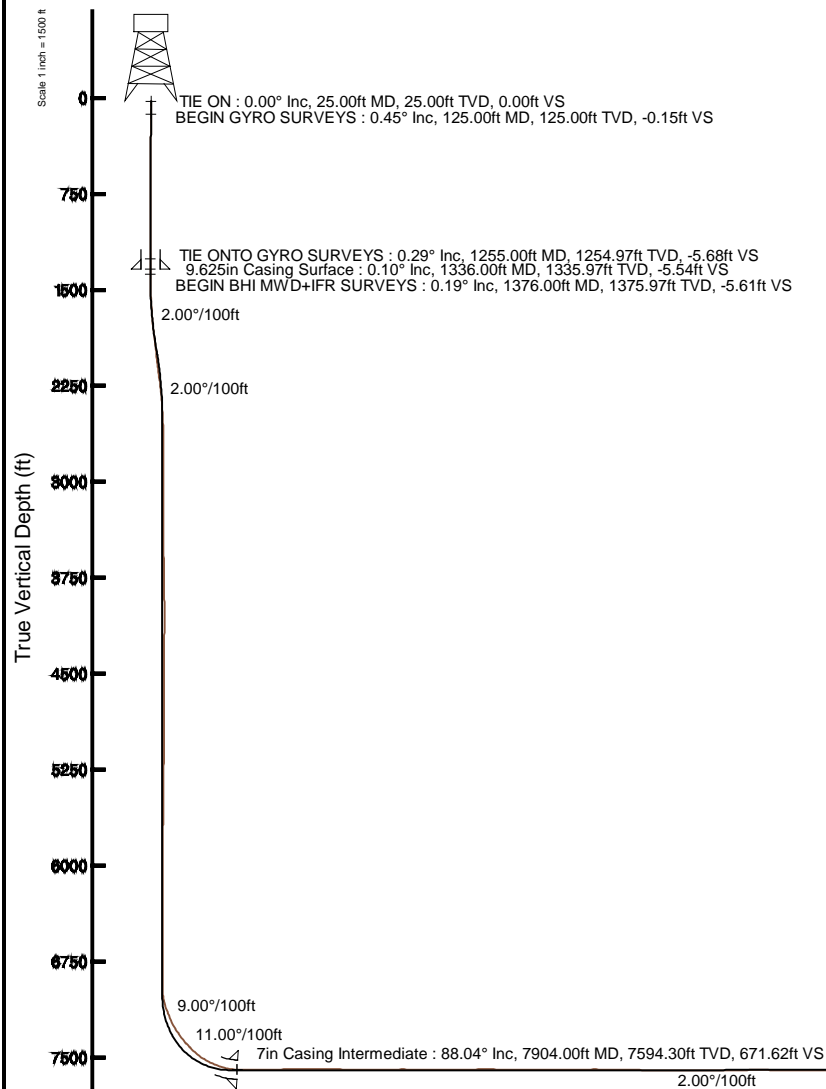


Location:	COLORADO	Slot:	SLOT#02 DUGITE 13C-35HZ (1020'FSL & 560'FWL, SEC.23)
Field:	WELD COUNTY (KERR MCGEE)	Well:	DUGITE 13C-35HZ
Facility:	SEC.23-T2N-R67W	Wellbore:	DUGITE 13C-35HZ PWB

True vertical depths are referenced to H&P 307 (25KB) (RKB)	Grid System: NAD83 / Lambert Colorado SP, Northern Zone (501), US feet
Measured depths are referenced to H&P 307 (25KB) (RKB)	North Reference: True north
H&P 307 (25KB) (RKB) to Mean Sea Level: 4994 feet	Scale: True distance
Mean Sea Level to Mud line (At Slot: SLOT#02 DUGITE 13C-35HZ (1020'FSL & 560'FWL, SEC.23): 0 feet	Depths are in feet
Coordinates are in feet referenced to Stok	Created by: robaleo@n on 14/Jul/2014



LAST BHI MWD+IFR SURVEY : 89.20° Inc, 17809.00ft MD, 7637.54ft TVD, 10572.75ft VS
PROJECTION TO BIT : 89.20° Inc, 17863.00ft MD, 7638.29ft TVD, 10626.73ft VS

Vertical Section (ft)
Azimuth 180.19° with reference 0.00 N, 0.00 E

Scale 1 inch = 1500 ft

Actual Wellpath Report

DUGITE 13C-35HZ AWP

Page 1 of 7

REFERENCE WELLPATH IDENTIFICATION

Operator	KERR-MCGEE OIL & GAS ONSHORE LP	Slot	SLOT#02 DUGITE 13C-35HZ (1020'FSL & 560'FWL, SEC.23)
Area	COLORADO	Well	DUGITE 13C-35HZ
Field	WELD COUNTY (KERR MCGEE)	Wellbore	DUGITE 13C-35HZ AWB
Facility	SEC.23-T2N-R67W		

REPORT SETUP INFORMATION

Projection System	NAD83 / Lambert Colorado SP, Northern Zone (501), US feet	Software System	WellArchitect® 4.0.0
North Reference	True	User	Robiale01
Scale	0.999959	Report Generated	14/Jul/2014 at 15:58
Convergence at slot	n/a	Database/Source file	WellArchitectDB/DUGITE_13C-35HZ_AWB.xml

WELLPATH LOCATION

	Local coordinates		Grid coordinates		Geographic coordinates	
	North[ft]	East[ft]	Easting[US ft]	Northing[US ft]	Latitude	Longitude
Slot Location	0.00	29.91	3177454.71	1286904.89	40°07'09.134"N	104°51'55.678"W
Facility Reference Pt			3177424.80	1286904.67	40°07'09.134"N	104°51'56.063"W
Field Reference Pt			3197771.84	1268891.29	40°04'09.600"N	104°47'36.000"W

WELLPATH DATUM

Calculation method	Minimum curvature	H&P 307 (25'KB) (RKB) to Facility Vertical Datum	4994.00ft
Horizontal Reference Pt	Slot	H&P 307 (25'KB) (RKB) to Mean Sea Level	4994.00ft
Vertical Reference Pt	H&P 307 (25'KB) (RKB)	H&P 307 (25'KB) (RKB) to Mud Line at Slot (SLOT#02 DUGITE 13C-35HZ (1020'FSL & 560'FWL, SEC.23))	4994.00ft
MD Reference Pt	H&P 307 (25'KB) (RKB)	Section Origin	N 0.00, E 0.00 ft
Field Vertical Reference	Mean Sea Level	Section Azimuth	179.94°

REFERENCE WELLPATH IDENTIFICATION

Operator	KERR-MCGEE OIL & GAS ONSHORE LP	Slot	SLOT#02 DUGITE 13C-35HZ (1020'FSL & 560'FWL, SEC.23)
Area	COLORADO	Well	DUGITE 13C-35HZ
Field	WELD COUNTY (KERR MCGEE)	Wellbore	DUGITE 13C-35HZ AWB
Facility	SEC.23-T2N-R67W		

WELLPATH DATA (174 stations) † = interpolated/extrapolated station

MD [ft]	Inclination [°]	Azimuth [°]	TVD [ft]	Vert Sect [ft]	North [ft]	East [ft]	Latitude	Longitude	DLS [°/100ft]	Comments
0.00†	0.000	292.030	0.00	0.00	0.00	0.00	40°07'09.134"N	104°51'55.678"W	0.00	
25.00	0.000	292.030	25.00	0.00	0.00	0.00	40°07'09.134"N	104°51'55.678"W	0.00	TIE ON
125.00	0.450	292.030	125.00	-0.15	0.15	-0.36	40°07'09.135"N	104°51'55.683"W	0.45	BEGIN GYRO SURVEYS
225.00	0.700	336.480	224.99	-0.86	0.85	-0.97	40°07'09.142"N	104°51'55.691"W	0.49	
325.00	0.630	357.460	324.99	-1.97	1.96	-1.24	40°07'09.153"N	104°51'55.694"W	0.25	
425.00	0.300	50.570	424.98	-2.68	2.68	-1.06	40°07'09.160"N	104°51'55.692"W	0.51	
525.00	0.120	72.450	524.98	-2.88	2.88	-0.76	40°07'09.162"N	104°51'55.688"W	0.19	
625.00	0.140	40.140	624.98	-3.00	3.00	-0.58	40°07'09.164"N	104°51'55.685"W	0.07	
725.00	0.240	335.200	724.98	-3.29	3.29	-0.59	40°07'09.166"N	104°51'55.686"W	0.22	
825.00	0.450	348.920	824.98	-3.86	3.86	-0.75	40°07'09.172"N	104°51'55.688"W	0.22	
925.00	0.450	356.970	924.98	-4.64	4.64	-0.85	40°07'09.180"N	104°51'55.689"W	0.06	
1025.00	0.340	41.500	1024.98	-5.25	5.25	-0.67	40°07'09.186"N	104°51'55.687"W	0.32	
1125.00	0.250	58.070	1124.97	-5.59	5.59	-0.29	40°07'09.189"N	104°51'55.682"W	0.12	
1225.00	0.120	71.730	1224.97	-5.74	5.74	-0.01	40°07'09.191"N	104°51'55.678"W	0.14	
1255.00	0.290	149.000	1254.97	-5.68	5.68	0.06	40°07'09.190"N	104°51'55.677"W	0.96	TIE ONTO GYRO SURVEYS
1376.00	0.190	18.780	1375.97	-5.61	5.61	0.28	40°07'09.189"N	104°51'55.674"W	0.36	BEGIN BHI MWD+IFR SURVEYS
1468.00	1.260	144.720	1467.97	-4.93	4.93	0.92	40°07'09.183"N	104°51'55.666"W	1.50	
1561.00	3.110	167.390	1560.90	-1.63	1.63	2.06	40°07'09.150"N	104°51'55.652"W	2.16	
1654.00	3.990	163.430	1653.72	3.93	-3.93	3.53	40°07'09.095"N	104°51'55.633"W	0.98	
1746.00	5.710	161.380	1745.38	11.34	-11.34	5.91	40°07'09.022"N	104°51'55.602"W	1.88	
1840.00	6.920	155.920	1838.81	20.95	-20.94	9.71	40°07'08.927"N	104°51'55.553"W	1.44	
1932.00	8.140	153.530	1930.02	31.84	-31.83	14.87	40°07'08.819"N	104°51'55.487"W	1.37	
2025.00	7.560	149.190	2022.15	43.00	-42.98	20.94	40°07'08.709"N	104°51'55.408"W	0.89	
2118.00	8.480	153.910	2114.24	54.42	-54.39	27.09	40°07'08.597"N	104°51'55.329"W	1.22	
2212.00	8.210	154.080	2207.24	66.69	-66.65	33.07	40°07'08.475"N	104°51'55.252"W	0.29	
2305.00	6.190	145.930	2299.51	76.82	-76.78	38.79	40°07'08.375"N	104°51'55.179"W	2.43	
2397.00	5.240	147.520	2391.05	84.48	-84.43	43.82	40°07'08.300"N	104°51'55.114"W	1.05	
2491.00	3.310	152.420	2484.78	90.51	-90.46	47.38	40°07'08.240"N	104°51'55.068"W	2.09	
2584.00	1.840	139.650	2577.69	94.03	-93.98	49.59	40°07'08.205"N	104°51'55.040"W	1.69	
2678.00	0.110	287.320	2671.67	95.15	-95.10	50.48	40°07'08.194"N	104°51'55.028"W	2.06	
3053.00	0.780	251.880	3046.66	95.84	-95.79	47.71	40°07'08.187"N	104°51'55.064"W	0.18	
3430.00	1.280	252.200	3423.60	97.91	-97.87	41.27	40°07'08.167"N	104°51'55.147"W	0.13	
3525.00	0.290	81.390	3518.59	98.20	-98.16	40.49	40°07'08.164"N	104°51'55.157"W	1.65	
3902.00	1.390	186.670	3895.55	102.60	-102.56	40.91	40°07'08.121"N	104°51'55.151"W	0.40	
3997.00	0.340	168.120	3990.54	104.02	-103.98	40.83	40°07'08.106"N	104°51'55.152"W	1.13	
4091.00	0.550	42.020	4084.54	103.96	-103.92	41.19	40°07'08.107"N	104°51'55.148"W	0.85	
4468.00	0.370	42.960	4461.53	101.73	-101.68	43.23	40°07'08.129"N	104°51'55.122"W	0.05	
4562.00	0.580	330.850	4555.52	101.09	-101.04	43.20	40°07'08.135"N	104°51'55.122"W	0.62	
4940.00	0.030	328.120	4933.52	99.33	-99.29	42.22	40°07'08.153"N	104°51'55.135"W	0.15	
5317.00	0.640	35.770	5310.51	97.54	-97.50	43.40	40°07'08.171"N	104°51'55.119"W	0.17	
5694.00	1.050	317.590	5687.48	93.28	-93.24	42.30	40°07'08.213"N	104°51'55.134"W	0.29	
5883.00	1.350	313.010	5876.44	90.48	-90.44	39.50	40°07'08.240"N	104°51'55.170"W	0.17	
5977.00	0.370	233.660	5970.43	89.91	-89.86	38.45	40°07'08.246"N	104°51'55.183"W	1.42	
6261.00	0.850	276.530	6254.41	90.21	-90.17	35.62	40°07'08.243"N	104°51'55.220"W	0.22	
6638.00	0.250	272.530	6631.39	89.85	-89.81	32.02	40°07'08.246"N	104°51'55.266"W	0.16	

Actual Wellpath Report

DUGITE 13C-35HZ AWP

Page 3 of 7

REFERENCE WELLPATH IDENTIFICATION

Operator	KERR-MCGEE OIL & GAS ONSHORE LP	Slot	SLOT#02 DUGITE 13C-35HZ (1020'FSL & 560'FWL, SEC.23)
Area	COLORADO	Well	DUGITE 13C-35HZ
Field	WELD COUNTY (KERR MCGEE)	Wellbore	DUGITE 13C-35HZ AWB
Facility	SEC.23-T2N-R67W		

WELLPATH DATA (174 stations) † = interpolated/extrapolated station

MD [ft]	Inclination [°]	Azimuth [°]	TVD [ft]	Vert Sect [ft]	North [ft]	East [ft]	Latitude	Longitude	DLS [°/100ft]	Comments
6922.00	0.290	236.480	6915.39	90.22	-90.18	30.80	40°07'08.243"N	104°51'55.282"W	0.06	
6969.00	0.530	184.300	6962.39	90.50	-90.47	30.68	40°07'08.240"N	104°51'55.283"W	0.89	
7016.00	5.560	181.600	7009.31	92.99	-92.96	30.61	40°07'08.215"N	104°51'55.284"W	10.70	
7063.00	11.710	180.460	7055.75	100.05	-100.01	30.50	40°07'08.146"N	104°51'55.285"W	13.09	
7111.00	17.510	178.270	7102.18	112.14	-112.11	30.68	40°07'08.026"N	104°51'55.283"W	12.14	
7158.00	22.880	177.620	7146.27	128.35	-128.32	31.28	40°07'07.866"N	104°51'55.275"W	11.44	
7205.00	22.780	175.500	7189.59	146.55	-146.52	32.37	40°07'07.686"N	104°51'55.261"W	1.76	
7252.00	25.780	176.790	7232.43	165.84	-165.80	33.66	40°07'07.496"N	104°51'55.245"W	6.48	
7300.00	31.400	179.320	7274.56	188.78	-188.74	34.39	40°07'07.269"N	104°51'55.235"W	11.97	
7347.00	34.910	178.630	7313.91	214.48	-214.44	34.86	40°07'07.015"N	104°51'55.229"W	7.51	
7394.00	38.410	176.530	7351.60	242.51	-242.47	36.06	40°07'06.738"N	104°51'55.214"W	7.91	
7441.00	41.260	176.300	7387.69	272.55	-272.51	37.95	40°07'06.441"N	104°51'55.190"W	6.07	
7488.00	44.220	175.390	7422.21	304.37	-304.32	40.26	40°07'06.127"N	104°51'55.160"W	6.43	
7535.00	47.970	176.550	7454.79	338.14	-338.10	42.63	40°07'05.793"N	104°51'55.129"W	8.17	
7583.00	52.860	177.680	7485.37	375.08	-375.03	44.48	40°07'05.428"N	104°51'55.105"W	10.35	
7630.00	58.290	178.530	7511.93	413.81	-413.76	45.75	40°07'05.045"N	104°51'55.089"W	11.65	
7677.00	62.950	178.150	7534.98	454.74	-454.69	46.94	40°07'04.641"N	104°51'55.074"W	9.94	
7724.00	67.780	177.700	7554.57	497.42	-497.37	48.49	40°07'04.219"N	104°51'55.054"W	10.31	
7772.00	71.250	178.510	7571.37	542.36	-542.30	49.97	40°07'03.775"N	104°51'55.035"W	7.40	
7819.00	77.580	179.160	7583.99	587.60	-587.54	50.89	40°07'03.328"N	104°51'55.023"W	13.53	
7865.00	83.660	179.950	7591.48	632.96	-632.90	51.24	40°07'02.880"N	104°51'55.018"W	13.33	
7904.00†	88.037	179.342	7594.30	671.85	-671.79	51.48	40°07'02.495"N	104°51'55.015"W	11.33	7" CASING POINT
7919.00	89.720	179.110	7594.60	686.84	-686.79	51.68	40°07'02.347"N	104°51'55.013"W	11.33	
8013.00	90.580	178.760	7594.35	780.83	-780.77	53.43	40°07'01.418"N	104°51'54.990"W	0.99	
8108.00	90.610	179.440	7593.37	875.81	-875.75	54.92	40°07'00.480"N	104°51'54.971"W	0.72	
8202.00	90.270	178.530	7592.64	969.79	-969.73	56.59	40°06'59.551"N	104°51'54.950"W	1.03	
8297.00	90.150	178.650	7592.29	1064.77	-1064.70	58.93	40°06'58.612"N	104°51'54.920"W	0.18	
8391.00	89.900	178.260	7592.25	1158.73	-1158.67	61.46	40°06'57.684"N	104°51'54.887"W	0.49	
8485.00	90.950	178.580	7591.56	1252.70	-1252.63	64.05	40°06'56.755"N	104°51'54.854"W	1.17	
8580.00	89.900	178.360	7590.85	1347.66	-1347.59	66.59	40°06'55.817"N	104°51'54.821"W	1.13	
8674.00	88.980	178.570	7591.77	1441.63	-1441.55	69.11	40°06'54.888"N	104°51'54.789"W	1.00	
8768.00	89.840	178.590	7592.74	1535.59	-1535.52	71.44	40°06'53.960"N	104°51'54.759"W	0.92	
8863.00	89.780	179.640	7593.05	1630.58	-1630.50	72.90	40°06'53.021"N	104°51'54.740"W	1.11	
8957.00	90.240	178.840	7593.04	1724.57	-1724.49	74.15	40°06'52.092"N	104°51'54.724"W	0.98	
9051.00	89.840	178.800	7592.97	1818.56	-1818.47	76.08	40°06'51.164"N	104°51'54.699"W	0.43	
9146.00	90.520	178.110	7592.67	1913.52	-1913.44	78.65	40°06'50.225"N	104°51'54.666"W	1.02	
9240.00	89.590	178.230	7592.58	2007.48	-2007.39	81.65	40°06'49.297"N	104°51'54.627"W	1.00	
9334.00	90.400	178.270	7592.59	2101.43	-2101.35	84.52	40°06'48.368"N	104°51'54.590"W	0.86	
9429.00	88.890	178.770	7593.18	2196.40	-2196.31	86.97	40°06'47.430"N	104°51'54.559"W	1.67	
9523.00	90.000	178.850	7594.09	2290.38	-2290.28	88.92	40°06'46.501"N	104°51'54.533"W	1.18	
9617.00	90.860	179.150	7593.38	2384.36	-2384.26	90.56	40°06'45.572"N	104°51'54.512"W	0.97	
9712.00	89.930	179.810	7592.73	2479.35	-2479.26	91.43	40°06'44.634"N	104°51'54.501"W	1.20	
9806.00	90.670	179.310	7592.24	2573.35	-2573.25	92.15	40°06'43.705"N	104°51'54.492"W	0.95	
9901.00	89.230	179.770	7592.32	2668.34	-2668.25	92.91	40°06'42.766"N	104°51'54.482"W	1.59	
9995.00	90.400	179.690	7592.62	2762.34	-2762.24	93.35	40°06'41.837"N	104°51'54.476"W	1.25	

Actual Wellpath Report

DUGITE 13C-35HZ AWP

Page 4 of 7

REFERENCE WELLPATH IDENTIFICATION

Operator	KERR-MCGEE OIL & GAS ONSHORE LP	Slot	SLOT#02 DUGITE 13C-35HZ (1020'FSL & 560'FWL, SEC.23)
Area	COLORADO	Well	DUGITE 13C-35HZ
Field	WELD COUNTY (KERR MCGEE)	Wellbore	DUGITE 13C-35HZ AWB
Facility	SEC.23-T2N-R67W		

WELLPATH DATA (174 stations)

MD [ft]	Inclination [°]	Azimuth [°]	TVD [ft]	Vert Sect [ft]	North [ft]	East [ft]	Latitude	Longitude	DLS [°/100ft]	Comments
10089.00	89.500	180.760	7592.71	2856.34	-2856.24	92.99	40°06'40.908"N	104°51'54.481"W	1.49	
10184.00	90.210	180.740	7592.95	2951.33	-2951.23	91.74	40°06'39.970"N	104°51'54.497"W	0.75	
10278.00	89.380	180.680	7593.28	3045.32	-3045.22	90.58	40°06'39.041"N	104°51'54.512"W	0.89	
10373.00	90.000	180.850	7593.80	3140.31	-3140.21	89.31	40°06'38.102"N	104°51'54.529"W	0.68	
10467.00	89.930	180.510	7593.85	3234.30	-3234.20	88.19	40°06'37.173"N	104°51'54.543"W	0.37	
10561.00	90.520	180.350	7593.49	3328.29	-3328.20	87.49	40°06'36.244"N	104°51'54.552"W	0.65	
10653.00	90.580	179.380	7592.60	3420.29	-3420.20	87.70	40°06'35.335"N	104°51'54.549"W	1.06	
10747.00	89.290	178.650	7592.71	3514.27	-3514.18	89.32	40°06'34.406"N	104°51'54.528"W	1.58	
10840.00	88.730	177.960	7594.32	3607.22	-3607.12	92.07	40°06'33.488"N	104°51'54.493"W	0.96	
10933.00	89.780	177.900	7595.52	3700.15	-3700.05	95.43	40°06'32.570"N	104°51'54.450"W	1.13	
11026.00	88.430	177.560	7596.98	3793.07	-3792.97	99.11	40°06'31.651"N	104°51'54.402"W	1.50	
11118.00	89.780	177.670	7598.41	3884.98	-3884.87	102.94	40°06'30.743"N	104°51'54.353"W	1.47	
11211.00	90.770	177.790	7597.97	3977.91	-3977.80	106.62	40°06'29.825"N	104°51'54.306"W	1.07	
11305.00	89.290	178.240	7597.92	4071.85	-4071.74	109.88	40°06'28.897"N	104°51'54.264"W	1.65	
11397.00	90.210	177.760	7598.32	4163.80	-4163.68	113.09	40°06'27.988"N	104°51'54.223"W	1.13	
11490.00	88.850	178.950	7599.08	4256.76	-4256.64	115.76	40°06'27.069"N	104°51'54.188"W	1.94	
11584.00	90.000	178.940	7600.03	4350.74	-4350.61	117.49	40°06'26.141"N	104°51'54.166"W	1.22	
11677.00	89.750	180.040	7600.23	4443.73	-4443.61	118.32	40°06'25.222"N	104°51'54.155"W	1.21	
11770.00	90.430	180.620	7600.08	4536.73	-4536.61	117.78	40°06'24.303"N	104°51'54.162"W	0.96	
11863.00	91.840	180.530	7598.24	4629.70	-4629.58	116.85	40°06'23.384"N	104°51'54.174"W	1.52	
11956.00	90.300	180.230	7596.50	4722.68	-4722.56	116.23	40°06'22.465"N	104°51'54.182"W	1.69	
12049.00	88.730	180.960	7597.29	4815.67	-4815.55	115.27	40°06'21.546"N	104°51'54.195"W	1.86	
12143.00	90.030	180.840	7598.31	4909.65	-4909.53	113.79	40°06'20.617"N	104°51'54.214"W	1.39	
12236.00	88.950	181.350	7599.14	5002.62	-5002.51	112.01	40°06'19.699"N	104°51'54.236"W	1.28	
12330.00	90.270	181.540	7599.78	5096.59	-5096.47	109.64	40°06'18.770"N	104°51'54.267"W	1.42	
12423.00	89.410	181.420	7600.04	5189.55	-5189.44	107.24	40°06'17.851"N	104°51'54.298"W	0.93	
12517.00	90.060	180.600	7600.47	5283.53	-5283.42	105.58	40°06'16.923"N	104°51'54.319"W	1.11	
12612.00	89.130	180.250	7601.14	5378.53	-5378.42	104.88	40°06'15.984"N	104°51'54.328"W	1.05	
12706.00	90.430	180.380	7601.50	5472.52	-5472.41	104.36	40°06'15.055"N	104°51'54.335"W	1.39	
12801.00	91.690	180.440	7599.75	5567.50	-5567.39	103.68	40°06'14.116"N	104°51'54.344"W	1.33	
12895.00	89.870	180.810	7598.47	5661.48	-5661.37	102.66	40°06'13.188"N	104°51'54.357"W	1.98	
12989.00	89.350	179.430	7599.11	5755.47	-5755.37	102.46	40°06'12.259"N	104°51'54.359"W	1.57	
13083.00	87.650	180.180	7601.57	5849.44	-5849.33	102.78	40°06'11.330"N	104°51'54.355"W	1.98	
13178.00	88.330	180.230	7604.90	5944.38	-5944.27	102.44	40°06'10.392"N	104°51'54.360"W	0.72	
13272.00	89.440	180.380	7606.73	6038.36	-6038.25	101.94	40°06'09.463"N	104°51'54.366"W	1.19	
13366.00	90.520	180.330	7606.76	6132.35	-6132.25	101.36	40°06'08.534"N	104°51'54.374"W	1.15	
13461.00	91.410	179.700	7605.16	6227.34	-6227.23	101.33	40°06'07.596"N	104°51'54.374"W	1.15	
13555.00	88.760	179.800	7605.02	6321.33	-6321.22	101.74	40°06'06.667"N	104°51'54.369"W	2.82	
13649.00	87.930	180.290	7607.74	6415.29	-6415.18	101.67	40°06'05.738"N	104°51'54.370"W	1.03	
13744.00	89.900	180.370	7609.53	6510.26	-6510.16	101.12	40°06'04.800"N	104°51'54.377"W	2.08	
13839.00	90.640	180.100	7609.09	6605.26	-6605.16	100.73	40°06'03.861"N	104°51'54.382"W	0.83	
13933.00	91.200	180.040	7607.58	6699.25	-6699.14	100.62	40°06'02.932"N	104°51'54.383"W	0.60	
14027.00	90.460	180.880	7606.22	6793.23	-6793.13	99.86	40°06'02.003"N	104°51'54.393"W	1.19	
14121.00	90.430	182.280	7605.49	6887.19	-6887.09	97.27	40°06'01.075"N	104°51'54.426"W	1.49	
14216.00	89.100	181.920	7605.88	6982.12	-6982.02	93.79	40°06'00.137"N	104°51'54.471"W	1.45	

REFERENCE WELLPATH IDENTIFICATION

Operator	KERR-MCGEE OIL & GAS ONSHORE LP	Slot	SLOT#02 DUGITE 13C-35HZ (1020'FSL & 560'FWL, SEC.23)
Area	COLORADO	Well	DUGITE 13C-35HZ
Field	WELD COUNTY (KERR MCGEE)	Wellbore	DUGITE 13C-35HZ AWB
Facility	SEC.23-T2N-R67W		

WELLPATH DATA (174 stations)

MD [ft]	Inclination [°]	Azimuth [°]	TVD [ft]	Vert Sect [ft]	North [ft]	East [ft]	Latitude	Longitude	DLS [°/100ft]	Comments
14310.00	91.630	182.660	7605.28	7076.03	-7075.94	90.04	40°05'59.209"N	104°51'54.519"W	2.80	
14404.00	89.530	182.330	7604.33	7169.93	-7169.84	85.94	40°05'58.281"N	104°51'54.572"W	2.26	
14499.00	89.440	181.790	7605.18	7264.86	-7264.77	82.53	40°05'57.343"N	104°51'54.616"W	0.58	
14593.00	90.090	179.710	7605.57	7358.84	-7358.76	81.30	40°05'56.414"N	104°51'54.632"W	2.32	
14687.00	89.190	178.880	7606.16	7452.83	-7452.75	82.46	40°05'55.485"N	104°51'54.617"W	1.30	
14781.00	89.470	179.520	7607.25	7546.82	-7546.73	83.77	40°05'54.556"N	104°51'54.600"W	0.74	
14875.00	90.270	179.360	7607.47	7640.81	-7640.73	84.69	40°05'53.627"N	104°51'54.588"W	0.87	
14970.00	90.670	181.080	7606.69	7735.80	-7735.72	84.32	40°05'52.689"N	104°51'54.593"W	1.86	
15064.00	88.270	181.490	7607.56	7829.77	-7829.68	82.21	40°05'51.760"N	104°51'54.620"W	2.59	
15159.00	87.280	181.670	7611.25	7924.65	-7924.57	79.60	40°05'50.822"N	104°51'54.654"W	1.06	
15253.00	88.670	181.720	7614.57	8018.55	-8018.47	76.82	40°05'49.894"N	104°51'54.690"W	1.48	
15348.00	90.060	180.710	7615.62	8113.52	-8113.44	74.80	40°05'48.956"N	104°51'54.715"W	1.81	
15442.00	89.930	182.740	7615.63	8207.47	-8207.39	71.98	40°05'48.027"N	104°51'54.752"W	2.16	
15536.00	89.750	183.110	7615.89	8301.34	-8301.27	67.18	40°05'47.100"N	104°51'54.814"W	0.44	
15631.00	88.180	183.560	7617.61	8396.15	-8396.09	61.65	40°05'46.163"N	104°51'54.885"W	1.72	
15725.00	88.490	183.860	7620.34	8489.91	-8489.85	55.57	40°05'45.236"N	104°51'54.963"W	0.46	
15820.00	86.570	182.310	7624.43	8584.67	-8584.62	50.47	40°05'44.300"N	104°51'55.029"W	2.60	
15916.00	87.870	181.280	7629.09	8680.50	-8680.46	47.46	40°05'43.353"N	104°51'55.067"W	1.73	
16010.00	88.150	181.030	7632.35	8774.43	-8774.38	45.57	40°05'42.424"N	104°51'55.092"W	0.40	
16104.00	90.550	180.110	7633.42	8868.41	-8868.36	44.63	40°05'41.496"N	104°51'55.104"W	2.73	
16198.00	89.350	181.490	7633.50	8962.39	-8962.35	43.32	40°05'40.567"N	104°51'55.121"W	1.95	
16293.00	88.760	181.200	7635.07	9057.35	-9057.31	41.09	40°05'39.628"N	104°51'55.149"W	0.69	
16388.00	89.780	181.250	7636.28	9152.32	-9152.28	39.06	40°05'38.690"N	104°51'55.175"W	1.07	
16483.00	90.240	180.450	7636.26	9247.30	-9247.27	37.65	40°05'37.751"N	104°51'55.194"W	0.97	
16578.00	89.930	180.070	7636.12	9342.30	-9342.27	37.22	40°05'36.812"N	104°51'55.199"W	0.52	
16673.00	90.460	180.240	7635.80	9437.30	-9437.27	36.96	40°05'35.874"N	104°51'55.202"W	0.59	
16767.00	90.520	180.470	7634.99	9531.29	-9531.26	36.38	40°05'34.945"N	104°51'55.210"W	0.25	
16860.00	90.180	180.520	7634.43	9624.29	-9624.25	35.58	40°05'34.026"N	104°51'55.220"W	0.37	
16954.00	89.840	180.450	7634.41	9718.28	-9718.25	34.78	40°05'33.097"N	104°51'55.230"W	0.37	
17048.00	90.210	180.770	7634.37	9812.28	-9812.25	33.78	40°05'32.168"N	104°51'55.243"W	0.52	
17143.00	90.580	181.530	7633.71	9907.25	-9907.22	31.87	40°05'31.229"N	104°51'55.268"W	0.89	
17239.00	90.740	181.900	7632.61	10003.20	-10003.17	29.00	40°05'30.281"N	104°51'55.305"W	0.42	
17333.00	91.170	182.130	7631.04	10097.12	-10097.10	25.70	40°05'29.353"N	104°51'55.347"W	0.52	
17427.00	88.310	182.120	7631.47	10191.04	-10191.03	22.21	40°05'28.425"N	104°51'55.392"W	3.04	
17522.00	88.920	180.870	7633.76	10285.98	-10285.96	19.73	40°05'27.487"N	104°51'55.424"W	1.46	
17616.00	89.040	181.450	7635.44	10379.94	-10379.93	17.83	40°05'26.558"N	104°51'55.449"W	0.63	
17710.00	89.630	181.590	7636.53	10473.90	-10473.89	15.34	40°05'25.630"N	104°51'55.481"W	0.65	
17809.00	89.200	181.440	7637.54	10572.86	-10572.85	12.72	40°05'24.652"N	104°51'55.514"W	0.46	LAST BHI MWD+IFR SURVEY
17863.00	89.200	181.440	7638.29	10626.83	-10626.83	11.36	40°05'24.118"N	104°51'55.532"W	0.00	PROJECTION TO BIT

Actual Wellpath Report

DUGITE 13C-35HZ AWP

Page 6 of 7

REFERENCE WELLPATH IDENTIFICATION

Operator	KERR-MCGEE OIL & GAS ONSHORE LP	Slot	SLOT#02 DUGITE 13C-35HZ (1020'FSL & 560'FWL, SEC.23)
Area	COLORADO	Well	DUGITE 13C-35HZ
Field	WELD COUNTY (KERR MCGEE)	Wellbore	DUGITE 13C-35HZ AWB
Facility	SEC.23-T2N-R67W		

HOLE & CASING SECTIONS - Ref Wellbore: DUGITE 13C-35HZ AWB Ref Wellpath: DUGITE 13C-35HZ AWP

String/Diameter	Start MD [ft]	End MD [ft]	Interval [ft]	Start TVD [ft]	End TVD [ft]	Start N/S [ft]	Start E/W [ft]	End N/S [ft]	End E/W [ft]
13.5in Open Hole	25.00	1346.00	1321.00	25.00	1345.97	0.00	0.00	5.54	0.25
9.625in Casing Surface	25.00	1336.00	1311.00	25.00	1335.97	0.00	0.00	5.54	0.23
8.75in Open Hole	1346.00	7914.00	6568.00	1345.97	7594.55	5.54	0.25	-681.79	51.61
7in Casing Intermediate	25.00	7904.00	7879.00	25.00	7594.30	0.00	0.00	-671.79	51.48
6.125in Open Hole	7914.00	17863.00	9949.00	7594.55	7638.29	-681.79	51.61	-10626.83	11.36

WELLPATH COMPOSITION - Ref Wellbore: DUGITE 13C-35HZ AWB Ref Wellpath: DUGITE 13C-35HZ AWP

Start MD [ft]	End MD [ft]	Positional Uncertainty Model	Log Name/Comment	Wellbore
25.00	1255.00	Generic gyro - continuous (Standard)	MS GYRO SURVEYS FROM ANADARKO <125-1255>	DUGITE 13C-35HZ AWB
1255.00	7865.00	NaviTrak (MAGCORR,IFR)	BHI NAVITRAK MWD+IFR 8 3/4 <1376-7865>	DUGITE 13C-35HZ AWB
7865.00	17809.00	NaviTrak (MAGCORR,IFR)	BHI NAVITRAK MWD+IFR 6 1/8" <7919-17809>	DUGITE 13C-35HZ AWB
17809.00	17863.00	Blind Drilling (std)	Projection to bit	DUGITE 13C-35HZ AWB

Actual Wellpath Report

DUGITE 13C-35HZ AWP

Page 7 of 7

REFERENCE WELLPATH IDENTIFICATION

Operator	KERR-MCGEE OIL & GAS ONSHORE LP	Slot	SLOT#02 DUGITE 13C-35HZ (1020'FSL & 560'FWL, SEC.23)
Area	COLORADO	Well	DUGITE 13C-35HZ
Field	WELD COUNTY (KERR MCGEE)	Wellbore	DUGITE 13C-35HZ AWB
Facility	SEC.23-T2N-R67W		

WELLPATH COMMENTS

MD [ft]	Inclination [°]	Azimuth [°]	TVD [ft]	Comment
25.00	0.000	292.030	25.00	TIE ON
125.00	0.450	292.030	125.00	BEGIN GYRO SURVEYS
1255.00	0.290	149.000	1254.97	TIE ONTO GYRO SURVEYS
1376.00	0.190	18.780	1375.97	BEGIN BHI MWD+IFR SURVEYS
7904.00	88.037	179.342	7594.30	7" CASING POINT
17809.00	89.200	181.440	7637.54	LAST BHI MWD+IFR SURVEY
17863.00	89.200	181.440	7638.29	PROJECTION TO BIT