

WPX ENERGY ROCKY MOUNTAIN LLC-EBUS

NER 343-32

Nabors 576

Post Job Summary

Cement Surface Casing

Date Prepared: 06/30/2014
Job Date: 06/20/2014

Submitted by: Kory Hugentobler – Grand Junction Cement Engineer

The Road to Excellence Starts with Safety

Sold To #: 300721	Ship To #: 3123460	Quote #:	Sales Order #: 0901376518
Customer: WPX ENERGY ROCKY MOUNTAIN LLC-EBUS		Customer Rep: Rick OAKS	
Well Name: FEDERAL	Well #: NER 343-32	API/UWI #: 05-045-21791-00	
Field: RULISON	City (SAP): RIFLE	County/Parish: GARFIELD	State: COLORADO
Legal Description: 5-7S-93W-139FNL-2589FWL			
Contractor: NABORS DRLG		Rig/Platform Name/Num: NABORS 576	
Job BOM: 7521			
Well Type: DIRECTIONAL GAS			
Sales Person: HALAMERICA\HB50180		Srvc Supervisor: Carlton Kukus	
Job			

Formation Name			
Formation Depth (MD)	Top		Bottom
Form Type			BHST
Job depth MD	1190ft		Job Depth TVD
Water Depth			Wk Ht Above Floor
Perforation Depth (MD)	From		To

Well Data										
Description	New / Used	Size in	ID in	Weight lbm/ft	Thread	Grade	Top MD ft	Bottom MD ft	Top TVD ft	Bottom TVD ft
Casing	New	9.625	9.001	32.3	8 RD	H-40	0	1144	0	1144
Open Hole Section			13.5				0	1190	0	1190

Tools and Accessories									
Type	Size in	Qty	Make	Depth ft		Type	Size in	Qty	Make
Guide Shoe	9.625	1		1144		Top Plug	9.625	1	HES
Float Shoe	9.625	1				Bottom Plug	9.625		HES
Float Collar	9.625	1				SSR plug set	9.625		HES
Insert Float	9.625	1				Plug Container	9.625	1	HES
Stage Tool	9.625	1				Centralizers	9.625		HES

Miscellaneous Materials										
Gelling Agt		Conc		Surfactant		Conc		Acid Type		Qty
Treatment Fld		Conc		Inhibitor		Conc		Sand Type		Size

Fluid Data										
Stage/Plug #: 1										
Fluid #	Stage Type	Fluid Name	Qty	Qty UoM	Mixing Density lbm/gal	Yield ft3/sack	Mix Fluid Gal	Rate bbl/min	Total Mix Fluid Gal	
1	Fresh Water	Fresh Water	20	bbl	8.34			4		
Fluid #	Stage Type	Fluid Name	Qty	Qty UoM	Mixing Density lbm/gal	Yield ft3/sack	Mix Fluid Gal	Rate bbl/min	Total Mix Fluid Gal	
2	Lead Cement	VARICEM (TM) CEMENT	140	sack	12.3	2.38		8	13.77	
CAL-SEAL 60, BULK (100064022)										

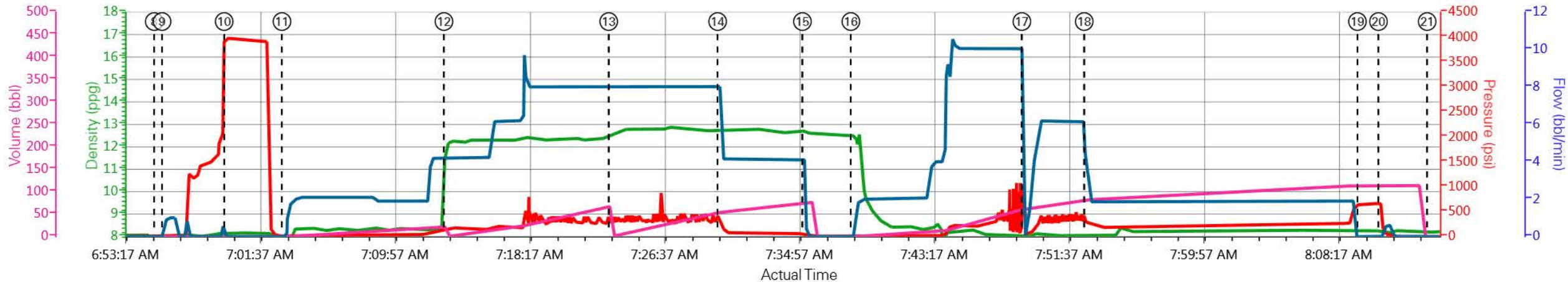
		SALT, BULK (100003695)							
		POLY-E-FLAKE (101216940)							
		VERSASET, 55 LB SK (101376573)							
		ECONOLITE (100001580)							
13.72 Gal		FRESH WATER							
		D-AIR 5000, 50 LB SACK (102068797)							
94 lbm		TYPE I / II CEMENT, BULK (101439798)							
Fluid #	Stage Type	Fluid Name	Qty	Qty UoM	Mixing Density lbm/gal	Yield ft3/sack	Mix Fluid Gal	Rate bbl/mi n	Total Mix Fluid Gal
3	Tail Cement	VARICEM (TM) CEMENT	160	sack	12.8	2.11		8	11.77
11.71 Gal		FRESH WATER							
Fluid #	Stage Type	Fluid Name	Qty	Qty UoM	Mixing Density lbm/gal	Yield ft3/sack	Mix Fluid Gal	Rate bbl/mi n	Total Mix Fluid Gal
4	Displacement	Displacement	88.7	bbl	8.34			10	
Cement Left In Pipe		Amount	44 ft		Reason		Shoe Joint		
Comment 20 BBLs OF CEMENT TO SURFACE									

1.1 Job Event Log

Type	Seq. No.	Graph Label/Activity	Date	Time	Source	DH Density (ppg)	PS Pump Press (psi)	Pump Stg Tot (bbl)	Comb Pump Rate (bbl/min)	Comment
Event	1	Call Out	6/19/2014	18:00:00	USER					HES CREW WAS CALLED OUT AND ROLLED FROM ANOTHER JOB 18:00
Event	2	Pre-Convoy Safety Meeting	6/19/2014	20:30:00	USER					ALL HES CREW, 1-F-550 PICKUP, 1-ELITE PUMP TRUCK, 1-660 BULK TRUCK
Event	3	Arrive At Loc	6/19/2014	23:00:00	USER					HES ARRIVED 2 HOURS EARLY, RIG WAS STILL PULLING DRILL PIPE
Event	4	Assessment Of Location Safety Meeting	6/19/2014	23:30:00	USER					RIG WAS STILL PULLING DRILL PIPE, HES WAITED TO SPOT EQUIPMENT AND RIG UP DUE TO CASING RACKS IN THE WAY
Event	5	Pre-Rig Up Safety Meeting	6/20/2014	06:00:00	USER					ALL HES CREW
Event	6	Rig-Up Equipment	6/20/2014	06:10:00	USER					RIG UP ALL EQUIPMENT, IRON TO THE STAND PIPE, BULK HOSE TO PUMP TRUCK AND WATER HOSES TO THE UPRIGHT AND DAY TANK
Event	7	Pre-Job Safety Meeting	6/20/2014	06:30:00	USER	8.16	-1.00	0.0	0.00	ALL OF HES CREW AND RIG CREW PRESENT TO DISCUSS JOB PROCEDURES
Event	8	Start Job	6/20/2014	06:55:12	COM5	8.04	-3.00	0.0	0.00	TD: 1190FT TP: 1144FT SJ: 44.10FT OH: 13.5 CSG: 9.625 32.3# H-40 MUD WT: 9.8# VISC:60
Event	9	Fill Lines	6/20/2014	06:55:41	USER	8.01	23.00	0.0	0.80	FILL LINES TO PRESSURE TEST
Event	10	Test Lines	6/20/2014	06:59:32	COM5	8.15	3981.00	0.8	0.00	TEST LINES TO 3000 PSI, PRESSURE TEST OK
Event	11	Fresh Water Spacer	6/20/2014	07:03:06	COM5	8.34	100	20	4	20 BBL FRESH WATER SPACER
Event	12	Pump Lead Cement	6/20/2014	07:13:07	COM5	12.3	386	67	8	140SKS VARICEM CEMENT 12.3PPG 2.38YIELD 13.77GAL/SK WEIGHT OF CEMENT VERIFIED VIA MUD SCALES THROUGHOUT LEAD CEMENT
Event	13	Pump Tail Cement	6/20/2014	07:23:18	COM5	12.8	425	54	8	160SKS VARICEM CEMENT 12.8PPG 2.11YIELD 11.77GAL/SK WEIGHT OF CEMENT VERIFIED VIA MUD SCALES THROUGHOUT TAIL CEMENT
Event	14	Slow Rate	6/20/2014	07:30:02	USER	12.8	58	12	4	SLOW RATE TO END ON CEMENT
Event	15	Shutdown	6/20/2014	07:35:16	USER	12.69	57.00	66	0	SHUTDOWN END OF CEMENT
Event	16	Pump Displacement	6/20/2014	07:38:16	COM5	8.34	326	40	10	FRESH WATER DISPLACEMENT
Event	17	Shutdown	6/20/2014	07:48:50	USER	8.07	1700	40	0.00	HES HIT KICKOUTS, HES RESET KICKOUT AND CAME BACK ONLINE
Event	18	Slow Rate	6/20/2014	07:52:42	USER	8.11	400	78	2	SLOW RATE TO BUMP PLUG
Event	19	Bump Plug	6/20/2014	08:09:35	COM5	8.36	655.00	88.7	0.00	BUMPED PLUG AT 280 PSI, TOOK TO 700 PSI
Event	20	Check Floats	6/20/2014	08:10:53	USER	8.28	528.00	113.4	0.00	FLOATS HELD 1 BBL BACK TO TANKS
Event	21	End Job	6/20/2014	08:13:54	COM5	8.24	-2.00	0.0	0.00	THANK YOU FOR CHOOSING HALLIBURTON CEMENT CARL KUKUS AND

						CREW
Event	22	Pre-Rig Down Safety Meeting	6/20/2014	08:20:00	USER	ALL HES EMPLOYEES
Event	23	Rig Down Lines	6/20/2014	08:25:00	USER	RIG DOWN ALL EQUIPMENT
Event	24	Pre-Convoy Safety Meeting	6/20/2014	09:15:00	USER	ALL HES EMPLOYEES
Event	25	Crew Leave Location	6/20/2014	09:30:00	USER	1-F-550 PICKUP, 1-ELITE PUMP TRUCK, 1-660 BULK TRUCK

WPX/FEDERAL NER 343-32/901376518



DH Density (ppg) PS Pump Press (psi) Pump Stg Tot (bbl) Comb Pump Rate (bbl/min)

- | | | |
|---|--------------------------------------|--|
| ① Call Out n/a;n/a;n/a;n/a | ⑩ Test Lines 8.16;3982;0.8;0 | ⑰ Bump Plug 8.36;656;113.4;0 |
| ② Pre-Convoy Safety Meeting n/a;n/a;n/a;n/a | ⑪ Fresh Water Spacer 8.02;11;0;0 | 20 Check Floats 8.28;528;113.4;0 |
| ③ Arrive At Loc n/a;n/a;n/a;n/a | ⑫ Pump Lead Cement 12.12;146;0.1;4.2 | 21 End Job 8.23;-2;0;0 |
| ④ Assessment Of Location Safety Meeting n/a;n/a;n/a;n/a | ⑬ Pump Tail Cement 12.61;380;0.2;8 | 22 Pre-Rig Down Safety Meeting n/a;n/a;n/a;n/a |
| ⑤ Pre-Rig Up Safety Meeting n/a;n/a;n/a;n/a | ⑭ Slow Rate 12.77;405;54.3;8.1 | 23 Rig Down Lines n/a;n/a;n/a;n/a |
| ⑥ Rig-Up Equipment n/a;n/a;n/a;n/a | ⑮ Shutdown 12.69;57;76.4.1 | 24 Pre-Convoy Safety Meeting n/a;n/a;n/a;n/a |
| ⑦ Pre-Job Safety Meeting 8.16;-1;0;0 | ⑯ Pump Displacement 12.51;0;0;0 | 25 Crew Leave Location n/a;n/a;n/a;n/a |
| ⑧ Start Job 8.04;-3;0;0 | ⑰ Shutdown 8.07;46;61.3;0 | |
| ⑨ Fill Lines 8.01;23;0;0.8 | ⑱ Slow Rate 8.1;276;81.8;3.9 | |

HALLIBURTON | iCem® Service

Created: 2014-06-20 04:16:19, Version: 3.0.121

Edit

Customer: WPX ENERGY ROCKY MOUNTAIN LLC-EBUS

Job Date: 6/20/2014 6:26:31 AM

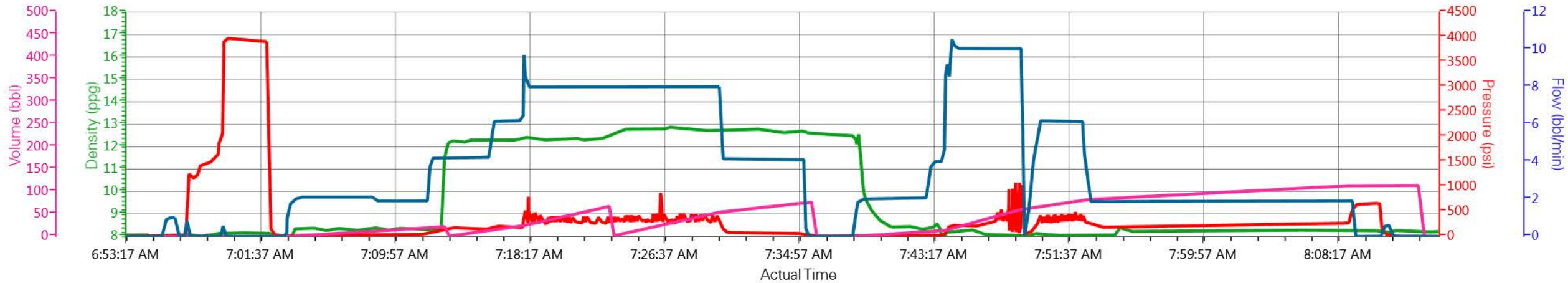
Well: NER 343-32

Representative: Rick Oaks

Sales Order #: 901376518

Supervisor/Operator: Carlton Kukus/Andrew Schanz E-2

WPX/FEDERAL NER 343-32/901376518



DH Density (ppg) PS Pump Press (psi) Pump Stg Tot (bbl) Comb Pump Rate (bbl/min)