

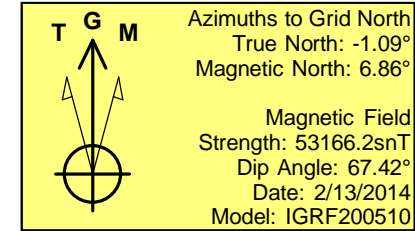
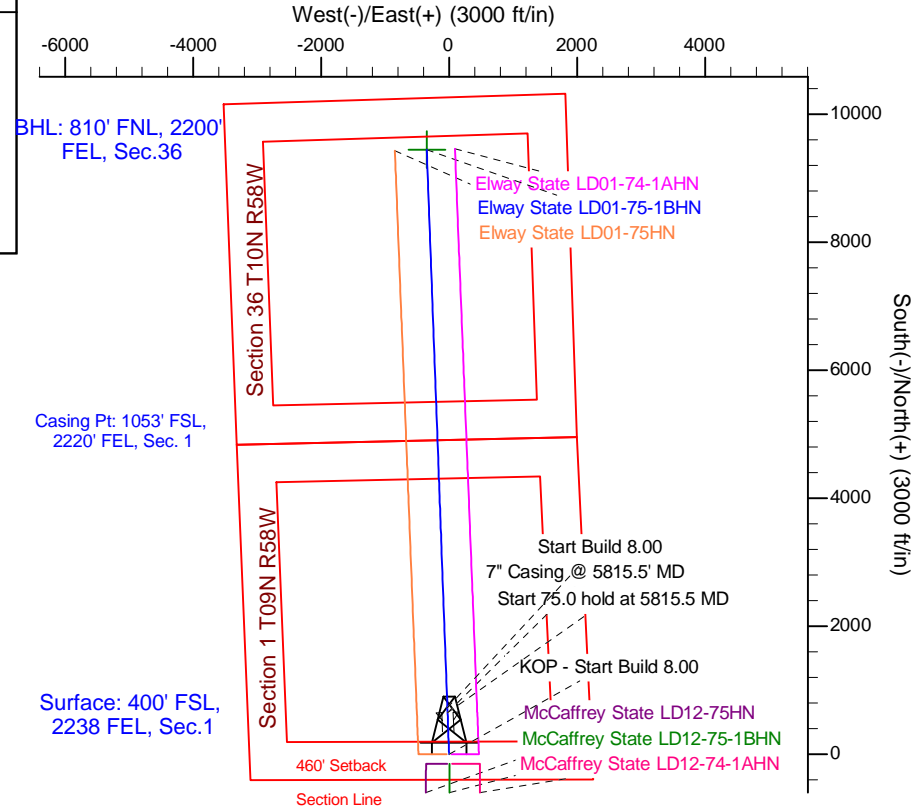
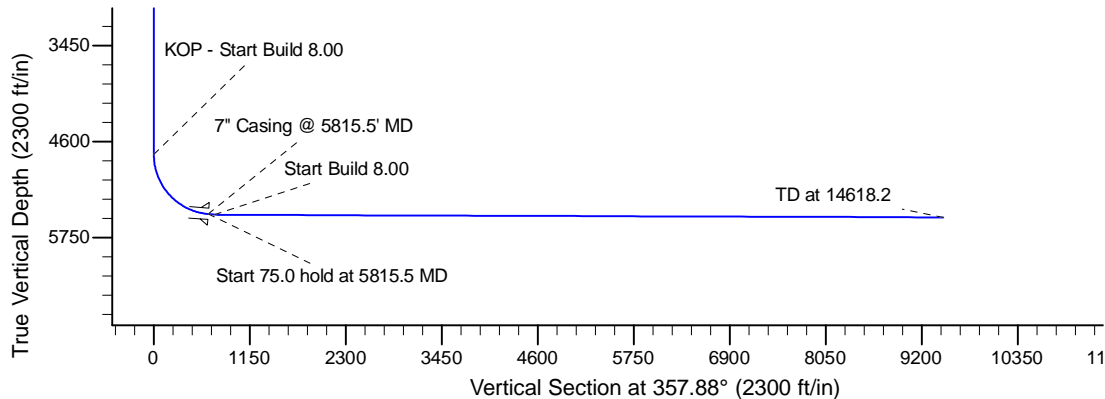
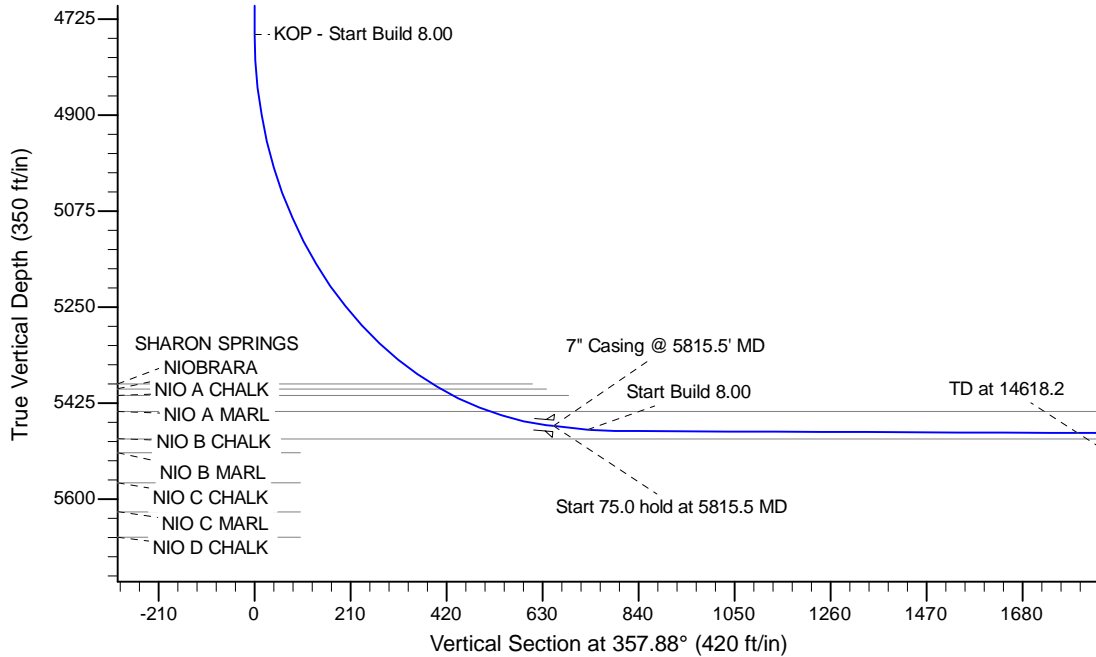
Project: Wattenberg Field
 Site: LD (Sec.1-T09N-R58W) Weld County, CO
 Well: Elway State LD01-75-1BHN
 Wellbore: Original Drilling
 Design: APD - Rev 1

Northern Region Drilling - Working

Geodetic System: US State Plane 1983
 Datum: North American Datum 1983
 Ellipsoid: GRS 1980
 Zone: Colorado Northern Zone
 System Datum: Mean Sea Level

SECTION DETAILS

Sec	MD	Inc	Azi	TVD	+N/-S	+E/-W	Dleg	TFace	VSec	Target
1	0.0	0.00	0.00	0.0	0.0	0.0	0.00	0.00	0.0	
2	4753.0	0.00	0.00	4753.0	0.0	0.0	0.00	0.00	0.0	
3	5815.5	85.00	357.88	5466.5	653.3	-24.1	8.00	357.88	653.8	
4	5890.5	85.00	357.88	5473.0	728.0	-26.9	0.00	0.00	728.5	
5	5950.5	89.80	357.88	5475.7	787.9	-29.1	8.00	0.00	788.4	
6	14618.2	89.80	357.88	5506.0	9449.6	-349.0	0.00	0.00	9456.1	Elway State LD01-75-1BHN BHL 810'FNL, 2200'FEL



WELL DETAILS: Elway State LD01-75-1BHN

Ground Level:4633.0					
		Northing	Easting	Latitude	Longitude
0.0	0.0	1529385.06	3467941.70	40.774310	-103.810410

Plan: APD - Rev 1 (Elway State LD01-75-1BHN/Original Drilling)

Created By: Shailey Jewell Date: 9:21, August 11 2014

OK to submit with 2A as per Noble Drilling
 8/11/2014 10:08