



Wellbore Schematic  
Well Name: RAZOR 27J-2210B

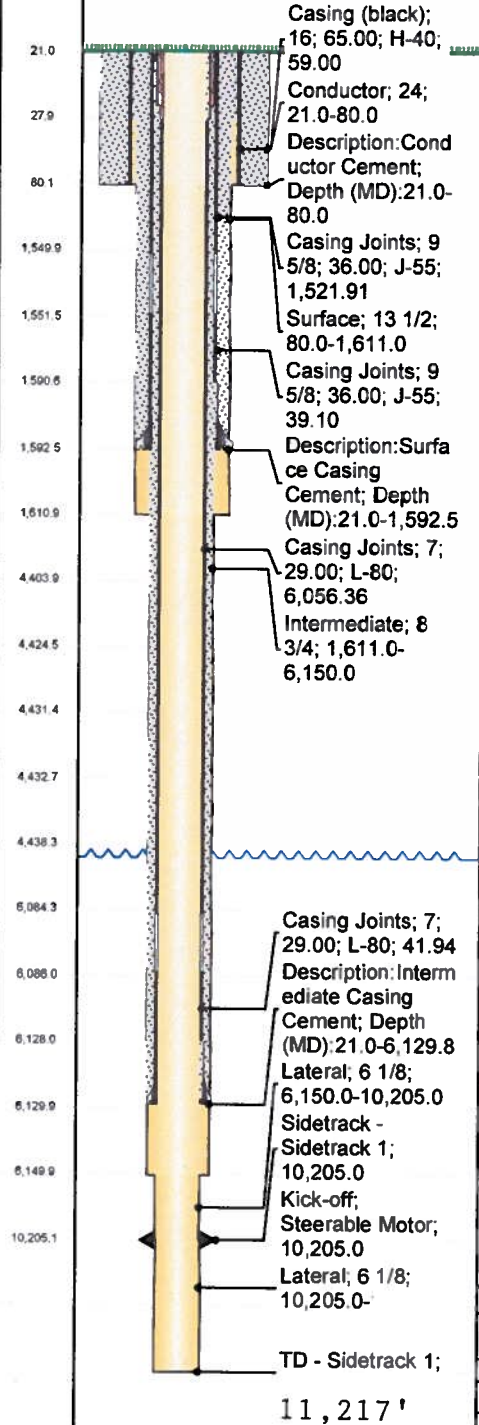
Well Information

API Number 051233806500		WPC ID 1CO076898		Field Name Wildcat		KB-Grd (ft) 21.00	Original Spud Date 9/5/2014	
Lot	Quarter 1 NW	Quarter 2 SE	Quarter 3	Quarter 4	Section 27	Township 10 N	Range 58 W	County Weld
Section		Township		Block		Survey		Abstract

Lateral/Horizontal - Sidetrack 1, 9/15/2014 7:4...

Contractor Frontier	Rig Number 26
------------------------	------------------

Wellbore Sections	
Section Des	Start Date
Lateral	9/13/2014
Size (in)	Act Top (ftKB)
6 1/8	10,205.0
Act Btm (ftKB)	11,675.0



Casing	
Conductor Pipe, 80.0ftKB	
Run Date 2/17/2014	Comment
OD (in)	Wt (lb/ft)
16	65.00
Grade	Top (ftKB)
H-40	21.0
Btm (ftKB)	Len (ft)
80.0	59.00
Item Des	Top Thread
Casing (black)	LT&C
Btm Thread	LT&C

Surface Csg, 1,592.5ftKB	
Run Date 9/6/2014	Comment 12 Centralizers / 1 Cement basket
OD (in)	Wt (lb/ft)
9 5/8	36.00
Grade	Top (ftKB)
J-55	21.0
Btm (ftKB)	Len (ft)
21.0	21.0
Item Des	Top Thread
Landing Joint	LT&C
Btm Thread	LT&C
9 5/8	36.00
J-55	21.0
28.0	7.00
Well head	LT&C
9 5/8	36.00
J-55	28.0
1,549.9	1,521.9
Casing Joints	LT&C
9 5/8	36.00
J-55	1,549.9
1,551.4	1.50
Float Collar	LT&C
9 5/8	36.00
J-55	1,551.4
1,590.5	39.10
Casing Joints	LT&C
9 5/8	36.00
J-55	1,590.5
1,592.5	2.00
Float Shoe	LT&C

Intermediate Csg, 6,129.8ftKB	
Run Date 9/9/2014	Comment 15 Turbulizers / 22 bowsprings
OD (in)	Wt (lb/ft)
7	29.00
Grade	Top (ftKB)
L-80	21.0
Btm (ftKB)	Len (ft)
21.0	21.0
Item Des	Top Thread
Landing Joint	LT&C
Btm Thread	LT&C
7	29.00
L-80	21.0
28.0	7.00
Casing Hanger	LT&C
7	29.00
L-80	28.0
6,084.4	6,056.3
Casing Joints	LT&C
7	29.00
L-80	6,084.4
6,085.9	1.50
Float Collar	LT&C
7	29.00
L-80	6,085.9
6,127.8	41.94
Casing Joints	LT&C
7	29.00
L-80	6,127.8
6,129.8	2.00
Float Shoe	LT&C

Liner, 13,772.0ftKB	
Run Date	Comment 100 Stand off bands
OD (in)	Wt (lb/ft)
4 1/2	11.60
Grade	Top (ftKB)
L-80	4,403.8
Btm (ftKB)	Len (ft)
4,424.6	20.79
Item Des	Top Thread
ZXP Liner Top	LT&C
Btm Thread	LT&C
4 1/2	11.60
L-80	4,424.6
4,431.3	6.67
Liner Hanger	LT&C
4 1/2	11.60
L-80	4,431.3
4,432.8	1.49
Combo Collar	LT&C
4 1/2	11.60
L-80	4,432.8
4,438.3	5.50
Pup Joint	LT&C
4 1/2	11.60
L-80	4,438.3
13,668.9	9,230.5
Casing Joints	LT&C
4 1/2	11.60
L-80	13,668.9
13,674.3	5.48
Pup Joint	LT&C
4 1/2	11.60
L-80	13,674.3
13,678.1	3.75
Alpha Sleeve	LT&C
4 1/2	11.60
L-80	13,678.1
13,680.2	2.11
Pup Joint	LT&C
4 1/2	11.60
L-80	13,680.2
13,723.5	43.26
Casing Joints	LT&C
4 1/2	11.60
L-80	13,723.5
13,725.0	1.58
Landing Collar	LT&C
4 1/2	11.60
L-80	13,725.0
13,726.1	1.07
Float Collar	LT&C
4 1/2	11.60
L-80	13,726.1
13,769.5	43.36
Casing Joints	LT&C
4 1/2	11.60
L-80	13,769.5
13,772.0	2.53
Float Shoe	LT&C

Cement	
Description Conductor Cement	Cementing Start Date 2/17/2014
Fluid	Est Top (ftKB)
Lead Cement	21.0
Est Btm (ftKB)	80.0
Amount (sacks)	Class
Ready Mix	
Description Surface Casing Cement	Cementing Start Date 9/6/2014
Fluid	Est Top (ftKB)
Preflush	21.0
Est Btm (ftKB)	1,592.5
Amount (sacks)	Class
665 C	
Description Intermediate Casing Cement	Cementing Start Date 9/10/2014
Fluid	Est Top (ftKB)
Vis sweep	21.0
Est Btm (ftKB)	6,129.8
Amount (sacks)	Class
465 G	
Description Lead Cement	Cementing Start Date 9/10/2014
Fluid	Est Top (ftKB)
Lead Cement	21.0
Est Btm (ftKB)	4,818.0
Amount (sacks)	Class
185 G	
Description Tail Cement	Cementing Start Date 9/10/2014
Fluid	Est Top (ftKB)
Tail Cement	4,818.0
Est Btm (ftKB)	6,129.8
Amount (sacks)	Class
185 G	
Description Displacement	Cementing Start Date 9/10/2014
Fluid	Est Top (ftKB)
Displacement	21.0
Est Btm (ftKB)	6,084.4
Amount (sacks)	Class