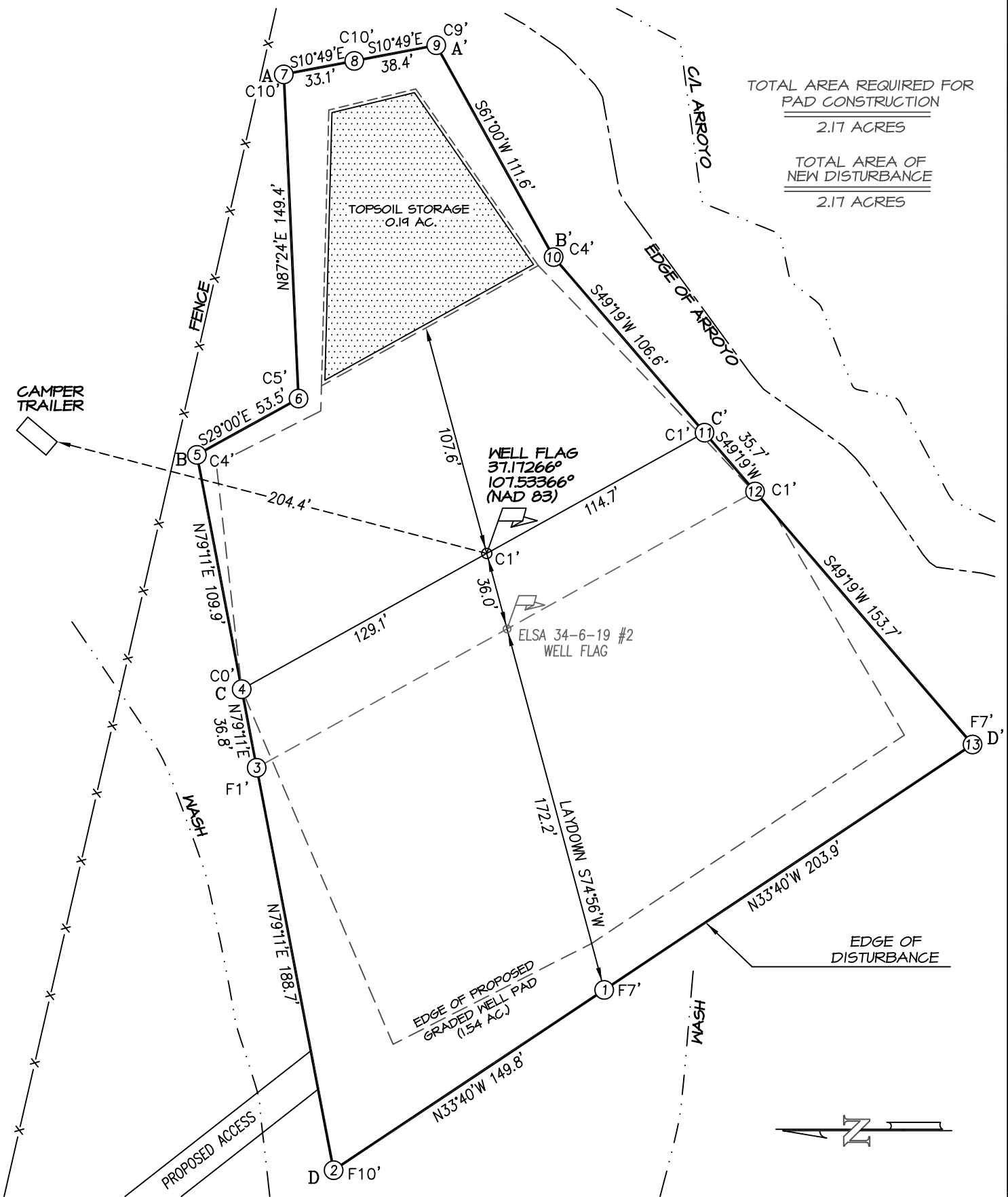


CATAMOUNT ENERGY PARTNERS: ELSA 34-6-19 #1
1303' FSL, 290' FEL, SECTION 19, T-34-N, R-6-W, S.U.L., N.M.P.M.,
LA PLATA COUNTY, CO. GROUND LEVEL ELEVATION: 6973'
PAD DRAWING



TOTAL AREA REQUIRED FOR
PAD CONSTRUCTION
 2.17 ACRES

TOTAL AREA OF
NEW DISTURBANCE
 2.17 ACRES