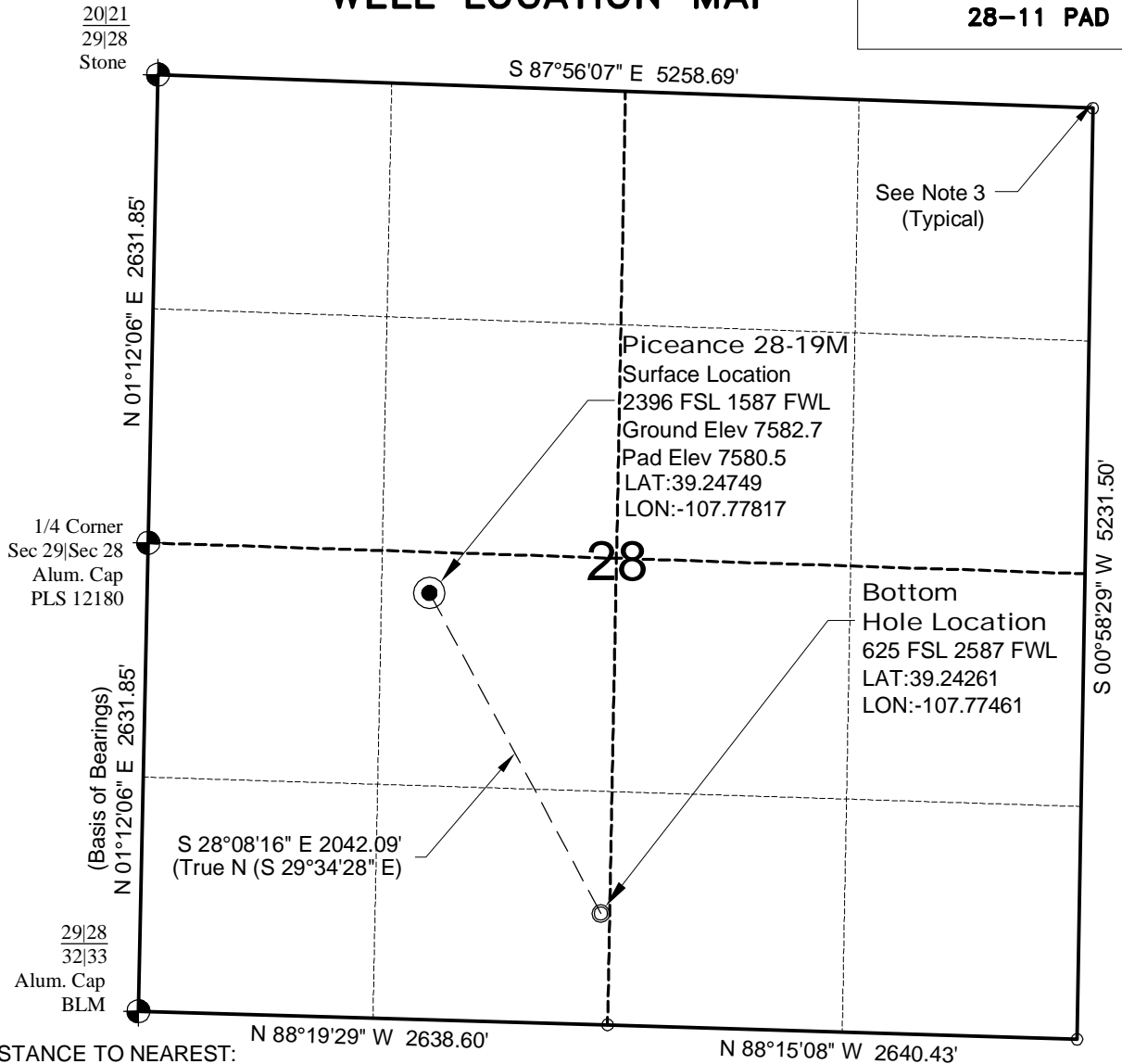


# WELL LOCATION MAP

**PICEANCE  
28-11 PAD**



## NOTE-DISTANCE TO NEAREST:

Property Line - W 1587'  
Public Road - HWY 330 - 1.5 Miles±  
Building - Barn 3164±  
Building - House 4599±  
Railroad - 18.5 Miles±  
Powerline - 2403±

## SURVEYOR'S STATEMENT

The undersigned hereby states that the well location shown hereon was staked on the ground based on existing monumentation and/or physical evidence found in the field and is correct to the best of my knowledge, information and belief.

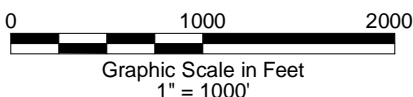
## NOTES

- 1.) Horizontal and vertical datum based on Mesa County control point "SN23" with an elevation of 8008.15. NAVD 1988.
- 2.) All directions, distances, and dimensions shown hereon are based on coordinates from the "Colorado coordinate system of 1983 central zone" (article 52 of title 38, C.R.S.).
- 3.) All section line dimensions shown hereon are based on field measurements of existing monuments and/or physical evidence found in the field unless otherwise indicated. Refer to land survey plats, and subdivision plats deposited in Mesa County & well plats filed with the COGCC.
- 4.) Physical features shown hereon are for graphical representation only.
- 5.) See Form 2A by others for visible improvements within 500' of wellhead.
- 6.) Distances to nearest section lines are measured perpendicularly.
- 7.) This is not a land survey nor land survey plat.
- 8.) Date of Survey 10/5/12; Date of Drawing 8/29/14. REV 1

PDOP Reading: 2.5 Instrument Operator: Dave Murrey



North



**GEOSURV**  
LAND SURVEYING AND MAPPING  
520 STACY COURT SUITE "B"  
LAFAYETTE, CO. 80026  
Ph 303 666 0379 Fx 303 665 6320

**PICEANCE ENERGY, LLC**  
**PICEANCE 28-19M**  
SL NE1/4 SW1/4 SECTION 28 T9S R93W  
BHL SE1/4 SW1/4 SECTION 28 T9S R93W  
6th PM MESA COUNTY COLORADO