

<div><div><div>RMWS</div><div>ROCKY MOUNTAIN WIRELINE SERVICE</div></div></div>				TEMPERATURE LOG CCL			
Company		WPX ENERGY					
Well		NER 413-32					
Field		RULISON					
County		GARFIELD		State		COLORADO	
Location:		API # : 05-045-21787-00		Other Services			
		SHL: 0127' FNL & 2575' FWL BHL: 1061' FSL & 2025' FWL					
SEC 5 TWP 7S RGE 93W		G.L. K.B. KB.		Elevation 7603' 26'		Elevation K.B. 7629' D.F. 7628' G.L. 7603'	
Permanent Datum							
Log Measured From							
Drilling Measured From							
Date		07-14-2014					
Run Number		ONE					
Depth Driller		10611'					
Present Depth Driller		NA					
Depth Logger		10555'					
Bottom Logged Interval		10555'					
Top Log Interval		SURFACE					
Fluid Level		FULL					
Type Fluid		WATER					
Max. Recorded Temp.		238.4° F					
Estimated Cement Top		4600'					
Equipment Number		219					
Location		GRAND JCT.					
Recorded By		COVINGTON					
Witnessed By		MR. OAKS					
Borehole Record		Casing Record					
Run Number		Bit From To		Size		Weight From To	
ONE				9.625"		32.3# SURFACE 1197'	
TWO				4.5"		11.6# SURFACE 10587'	

<<< Fold Here >>>

All interpretations are opinions based on inferences from electrical or other measurements and we cannot and do not guarantee the accuracy or correctness of any interpretation, and we shall not, except in the case of gross or willful negligence on our part, be liable or responsible for any loss, costs, damages, or expenses incurred or sustained by anyone resulting from any interpretation made by any of our officers, agents or employees. These interpretations are also subject to our general terms and conditions set out in our current Price Schedule.

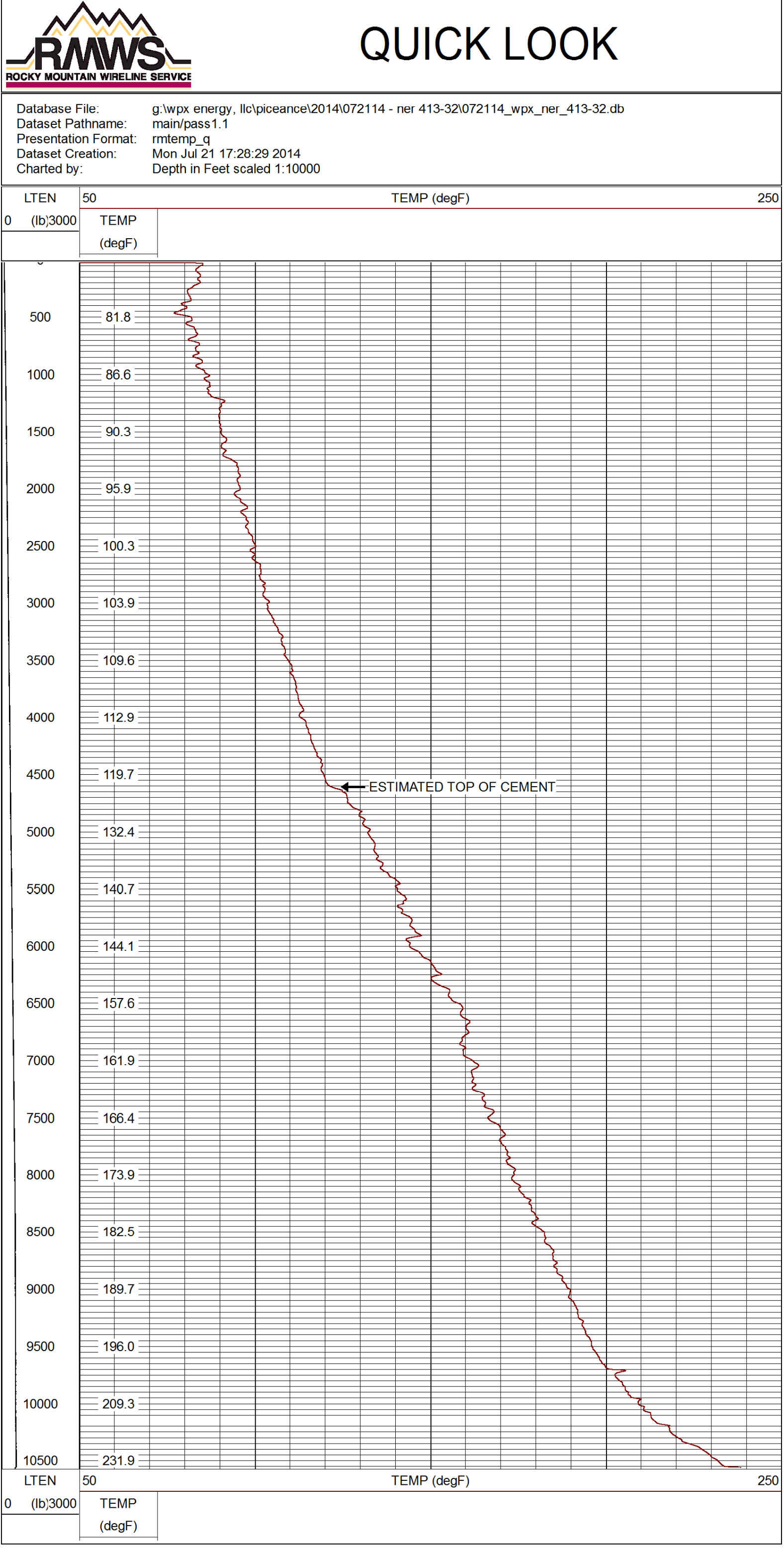
Comments

NOTE: THIS LOG IS UNCORRECTED FOR DEPTH,  
NO OPEN HOLE DATA PRESENT

MAX TEMP = 235° F

SHORT JOINTS = 6909' TO 6931'

MAIN PASS 5" = 100'  
CSG PSI = STATIC



<div><div><div>RMWS</div><div>ROCKY MOUNTAIN WIRELINE SERVICE</div></div></div>		Company	WPX ENERGY
		Well	NER 413-32
		Field	RULISON
		County	GARFIELD
		State	COLORADO