



A Division of Greene's Energy Group, LLC
PO Box 970, Big Piney, WY 83113

Accumulator Function Test

Date 9-9-14 Operator Conoco
Location Sky Ranch 4-65-9-10-14 Rig H&P 280
AFE# _____ BLM# _____

To check the usable fluid stored in the nitrogen bottles on the accumulator (O.S.O. #2 sections III.A.2.c.i. or ii or iii).

1. Make sure all rams, annular and HCR are open. (Close riser on manifold).
2. Ensure accumulator is pumped to working pressure (SHUT OFF ALL PUMPS).
3. **Take initial accumulator pressure reading** 3000 psi.
4. Close pipe rams, annular and HCR.
5. Open one set of pipe rams to simulate closing the blind rams.
6. If you have a 3 ram stack open the annular to achieve the 50+% safety factor for 5M and greater systems.
7. Pressure should be 200psi over desired precharge ($1500\text{psi} = 750\text{ desired psi and } 2000/3000 = 1000\text{ desired psi}$).
8. **Record the remaining pressure** 1100 psi.
9. Open annular and close HCR.

To check the precharge on bottles or spherical (O.S.O. #2 section III.A.2.d.)

1. Neutralize all accumulator handles.
2. Open the bleed off valve to the tank.
3. Watch and record where the psi drops. (Manifold psi should drop to zero).
4. **Record the pressure at drop** 975 psi.
5. If pressure drops below minimum precharge [$1500\text{psi} = 700\text{psi min. and } 2000/3000\text{psi} = 900\text{psi min. (Max 1100psi)}$].

To check the capacity of the accumulator pumps (O.S.O. #2 section III.A.2.f.)

1. Shut the accumulator bottles or spherical. (Isolate them from the pumps & manifold)
2. Close bleed off valve.
3. Close Annular and open HCR.
4. Using pumps (Air & Electric) record how long it takes for manifold pressure to equal 200psi over desire precharge psi ($1500\text{psi} = 750\text{ desired psi and } 2000/3000 = 1000\text{ desired psi}$)
5. **Record elapsed time** 1 min 22 sec (2 minutes or less).

shaded

ser

PRINTED IN U.S.A.

Lower Kelly

Upper Kelly

Stem Pipe To Pumps

Lower Pipe

Upper Pipe
Inside Kelly Clock

Deut

Tool

RAIT

Graphic Controls Inc

V&P GAGE

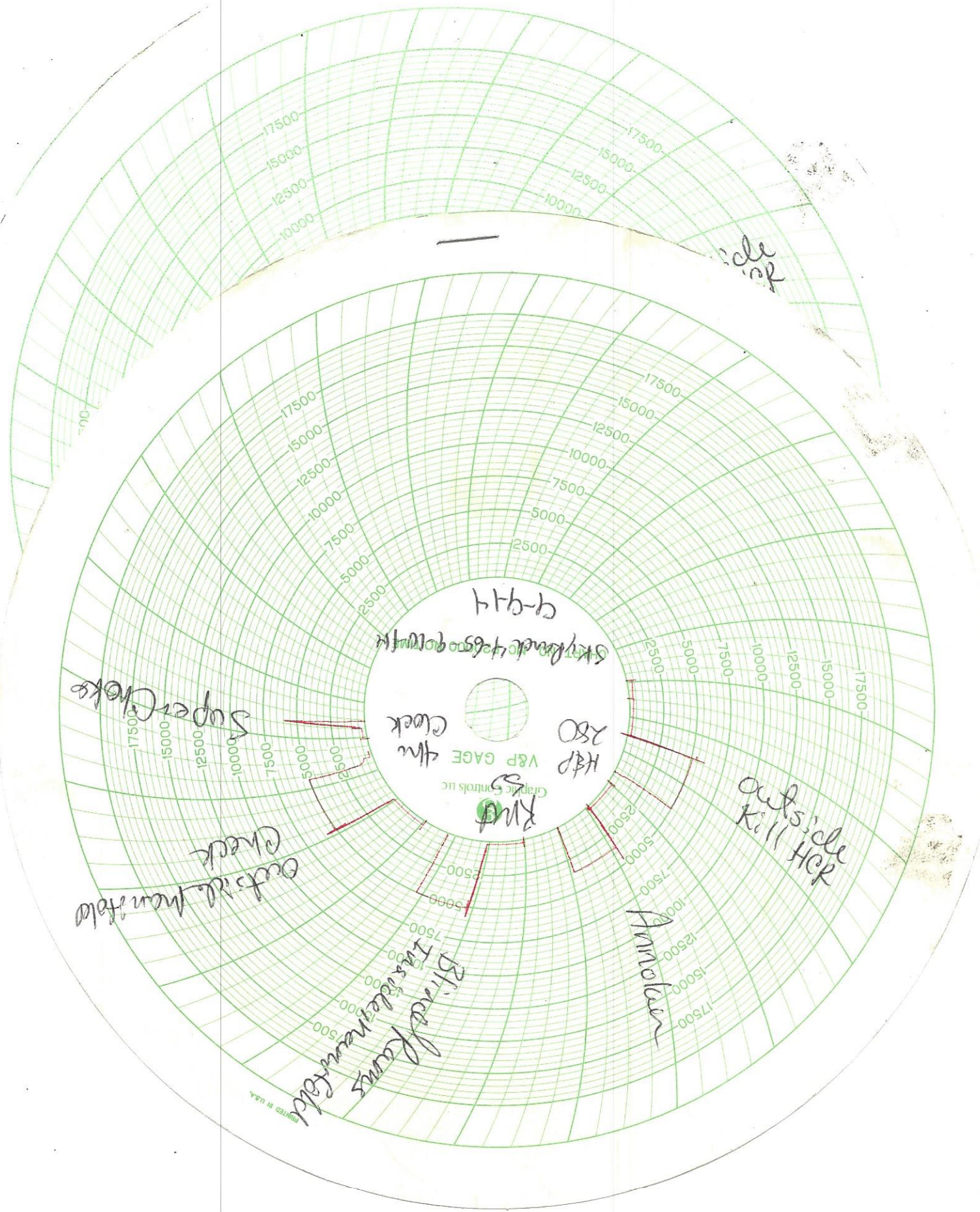


4th
Clock

SKYKLOCK 4-65-9-10-14

9-9-14

CHART NO. MC P25000 NO TIME



side
sp

9-9-14

skyline 465 9-10-14

clock

H&P 280

Graphic Controls Inc
V&P GAGE
RMT

Super Checks

outside. man hole
check

out side H&P

Another

Bridges
man hole