

BILL BARRETT CORP

**WELD COUNTY, COLORADO
COFFELT 5-61-35_36 NWNW PAD
COFFELT 5-61-35-0108CH2**

Wellbore #1

Plan: Design #1

Standard Planning Report

08 September, 2014



COMPANY DETAILS: BILL BARRETT CORP

Calculation Method: Minimum Curvature
 Error System: ISCWSA
 Scan Method: Closest Approach 3D
 Error Surface: Elliptical Conic
 Warning Method: Error Ratio

REFERENCE INFORMATION

Co-ordinate (N/E) Reference: Well COFFELT 5-61-35-0108CH2, True North
 Vertical (TVD) Reference: KB @ 4515.0ft (Original Well Elev)
 Section (VS) Reference: Slot - (0.0N, 0.0E)
 Measured Depth Reference: KB @ 4515.0ft (Original Well Elev)
 Calculation Method: Minimum Curvature

WELL DETAILS: COFFELT 5-61-35-0108CH2

+N/-S +E/-W Northing Easting Latitude Longitude
 0.0 0.0 1377714.90 3366590.7340° 21' 45.950 N 104° 11' 3.908 W

SECTION DETAILS

Sec	MD	Inc	Azi	TVD	+N/-S	+E/-W	DLeg	TFace	VSec	Target
1	0.0	0.00	0.00	0.0	0.0	0.0	0.00	0.00	0.0	
2	1000.0	0.00	0.00	1000.0	0.0	0.0	0.00	0.00	0.0	
3	1217.0	4.34	246.35	1216.8	-3.3	-7.5	2.00	246.35	-7.5	
4	5012.8	4.34	246.35	5001.7	-118.5	-270.7	0.00	0.00	-269.8	
5	5229.8	0.00	89.72	5218.5	-121.8	-278.2	2.00	180.00	-277.3	
6	5479.8	0.00	89.72	5468.5	-121.8	-278.2	0.00	89.72	-277.3	
7	6230.1	90.03	89.72	5946.0	-119.5	199.5	12.00	89.72	200.4	C 35-0108CH2 LP
8	15848.0	90.03	89.72	5941.0	-72.0	9817.4	0.00	0.00	9817.6	C 35-0108CH2 PBHL

PROJECT DETAILS: WELD COUNTY, COLORADO

Geodetic System: US State Plane 1983
 Datum: North American Datum 1983
 Ellipsoid: GRS 1980
 Zone: Colorado Northern Zone

FORMATION TOP DETAILS

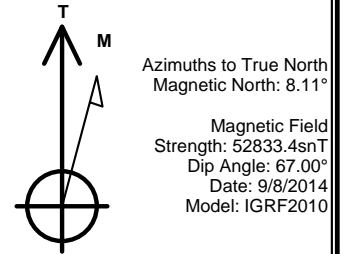
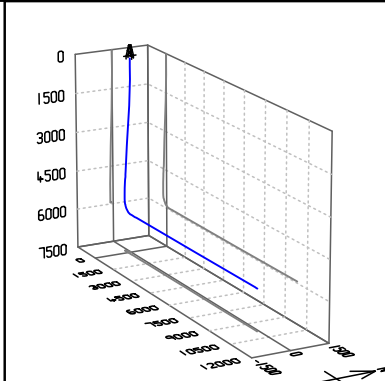
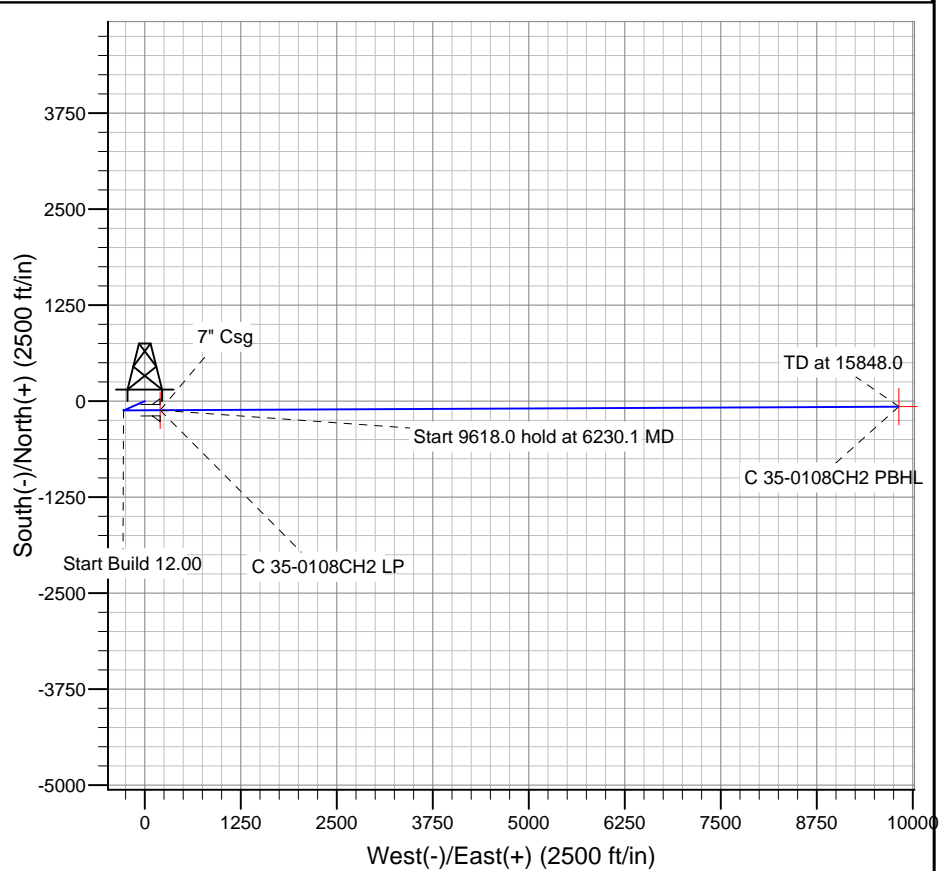
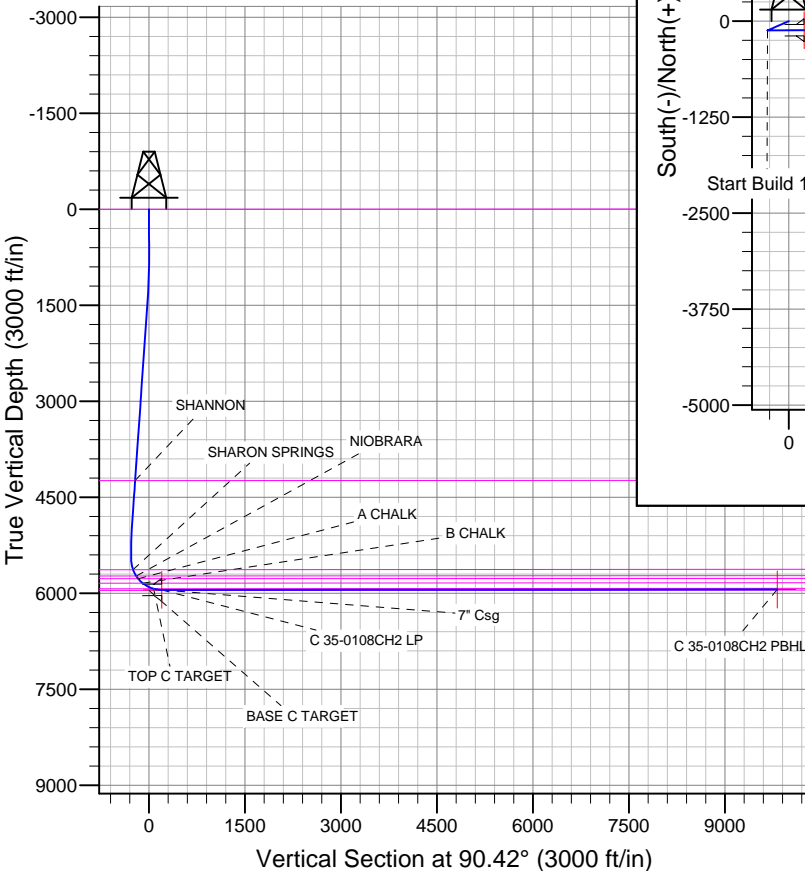
TVDPath	MDPath	Formation
0.0	0.0	BASE C TARGET
4240.0	4248.9	FOX HILLS BASE
5630.0	5644.5	SHANNON
5731.0	5757.7	SHARON SPRINGS
5772.0	5808.7	NIOBRARA
5842.0	5908.7	A CHALK
5928.0	6098.3	B CHALK
		TOP C TARGET

WELLBORE TARGET DETAILS

Name	TVD	+N/-S	+E/-W	Shape
C 35-0108CH2 PBHL	5941.0	-72.0	9817.4	Point
C 35-0108CH2 LP	5946.0	-119.5	199.5	Point

CASING DETAILS

TVD	MD	Name	Size
5946.0	6230.1	7" Csg	7



Bill Barrett Corp
Planning Report

Database:	Compass	Local Co-ordinate Reference:	Well COFFELT 5-61-35-0108CH2
Company:	BILL BARRETT CORP	TVD Reference:	KB @ 4515.0ft (Original Well Elev)
Project:	WELD COUNTY, COLORADO	MD Reference:	KB @ 4515.0ft (Original Well Elev)
Site:	COFFELT 5-61-35_36 NWNW PAD	North Reference:	True
Well:	COFFELT 5-61-35-0108CH2	Survey Calculation Method:	Minimum Curvature
Wellbore:	Wellbore #1		
Design:	Design #1		

Project	WELD COUNTY, COLORADO		
Map System:	US State Plane 1983	System Datum:	Mean Sea Level
Geo Datum:	North American Datum 1983		
Map Zone:	Colorado Northern Zone		

Site	COFFELT 5-61-35_36 NWNW PAD				
Site Position:		Northing:	1,377,730.21 ft	Latitude:	40° 21' 46.102 N
From:	Lat/Long	Easting:	3,366,590.51 ft	Longitude:	104° 11' 3.908 W
Position Uncertainty:	0.0 ft	Slot Radius:	"	Grid Convergence:	0.85 °

Well	COFFELT 5-61-35-0108CH2					
Well Position	+N-S	-15.3 ft	Northing:	1,377,714.90 ft	Latitude:	40° 21' 45.950 N
	+E-W	0.0 ft	Easting:	3,366,590.73 ft	Longitude:	104° 11' 3.908 W
Position Uncertainty		0.0 ft	Wellhead Elevation:	ft	Ground Level:	4,499.0 ft

Wellbore	Wellbore #1				
Magnetics	Model Name	Sample Date	Declination (°)	Dip Angle (°)	Field Strength (nT)
	IGRF2010	9/8/2014	8.11	67.00	52,833

Design	Design #1			
Audit Notes:				
Version:	Phase:	PLAN	Tie On Depth:	0.0
Vertical Section:	Depth From (TVD) (ft)	+N-S (ft)	+E-W (ft)	Direction (°)
	0.0	0.0	0.0	90.42

Plan Sections										
Measured Depth (ft)	Inclination (°)	Azimuth (°)	Vertical Depth (ft)	+N-S (ft)	+E-W (ft)	Dogleg Rate (°/100ft)	Build Rate (°/100ft)	Turn Rate (°/100ft)	TFO (°)	Target
0.0	0.00	0.00	0.0	0.0	0.0	0.00	0.00	0.00	0.00	
1,000.0	0.00	0.00	1,000.0	0.0	0.0	0.00	0.00	0.00	0.00	
1,217.0	4.34	246.35	1,216.8	-3.3	-7.5	2.00	2.00	0.00	246.35	
5,012.8	4.34	246.35	5,001.7	-118.5	-270.7	0.00	0.00	0.00	0.00	
5,229.8	0.00	89.72	5,218.5	-121.8	-278.2	2.00	-2.00	0.00	180.00	
5,479.8	0.00	89.72	5,468.5	-121.8	-278.2	0.00	0.00	0.00	89.72	
6,230.1	90.03	89.72	5,946.0	-119.5	199.5	12.00	12.00	0.00	89.72	C 35-0108CH2 LP
15,848.0	90.03	89.72	5,941.0	-72.0	9,817.4	0.00	0.00	0.00	0.00	C 35-0108CH2 PBT

Bill Barrett Corp
 Planning Report

Database:	Compass	Local Co-ordinate Reference:	Well COFFELT 5-61-35-0108CH2
Company:	BILL BARRETT CORP	TVD Reference:	KB @ 4515.0ft (Original Well Elev)
Project:	WELD COUNTY, COLORADO	MD Reference:	KB @ 4515.0ft (Original Well Elev)
Site:	COFFELT 5-61-35_36 NWNW PAD	North Reference:	True
Well:	COFFELT 5-61-35-0108CH2	Survey Calculation Method:	Minimum Curvature
Wellbore:	Wellbore #1		
Design:	Design #1		

Planned Survey										
Measured Depth (ft)	Inclination (°)	Azimuth (°)	Vertical Depth (ft)	+N/-S (ft)	+E/-W (ft)	Vertical Section (ft)	Dogleg Rate (°/100ft)	Build Rate (°/100ft)	Turn Rate (°/100ft)	
0.0	0.00	0.00	0.0	0.0	0.0	0.0	0.00	0.00	0.00	
FOX HILLS BASE										
100.0	0.00	0.00	100.0	0.0	0.0	0.0	0.00	0.00	0.00	
200.0	0.00	0.00	200.0	0.0	0.0	0.0	0.00	0.00	0.00	
300.0	0.00	0.00	300.0	0.0	0.0	0.0	0.00	0.00	0.00	
400.0	0.00	0.00	400.0	0.0	0.0	0.0	0.00	0.00	0.00	
500.0	0.00	0.00	500.0	0.0	0.0	0.0	0.00	0.00	0.00	
600.0	0.00	0.00	600.0	0.0	0.0	0.0	0.00	0.00	0.00	
700.0	0.00	0.00	700.0	0.0	0.0	0.0	0.00	0.00	0.00	
800.0	0.00	0.00	800.0	0.0	0.0	0.0	0.00	0.00	0.00	
900.0	0.00	0.00	900.0	0.0	0.0	0.0	0.00	0.00	0.00	
1,000.0	0.00	0.00	1,000.0	0.0	0.0	0.0	0.00	0.00	0.00	
1,100.0	2.00	246.35	1,100.0	-0.7	-1.6	-1.6	2.00	2.00	0.00	
1,200.0	4.00	246.35	1,199.8	-2.8	-6.4	-6.4	2.00	2.00	0.00	
1,217.0	4.34	246.35	1,216.8	-3.3	-7.5	-7.5	2.00	2.00	0.00	
1,300.0	4.34	246.35	1,299.6	-5.8	-13.3	-13.2	0.00	0.00	0.00	
1,400.0	4.34	246.35	1,399.3	-8.9	-20.2	-20.1	0.00	0.00	0.00	
1,500.0	4.34	246.35	1,499.0	-11.9	-27.1	-27.1	0.00	0.00	0.00	
1,600.0	4.34	246.35	1,598.7	-14.9	-34.1	-34.0	0.00	0.00	0.00	
1,700.0	4.34	246.35	1,698.4	-18.0	-41.0	-40.9	0.00	0.00	0.00	
1,800.0	4.34	246.35	1,798.1	-21.0	-47.9	-47.8	0.00	0.00	0.00	
1,900.0	4.34	246.35	1,897.8	-24.0	-54.9	-54.7	0.00	0.00	0.00	
2,000.0	4.34	246.35	1,997.5	-27.1	-61.8	-61.6	0.00	0.00	0.00	
2,100.0	4.34	246.35	2,097.3	-30.1	-68.7	-68.5	0.00	0.00	0.00	
2,200.0	4.34	246.35	2,197.0	-33.1	-75.7	-75.4	0.00	0.00	0.00	
2,300.0	4.34	246.35	2,296.7	-36.2	-82.6	-82.3	0.00	0.00	0.00	
2,400.0	4.34	246.35	2,396.4	-39.2	-89.5	-89.2	0.00	0.00	0.00	
2,500.0	4.34	246.35	2,496.1	-42.2	-96.5	-96.2	0.00	0.00	0.00	
2,600.0	4.34	246.35	2,595.8	-45.3	-103.4	-103.1	0.00	0.00	0.00	
2,700.0	4.34	246.35	2,695.5	-48.3	-110.3	-110.0	0.00	0.00	0.00	
2,800.0	4.34	246.35	2,795.3	-51.4	-117.3	-116.9	0.00	0.00	0.00	
2,900.0	4.34	246.35	2,895.0	-54.4	-124.2	-123.8	0.00	0.00	0.00	
3,000.0	4.34	246.35	2,994.7	-57.4	-131.1	-130.7	0.00	0.00	0.00	
3,100.0	4.34	246.35	3,094.4	-60.5	-138.1	-137.6	0.00	0.00	0.00	
3,200.0	4.34	246.35	3,194.1	-63.5	-145.0	-144.5	0.00	0.00	0.00	
3,300.0	4.34	246.35	3,293.8	-66.5	-151.9	-151.4	0.00	0.00	0.00	
3,400.0	4.34	246.35	3,393.5	-69.6	-158.9	-158.3	0.00	0.00	0.00	
3,500.0	4.34	246.35	3,493.2	-72.6	-165.8	-165.2	0.00	0.00	0.00	
3,600.0	4.34	246.35	3,593.0	-75.6	-172.7	-172.2	0.00	0.00	0.00	
3,700.0	4.34	246.35	3,692.7	-78.7	-179.7	-179.1	0.00	0.00	0.00	
3,800.0	4.34	246.35	3,792.4	-81.7	-186.6	-186.0	0.00	0.00	0.00	
3,900.0	4.34	246.35	3,892.1	-84.8	-193.5	-192.9	0.00	0.00	0.00	
4,000.0	4.34	246.35	3,991.8	-87.8	-200.4	-199.8	0.00	0.00	0.00	
4,100.0	4.34	246.35	4,091.5	-90.8	-207.4	-206.7	0.00	0.00	0.00	
4,200.0	4.34	246.35	4,191.2	-93.9	-214.3	-213.6	0.00	0.00	0.00	
4,248.9	4.34	246.35	4,240.0	-95.3	-217.7	-217.0	0.00	0.00	0.00	
SHANNON										
4,300.0	4.34	246.35	4,291.0	-96.9	-221.2	-220.5	0.00	0.00	0.00	
4,400.0	4.34	246.35	4,390.7	-99.9	-228.2	-227.4	0.00	0.00	0.00	
4,500.0	4.34	246.35	4,490.4	-103.0	-235.1	-234.3	0.00	0.00	0.00	
4,600.0	4.34	246.35	4,590.1	-106.0	-242.0	-241.3	0.00	0.00	0.00	
4,700.0	4.34	246.35	4,689.8	-109.0	-249.0	-248.2	0.00	0.00	0.00	
4,800.0	4.34	246.35	4,789.5	-112.1	-255.9	-255.1	0.00	0.00	0.00	
4,900.0	4.34	246.35	4,889.2	-115.1	-262.8	-262.0	0.00	0.00	0.00	

Bill Barrett Corp
Planning Report

Database:	Compass	Local Co-ordinate Reference:	Well COFFELT 5-61-35-0108CH2
Company:	BILL BARRETT CORP	TVD Reference:	KB @ 4515.0ft (Original Well Elev)
Project:	WELD COUNTY, COLORADO	MD Reference:	KB @ 4515.0ft (Original Well Elev)
Site:	COFFELT 5-61-35_36 NWNW PAD	North Reference:	True
Well:	COFFELT 5-61-35-0108CH2	Survey Calculation Method:	Minimum Curvature
Wellbore:	Wellbore #1		
Design:	Design #1		

Planned Survey									
Measured Depth (ft)	Inclination (°)	Azimuth (°)	Vertical Depth (ft)	+N/-S (ft)	+E/-W (ft)	Vertical Section (ft)	Dogleg Rate (°/100ft)	Build Rate (°/100ft)	Turn Rate (°/100ft)
5,000.0	4.34	246.35	4,988.9	-118.1	-269.8	-268.9	0.00	0.00	0.00
5,012.8	4.34	246.35	5,001.7	-118.5	-270.7	-269.8	0.00	0.00	0.00
5,100.0	2.60	246.35	5,088.7	-120.7	-275.5	-274.6	2.00	-2.00	0.00
5,200.0	0.60	246.35	5,188.7	-121.8	-278.0	-277.1	2.00	-2.00	0.00
5,229.8	0.00	89.72	5,218.5	-121.8	-278.2	-277.3	2.00	-2.00	0.00
5,300.0	0.00	89.72	5,288.7	-121.8	-278.2	-277.3	0.00	0.00	0.00
5,400.0	0.00	89.72	5,388.7	-121.8	-278.2	-277.3	0.00	0.00	0.00
5,479.8	0.00	89.72	5,468.5	-121.8	-278.2	-277.3	0.00	0.00	0.00
5,500.0	2.42	89.72	5,488.7	-121.8	-277.8	-276.9	12.00	12.00	0.00
5,600.0	14.42	89.72	5,587.4	-121.8	-263.1	-262.2	12.00	12.00	0.00
5,644.5	19.77	89.72	5,630.0	-121.7	-250.1	-249.2	12.00	12.00	0.00
SHARON SPRINGS									
5,700.0	26.42	89.72	5,681.0	-121.6	-228.3	-227.4	12.00	12.00	0.00
5,757.7	33.35	89.72	5,731.0	-121.4	-199.6	-198.7	12.00	12.00	0.00
NIOBRARA									
5,800.0	38.42	89.72	5,765.2	-121.3	-174.8	-173.9	12.00	12.00	0.00
5,808.7	39.46	89.72	5,772.0	-121.3	-169.3	-168.4	12.00	12.00	0.00
A CHALK									
5,900.0	50.42	89.72	5,836.5	-121.0	-104.9	-104.1	12.00	12.00	0.00
5,908.7	51.46	89.72	5,842.0	-120.9	-98.2	-97.3	12.00	12.00	0.00
B CHALK									
6,000.0	62.42	89.72	5,891.7	-120.6	-21.8	-20.9	12.00	12.00	0.00
6,098.3	74.22	89.72	5,928.0	-120.1	69.4	70.3	12.00	12.00	0.00
TOP C TARGET									
6,100.0	74.42	89.72	5,928.5	-120.1	71.0	71.9	12.00	12.00	0.00
6,200.0	86.42	89.72	5,945.1	-119.6	169.5	170.3	12.00	12.00	0.00
6,230.1	90.03	89.72	5,946.0	-119.5	199.5	200.4	11.99	11.99	0.00
7" Csg - C 35-0108CH2 LP									
6,300.0	90.03	89.72	5,946.0	-119.1	269.4	270.3	0.00	0.00	0.00
6,400.0	90.03	89.72	5,945.9	-118.6	369.4	370.3	0.00	0.00	0.00
6,500.0	90.03	89.72	5,945.9	-118.1	469.4	470.3	0.00	0.00	0.00
6,600.0	90.03	89.72	5,945.8	-117.6	569.4	570.3	0.00	0.00	0.00
6,700.0	90.03	89.72	5,945.8	-117.2	669.4	670.3	0.00	0.00	0.00
6,800.0	90.03	89.72	5,945.7	-116.7	769.4	770.3	0.00	0.00	0.00
6,900.0	90.03	89.72	5,945.7	-116.2	869.4	870.3	0.00	0.00	0.00
7,000.0	90.03	89.72	5,945.6	-115.7	969.4	970.3	0.00	0.00	0.00
7,100.0	90.03	89.72	5,945.5	-115.2	1,069.4	1,070.2	0.00	0.00	0.00
7,200.0	90.03	89.72	5,945.5	-114.7	1,169.4	1,170.2	0.00	0.00	0.00
7,300.0	90.03	89.72	5,945.4	-114.2	1,269.4	1,270.2	0.00	0.00	0.00
7,400.0	90.03	89.72	5,945.4	-113.7	1,369.4	1,370.2	0.00	0.00	0.00
7,500.0	90.03	89.72	5,945.3	-113.2	1,469.4	1,470.2	0.00	0.00	0.00
7,600.0	90.03	89.72	5,945.3	-112.7	1,569.4	1,570.2	0.00	0.00	0.00
7,700.0	90.03	89.72	5,945.2	-112.2	1,669.4	1,670.2	0.00	0.00	0.00
7,800.0	90.03	89.72	5,945.2	-111.7	1,769.4	1,770.2	0.00	0.00	0.00
7,900.0	90.03	89.72	5,945.1	-111.2	1,869.4	1,870.2	0.00	0.00	0.00
8,000.0	90.03	89.72	5,945.1	-110.7	1,969.4	1,970.2	0.00	0.00	0.00
8,100.0	90.03	89.72	5,945.0	-110.2	2,069.4	2,070.2	0.00	0.00	0.00
8,200.0	90.03	89.72	5,945.0	-109.7	2,169.4	2,170.2	0.00	0.00	0.00
8,300.0	90.03	89.72	5,944.9	-109.3	2,269.4	2,270.2	0.00	0.00	0.00
8,400.0	90.03	89.72	5,944.9	-108.8	2,369.4	2,370.1	0.00	0.00	0.00
8,500.0	90.03	89.72	5,944.8	-108.3	2,469.4	2,470.1	0.00	0.00	0.00
8,600.0	90.03	89.72	5,944.8	-107.8	2,569.4	2,570.1	0.00	0.00	0.00
8,700.0	90.03	89.72	5,944.7	-107.3	2,669.4	2,670.1	0.00	0.00	0.00

Bill Barrett Corp
 Planning Report

Database:	Compass	Local Co-ordinate Reference:	Well COFFELT 5-61-35-0108CH2
Company:	BILL BARRETT CORP	TVD Reference:	KB @ 4515.0ft (Original Well Elev)
Project:	WELD COUNTY, COLORADO	MD Reference:	KB @ 4515.0ft (Original Well Elev)
Site:	COFFELT 5-61-35_36 NWNW PAD	North Reference:	True
Well:	COFFELT 5-61-35-0108CH2	Survey Calculation Method:	Minimum Curvature
Wellbore:	Wellbore #1		
Design:	Design #1		

Planned Survey									
Measured Depth (ft)	Inclination (°)	Azimuth (°)	Vertical Depth (ft)	+N/-S (ft)	+E/-W (ft)	Vertical Section (ft)	Dogleg Rate (°/100ft)	Build Rate (°/100ft)	Turn Rate (°/100ft)
8,800.0	90.03	89.72	5,944.7	-106.8	2,769.4	2,770.1	0.00	0.00	0.00
8,900.0	90.03	89.72	5,944.6	-106.3	2,869.4	2,870.1	0.00	0.00	0.00
9,000.0	90.03	89.72	5,944.6	-105.8	2,969.4	2,970.1	0.00	0.00	0.00
9,100.0	90.03	89.72	5,944.5	-105.3	3,069.4	3,070.1	0.00	0.00	0.00
9,200.0	90.03	89.72	5,944.5	-104.8	3,169.4	3,170.1	0.00	0.00	0.00
9,300.0	90.03	89.72	5,944.4	-104.3	3,269.4	3,270.1	0.00	0.00	0.00
9,400.0	90.03	89.72	5,944.4	-103.8	3,369.4	3,370.1	0.00	0.00	0.00
9,500.0	90.03	89.72	5,944.3	-103.3	3,469.4	3,470.1	0.00	0.00	0.00
9,600.0	90.03	89.72	5,944.2	-102.8	3,569.4	3,570.1	0.00	0.00	0.00
9,700.0	90.03	89.72	5,944.2	-102.3	3,669.4	3,670.0	0.00	0.00	0.00
9,800.0	90.03	89.72	5,944.1	-101.9	3,769.4	3,770.0	0.00	0.00	0.00
9,900.0	90.03	89.72	5,944.1	-101.4	3,869.4	3,870.0	0.00	0.00	0.00
10,000.0	90.03	89.72	5,944.0	-100.9	3,969.4	3,970.0	0.00	0.00	0.00
10,100.0	90.03	89.72	5,944.0	-100.4	4,069.4	4,070.0	0.00	0.00	0.00
10,200.0	90.03	89.72	5,943.9	-99.9	4,169.4	4,170.0	0.00	0.00	0.00
10,300.0	90.03	89.72	5,943.9	-99.4	4,269.4	4,270.0	0.00	0.00	0.00
10,400.0	90.03	89.72	5,943.8	-98.9	4,369.4	4,370.0	0.00	0.00	0.00
10,500.0	90.03	89.72	5,943.8	-98.4	4,469.4	4,470.0	0.00	0.00	0.00
10,600.0	90.03	89.72	5,943.7	-97.9	4,569.4	4,570.0	0.00	0.00	0.00
10,700.0	90.03	89.72	5,943.7	-97.4	4,669.4	4,670.0	0.00	0.00	0.00
10,800.0	90.03	89.72	5,943.6	-96.9	4,769.4	4,770.0	0.00	0.00	0.00
10,900.0	90.03	89.72	5,943.6	-96.4	4,869.4	4,870.0	0.00	0.00	0.00
11,000.0	90.03	89.72	5,943.5	-95.9	4,969.4	4,970.0	0.00	0.00	0.00
11,100.0	90.03	89.72	5,943.5	-95.4	5,069.4	5,069.9	0.00	0.00	0.00
11,200.0	90.03	89.72	5,943.4	-94.9	5,169.4	5,169.9	0.00	0.00	0.00
11,300.0	90.03	89.72	5,943.4	-94.4	5,269.4	5,269.9	0.00	0.00	0.00
11,400.0	90.03	89.72	5,943.3	-94.0	5,369.4	5,369.9	0.00	0.00	0.00
11,500.0	90.03	89.72	5,943.3	-93.5	5,469.4	5,469.9	0.00	0.00	0.00
11,600.0	90.03	89.72	5,943.2	-93.0	5,569.4	5,569.9	0.00	0.00	0.00
11,700.0	90.03	89.72	5,943.2	-92.5	5,669.4	5,669.9	0.00	0.00	0.00
11,800.0	90.03	89.72	5,943.1	-92.0	5,769.4	5,769.9	0.00	0.00	0.00
11,900.0	90.03	89.72	5,943.1	-91.5	5,869.4	5,869.9	0.00	0.00	0.00
12,000.0	90.03	89.72	5,943.0	-91.0	5,969.4	5,969.9	0.00	0.00	0.00
12,100.0	90.03	89.72	5,942.9	-90.5	6,069.4	6,069.9	0.00	0.00	0.00
12,200.0	90.03	89.72	5,942.9	-90.0	6,169.4	6,169.9	0.00	0.00	0.00
12,300.0	90.03	89.72	5,942.8	-89.5	6,269.4	6,269.9	0.00	0.00	0.00
12,400.0	90.03	89.72	5,942.8	-89.0	6,369.4	6,369.8	0.00	0.00	0.00
12,500.0	90.03	89.72	5,942.7	-88.5	6,469.4	6,469.8	0.00	0.00	0.00
12,600.0	90.03	89.72	5,942.7	-88.0	6,569.4	6,569.8	0.00	0.00	0.00
12,700.0	90.03	89.72	5,942.6	-87.5	6,669.4	6,669.8	0.00	0.00	0.00
12,800.0	90.03	89.72	5,942.6	-87.0	6,769.4	6,769.8	0.00	0.00	0.00
12,900.0	90.03	89.72	5,942.5	-86.5	6,869.4	6,869.8	0.00	0.00	0.00
13,000.0	90.03	89.72	5,942.5	-86.1	6,969.4	6,969.8	0.00	0.00	0.00
13,100.0	90.03	89.72	5,942.4	-85.6	7,069.4	7,069.8	0.00	0.00	0.00
13,200.0	90.03	89.72	5,942.4	-85.1	7,169.4	7,169.8	0.00	0.00	0.00
13,300.0	90.03	89.72	5,942.3	-84.6	7,269.4	7,269.8	0.00	0.00	0.00
13,400.0	90.03	89.72	5,942.3	-84.1	7,369.4	7,369.8	0.00	0.00	0.00
13,500.0	90.03	89.72	5,942.2	-83.6	7,469.4	7,469.8	0.00	0.00	0.00
13,600.0	90.03	89.72	5,942.2	-83.1	7,569.3	7,569.8	0.00	0.00	0.00
13,700.0	90.03	89.72	5,942.1	-82.6	7,669.3	7,669.7	0.00	0.00	0.00
13,800.0	90.03	89.72	5,942.1	-82.1	7,769.3	7,769.7	0.00	0.00	0.00
13,900.0	90.03	89.72	5,942.0	-81.6	7,869.3	7,869.7	0.00	0.00	0.00
14,000.0	90.03	89.72	5,942.0	-81.1	7,969.3	7,969.7	0.00	0.00	0.00
14,100.0	90.03	89.72	5,941.9	-80.6	8,069.3	8,069.7	0.00	0.00	0.00

Bill Barrett Corp

Planning Report

Database:	Compass	Local Co-ordinate Reference:	Well COFFELT 5-61-35-0108CH2
Company:	BILL BARRETT CORP	TVD Reference:	KB @ 4515.0ft (Original Well Elev)
Project:	WELD COUNTY, COLORADO	MD Reference:	KB @ 4515.0ft (Original Well Elev)
Site:	COFFELT 5-61-35_36 NWNW PAD	North Reference:	True
Well:	COFFELT 5-61-35-0108CH2	Survey Calculation Method:	Minimum Curvature
Wellbore:	Wellbore #1		
Design:	Design #1		

Planned Survey

Measured Depth (ft)	Inclination (°)	Azimuth (°)	Vertical Depth (ft)	+N/-S (ft)	+E/-W (ft)	Vertical Section (ft)	Dogleg Rate (°/100ft)	Build Rate (°/100ft)	Turn Rate (°/100ft)
14,200.0	90.03	89.72	5,941.9	-80.1	8,169.3	8,169.7	0.00	0.00	0.00
14,300.0	90.03	89.72	5,941.8	-79.6	8,269.3	8,269.7	0.00	0.00	0.00
14,400.0	90.03	89.72	5,941.8	-79.1	8,369.3	8,369.7	0.00	0.00	0.00
14,500.0	90.03	89.72	5,941.7	-78.6	8,469.3	8,469.7	0.00	0.00	0.00
14,600.0	90.03	89.72	5,941.6	-78.2	8,569.3	8,569.7	0.00	0.00	0.00
14,700.0	90.03	89.72	5,941.6	-77.7	8,669.3	8,669.7	0.00	0.00	0.00
14,800.0	90.03	89.72	5,941.5	-77.2	8,769.3	8,769.7	0.00	0.00	0.00
14,900.0	90.03	89.72	5,941.5	-76.7	8,869.3	8,869.7	0.00	0.00	0.00
15,000.0	90.03	89.72	5,941.4	-76.2	8,969.3	8,969.6	0.00	0.00	0.00
15,100.0	90.03	89.72	5,941.4	-75.7	9,069.3	9,069.6	0.00	0.00	0.00
15,200.0	90.03	89.72	5,941.3	-75.2	9,169.3	9,169.6	0.00	0.00	0.00
15,300.0	90.03	89.72	5,941.3	-74.7	9,269.3	9,269.6	0.00	0.00	0.00
15,400.0	90.03	89.72	5,941.2	-74.2	9,369.3	9,369.6	0.00	0.00	0.00
15,500.0	90.03	89.72	5,941.2	-73.7	9,469.3	9,469.6	0.00	0.00	0.00
15,600.0	90.03	89.72	5,941.1	-73.2	9,569.3	9,569.6	0.00	0.00	0.00
15,700.0	90.03	89.72	5,941.1	-72.7	9,669.3	9,669.6	0.00	0.00	0.00
15,800.0	90.03	89.72	5,941.0	-72.2	9,769.3	9,769.6	0.00	0.00	0.00
15,848.0	90.03	89.72	5,941.0	-72.0	9,817.4	9,817.6	0.00	0.00	0.00

C 35-0108CH2 PBHL

Casing Points

Measured Depth (ft)	Vertical Depth (ft)	Name	Casing Diameter (")	Hole Diameter (")
6,230.1	5,946.0	7" Csg	7	8-3/4

Formations

Measured Depth (ft)	Vertical Depth (ft)	Name	Lithology	Dip (°)	Dip Direction (°)
0.0	0.0	FOX HILLS BASE		-0.03	89.72
4,248.9	4,240.0	SHANNON		-0.03	89.72
5,644.5	5,630.0	SHARON SPRINGS		-0.03	89.72
5,757.7	5,731.0	NIOBRARA		-0.03	89.72
5,808.7	5,772.0	A CHALK		-0.03	89.72
5,908.7	5,842.0	B CHALK		-0.03	89.72
6,098.3	5,928.0	TOP C TARGET		-0.03	89.72
	5,956.0	BASE C TARGET		-0.03	89.72