

1. AREAS WITHIN THE GREELEY-ROTHE HORIZONTAL PAD AND NORTH WELL LOCATION WILL BE CLEARED AND GRUBBED, AS REQUIRED.
2. THERE ARE MINOR GRADING ACTIVITIES WITH THIS PROJECT.
3. RESTORATION OF ANY PROJECT AREAS SHALL BE REVEGETATED PER CITY OF GREELEY AND COGCC STANDARDS.
4. PRIOR TO THE ONSET OF CONSTRUCTION ACTIVITIES, ANY BLACK-TAILED PRAIRIE DOGS INHABITING PORTIONS OF THE SITE SHALL BE RELOCATED OR HUMANELY EUTHANIZED BY THE DEVELOPER OR DEVELOPER'S AGENT USING APPROVED METHODS FOR EUTHANASIA AND RELOCATION METHODS THAT DO NOT DISPLACE PRAIRIE DOGS ONTO NEIGHBORING PROPERTIES.

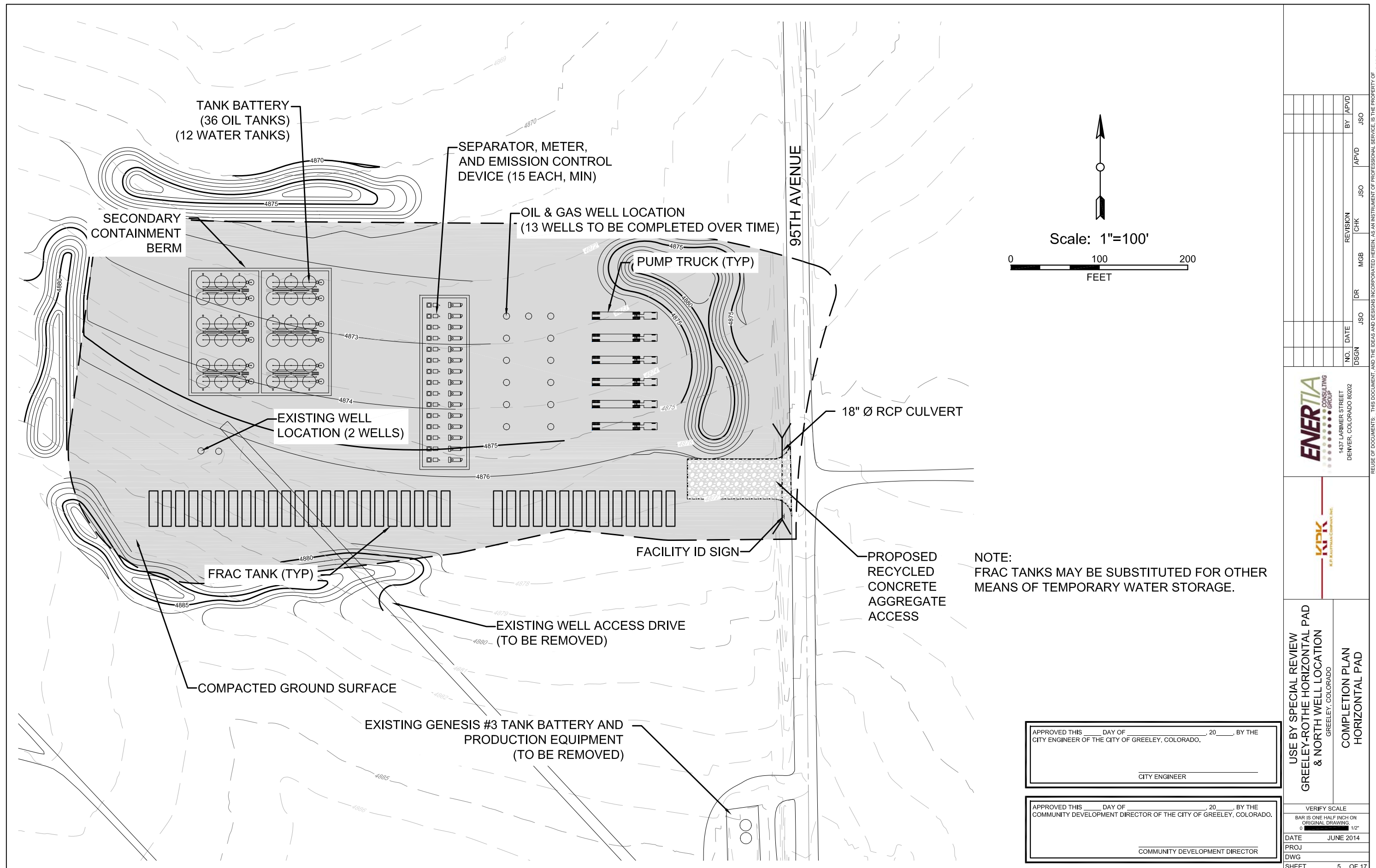
DESTRUCTION OF PRAIRIE DOG TOWNS SHALL NOT OCCUR DURING THE NESTING SEASON (MAY 15 - SEPTEMBER 15) OF THE BURROWING OWL. UNLESS THE TOWN HAS BEEN SURVEYED BY A PROFESSIONAL BIOLOGIST/ECOLOGIST FAMILIAR WITH BURROWING OWL BEHAVIOR AND IT IS FOUND THAT BURROWING OWLS ARE NOT ENGAGED IN NESTING/BROOD-REARING ACTIVITIES.

1. ALL EROSION, AND SEDIMENT CONTROL MUST CONFORM TO THE PROJECT EROSION AND SEDIMENT CONTROL, THE PROJECT STORM WATER MANAGEMENT PLAN AND THE CITY OF GREELEY LAND GRADING REQUIREMENTS.
2. ALL TEMPORARY AND PERMANENT SOIL EROSION AND SEDIMENT CONTROL PRACTICES MUST BE MAINTAINED AND REPAIRED AS NEEDED TO ASSURE CONTINUED PERFORMANCE OF THEIR INTENDED FUNCTION. FOR EXAMPLE, EROSION CONTROL BLANKETS, SEDIMENT CONTROL LOGS, OR SILT FENCES MAY REQUIRE PERIODIC REPLACEMENT.
3. THE CONTRACTOR MUST IMMEDIATELY TAKE ALL NECESSARY STEPS TO CONTROL SEDIMENT DISCHARGE.
4. THE CONTRACTOR IS RESPONSIBLE FOR CLEAN UP AND REMOVAL OF ALL SEDIMENT AND DEBRIS FROM ALL DRAINAGE INFRASTRUCTURE AND OTHER PUBLIC FACILITIES.
5. THE CONTRACTOR MUST TAKE REASONABLE PRECAUTIONS TO ENSURE THAT VEHICLES DO NOT TRACK OR SPILL EARTH MATERIALS ON TO STREETS/ROADS AND MUST IMMEDIATELY REMOVE SUCH MATERIALS IF THIS OCCURS.

- ENERTIA CONSULTING GROUP AND IS NOT TO BE USED, IN WHOLE OR IN PART, FOR ANY OTHER PROJECT WITHOUT THE WRITTEN AUTHORIZATION OF ENERTIA CONSULTING GROUP.

APPROVED THIS _____ DAY OF _____, 20____, BY THE
COMMUNITY DEVELOPMENT DIRECTOR OF THE CITY OF GREELEY, COLORADO.

COMMUNITY DEVELOPMENT DIRECTOR



GENERAL NOTES:

- AREAS WITHIN THE GREELEY-ROTHE HORIZONTAL PAD AND NORTH WELL LOCATION WILL BE CLEARED AND GRUBBED, AS REQUIRED.
- THERE ARE MINOR GRADING ACTIVITIES WITH THIS PROJECT.
- RESTORATION OF ANY PROJECT AREAS SHALL BE REVEGETATED PER CITY OF GREELEY AND COGCC STANDARDS.
- PRIOR TO THE ONSET OF CONSTRUCTION ACTIVITIES, ANY BLACK-TAILED PRAIRIE DOGS INHABITING PORTIONS OF THE SITE SHALL BE RELOCATED OR HUMANELY EUTHANIZED BY THE DEVELOPER OR DEVELOPER'S AGENT USING APPROVED METHODS FOR EUTHANASIA AND RELOCATION METHODS THAT DO NOT DISPLACE PRAIRIE DOGS ONTO NEIGHBORING PROPERTIES. DESTRUCTION OF PRAIRIE DOG TOWNS SHALL NOT OCCUR DURING THE NESTING SEASON (MAY 15 - SEPTEMBER 15) OF THE BURROWING OWL UNLESS THE TOWN HAS BEEN SURVEYED BY A PROFESSIONAL BIOLOGIST/ECOLOGIST FAMILIAR WITH BURROWING OWL BEHAVIOR AND IT IS FOUND THAT BURROWING OWLS ARE NOT ENGAGED IN NESTING/BROOD-REARING ACTIVITIES.

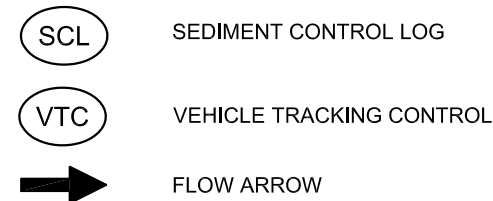
EROSION & SEDIMENT CONTROL NOTES

- ALL EROSION, AND SEDIMENT CONTROL MUST CONFORM TO THE PROJECT EROSION AND SEDIMENT CONTROL, THE PROJECT STORM WATER MANAGEMENT PLAN AND THE CITY OF GREELEY LAND GRADING REQUIREMENTS.
- ALL TEMPORARY AND PERMANENT SOIL EROSION AND SEDIMENT CONTROL PRACTICES MUST BE MAINTAINED AND REPAIRED AS NEEDED TO ASSURE CONTINUED PERFORMANCE OF THEIR INTENDED FUNCTION. FOR EXAMPLE, EROSION CONTROL BLANKETS, SEDIMENT CONTROL LOGS, OR SILT FENCES MAY REQUIRE PERIODIC REPLACEMENT.
- THE CONTRACTOR MUST IMMEDIATELY TAKE ALL NECESSARY STEPS TO CONTROL SEDIMENT DISCHARGE.
- THE CONTRACTOR IS RESPONSIBLE FOR CLEAN UP AND REMOVAL OF ALL SEDIMENT AND DEBRIS FROM ALL DRAINAGE INFRASTRUCTURE AND OTHER PUBLIC FACILITIES.
- THE CONTRACTOR MUST TAKE REASONABLE PRECAUTIONS TO ENSURE THAT VEHICLES DO NOT TRACK OR SPILL EARTH MATERIALS ON TO STREETS/ROADS AND MUST IMMEDIATELY REMOVE SUCH MATERIALS IF THIS OCCURS.

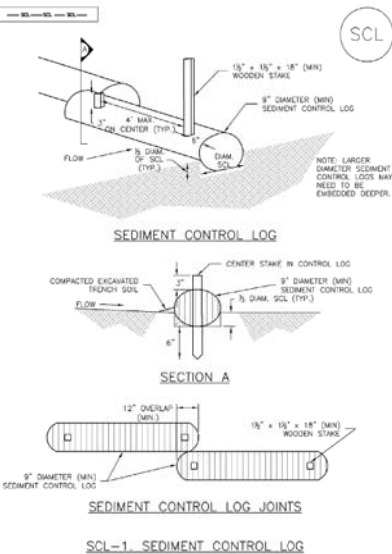
- CONTRACTOR SHALL TAKE ALL NECESSARY AND PROPER PRECAUTIONS TO PROTECT ADJACENT PROPERTIES FROM ANY AND ALL DAMAGE THAT MAY OCCUR FROM STORMWATER RUNOFF AND/OR DEPOSITION OF DEBRIS RESULTING FROM ANY AND ALL WORK.
- EROSION AND SEDIMENT CONTROL STRUCTURES ARE TO BE INSPECTED AND MAINTAINED AFTER EVERY STORM EVENT THAT MAY CAUSE ACCELERATED EROSION AND WILL BE CLEANED AND MAINTAINED AT THE DIRECTION OF THE KPK ENGINEER OR OTHER AUTHORIZED REPRESENTATIVE.
- THE CONTRACTOR IS RESPONSIBLE FOR MAINTENANCE OF ALL EROSION CONTROL STRUCTURES. THESE STRUCTURES ARE TO BE INSPECTED BY THE CONTRACTOR EVERY 10 DAYS AND AFTER EVERY PRECIPITATION EVENT THAT MAY CAUSE EROSION TO INSURE THEIR EFFICIENCY AND TO EVALUATE MAINTENANCE NEEDS. MAINTENANCE OF THESE STRUCTURES MAY BE DIRECTED AT ANY TIME BY THE COUNTY, KPK ENGINEER OR OTHER AUTHORIZED REPRESENTATIVE.

- THE APPROVED EROSION CONTROL PLAN MAY REQUIRE CHANGES OR ALTERATIONS AFTER APPROVAL TO MEET CHANGING CONDITIONS OR ADDRESS INEFFICIENCIES IN DESIGN OR INSTALLATION. CHANGES PROPOSED BY THE CONTRACTOR MUST BE APPROVED BY THE KPK ENGINEER OR OTHER AUTHORIZED REPRESENTATIVE.
- NATURAL VEGETATION SHALL BE RETAINED AND PROTECTED WHEREVER POSSIBLE. EXPOSURE OF SOIL TO EROSION BY REMOVAL OR DISTURBANCE OF VEGETATION SHALL BE LIMITED TO THE AREA REQUIRED FOR IMMEDIATE CONSTRUCTION OPERATIONS AND FOR THE SHORTEST PRACTICAL PERIOD OF TIME.

BMP LEGEND

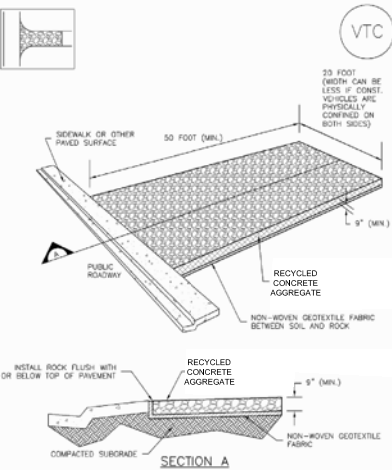


Sediment Control Log (SCL) SC-2

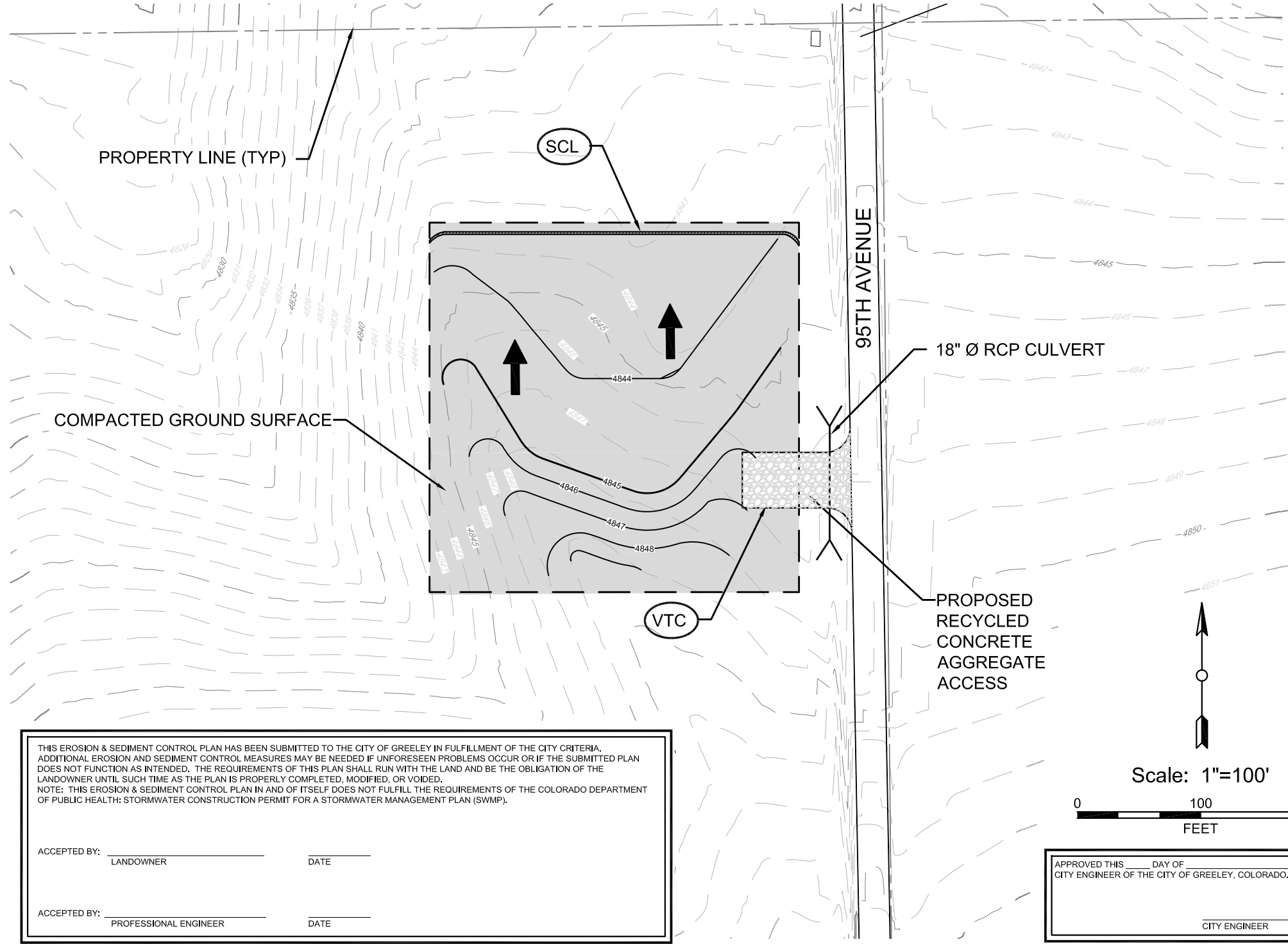


November 2010 Urban Drainage and Flood Control District Urban Storm Drainage Criteria Manual Volume 3 SCL-3

Vehicle Tracking Control (VTC) SM-4



November 2010 Urban Drainage and Flood Control District Urban Storm Drainage Criteria Manual Volume 3 VTC-3



THIS EROSION & SEDIMENT CONTROL PLAN HAS BEEN SUBMITTED TO THE CITY OF GREELEY IN FULFILLMENT OF THE CITY CRITERIA. ADDITIONAL EROSION AND SEDIMENT CONTROL MEASURES MAY BE NEEDED IF UNFORESEEN PROBLEMS OCCUR OR IF THE SUBMITTED PLAN DOES NOT FUNCTION AS INTENDED. THE REQUIREMENTS OF THIS PLAN SHALL RUN WITH THE LAND AND BE THE OBLIGATION OF THE LANDOWNER UNTIL SUCH TIME AS THE PLAN IS PROPERLY COMPLETED, MODIFIED, OR VOIDED.

NOTE: THIS EROSION & SEDIMENT CONTROL PLAN IN AND OF ITSELF DOES NOT FULFILL THE REQUIREMENTS OF THE COLORADO DEPARTMENT OF PUBLIC HEALTH: STORMWATER CONSTRUCTION PERMIT FOR A STORMWATER MANAGEMENT PLAN (SWMP).

ACCEPTED BY: LANDOWNER DATE

ACCEPTED BY: PROFESSIONAL ENGINEER DATE

APPROVED THIS DAY OF , 20, BY THE CITY ENGINEER OF THE CITY OF GREELEY, COLORADO.

CITY ENGINEER

APPROVED THIS DAY OF , 20, BY THE COMMUNITY DEVELOPMENT DIRECTOR OF THE CITY OF GREELEY, COLORADO.

COMMUNITY DEVELOPMENT DIRECTOR

ENERTIA CONSULTING GROUP
1437 LARIMER STREET
DENVER, COLORADO 80202

KPK K&P KAUTZMAN COMPANY, INC.

USE BY SPECIAL REVIEW
GREELEY-ROTHE HORIZONTAL PAD
& NORTH WELL LOCATION
GREELEY, COLORADO
GRADING, EROSION, AND
SEDIMENT CONTROL PLAN
NORTH WELL LOCATION

VERIFY SCALE

BAR IS ONE HALF INCH ON ORIGINAL DRAWING: 0 1/2"

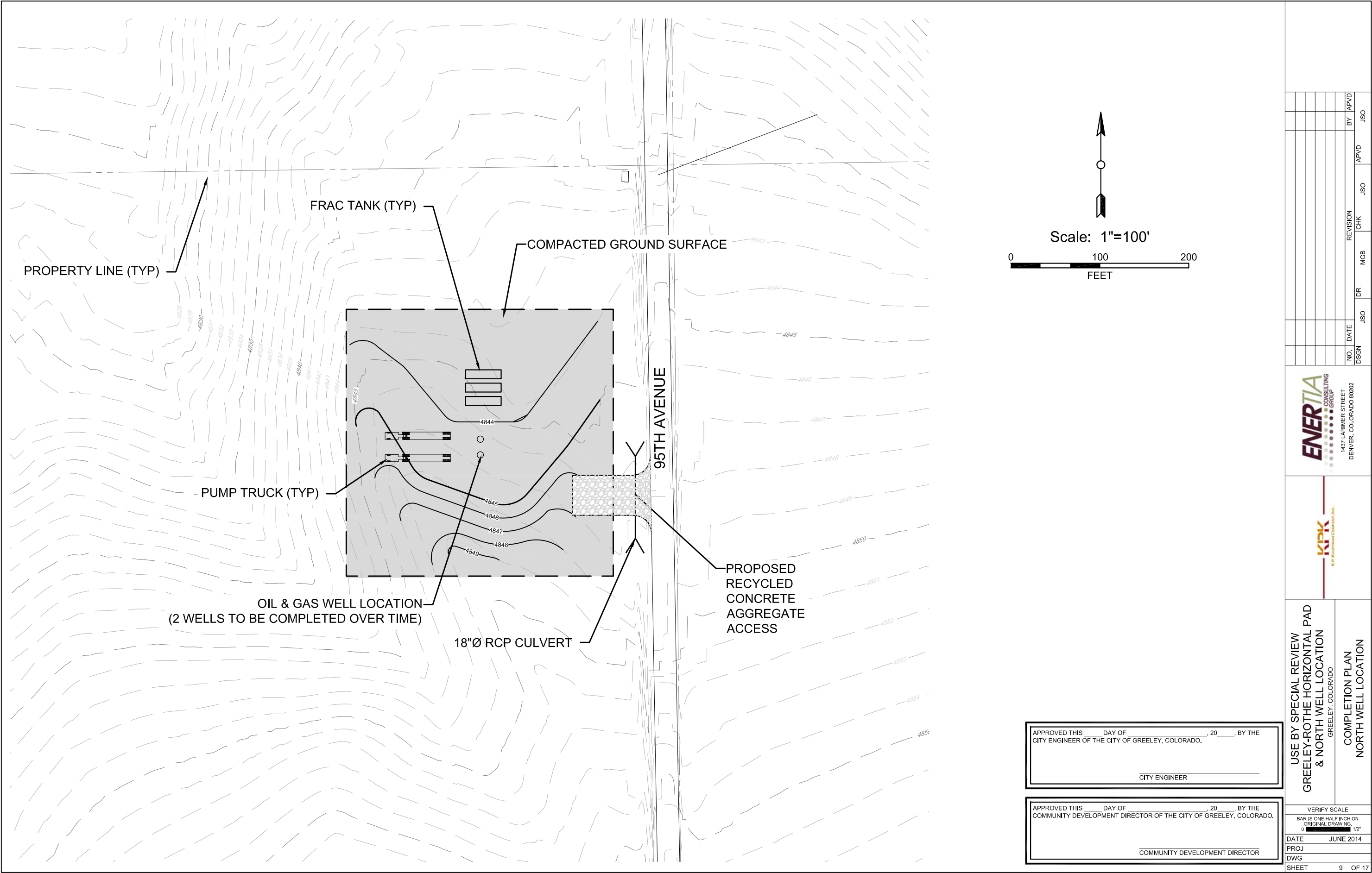
DATE JUNE 2014

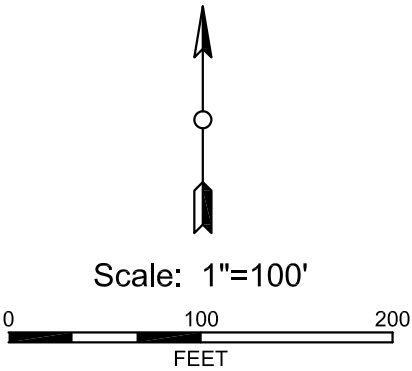
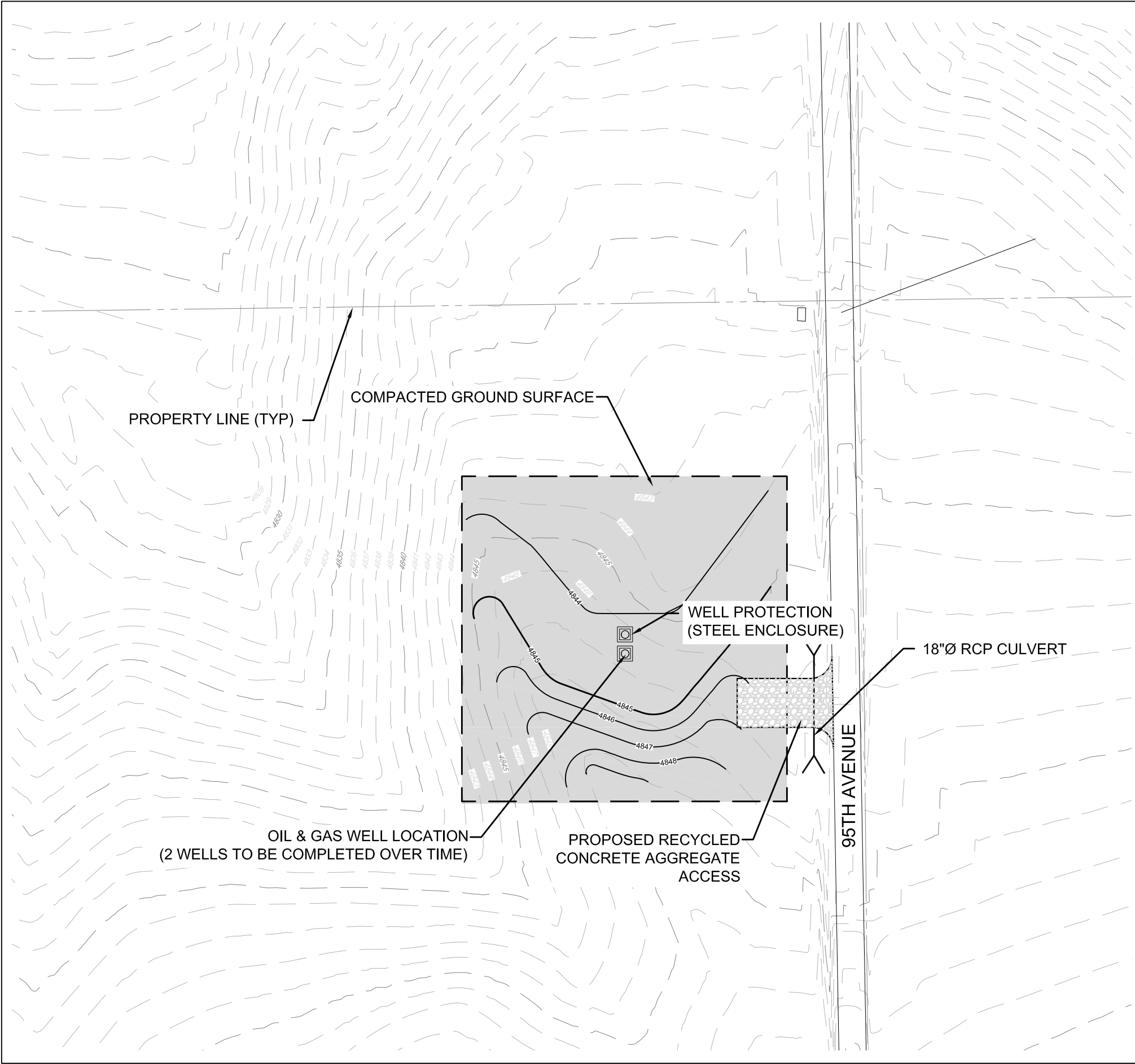
PROJ

DWG

SHEET 7 OF 17

ENERTIA CONSULTING GROUP AND IS NOT TO BE USED, IN WHOLE OR IN PART, FOR ANY OTHER PROJECT WITHOUT THE WRITTEN AUTHORIZATION OF ENERTIA CONSULTING GROUP.





APPROVED THIS ____ DAY OF _____, 20____, BY THE
CITY ENGINEER OF THE CITY OF GREELEY, COLORADO.

CITY ENGINEER

APPROVED THIS ____ DAY OF _____, 20____, BY THE
COMMUNITY DEVELOPMENT DIRECTOR OF THE CITY OF GREELEY, COLORADO.

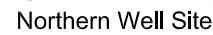
COMMUNITY DEVELOPMENT DIRECTOR

USE BY SPECIAL REVIEW GREELEY-ROTHER HORIZONTAL PAD & NORTH WELL LOCATION		PRODUCTION PLAN NORTH WELL LOCATION	
GREELEY, COLORADO		GREELEY, COLORADO	
ENERTIA CONSULTING GROUP 1437 LARIMER STREET DENVER, COLORADO 80202		KPK K&P CONSULTING GROUP, INC.	
NO.	DATE	DR	CHK
DSCN	JSO	MSB	JSO
BY	APVD	BY	APVD
	JSO		JSO

VERIFY SCALE
BAR IS ONE HALF INCH ON
ORIGINAL DRAWING
0 1/2"

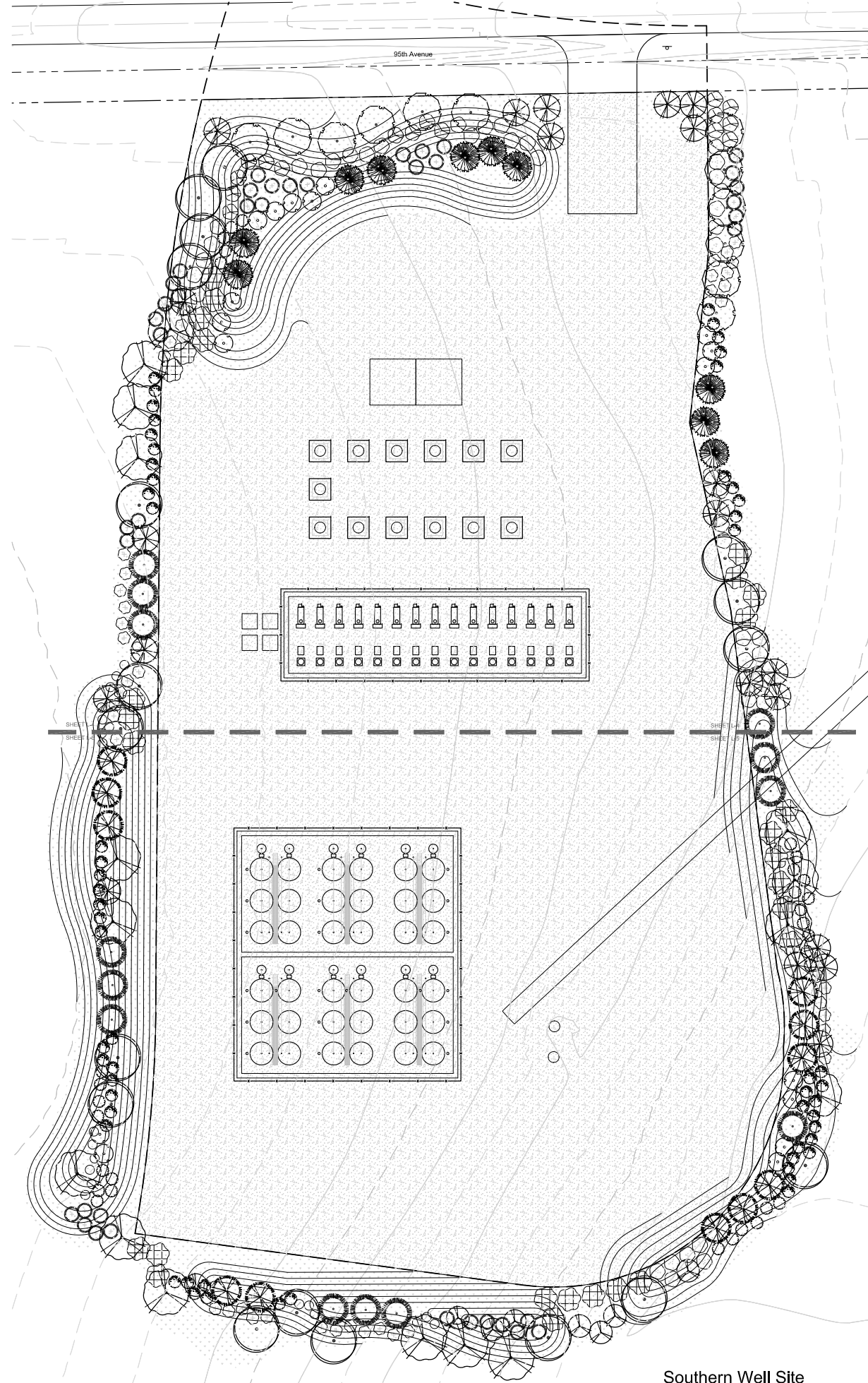
DATE JUNE 2014
PROJ
DWG
SHEET 10 OF 17

REUSE OF DOCUMENTS: THIS DOCUMENT AND THE IDEAS AND DESIGNS INCORPORATED HEREIN, AS AN INSTRUMENT OF PROFESSIONAL SERVICE, IS THE PROPERTY OF ENERTIA CONSULTING GROUP AND IS NOT TO BE USED, IN WHOLE OR IN PART, FOR ANY OTHER PROJECT WITHOUT THE WRITTEN AUTHORIZATION OF ENERTIA CONSULTING GROUP.



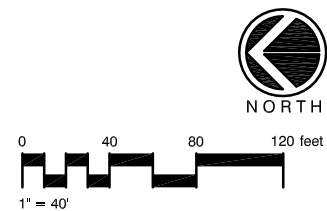
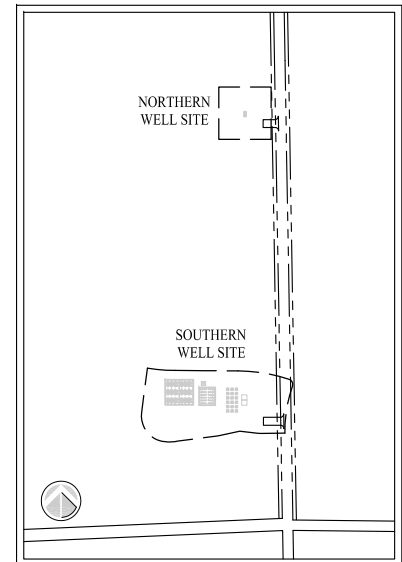
Required Plant Quantities - Northern Well Site						
	LF	BUFFER TYPE	SHADE TREE	EVERGREEN TREE	ORNAMENTAL TREE	TYPE 3 SHRUB
NORTH	292	D	6	4	6	37
EAST	300	D	6	5	6	38
SOUTH	297	D	6	5	6	38
WEST	300	D	6	5	6	38
TOTALS			24	19	24	151

Proposed Plant Quantities - Northern Well Site						
	LF	BUFFER TYPE	SHADE TREE	EVERGREEN TREE	ORNAMENTAL TREE	TYPE 3 SHRUB
NORTH	292	D	6	4	6	37
EAST	300	D	6	5	6	38
SOUTH	297	D	6	5	6	38
WEST	300	D	6	5	6	38
TOTALS			24	19	24	151



Required Plant Quantities - Southern Well Site						
	LF	BUFFER TYPE	SHADE TREE	EVERGREEN TREE	ORNAMENTAL TREE	TYPE 3 SHRUB
NORTH	742	D	15	11	15	95
EAST	329	D	7	5	7	42
SOUTH	629	D	13	10	13	80
WEST	517	D	11	8	11	66
TOTALS			46	34	46	283

Proposed Plant Quantities - Southern Well Site						
	LF	BUFFER TYPE	SHADE TREE	EVERGREEN TREE	ORNAMENTAL TREE	TYPE 3 SHRUB
NORTH	742	D	15	11	15	95
EAST	329	D	7	5	7	42
SOUTH	629	D	13	10	13	80
WEST	517	D	11	8	11	66
TOTALS			46	34	46	283



APPROVED THIS _____ DAY OF _____, 20____, BY THE
COMMUNITY DEVELOPMENT DIRECTOR OF THE CITY OF GREELEY,
COLORADO.

COMMUNITY DEVELOPMENT DIRECTOR

LANDSCAPE ARCHITECT

pcs group inc. www.pcsgroupeco.com
Independence Plaza 1001 16th Street
#3 B-180 Denver, CO 80265
(ph) 303.531.4905 (fx) 303.531.4908

[illegible]

1437 LARIMER STREET
DENVER, COLORADO 80202



K. P. KAUFFMAN COMPANY, INC.

USE BY SPECIAL REVIEW
GREELEY-ROTHER HORIZONTAL PAD
& NORTH WELL LOCATION
GREELEY, COLORADO

OVERALL LANDSCAPE PLAN

VERIFY SCALE

BAR IS ONE HALF INCH ON ORIGINAL DRAWING.

DATE	June 10, 2014
------	---------------

PROJ	
------	--

DWG	L-1
-----	-----

SHEET 11 OF 17

11 OF 17