

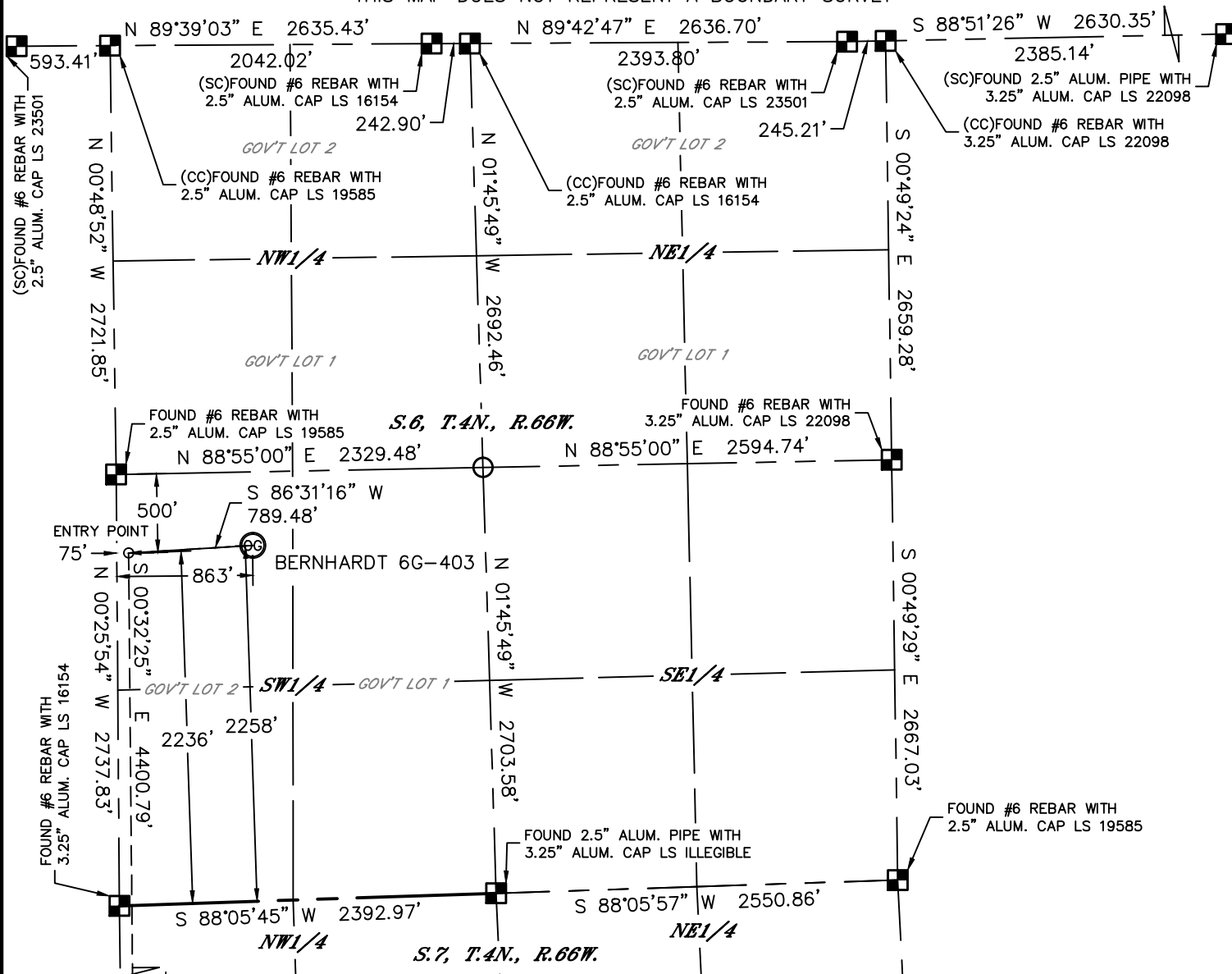


Lat40°, Inc. 1635 Foxtrail Drive, Suite 325 Loveland, CO 970-776-3321

WELL LOCATION CERTIFICATE

THIS MAP DOES NOT REPRESENT A BOUNDARY SURVEY

SECTION: 6
TOWNSHIP: 4N
RANGE: 66W



In accordance with a request from Mac Neumann with PDC ENERGY Lat40°, Inc. has determined the surface location of the BERNHARDT 6G-403 to be 2258' from the SOUTH line and 863' from the WEST line as measured at right angles from the section lines of Section 6, Township 4 North, Range 66 West and the bottom hole to be 2164' from the NORTH line and 75' from the WEST line as measured at right angles from the section lines of Section 7, Township 4 North, Range 66 West of the Sixth Principal Meridian, County of Weld, State of Colorado.

I hereby state that this Well Location Certificate was prepared by me, or under my direct supervision, that the fieldwork was completed on 8/8/2014, for and on behalf of PDC ENERGY. That this is not a Land Survey Plat or an Improvement Survey Plat, and that it is not to be relied upon for establishment of fence, building, or other future improvement lines.



NOTE:

- 1) Bearings shown are Grid Bearings of the Colorado State Plane Coordinate System, North Zone, North American Datum 1983. The lined dimensions as contained herein are based upon the "U.S. Survey Foot."
- 2) Ground elevations are based on an observed GPS elevation (NAVD 1988 DATUM).
- 3) IMPROVEMENTS: See LOCATION DRAWING for all visible improvements within 500' of disturbed area.
- 4) SURFACE USE: CROP LAND
- 5) INSTRUMENT OPERATOR: BRIAN ROTTINGHAUS
- 6) NEAREST CULTURAL ITEMS:
BUILDING: ±1820' NW
BUILDING UNIT: ±1874' NW
HIGH OCCUPANCY BUILDING UNIT: ±4194' SW
DESIGNATED OUTSIDE ACTIVITY AREA: 5280'+
PUBLIC ROAD: (CR 25) ±417' NW
ABOVEGROUND UTILITY: ±200' SE
RAILROAD: ±185' SE (ABANDONED)
PROPERTY LINE: ±467' N

SURFACE LOCATION

LAT: 40.34008°N
LONG: 104.82669°W
PDOP: 1.4
ELEV: 4722'
1/4,1/4: NWSW

BOTTOM HOLE

LAT: 40.32789°N
LONG: 104.82949°W

ENTRY POINT

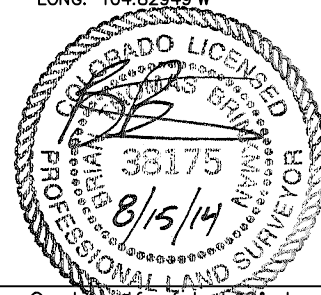
LAT: 40.33996°N
LONG: 104.82951°W

LEGEND

- = ALIQUOT MONUMENT AS DESCRIBED
○ = CALCULATED POSITION

SHEET 1 OF 2

Brian T. Brinkman—On behalf of Lat40°, Inc.
Colorado Licensed Professional
Land Surveyor No. 38175
DATE: 8/14/2014
PROJECT#: 2013177





Lat40°, Inc. 1635 Foxtrail Drive, Suite 325 Loveland, CO 970-776-3321

WELL LOCATION CERTIFICATE

SECTION: 6
TOWNSHIP: 4N
RANGE: 66W

S 86°31'16" W
789.48'

THIS MAP DOES NOT REPRESENT A BOUNDARY SURVEY

BERNHARDT 6G-403

ENTRY POINT

S.6, T.4N., R.66W.

SW1/4

SE1/4

FOUND #6 REBAR WITH
3.25" ALUM. CAP LS 16154

N 88°05'45" E 2392.97'

N 88°05'57" E 2550.86'

FOUND #6 REBAR WITH
2.5" ALUM. CAP LS 19585

FOUND 2.5" ALUM. PIPE WITH
3.25" ALUM. CAP LS ILLEGIBLE

S 00°32'25" E 2164'

N 00°39'10" W 2664.56'

N 00°39'10" W 2664.56'

N 00°39'10" W 2664.56'

N 00°39'10" W 2664.56'

N 00°39'10" W 2664.56'

N 00°39'10" W 2664.56'

N 00°39'10" W 2664.56'

N 00°39'10" W 2664.56'

N 00°39'10" W 2664.56'

N 00°39'10" W 2664.56'

N 00°39'10" W 2664.56'

N 00°39'10" W 2664.56'

N 00°39'10" W 2664.56'

N 00°39'10" W 2664.56'

N 00°39'10" W 2664.56'

N 00°39'10" W 2664.56'

N 00°39'10" W 2664.56'

N 00°39'10" W 2664.56'

N 00°39'10" W 2664.56'

N 00°39'10" W 2664.56'

N 00°39'10" W 2664.56'

N 00°39'10" W 2664.56'

N 00°39'10" W 2664.56'

N 00°39'10" W 2664.56'

N 00°39'10" W 2664.56'

N 00°39'10" W 2664.56'

N 00°39'10" W 2664.56'

N 00°39'10" W 2664.56'

N 00°39'10" W 2664.56'

N 00°39'10" W 2664.56'

N 00°39'10" W 2664.56'

N 00°39'10" W 2664.56'

N 00°39'10" W 2664.56'

N 00°39'10" W 2664.56'

N 00°39'10" W 2664.56'

N 00°39'10" W 2664.56'

N 00°39'10" W 2664.56'

N 00°39'10" W 2664.56'

N 00°39'10" W 2664.56'

N 00°39'10" W 2664.56'

N 00°39'10" W 2664.56'

N 00°39'10" W 2664.56'

N 00°39'10" W 2664.56'

N 00°39'10" W 2664.56'

FOUND #6 REBAR WITH
2.5" ALUM. CAP LS 24657

N 87°51'00" E 2479.89'

N 87°51'05" E 2566.20'

FOUND ALUM. PIPE WITH
3.25" ALUM. CAP LS 13155

FOUND 2.5" ALUM. PIPE WITH
3.25" ALUM. CAP LS 13155

S.7, T.4N., R.66W.

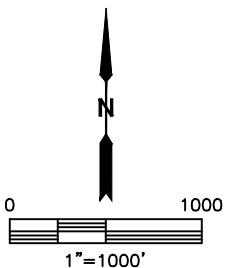
SW1/4

SE1/4

FOUND #6 REBAR WITH
2.5" ALUM. CAP LS 23405

FOUND #6 REBAR WITH
2.5" ALUM. CAP LS 24305

FOUND ALUM. PIPE WITH
3.25" ALUM. CAP LS 13155

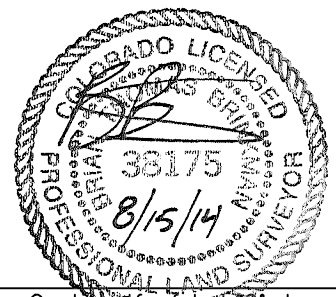


LEGEND

- = ALIQUOT MONUMENT AS DESCRIBED
- = CALCULATED POSITION

SHEET 2 OF 2

Brian T. Brinkman—On behalf of Lat40°, Inc.
Colorado Licensed Professional
Land Surveyor No. 38175
DATE: 8/14/2014
PROJECT#: 2013177

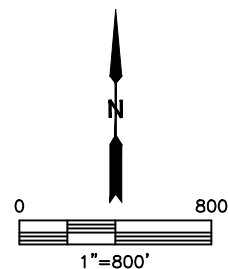
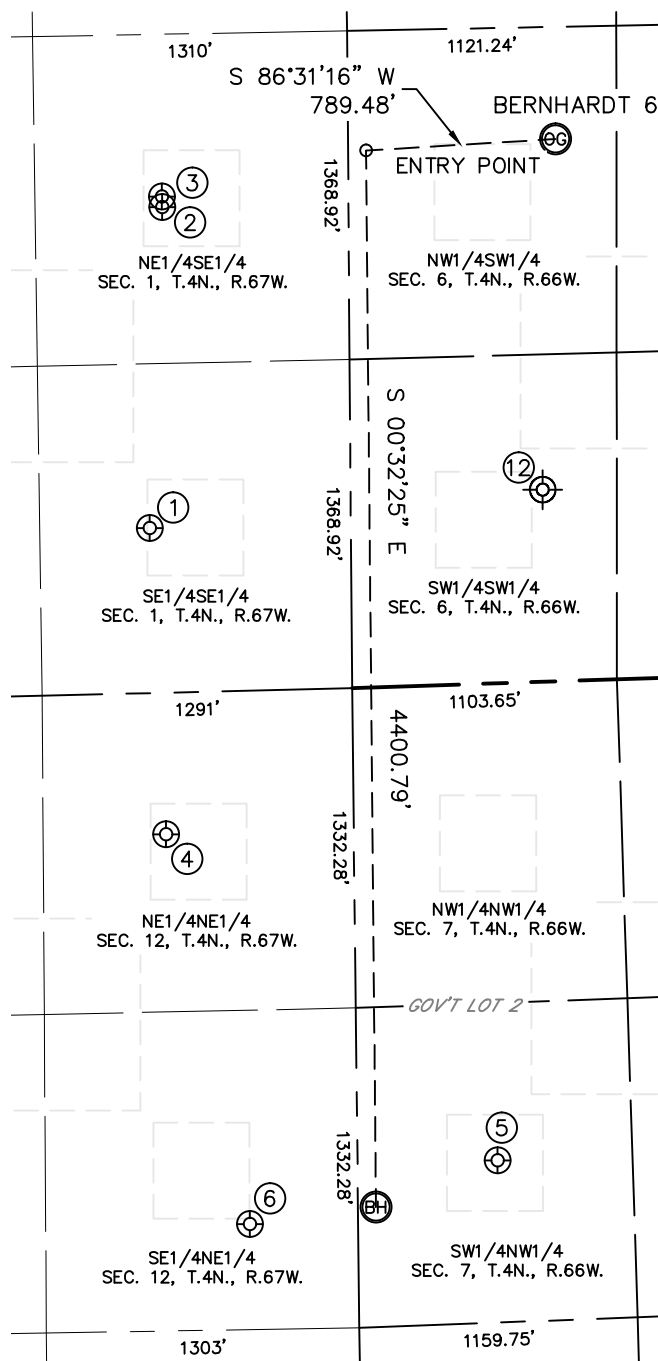


Lat40°, Inc. 1635 Foxtrail Drive, Suite 325 Loveland, CO 970-776-3321

SITE SKETCH

BERNHARDT 6G-403

SECTION: 6
TOWNSHIP: 4N
RANGE: 66W



WELL NO.	WELL NAME	SHL FOOTAGE				SHL LAT°	SHL LONG°	PDOP	ELEV (FT.)	1/4/1/4
1	HANSEN 1-1	686	FSL	838	FEL	40.33567	-104.83279	2.1	4714	SESE
2	HANSEN O 1-23	2022	FSL	775	FEL	40.33933	-104.83256	2.1	4714	NESE
3	HANSEN BC O 01-09	2066	FSL	776	FEL	40.33945	-104.83257	2.0	4714	NESE
4	EHRlich-PMO 12-1	590	FNL	782	FEL	40.33216	-104.83258	2.1	4730	NENE
5	BERNHARDT 7-1	1986	FNL	583	FWL	40.32841	-104.82767	2.1	4731	SWNW
6	HSR-LOT HOLDINGS 8-12	2221	FNL	451	FEL	40.32770	-104.83137	2.2	4736	SENE
12	BERNHARDT #13-6	800	FSL	800	FWL	40.33603	-104.82670	N/A	4713	SWSW

NOTE: THE ABANDONED WELL DATA SHOWN IN RED ABOVE WAS OBTAINED FROM COGCC SCOUT CARDS.

DATE: 8/14/2014
PROJECT#: 2013177