

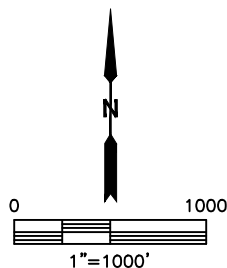
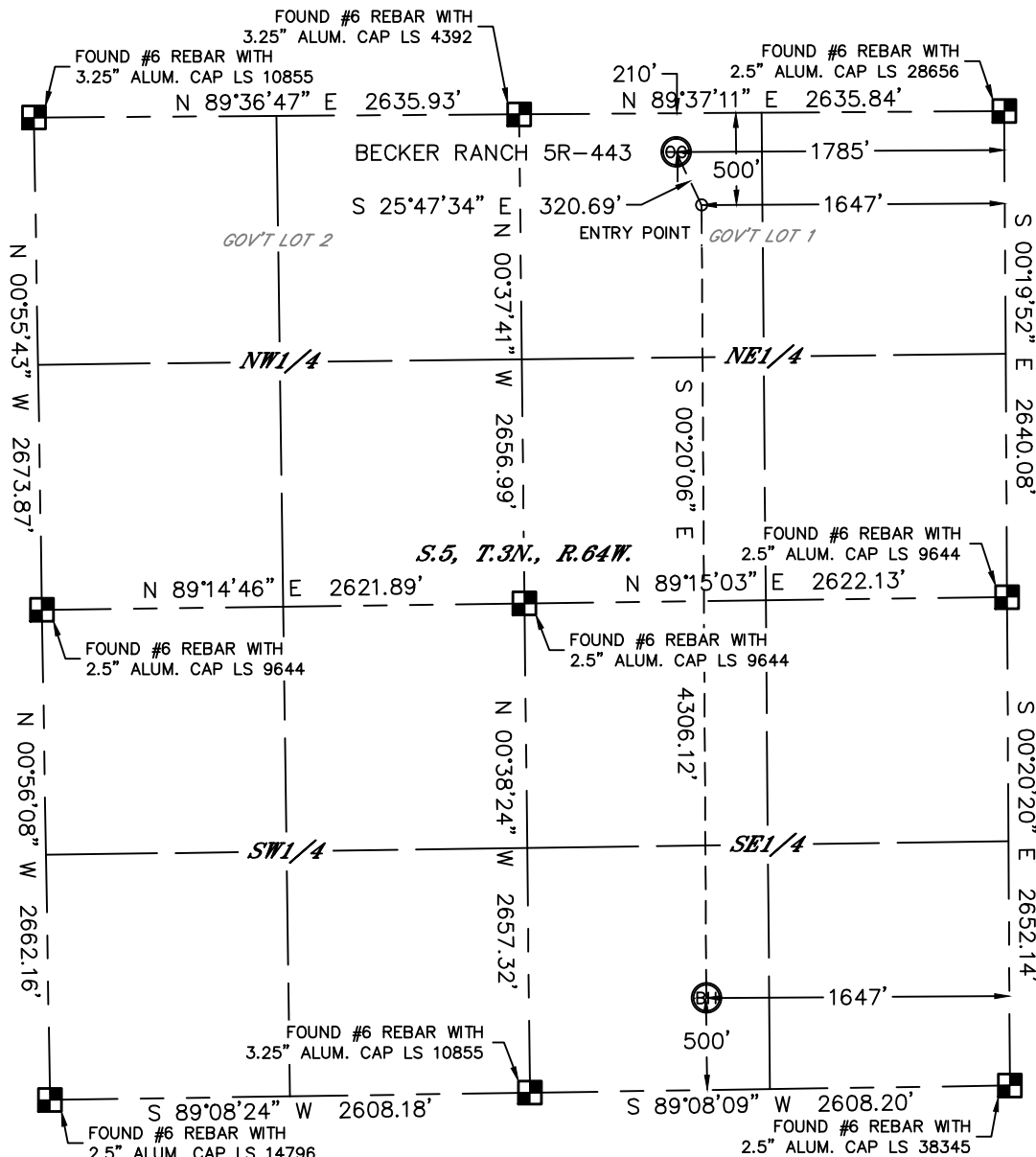


Lat40°, Inc. 1635 Foxtrail Drive, Suite 325 Loveland, CO 970-776-3321

# WELL LOCATION CERTIFICATE

THIS MAP DOES NOT REPRESENT A BOUNDARY SURVEY

SECTION: 5  
TOWNSHIP: 3N  
RANGE: 64W



In accordance with a request from Mac Neumann with PDC ENERGY Lat40°, Inc. has determined the surface location of the BECKER RANCH 5R-443 to be 210' from the NORTH line and 1785' from the EAST line and the bottom hole to be 500' from the SOUTH line and 1647' from the EAST line as measured at right angles from the section lines of Section 5, Township 3 North, Range 64 West of the Sixth Principal Meridian, County of Weld, State of Colorado.

I hereby state that this Well Location Certificate was prepared by me, or under my direct supervision, that the fieldwork was completed on 4/22/2014, for and on behalf of PDC ENERGY. That this is not a Land Survey Plat or an Improvement Survey Plat, and that it is not to be relied upon for establishment of fence, building, or other future improvement lines.

## NOTE:

- 1) Bearings shown are Grid Bearings of the Colorado State Plane Coordinate System, North Zone, North American Datum 1983/2007. The lineal dimensions as contained herein are based upon the "U.S. Survey Foot."
- 2) Ground elevations are based on an observed GPS elevation (NAVD 1988 DATUM).
- 3) IMPROVEMENTS: See LOCATION DRAWING for all visible improvements within 500' of disturbed area.
- 4) SURFACE USE: RANGELAND
- 5) INSTRUMENT OPERATOR: ADAM KELLY
- 6) NEAREST CULTURAL ITEMS:  
BUILDING: 842' N  
BUILDING UNIT: 1729' NW  
HIGH OCCUPANCY BUILDING UNIT: 5280'+  
DESIGNATED OUTSIDE ACTIVITY AREA: 5280'+  
PUBLIC ROAD: 1778' E (CR 53)  
ABOVE GROUND UTILITY: 1013' NE  
RAILROAD: 5280'+  
PROPERTY LINE: 210' N

## SURFACE LOCATION

LAT: 40.26118N  
LONG: 104.57176W  
PDOP: 1.6  
ELEV: 4780'  
1/4,1/4: NWNE

## ENTRY POINT

LAT: 40.26038N  
LONG: 104.57127W

## BOTTOM HOLE

LAT: 40.24857N  
LONG: 104.57134W

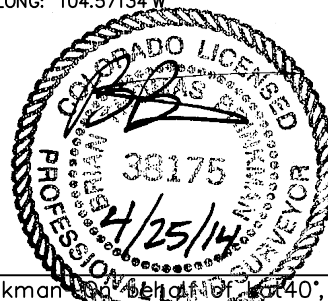
## LEGEND

- = ALIQUOT MONUMENT AS DESCRIBED  
○ = CALCULATED POSITION

Brian T. Brinkman, on behalf of Lat40°, Inc.

Colorado Licensed Professional  
Land Surveyor No. 38175

DATE: 4/25/2014  
PROJECT#: 2013107



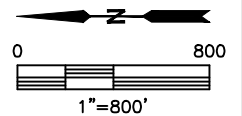
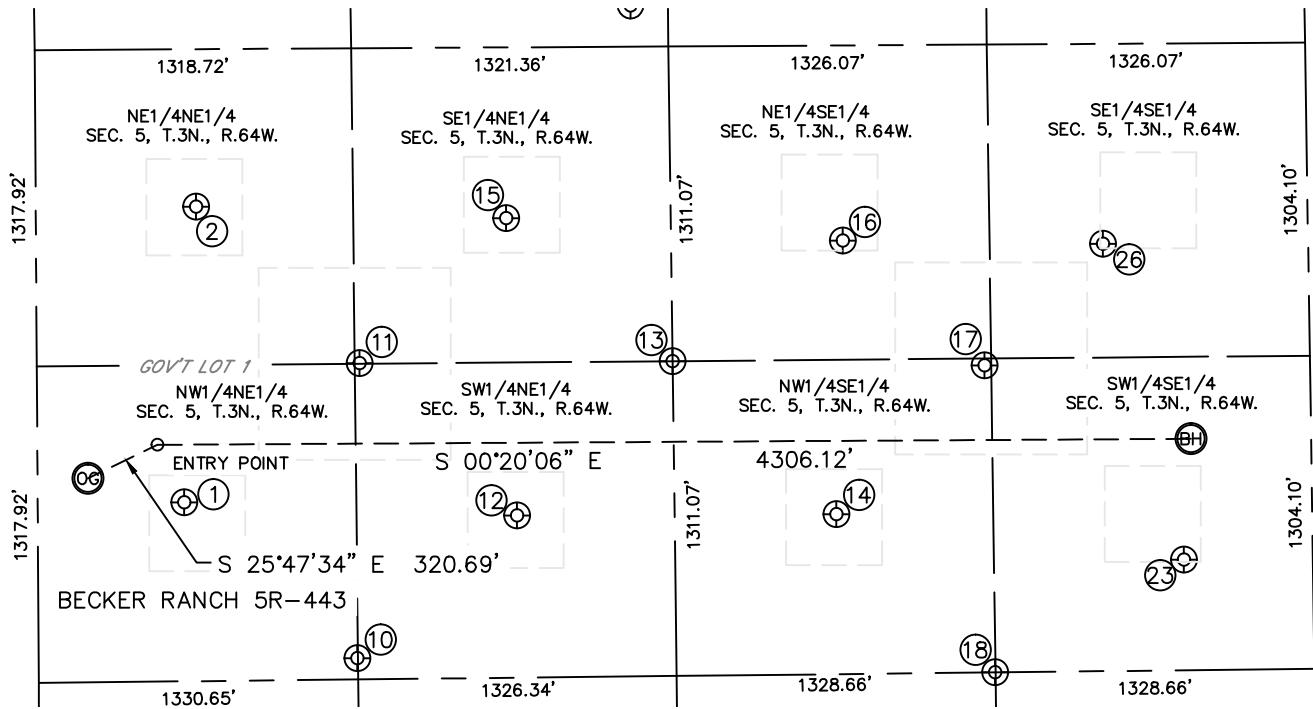


Lat40°, Inc. 1635 Foxtrail Drive, Suite 325 Loveland, CO 970-776-3321

# SITE SKETCH

## BECKER RANCH 5R-443

SECTION: 5  
TOWNSHIP: 3N  
RANGE: 64W



| WELL NO. | WELL NAME     | SHL FOOTAGE |     |      |     | SHL LAT° | SHL LONG°  | PDOP | ELEV (FT.) | 1/4/1/4 |
|----------|---------------|-------------|-----|------|-----|----------|------------|------|------------|---------|
| 1        | BECKER 5-6    | 611         | FNL | 1887 | FEL | 40.26008 | -104.57213 | 2.5  | 4788       | NWNE    |
| 2        | BECKER 5-10   | 668         | FNL | 656  | FEL | 40.25991 | -104.56772 | 2.5  | 4777       | NENE    |
| 10       | BECKER 6-11 I | 1327        | FNL | 2540 | FEL | 40.25812 | -104.57448 | 1.6  | 4788       | NWNE    |
| 11       | BECKER 8      | 1345        | FNL | 1312 | FEL | 40.25806 | -104.57008 | 1.6  | 4781       | SENE    |
| 12       | BECKER 6-12   | 1996        | FNL | 1950 | FEL | 40.25628 | -104.57238 | 1.7  | 4771       | SWNE    |
| 13       | BECKER 12-10I | 2655        | FSL | 1311 | FEL | 40.25448 | -104.57010 | 1.8  | 4751       | NESE    |
| 14       | BECKER 5-1    | 1982        | FSL | 1952 | FEL | 40.25263 | -104.57241 | 1.9  | 4768       | NWSE    |
| 15       | BECKER 5-4    | 1959        | FNL | 712  | FEL | 40.25637 | -104.56794 | 2.0  | 4772       | SENE    |
| 16       | BECKER 5-16   | 1939        | FSL | 813  | FEL | 40.25253 | -104.56833 | 1.9  | 4741       | NESE    |
| 17       | BECKER 6      | 1356        | FSL | 1337 | FEL | 40.25092 | -104.57022 | 1.3  | 4744       | NWSE    |
| 18       | BECKER 15-9I  | 1330        | FSL | 2615 | FEL | 40.25083 | -104.57479 | 1.8  | 4752       | NWSE    |
| 23       | BECKER 5-15   | 537         | FSL | 2151 | FEL | 40.24866 | -104.57314 | 1.6  | 4734       | SWSE    |
| 26       | BECKER 5-5    | 856         | FSL | 833  | FWL | 40.24955 | -104.56842 | 2.1  | 4726       | SESE    |

DATE: 4/25/2014  
PROJECT#: 2013107