

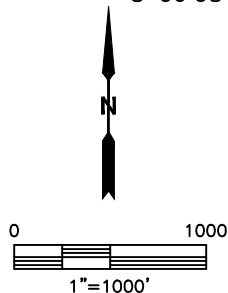
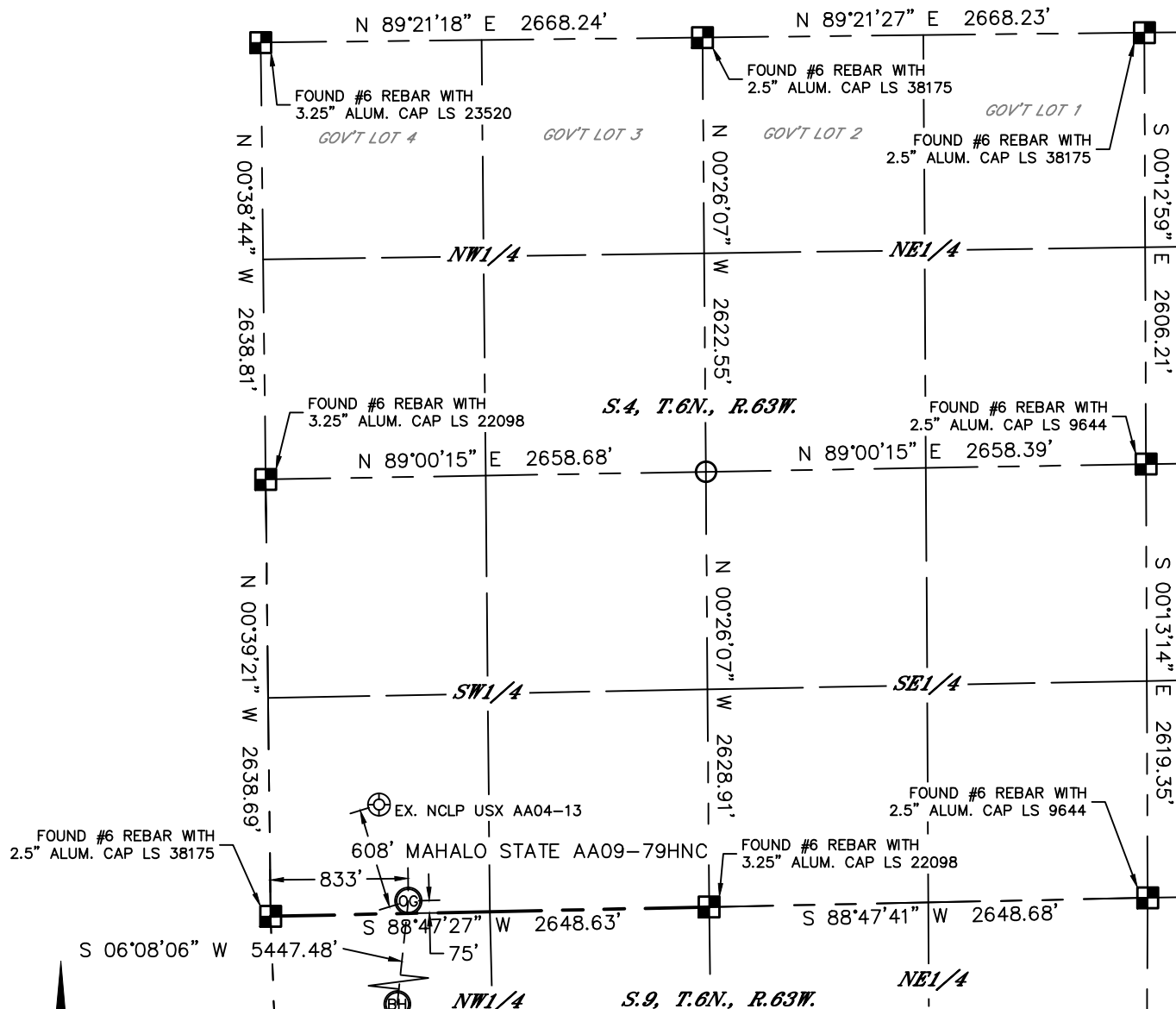


Lat40°, Inc. 1635 Foxtrail Drive, Suite 325 Loveland, CO 970-776-3321

# WELL LOCATION CERTIFICATE

THIS MAP DOES NOT REPRESENT A BOUNDARY SURVEY

SECTION: 4  
TOWNSHIP: 6N  
RANGE: 63W



In accordance with a request from Greg Wilson with Noble Energy Inc. Lat40°, Inc. has determined the surface location of the MAHALO STATE AA09-79HNC to be 75' from the SOUTH line and 833' from the WEST line as measured at right angles from the section lines of Section 4, Township 6 North, Range 63 West and the bottom hole to be 30' from the NORTH line and 60' from the WEST line as measured at right angles from the section lines of Section 16, Township 6 North, Range 63 West of the Sixth Principal Meridian, County of Weld, State of Colorado.

I hereby state that this Well Location Certificate was prepared by me, or under my direct supervision, that the fieldwork was completed on 7/11/2013, for and on behalf of Noble Energy Inc. That this is not a Land Survey Plat or an Improvement Survey Plat, and that it is not to be relied upon for establishment of fence, building, or other future improvement lines.

## NOTE:

- 1) Bearings shown are Grid Bearings of the Colorado State Plane Coordinate System, North Zone, North American Datum 1983/2007. The lineal dimensions as contained herein are based upon the "U.S. Survey Foot."
- 2) Ground elevations are based on an observed GPS elevation (NAVD 1988 DATUM).
- 3) IMPROVEMENTS: See LOCATION DRAWING for all visible improvements within 500' of disturbed area.
- 4) SURFACE USE: CROPLAND
- 5) INSTRUMENT OPERATOR: ADAM KELLY
- 6) NEAREST EXISTING WELL: NCLP USX AA04-13, 608'
- NEAREST CULTURAL ITEMS:
- BUILDING: ±5007' SE
- BUILDING UNIT: ±5007' SE
- HIGH OCCUPANCY BUILDING UNIT: 5280'+
- DESIGNATED OUTSIDE ACTIVITY AREA: 5280'+
- PUBLIC ROAD: (HIGHWAY 392) 2886' SE
- ABOVEGROUND UTILITY: 2827' SE
- RAILROAD: 5280'+
- PROPERTY LINE: 1816' E

## SURFACE LOCATION

LAT: 40.50875N  
LONG: 104.44823W  
PDOP: 1.7  
ELEV: 4699'  
1/4,1/4: SW1/4SW1/4

## BOTTOM HOLE

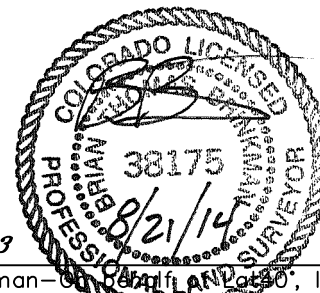
LAT: 40.49390N  
LONG: 104.45055W

## LEGEND

- = ALIQUOT MONUMENT AS DESCRIBED
- = CALCULATED POSITION

## SHEET 1 OF 3

Brian T. Brinkman—Lat40°, Inc.  
Colorado Licensed Professional Land Surveyor  
DATE: 8/21/2014  
PROJECT#: 2013042



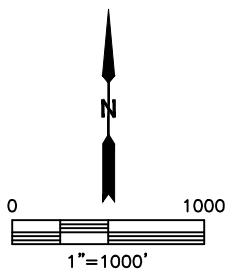
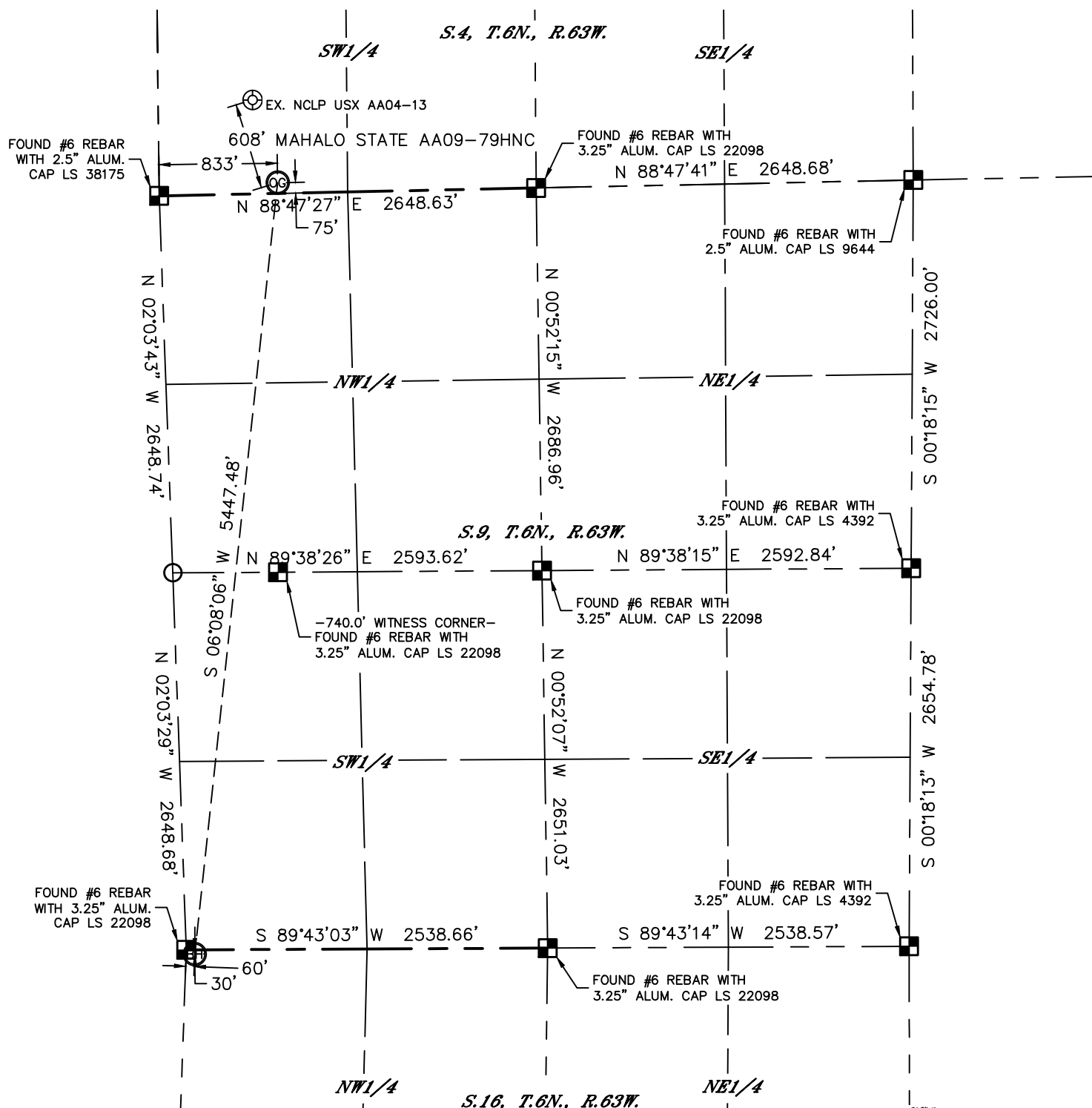


Lat40°, Inc. 1635 Foxtrail Drive, Suite 325 Loveland, CO 970-776-3321

# WELL LOCATION CERTIFICATE

THIS MAP DOES NOT REPRESENT A BOUNDARY SURVEY

SECTION: 4  
TOWNSHIP: 6N  
RANGE: 63W

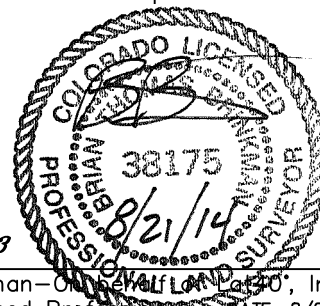


## LEGEND

- = ALIQUOT MONUMENT AS DESCRIBED
- = CALCULATED POSITION

SHEET 2 OF 3

Brian T. Brinkman—On Behalf of Lat40°, Inc.  
Colorado Licensed Professional Land Surveyor No. 38175  
DATE: 8/21/2014  
PROJECT#: 2013042



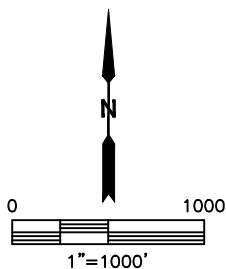
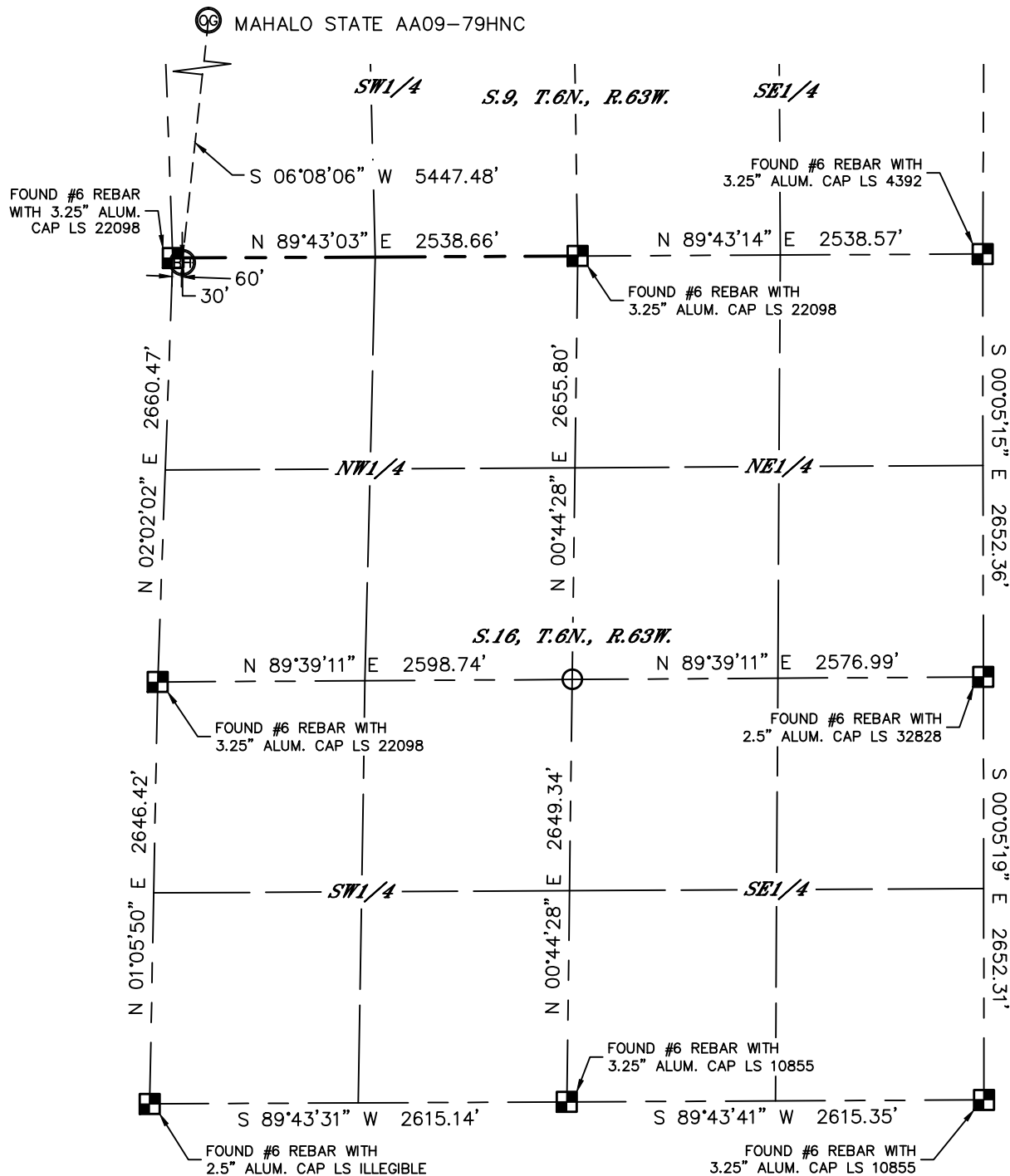


Lat40°, Inc. 1635 Foxtrail Drive, Suite 325 Loveland, CO 970-776-3321

# WELL LOCATION CERTIFICATE

THIS MAP DOES NOT REPRESENT A BOUNDARY SURVEY

SECTION: 4  
TOWNSHIP: 6N  
RANGE: 63W



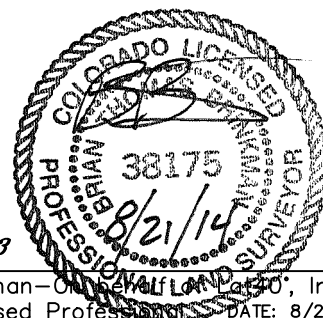
## LEGEND

- = ALIQUOT MONUMENT AS DESCRIBED
- = CALCULATED POSITION

SHEET 3 OF 3

Brian T. Brinkman—On Behalf of Lat40°, Inc.  
Colorado Licensed Professional Land Surveyor No. 38175

DATE: 8/21/2014  
PROJECT#: 2013042



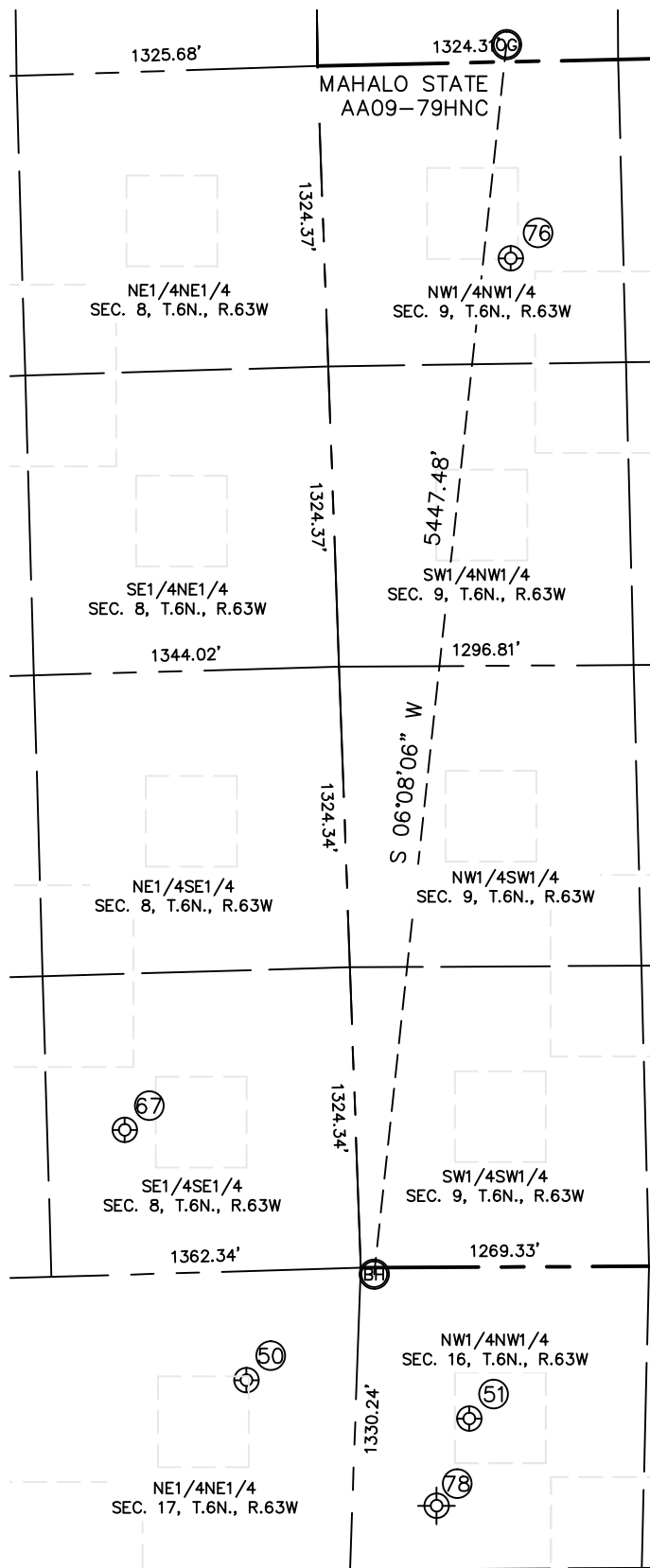


Lat40°, Inc. 1635 Foxtrail Drive, Suite 325 Loveland, CO 970-776-3321

# SITE SKETCH

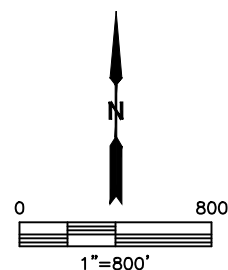
MAHALO STATE AA09-79HNC

SECTION: 4  
TOWNSHIP: 6N  
RANGE: 63W



WELL #	WELL NAME	SHL FOOTAGE			SHL LAT°	SHL LONG°	PDOP	ELEV (FT.)	1/4/1/4
50	BASHOR 17-11	481	FNL	485	FEL	-104.45259	1.5	4691	NENE
51	BASHOR STATE AA 16-4	667	FNL	501	FWL	-104.44908	1.5	4684	NWNW
67	NEW CACHE 8-44	637	FSL	1016	FEL	-104.45447	1.9	4700	SESE
76	GIBSON 11-9	866	FNL	820	FWL	-104.44820	1.6	4704	NWNW
78	GUNNER STATE AA #16-99HZ (P&A)	1050	FNL	370	FWL	-104.45014	NA	4682	NWNW

NOTE: THE ABANDONED WELL DATA SHOWN IN RED ABOVE WAS OBTAINED FROM COGCC SCOUT CARDS.



DATE: 8/21/2014  
PROJECT#: 2013042