



Kerr-McGee Oil & Gas Onshore LP

A subsidiary of Anadarko Petroleum Corporation

1099 18th Street
Denver, CO 80202
720-929-6000

September 11, 2014

Department of Natural Resources
Oil and Gas Conservation Commission
The Chancery Building
1120 Lincoln St., Suite 801
Denver, CO 80203

Re: **30 Day Certification Letter - 318A.e**
STEWARD 13N-6HZ
Township 1 North, Range 65 West, Section 7: SE/4SW/4
Unit Spacing: 01N-65W-Sec 6 SW/4SW/4
01N-65W-Sec 7 W/2W/2
01N-65W-Sec 18 NW/4NW/4
Weld County, Colorado

Ladies/Gentlemen:

Kerr McGee Oil and Gas Onshore LP ("KMG") hereby certifies to the Director that KMG owns one-hundred percent (100%) of the mineral rights in the proposed spacing unit. Therefore, KMG respectfully requests the Director to approve the boundary well.

If you have any questions or issues regarding this permit, please contact Cheryl Light at (720) 929-6461.

Very truly yours,

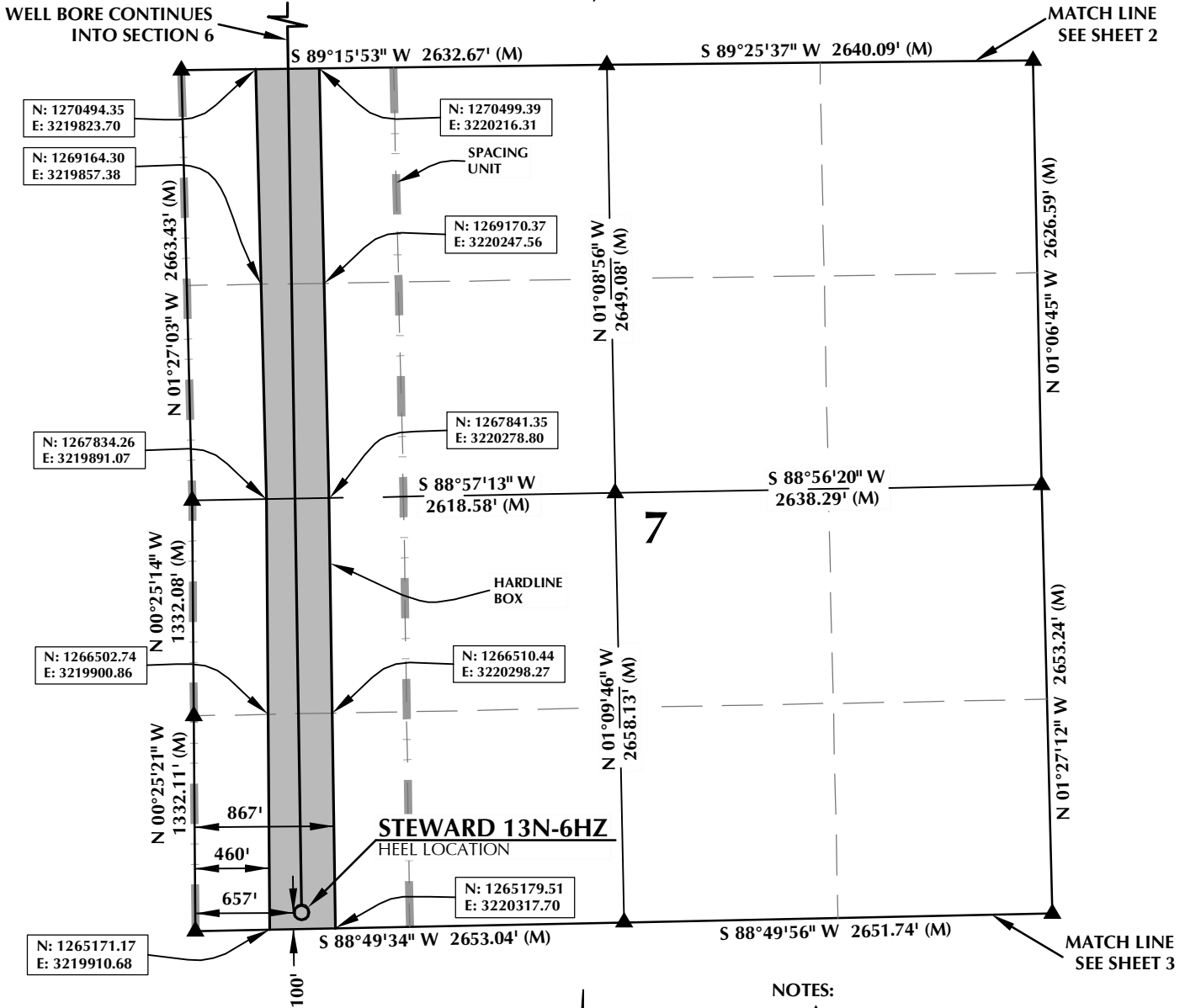
KERR-McGEE OIL AND GAS ONSHORE LP

A handwritten signature in blue ink that reads "Cheryl Light".

Cheryl Light
Senior Regulatory Analyst

Enclosure

SPACING UNIT: STEWARD 13N-6HZ T1N, R65W



HEEL LOCATION
NAD 83
N: 1,265,275.22'
E: 3,220,107.05'

LATITUDE= 40.058891°
LONGITUDE= -104.713645°

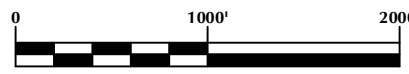
LATITUDE= 40°03'32.00"
LONGITUDE= -104°42'49.122"

AVAILABLE FOOTAGE
7026'

BOTTOM HOLE LOCATION
NAD 83
N: 1,270,906.89'
E: 3,220,019.17'

LATITUDE= 40.074352°
LONGITUDE= -104.713781°

LATITUDE= 40°04'27.668"
LONGITUDE= -104°42'49.610"



SCALE: 1" = 1000'

NOTES:

- ▲ INDICATES FOUND SECTION CORNER
- INDICATES CALCULATED CORNER
- BASIS OF BEARING DERIVED FROM COLORADO COORDINATE SYSTEM 1983 NORTH ZONE UNLESS OTHERWISE NOTED.
- DRAWING NORTHING / EASTING COORDINATES ARE BASED ON COLORADO COORDINATE SYSTEM 1983 NORTH ZONE UNLESS OTHERWISE NOTED.
- COMBINED SCALE FACTOR: .99972680
- THIS EXHIBIT DOES NOT REPRESENT A LAND SURVEY PLAT OR IMPROVEMENT SURVEY PLAT AS DEFINED BY C.R.S. 38-51-102 AND CANNOT BE RELIED UPON TO DETERMINE OWNERSHIP.

WELL PAD - STEWARD 13C-6HZ

STEWARD 13N-6HZ
SPACING UNIT EXHIBIT
100' FSL & 657' FWL SWSW (HEEL)
LOCATED IN SECTION 7
410' FSL & 657' FWL SWSW (BOTTOM)
LOCATED IN SECTION 6
T1N, R65W, 6TH P.M.
WELD COUNTY, COLORADO

**Kerr-McGee Oil &
Gas Onshore L.P.**
1099 18th Street
Denver, Colorado 80202



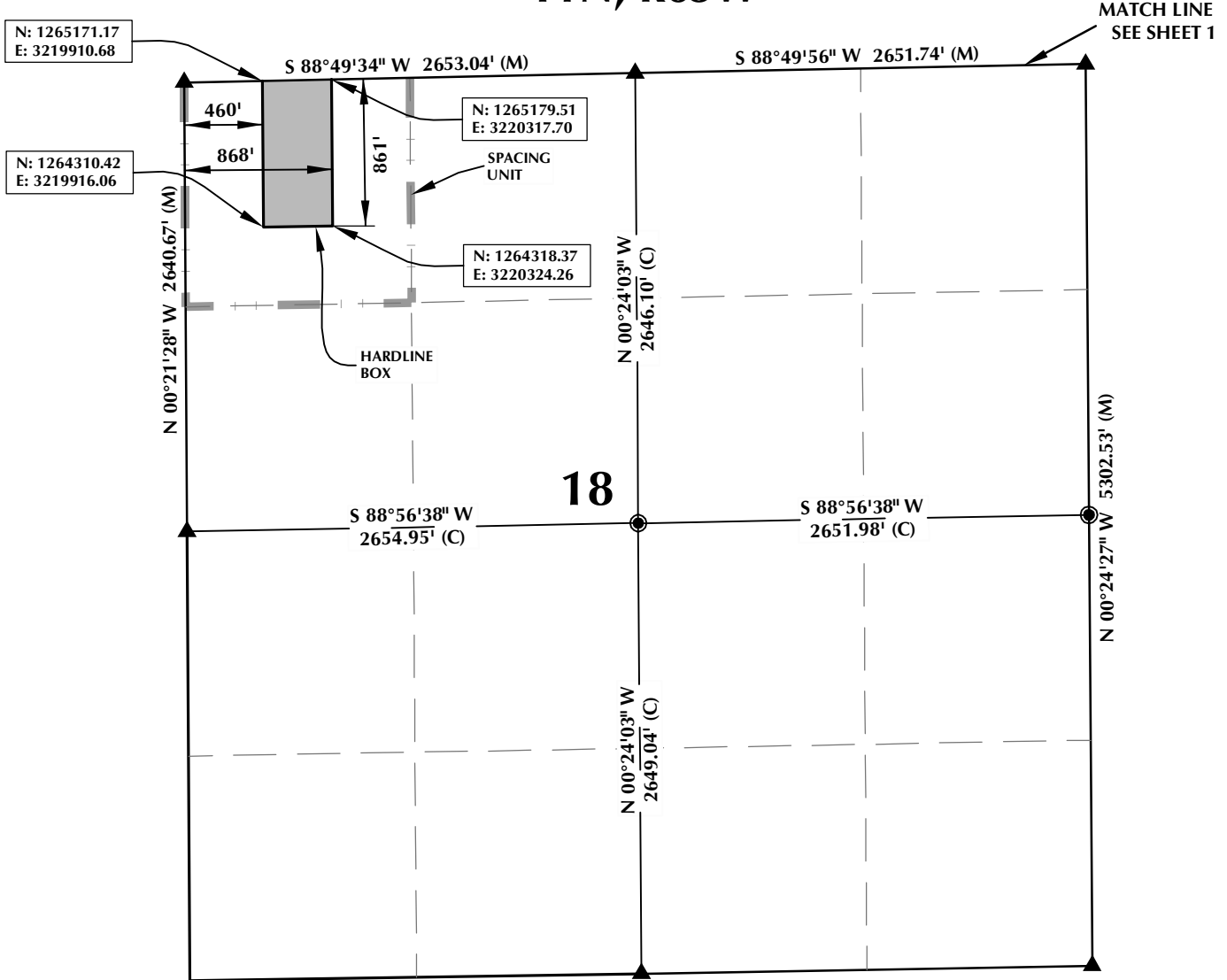
CONSULTING, LLC

SHERIDAN OFFICE
2155 North Main Street
Sheridan, Wyoming 82801
Phone 307-674-0609

LOVELAND OFFICE
1635 Foxtrail Drive, Suite 204
Loveland, Colorado 80538
Phone 970-776-4331

DRAFTED BY: LMO	CHECKED BY: BJR	SHEET NO: 1 1 OF 3
DATE DRAFTED: 3/25/14	DATE SURVEYED: 6/19/12	
REVISED: 8/29/14	FILE NAME: 12-59	

SPACING UNIT: STEWARD 13N-6HZ T1N, R65W



HEEL LOCATION
NAD 83
N: 1,265,275.22'
E: 3,220,107.05'

LATITUDE= 40.058891°
LONGITUDE= -104.713645°

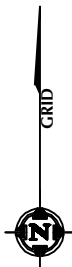
LATITUDE= 40°03'32.00"
LONGITUDE= -104°42'49.122"

AVAILABLE FOOTAGE
7026'

BOTTOM HOLE LOCATION
NAD 83
N: 1,270,906.89'
E: 3,220,019.17'

LATITUDE= 40.074352°
LONGITUDE= -104.713781°

LATITUDE= 40°04'27.668"
LONGITUDE= -104°42'49.610"



SCALE: 1" = 1000'

NOTES:

- ▲ INDICATES FOUND SECTION CORNER
- INDICATES CALCULATED CORNER
- BASIS OF BEARING DERIVED FROM COLORADO COORDINATE SYSTEM 1983 NORTH ZONE UNLESS OTHERWISE NOTED.
- DRAWING NORTHING / EASTING COORDINATES ARE BASED ON COLORADO COORDINATE SYSTEM 1983 NORTH ZONE UNLESS OTHERWISE NOTED.
- COMBINED SCALE FACTOR: .99972680
- THIS EXHIBIT DOES NOT REPRESENT A LAND SURVEY PLAT OR IMPROVEMENT SURVEY PLAT AS DEFINED BY C.R.S. 38-51-102 AND CANNOT BE RELIED UPON TO DETERMINE OWNERSHIP.

WELL PAD - STEWARD 13C-6HZ

STEWARD 13N-6HZ
SPACING UNIT EXHIBIT
100' FSL & 657' FWL SWSW (HEEL)
LOCATED IN SECTION 7
410' FSL & 657' FWL SWSW (BOTTOM)
LOCATED IN SECTION 6
T1N, R65W, 6TH P.M.
WELD COUNTY, COLORADO

**Kerr-McGee Oil &
Gas Onshore L.P.**
1099 18th Street
Denver, Colorado 80202



CONSULTING, LLC

SHERIDAN OFFICE
2155 North Main Street
Sheridan, Wyoming 82801
Phone 307-674-0609

LOVELAND OFFICE
1635 Foxtrail Drive, Suite 204
Loveland, Colorado 80538
Phone 970-776-4331

DRAFTED BY:	LMO	CHECKED BY:	BJR	SHEET NO: 3 3 OF 3
DATE DRAFTED:	3/25/14	DATE SURVEYED:	6/19/12	
REVISED:	8/29/14	FILE NAME:	12-59	