



August 6, 2014

Mr. Matt Lepore, Director  
Colorado Oil and Gas Conservation Commission  
1120 Lincoln Street  
Suite 801  
Denver, Colorado 80203

**RE: COGCC Rule 318A.e.: Proposed Wellbore Spacing Unit  
Burroughs North #6 Well  
NENE Section 14, Township 7 North, Range 65 West  
Weld County, Colorado**

Dear Mr. Lepore:

Extraction Oil & Gas is planning to drill the above referenced well in accordance with the provisions set out in COGCC Rule 318A.e. Extraction's proposed wellbore spacing unit consists of:

Burroughs North #6  
N/2 Sec. 14-T7N-R65W; N/2 Sec. 15-T7N-R65W  
Containing 640 acres more or less.

Extraction is not the only owner within the proposed wellbore spacing unit and has provided notice to the remaining owner(s) within this spacing unit, as required by COGCC Rule 318A.e.(6). Copies of the required notification letters are on file at Extraction's office. The required thirty (30) day notice period has elapsed absent the receipt by Extraction of any objection to their proposal by the owner(s) within the proposed spacing unit for the subject well.

Enclosed is the Proposed Spacing Unit Plat to assist in your review and approval of Extraction's proposed Application for Permit to Drill (APD) for the Burroughs North #6 well. Extraction respectfully requests the COGCC review the enclosed information and approve the requested exception location waiver and APD for the Burroughs North #6 Well.

Respectfully,

Nick Curran  
Regulatory Tech  
Agent for Extraction Oil & Gas

Attachment: Proposed Spacing Unit Plat

T7N, R65W, 6th P.M.

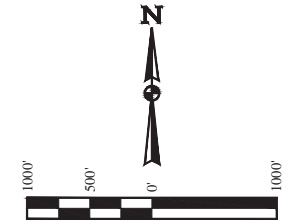
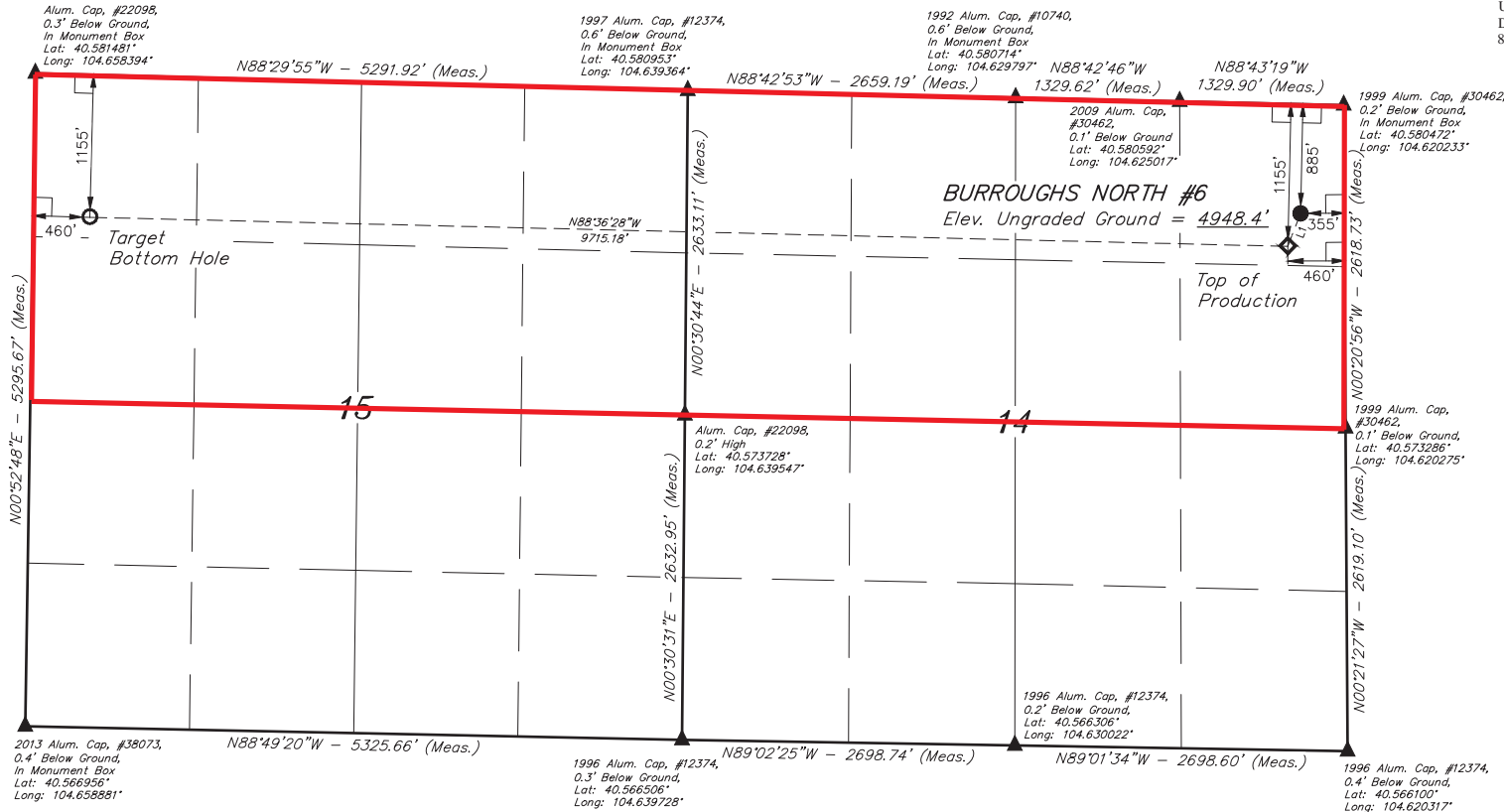
Proposed Spacing Unit: N/2 Sec 14-T7N-R65W & N/2 Sec 15-T7N-R65W  
640 Acres

EXTRACTION OIL & GAS

BURROUGHS NORTH #6  
NE 1/4 NE 1/4, SECTION 14, T7N, R65W, 6th P.M.  
WELD COUNTY, COLORADO

BASIS OF BEARINGS  
BASIS OF ELEVATION

USGS COOPERATIVE BASE NETWORK CONTROL STATION,  
DESIGNATION 'VERMILYEA'. NGS DATA SHEET LISTS THE NAVD  
88 ELEVATION AS BEING 5026 FEET.



LINE TABLE		
LINE	DIRECTION	LENGTH
L1	S21°08'16"W	287.18'

LEGEND:

- 90° SYMBOL
- PROPOSED WELLHEAD.
- TARGET BOTTOM HOLE.
- SECTION CORNERS LOCATED.
- TOP OF PRODUCTION.

PDOP = 1.8

NAD 83 (TARGET BOTTOM HOLE)	NAD 83 (TOP OF PRODUCTION)	NAD 83 (SURFACE LOCATION)
LATITUDE = 40°34'41.76" (40.578267)	LATITUDE = 40°34'38.44" (40.577344)	LATITUDE = 40°34'41.07" (40.578075)
LONGITUDE = 104°39'24.65" (104.656847)	LONGITUDE = 104°37'18.86" (104.621906)	LONGITUDE = 104°37'17.48" (104.621522)
NAD 27 (TARGET BOTTOM HOLE)	NAD 27 (TOP OF PRODUCTION)	NAD 27 (SURFACE LOCATION)
LATITUDE = 40°34'41.83" (40.578286)	LATITUDE = 40°34'38.51" (40.577364)	LATITUDE = 40°34'41.14" (40.578094)
LONGITUDE = 104°39'22.78" (104.656328)	LONGITUDE = 104°37'17.00" (104.621389)	LONGITUDE = 104°37'15.62" (104.621006)



UELS, LLC  
Corporate Office \* 85 South 200 East  
Vernal, UT 84078 \* (435) 789-1017

SURVEYED BY: DALLAS NIELSEN, L.P.	DATE: 06-04-14
DRAWN BY: K.B.	DATE DRAWN: 06-30-14
SCALE: 1" = 1000'	REVISED: 00-00-00

WELL LOCATION PLAT